



## **NIRB Uuktuutinga Ihivriughikhamut #125420**

### **Arviat Fuel Capacity Increase**

**Uuktuutinga Qanurittuq:** New

**Havaap Qanurittunia:** Ukhukyuattigut

**Uuktuutinga Ublua:** 11/9/2018 9:13:20 AM

**Period of operation:** from 0001-01-01 to 0001-01-01

**Piumayaat Angirutinga:** from 0001-01-01 to 0001-01-01

**Havauhikhaq Ikayuqtinga:** Lisa Mitchell  
Government of Nunavut  
P.O. Box 1000 Stn 620  
Iqaluit NU X0A0H0  
Canada  
Hivayautit Nampanga:: 867-975-6448, Kayumiktukkut Nampanga::



## Hulilukaarutit

Inigiya	Hulilukaarut Qanurittuq	Nunannga Qanurittaakhaanik	Initurlinga qanuritpa	Initurlinga utuqqarnitat unaluuniit Ingilraaqnitat Uyarannuqtut akhuurninnga	Qanitqiyauyuq qanitqiamut nunallaat kitulluuniit ahiruqtaliyainnit nuna
New Tank Farm	Fuel and chemical storage	Commissioners	N/A	N/A	Within the Hamlet of Arviat boundary
Existing Tank Farm	Site Cleanup/Remediation	Municipal	Existing tank farm site.	N/A	Within the Hamlet of Arviat boundary

### Nunaliin Ilauyun, Aviktuqhimayuniitunullu Ikayuuhiarunguyun

Nunauyuq	Atia	Timiuyuq	Upluani Uqaqatigiyaungmata
Arviat	Steve England	Hamlet of Arviat	2018-09-17
Arviat	Roxi Illnik	Hamlet of Arviat	2018-09-17

# Angiuttauvaktunik

Naunaiqlugu nunanga talvani havauhikhaq ittuq:

Kivalliq

## Angiuttauvaktunik

Munariniqmut Ayuittiaqtuq	Angirutinga Qanurittuq	Tadja Qanurittaakhaanik	Ublua Tuniyauyuq/Uuktuqtuq	Umikvikhaa Ublua
Nunavut Imaligiyyit Katimayit	Not yet applied.	Not Yet Applied		
Environment and Climate Change Canada	Not yet applied.	Not Yet Applied		
Tingmiliqiyiitkut Kaanatami	Not yet applied.	Not Yet Applied		
Nunavut Kavamanga, Avatiliriyikkut	Not yet applied.	Not Yet Applied		
Indigenous and Northern Affairs Canada	Not yet applied.	Not Yet Applied		
Iqalukhiurniqmut Tariuqmilu Kaanata	Not yet applied.	Not Yet Applied		

## Project transportation types

Transportation Type	Qanuq Atuqtauniarmangaa	Length of Use
Water	Sealft materials for new tank farm and construction equipment.	
Land	Heavy equipment vehicles required for construction.	

## Project accomodation types

Nunauyuq

# Ihuaqutivaluin Atuqtauyukhan

Hanalrutit atuqtaunahuat (ukuallu ikuutat, pampiutainnik, tingmitinik, akhaluutinik, hunaluuniit)

Hanalrutit Qanurittuq	Qaffiuyut	Aktikkulaanga – Qanurittullu	Qanuq Atuqtauniarmangaa
30-ton boom truck			transporting material
Cat 320 excavator			
Girth Scaffolds	2		
Cat 950 loader			
L9000 dump truck	1		
Pick up trucks	2		
JLG 80 foot articulated boom			
500A welding machines	3		
300A welding machine	1		
multi-welders complete with welding leads and welding consumables	4		
dewatering pump	1		
4 inch water transfer pump	1		
hydrostatic pump	1		
375 CFM compressor	1		
Cat 267 skid steer	1		
pig launcher	1		clean the pipeline
2 inch fuel transfer pump	1		
3/4 inch fuel transfer pump	1		
hose fittings and fasteners			for temporary fuel hookup

## Qanurittuq Urhuqyuaq unalu Qayangnaqtut Hunavaluit Aturninnga

Qanurittuq urhuqyuaq hunavaluit aturninnga:	Urhuqyuaq Qanurittuq	Qaffiuyut qattaryut	Qattaryuk Aktikkulaanga	Atauttimut Qaffiuyut	Ilanga	Qanuq Atuqtauniarmangaa
Diesel	fuel	3	3333000	9999000	Liters	Will meet and exceed foretasted fuel storage requirements in 20 years.
Gasoline	fuel	1	3333000	3333000	Liters	Will meet and exceed foretasted fuel storage requirements in 20 years.

## Imaqmik Aturninnga

Ubluq qanuraaluk (m3)	Aturumayain imavaluin utiqittagaani qanuq	Atulirumayain imavaluin utiqittagani humi
0		

# Iqqakuq

Ikkakunik Munakgiyauyunik

Havauhikhaq Hulilukaarut	Qanurittuq Iqqakut	Ihumagiyauyuq Qanuraaluktut Atuqtait	Qanuq Iqqakuurniarmangaa	Halummaqtirarnirutikhan piyutin
Information is not available				

**Avatiliriniqmut Ayurhautingit:**

The marshes in this area would need to be filled in to build the tank farm.

# **Additional Information**

**SECTION A1: Project Info**

**SECTION A2: Allweather Road**

**SECTION A3: Winter Road**

**SECTION B1: Project Info**

**SECTION B2: Exploration Activity**

**SECTION B3: Geosciences**

**SECTION B4: Drilling**

**SECTION B5: Stripping**

**SECTION B6: Underground Activity**

**SECTION B7: Waste Rock**

**SECTION B8: Stockpiles**

**SECTION B9: Mine Development**

**SECTION B10: Geology**

**SECTION B11: Mine**

**SECTION B12: Mill**

**SECTION C1: Pits**

**SECTION D1: Facility**

**SECTION D2: Facility Construction**

**SECTION D3: Facility Operation**

**SECTION D4: Vessel Use**

**SECTION E1: Offshore Survey**

**SECTION E2: Nearshore Survey**

**SECTION E3: Vessel Use**

## **SECTION F1: Site Cleanup**

## **SECTION G1: Well Authorization**

## **SECTION G2: Onland Exploration**

## **SECTION G3: Offshore Exploration**

## **SECTION G4: Rig**

## **SECTION H1: Vessel Use**

## **SECTION H2: Disposal At Sea**

## **SECTION I1: Municipal Development**

## **Qanurittuq Ittunik Avatinga: Avatingalluanga**

## **Qanurittuq Ittunik Avatinga: Inuuhimayunut Avatinga**

## **Qanurittuq Ittunik Avatinga: Inungit-maniliurutingit Avatinga**

## **Miscellaneous Project Information**

The existing lines will be decommissioned as follows: 1. The line will be excavated; 2. It will be drained, purged, cleaned, cut, bundled and stacked at a location specified by the Owner; 3. Pipe will be cut to be maximum 6 m length or as directed by the Engineer; 4. Valves, flexible connectors and usable equipment will be removed from the piping and turned over to Regional Petroleum Products Officer for future use or disposal; 5. The anodes and other cathodic protection will be removed; and 6. The excavated route will be reinstated to its original condition

## **Naunaiyainiq ukuninnga Ayurhautingit unalu Piumayaat Ikikliyuumiutinahuarutit**

## **Tamatkiumayunik Ihuikgutivaktunik**



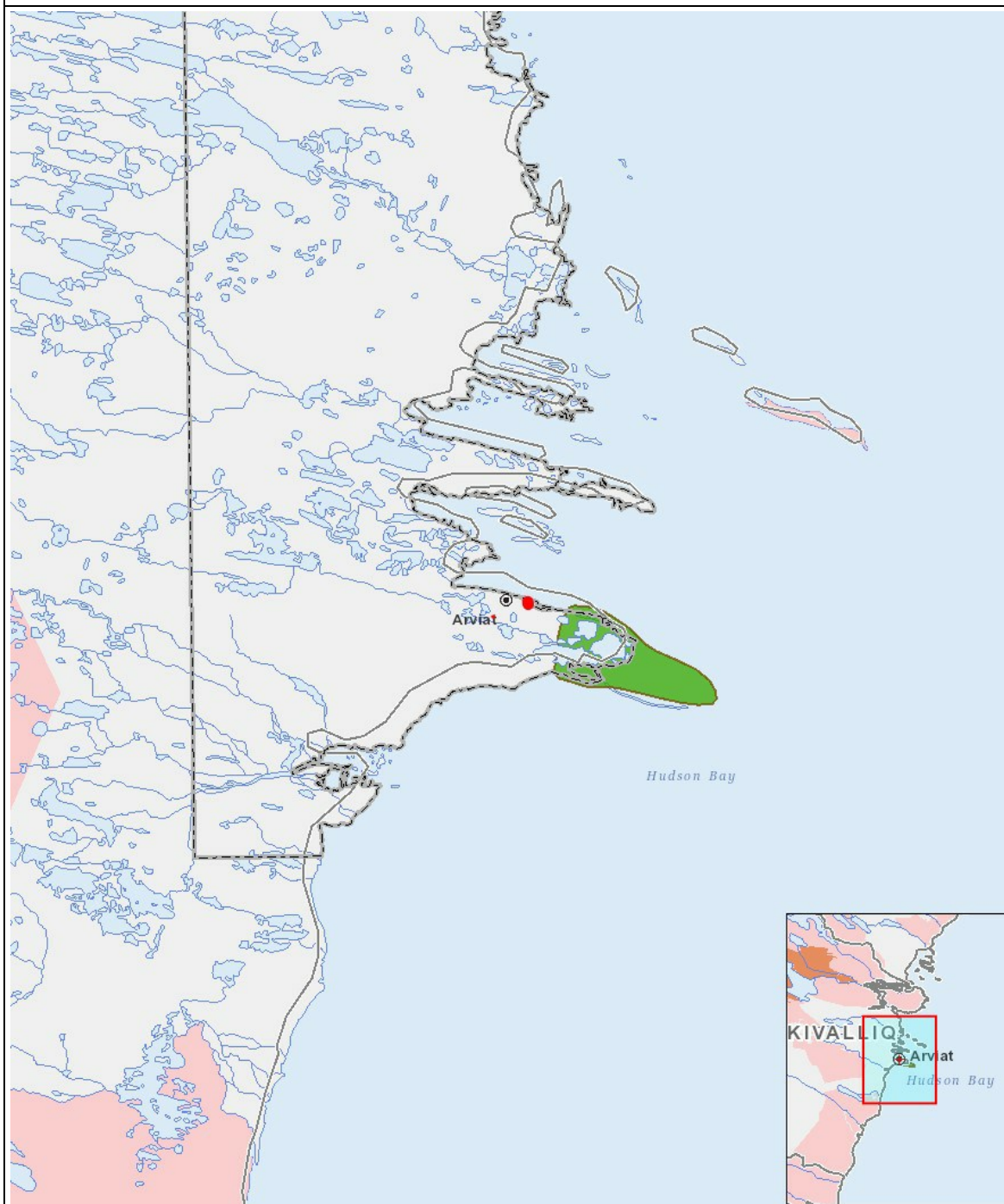
## Impacts

### Ilitariyauniq Avatiliriniqmut Ayurhautingit

		PHYSICAL	Designated environmental areas	Ground stability	Permafrost	Hydrology / Limnology	Water quality	Climate conditions	Eskers and other unique or fragile landscapes	Surface and bedrock geology	Sediment and soil quality	Tidal processes and bathymetry	Air quality	Noise levels	BIOLOGICAL	Vegetation	Wildlife, including habitat and migration patterns	Birds, including habitat and migration patterns	Aquatic species, incl. habitat and migration/spawning	Wildlife protected areas	SOCIO - ECONOMIC	Archaeological and cultural historic sites	Employment	Community wellness	Community infrastructure	Human health
<b>Havakvinga</b>																										
Fuel and chemical storage			U	N	N	-	N	U	U	U	U	N	N	P		N	N	N	N	U		P	-	-	-	-
<b>Aulapkaininnga</b>																										
Fuel and chemical storage			U	N	N	-	N	N	N	U	U	P	N	P		U	U	U	U	U		U	-	-	-	-
<b>Piiqtauniq</b>																										
-			-	-	-	-	-	-	-	-	-	-	-	-		-	-	-	-	-		-	-	-	-	-

(P = Nakuuyuq, N = Nakuungittut unalu mikhilimaittuq, M = Nakuungittut unalu mikhittaaqtuq, U = Naluyauyuq)

# Havaariyauyukhamut Nayugaa



## List of Project Geometries

1	polyline	New Tank Farm
2	polyline	New Tank Farm
3	polyline	Existing Tank Farm
4	polyline	Existing Tank Farm
5	point	New Tank Farm Location