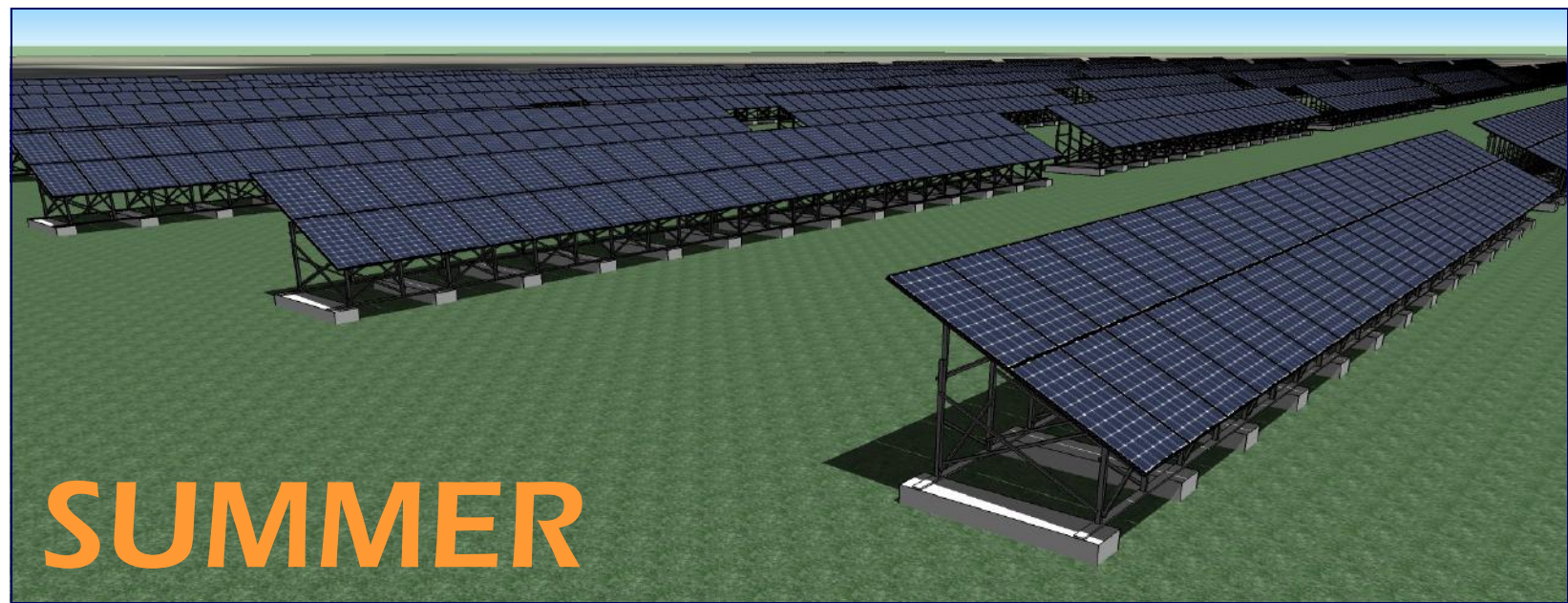
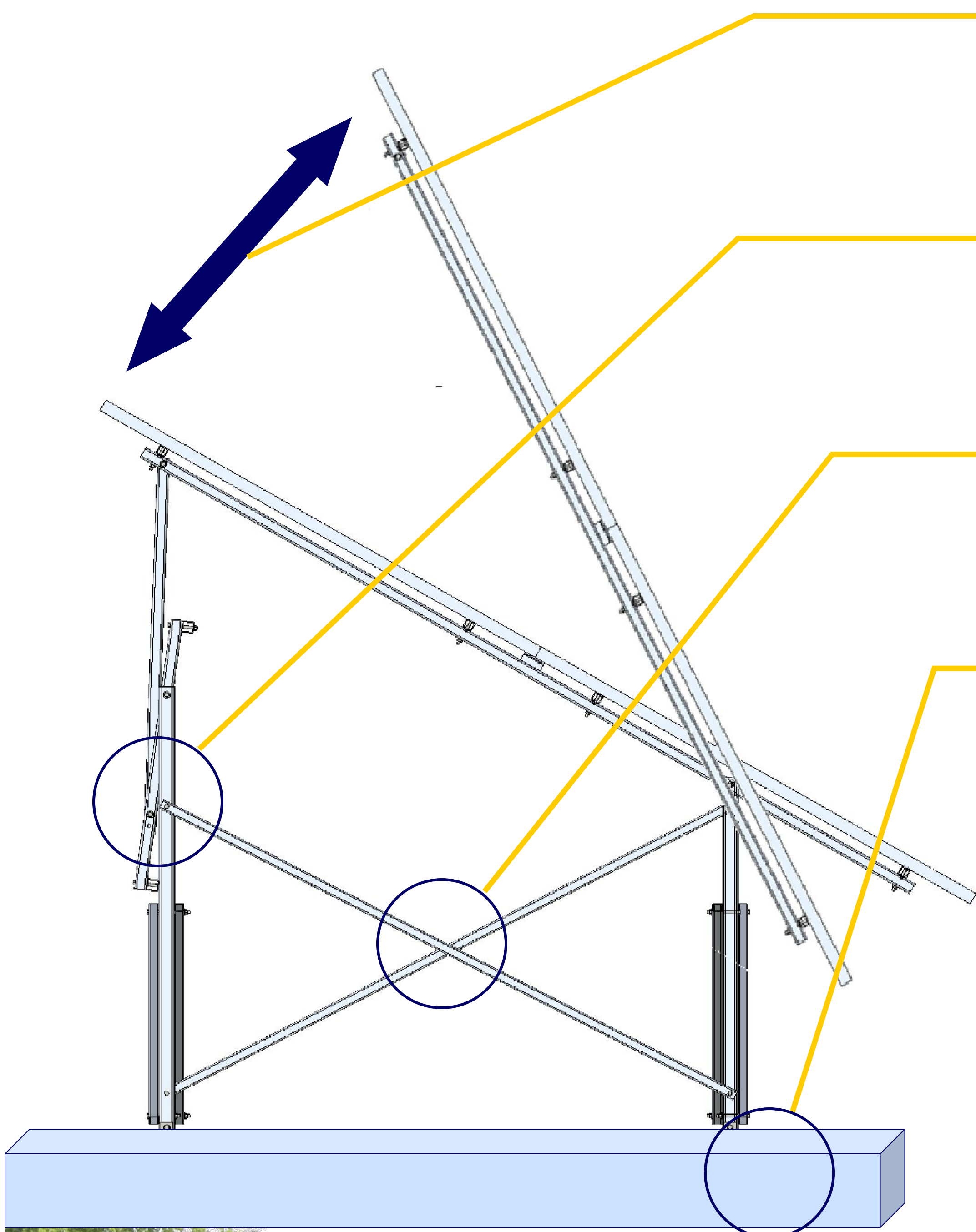


QuickTrack™

DUAL POSITION GROUND MOUNT



+12%
More Power Annually



Designed for Ontario: Dual Position, seasonally adjustable to shed snow and maximize reflection.



Proven Reliability: No Motors, No Controllers, No Sensors, and No Actuators = No Downtime.



Made in Ontario: Stainless steel and all structural aluminum construction made to match any module.

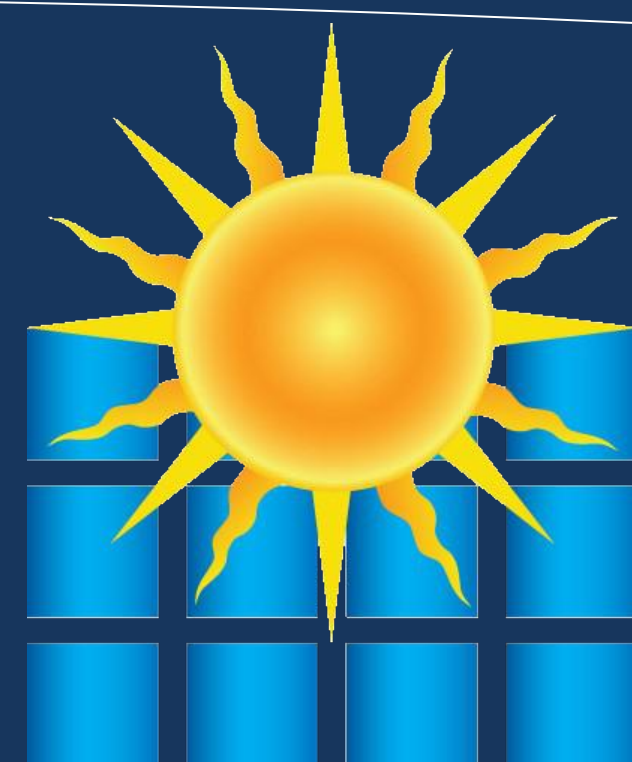


Ballasted Foundation: Meets all site location needs designed for 120 km/h winds.



The QuickTrack design is patented in Canada and USA. iSolara Solar Power was established in 2003; and has designed and installed systems generating over 15 GWh of renewable energy.

www.iSolara.com | 613-738-2646



iSolara
Solar Power