



## **NIRB Uuktuutinga Ihivriughikhamut #125478**

### **Microplastics in beach sediment: Collecting baseline data for microplastic contamination around Iqaluit, Nunavut, and developing tools for effective community-based monitoring**

**Uuktuutinga Qanurittuq:** New

**Havaap Qanurittunia:** Scientific Research

**Uuktuutinga Ublua:** 8/9/2019 12:24:30 PM

**Period of operation:** from 0001-01-01 to 0001-01-01

**Piumayaat Angirutinga:** from 0001-01-01 to 0001-01-01

**Havauhikhaq Ikayuqtinga:** Madelaine Bourdages  
Carleton University  
1125 Colonel By Drive  
Ottawa Ontario K1S 5B6  
Canada  
Hivayautit Nampanga:: 6048451507, Kayumiktukkut Nampanga::

# **QANURITTUT**

**Tukihiannaqtunik havaariyaumayumik uqauhiuyun**

Qablunaatitut: Please see attached document.

Uiviititut: Please see attached document.

Inuktitut: Please see attached document.

## **Personnel**

Personnel on site: 2

Days on site: 5

Total Person days: 10

Operations Phase: from 2019-09-23 to 2019-09-27

## Hulilukaarutit

Inigiya	Hulilukaarut Qanurittuq	Nunannga Qanurittaakhaanik	Initurlinga qanuritpa	Initurlinga utuqqarnitat unaluuniit Ingilraaqnitat Uyarannguqtut akhuurninnga	Qanitqiyauyuq qanitqiamut nunallaat kitulluuniit ahiruqtaliyainnit nuna
Site 1	Sampling sites	Municipal	NA	NA	Within Iqaluit
Site 2	Sampling sites	Municipal	NA	NA	Within Iqaluit
Site 3	Sampling sites	Municipal	NA	NA	Within Iqaluit
Site 4	Sampling sites	Municipal	NA	NA	Within Iqaluit
Site 5	Sampling sites	Municipal	NA	NA	Within Iqaluit

## Nunaliin Ilauyun, Aviktuqhimayuniitunullu Ikayuuhiarunguyun

Nunauyuq	Atia	Timiuyuq	Upluani Uqaqatigiyaungmata
Iqaluit	Jamal Shirley	Nunavut Research Institute	2018-11-01
Iqaluit	Dan Martin	Nunavut Arctic College	2018-11-01
Iqaluit	Jason Carpenter	Nunavut Arctic College	2018-11-01

# Angiuttauvaktunik

Naunaiqlugu nunanga talvani havauhikhaq ittuq:

South Baffin

## Angiuttauvaktunik

Munariniqmut Ayuittiaqtuq	Angirutinga Qanurittuq	Tadja Qanurittaakhaanik	Ublua Tuniyauyuq/Uuktuqtuq	Umikvikhaa Ublua
Nunavunmi Ihivriuqniqmut Timiqutigiyanga	Submitted application to NRI on July 15, 2019.	Applied, Decision Pending		

## Project transportation types

Transportation Type	Qanuq Atuqtauniarmangaa	Length of Use
Land	Access to the sampling sites will be by foot.	

## Project accomodation types

Nunauyuq

Alaanut,

# Ihuaqutivaluin Atuqtauyukhan

Hanalrutit atuqtaunahuat (ukuallu ikuutat, pampiutainnik, tingmitinik, akhaluutinik, hunaluuniit)

Hanalrutit Qanurittuq	Qaffiuyut	Aktikkulaanga – Qanurittullu	Qanuq Atuqtauniarmangaa
Information is not available			

## Qanurittuq Urhuqyuaq unalu Qayangnaqtut Hunavaluit Aturninnga

Qanurittuq urhuqyuaq hunavaluit aturninnga:	Urhuqyuaq Qanurittuq	Qaffiuyut qattaryut	Qattaryuk Aktikkulaanga	Atauttimut Qaffiuyut	Ilanga	Qanuq Atuqtauniarmangaa
Information is not available						

## Imaqmik Aturninnga

Ubluq qanuraaluk (m3)	Aturumayain imavaluin utiqtittagaani qanuq	Atulirumayain imavaluin utiqtittagani humi
0		

# Iqqakuq

## Ikkakunik Munakgiyauyunik

Havauhikhaq Hulilukaarut	Qanurittuq Iqqakut	Ihumagiyauyuq Qanuraaluktut Atuqtait	Qanuq Iqqakuurniarmangaa	Halummaqtirarnirutikhan piyutin
Information is not available				

### Avatiliriniqmut Ayurhautingit:

We do not foresee any impacts on the environment, wildlife or people as a result of this study or the sample collection. We will not collect any sediment that is being used by wildlife, and if at any time there is a threat to disturbing wildlife, all sampling will stop. No equipment or waste will be left on site, and access to the sampling locations will be by foot.

# **Additional Information**

**SECTION A1: Project Info**

**SECTION A2: Allweather Road**

**SECTION A3: Winter Road**

**SECTION B1: Project Info**

**SECTION B2: Exploration Activity**

**SECTION B3: Geosciences**

**SECTION B4: Drilling**

**SECTION B5: Stripping**

**SECTION B6: Underground Activity**

**SECTION B7: Waste Rock**

**SECTION B8: Stockpiles**

**SECTION B9: Mine Development**

**SECTION B10: Geology**

**SECTION B11: Mine**

**SECTION B12: Mill**

**SECTION C1: Pits**

**SECTION D1: Facility**

**SECTION D2: Facility Construction**

**SECTION D3: Facility Operation**

**SECTION D4: Vessel Use**

**SECTION E1: Offshore Survey**

**SECTION E2: Nearshore Survey**

**SECTION E3: Vessel Use**

## **SECTION F1: Site Cleanup**

## **SECTION G1: Well Authorization**

## **SECTION G2: Onland Exploration**

## **SECTION G3: Offshore Exploration**

## **SECTION G4: Rig**

## **SECTION H1: Vessel Use**

## **SECTION H2: Disposal At Sea**

## **SECTION I1: Municipal Development**

### **Qanurittuq Ittunik Avatinga: Avatingalluanga**

Samples will be collected from publicly accessible beaches in Iqaluit.

### **Qanurittuq Ittunik Avatinga: Inuuhimayunut Avatinga**

### **Qanurittuq Ittunik Avatinga: Inungit-maniliurutingit Avatinga**

Samples will be collected from publicly accessible beaches in Iqaluit.

## **Miscellaneous Project Information**

### **Naunaiyainiq ukuninnga Ayurhautingit unalu Piumayaat Ikikliyuumiutinahuarutit**

We do not foresee any impacts on the environment, wildlife or people as a result of this study or the sample collection. We will not collect any sediment that is being used by wildlife, and if at any time there is a threat to disturbing wildlife, all sampling will stop.

### **Tamatkiumayunik Ihuikgutivaktunik**



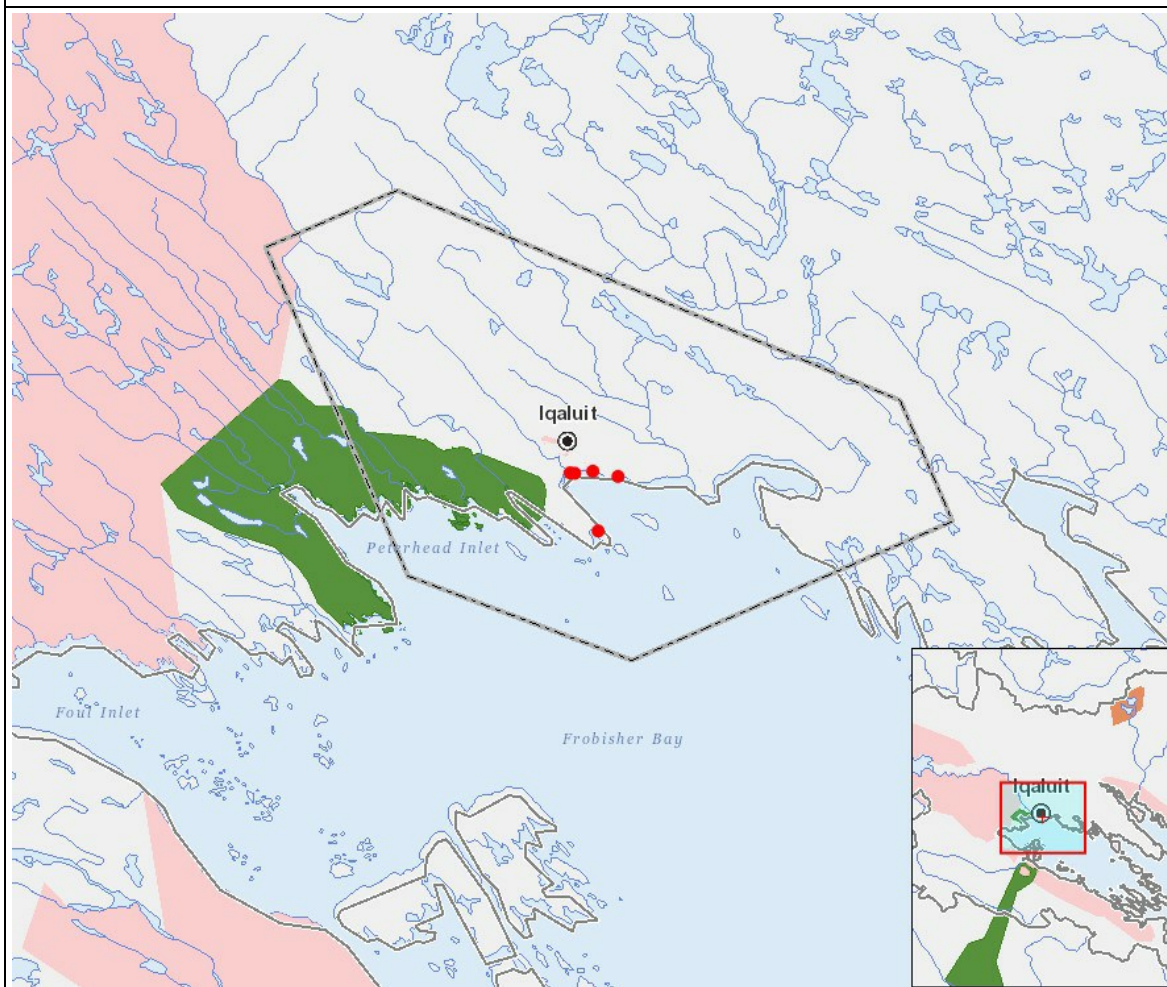
Impacts

Ilitariyauniq Avatiliriniqmut Ayurhautingit

		PHYSICAL	Designated environmental areas	Ground stability	Permafrost	Hydrology / Limnology	Water quality	Climate conditions	Eskers and other unique or fragile landscapes	Surface and bedrock geology	Sediment and soil quality	Tidal processes and bathymetry	Air quality	Noise levels	BIOLOGICAL	Vegetation	Wildlife, including habitat and migration patterns	Birds, including habitat and migration patterns	Aquatic species, incl. habitat and migration/spawning	Wildlife protected areas	SOCIO-ECONOMIC	Archaeological and cultural historic sites	Employment	Community wellness	Community infrastructure	Human health
Havakvinga																										
-		-	-	-	-	-	-	-	-	-	-	-	-	-	-	-	-	-	-	-	-	-	-	-	-	-
Aulapkaininnga																										
-		-	-	-	-	-	-	-	-	-	-	-	-	-	-	-	-	-	-	-	-	-	-	-	-	-
Piiqtauniq																										
-		-	-	-	-	-	-	-	-	-	-	-	-	-	-	-	-	-	-	-	-	-	-	-	-	-

(P = Nakuuyuq, N = Nakuungittut unalu mikhilimaittuq, M = Nakuungittut unalu mikhittaaqtuq, U = Naluyauyuq)

## Havaariyauyukhamut Nayugaa



### List of Project Geometries

1	point	Site 1
2	point	Site 2
3	point	Site 3
4	point	Site 4
5	point	Site 5