

$\triangleleft \triangleright^{\text{qb}} \cap_{\mathcal{Q}}^{\text{qb}} \supset^< \cup_{\mathcal{P}} \triangleright^{\text{q}} \delta^{\omega} \mathbb{L} \triangleleft \nabla^{\omega} \Gamma \nabla \cap^{\omega}$



- December, 2006: NIRB issued Project Certificate (PC) No. 004
- በጥላቢ, 2006: ልዩነት ስርዓት ለጥላቢ
ለጥላቢ (PC) ቁጥር 004
- In 2007, Agnico Eagle Mines Limited acquired the Meadowbank Gold Mine
- ሰኔ 2007, ልዩነት ስርዓት ለጥላቢ
ለጥላቢ (PC) ቁጥር 004
- In 2009, 2016 and 2018, the NIRB amended the PC. 004
- ሰኔ 2009, 2016 እና 2018, ልዩነት ስርዓት
ለጥላቢ (PC) ቁጥር 004
- 87 terms and conditions to limit adverse ecosystemic and socioeconomic effects
- 87 የአካባቢ ልውውጥ ለጥላቢ
ለጥላቢ (PC) ቁጥር 004

Project Overview

Mine site 70 km
north of Baker Lake

Camp

Airstrip

Mining infrastructure

Three open pits

Portage

Bay Goose (closed)

Vault

Baker Lake bulk fuel storage facility/marshalling area

Fuel tank farm

Laydown area

110 km all-weather road linking Baker Lake to Meadowbank site

$\triangleright \zeta^b \zeta^c \zeta^d \zeta^e \zeta^f \zeta^g \zeta^h \zeta^i \zeta^j \zeta^k \zeta^l \zeta^m \zeta^n \zeta^o \zeta^p \zeta^q \zeta^r \zeta^s \zeta^t \zeta^u \zeta^v \zeta^w \zeta^x \zeta^y \zeta^z$
 $\rho \zeta^a \zeta^b \zeta^c \zeta^d \zeta^e \zeta^f \zeta^g \zeta^h \zeta^i \zeta^j \zeta^k \zeta^l \zeta^m \zeta^n \zeta^o \zeta^p \zeta^q \zeta^r \zeta^s \zeta^t \zeta^u \zeta^v \zeta^w \zeta^x \zeta^y \zeta^z$
 $b \zeta^a \zeta^b \zeta^c \zeta^d \zeta^e \zeta^f \zeta^g \zeta^h \zeta^i \zeta^j \zeta^k \zeta^l \zeta^m \zeta^n \zeta^o \zeta^p \zeta^q \zeta^r \zeta^s \zeta^t \zeta^u \zeta^v \zeta^w \zeta^x \zeta^y \zeta^z$

- $\Lambda C_n \triangleleft \Delta^b$
- $\Gamma^c C_n \triangleleft \Delta^b$
- $\Delta \times C_n \triangleleft \Delta^b$

$$\begin{array}{c} \Lambda^a \bar{L}^j \sigma^b \\ \triangleright \bar{\psi}^b C \bar{L} \triangleleft \psi^a C^b \end{array}$$

- $\triangleright \triangleleft \cap^b$
- $< \Delta \ J^h \ (\triangleright d \triangleleft^{\mathfrak{b}} \supset^{\mathfrak{b}})$
- $\gg \triangleright^c$

[illegible]

- $\Delta^{ab} \Gamma \Delta \Gamma \Delta^b$
- $\Lambda^{cd} \Gamma^c \Delta^c \Gamma \Delta^d$

110 $\cap_{\mathcal{C}} \Gamma_{\mathcal{C}}^{\vee} \triangleleft {}^{\mathfrak{c}}\mathcal{D}^{\mathfrak{c}}$
 ${}^{\mathfrak{c}}\mathcal{B} \subseteq \sigma_{\mathcal{C}} \triangleleft {}^{\mathfrak{c}}\Gamma_{\mathcal{C}}^{\mathfrak{c}}$
 $\triangleleft {}^{\mathfrak{c}}\mathcal{B} \cap {}^{\mathfrak{c}}\mathcal{B} \triangleleft {}^{\mathfrak{c}}\mathcal{C}$



[illegible]

- March 2018: NIRB Project Certificate (PC) No. 008 issued to Agnico Eagle Mines Limited
- April 2018: Agnico Eagle Mines Limited PC No. 008 issued to Agnico Eagle Mines Limited
- 64 terms and conditions to limit adverse ecosystemic and socioeconomic effects
- 64 terms and conditions to limit adverse ecosystemic and socioeconomic effects

Project Overview

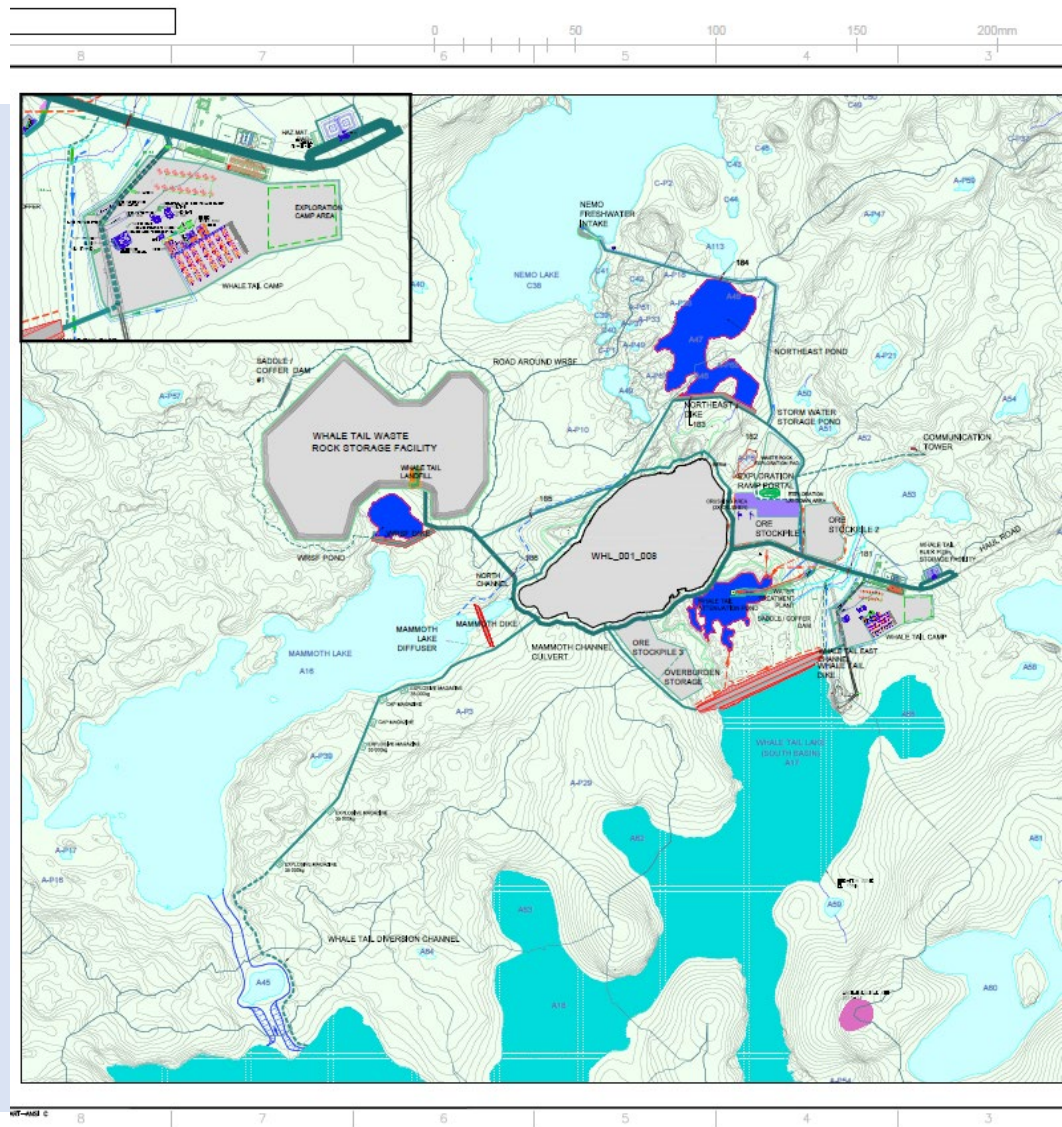
~150 kilometres (km) N of Baker
Lake and ~50 km NW of
Meadowbank Gold Mine Project

~150 P_CI D^b b_a^a q^a l σ^a f^a b L σ' D^a < d^a L
~50 P_CI D^b D^a < q^a l σ^a < > f^a n_a f^a D^a <
D^a f^a C_n < f^a Δ^a l C

Whale Tail Pit Project located at the Amaruq Property

የዋጋው ምን ያህል ሊጨምር ይችላል፡

- Open pit gold mining
- Supporting infrastructure at Amaruq Property
- Use of existing infrastructure at Meadowbank
- Haul road
- $\text{H}_2\text{O} + \text{CO}_2 \rightarrow \text{H}_2\text{CO}_3$
- $\text{H}_2\text{CO}_3 + \text{CaCO}_3 \rightarrow \text{Ca}^{2+} + \text{HCO}_3^-$
- $\text{Ca}^{2+} + \text{HCO}_3^- \rightarrow \text{CaCO}_3 + \text{H}_2\text{O}$
- $\text{CaCO}_3 + \text{H}_2\text{O} \rightarrow \text{Ca}^{2+} + \text{HCO}_3^-$



$$b \cap L^c \not\geq \sigma^a \cup \sigma \triangleleft D^c d \cup D^c b \triangleright^c \triangleright d \sigma^a$$

◁▷^{ᶜᵇ} ∩ _{ᶜᵇ} ⊆ Γ ∪ ⊆ Δ^{ᶜᵇ} ∖ ^{ᶜᵇ}

- $d\Delta C\Delta C\sigma^c \rfloor^c$
- ${}^c b \triangleright \lambda^c {}^c b \rfloor^a \sigma \sigma^c \wr \Pi \sigma^b$
- ${}^c b \triangleright \lambda^c \sigma^c \Gamma \Delta \subset \triangleright \wr {}^c b \rfloor^a \sigma$
 - $L^c b \Delta <^b \rfloor^c {}^c b \triangleright \lambda^c \Pi \triangleright \sigma \Pi^b$
 - $\triangleright \sigma \sigma^c {}^c b \triangleright \lambda^c \Pi \triangleright \sigma \Pi^b$
- $> \wr {}^c b \rfloor \triangleleft {}^c b C\Delta C\sigma^c {}^c b$
- $\rho \subset \triangleright^c {}^c b \sigma \Delta \sigma^c \Pi (\Delta \rho \Pi^c \rho \delta^c \Gamma \triangleleft C d \sigma^b)$
- $\sigma \sigma \Gamma \triangleright C \Delta^c \sigma^c \wr \Pi^c \triangleleft \sigma \Pi \Pi^c \wr^c \rfloor^c \Gamma \triangleleft \sigma \Pi \wr \triangleright \sigma^c \Pi^a \sigma^c <^c \sigma \triangleright^c$
- $\Delta L^c \Gamma \triangleright C \Delta^c \sigma \sigma^c d \Pi^c \Pi$
- $\sigma \wedge {}^c b \rfloor \sigma^c \Pi {}^c b \triangleright \lambda^c \Pi \triangleright \sigma$

[illegible]

A wide-angle photograph of a construction site under a cloudy sky. In the foreground, there is a pile of rebar and a large metal plate. In the middle ground, a yellow school bus is parked next to a yellow excavator. In the background, several large, cylindrical storage tanks are visible.



A gravel road leads towards a sign with a truck icon, indicating a truck stop or a road where trucks are allowed. The road is made of gravel and stretches into the distance under a cloudy sky. The sign is a green circle with a white truck icon, mounted on a wooden post. The surrounding landscape is flat and grassy.



[illegible]

Meadowbank Gold Mine Project 2018 Site Visit and Observations

ᐱᐃᐅᐅᐅᐅ ᐱᐃᐅᐅᐅᐅ ᐱᐃᐅᐅᐅᐅ 2018 ᐱᐃᐅᐅᐅᐅᐅᐅᐅ ᐱᐃᐅᐅᐅᐅᐅᐅᐅᐅ

Dust Management / >ᐅᐅᐅᐅᐅᐅᐅᐅ ᐱᐃᐅᐅᐅᐅᐅᐅᐅ



Wildlife Management / ᐅᐅᐅᐅᐅ ᐱᐃᐅᐅᐅᐅᐅᐅᐅ



Previous Board Recommendations Summary

Whale Tail Pit Project

- Submission of Plans, Reports and Information
- Verification that plans meet conditions
 - Air Quality and Dustfall Management Plan
 - Permafrost Monitoring
 - Fisheries Offsetting Plan

[illegible]

- $\angle QPN, \angle S^c b^c$ \simeq $\angle H^c b^c$
 $\simeq \angle S^c b^c$
- $\angle R^c S^c P^c \simeq \angle S^c$
 $\simeq \angle H^c b^c \simeq \angle S^c$
 - $\angle C^c \simeq \angle b^c \Delta S^c$
 $\simeq \angle b^c \simeq \angle S^c \simeq \angle C^c \simeq \angle S^c$
 - $\Delta C^c \simeq \angle R^c P^c S^c$
 $\simeq \angle H^c b^c \simeq \angle S^c$
 - $\Delta b^c \simeq \angle C^c \simeq \angle b^c \simeq \angle S^c$

Whale Tail Pit Project 2018 Site Visit and Observations ᖃᕈᓇᓗᓕᓂᓐ ᑕᓕᓂᓐᓴᑦ ᑕᓂᓐᓴᑦᑕᓂᓐᓴᑦᑕᓂᓐ 2018 ᑕᓂᓐᓴᑦᑕᓂᓐᓴᑦᑕᓂᓐ ᖃᕈᓇᓗᓐᓴᑦᑕᓂᓐ

Amaruq Haul Road and Main Site / ᑕᓂᓐᓴᑦᑕᓂᓐᓴᑦᑕᓂᓐ ᑕᓂᓐᓴᑦᑕᓂᓐᓴᑦᑕᓂᓐ



Wildlife Management / ᓂᓐᓴᑦᑕᓂᓐ ᑕᓂᓐᓴᑦᑕᓂᓐᓴᑦᑕᓂᓐ



Community Monitoring Consultation

[illegible]

- 2018 Community Meeting
 - Community members from Baker Lake noted concerns on the following:
 - Dust suppression along the all-weather access road
 - Health of wildlife
 - Monitoring conducted at site



Socio-Economic Summary

- Socio-economic Monitoring Plan and Socio-economic Monitoring Report submitted June, 2019 to the Kivalliq Socio Economic Monitoring Committee and NIRB
- Total of 241 Inuit employees out of 767 total workforce at the end of 2018
 - 4% skilled Inuit employees
 - 35% semi-skilled Inuit employees
- Three main categories of training provided: Health and Safety, General (including Emergency Response Team), and Specific training
 - 10 hours of mandatory training were provided to each Inuit employee
 - 84 specific training hours were received per each Inuit employee on average

- **Δορυπύς Αρσενικόδοσ**
 - 56 Δορυπύς Αρσενικόδοσ 2019
 - 2019 Δορυπύς Αρσενικόδοσ
 - 60 Δορυπύς Αρσενικόδοσ
- **60 Δορυπύς Αρσενικόδοσ**
 - 4% Δορυπύς Αρσενικόδοσ
 - 35% Δορυπύς Αρσενικόδοσ
- **Δορυπύς Αρσενικόδοσ**
 - 10 Δορυπύς Αρσενικόδοσ
 - 84 Δορυπύς Αρσενικόδοσ

NIRB'S 2018 EVALUATION of the MEADOWBANK GOLD MINE PROJECT

Indicator	Rating	Comments
Water Quality and Waste Management	Satisfactory	<ul style="list-style-type: none">• No non-compliance issues noted by CIRNAC inspectors in August 2018.• Exceedances of some contaminants are predicted;• Detection limits for water quality in pits need to be reassessed;• Core-Receiving Environment Monitoring Program updates requested by regulators.
Project Alternatives	Satisfactory	<ul style="list-style-type: none">• In-Pit Tailings Disposal Modification was approved as Amendment 3 to the Project Certificate 004 on December 21, 2018 with one new term and condition.
All Weather Private Access Road (AWAR)	Good	<ul style="list-style-type: none">• Some safety concerns raised regarding surface dust suppressants not being applied on entire AWAR; ongoing issue.
Fish and Fish Habitat	Good	<ul style="list-style-type: none">• Participation in creel surveys (fish harvesting; TC 51) ongoing issue.
Wildlife and Terrestrial	Need Improvement	<ul style="list-style-type: none">• Participation in hunter harvest surveys (TC 54) ongoing issue.• Revisions to wildlife monitoring for caribou, birds, road surveys, adaptive management, problem carnivores, blasting, and Terrestrial Ecosystem Management Plan (TEMP) revisions.

ᐊᓚᐅᓕᓚᓐᑦ 2018 ᖃᓄᓐᓴᖃᓄᓐᑦ ᐊᓄᖃᐅᓐᓴᓄᓐᑦ ᓂᓐᓴᓄᓐᓴᓄᓐᑦ

ᓐᓴᓐᓴᓄᓐᑦ	ᖃᓄᓐᓴᓄᓐᑦ	ᓄᖃᓄᓐᓴᓄᓐᑦ:
ᐊᓄᓄᓐᓴᓄᓐᑦ ᐊᓄᓄᓐᓴᓄᓐᑦ ᖃᓄᓐᓴᓄᓐᓴᓄᓐᑦ	ᓐᓴᓐᓴᓄᓐᑦ	<ul style="list-style-type: none"> ᓚᓚᓐᓴᓄᓐᑦ ᓴᓴᓄᓐᓴᓄᓐᑦ ᐅᓄᓚᓄᓐᓴᓄᓐᑦ ᐊᓄᓄᓐᓴᓄᓐᑦ ᖃᓄᓐᓴᓄᓐᓴᓄᓐᑦ ᐊᓄᓄᓐᓴᓄᓐᑦ 2018. ᓄᓐᓴᓄᓐᓴᓄᓐᑦ ᐊᓄᓄᓐᓴᓄᓐᑦ ᓄᓚᓄᓐᓴᓄᓐᑦ; ᓴᓚᓄᓐᓴᓄᓐᑦ ᖃᓄᓐᓴᓄᓐᓴᓄᓐᑦ ᐊᓄᓄᓐᓴᓄᓐᑦ ᖃᓄᓐᓴᓄᓐᓴᓄᓐᑦ; ᓄᓐᓴᓄᓐᓴᓄᓐᑦ ᖃᓄᓐᓴᓄᓐᓴᓄᓐᑦ ᓚᓚᓄᓐᓴᓄᓐᑦ ᐊᓄᓄᓐᓴᓄᓐᑦ.
ᐊᓄᓄᓐᓴᓄᓐᑦ ᐊᓄᓄᓐᓴᓄᓐᑦ	ᓐᓴᓐᓴᓄᓐᑦ	<ul style="list-style-type: none"> ᓄᓐᓴᓄᓐᓴᓄᓐᑦ ᐊᓄᓄᓐᓴᓄᓐᑦ ᓚᓚᓄᓐᓴᓄᓐᑦ ᐊᓄᓄᓐᓴᓄᓐᑦ 3 ᐊᓄᓄᓐᓴᓄᓐᑦ ᓚᓚᓄᓐᓴᓄᓐᑦ 004 ᓄᓄᓄᓐᓴᓄᓐᑦ ᐅᓄᓚᓄᓐᓴᓄᓐᑦ 21, 2018 ᓄᓄᓄᓐᓴᓄᓐᑦ ᓚᓚᓄᓐᓴᓄᓐᑦ ᐊᓄᓄᓐᓴᓄᓐᑦ.
ᓴᓄᓄᓐᓴᓄᓐᑦ ᐊᓄᓄᓐᓴᓄᓐᑦ (AWAR)	ᐊᓄᓄᓐᓴᓄᓐᑦ	<ul style="list-style-type: none"> ᖃᓄᓐᓴᓄᓐᓴᓄᓐᑦ ᐊᓄᓄᓐᓴᓄᓐᑦ ᐊᓄᓄᓐᓴᓄᓐᑦ ᐊᓄᓄᓐᓴᓄᓐᑦ; ᐊᓄᓄᓐᓴᓄᓐᑦ ᐊᓄᓄᓐᓴᓄᓐᑦ.
ᐊᓄᓄᓐᓴᓄᓐᑦ ᓄᓄᓄᓐᓴᓄᓐᑦ	ᐊᓄᓄᓐᓴᓄᓐᑦ	<ul style="list-style-type: none"> ᐊᓄᓄᓐᓴᓄᓐᑦ ᖃᓄᓐᓴᓄᓐᓴᓄᓐᑦ ᐊᓄᓄᓐᓴᓄᓐᑦ (ᐊᓄᓄᓐᓴᓄᓐᑦ; TC 51) ᐊᓄᓄᓐᓴᓄᓐᑦ.
ᓄᓄᓄᓐᓴᓄᓐᑦ ᓄᓄᓄᓐᓴᓄᓐᑦ	ᐊᓄᓄᓐᓴᓄᓐᑦ	<ul style="list-style-type: none"> ᓚᓚᓄᓐᓴᓄᓐᑦ ᖃᓄᓐᓴᓄᓐᓴᓄᓐᑦ ᐊᓄᓄᓐᓴᓄᓐᑦ (TC 54) ᐊᓄᓄᓐᓴᓄᓐᑦ. ᐊᓄᓄᓐᓴᓄᓐᑦ ᓄᓄᓄᓐᓴᓄᓐᑦ ᖃᓄᓐᓴᓄᓐᓴᓄᓐᑦ ᐊᓄᓄᓐᓴᓄᓐᑦ, ᐊᓄᓄᓐᓴᓄᓐᑦ, ᐊᓄᓄᓐᓴᓄᓐᑦ ᖃᓄᓐᓴᓄᓐᓴᓄᓐᑦ, ᓚᓚᓄᓐᓴᓄᓐᑦ ᐊᓄᓄᓐᓴᓄᓐᑦ, ᖃᓄᓐᓴᓄᓐᓴᓄᓐᑦ, ᐊᓄᓄᓐᓴᓄᓐᑦ ᓄᓄᓄᓐᓴᓄᓐᑦ ᐊᓄᓄᓐᓴᓄᓐᑦ (TEMP) ᐊᓄᓄᓐᓴᓄᓐᑦ.

NIRB'S 2018 EVALUATION of the MEADOWBANK GOLD MINE PROJECT

Indicator	Rating	Comments
Marine Environment	Good	<ul style="list-style-type: none">Local marine mammal monitors were not fully utilized in 2017 season; Agnico Eagle has committed to improving training and hiring of marine mammal monitors.
Noise	Satisfactory	<ul style="list-style-type: none">Blasting threshold exceedances recorded for fish and fish habitat, however the protocols and monitoring were committed to be improved on by Agnico Eagle.
Air Quality	Needs Improvement	<ul style="list-style-type: none">While Agnico Eagle is making efforts to improve the management of dust, its method and extent of dust suppression still do not meet the requirements of the Project Certificate.
Accidents and Malfunctions	Good	<ul style="list-style-type: none">The number of reportable spills has decreased 18% since 2016, but the number of non-reportable spills has increased 2%. Agnico Eagle has committed to improve reporting of spills.
Socio-Economic	Good	<ul style="list-style-type: none">Kivalliq Projects Socio-economic Monitoring Program and Report submitted June, 2019; To be reviewed by parties.

ᐃᑦᑎᑦᑕᑦᑕ 2018 ᑦᑎᐅᐱᑦᑕᑦᑕ ᐃᐅᑦᑎᑦᑕᑦᑕ ᑕᐱᐅᐱᑦᑕᑦᑕ

[illegible]

NIRB'S 2018 EVALUATION of the WHALE TAIL PIT PROJECT

Indicator	Rating	Comments
Air Quality	Needs Improvement	<ul style="list-style-type: none">• While Agnico Eagle is making efforts to improve the management of dust along the Whale Tail Haul Road, its method and extent of dust suppression still do not meet the requirements of the Project Certificate.• Monitoring methods for dustfall need improvement.
Noise and Vibration	Satisfactory	<ul style="list-style-type: none">• Blasting threshold exceedances recorded for fish and fish habitat, however the protocols and monitoring were committed to be improved on by Agnico Eagle.
Marine Environment	Good	<ul style="list-style-type: none">• Local marine mammal monitors were not fully utilized in 2017 season; Agnico Eagle has committed to improving training and hiring of marine mammal monitors. Some improvements in 2018 but more improvements to survey protocols may be necessary.
Geological Features, Soils and Permafrost	Satisfactory	<ul style="list-style-type: none">• Some concerns regarding permafrost monitoring and thermal modelling in 2017, that remain unresolved in 2018 monitoring period. Agnico Eagle has committed to providing more information in 2019 Annual Report.

ᐊᑦᑎᑦᑕᑦ 2018 ᑦᑲᐅᑦᑦᑦᑦᑦᑦ ᑦᑲᑦᑦᑦᑦᑦᑦ ᑦᑲᑦᑦᑦᑦᑦᑦ

[illegible]

NIRB'S 2018 EVALUATION of the WHALE TAIL PIT PROJECT

Indicator	Rating	Comments
Surface Water and Sediment Quality	Satisfactory	<ul style="list-style-type: none">No concerns noted during site inspections (CIRNAC) for Whale Tail dyke, North and South ponds, powerhouse and fuel tanks.
Aquatic Environment	Satisfactory	<ul style="list-style-type: none">As-built design report for culvert construction to be provided; adherence to blasting thresholds for fish; Fishout program for Whale Tail Lake was completed – concerns raised regarding the fish-out target being met.
Terrestrial Wildlife and Wildlife Habitat	Needs Improvement	<ul style="list-style-type: none">Participation in hunter harvest surveys (TC 54) ongoing issue.Revisions to wildlife monitoring for caribou, birds, road surveys, adaptive management, problem carnivores, blasting and Terrestrial Ecosystem Management Plan (TEMP) revisions.
Socio-economic	Good	<ul style="list-style-type: none">Kivalliq Projects Socio-Economic Monitoring Program and 2018 Report submitted June, 2019. To be reviewed by parties.

ᐱᑦᐱᑦᐱᑦ 2018 ᑦᐱᑦᐱᑦᐱᑦ ᑦᐱᑦᐱᑦᐱᑦ ᐱᑦᐱᑦᐱᑦ
ᐱᑦᐱᑦᐱᑦᐱᑦᐱᑦᐱᑦ

[illegible]

Questions? $\Delta \wedge^{\text{sb}} d \cap^{\text{bL}} \text{sb}^{\text{sb}} \dot{\wedge}^{\text{c}}?$