



NIRB Application for Screening #125488

CBC Program the Wild Canadian Year

Application Type: New

Project Type: Scientific Research

Application Date: 9/27/2019 1:09:09 PM

Period of operation: from 0001-01-01 to 0001-01-01

Proposed Authorization: from 0001-01-01 to 0001-01-01

Project Proponent: Alex Burr
Wild Year Productions
3683 West 4th Ave
Vancouver BC V6R 1P2
Canada
Phone Number:: 778-379-3055, Fax Number::

DETAILS

Non-technical project proposal description

English: The Wild Canadian Year is a documentary series to be broadcast in fall 2017 on CBC's The Nature of Things with David Suzuki. We are looking at wildlife from across the country within the framework of the changing seasons throughout the course of five episodes. For our 'spring' program, we would love to tell the story of the Qamanirjuac caribou herd on their calving ground - the relationship between mother and new calf, and the natural challenges they face upon entry into the world.

French: N/A

Inuktitut: N/A

Inuinnaqtun: N/A

Personnel

Personnel on site: 4

Days on site: 10

Total Person days: 40

Operations Phase: from 2016-05-28 to 2016-06-14

Activities

Location	Activity Type	Land Status	Site history	Site archaeological or paleontological value	Proximity to the nearest communities and any protected areas
Qamanirjuac Calving Area	Scientific/International Polar Year Research	Inuit Owned Surface Lands	As we are strictly observing/filming caribou (from considerable distances), and we are not intending to set up any sort of camp, we do not foresee any sort of environmental impacts arising from our activities. Any and all refuse will be packed out. We will be overnighing in Rankin inlet and flying out daily by helicopter to film the herd.	N/A	Rankin Inlet, Arviat, Whale Cove. Qamanirjuac Caribou Calving Area

Community Involvement & Regional Benefits

Community	Name	Organization	Date Contacted
Information is not available			

Authorizations

Indicate the areas in which the project is located:

Kivalliq

Authorizations

Regulatory Authority	Authorization Description	Current Status	Date Issued / Applied	Expiry Date
Government of Nunavut, Department of Environment	Wildlife Observation License	Not Yet Applied		
Kivalliq Inuit Association	Permit	Not Yet Applied		

Project transportation types

Transportation Type	Proposed Use	Length of Use
Air	To track and film caribou, using a mounted high-powered camera that allows crew to film from a distance of up to 1 KM away.	

Project accomodation types

Community

Material Use

Equipment to be used (including drills, pumps, aircraft, vehicles, etc)

Equipment Type	Quantity	Size - Dimensions	Proposed Use
Helicopter	1	A-Star 350B2	350B2 To track and film caribou, using a mounted high-powered camera that allows crew to film from a distance of up to 1 KM away.

Detail Fuel and Hazardous Material Use

Detail fuel material use:	Fuel Type	Number of containers	Container Capacity	Total Amount	Units	Proposed Use
Aviation fuel	fuel	10	205	2050	Liters	For helicopter

Water Consumption

Daily amount (m3)	Proposed water retrieval methods	Proposed water retrieval location
0		

Waste

Waste Management

Project Activity	Type of Waste	Projected Amount Generated	Method of Disposal	Additional treatment procedures
Scientific/International Polar Year Research	Sewage (human waste)	<10 L	Burial if necessary	Carry-out if necessary

Environmental Impacts:

As we are strictly observing/filming caribou (from considerable distances), and we are not intending to set up any sort of camp, we do not foresee any sort of environmental impacts arising from our activities. Any and all refuse will be packed out. We will be overnighing in Rankin inlet and flying out daily by helicopter to film the herd.

Additional Information

SECTION A1: Project Info

SECTION A2: Allweather Road

SECTION A3: Winter Road

SECTION B1: Project Info

SECTION B2: Exploration Activity

SECTION B3: Geosciences

SECTION B4: Drilling

SECTION B5: Stripping

SECTION B6: Underground Activity

SECTION B7: Waste Rock

SECTION B8: Stockpiles

SECTION B9: Mine Development

SECTION B10: Geology

SECTION B11: Mine

SECTION B12: Mill

SECTION C1: Pits

SECTION D1: Facility

SECTION D2: Facility Construction

SECTION D3: Facility Operation

SECTION D4: Vessel Use

SECTION E1: Offshore Survey

SECTION E2: Nearshore Survey

SECTION E3: Vessel Use

SECTION F1: Site Cleanup

SECTION G1: Well Authorization

SECTION G2: Onland Exploration

SECTION G3: Offshore Exploration

SECTION G4: Rig

SECTION H1: Vessel Use

SECTION H2: Disposal At Sea

SECTION I1: Municipal Development

Description of Existing Environment: Physical Environment

As we are strictly observing/filming caribou (from considerable distances), and we are not intending to set up any sort of camp, we do not foresee any sort of environmental impacts arising from our activities. Any and all refuse will be packed out. We will be overnighing in Rankin inlet and flying out daily by helicopter to film the herd.

Description of Existing Environment: Biological Environment

Description of Existing Environment: Socio-economic Environment

Miscellaneous Project Information

Identification of Impacts and Proposed Mitigation Measures

Cumulative Effects

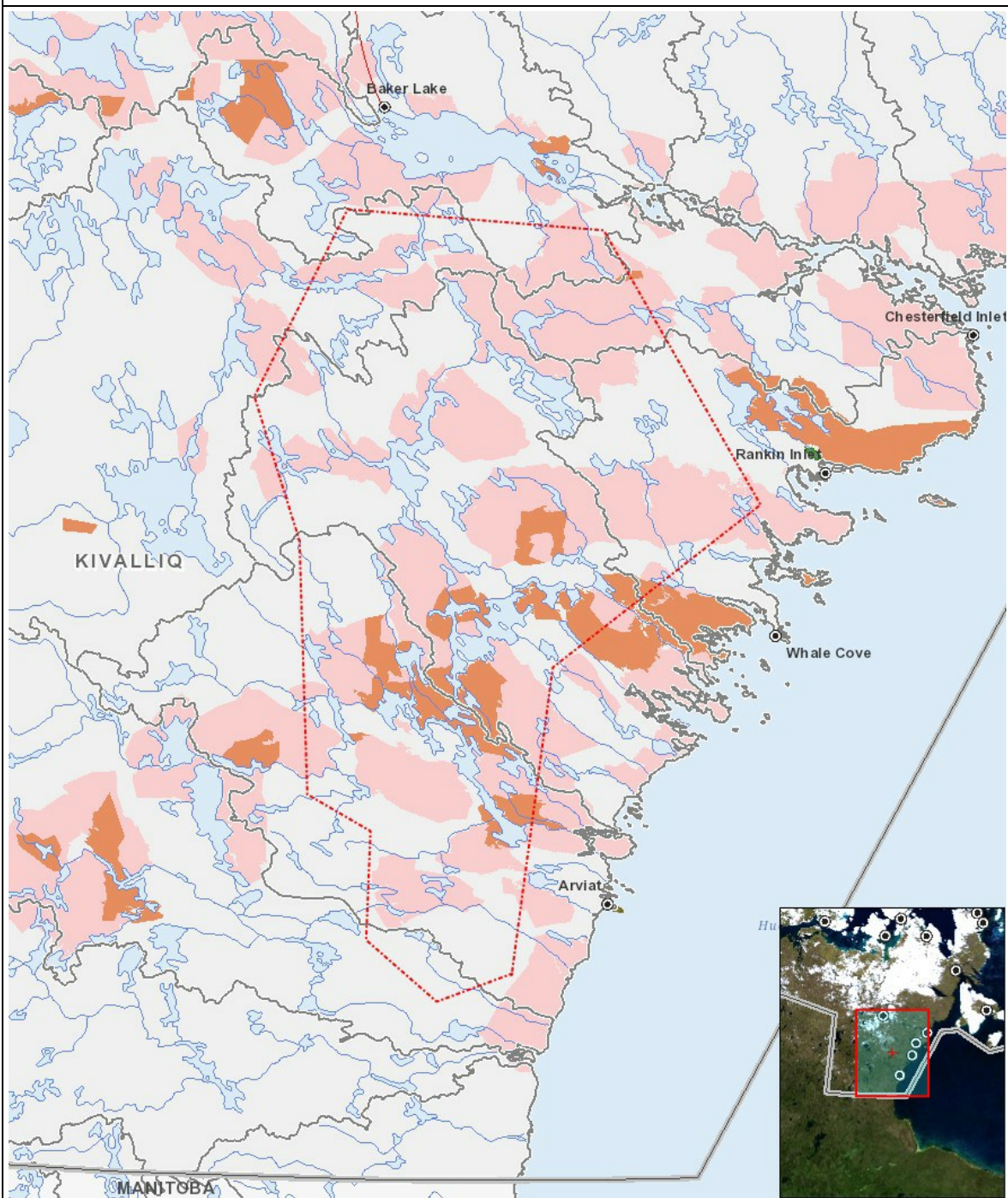
Impacts

Identification of Environmental Impacts

		PHYSICAL	Designated environmental areas	Ground stability	Permafrost	Hydrology / Limnology	Water quality	Climate conditions	Eskers and other unique or fragile landscapes	Surface and bedrock geology	Sediment and soil quality	Tidal processes and bathymetry	Air quality	Noise levels	BIOLOGICAL	Vegetation	Wildlife, including habitat and migration patterns	Birds, including habitat and migration patterns	Aquatic species, incl. habitat and migration/spawning	Wildlife protected areas	SOCIO-ECONOMIC	Archaeological and cultural historic sites	Employment	Community wellness	Community infrastructure	Human health
Construction																										
-		-	-	-	-	-	-	-	-	-	-	-	-	-		-	-	-	-	-		-	-	-	-	-
Operation																										
-		-	-	-	-	-	-	-	-	-	-	-	-	-		-	-	-	-	-		-	-	-	-	-
Decommissioning																										
-		-	-	-	-	-	-	-	-	-	-	-	-	-		-	-	-	-	-		-	-	-	-	-

(P = Positive, N = Negative and non-mitigatable, M = Negative and mitigatable, U = Unknown)

Project Location



List of Project Geometries

1	polyline	Qamanirjuac Calving Area
---	----------	--------------------------