

**Demande de la CNER faisant l'objet d'un examen préalable #125488**  
**CBC Program the Wild Canadian Year**

# DÉTAILS

## Description non technique de la proposition de projet

Anglais: The Wild Canadian Year is a documentary series to be broadcast in fall 2017 on CBC's The Nature of Things with David Suzuki. We are looking at wildlife from across the country within the framework of the changing seasons throughout the course of five episodes. For our 'spring' program, we would love to tell the story of the Qamanirjuac caribou herd on their calving ground - the relationship between mother and new calf, and the natural challenges they face upon entry into the world.

Français: N/A

Inuktitut: N/A

Inuinnaqtun: N/A

## Personnel

Personnel on site: 4

Days on site: 10

Total Person days: 40

Operations Phase: from 2016-05-28 to 2016-06-14

## Activités

Emplacement	Type d'activité	Statut des terres	Historique du site	Site à valeur archéologique ou paléontologique	Proximité des collectivités les plus proches et de toute zone protégée
Qamanirjuac Calving Area	Scientific/International Polar Year Research	Inuit Owned Surface Lands	As we are strictly observing/filming caribou (from considerable distances), and we are not intending to set up any sort of camp, we do not foresee any sort of environmental impacts arising from our activities. Any and all refuse will be packed out. We will be overnighing in Rankin inlet and flying out daily by helicopter to film the herd.	N/A	Rankin Inlet, Arviat, Whale Cove. Qamanirjuac Caribou Calving Area

### Engagement de la collectivité et avantages pour la région

Collectivité	Nom	Organisme	Date de la prise de contact
Information is not available			

# Autorisations

Indiquez les zones dans lesquelles le projet est situé:

Kivalliq

## Autorisations

Organisme de régulation	Description des autorisations	État actuel	Date de l'émission/de la demande	Date d'échéance
Gouvernement du Nunavut, ministère de l'Environnement	Wildlife Observation License	Not Yet Applied		
Kivalliq Inuit Association	Permit	Not Yet Applied		

## Project transportation types

Transportation Type	Utilisation proposée	Length of Use
Air	To track and film caribou, using a mounted high-powered camera that allows crew to film from a distance of up to 1 KM away.	

## Project accomodation types

Collectivité

## Utilisation de matériel

Équipement à utiliser (y compris les perceuses, les pompes, les aéronefs, les véhicules, etc.)

Type d'équipement	Quantité	Taille – Dimensions	Utilisation proposée
Helicopter	1	A-Star 350B2	350B2 To track and film caribou, using a mounted high-powered camera that allows crew to film from a distance of up to 1 KM away.

Décrivez l'utilisation du carburant et des marchandises dangereuses

Décrivez l'utilisation de carburant :	Type de carburant	Nombre de conteneurs	Capacité du conteneur	Quantité totale	Unités	Utilisation proposée
Aviation fuel	fuel	10	205	2050	Liters	For helicopter

Consommation d'eau

Quantité quotidienne (m3)	Méthodes de récupération de l'eau proposées	Emplacement de récupération de l'eau proposé
0		

# Déchets

## Gestion des déchets

Activités du projet	Type des déchets	Quantité prévue	Méthode d'élimination	Procédures de traitement supplémentaires
Scientific/International Polar Year Research	Eaux usées (matières de vidange)	<10 L	Burial if necessary	Carry-out if necessary

## Répercussions environnementales :

As we are strictly observing/filming caribou (from considerable distances), and we are not intending to set up any sort of camp, we do not foresee any sort of environmental impacts arising from our activities. Any and all refuse will be packed out. We will be overnighing in Rankin inlet and flying out daily by helicopter to film the herd.

# **Additional Information**

**SECTION A1: Project Info**

**SECTION A2: Allweather Road**

**SECTION A3: Winter Road**

**SECTION B1: Project Info**

**SECTION B2: Exploration Activity**

**SECTION B3: Geosciences**

**SECTION B4: Drilling**

**SECTION B5: Stripping**

**SECTION B6: Underground Activity**

**SECTION B7: Waste Rock**

**SECTION B8: Stockpiles**

**SECTION B9: Mine Development**

**SECTION B10: Geology**

**SECTION B11: Mine**

**SECTION B12: Mill**

**SECTION C1: Pits**

**SECTION D1: Facility**

**SECTION D2: Facility Construction**

**SECTION D3: Facility Operation**

**SECTION D4: Vessel Use**

**SECTION E1: Offshore Survey**

**SECTION E2: Nearshore Survey**

**SECTION E3: Vessel Use**

**SECTION F1: Site Cleanup****SECTION G1: Well Authorization****SECTION G2: Onland Exploration****SECTION G3: Offshore Exploration****SECTION G4: Rig****SECTION H1: Vessel Use****SECTION H2: Disposal At Sea****SECTION I1: Municipal Development****Description de l'environnement existant : Environnement physique**

As we are strictly observing/filming caribou (from considerable distances), and we are not intending to set up any sort of camp, we do not foresee any sort of environmental impacts arising from our activities. Any and all refuse will be packed out. We will be overnighing in Rankin inlet and flying out daily by helicopter to film the herd.

**Description de l'environnement existant : Environnement biologique****Description de l'environnement existant : Environnement socio-économique****Miscellaneous Project Information****Identification des répercussions et mesures d'atténuation proposées****Répercussions cumulatives**

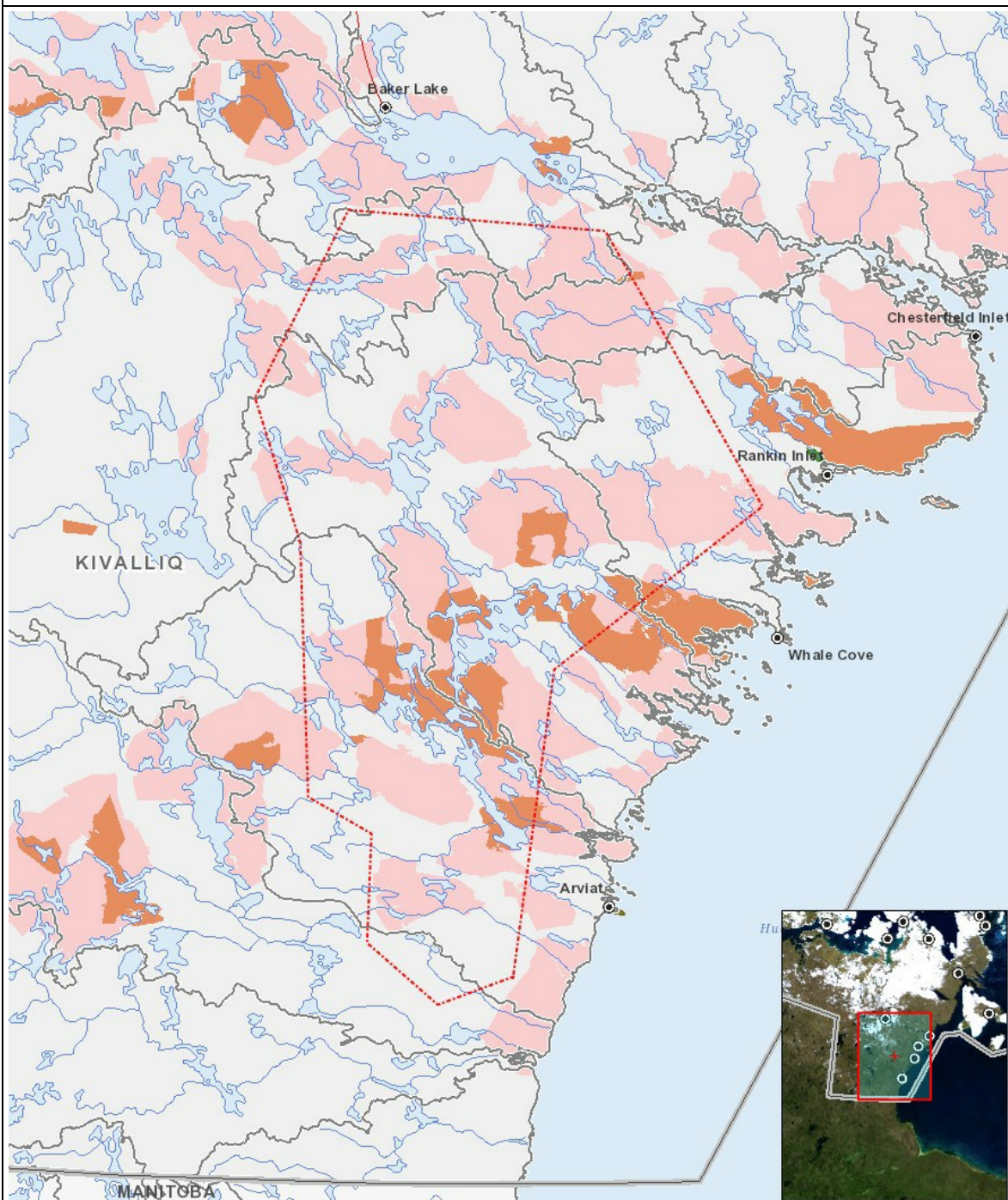
Impacts

Identification des répercussions environnementales

	PHYSICAL	Designated environmental areas	Ground stability	Permafrost	Hydrology / Limnology	Water quality	Climate conditions	Eskers and other unique or fragile landscapes	Surface and bedrock geology	Sediment and soil quality	Tidal processes and bathymetry	Air quality	Noise levels	BIOLOGICAL	Vegetation	Wildlife, including habitat and migration patterns	Birds, including habitat and migration patterns	Aquatic species, incl. habitat and migration/spawning	Wildlife protected areas	SOCIO-ECONOMIC	Archaeological and cultural historic sites	Employment	Community wellness	Community infrastructure	Human health
Construction	-	-	-	-	-	-	-	-	-	-	-	-	-	-	-	-	-	-	-	-	-	-	-	-	-
Exploitation	-	-	-	-	-	-	-	-	-	-	-	-	-	-	-	-	-	-	-	-	-	-	-	-	-
Désaffectation	-	-	-	-	-	-	-	-	-	-	-	-	-	-	-	-	-	-	-	-	-	-	-	-	-

(P = Positive, N = Négative et non gérable, M = Négative et gérable, U = Inconnue)

# Site du projet



## Liste des géométries de projet

1	polyline	Qamanirjuac Calving Area
---	----------	--------------------------