



ልዎሽ ጋካናሳፋሽጽጽ ልዛ ልዎል ጽፈጽፈጽ

ልዎሽ ጋካናሳፋሽጽጽ 2

ልዎሽ ጋካናሳፋሽጽ ልዛ ልዎል ጽፈጽፈጽ 2019

1

ልዛ ጽፈጽፈጽ ጽፈጽፈጽ

- ልዎሽ ጋካናሳፋሽጽጽ ልዛ ልዎል ጽፈጽፈጽ
- ጋካናሳፋሽጽ
- ልዎሽ ጋካናሳፋሽጽ ልዛ ልዎል ጽፈጽፈጽ
- ልዎሽ ጋካናሳፋሽጽ ልዛ ልዎል ጽፈጽፈጽ
- ልዎሽ ጋካናሳፋሽጽ ልዛ ልዎል ጽፈጽፈጽ

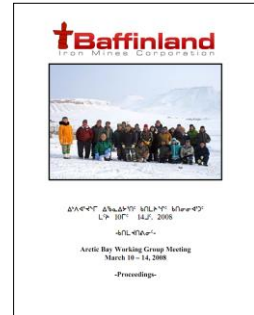


2

2

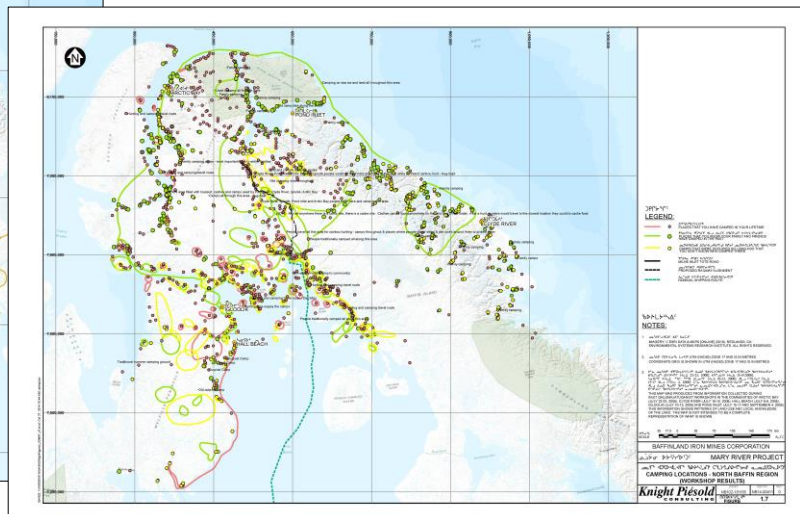
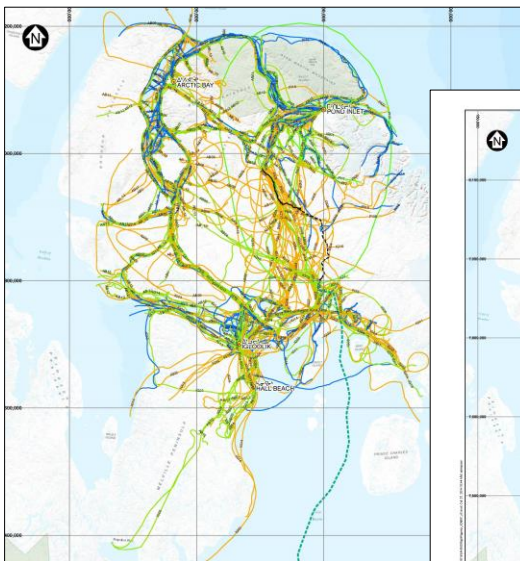
መጀመሪያ ልማት ክልላዊ ምርመራ ልማት (2006-2010)

- ልማት ልማት ክልላዊ ምርመራ
 - 5 ልማት ክልላዊ ምርመራ
 - ልማት ክልላዊ ምርመራ
 - ልማት ክልላዊ ምርመራ
 - ልማት ክልላዊ ምርመራ
 - ልማት ክልላዊ ምርመራ
 - ልማት ክልላዊ ምርመራ
 - ልማት ክልላዊ ምርመራ
- ልማት ክልላዊ ምርመራ
- ልማት ክልላዊ ምርመራ



9

9



10

10

ᐊᑐᑎᖃᖃᑐᑦ ᐊᑭᑎ ᐊᒻᒪᑐ ᐃᓂᑦᑕᑎᓪᓴᑦ- ᑭᓂᐃᑦᑕᑎᓪᓴᑦ ᐱᑦᑦᑕᐃᑦᑦ ᐃᖃᐃᑦᑕᑦ

- ᐃᑕᑦᐃᑎᑐᑦ ᐃᓂᐃᑦ ᖃᐃᑦᑕᑎᓪᓴᖃᖃᑦ
 - ᖃᐃᑦᑕᑎᓪᓴᖃᖃᑦ ᖃᓂᖃᖃ ᐃᓂᐃᑦ ᖃᐃᑦᑕᑎᓪᓴᖃᖃᑦ ᐊᖃᑭᑦᑕᑎᓪᓴᑦᑕᑦᑕᑦ ᐃᑦᑕᑦᐃᑦᑕᑎᓪᓴᖃᖃᑦ ᐃᑦᑕᑦᑕᑎᓪᓴᖃᖃᑦ
 - ᐃᓂᖃᑦᑕᑎᓪᓴᖃᖃᑦ ᐃᓂᐃᑦ ᐃᑕᐃᑦᑐᑎᖃ ᐃᑦᑕᑦᑕᑎᓪᓴᖃᖃᑦ ᑦᑕᑦᑕᑎᓪᓴᖃᖃᑦ
 - ᖃᐃᑦᑕᑎᓪᓴᖃᖃᑦ ᐊᑦᑐᐃᓪᓴᑦ ᐃᓂᑦᑕᑎᓪᓴᖃᖃᑦᑕᑦᑕᑦᑕᑦ
- ᐃᓂᐃᑦ ᐱᑦᑕᑎᓪᓴᖃᖃᑦᑕᑎᓪᓴᖃᖃᑦ, ᐃᖃᖃᓂᐃᑦᑕᑎᓪᓴᖃᖃᑦ ᐊᒻᒪᑐ ᓂᖃᑦᑕᑎᓪᓴᖃᖃᑦ ᐱᓂᖃᖃᑦᑕᑎᓪᓴᖃᖃᑦ
 - ᐃᓂᖃᑦᑕᑎᓪᓴᖃᖃᑦ ᐃᓂᐃᑦ ᐃᖃᖃᓂᐃᑦᑕᑎᓪᓴᖃᖃᑦ ᐊᒻᒪᑐ ᐱᑦᑕᑎᓪᓴᖃᖃᑦᑕᑎᓪᓴᖃᖃᑦ
 - ᐊᑐᑎᓪᓴᖃᖃᑦ ᐊᒻᒪᑐ ᐱᑦᑕᑦᑕᑎᓪᓴᖃᖃᑦ ᑦᑕᑦᑕᑎᓪᓴᖃᖃᑦ ᓂᖃᑦᑕᑎᓪᓴᖃᖃᑦ
- ᓂᓂᑦᑕᑦ ᐃᖃᑦᑕᑎᓪᓴᖃᖃᑦᑕᑎᓪᓴᖃᖃᑦ
 - ᓂᓂᑦᑕᑦ ᐃᖃᑦᑕᑎᓪᓴᖃᖃᑦ ᓂᓂᑦᑕᑦ ᐃᖃᑦᑕᑎᓪᓴᖃᖃᑦᑕᑎᓪᓴᖃᖃᑦ ᑕᑦᑕᑎᓪᓴᖃᖃᑦ ᐃᑦᑕᑦᑕᑎᓪᓴᖃᖃᑦ ᐊᒻᒪᑐ ᐃᑦᑕᑦᑕᑎᓪᓴᖃᖃᑦ ᐃᓂᐃᑦ ᐊᑦᑐᖃᑦᑕᑎᓪᓴᖃᖃᑦ ᐃᖃᑦᑕᑎᓪᓴᖃᖃᑦᑕᑎᓪᓴᖃᖃᑦ ᐊᑦᑕᑎᓪᓴᖃᖃᑦ



17

17

ᑐᑦᑕᑎᓪᓴᖃᖃᑦ ᐃᓂᖃᖃᑦ



TUSAQTAUT FOR PHASE 2 APPLICATION OF THE MARY RIVER PROJECT

Qikiqtani Inuit Association
June 14, 2019



Qikiqtani Inuit Association
September 26, 2019

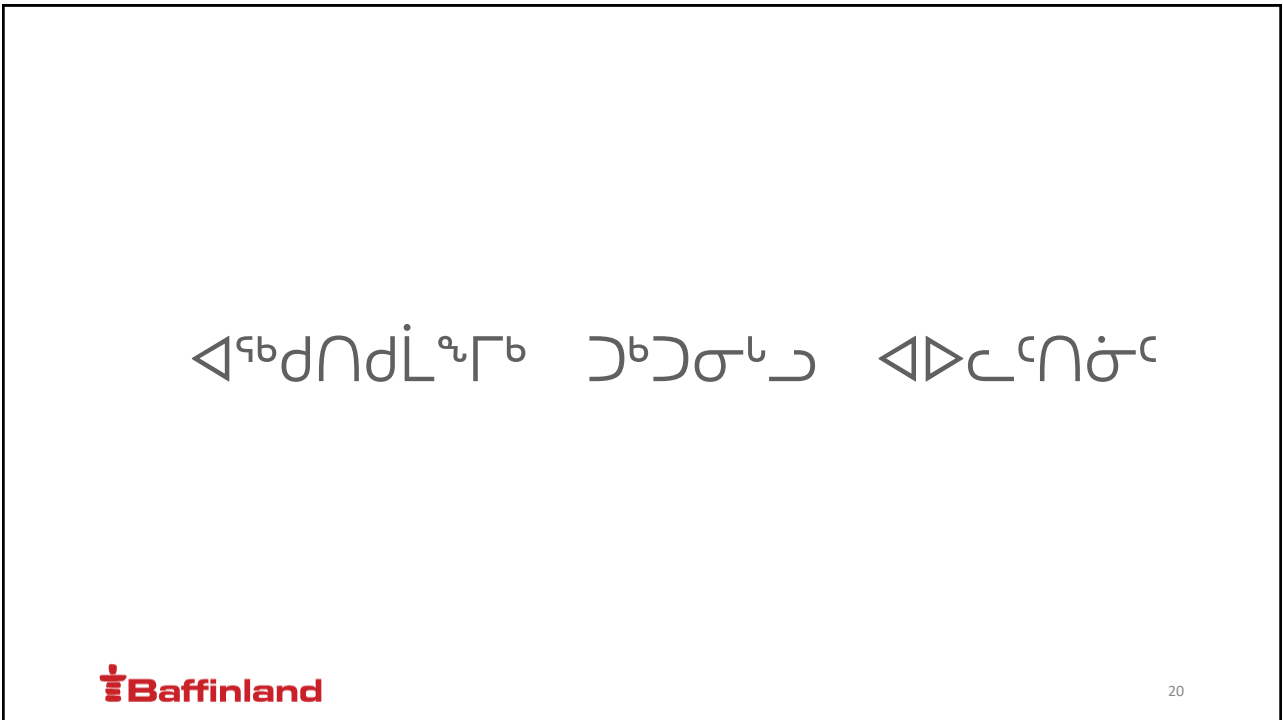


18

18



ՀՀԸԺԸ ԲԵՆՈՐԻ
 ԺԸԸԸ ԳԸԸԸԸԸԸ
 ԴՅՐԸԸ ԸԸԸԸԸԸԸԸ
 ԳԸԸԸԸԸԸԸԸ



ԳԸԸԸԸԸԸԸԸ ԸԸԸԸԸ ԳԸԸԸԸԸԸԸ

ልብ ያለነት ማረጋገጫና ልማት

- ረጅም ጊዜ ማረጋገጫና ልማት ልብ ያለነት ለጥቅምት 29ጥን 2019
- ሥራዎችን ለማስፈጸም፣ ልማት፣ የዋና መሳሪያዎችን ማስተካከል፣ ለፍጥነት ማረጋገጫና ልማት



21

21

ልብ ያለነት ማረጋገጫና ልማት ለጥቅምት 29ጥን ልማት

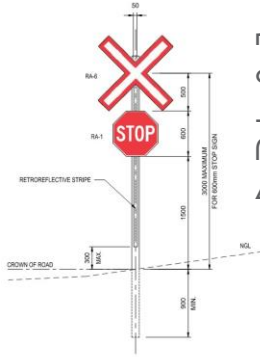
- ልብ ያለነት ለማረጋገጫና ልማት ለጥቅምት 29ጥን ልማት ለጥቅምት 29ጥን ልማት
- ልብ ያለነት ለማረጋገጫና ልማት ለጥቅምት 29ጥን ልማት ለጥቅምት 29ጥን ልማት
- ልብ ያለነት ለማረጋገጫና ልማት ለጥቅምት 29ጥን ልማት ለጥቅምት 29ጥን ልማት



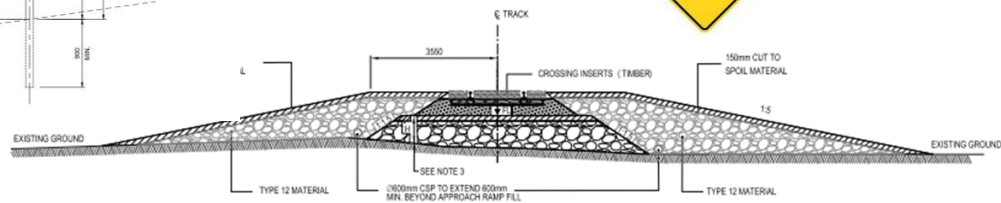
22

22

$\mathcal{D}^b(\mathcal{C})$ ከ $\text{Ext}^1_{\mathcal{C}}(A, B)$ አዲስ ሊፋይን



ሥነ ምግባር ለጥጥር ለጥጥር
 ለጥጥር ለጥጥር ለጥጥር ለጥጥር
 ለጥጥር ለጥጥር ለጥጥር ለጥጥር
 ለጥጥር ለጥጥር ለጥጥር ለጥጥር
 ለጥጥር ለጥጥር ለጥጥር ለጥጥር

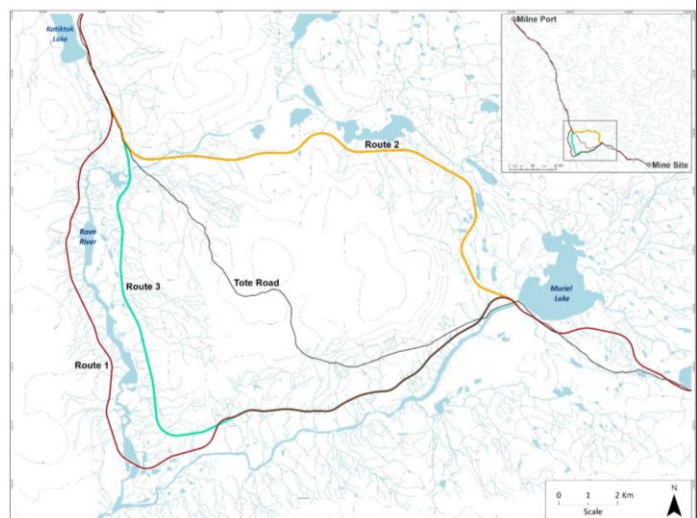


23

23

[illegible]

- ሊኖሩ ላታች
 ዲሴይን ልብ ልብ ወለድ ለሚገኝ ልማት
 ዲጋራ ልማት ለሚገኝ ልማት
 ልማት ለሚገኝ ልማት
 ልማት ለሚገኝ ልማት



24

24



27

27

- $\Delta \Gamma \Delta^c \Delta^c \Delta^c$ $\sigma_{\Delta \Gamma \Delta^c \Delta^c \Delta^c}$
 $\Delta \Gamma \Delta^c \Delta^c \Delta^c \Delta^c$

- [illegible]



28



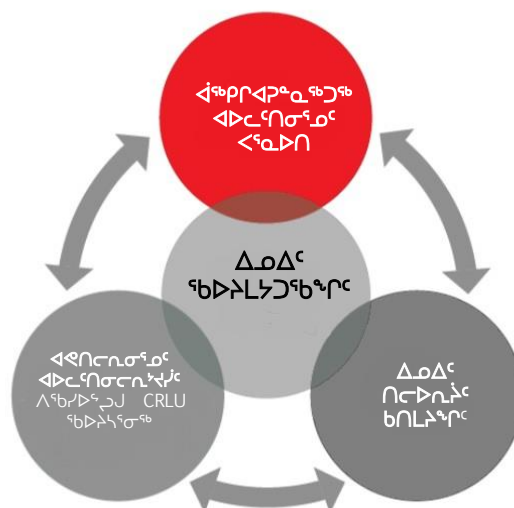
28

QΔQ^{9b} C ΛΔ^{9b}Δ^{9b} C

- **ፈቃደኛ ለጀርባ**
 - **\$1,000,000** ለጋራ ወጪዎች ለፍርድቤት ልዩነት ለመግቢያ ለገቢ ለፍጥነት ለጥራት
- **ፈቃደኛ ለጀርባ**
 - **\$100,000** ለጋራ ወጪዎች ለፍርድቤት
- **ወጪዎች ለፍጥነት ለጥራት**
 - **\$100,000** ለጋራ ወጪዎች ለፍርድቤት

31

$\Delta_{\partial}\Delta^c$ ን፡ $\Delta_{\partial}\Delta^c$
 $< \infty$ ን፡ $\Delta_{\partial}\Delta^c$



32

Δᓄᐃᑦ ᐅᖃᐅᑦᐳᐃᓐᓂᑦ ᖃᑭᖃᓐᓃᑦ

ᐃᑭᑦᐅᑭᐅᑦᐳᑦᐳᑦᐳᑦ

- ᐅᖃᐅᑦᐳᑦᐳᑦᐳᑦᐳᑦᐳᑦ ᐱᑦᐳᑦᐳᑦᐳᑦᐳᑦᐳᑦ ᑭᐳᑦᐳᑦᐳᑦᐳᑦᐳᑦᐳᑦ, ᐳᑦᐳᑦ ᐃᑭᑦᐅᑭᐅᑦᐳᑦᐳᑦᐳᑦ ᐳᑦᐳᑦᐳᑦᐳᑦᐳᑦᐳᑦ
- ᐅᖃᐅᑦᐳᑦᐳᑦᐳᑦᐳᑦᐳᑦ ᐳᑦᐳᑦᐳᑦᐳᑦᐳᑦᐳᑦᐳᑦᐳᑦ ᐳᑦᐳᑦᐳᑦᐳᑦᐳᑦᐳᑦᐳᑦ ᐳᑦᐳᑦᐳᑦᐳᑦᐳᑦᐳᑦᐳᑦ
- ᐅᖃᐅᑦᐳᑦᐳᑦᐳᑦᐳᑦᐳᑦ ᐱᑦᐳᑦᐳᑦᐳᑦᐳᑦᐳᑦᐳᑦ ᐳᑦᐳᑦᐳᑦᐳᑦᐳᑦᐳᑦ ᐳᑦᐳᑦᐳᑦᐳᑦᐳᑦᐳᑦᐳᑦ ᐳᑦᐳᑦᐳᑦᐳᑦᐳᑦᐳᑦᐳᑦ

ᐱᑦᐳᑦᐳᑦᐳᑦᐳᑦᐳᑦᐳᑦ

- ᐅᐃᐳᑦ ᐳᑦᐳᑦᐳᑦ ᐳᑦᐳᑦᐳᑦᐳᑦᐳᑦ ᐳᑦᐳᑦᐳᑦ ᐳᑦᐳᑦᐳᑦᐳᑦᐳᑦᐳᑦᐳᑦ ᐳᑦᐳᑦᐳᑦᐳᑦᐳᑦᐳᑦᐳᑦ ᐳᑦᐳᑦᐳᑦᐳᑦᐳᑦᐳᑦᐳᑦ
- ᐳᑦᐳᑦᐳᑦᐳᑦᐳᑦᐳᑦᐳᑦ ᐳᑦᐳᑦᐳᑦᐳᑦᐳᑦᐳᑦᐳᑦ ᐳᑦᐳᑦᐳᑦᐳᑦᐳᑦᐳᑦᐳᑦ ᐳᑦᐳᑦᐳᑦᐳᑦᐳᑦᐳᑦᐳᑦ



35

35



36

ፔፕሊፕፕ ለፍጥነት ማሻሻያ

- [illegible]



37

37

QΔQ^{9b}PL^{9c} ▷^{9b}▷PL^{9c}▷σ^{9c}

- [illegible]



38

38

