



$\Delta^{\alpha}\Gamma^{\beta}\subset\Gamma\Delta^{\beta}\subset\Delta^{\alpha}L\sigma^{\alpha}\cup 2$

የህጋዊ ምርመራና ምርመራ ምርመራ - ልማት ምርመራ ምርመራ 2019

▷⁹б▷⁷▷σ◁⁹б]◁▷d◁

- [illegible]



ማገገፍገፍ ስራዎች - ለግብርና ስራዎች

- ስራዎችን ለማገገፍ በገጽ ስራዎች ማገገፍ
- ማገገፍ ስራዎች ለገጽ ስራዎች ማገገፍ
- ማገገፍ ስራዎች ለገጽ ስራዎች ማገገፍ
- ማገገፍ ስራዎች ለገጽ ስራዎች ማገገፍ
- ማገገፍ ስራዎች ለገጽ ስራዎች ማገገፍ
- ማገገፍ ስራዎች ለገጽ ስራዎች ማገገፍ
- ማገገፍ ስራዎች ለገጽ ስራዎች ማገገፍ

ለግብርና ስራዎች 2 ለግብርና ስራዎች



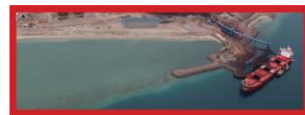
Mine Site
 ስራዎች

ስራዎች ስራዎች ስራዎች
 ስራዎች ስራዎች ስራዎች



Rail/Road Corridor
 ስራዎች

ስራዎች ስራዎች ስራዎች
 ስራዎች ስራዎች ስራዎች
 ስራዎች ስራዎች ስራዎች



Milne Port
 ስራዎች

ስራዎች ስራዎች ስራዎች
 ስራዎች ስራዎች ስራዎች

ስራዎች ስራዎች ስራዎች
 ስራዎች ስራዎች ስራዎች

- ስራዎች ስራዎች ስራዎች
- ስራዎች ስራዎች ስራዎች
- ስራዎች ስራዎች ስራዎች

- ስራዎች ስራዎች ስራዎች
- ስራዎች ስራዎች ስራዎች

- ለድረ-ገጽ ጥያቄዎች ምሳሌዎች
- ለፋይናንስ ምሳሌዎች
- ለፋይናንስ ምሳሌዎች
- ለፋይናንስ ምሳሌዎች



7

 $\dot{\gamma}$

ለጥራት ልዩ ድጋፍና ልዩ ልማት
ፍጥነት ከሌሎች ልዩነት

- $\rho^b c^a \dot{a}^b \dot{c}^a \dot{c}^b \dot{c}^c$
- $\Lambda c^b \dot{a}^b \dot{c}^b - \dot{a}^b \dot{a}^c \dot{c}^c$
- $\dot{c}^b \dot{c}^c \dot{c}^a \dot{c}^b \dot{c}^c \dot{c}^a \dot{c}^b \dot{c}^c \dot{c}^a \dot{c}^b \dot{c}^c$

- $\Delta \wedge^{\text{qb}} \Gamma^{\text{bc}} C^{\text{c}} \sigma^{\text{b}} d^{\text{c}}, \Delta \text{c} \sigma \Delta \Gamma^{\text{a}} \dot{\Delta}^{\text{c}}$
 $\text{bNL} \sigma^{\text{b}} d^{\text{c}}, \text{NL} \Gamma^{\text{qb}} \Gamma^{\text{L}} \Gamma^{\text{J}} \triangleright \sigma^{\text{b}} \text{b}^{\text{c}} \triangleright^{\text{c}} \sigma^{\text{b}} d^{\text{c}},$
 $\triangleright^{\text{qb}} \text{b} \Gamma^{\text{a}} \sigma^{\text{b}} d^{\text{c}}$

- ΔL^C ዲፕሪኬሽን ምክንያት የሚፈጠር የሲግኔል ምሽግ

- $\mathcal{D}^b(\mathcal{D}^{\infty} \sigma^{\infty} \sigma^b) \subseteq \mathcal{D}^{\infty} \mathcal{C} \mathcal{P} \mathcal{N}^{\infty}$
- $\mathcal{A}^{\infty} \mathcal{A}^{\infty} \mathcal{A}^{\infty} \mathcal{D}^{\infty} \mathcal{C}^{\infty} \mathcal{A}^{\infty} \mathcal{D}^{\infty} \mathcal{A}^{\infty}$
- $\mathcal{A} \mathcal{P}^{\infty} \mathcal{D}^{\infty} \sigma^{\infty} \mathcal{B}^{\infty} \mathcal{A}^{\infty} \mathcal{A}^{\infty}$
- $\mathcal{A} \mathcal{C} \mathcal{D}^{\infty} \mathcal{A}^{\infty} \mathcal{D}^{\infty} \mathcal{A}^{\infty} \mathcal{A}^{\infty}$



8

ልዎልፍ ንጉሰሙኒ



ልዎልፍ ለጥንታዊ ስራ 2007



‘ኔኔከብዕ’ ልዎልፍ ለጥንታዊ ስራ 2008



ፖሊሲና ልዎልፍ ለጥንታዊ ስራ 2008



ፖሊሲና ለጥንታዊ ስራ 2015



ፖሊሲና ለጥንታዊ ስራ 2019



11

ልዎልፍ ንጉሰሙኒ ስራ

ልዎልፍ ስራ

ልዎልፍ ስራ ለጥንታዊ ስራ

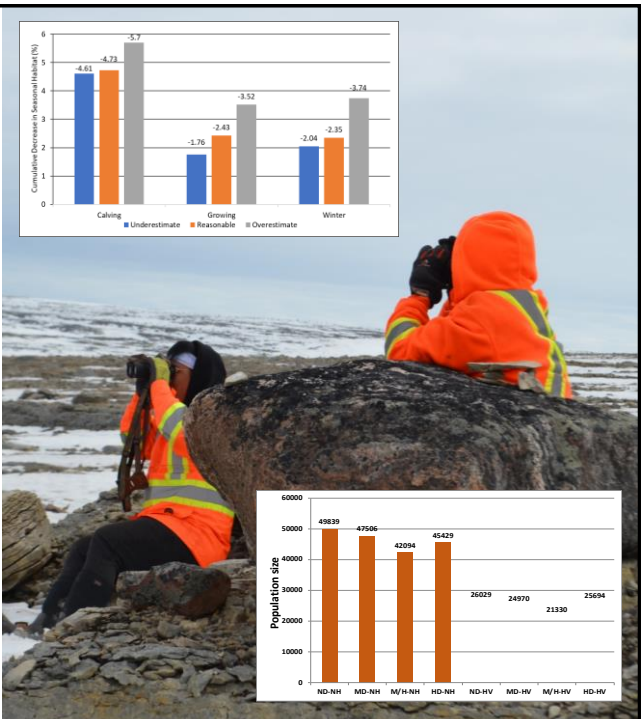
ልዎልፍ ስራ ለጥንታዊ ስራ

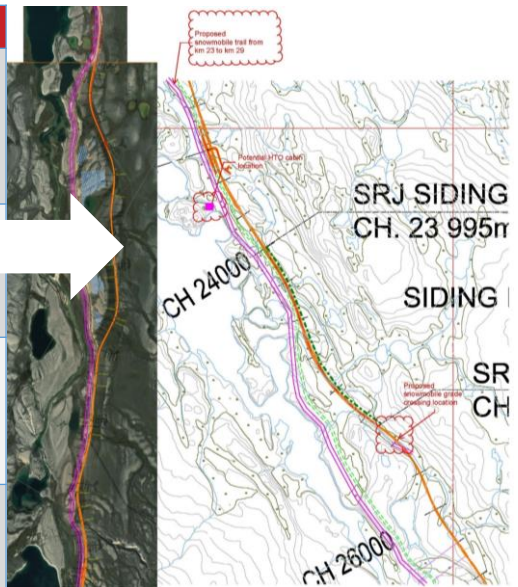
- ልዎልፍ ስራ ለጥንታዊ ስራ
- ልዎልፍ ስራ ለጥንታዊ ስራ
- ልዎልፍ ስራ ለጥንታዊ ስራ

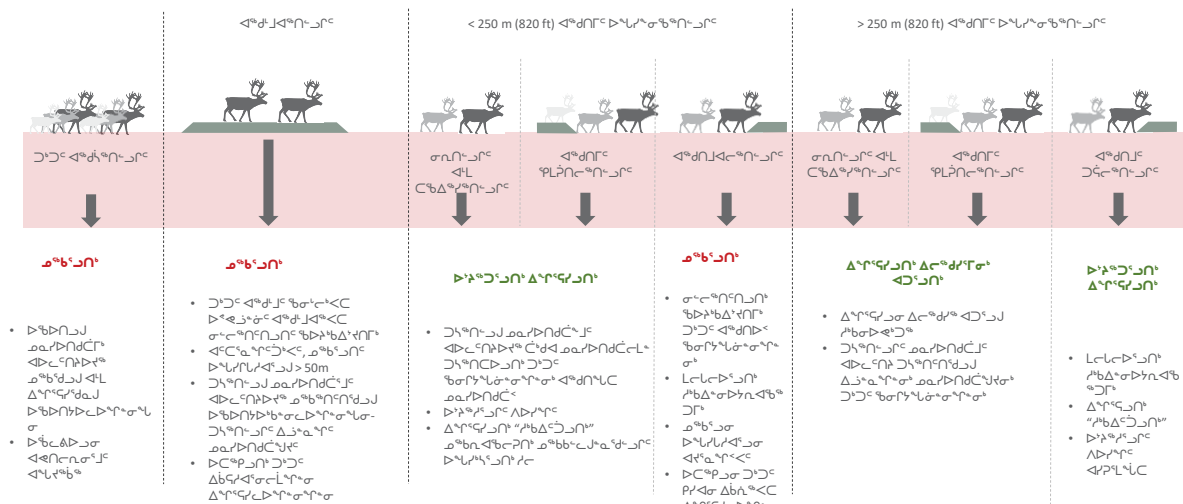
ልዎልፍ ስራ ለጥንታዊ ስራ

ልዎልፍ ስራ ለጥንታዊ ስራ

ልዎልፍ ስራ ለጥንታዊ ስራ



[illegible]

[illegible]

$\Lambda_{\text{CMB}} \ll \Lambda_{\text{QCD}} \ll \Lambda_{\text{GUT}} \ll \Lambda_{\text{Planck}}$
 $\Delta_{\text{CMB}} \ll \Delta_{\text{QCD}} \ll \Delta_{\text{GUT}} \ll \Delta_{\text{Planck}}$

ካቢናት

- [illegible]

◀▶↺↻

- [illegible]



ሚኒስቴር/ባለሙያዎች ለጥራት ልኪክ ማጥናት/ጥናት ለጥራት

ሚኒስቴር/ባለሙያዎች ለጥራት ልኪክ ለጥራት
 (TSD-28, ስልክ ሀ)

ለምሳሌ

- ማረጋገጫ ማረጋገጫ
- ካሊፍኦርኒያ
- ለጥራት ልኪክ ለጥራት

ጥራት

- ጥራት ለጥራት ለጥራት ለጥራት
- ለጥራት ለጥራት ለጥራት ለጥራት
- ለጥራት ለጥራት ለጥራት ለጥራት

ጥራት

- ለጥራት ለጥራት ለጥራት ለጥራት
- ለጥራት ለጥራት ለጥራት ለጥራት
- ለጥራት ለጥራት ለጥራት ለጥራት

ሚኒስቴር/ባለሙያዎች ለጥራት ልኪክ

ለጥራት ልኪክ ለጥራት ልኪክ ለጥራት ልኪክ



ለጥራት ልኪክ ለጥራት ልኪክ





23

$\triangleleft^{\text{a}} \Gamma \Gamma \triangleleft^{\text{b}} C \triangleright \sigma^{\text{a}} \text{L} \text{m}^{\text{c}} 2$

[illegible]

AP^{6b}C

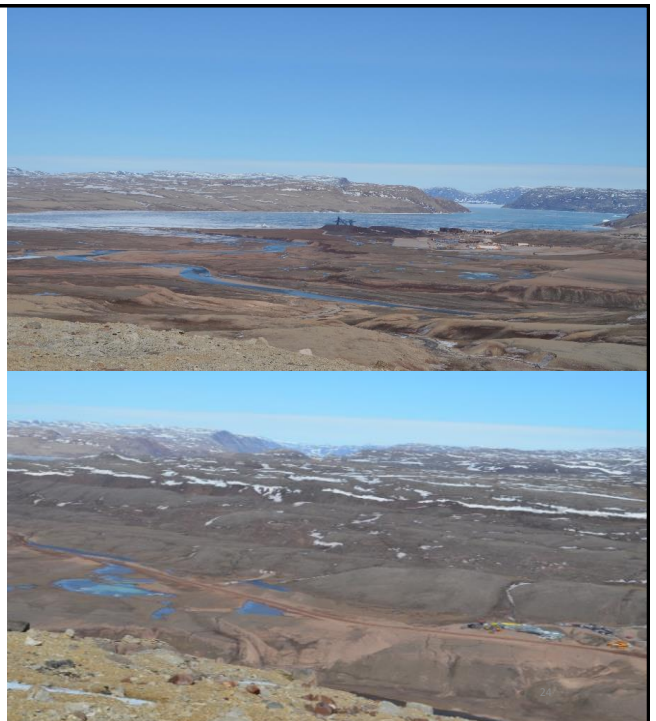
- [illegible]

σ^εν^c

- $\sigma^a \sigma^b \sigma^c \sigma^d \sigma^e \sigma^f \sigma^g \sigma^h \sigma^i \sigma^j \sigma^k \sigma^l \sigma^m \sigma^n \sigma^o \sigma^p \sigma^q \sigma^r \sigma^s \sigma^t \sigma^u \sigma^v \sigma^w \sigma^x \sigma^y \sigma^z$
- $\sigma^a \sigma^b \sigma^c \sigma^d \sigma^e \sigma^f \sigma^g \sigma^h \sigma^i \sigma^j \sigma^k \sigma^l \sigma^m \sigma^n \sigma^o \sigma^p \sigma^q \sigma^r \sigma^s \sigma^t \sigma^u \sigma^v \sigma^w \sigma^x \sigma^y \sigma^z$
- $\sigma^a \sigma^b \sigma^c \sigma^d \sigma^e \sigma^f \sigma^g \sigma^h \sigma^i \sigma^j \sigma^k \sigma^l \sigma^m \sigma^n \sigma^o \sigma^p \sigma^q \sigma^r \sigma^s \sigma^t \sigma^u \sigma^v \sigma^w \sigma^x \sigma^y \sigma^z$

0274C

- $\Delta^c \prec \Gamma^c \Delta^c \cap \Gamma^c \Delta^c \prec \Gamma^c \Delta^c \prec \Gamma^c \Delta^c$



24

$\mathcal{M} \models \sigma^b$ $\mathcal{M} \models \neg \sigma^b$

[illegible]

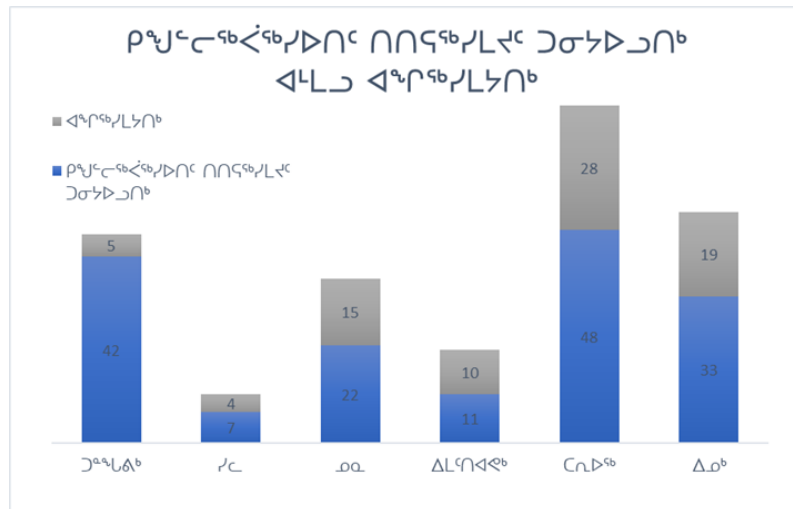
27

27

[illegible]

28

የኢትዮጵያ ፌዴራላዊ ዲሞክራሲያዊ ሪፐብሊክ



σ₂Δ^{6b}ρσ^{6b} Δ^bΔ^bσ^c - Δ^{6b}ρΔ^{6b}σ^{6b}

- [illegible]



Questions?
ᐱᐱᐅᐅᐅᐅᐅᐅ?