



[illegible]

- [illegible]



3

3

ፍፅረኛ ሆኖ ለፍጥነት ምክንያት - ለፍጥነት ፍፅረኛ

[illegible]

- $\Delta \sigma^b \supset \Delta \sigma^b \rho^c \supset \text{በ} \triangleleft \text{በ} \supset \triangleleft^b \supset \sigma^b \supset \sigma^b \supset \sigma^b$   
 $\rho^c \supset \sigma^b \supset \sigma^b \supset \sigma^b \supset \sigma^b \supset \sigma^b \supset \sigma^b$
- $\supset \rho^c \supset \sigma^b \supset \sigma^b \supset \sigma^b \supset \sigma^b \supset \sigma^b \supset \sigma^b$   
 $\supset \sigma^b \supset \sigma^b \supset \sigma^b \supset \sigma^b \supset \sigma^b \supset \sigma^b$

ለፍጥነትና ለፍጥነት ምክንያት ለፍጥነት ምክንያት ለፍጥነት ምክንያት  
 ለፍጥነት ምክንያት ለፍጥነት ምክንያት ለፍጥነት ምክንያት ለፍጥነት ምክንያት  
 ለፍጥነት ምክንያት ለፍጥነት ምክንያት ለፍጥነት ምክንያት ለፍጥነት ምክንያት  
 ለፍጥነት ምክንያት ለፍጥነት ምክንያት ለፍጥነት ምክንያት ለፍጥነት ምክንያት

- $\triangleleft \triangleright$  ምዕራባዊና ምዕረብ አገልግሎት የሚሰጡ ናቸው።  
 $\triangleleft \triangleright$  ምዕራባዊና ምዕረብ አገልግሎት የሚሰጡ ናቸው።  
ርዕስ ስም ማሳሰቢያ



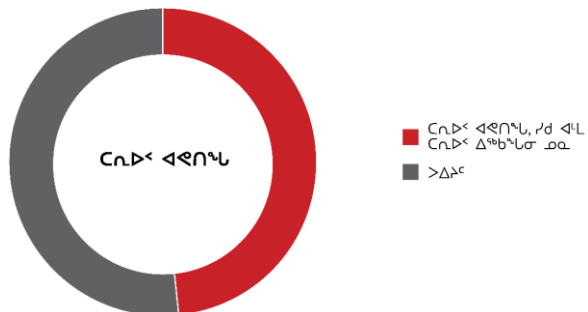
4





$\sigma^a \sigma^c = i\epsilon^{abc} \sigma^b$

- [illegible]

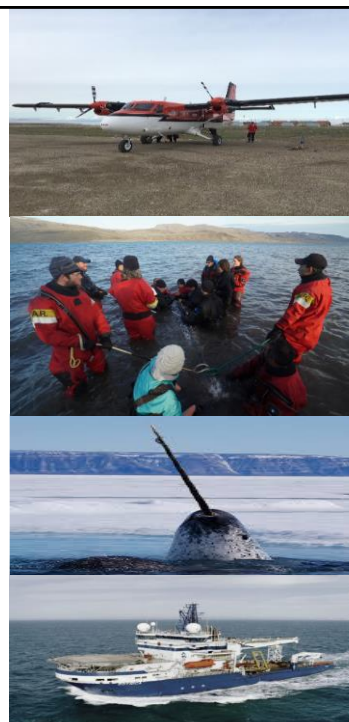


5

7

**፪፻፳፰ ዓ.ም ጋረጽ - ሰነድ**

- [illegible]



8



[illegible]

[illegible]

- [illegible]



11

11



**ᐱᕈᑦ ᓴᔭᒃ-ᓵᓂᓄᓂ**

12

$\langle \otimes^{\omega} \dot{\iota}^{\omega} d^{\omega} \wedge c n_{\sigma^{\omega}} l^{\omega} p^{\omega} C \Delta c L n^{\omega} n_{\sigma^{\omega}} j^{\omega}$

- [illegible]



13

13

$$P^{\text{qb}} C \Delta_C L \cap^C \cap \sigma^{\text{qb}} - \Delta L^{\text{q}} \triangleright C \sigma^b$$

- [illegible]

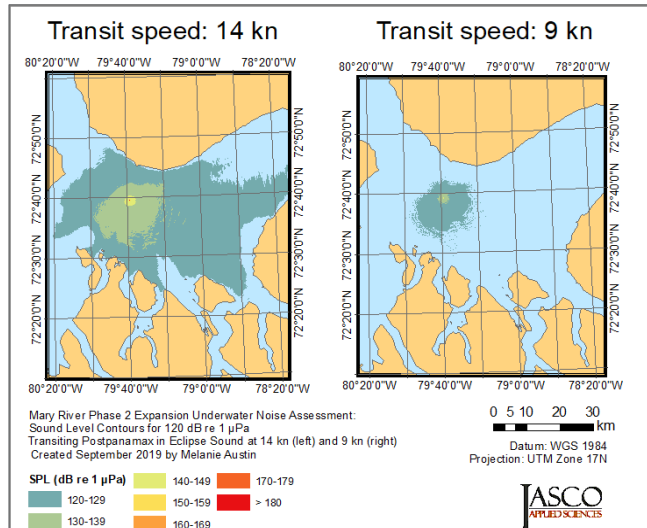


14

14

▷ ၂၈၆ နှစ် ငြိမ်းချမ်းရေး - ▷ ၂၈၆ နှစ် ငြိမ်းချမ်းရေး

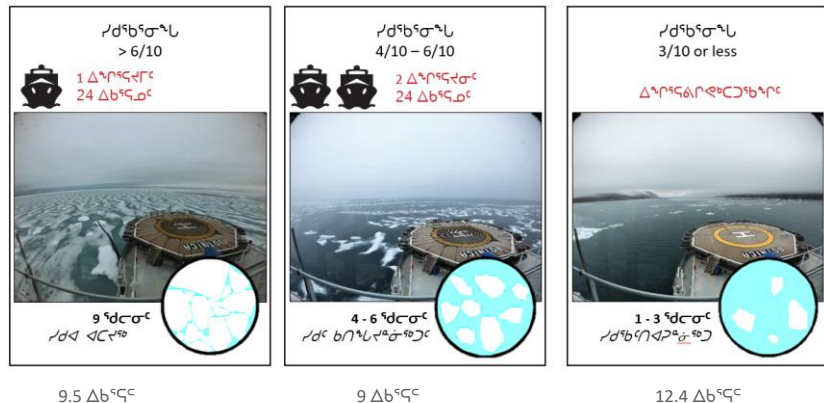
- [illegible]



15

▷  $\Delta_{\sigma^b} C \Delta_{\sigma^b} L \cap C \cap \sigma^b - \rho \sigma^b \rho \nabla C \cap L \cap \sigma^b$

▷Γ◁⁹ℝ◁ᶜ ◁▷ℂ▷σ⁹Γᶜ / ϑ⁹σ⁹ℋΓᶜ▷Γᶜ



ལྷན་འཛུགས་ཀྱི་འཕྲིན་ལྟར་ན།

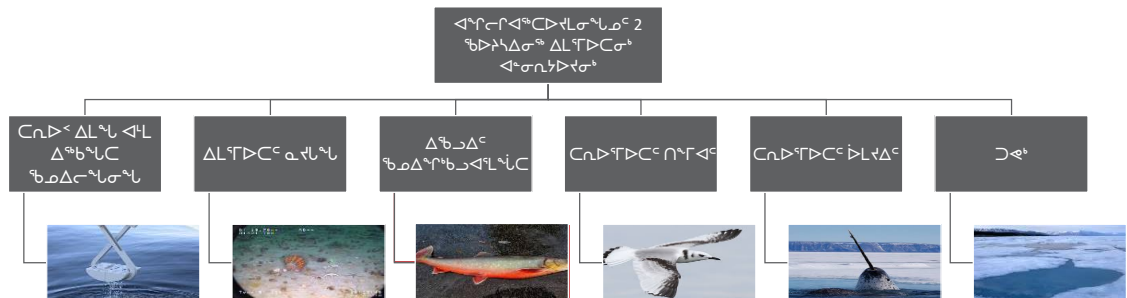


16

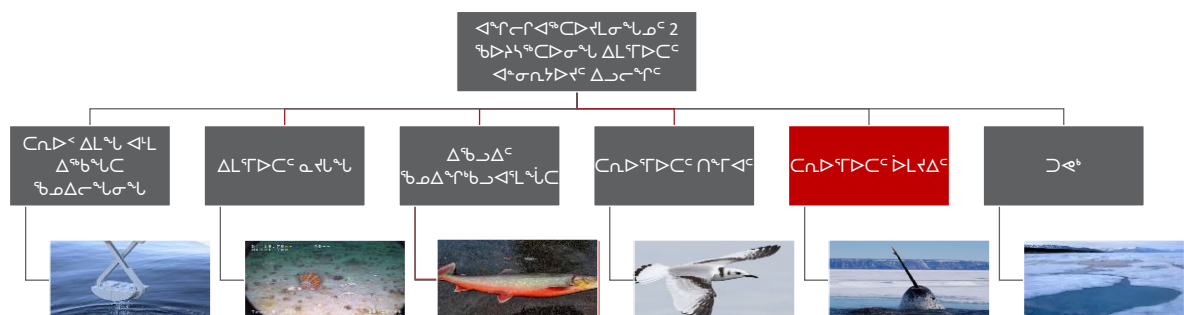




## ᐱᓄᓂᓴᓂᐅᐳᐳᐳᐳ ᐱᓄᓂᓴᓂᐅᐳᐳᐳ ᐅᓴᐳᐳ



## ᐱᓄᓂᓴᓂᐅᐳᐳᐳ ᐱᓄᓂᓴᓂᐅᐳᐳᐳ ᐅᓴᐳᐳ





**ᐃᓄᓂᒪᑭᔨᕐ ᐃᒫᖅᑦᑲᑦ - ᑯᑯᑭᑦᑲᑦᑐᖅᑦ ᑋᑱᑦᑳᑦ ᐊᑦᑦᑭᐊᑦ ᑉᐊᒪᑦᑎᑦᑭᑦᑯᑦ**



23

23

$$\triangle^a \sigma_{\alpha\beta} \gamma^{\alpha} \gamma^{\beta} \Delta L^{\alpha} \gamma^{\alpha} C^{\alpha} - a^{\alpha} \eta^{\alpha}$$

- ዲሞክራሲያዊ ልማት ለሀገራችን ለማሳደግ ማስፈረም አለብን።
- ልማት ማሳደግ ለሀገራችን ለማሳደግ ማስፈረም አለብን።
- ልማት ማሳደግ ለሀገራችን ለማሳደግ ማስፈረም አለብን።
  - ልማት ማሳደግ ለሀገራችን ለማሳደግ ማስፈረም አለብን።
  - ልማት ማሳደግ ለሀገራችን ለማሳደግ ማስፈረም አለብን።
- ዲሞክራሲያዊ ልማት ለሀገራችን ለማሳደግ ማስፈረም አለብን።
- ልማት ማሳደግ ለሀገራችን ለማሳደግ ማስፈረም አለብን።

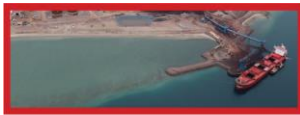


24

24



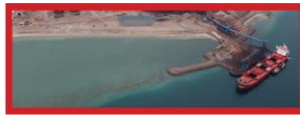
ᐱᓐᓂᓐᓂᓐᓂᓐᓂᓐ 2 ᐱᓐᓂᓐᓂᓐᓂᓐᓂᓐ



**Milne Port**  
ᓂᓐᓂᓐᓂᓐᓂᓐᓂᓐ

ᐱᓐᓂᓐᓂᓐᓂᓐᓂᓐᓂᓐ

- ᓂᓐᓂᓐᓂᓐᓂᓐᓂᓐᓂᓐ
- ᐱᓐᓂᓐᓂᓐᓂᓐᓂᓐᓂᓐᓂᓐ
- ᐱᓐᓂᓐᓂᓐᓂᓐᓂᓐᓂᓐᓂᓐ



**Milne Port**  
ᓂᓐᓂᓐᓂᓐᓂᓐᓂᓐ

ᐱᓐᓂᓐᓂᓐᓂᓐᓂᓐᓂᓐ

- ᐱᓐᓂᓐᓂᓐᓂᓐᓂᓐᓂᓐᓂᓐ
- ᐱᓐᓂᓐᓂᓐᓂᓐᓂᓐᓂᓐᓂᓐ
- ᐱᓐᓂᓐᓂᓐᓂᓐᓂᓐᓂᓐᓂᓐ



**Shipping**  
ᐱᓐᓂᓐᓂᓐᓂᓐᓂᓐᓂᓐ

- ᐱᓐᓂᓐᓂᓐᓂᓐᓂᓐᓂᓐᓂᓐ
- ᐱᓐᓂᓐᓂᓐᓂᓐᓂᓐᓂᓐᓂᓐ
- ᐱᓐᓂᓐᓂᓐᓂᓐᓂᓐᓂᓐᓂᓐ

- ᓂᓐᓂᓐᓂᓐᓂᓐᓂᓐᓂᓐᓂᓐ
- ᐱᓐᓂᓐᓂᓐᓂᓐᓂᓐᓂᓐᓂᓐ

- ᓂᓐᓂᓐᓂᓐᓂᓐᓂᓐᓂᓐᓂᓐ
- ᐱᓐᓂᓐᓂᓐᓂᓐᓂᓐᓂᓐᓂᓐ
- ᐱᓐᓂᓐᓂᓐᓂᓐᓂᓐᓂᓐᓂᓐ

- ᐱᓐᓂᓐᓂᓐᓂᓐᓂᓐᓂᓐᓂᓐ
- ᓂᓐᓂᓐᓂᓐᓂᓐᓂᓐᓂᓐᓂᓐ
- ᐱᓐᓂᓐᓂᓐᓂᓐᓂᓐᓂᓐᓂᓐ



ᓂᓐᓂᓐᓂᓐᓂᓐᓂᓐᓂᓐ



[illegible]

29

[illegible][illegible]

$L^b$ ;  
1 milliliter  $\triangleright \triangleleft \text{ج}^\circ \text{ع}^\circ 1 \times 10^{-6} \text{ m}^3$

340 litres  $\triangleright$   $\triangleleft$  0.34 m<sup>3</sup>

$\Delta^{\circ} \text{J mol}^{-1}$ ;  
0.2 litres  $\triangleright^{\circ} \text{L}^{\circ} \text{m}^3 \text{ } 0.0002 \text{ m}^3$



ልዩ የፍትሕ ፍርድ ቤት  
 የፍትሕ ፍርድ ቤት ልዩ የፍትሕ ፍርድ ቤት  
 የፍትሕ ፍርድ ቤት ልዩ የፍትሕ ፍርድ ቤት:  
 $0.00002 \times 10^{11} \text{ m}^3$

ፈተናዊነት የክልሉን ጥምር ዕቃ አጠቃላይ ተመርምሮ  
የሚገኝበት (Ragged Island) የዋሽንግተን ከተማው  
የሚገኝበት በሆኑበት)  
 $5 \times 10^{11} \text{ m}^3$

$\Delta V_{\text{LH}} \approx \Delta T_{\text{LH}} \Delta C_p$

$\Delta T_{\text{LH}} = 0.003 \times 10^{11} \text{ m}^3$



30











## ኤጳጠራሚ

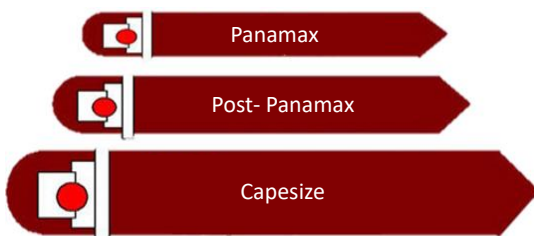
- ልጋራ
- ለራሲክ ኤጳጠራሚ
- ለኃላፊነት ልጋራ ኤጳጠራሚ ለገላ ኤጳጠራሚ
- ለጋራነት
- ለጋራነት ለጋራነት
- ኤጳጠራሚ



37

37

## ጋራነት ልጋራነት



ጋራነት ልጋራነት Crystal Serenity  
ጋራነት ልጋራነት



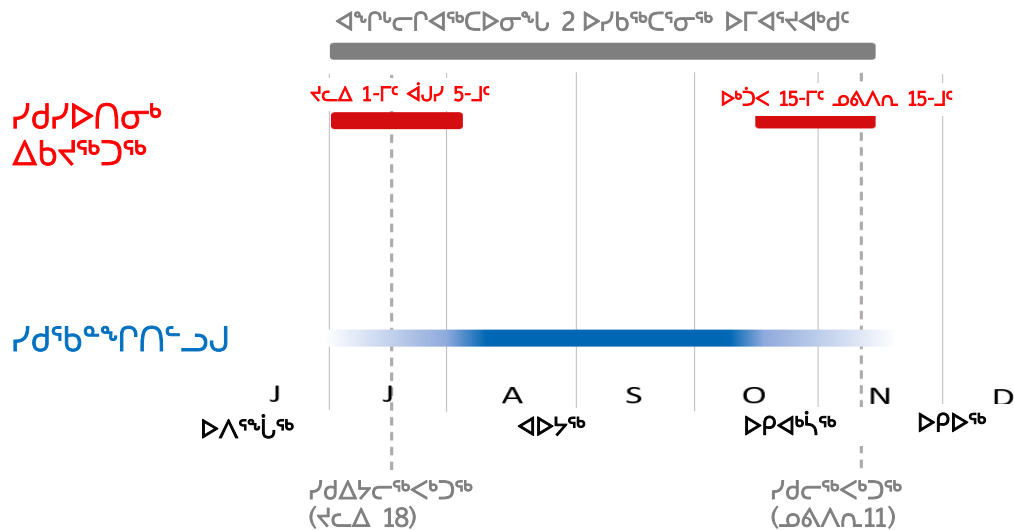
38



38



ᐅᐱᐱᐣᐱᐣ ᐱᐱᐱᐣᐱᐣ ᐱᐱᐱᐣᐱᐣ - ᐅᐱᐱᐣᐱᐣ ᐅᐱᐱᐣᐱᐣ

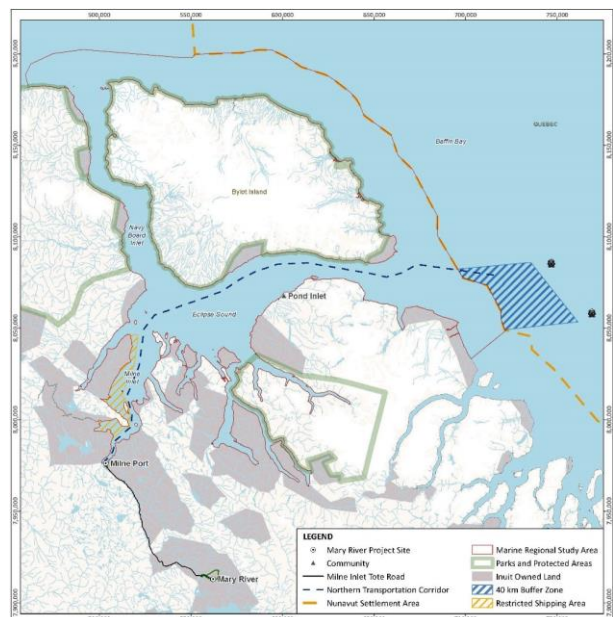


39

39

[illegible]

- [illegible]



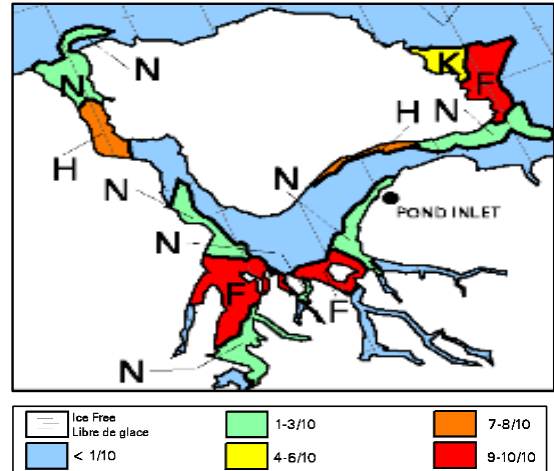
40

40



## ᐅᑦᐱᑦᐱᑦ ᐅᑦᑭᑦᑭᑦᑭᑦ ᑭᑭᐱᑦᑭᑦᑭᑦ

- ᐱᑦᐱᑦᐱᑦ ᐅᑦᐱᑦᐱᑦ Botnica  
ᐅᑦᑭᑦᑭᑦᑭᑦ ᐱᑦᐱ 19, 2019



**Baffinland**

41

41

## ᐅᑦᐱᑦᐱᑦ ᐅᑦᑭᑦᑭᑦᑭᑦ ᑭᑭᐱᑦᑭᑦᑭᑦ - ᐅᑭᑭᑦᑭᑦ ᐅᑦᐱᑦᐱᑦ

ᐅᑦᐱᑦᐱᑦ (ᐱᑦᐱᑦᐱᑦᐱᑦᐱᑦ 2- ᑦ)	ᐱᑦᐱ	ᐱᑦᐱ	ᐱᑦᐱ	ᐱᑦᐱ	ᐱᑦᐱᑦ
ᐱᑦᐱᑦᐱᑦ ᐅᑦᑭᑦᑭᑦᑭᑦ	22	62	60	32	176
ᐱᑦᐱᑦᐱᑦ ᐱᑦᐱᑦᐱᑦ	12	6	6	8	32
ᐱᑦᐱᑦᐱᑦ	34	68	66	40	208
ᐱᑦᐱᑦᐱᑦ/ᐱᑦᐱᑦᐱᑦ ᐱᑦᐱᑦᐱᑦ	2.3	2.2	2.2	1.3	1.7

**Baffinland**

42

42

$\triangleright \gamma^b \zeta^b C^{\zeta^b} D^C \wedge c n \sigma^a L^C \zeta^b m \Delta c^a l \sigma \triangleleft - \triangleright \Gamma \triangleleft \zeta^d \triangleleft^c \rho^b b \sigma^a \rho^c$

- 9 knot- $\sigma^b$   $\rho^b \Delta^a \sigma^c \eta \Delta^c \eta^b \supset \Delta^a \eta^a \eta^c \wedge \eta^c \supset \Delta^c \eta^c \eta^c$   
 $\subset \Delta^a \sigma^c \eta^b \Delta^a \Delta^c \eta^c$

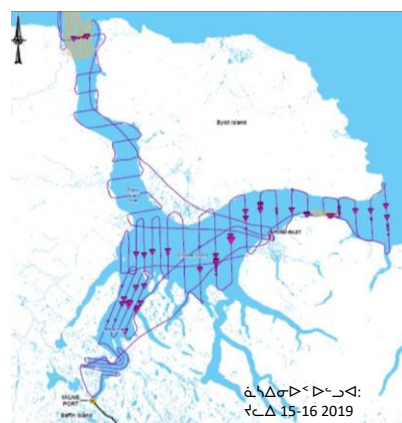
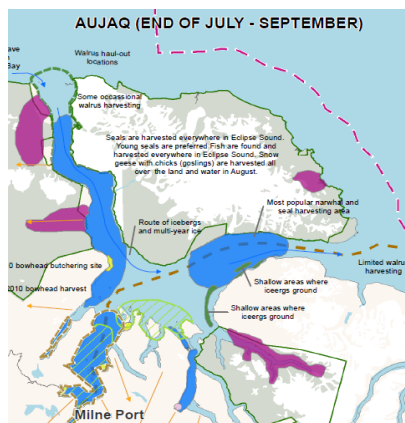
[illegible]

43

43

$\triangleright \Gamma \triangleleft^a \triangleleft^b \delta^c \triangleright \rho^a \rho^b \mathbb{C}^a \sigma^a - \wedge^c \triangleright \triangleleft \mathbb{C} \triangleright \sigma^a \rho^c \Delta \delta \Delta^c \rho^b \triangleright \mathbb{L} \sigma^a \rho^c$   
 $\triangleleft^d \mathbb{L} \rho^b \triangleright \rho^d \Delta \sigma^a \Gamma^c \rho^b \triangleright \rho^d \triangleright^c$

- [illegible]



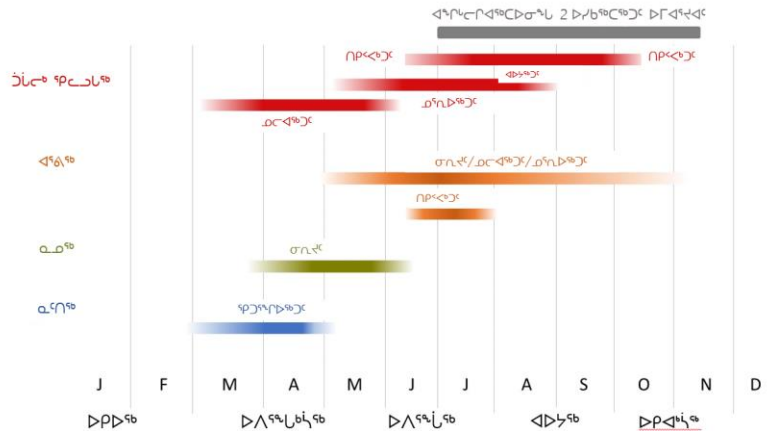
44

44

[illegible]

ኢሮኦ ሞረጋገጥ

- [illegible]



45

45

[illegible]

- [illegible]

የጭነት መጠን	Bruce Head የጥንቃቄ ልዩነት (ብርሃን)				
	2014	2015	2016	2017*	2019
ፋርግላንት የጭነት ርዕሰ ክፍል (ከጥንቃቄ #)	10,463	14,599	28,309	11,862	14,690
ለጥንቃቄ ርዕሰ ክፍል የፋርግላንት ልዩነት (ክፍል) የጥንቃቄ ርዕሰ ክፍል	0 (የጥንቃቄ)	13	38	56	81

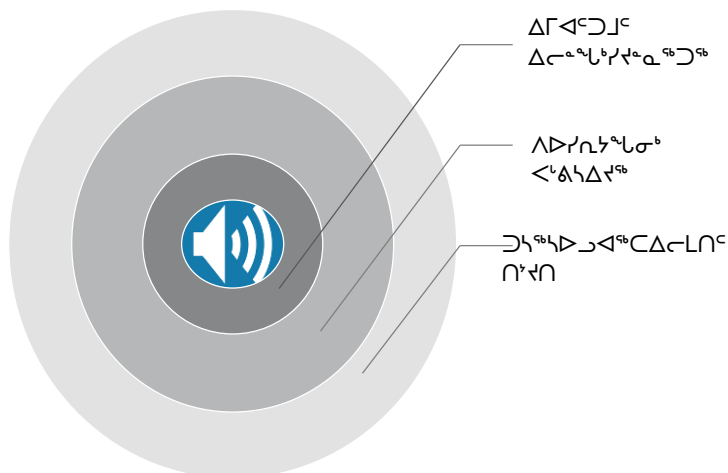
[illegible]

46

46





$\Delta^b \triangleright \Delta^{f_a} q^c \sigma^a \bar{L} \Delta \Gamma \triangleleft^c \triangleright^c \Delta L^c \Gamma \triangleright C_m^c > \Delta f_m^c$ 

49

49

[illegible]

- [illegible]

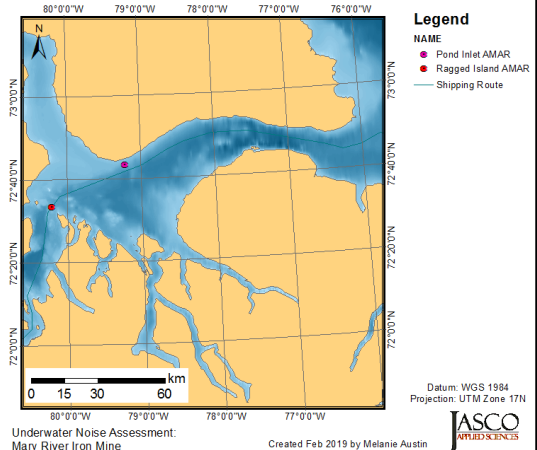


50

50

## ᐅᑦᐱᑦᐱᑦ ᐅᑦᑭᑦᐱᑦᐱᑦᐱᑦ - ᑭᑦᐱᑦ ᐱᑦᐱᑦᐱᑦᐱᑦᐱᑦ ᐱᑦᐱᑦᐱᑦᐱᑦ

- ᐅᑭᐱᑦᐱᑦ ᐱᑦᐱᑦᐱᑦᐱᑦᐱᑦ ᐱᑦᐱᑦᐱᑦᐱᑦᐱᑦ ᐱᑦᐱᑦᐱᑦᐱᑦᐱᑦ ᐱᑦᐱᑦᐱᑦᐱᑦᐱᑦ
- ᑦᐱᑦᐱᑦᐱᑦ ᐱᑦᐱᑦᐱᑦᐱᑦᐱᑦ, ᐱᑦᐱᑦᐱᑦᐱᑦᐱᑦᐱᑦ, ᐱᑦᐱᑦᐱᑦᐱᑦᐱᑦ ᐱᑦᐱᑦᐱᑦᐱᑦᐱᑦ ᐱᑦᐱᑦᐱᑦᐱᑦᐱᑦ
- ᐱᑦᐱᑦᐱᑦᐱᑦᐱᑦ ᐱᑦᐱᑦᐱᑦᐱᑦᐱᑦ ᐱᑦᐱᑦᐱᑦᐱᑦᐱᑦ (2019-ᐱᑦᐱᑦᐱᑦ) ᐱᑦᐱᑦᐱᑦᐱᑦᐱᑦᐱᑦ ᐱᑦᐱᑦᐱᑦᐱᑦᐱᑦ ᐱᑦᐱᑦᐱᑦᐱᑦᐱᑦ ᐱᑦᐱᑦᐱᑦᐱᑦᐱᑦ ᐱᑦᐱᑦᐱᑦᐱᑦᐱᑦ
- ᐱᑦᐱᑦᐱᑦᐱᑦᐱᑦ ᐱᑦᐱᑦᐱᑦᐱᑦᐱᑦ ᐱᑦᐱᑦᐱᑦᐱᑦᐱᑦ ᐱᑦᐱᑦᐱᑦᐱᑦᐱᑦ (2019-ᐱᑦᐱᑦᐱᑦ) ᐱᑦᐱᑦᐱᑦᐱᑦᐱᑦᐱᑦ ᐱᑦᐱᑦᐱᑦᐱᑦᐱᑦ ᐱᑦᐱᑦᐱᑦᐱᑦᐱᑦ ᐱᑦᐱᑦᐱᑦᐱᑦᐱᑦ



51

51

## ᐅᑦᐱᑦᐱᑦ ᐅᑦᑭᑦᐱᑦᐱᑦᐱᑦ - ᑭᑦᐱᑦ ᐱᑦᐱᑦᐱᑦᐱᑦᐱᑦ (ᐱᑦᐱᑦᐱᑦ)

- ᐱᑦᐱᑦᐱᑦᐱᑦᐱᑦᐱᑦᐱᑦᐱᑦᐱᑦ ᐱᑦᐱᑦᐱᑦᐱᑦᐱᑦᐱᑦᐱᑦ ᐱᑦᐱᑦᐱᑦᐱᑦᐱᑦᐱᑦᐱᑦ (ᐱᑦᐱᑦᐱᑦᐱᑦᐱᑦᐱᑦ ᐱᑦᐱᑦᐱᑦᐱᑦᐱᑦᐱᑦᐱᑦ ᐱᑦᐱᑦᐱᑦᐱᑦᐱᑦᐱᑦᐱᑦ)
- ᐱᑦᐱᑦᐱᑦᐱᑦᐱᑦᐱᑦᐱᑦ ᐱᑦᐱᑦᐱᑦᐱᑦᐱᑦᐱᑦᐱᑦ
- ᐱᑦᐱᑦᐱᑦᐱᑦᐱᑦᐱᑦᐱᑦ ᐱᑦᐱᑦᐱᑦᐱᑦᐱᑦᐱᑦᐱᑦ ᐱᑦᐱᑦᐱᑦᐱᑦᐱᑦᐱᑦᐱᑦ ᐱᑦᐱᑦᐱᑦᐱᑦᐱᑦᐱᑦᐱᑦ
- ᐱᑦᐱᑦᐱᑦᐱᑦᐱᑦᐱᑦᐱᑦᐱᑦ ᐱᑦᐱᑦᐱᑦᐱᑦᐱᑦᐱᑦᐱᑦ ᐱᑦᐱᑦᐱᑦᐱᑦᐱᑦᐱᑦᐱᑦ ᐱᑦᐱᑦᐱᑦᐱᑦᐱᑦᐱᑦᐱᑦ

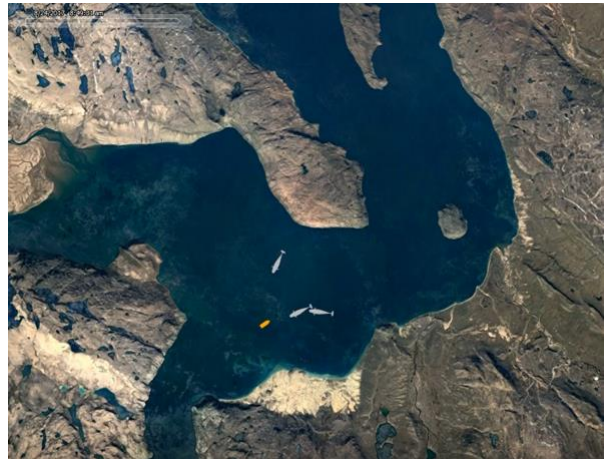


52

52

## ᐅᑦᐱᑦᐱᑦ ᐅᑦᑲᑦᑕᑦᑕᑦᑕᑦ - ᑦᑕᑕᑦ ᐱᑦᑕᑦᑕᑦ ᐱᑦᑕᑦᑕᑦᑕᑦᑕᑦ ᐱᑦᑕᑦᑕᑦ

- ᐱᑦᑕᑦᑕᑦᑕᑦᑕᑦᑕᑦ  
ᑕᑦᑕᑦᑕᑦᑕᑦᑕᑦᑕᑦ ᑕᑦᑕᑦᑕᑦᑕᑦᑕᑦ  
ᑦᑕᑕᑦᑕᑦ ᐱᑦᑕᑦᑕᑦᑕᑦᑕᑦ  
ᐅᑦᐱᑦᐱᑦ ᐅᑦᑲᑦᑕᑦᑕᑦᑕᑦ  
ᐱᑦᑕᑦᑕᑦ

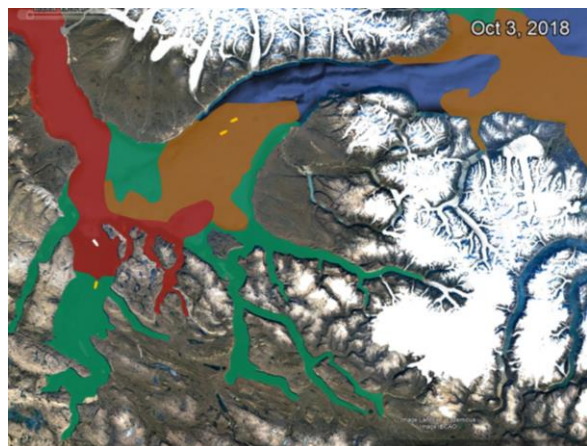


53

53

## ᐅᑦᐱᑦᐱᑦ ᐅᑦᑲᑦᑕᑦᑕᑦᑕᑦ - ᐱᑦᑕᑦᑕᑦᑕᑦᑕᑦ ᐱᑦᑕᑦᑕᑦ

- ᐱᑦᑕᑦᑕᑦᑕᑦᑕᑦᑕᑦ ᑕᑦᑕᑦᑕᑦᑕᑦᑕᑦᑕᑦ  
ᑕᑦᑕᑦᑕᑦᑕᑦᑕᑦᑕᑦ ᑦᑕᑕᑦᑕᑦ  
ᐱᑦᑕᑦᑕᑦᑕᑦᑕᑦᑕᑦ  
ᐅᑦᐱᑦᐱᑦ ᐅᑦᑲᑦᑕᑦᑕᑦᑕᑦ  
ᑦᑕᑦᑕᑦ



54

54





[illegible]

- [illegible]



57

57

**▷Γ◁<sup>ς</sup>ℝ◁<sup>c</sup> ▷ℓ<sup>ς</sup>b<sup>ς</sup>C<sup>ς</sup>Π<sup>c</sup>▷ℓ<sup>c</sup> - ◁▷<sup>c</sup>Π<sup>ς</sup>ℓΔσ<sup>ς</sup>**

- [illegible]



58

58

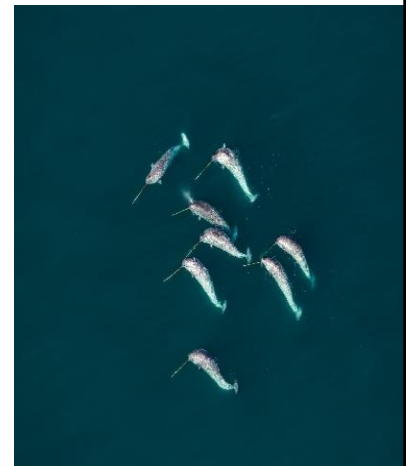
## ዴፕሪኬሽን: ልማት ልዩነቶች

- 71 ድርጅት (710 ልዩነቶች) ልማት ልዩነቶች
- 590 ድርጅት (~5900 ልዩነቶች) ልዩነቶች
- ከ18-ኛው ድርጅት (ለሰው ልዩነቶች ምርመራ) 2019-ኛው ድርጅት 14-ኛው ድርጅት ልዩነቶች
- የድርጅት ልዩነቶች ልማት ልዩነቶች ልዩነቶች
- ለሰው ልዩነቶች ልማት ልዩነቶች ልዩነቶች
- ለሰው ልዩነቶች ልማት ልዩነቶች ልዩነቶች
- ለሰው ልዩነቶች ልማት ልዩነቶች ልዩነቶች
- ለሰው ልዩነቶች ልማት ልዩነቶች ልዩነቶች



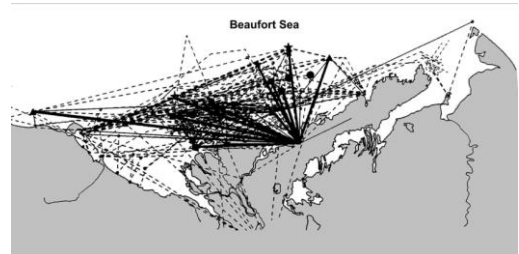
## የድርጅት ልዩነቶች - ልዩነቶች ልዩነቶች

- ለድርጅት ልዩነቶች ልማት ልዩነቶች ልዩነቶች
- ለድርጅት ልዩነቶች ልማት ልዩነቶች ልዩነቶች



ᐃᓯᔭᓂ ᐃᓴᑦᕈᐅᐅᓪᓴᐅ ᐅᓄᑦᓂᓚᓴᓂᓂ ᐃᓴᓇᐅᑦᕈᐅᐅᓪᓴᐅ ᐅᓯᖃᖃᐅᓂᓴᓂ

- ከባርፍታር Beaufort Sea ልብረት ምርጥ ርከታ ሲሆን
  - ምዕራባዊ ምዕራባዊ ልብረት ምርጥ ርከታ ሲሆን
  - ልብረት ምርጥ ርከታ ምርጥ ርከታ ሲሆን
  - ከባርፍታር ልብረት ምርጥ ርከታ ሲሆን
    - 5 ልብረት ምርጥ ርከታ ሲሆን
    - 71 ልብረት ምርጥ ርከታ ሲሆን
    - 8 ልብረት ምርጥ ርከታ ሲሆን
    - 5 ልብረት ምርጥ ርከታ ሲሆን
    - 11 ልብረት ምርጥ ርከታ ሲሆን
    - 200 ልብረት ምርጥ ርከታ ሲሆን
- ልብረት ምርጥ ርከታ ሲሆን

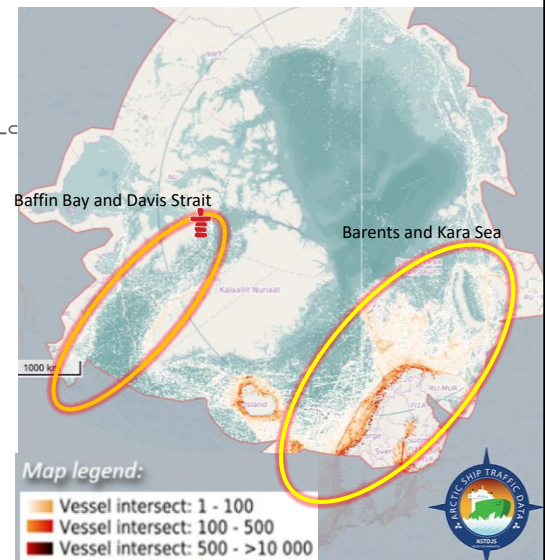


61

61

[illegible]

- [illegible]



(Protection of the Arctic Marine Environmental Working Group

62





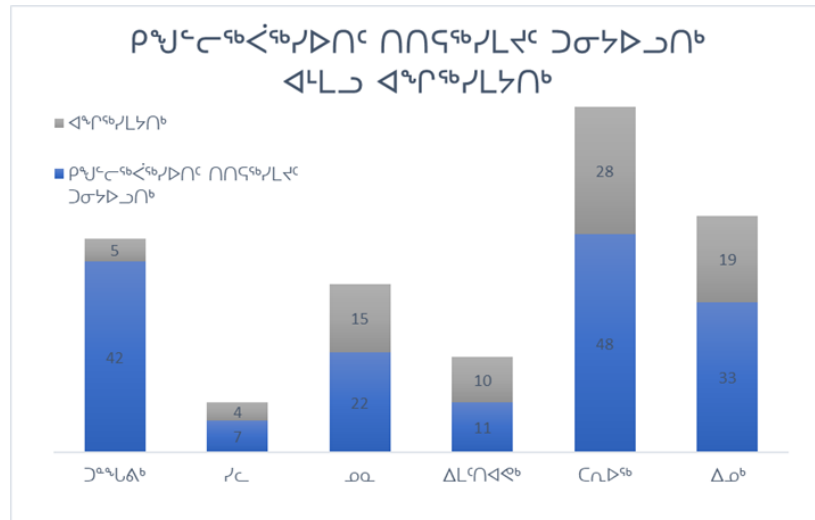






ፍጥረትና ፍጥረት

የኢትዮጵያ ፌዴራላዊ ዲሞክራሲያዊ ሪፐብሊክ ጠቅላይ ሚኒስትር ገብረ ሙሉ



ፖርብርፍ ርገሊኛ ስጋናጥሰ - ልዩፖርብርፍ

- [illegible]



$\langle D^{\text{sb}} C \rangle J^C \dot{L}^a q \triangleright J^{\text{sb}} \wedge c n \triangleleft J^C \Delta c h n \triangleright' j n^c L c l^a r^c$



፲፭፻፱፻፳፱ ለፍጥነት ለፍጥነት ለፍጥነት ለፍጥነት ለፍጥነት

- [illegible]

