



Committee Bay Project

INAC Commercial Lease: 056J/11-1-2, 056J/12-1-2
INAC Land Use Permit: N2014C0002, N2014C0005
Kitikmeot Inuit Association: Land Use Permit KTL314C003
NIRB Project Reference Number: 07EN021
NWB Licence: 2BE-CRA1520

Annual Report

2019

North Country Gold Corp.
December 2019

1.0 **TABLE OF CONTENTS**

1.0	TABLE OF CONTENTS	1
2.0	DISTRIBUTION.....	3
3.0	BACKGROUND	4
4.0	PROJECT DESCRIPTION	5
4.1	Camps.....	7
4.1.1	Hayes Camp.....	7
4.1.2	Bullion Camp	7
4.1.3	Ingot Camp.....	7
4.1.4	Crater Camp.....	7
4.2	Caches.....	7
4.2.1	Three Bluffs drill area and cache	7
4.2.2	West Plains cache	8
4.3	Three Bluffs gold deposit.....	8
4.4	Regional Prospects	8
5.0	2019 WORK ACTIVITIES.....	10
5.1	Mineral Exploration Activities.....	10
5.1.1	Diamond Core Drilling.....	10
5.1.2	Surface Sampling	13
5.1.3	Induced Polarization Ground Geophysical Survey	14
5.2	Other Work Activities	15
5.3	Camp Usage	17
5.4	Local Hiring	18
5.5	Consultation	19
5.6	Expenditure	19
6.0	LAND USE INSPECTIONS	20
6.1	2019 Inspection.....	20
6.1.1	Follow up to 2018 Water Licence Inspection.....	20
6.2	Progressive Reclamation.....	20
7.0	WATER	21
7.1	Water Use	21
7.2	Water Sampling.....	21
8.0	WILDLIFE	21
9.0	SPILLS.....	22

List of Tables

Table 1: NCGC Permits and Licences	4
Table 2: Camps and caches within the Committee Bay Project	5
Table 3: 2019 Diamond Drilling Activity.....	10
Table 4: Local community Hires by Position and Community - 2019.....	18
Table 5: Domestic Water usage during 2019 field season	21
Table 6: Diamond Drill Water usage during 2019 field season	21
Table 7: Wildlife sightings - 2019	22

List of Figures

Figure 1: Committee Bay Project Overview.....	6
Figure 2: Committee Bay Project Mineral Occurrences.....	9
Figure 3: Diamond Drill in progress at Aiviq – August 2019.....	11
Figure 4: Diamond Drill Site Reclaimed at Aiviq – late August 2019.....	11
Figure 5: 2019 Diamond Drill Hole Locations	12
Figure 6: 2018 Till Sampling Coverage	13
Figure 7: 2019 Induced Polarization Ground Geophysical Survey Lines.	14
Figure 8: Progressive reclamation – Burrow Area 1	15
Figure 9: Progressive reclamation – Three Bluffs Grid Area.....	16
Figure 10: Bullion Camp – August 2019.....	17
Figure 11: NCG Kugaaruk Employees	18
Figure 12: Resident caribou took over as Hayes Camp was closed down for the Summer.	22

List of Appendices

Appendix 1: 2019 Diamond Drill Hole Locations and Dates	AT THE BACK
Appendix 2: 2019 Water Usage Logs.....	AT THE BACK
Appendix 3: 2019 Water Monitoring Results	AT THE BACK
Appendix 4: 2019 Wildlife Observation Logs.....	AT THE BACK

2.0 **DISTRIBUTION**

Organization	Distribution Email
Indigenous and Northern Affairs Canada (INAC)	Aadnc.landsmining.aandc@canada.ca
Environment Canada (EC)	enviroinfo@ec.gc.ca
Government of Nunavut – Department of Environment (GN-DOE)	environment@gov.nu.ca
Kitikmeot Inuit Association (KIA)	landsofficerkia@giniq.com projectofficer@kitia.ca
Nunavut Impact Review Board (NIRB)	info@nirb.ca
Nunavut Water Board (NWB)	licensing@nwb-oen.ca

3.0 **BACKGROUND**

Auryn Resources Inc. ('Auryn') is a Canadian based junior mineral exploration company focused on the acquisition and development of prospective mineral projects in established mining districts globally. North County Gold Corp. (NCGC) is a wholly owned subsidiary of Auryn and is the 100% owner of The Committee Bay Project (CBP). Auryn's management team is highly experienced with an impressive track record of success in discovery and development, including the advancement of two gold projects located in West Africa and Mexico.

Auryn's exploration strategy for the Committee Bay Project is to identify additional deposits within the Committee Bay Belt via regional grassroots exploration and further drill-testing of previously identified gold prospects. Innovative low impact and cost-effective exploration techniques also form a large part of the exploration strategy for the CBP.

The CBP is made up of mineral claims and leases located on Crown Land and surface and sub-surface Inuit Owned Lands (IOLs) which are subject to the Nunavut Land Claims Agreement (NLCA). See Table 1 for NCGC permits and licences for advanced exploration activities on the CBP.

Organization	Description	Permit/Licence #
Nunavut Impact Review Board (NIRB)	Project Reference Number	07EN021
Indigenous and Northern Affairs Canada (INAC)	Land Use Permit (Bullion camp)	N2014C0002
	Land Use Permit (Hayes camp)	N2014C0005
Kitikmeot Inuit Association	Land Use Licence for IOL (Ingot/Crater camps)	KTL314C003
Nunavut Water Board (NWB)	Water Licence	2BE-CRA1520
Indigenous and Northern Affairs Canada (INAC)	Commercial Leases	Lease 056J/11-1-2
		Lease 056J/12-1-2

Table 1: NCGC Permits and Licences

4.0 **PROJECT DESCRIPTION**

A land package of 187 mineral claims and 57 mineral leases currently comprise the CBP. This land package lies within a corridor of greenstone belt originating at Committee Bay continuing for approximately 300 km to the southwest towards Agnico Eagle's Meadowbank Mine, within the Eastern Kitikmeot region of Nunavut Territory. The location and distance to local communities can be seen in Figure 1.

The CBP covers approximately 280,000 hectares and encompasses the Three Bluffs gold deposit, more than five advanced gold targets and several significant gold anomalies. There are four permitted camp sites on the CBP, exploration during 2019 was conducted solely out of Hayes Camp. There are also two fuel and equipment caches across the CBP. Camp and infrastructure locations are presented in Table 2.

Site	UTM Coordinates (NAD 83)			Latitude	Longitude
<i>Name</i>	<i>Zone</i>	<i>Easting (m)</i>	<i>Northing (m)</i>	<i>D°M'S"</i>	<i>D°M'S"</i>
Hayes Camp	15 N	564,613	7,394,173	66°39'30" N	091°32'11" W
Bullion Camp	15 N	494,850	7,363,850	66°23'39" N	093°06'55" W
Ingot Camp*	15 N	516,500	7,386,100	66°35'40" N	092°37'34" W
Crater Camp	16 N	420,290	7,474,040	67°22'19" N	088°51'24" W
Three Bluffs Drill Area	15 N	569,153	7,392,660	66°38'42" N	091°26'12" W
West Plains Cache	15 N	479,650	7,342,810	66°12'19" N	093°27'02" W

Table 2: Camps and caches within the Committee Bay Project

(*Ingot camp has been on care and maintenance for several years with no exploration being conducted from that location).

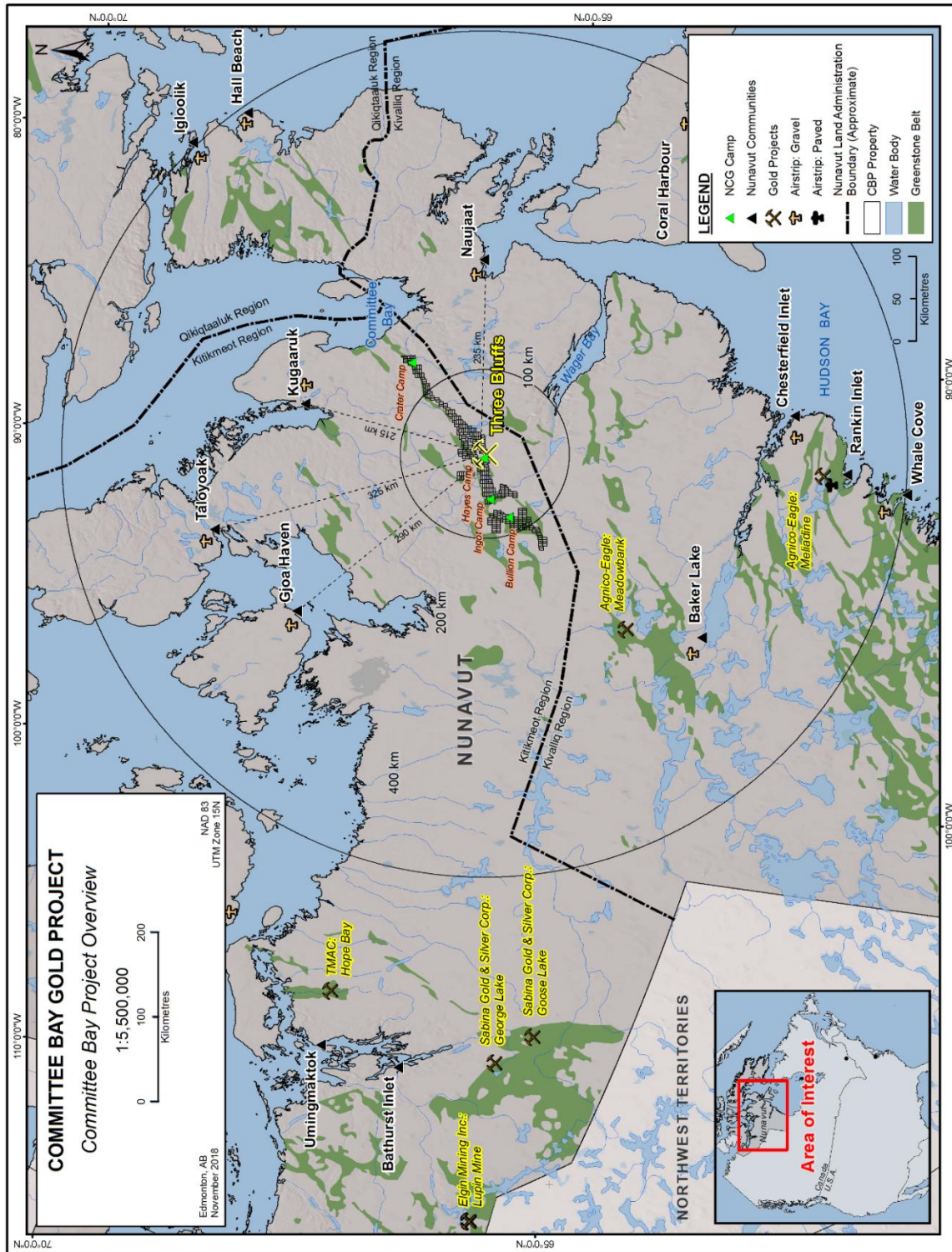


Figure 1: Committee Bay Project Overview

4.1 Camps

4.1.1 Hayes Camp

Hayes Camp is centrally located within the Committee Bay Project, 335 km northeast of Baker Lake, 400 km north of Rankin Inlet and 220 km south of Kugaaruk and provides accommodation for up to 100 people. The camp is supported by a 914 m (3,000') graded esker airstrip and a permitted, seasonally prepared 1,585 m (5,200') winter ice airstrip which is constructed on the adjacent Sandspit Lake. Mobile equipment and earthmoving equipment, power generators, a dual chambered incinerator, fuel and oils are stored at Hayes Camp. There are three permitted quarries near to Hayes camp where no material has been removed from since 2011.

4.1.2 Bullion Camp

Bullion Camp is a small, 20 to 40 person camp used to support seasonal exploration campaigns in the southern portion of the project. This camp is supported by a short 320 m tundra airstrip, a small generator and a small drummed fuel cache.

4.1.3 Ingot Camp

Ingot Camp may accommodate up to 30 people and is used to support seasonal exploration campaigns in the central southern portion of the project. This camp is supported by a 230 m tundra airstrip. A small generator and limited quantities of fuel may be stored at this camp when active.

4.1.4 Crater Camp

Crater Camp is a small, 20 to 40 person camp used to support seasonal exploration campaigns in the northern portion of the project. This camp is supported by a 260 m tundra airstrip, a small generator and a small drummed fuel cache.

4.2 Caches

4.2.1 Three Bluffs drill area and cache

The Three Bluffs drill area and cache is located approximately 5 km east-southeast of Hayes Camp. This area encompasses the Three Bluffs gold deposit and contains three diamond drills and associated equipment along with a small shop and a fuel and consumables cache.

4.2.2 West Plains cache

The West Plains cache has limited materials remaining as they were utilized at various other prospects in recent years. A small supply of core boxes and miscellaneous lumber is all that remains.

4.3 Three Bluffs gold deposit

The Three Bluffs gold deposit is located approximately central to the CBP, 220 km south of Kugaaruk, 235 km west of Repulse Bay and approximately 300 km northeast of Agnico Eagle's Meadowbank Mine.

The Three Bluffs gold deposit mineral resource¹ comprises:

- *An indicated mineral resource of 2.070 Mt at an average grade of 7.85 g/t Au (524,000 oz.)*
- *An inferred mineral resource of 2.930 Mt at an average grade of 7.64 g/t Au (720,000 oz.)*

Three Bluffs occupies a portion of a much larger scale mineralized structure referred to as the Walker Lake Trend. Work to date has outlined high-grade mineralization along the 4 km long Walker Lake Trend with local vertical depths in excess of 500 m.

Auryn strongly believes that continued exploration has excellent potential to increase its mineral resources at Three Bluffs. Future exploration work at the Three Bluffs is expected to continue and may include diamond core drilling.

4.4 Regional Prospects

The CBP encompasses several other high-grade gold targets in addition to the Three Bluffs gold deposit. These prospects include Aiviq, Aarluk, Inuk, Anuri, West Plains, and numerous others (Figure 2). Prospecting, geophysics, rotary air blast (RAB) and diamond drilling have been used along the Committee Bay Greenstone Belt to identify these highly prospective areas.

¹ Please see Technical Report on the Three Bluffs Gold Project, Nunavut, Canada, May 31, 2017 filed on www.sedar.com. Resource estimation was completed in accordance with Canadian Institute of Mining, Metallurgy and Petroleum (CIM) Estimation of Mineral Resource and Mineral Reserve Best Practice Guidelines and is reported in accordance with National Instrument 43-101. Mineral resource reported at 3.0 g/t block cut-off grade for material considered amenable to open pit mining and above 4.0 g/t block cut-off grade for material amenable to underground mining.

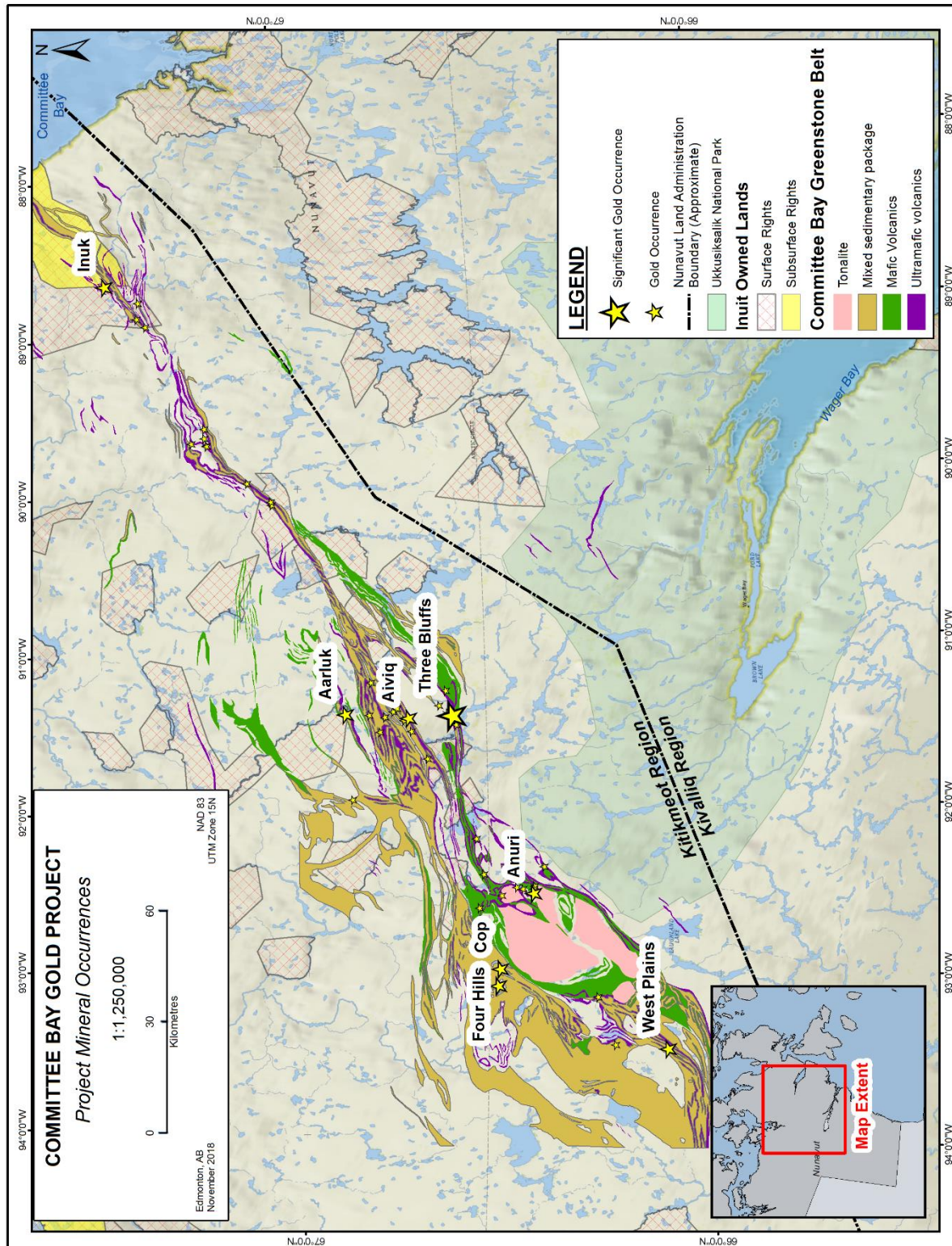


Figure 2: Committee Bay Project Mineral Occurrences

5.0 **2019 WORK ACTIVITIES**

The 2019 exploration program comprised diamond drilling and ground geophysical surveying along with limited geological mapping and surficial sampling. Site maintenance and remediation efforts are a continual aspect of exploration programs at the CBP. Activities occurred on mineral claims and leases on both Crown and Inuit Owned surface lands.

5.1 Mineral Exploration Activities

5.1.1 Diamond Core Drilling

Diamond core drilling was used at the CBP as follow-up to the extensive 2017 and 2018 drill programs. The drilling was concentrated on the extensions to the Aiviq prospect as well as initial drilling at the Shamrock prospect with a total of 7 holes comprising 2708.54 meters (Table 3, Figures 3, 4 and 7).

The 2019 drilling identified a new gold-bearing hydrothermal system and made significant progress in geophysical targeting. At the Shamrock target Auryn intersected **30 meters of 0.67 g/t gold, including 1.5 m of 5.03 g/t gold**, which is characterized by quartz veining within gabbroic rocks. The Shamrock target is located 2.5 kilometers to the southwest of the Aiviq target where the Company drilled **10.5 meters of 1.22 g/t gold** this summer.

The 2019 program also tested our machine learning platform prior to a more expansive drill program. The technology proved to be a useful tool and we believe with further refining it could become increasingly helpful in future targeting.

Prospect	# of Diamond Drill Holes	Total Diamond Drill Metres Drilled
Aiviq	4	1475.62
Shamrock	1	425.81
Kalulik	1	430.07
TB Ext	1	377.04

Table 3: 2019 Diamond Drilling Activity



Figure 3: Diamond Drill in progress at Aiviq – August 2019



Figure 4: Diamond Drill Site Reclaimed at Aiviq – late August 2019

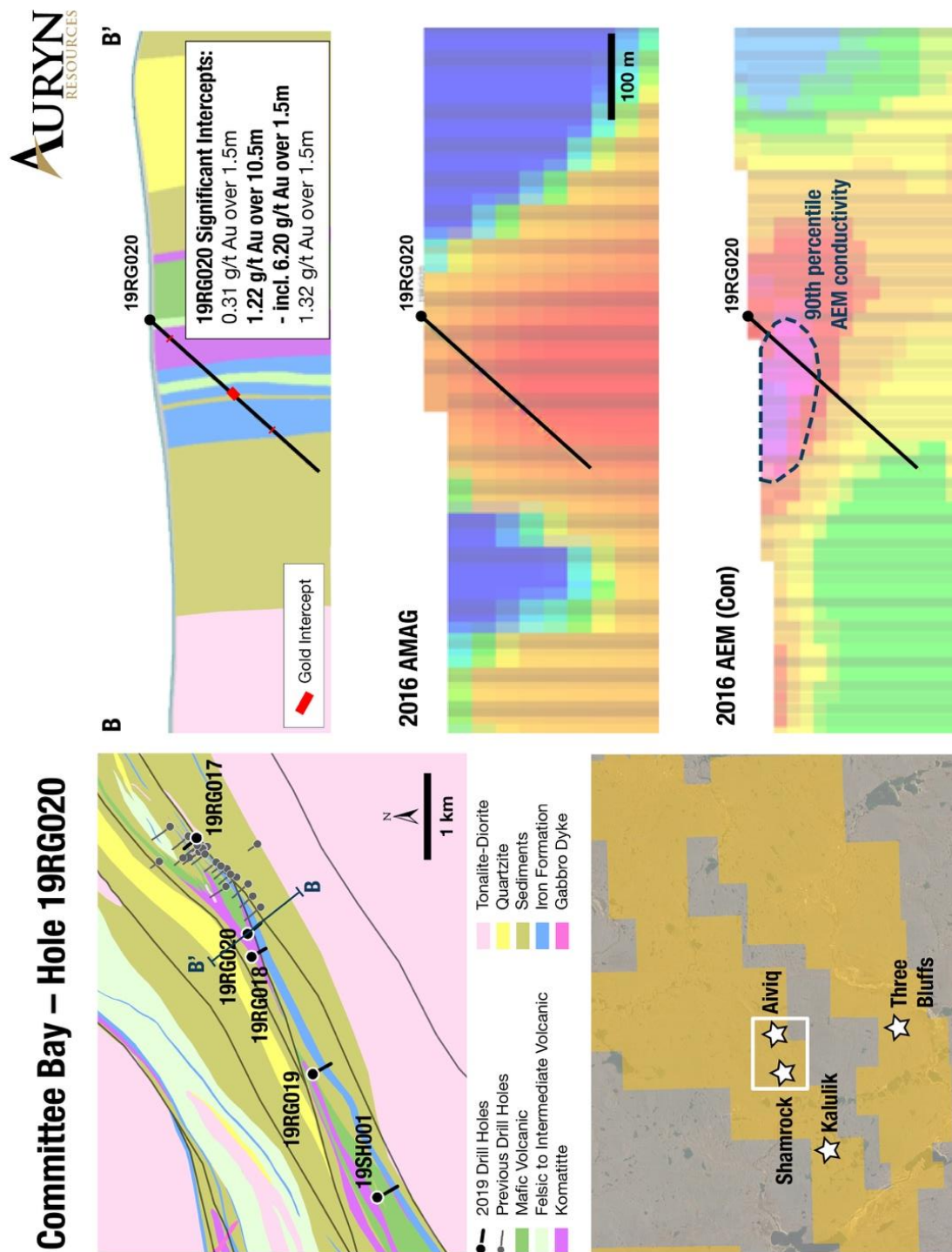


Figure 5: 2019 Diamond Drill Hole Locations

5.1.2 Surface Sampling

Detailed till geochemical sampling was undertaken in order to follow up on previously identified regional till anomalies. The detailed till sampling program comprised 91 samples (Figure 6).

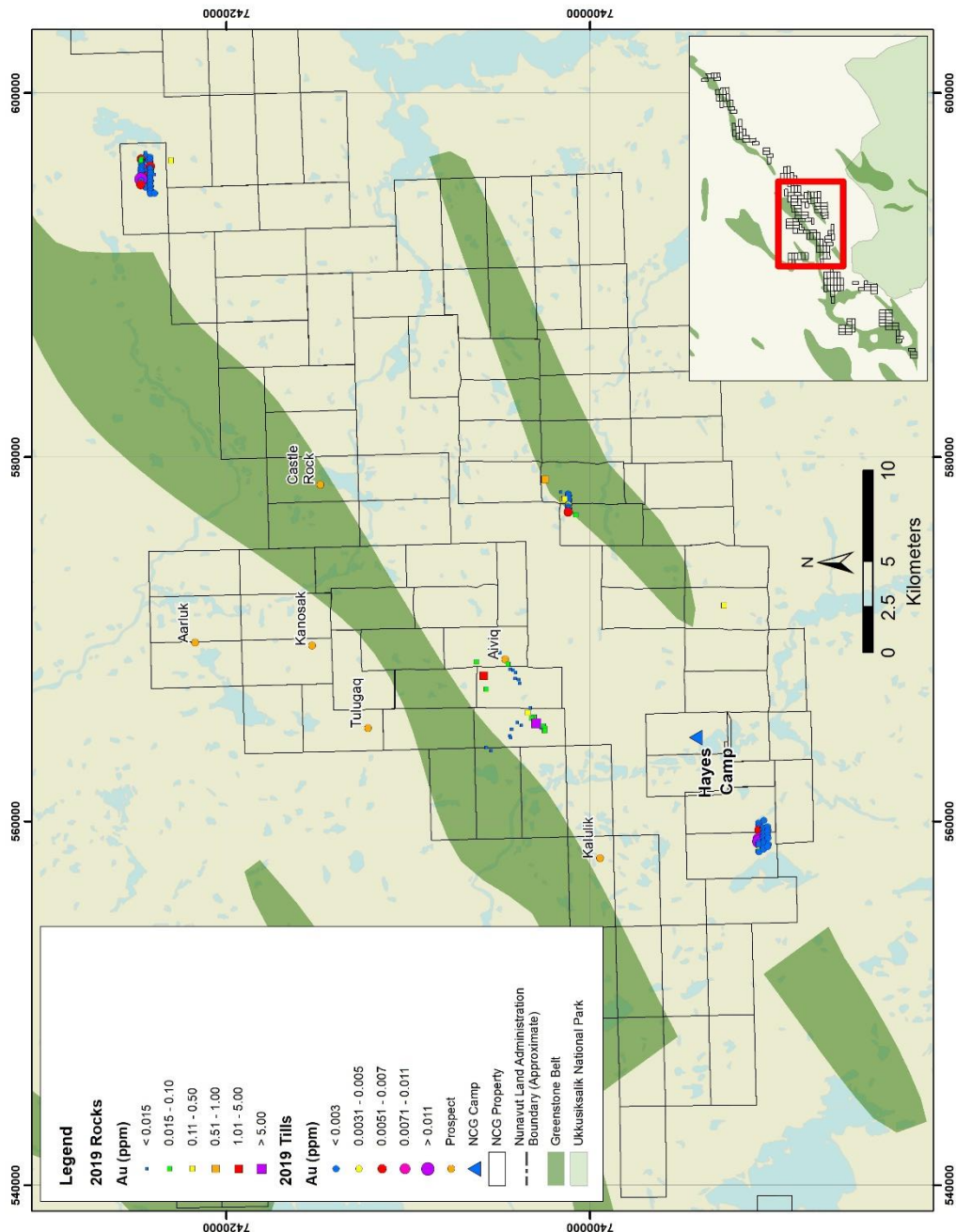


Figure 6: 2018 Till Sampling Coverage

5.1.3 Induced Polarization Ground Geophysical Survey

The location of the 2019 DCIP lines across the Aiviq prospect targeted linear conductors identified from airborne geophysical surveys. The goal was to find zones of higher chargeability values along these conductors, that might indicate high sulphide content with corresponding economic gold mineralization. A total of 26 line-km of DCIP data was collected across 11 lines with a mix of 25m, 50m and 100m dipoles (Figure 7). The 2019 DCIP survey highlighted several anomalous features of interest that assisted drill targeting at during 2019.

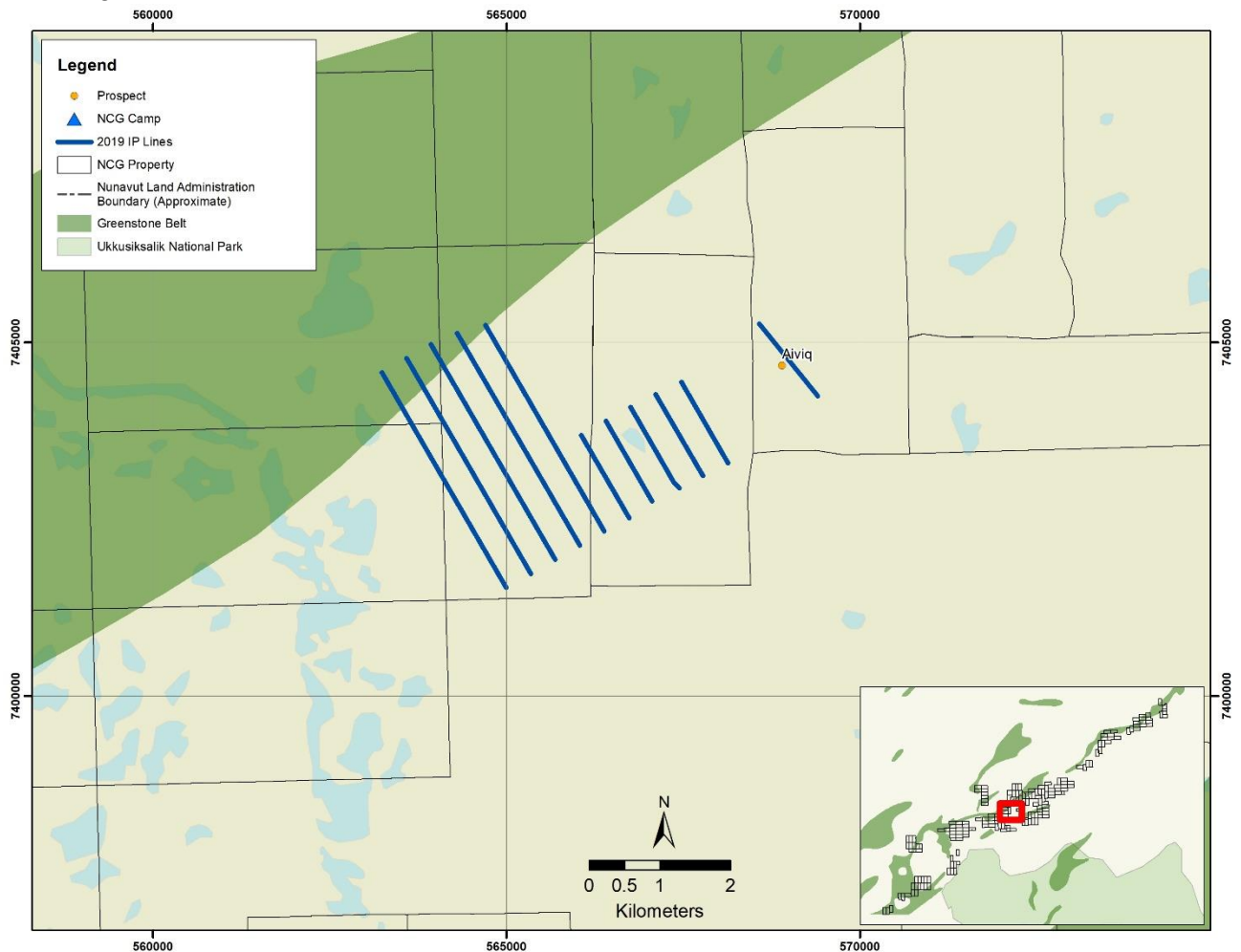


Figure 7: 2019 Induced Polarization Ground Geophysical Survey Lines.

5.2 Other Work Activities

Other work activities comprised non-exploration activities that occurred at the CBP during the 2019 field season and included remediation work and maintenance at Three Bluffs and Hayes Camp.

Waste at site was weighed and organized in preparation for future backhauls. This waste includes scrap metal, waste oils, grease, contaminated materials (fuels, soil, water), used oil, etc. The waste pallets are numbered and their locations are noted for ease of building backhaul loads.

Waste Water Treatment Plant (WWTP)

The WWTP was not used during the 2019 Summer program and was left winterized at the end of Summer 2019. Inspections inside and outside the installation revealed no leaks of the 2017 RV antifreeze.

Hayes Camp

- Inspection and general maintenance of the camp infrastructure and equipment.
- Hazardous waste products were sorted, consolidated and stored in secondary containment within a covered quonset structure ready for back haul.
- Fuel containment was inspected, repaired, covered and secured.
- Limited re-grading of the airstrip was completed in order to maintain optimal drainage and to fill in holes and small ruts that were becoming safety hazards.
- Ongoing reclamation at the Quarry site, Burrow Area 1, just to the north of camp was completed. This included emptying of bulk cutting bags into the depression created by the quarrying activity as well as general site cleanup and monitoring.



Figure 8: Progressive reclamation – Burrow Area 1

- General camp cleanup and maintenance.
- Maintenance on heavy equipment to ensure optimal performance and no leaks.
- Water samples taken and tested.
- Backhaul of empty propane cylinders to Quebec via ship for recertification and refilling.

Three Bluffs Drill Grid

- Fuel cache was inspected and repaired where required.
- Collapsed storage tent was dismantled and removed.



Figure 9: Progressive reclamation – Three Bluffs Grid Area

Bullion Camp

- Inspection of camp and infrastructure was completed (Figure 14).
- Fuel containment berm was inspected.



Figure 10: Bullion Camp – August 2019

5.3 Camp Usage

Exploration activities between July 4th and August 14th were based out of Hayes Camp.

5.4 Local Hiring

Auryn hired a total of 14 local workers from the surrounding community to take part in the 2019 CBP field season (Table 7). The total local payroll expenditure for the program was \$128,284.00 for 352 days of work.

Kugaaruk	Days	Hours	Labour Costs
Assistant Camp Manager Level 1	73	876	\$ 32,032.00
Cook Helper/Cleaner	39	468	\$ 12,792.00
Site Services Level 1	146	1752	\$ 47,424.00
Site Services Level 2	94	1128	\$ 36,036.00
Grand Total	352	4,224	\$ 128,284.00

Table 4: Local community Hires by Position and Community - 2019

NCGC considers its work force of local personnel hired from the nearby communities to be an integral part of the success of its exploration. Local knowledge of the land, climate and environment brought to the team by residents of the region factor heavily into all NCGC's operational decisions.

This year, as in past seasons, local employees were engaged in a number of capacities including camp managers and assistants, equipment operators, incinerator operators, carpenters, mechanics, core cutters, drill pad builders and kitchen helpers. Auryn provides both practical 'on the job' training and certificate-based training for local workers.

The company looks forward to recommencing explorations activities at the CBP in 2019 and to the continued hiring and training of a local workforce.



Figure 11: NCG Kugaaruk Employees

5.5 Consultation

Two NCGC representatives presented at the Kitikmeot Inuit Associations board meeting in Taloyoak in early May 2019. A formal consultation will be completed in 2020 once work plans are finalized.

5.6 Expenditure

Approximately \$860 thousand was expended with northern businesses and the employment of local workers. This accounts for ~43% of the total \$2 million in expenditures during the 2019 field season. Northern businesses involved in the 2019 program included:

- Arctic Buying Company
- Baker Lake Contracting & Supplied Ltd.
- Baker Lake Lodge
- EPLS Home Hardware & Building Centre
- Exploration Tents and Arctic Camp
- Kitikmeot Helicopters
- Kitikmeot BBE Expediting Ltd
- Koomiut Co-op
- Northern Comm. & Nav. Systems
- Nunavut Sealink & Supply Inc.
- Ookpik Aviation Inc.
- Sarliaq Holdings Ltd
- SK Construction Ltd
- Summit Air Ltd.
- The North West Co. Inc.

6.0 LAND USE INSPECTIONS

6.1 2019 Inspection

A land use and water licence inspection was not completed on the CBP during the 2019.

6.1.1 Follow up to 2018 Water Licence Inspection

Observation: 5. The Waste Drum Berm #2 Secondary Containment **MUST** be repaired, send photos to the Inspector once complete to verify this.

Remedial action: Berm #2 was decommissioned during the 2019 field program. Photo below.

Observation: 6. It was mutually agreed that the reclamation of the old Quarry is a Long-Term Reclamation Project, the Proponent will fill in the low spots and channel the drainage to its original location.

Action required: The Proponent is to Update the Progress of this Reclamation in each Annual Report.

2019 Remedial action: Pumping was kept up during Summer (Figure 20) to prevent excessive pooling of water with subsequent damage to the permafrost. The plastic from the damaged rice bags and megabags was sifted out and the material spread in depressions to prevent excessive pooling of rainwater.

6.2 Progressive Reclamation

One of NCGC's primary objectives is to perform exploration programs with minimal environmental impact. NCGC recognizes that progressive reclamation makes up an integral part of minimizing environmental impact. During the course of the 2019 field season, Auryn continued in the following progressive reclamation:

1. During the 2014 field season several fuel berms at the Three Bluffs Drill Grid were removed and left to re-establish underlying vegetation, monitoring is ongoing.
2. The airstrip revegetation is progressing and the drainage of the regraded portion is much better following completion of work in the previous field season.
3. Backhaul of empty propane cylinders from Hayes Camp to Baker Lake then by ship to Quebec for recycling, recertification and refilling.
4. Ongoing demarcation of established pathways at all camps to limit the impact of foot and / or vehicle traffic to vegetated areas and areas susceptible to erosion.
5. All drill pads are reclaimed as soon as possible after a drill rig has moved to a new site.
6. Removal of collapsed storage tent at the Three Bluffs Grid site.

7.0 **WATER**

7.1 ***Water Use***

A grand total of 161.2 cubic metres of domestic water was used during the 2019 field season which fell between July 1st and August 15th. The water usage during the 2019 field season was for camp and kitchen use at Hayes Camp (Table 5) as well as diamond drilling (Table 6). Detailed water usage is provided in Appendix 2.

2019	Hayes Camp Total Water Usage (m ³)
July	47.8
August	23.6
Grand Total	71.4

Table 5: Domestic Water usage during 2019 field season

2019	Diamond Drill Total Water Usage (m ³)
July	107.78
August	38.62
Grand Total	146.1

Table 6: Diamond Drill Water usage during 2019 field season

7.2 ***Water Sampling***

Water samples were taken from Water Monitoring Stations CRA1, CRA2 and CRA3 during the 2019 program from Hayes Camp. Water sampling analytical results are listed in Appendix 3.

8.0 **WILDLIFE**

NCGC recognizes that the CBP is located within a diverse ecosystem with abundant flora and fauna. As part of our efforts to mitigate any impact on the local wildlife populations NCGC has a wildlife reporting system in place. Scanned copies of the Spring Mob and Summer season wildlife sightings at Hayes camp and beyond are attached as Appendix 4. Table 7 summarizes the wildlife sightings by species for the Summer 2019 field season. Figure 12 shows the resident Caribou bulls at Hayes camp.

Species	Recorded sightings
Canada Geese	4
Arctic Hare	1
Wolf	3
Caribou	23

Table 7: Wildlife sightings - 2019



Figure 12: Resident caribou took over as Hayes Camp was closed down for the Summer.

NCGC is committed to continue to monitor wildlife throughout the CBP in order to mitigate any and all effects on wildlife.

9.0 **SPILLS**

No spills occurred on the CBP during the 2019 field program.

Appendix 1: 2019 Drill Hole Locations and Dates
Appendix 2: 2019 Water Usage Logs
Appendix 3: 2019 Water Monitoring Results
Appendix 4: 2019 Wildlife Observation Logs

Appendix 1: 2019 Diamond Drill Collars and Dates

HOLEID	UTM Grid	UTM East	UTM North	Start Date	End Date
19KL001	NAD83_Z15	556904	7396726	14-Jul-19	19-Jul-19
19RG017	NAD83_Z15	569038	7404612	20-Jul-19	23-Jul-19
19RG018	NAD83_Z15	567663	7403977	24-Jul-19	28-Jul-19
19RG019	NAD83_Z15	566305	7403270	29-Jul-19	1-Aug-19
19RG020	NAD83_Z15	567927	7404023	6-Aug-19	9-Aug-19
19SH001	NAD83_Z15	564876	7402525	2-Aug-19	5-Aug-19
19TX001	NAD83_Z15	571793	7392301	9-Jul-19	13-Jul-19

Appendix 2: 2019 Water Usage Logs

	Jul-19																														
	1	2	3	4	5	6	7	8	9	10	11	12	13	14	15	16	17	18	19	20	21	22	23	24	25	26	27	28	29	30	31
Hayes Camp Kitchen				0.6	1	0.1	1.1	1	0.9	1	0.9	1	1	0.8	1.1	1.1	1.4	0.7	0.9	0.9	1.1	1.3	1.2	1.2	1.2	1.4	0.8	0.8	1.1	1.3	0.6
Hayes Camp Dry				0	0	0	0	0	0.6	0.7	1.7	0	0.6	0	0	0	0	0.9	0.7	0.6	0.9	1	0.7	0.6	0	1.5	0.8	0.3	1.3	1.1	0.7
Hayes Camp Drillers Dry					0.1	0.1	0	0	0.1	0.1	0	0	0.2	0.1	0.3	0.1	0.2	0.1	0.4	0.3	0.1	0.2	0.2	0.3	0.4	1	0.3	0.1	0.5	0.2	0.1
Diamond Drill A5A									0.0	5.5	7.9	5.1	0.0	5.0	5.2	5.7	7.9	5.4	0.0	6.2	5.2	5.2	4.2	4.4	5.6	5.3	5.5	0.0	7.8	5.6	5.2

Aug-19														
	1	2	3	4	5	6	7	8	9	10	11	12	13	14
Hayes Camp Kitchen	1.1	0.9	0.8	0.9	0.8	0.9	0.8	0.8	0.7	0.8	0.6	0.7	0.5	0.7
Hayes Camp Dry	1.3	0.8	0.9	0.7	0.7	0.9	0.7	0.6	0.7	0.6	0.4	0.7	0.5	0.7
Hayes Camp Drillers Dry	0.1	0.1	0.1	0.4	0.1	0.2	0.4	0.1	0.1	0.1	0.5	0.2		
Diamond Drill A5A	0.0	7.6	5.6	5.8	4.0	2.5	5.6	5.7	1.6					

Appendix 3: 2019 Water Monitoring Results



North Country Gold Corp.
ATTN: BRYAN ATKINSON
606 - 1199 West Hastings Street
Vancouver BC V6E 3T5

Date Received: 15-AUG-19
Report Date: 30-AUG-19 08:54 (MT)
Version: FINAL

Client Phone: 778-729-0600

Certificate of Analysis

Lab Work Order #: L2329891
Project P.O. #: NOT SUBMITTED
Job Reference:
C of C Numbers:
Legal Site Desc:



Hua Wo
Chemistry Laboratory Manager

[This report shall not be reproduced except in full without the written authority of the Laboratory.]

ADDRESS: 1329 Niakwa Road East, Unit 12, Winnipeg, MB R2J 3T4 Canada | Phone: +1 204 255 9720 | Fax: +1 204 255 9721
ALS CANADA LTD Part of the ALS Group An ALS Limited Company

ALS ENVIRONMENTAL ANALYTICAL REPORT

Sample Details/Parameters	Result	Qualifier*	D.L.	Units	Extracted	Analyzed	Batch
L2329891-1 19CRA10814 Sampled By: CLIENT on 14-AUG-19 Matrix: WATER							
Miscellaneous Parameters							
Biochemical Oxygen Demand	<2.0		2.0	mg/L		16-AUG-19	R4765540
Conductivity	12.7		1.0	umhos/cm		16-AUG-19	R4758580
Mercury (Hg)-Total	<0.0000050		0.0000050	mg/L	19-AUG-19	22-AUG-19	R4765809
Oil and Grease	<5.0		5.0	mg/L		21-AUG-19	R4762521
Total Suspended Solids	<2.0		2.0	mg/L		21-AUG-19	R4764409
pH	6.80		0.10	pH units		16-AUG-19	R4758580
Total Metals in Water by CRC ICPMS							
Aluminum (Al)-Total	0.0253		0.0030	mg/L	27-AUG-19	27-AUG-19	R4774796
Antimony (Sb)-Total	<0.00010		0.00010	mg/L	27-AUG-19	27-AUG-19	R4774796
Arsenic (As)-Total	0.00012		0.00010	mg/L	27-AUG-19	27-AUG-19	R4774796
Barium (Ba)-Total	0.00329		0.00010	mg/L	27-AUG-19	27-AUG-19	R4774796
Beryllium (Be)-Total	<0.00010		0.00010	mg/L	27-AUG-19	27-AUG-19	R4774796
Bismuth (Bi)-Total	<0.000050		0.000050	mg/L	27-AUG-19	27-AUG-19	R4774796
Boron (B)-Total	<0.010		0.010	mg/L	27-AUG-19	29-AUG-19	R4777903
Cadmium (Cd)-Total	<0.0000050		0.0000050	mg/L	27-AUG-19	27-AUG-19	R4774796
Calcium (Ca)-Total	0.951		0.050	mg/L	27-AUG-19	27-AUG-19	R4774796
Cesium (Cs)-Total	<0.000010		0.000010	mg/L	27-AUG-19	27-AUG-19	R4774796
Chromium (Cr)-Total	0.00010		0.00010	mg/L	27-AUG-19	27-AUG-19	R4774796
Cobalt (Co)-Total	<0.00010		0.00010	mg/L	27-AUG-19	27-AUG-19	R4774796
Copper (Cu)-Total	0.00071		0.00050	mg/L	27-AUG-19	27-AUG-19	R4774796
Iron (Fe)-Total	0.034		0.010	mg/L	27-AUG-19	27-AUG-19	R4774796
Lead (Pb)-Total	<0.000050		0.000050	mg/L	27-AUG-19	27-AUG-19	R4774796
Lithium (Li)-Total	<0.0010		0.0010	mg/L	27-AUG-19	27-AUG-19	R4774796
Magnesium (Mg)-Total	0.310		0.0050	mg/L	27-AUG-19	27-AUG-19	R4774796
Manganese (Mn)-Total	0.00647		0.00010	mg/L	27-AUG-19	27-AUG-19	R4774796
Molybdenum (Mo)-Total	0.000104		0.000050	mg/L	27-AUG-19	27-AUG-19	R4774796
Nickel (Ni)-Total	<0.00050		0.00050	mg/L	27-AUG-19	27-AUG-19	R4774796
Potassium (K)-Total	0.447		0.050	mg/L	27-AUG-19	27-AUG-19	R4774796
Phosphorus (P)-Total	<0.030		0.030	mg/L	27-AUG-19	27-AUG-19	R4774796
Rubidium (Rb)-Total	0.00115		0.00020	mg/L	27-AUG-19	27-AUG-19	R4774796
Selenium (Se)-Total	<0.000050		0.000050	mg/L	27-AUG-19	27-AUG-19	R4774796
Silicon (Si)-Total	0.71		0.10	mg/L	27-AUG-19	27-AUG-19	R4774796
Silver (Ag)-Total	<0.000010		0.000010	mg/L	27-AUG-19	27-AUG-19	R4774796
Sodium (Na)-Total	0.589		0.050	mg/L	27-AUG-19	27-AUG-19	R4774796
Strontium (Sr)-Total	0.00582		0.00020	mg/L	27-AUG-19	27-AUG-19	R4774796
Sulfur (S)-Total	0.77		0.50	mg/L	27-AUG-19	27-AUG-19	R4774796
Tellurium (Te)-Total	<0.00020		0.00020	mg/L	27-AUG-19	27-AUG-19	R4774796
Thallium (Tl)-Total	<0.000010		0.000010	mg/L	27-AUG-19	27-AUG-19	R4774796
Thorium (Th)-Total	<0.00010		0.00010	mg/L	27-AUG-19	27-AUG-19	R4774796
Tin (Sn)-Total	<0.00010		0.00010	mg/L	27-AUG-19	27-AUG-19	R4774796
Titanium (Ti)-Total	0.00114		0.00030	mg/L	27-AUG-19	27-AUG-19	R4774796
Tungsten (W)-Total	<0.00010		0.00010	mg/L	27-AUG-19	27-AUG-19	R4774796
Uranium (U)-Total	0.000069		0.000010	mg/L	27-AUG-19	27-AUG-19	R4774796
Vanadium (V)-Total	<0.00050		0.00050	mg/L	27-AUG-19	27-AUG-19	R4774796
Zinc (Zn)-Total	<0.0030		0.0030	mg/L	27-AUG-19	27-AUG-19	R4774796
Zirconium (Zr)-Total	<0.00020		0.00020	mg/L	27-AUG-19	27-AUG-19	R4774796
L2329891-2 19CRA20814 Sampled By: CLIENT on 14-AUG-19 Matrix: WATER							
Miscellaneous Parameters							

* Refer to Referenced Information for Qualifiers (if any) and Methodology.

ALS ENVIRONMENTAL ANALYTICAL REPORT

Sample Details/Parameters	Result	Qualifier*	D.L.	Units	Extracted	Analyzed	Batch
L2329891-2 19CRA20814							
Sampled By: CLIENT on 14-AUG-19							
Matrix: WATER							
Biochemical Oxygen Demand	<2.0		2.0	mg/L		16-AUG-19	R4765540
Conductivity	11.2		1.0	umhos/cm		16-AUG-19	R4758580
Mercury (Hg)-Total	<0.0000050		0.0000050	mg/L	19-AUG-19	22-AUG-19	R4765809
Oil and Grease	<5.0		5.0	mg/L		21-AUG-19	R4762521
Total Suspended Solids	<2.0		2.0	mg/L		21-AUG-19	R4764409
pH	6.51		0.10	pH units		16-AUG-19	R4758580
Total Metals in Water by CRC ICPMS							
Aluminum (Al)-Total	0.0213		0.0030	mg/L	27-AUG-19	27-AUG-19	R4774796
Antimony (Sb)-Total	<0.00010		0.00010	mg/L	27-AUG-19	27-AUG-19	R4774796
Arsenic (As)-Total	0.00011		0.00010	mg/L	27-AUG-19	27-AUG-19	R4774796
Barium (Ba)-Total	0.00280		0.00010	mg/L	27-AUG-19	27-AUG-19	R4774796
Beryllium (Be)-Total	<0.00010		0.00010	mg/L	27-AUG-19	27-AUG-19	R4774796
Bismuth (Bi)-Total	<0.000050		0.000050	mg/L	27-AUG-19	27-AUG-19	R4774796
Boron (B)-Total	<0.010		0.010	mg/L	27-AUG-19	29-AUG-19	R4777903
Cadmium (Cd)-Total	<0.0000050		0.0000050	mg/L	27-AUG-19	27-AUG-19	R4774796
Calcium (Ca)-Total	0.851		0.050	mg/L	27-AUG-19	27-AUG-19	R4774796
Cesium (Cs)-Total	<0.000010		0.000010	mg/L	27-AUG-19	27-AUG-19	R4774796
Chromium (Cr)-Total	0.00025		0.00010	mg/L	27-AUG-19	27-AUG-19	R4774796
Cobalt (Co)-Total	<0.00010		0.00010	mg/L	27-AUG-19	27-AUG-19	R4774796
Copper (Cu)-Total	0.00059		0.00050	mg/L	27-AUG-19	27-AUG-19	R4774796
Iron (Fe)-Total	0.022		0.010	mg/L	27-AUG-19	27-AUG-19	R4774796
Lead (Pb)-Total	<0.000050		0.000050	mg/L	27-AUG-19	27-AUG-19	R4774796
Lithium (Li)-Total	<0.0010		0.0010	mg/L	27-AUG-19	27-AUG-19	R4774796
Magnesium (Mg)-Total	0.327		0.0050	mg/L	27-AUG-19	27-AUG-19	R4774796
Manganese (Mn)-Total	0.00379		0.00010	mg/L	27-AUG-19	27-AUG-19	R4774796
Molybdenum (Mo)-Total	0.000114		0.000050	mg/L	27-AUG-19	27-AUG-19	R4774796
Nickel (Ni)-Total	0.00059		0.00050	mg/L	27-AUG-19	27-AUG-19	R4774796
Potassium (K)-Total	0.411		0.050	mg/L	27-AUG-19	27-AUG-19	R4774796
Phosphorus (P)-Total	<0.030		0.030	mg/L	27-AUG-19	27-AUG-19	R4774796
Rubidium (Rb)-Total	0.00124		0.00020	mg/L	27-AUG-19	27-AUG-19	R4774796
Selenium (Se)-Total	<0.000050		0.000050	mg/L	27-AUG-19	27-AUG-19	R4774796
Silicon (Si)-Total	0.58		0.10	mg/L	27-AUG-19	27-AUG-19	R4774796
Silver (Ag)-Total	<0.000010		0.000010	mg/L	27-AUG-19	27-AUG-19	R4774796
Sodium (Na)-Total	0.527		0.050	mg/L	27-AUG-19	27-AUG-19	R4774796
Strontium (Sr)-Total	0.00531		0.00020	mg/L	27-AUG-19	27-AUG-19	R4774796
Sulfur (S)-Total	0.58		0.50	mg/L	27-AUG-19	27-AUG-19	R4774796
Tellurium (Te)-Total	<0.00020		0.00020	mg/L	27-AUG-19	27-AUG-19	R4774796
Thallium (Tl)-Total	<0.000010		0.000010	mg/L	27-AUG-19	27-AUG-19	R4774796
Thorium (Th)-Total	<0.00010		0.00010	mg/L	27-AUG-19	27-AUG-19	R4774796
Tin (Sn)-Total	<0.00010		0.00010	mg/L	27-AUG-19	27-AUG-19	R4774796
Titanium (Ti)-Total	0.00084		0.00030	mg/L	27-AUG-19	27-AUG-19	R4774796
Tungsten (W)-Total	<0.00010		0.00010	mg/L	27-AUG-19	27-AUG-19	R4774796
Uranium (U)-Total	0.000052		0.000010	mg/L	27-AUG-19	27-AUG-19	R4774796
Vanadium (V)-Total	<0.00050		0.00050	mg/L	27-AUG-19	27-AUG-19	R4774796
Zinc (Zn)-Total	<0.0030		0.0030	mg/L	27-AUG-19	27-AUG-19	R4774796
Zirconium (Zr)-Total	<0.00020		0.00020	mg/L	27-AUG-19	27-AUG-19	R4774796
L2329891-3 19CRA30814							
Sampled By: CLIENT on 14-AUG-19							
Matrix: WATER							
Miscellaneous Parameters							
Biochemical Oxygen Demand	<2.0		2.0	mg/L		16-AUG-19	R4765540

* Refer to Referenced Information for Qualifiers (if any) and Methodology.

ALS ENVIRONMENTAL ANALYTICAL REPORT

Sample Details/Parameters	Result	Qualifier*	D.L.	Units	Extracted	Analyzed	Batch
L2329891-3 19CRA30814							
Sampled By: CLIENT on 14-AUG-19							
Matrix: WATER							
Conductivity	10.8		1.0	umhos/cm		16-AUG-19	R4758580
Mercury (Hg)-Total	<0.0000050		0.0000050	mg/L	19-AUG-19	22-AUG-19	R4765809
Oil and Grease	<5.0		5.0	mg/L		21-AUG-19	R4762521
Total Suspended Solids	<2.0		2.0	mg/L		21-AUG-19	R4764409
pH	6.59		0.10	pH units		16-AUG-19	R4758580
Total Metals in Water by CRC ICPMS							
Aluminum (Al)-Total	0.0171		0.0030	mg/L	27-AUG-19	27-AUG-19	R4774796
Antimony (Sb)-Total	<0.00010		0.00010	mg/L	27-AUG-19	27-AUG-19	R4774796
Arsenic (As)-Total	0.00012		0.00010	mg/L	27-AUG-19	27-AUG-19	R4774796
Barium (Ba)-Total	0.00260		0.00010	mg/L	27-AUG-19	27-AUG-19	R4774796
Beryllium (Be)-Total	<0.00010		0.00010	mg/L	27-AUG-19	27-AUG-19	R4774796
Bismuth (Bi)-Total	<0.000050		0.000050	mg/L	27-AUG-19	27-AUG-19	R4774796
Boron (B)-Total	<0.010		0.010	mg/L	27-AUG-19	29-AUG-19	R4777903
Cadmium (Cd)-Total	<0.0000050		0.0000050	mg/L	27-AUG-19	27-AUG-19	R4774796
Calcium (Ca)-Total	0.835		0.050	mg/L	27-AUG-19	27-AUG-19	R4774796
Cesium (Cs)-Total	<0.000010		0.000010	mg/L	27-AUG-19	27-AUG-19	R4774796
Chromium (Cr)-Total	<0.00010		0.00010	mg/L	27-AUG-19	27-AUG-19	R4774796
Cobalt (Co)-Total	<0.00010		0.00010	mg/L	27-AUG-19	27-AUG-19	R4774796
Copper (Cu)-Total	<0.00050		0.00050	mg/L	27-AUG-19	27-AUG-19	R4774796
Iron (Fe)-Total	0.028		0.010	mg/L	27-AUG-19	27-AUG-19	R4774796
Lead (Pb)-Total	<0.000050		0.000050	mg/L	27-AUG-19	27-AUG-19	R4774796
Lithium (Li)-Total	<0.0010		0.0010	mg/L	27-AUG-19	27-AUG-19	R4774796
Magnesium (Mg)-Total	0.285		0.0050	mg/L	27-AUG-19	27-AUG-19	R4774796
Manganese (Mn)-Total	0.00354		0.00010	mg/L	27-AUG-19	27-AUG-19	R4774796
Molybdenum (Mo)-Total	<0.000050		0.000050	mg/L	27-AUG-19	27-AUG-19	R4774796
Nickel (Ni)-Total	<0.00050		0.00050	mg/L	27-AUG-19	27-AUG-19	R4774796
Potassium (K)-Total	0.381		0.050	mg/L	27-AUG-19	27-AUG-19	R4774796
Phosphorus (P)-Total	<0.030		0.030	mg/L	27-AUG-19	27-AUG-19	R4774796
Rubidium (Rb)-Total	0.00115		0.00020	mg/L	27-AUG-19	27-AUG-19	R4774796
Selenium (Se)-Total	<0.000050		0.000050	mg/L	27-AUG-19	27-AUG-19	R4774796
Silicon (Si)-Total	0.57		0.10	mg/L	27-AUG-19	27-AUG-19	R4774796
Silver (Ag)-Total	<0.000010		0.000010	mg/L	27-AUG-19	27-AUG-19	R4774796
Sodium (Na)-Total	0.473		0.050	mg/L	27-AUG-19	27-AUG-19	R4774796
Strontium (Sr)-Total	0.00505		0.00020	mg/L	27-AUG-19	27-AUG-19	R4774796
Sulfur (S)-Total	0.55		0.50	mg/L	27-AUG-19	27-AUG-19	R4774796
Tellurium (Te)-Total	<0.00020		0.00020	mg/L	27-AUG-19	27-AUG-19	R4774796
Thallium (Tl)-Total	<0.000010		0.000010	mg/L	27-AUG-19	27-AUG-19	R4774796
Thorium (Th)-Total	<0.00010		0.00010	mg/L	27-AUG-19	27-AUG-19	R4774796
Tin (Sn)-Total	<0.00010		0.00010	mg/L	27-AUG-19	27-AUG-19	R4774796
Titanium (Ti)-Total	0.00074		0.00030	mg/L	27-AUG-19	27-AUG-19	R4774796
Tungsten (W)-Total	<0.00010		0.00010	mg/L	27-AUG-19	27-AUG-19	R4774796
Uranium (U)-Total	0.000049		0.000010	mg/L	27-AUG-19	27-AUG-19	R4774796
Vanadium (V)-Total	<0.00050		0.00050	mg/L	27-AUG-19	27-AUG-19	R4774796
Zinc (Zn)-Total	<0.0030		0.0030	mg/L	27-AUG-19	27-AUG-19	R4774796
Zirconium (Zr)-Total	<0.00020		0.00020	mg/L	27-AUG-19	27-AUG-19	R4774796

* Refer to Referenced Information for Qualifiers (if any) and Methodology.

Reference Information

Qualifiers for Sample Submission Listed:

Qualifier	Description
LPML	Lab-Preserved for Total Metals. Sample received with pH > 2 and preserved at the lab. Total Metals results may be biased low.

Test Method References:

ALS Test Code	Matrix	Test Description	Method Reference**
BOD-WP	Water	Biochemical Oxygen Demand (BOD)	APHA 5210 B
Samples are diluted and seeded and then incubated in airtight bottles at 20°C for 5 days. Dissolved oxygen is measured initially and after incubation, and results are computed from the difference between initial and final DO.			
EC-SCREEN-WP	Water	Conductivity Screen (Internal Use Only)	APHA 2510
Qualitative analysis of conductivity where required during preparation of other test eg. IC, TDS, TSS, etc			
EC-WP	Water	Conductivity	APHA 2510B
Conductivity of an aqueous solution refers to its ability to carry an electric current. Conductance of a solution is measured between two spatially fixed and chemically inert electrodes.			
HG-T-CVAA-WP	Water	Mercury Total	EPA 1631E (mod)
Water samples undergo a cold-oxidation using bromine monochloride prior to reduction with stannous chloride, and analyzed by CVAAS.			
MET-T-CCMS-WP	Water	Total Metals in Water by CRC ICPMS	EPA 200.2/6020B (mod.)
Water samples are digested with nitric and hydrochloric acids, and analyzed by CRC ICPMS.			
Method Limitation (re: Sulfur): Sulfide and volatile sulfur species may not be recovered by this method.			
OG-GRAV-WP	Water	Oil & Grease - Gravimetric	EPA 1664 (modified)
Water samples are acidified and extracted with hexane; the hexane extract is collected in a pre-weighed vial. The solvent is evaporated and Total Oil & Grease is determined from the weight of the residue in the vial.			
PH-WP	Water	pH	APHA 4500H
The pH of a sample is the determination of the activity of the hydrogen ions by potentiometric measurement using a standard hydrogen electrode and a reference electrode.			
SOLIDS-TOTSUS-WP	Water	Total Suspended Solids	APHA 2540 D (modified)
Total suspended solids in aqueous matrices is determined gravimetrically after drying the residue at 103 - 105°C.			

** ALS test methods may incorporate modifications from specified reference methods to improve performance.

The last two letters of the above test code(s) indicate the laboratory that performed analytical analysis for that test. Refer to the list below:

Laboratory Definition Code	Laboratory Location
WP	ALS ENVIRONMENTAL - WINNIPEG, MANITOBA, CANADA

Chain of Custody Numbers:

GLOSSARY OF REPORT TERMS

Surrogates are compounds that are similar in behaviour to target analyte(s), but that do not normally occur in environmental samples. For applicable tests, surrogates are added to samples prior to analysis as a check on recovery. In reports that display the D.L. column, laboratory objectives for surrogates are listed there.

mg/kg - milligrams per kilogram based on dry weight of sample

mg/kg ww - milligrams per kilogram based on wet weight of sample

mg/kg lwt - milligrams per kilogram based on lipid-adjusted weight

mg/L - unit of concentration based on volume, parts per million.

< - Less than.

D.L. - The reporting limit.

N/A - Result not available. Refer to qualifier code and definition for explanation.

Test results reported relate only to the samples as received by the laboratory.

UNLESS OTHERWISE STATED, ALL SAMPLES WERE RECEIVED IN ACCEPTABLE CONDITION.

Analytical results in unsigned test reports with the DRAFT watermark are subject to change, pending final QC review.

Quality Control Report

Workorder: L2329891

Report Date: 30-AUG-19

Page 1 of 6

Client: North Country Gold Corp.
606 - 1199 West Hastings Street
Vancouver BC V6E 3T5

Contact: BRYAN ATKINSON

Test	Matrix	Reference	Result	Qualifier	Units	RPD	Limit	Analyzed
BOD-WP								
Water								
Batch	R4765540							
WG3134627-2	LCS							
Biochemical Oxygen Demand			103.9		%		85-115	16-AUG-19
WG3134627-1	MB							
Biochemical Oxygen Demand			<2.0		mg/L		2	16-AUG-19
EC-WP								
Water								
Batch	R4758580							
WG3136437-23	LCS							
Conductivity			96.7		%		90-110	16-AUG-19
WG3136437-21	MB							
Conductivity			<1.0		umhos/cm		1	16-AUG-19
HG-T-CVAA-WP								
Water								
Batch	R4765809							
WG3141541-2	LCS							
Mercury (Hg)-Total			98.0		%		80-120	22-AUG-19
WG3141541-1	MB							
Mercury (Hg)-Total			<0.000005C		mg/L		0.000005	22-AUG-19
MET-T-CCMS-WP								
Water								
Batch	R4774796							
WG3144628-2	LCS							
Aluminum (Al)-Total			102.7		%		80-120	27-AUG-19
Antimony (Sb)-Total			102.0		%		80-120	27-AUG-19
Arsenic (As)-Total			101.4		%		80-120	27-AUG-19
Barium (Ba)-Total			100.9		%		80-120	27-AUG-19
Beryllium (Be)-Total			101.6		%		80-120	27-AUG-19
Bismuth (Bi)-Total			100.6		%		80-120	27-AUG-19
Cadmium (Cd)-Total			102.9		%		80-120	27-AUG-19
Calcium (Ca)-Total			102.7		%		80-120	27-AUG-19
Cesium (Cs)-Total			102.9		%		80-120	27-AUG-19
Chromium (Cr)-Total			101.7		%		80-120	27-AUG-19
Cobalt (Co)-Total			101.4		%		80-120	27-AUG-19
Copper (Cu)-Total			101.4		%		80-120	27-AUG-19
Iron (Fe)-Total			97.6		%		80-120	27-AUG-19
Lead (Pb)-Total			100.6		%		80-120	27-AUG-19
Lithium (Li)-Total			98.4		%		80-120	27-AUG-19
Magnesium (Mg)-Total			112.5		%		80-120	27-AUG-19
Manganese (Mn)-Total			101.1		%		80-120	27-AUG-19

Quality Control Report

Workorder: L2329891

Report Date: 30-AUG-19

Page 2 of 6

Test	Matrix	Reference	Result	Qualifier	Units	RPD	Limit	Analyzed
MET-T-CCMS-WP		Water						
Batch	R4774796							
WG3144628-2	LCS							
Molybdenum (Mo)-Total			101.5		%		80-120	27-AUG-19
Nickel (Ni)-Total			101.2		%		80-120	27-AUG-19
Potassium (K)-Total			100.6		%		80-120	27-AUG-19
Phosphorus (P)-Total			103.8		%		80-120	27-AUG-19
Rubidium (Rb)-Total			100.9		%		80-120	27-AUG-19
Selenium (Se)-Total			105.1		%		80-120	27-AUG-19
Silicon (Si)-Total			101.9		%		80-120	27-AUG-19
Silver (Ag)-Total			100.2		%		80-120	27-AUG-19
Sodium (Na)-Total			105.6		%		80-120	27-AUG-19
Strontium (Sr)-Total			104.0		%		80-120	27-AUG-19
Sulfur (S)-Total			97.6		%		80-120	27-AUG-19
Tellurium (Te)-Total			94.5		%		80-120	27-AUG-19
Thallium (Tl)-Total			101.4		%		80-120	27-AUG-19
Thorium (Th)-Total			96.0		%		80-120	27-AUG-19
Tin (Sn)-Total			99.8		%		80-120	27-AUG-19
Titanium (Ti)-Total			98.2		%		80-120	27-AUG-19
Tungsten (W)-Total			99.1		%		80-120	27-AUG-19
Uranium (U)-Total			103.4		%		80-120	27-AUG-19
Vanadium (V)-Total			101.7		%		80-120	27-AUG-19
Zinc (Zn)-Total			100.2		%		80-120	27-AUG-19
Zirconium (Zr)-Total			99.4		%		80-120	27-AUG-19
WG3144628-1	MB							
Aluminum (Al)-Total			<0.0030		mg/L		0.003	27-AUG-19
Antimony (Sb)-Total			<0.00010		mg/L		0.0001	27-AUG-19
Arsenic (As)-Total			<0.00010		mg/L		0.0001	27-AUG-19
Barium (Ba)-Total			<0.00010		mg/L		0.0001	27-AUG-19
Beryllium (Be)-Total			<0.00010		mg/L		0.0001	27-AUG-19
Bismuth (Bi)-Total			<0.000050		mg/L		0.00005	27-AUG-19
Cadmium (Cd)-Total			<0.0000050		mg/L		0.000005	27-AUG-19
Calcium (Ca)-Total			<0.050		mg/L		0.05	27-AUG-19
Cesium (Cs)-Total			<0.000010		mg/L		0.00001	27-AUG-19
Chromium (Cr)-Total			<0.00010		mg/L		0.0001	27-AUG-19
Cobalt (Co)-Total			<0.00010		mg/L		0.0001	27-AUG-19
Copper (Cu)-Total			<0.00050		mg/L		0.0005	27-AUG-19



Page 3 of 6

Test	Matrix	Reference	Result	Qualifier	Units	RPD	Limit	Analyzed
MET-T-CCMS-WP		Water						
Batch	R4774796							
WG3144628-1	MB							
Iron (Fe)-Total			<0.010		mg/L		0.01	27-AUG-19
Lead (Pb)-Total			<0.000050		mg/L		0.00005	27-AUG-19
Lithium (Li)-Total			<0.0010		mg/L		0.001	27-AUG-19
Magnesium (Mg)-Total			<0.0050		mg/L		0.005	27-AUG-19
Manganese (Mn)-Total			<0.00010		mg/L		0.0001	27-AUG-19
Molybdenum (Mo)-Total			<0.000050		mg/L		0.00005	27-AUG-19
Nickel (Ni)-Total			<0.00050		mg/L		0.0005	27-AUG-19
Potassium (K)-Total			<0.050		mg/L		0.05	27-AUG-19
Phosphorus (P)-Total			<0.030		mg/L		0.03	27-AUG-19
Rubidium (Rb)-Total			<0.00020		mg/L		0.0002	27-AUG-19
Selenium (Se)-Total			<0.000050		mg/L		0.00005	27-AUG-19
Silicon (Si)-Total			<0.10		mg/L		0.1	27-AUG-19
Silver (Ag)-Total			<0.000010		mg/L		0.00001	27-AUG-19
Sodium (Na)-Total			<0.050		mg/L		0.05	27-AUG-19
Strontium (Sr)-Total			<0.00020		mg/L		0.0002	27-AUG-19
Sulfur (S)-Total			<0.50		mg/L		0.5	27-AUG-19
Tellurium (Te)-Total			<0.00020		mg/L		0.0002	27-AUG-19
Thallium (Tl)-Total			<0.000010		mg/L		0.00001	27-AUG-19
Thorium (Th)-Total			<0.00010		mg/L		0.0001	27-AUG-19
Tin (Sn)-Total			<0.00010		mg/L		0.0001	27-AUG-19
Titanium (Ti)-Total			<0.00030		mg/L		0.0003	27-AUG-19
Tungsten (W)-Total			<0.00010		mg/L		0.0001	27-AUG-19
Uranium (U)-Total			<0.000010		mg/L		0.00001	27-AUG-19
Vanadium (V)-Total			<0.00050		mg/L		0.0005	27-AUG-19
Zinc (Zn)-Total			<0.0030		mg/L		0.003	27-AUG-19
Zirconium (Zr)-Total			<0.00020		mg/L		0.0002	27-AUG-19
OG-GRAV-WP		Water						
Batch	R4762521							
WG3137204-2	LCS							
Oil and Grease			93.9		%		70-130	21-AUG-19
WG3137204-1	MB							
Oil and Grease			<5.0		mg/L		5	21-AUG-19
PH-WP		Water						

Quality Control Report

Workorder: L2329891

Report Date: 30-AUG-19

Page 4 of 6

Test	Matrix	Reference	Result	Qualifier	Units	RPD	Limit	Analyzed
PH-WP	Water							
Batch	R4758580							
WG3136437-22 LCS								
pH			7.37		pH units		7.3-7.5	16-AUG-19
SOLIDS-TOTSUS-WP	Water							
Batch	R4764409							
WG3138145-12 LCS								
Total Suspended Solids			96.4		%		85-115	21-AUG-19
WG3138145-11 MB								
Total Suspended Solids			<2.0		mg/L		2	21-AUG-19

Quality Control Report

Workorder: L2329891

Report Date: 30-AUG-19

Page 5 of 6

Legend:

Limit	ALS Control Limit (Data Quality Objectives)
DUP	Duplicate
RPD	Relative Percent Difference
N/A	Not Available
LCS	Laboratory Control Sample
SRM	Standard Reference Material
MS	Matrix Spike
MSD	Matrix Spike Duplicate
ADE	Average Desorption Efficiency
MB	Method Blank
IRM	Internal Reference Material
CRM	Certified Reference Material
CCV	Continuing Calibration Verification
CVS	Calibration Verification Standard
LCSD	Laboratory Control Sample Duplicate

Quality Control Report

Workorder: L2329891

Report Date: 30-AUG-19

Page 6 of 6

Hold Time Exceedances:

ALS Product Description	Sample ID	Sampling Date	Date Processed	Rec. HT	Actual HT	Units	Qualifier
Physical Tests							
pH	1	14-AUG-19	16-AUG-19 12:00	0.25	48	hours	EHTR-FM
	2	14-AUG-19	16-AUG-19 12:00	0.25	48	hours	EHTR-FM
	3	14-AUG-19	16-AUG-19 12:00	0.25	48	hours	EHTR-FM

Legend & Qualifier Definitions:

EHTR-FM: Exceeded ALS recommended hold time prior to sample receipt. Field Measurement recommended.
EHTR: Exceeded ALS recommended hold time prior to sample receipt.
EHTL: Exceeded ALS recommended hold time prior to analysis. Sample was received less than 24 hours prior to expiry.
EHT: Exceeded ALS recommended hold time prior to analysis.
Rec. HT: ALS recommended hold time (see units).

Notes*:

Where actual sampling date is not provided to ALS, the date (& time) of receipt is used for calculation purposes.
Where actual sampling time is not provided to ALS, the earlier of 12 noon on the sampling date or the time (& date) of receipt is used for calculation purposes. Samples for L2329891 were received on 15-AUG-19 15:50.

ALS recommended hold times may vary by province. They are assigned to meet known provincial and/or federal government requirements. In the absence of regulatory hold times, ALS establishes recommendations based on guidelines published by the US EPA, APHA Standard Methods, or Environment Canada (where available). For more information, please contact ALS.

The ALS Quality Control Report is provided to ALS clients upon request. ALS includes comprehensive QC checks with every analysis to ensure our high standards of quality are met. Each QC result has a known or expected target value, which is compared against pre-determined data quality objectives to provide confidence in the accuracy of associated test results.

Please note that this report may contain QC results from anonymous Sample Duplicates and Matrix Spikes that do not originate from this Work Order.



Chain of Custody (COC) / Analytical Request Form

L2329891-COFC

DOC Number: 17 - 750869

Page of 100

[illegible]

REFER TO BACK PAGE FOR ALS LOCATIONS AND SAMPLING INFORMATION

WHITE - LABORATORY COPY YELLOW - CLIENT COPY

11 MAY 2018 GARCIA

1. If any water samples are taken from a **Regulated Drinking Water (DW) System**, please submit using an **Authorized DW COC form**.

Appendix 4: 2019 Wildlife Observation Logs

Incidental Wildlife Sighting / Sign Form
(please fill in as much information as possible)



NORTHCOUNTRYGOLD
NCG:TSX-V

(space is provided on the reverse for an illustration of the wildlife's location and activity along with additional space for notes and/or a description of the wildlife "sign" observed)

1. What was sighted?

a. Species sighted: Arctic Hare
(see Common Species List on reverse)

b. How many in each group?:

Age	Sex
<input type="checkbox"/> Adult	<input type="checkbox"/> Male
<input type="checkbox"/> Sub-Adult	<input type="checkbox"/> Female
<input type="checkbox"/> Yearling / newborn	<input type="checkbox"/> Unknown
<input type="checkbox"/> Unknown	

2. When was the sighting?

a. Date (MM/DD/YY): 07/04/19

b. Time (exact or approximate): 8pm

<input checked="" type="checkbox"/> Day	<input type="checkbox"/> Night	<input type="checkbox"/> Dusk	<input type="checkbox"/> Dawn
---	--------------------------------	-------------------------------	-------------------------------

c. Description (e.g. any notes on species, size, color, antlers, etc.): Grey / white hare

d. Behaviour - Please provide a description of the animals' behaviour. What was it / were they doing? How long? etc.

Skitting in and out of wood storage - ran off across runway

e. Was the individual / group sighted over a period of time? ☐ Yes ☒ No If so, for how long? _____

f. Was any action taken? ☐ Yes ☒ No If so, what? _____

3. Where was the sighting?

a. GPS Coordinates: Hayes camp b. Datum: _____

c. Was sighting within camp? ☒ Yes ☐ No d. If not, how far from camp boundary? _____

e. Please describe the location (e.g. "on hill next to cook's tent"), as well as the direction the wildlife was traveling:

wood storage yard

4. Weather Conditions:

Snowfall	<input type="checkbox"/> Light <input type="checkbox"/> Moderate <input type="checkbox"/> Heavy	Rainfall	<input type="checkbox"/> Light <input type="checkbox"/> Moderate <input type="checkbox"/> Heavy
Wind	<input checked="" type="checkbox"/> Breeze <input type="checkbox"/> Moderate <input type="checkbox"/> Strong	Sky	<input checked="" type="checkbox"/> Clear Sky <input type="checkbox"/> Partly Cloudy <input type="checkbox"/> Overcast

Recent Conditions: _____

f. Was a photo taken? ☐ Yes ☒ No

Photo (file) name/number: _____

Observed by: Bryan

Incidental Wildlife Sighting / Sign Form
(please fill in as much information as possible)



NORTHCOUNTRYGOLD
NCG: TSX-V

(space is provided on the reverse for an illustration of the wildlife's location and activity along with additional space for notes and/or a description of the wildlife "sign" observed)

1. What was sighted?

a. Species sighted: Caribou
(see Common Species List on reverse)

b. How many in each group?:

Age	Sex
<input type="checkbox"/> Adult	<input type="checkbox"/> Male
<input checked="" type="checkbox"/> Sub-Adult	<input checked="" type="checkbox"/> Female
<input type="checkbox"/> Yearling / newborn	<input type="checkbox"/> Unknown
<input type="checkbox"/> Unknown	

2. When was the sighting?

a. Date (MM/DD/YY): 07/05/19

b. Time (exact or approximate): 10am

<input checked="" type="checkbox"/>	<input type="checkbox"/>	<input type="checkbox"/>	<input type="checkbox"/>
Day	Night	Dusk	Dawn

c. Description (e.g. any notes on species, size, color, antlers, etc.): young single whitish caribou

d. Behaviour - Please provide a description of the animals' behaviour. What was it / were they doing? How long? etc.
Circled pad area + geo while setting out first collar

e. Was the individual / group sighted over a period of time? ☒ Yes ☐ No If so, for how long? 15mins

f. Was any action taken? ☐ Yes ☒ No If so, what? _____

3. Where was the sighting?

a. GPS Coordinates: 571782 7392301 b. Datum: 15N NAD83

c. Was sighting within camp? ☐ Yes ☒ No d. If not, how far from camp boundary? 10km

e. Please describe the location (e.g. "on hill next to cook's tent"), as well as the direction the wildlife was traveling:

Circled field area

4. Weather Conditions:

Snowfall	<input type="checkbox"/> Light <input type="checkbox"/> Moderate <input type="checkbox"/> Heavy	Rainfall	<input type="checkbox"/> Light <input type="checkbox"/> Moderate <input type="checkbox"/> Heavy
Wind	<input type="checkbox"/> Breeze <input checked="" type="checkbox"/> Moderate <input type="checkbox"/> Strong	Sky	<input type="checkbox"/> Clear Sky <input checked="" type="checkbox"/> Partly Cloudy <input type="checkbox"/> Overcast

Recent Conditions: _____

f. Was a photo taken? ☐ Yes ☒ No

Photo (file) name/number: _____

Observed by: Bryan, Eli, Travis

Incidental Wildlife Sighting / Sign Form

(please fill in as much information as possible)



NORTHCOUNTRYGOLD

NOG:TSX-V

(space is provided on the reverse for an illustration of the wildlife's location and activity along with additional space for notes and/or a description of the wildlife "sign" observed)

1. What was sighted?

a. Species sighted: Caribou
(see Common Species List on reverse)

b. How many in each group?:

Age

<input type="checkbox"/>
<input type="checkbox"/>
<input type="checkbox"/>
<input type="checkbox"/>

Adult

Sub-Adult

Yearling / newborn

Unknown

Sex

<input checked="" type="checkbox"/>
<input type="checkbox"/>
<input checked="" type="checkbox"/>

Male

Female

Unknown

2. When was the sighting?

a. Date (MM/DD/YY): 07/06/19

b. Time (exact or approximate):

☒

Day

☐

Night

☐

Dusk

☐

Dawn

c. Description (e.g. any notes on species, size, color, antlers, etc.): Antlers on one

d. Behaviour - Please provide a description of the animals' behaviour. What was it / were they doing? How long? etc.

walking along water edge

e. Was the individual / group sighted over a period of time? ☐ Yes ☒ No If so, for how long? _____

f. Was any action taken? ☒ Yes ☐ No If so, what? mentioned over Radio

3. Where was the sighting?

a. GPS Coordinates: _____ b. Datum: _____

c. Was sighting within camp? ☒ Yes ☐ No d. If not, how far from camp boundary? _____

e. Please describe the location (e.g. "on hill next to cook's tent"), as well as the direction the wildlife was traveling:

North of Q 2

4. Weather Conditions:

Snowfall

<input type="checkbox"/>
<input type="checkbox"/>
<input type="checkbox"/>

Light

Moderate

Heavy

Rainfall

<input checked="" type="checkbox"/>
<input type="checkbox"/>
<input type="checkbox"/>

Light

Moderate

Heavy

Wind

<input type="checkbox"/>
<input checked="" type="checkbox"/>
<input type="checkbox"/>

Breeze

Moderate

Strong

Sky

<input type="checkbox"/>
<input checked="" type="checkbox"/>
<input type="checkbox"/>

Clear Sky

Partly Cloudy

Overcast

Recent Conditions: _____

f. Was a photo taken? ☐ Yes ☒ No

Photo (file) name/number: _____

Observed by: Wayne Oms

Incidental Wildlife Sighting / Sign Form

(please fill in as much information as possible)



NORTHCOUNTRYGOLD
NCG:TSX-V

(space is provided on the reverse for an illustration of the wildlife's location and activity along with additional space for notes and/or a description of the wildlife "sign" observed)

1. What was sighted?

a. Species sighted: Caribou
(see Common Species List on reverse)

b. How many in each group?: 1 And 2

Age	Sex
<input checked="" type="checkbox"/> Adult	<input type="checkbox"/> Male
<input type="checkbox"/> Sub-Adult	<input type="checkbox"/> Female
<input type="checkbox"/> Yearling / newborn	<input checked="" type="checkbox"/> Unknown
<input type="checkbox"/> Unknown	

2. When was the sighting?

a. Date (MM/DD/YY): 07/07/14

b. Time (exact or approximate): 2 pm

<input checked="" type="checkbox"/> Day	<input type="checkbox"/> Night	<input type="checkbox"/> Dusk	<input type="checkbox"/> Dawn
---	--------------------------------	-------------------------------	-------------------------------

c. Description (e.g. any notes on species, size, color, antlers, etc.): Beige/whitish Adult
looked healthy

d. Behaviour - Please provide a description of the animals' behaviour. What was it / were they doing? How long? etc.

Came to out post circled around

e. Was the individual / group sighted over a period of time? ☒ Yes ☐ No If so, for how long? Approx 10 mins

f. Was any action taken? ☐ Yes ☒ No If so, what? _____

3. Where was the sighting?

a. GPS Coordinates: TBRK b. Datum: _____

c. Was sighting within camp? ☐ Yes ☒ No d. If not, how far from camp boundary? _____

e. Please describe the location (e.g. "on hill next to cook's tent"), as well as the direction the wildlife was traveling:

Animal slowly made its way towards us, stand watching and listening to us for a minute then circled around us and continued on towards 3 Bluffs

4. Weather Conditions:

Snowfall	<input type="checkbox"/> Light <input type="checkbox"/> Moderate <input type="checkbox"/> Heavy	Rainfall	<input type="checkbox"/> Light <input type="checkbox"/> Moderate <input type="checkbox"/> Heavy
Wind	<input type="checkbox"/> Breeze <input checked="" type="checkbox"/> Moderate <input type="checkbox"/> Strong	Sky	<input type="checkbox"/> Clear Sky <input checked="" type="checkbox"/> Partly Cloudy <input type="checkbox"/> Overcast

Recent Conditions: _____

f. Was a photo taken? ☐ Yes ☒ No

Photo (file) name/number: _____

Observed by: Eli Tennent

Incidental Wildlife Sighting / Sign Form

(please fill in as much information as possible)



NORTHCOUNTRYGOLD
NCG:TSX-V

(space is provided on the reverse for an illustration of the wildlife's location and activity along with additional space for notes and/or a description of the wildlife "sign" observed)

1. What was sighted?

a. Species sighted: Geese
(see Common Species List on reverse)

b. How many in each group?:

Age	Sex
<input type="checkbox"/> Adult	<input type="checkbox"/> Male
<input type="checkbox"/> Sub-Adult	<input type="checkbox"/> Female
<input type="checkbox"/> Yearling / newborn	<input checked="" type="checkbox"/> Unknown
<input type="checkbox"/> Unknown	

2. When was the sighting?

a. Date (MM/DD/YY): 07/07/19

b. Time (exact or approximate):

<input checked="" type="checkbox"/> Day	<input type="checkbox"/> Night	<input type="checkbox"/> Dusk	<input type="checkbox"/> Dawn
---	--------------------------------	-------------------------------	-------------------------------

c. Description (e.g. any notes on species, size, color, antlers, etc.): Large Geese low flying

d. Behaviour - Please provide a description of the animals' behaviour. What was it / were they doing? How long? etc.

e. Was the individual / group sighted over a period of time? ☒ Yes ☐ No If so, for how long? Quickly flew over

f. Was any action taken? ☐ Yes ☐ No If so, what?

3. Where was the sighting?

a. GPS Coordinates: TBex b. Datum:

c. Was sighting within camp? ☐ Yes ☒ No d. If not, how far from camp boundary?

e. Please describe the location (e.g. "on hill next to cook's tent"), as well as the direction the wildlife was traveling:

flew over our sight TBex
03 towards 3 bluffs

4. Weather Conditions:

Snowfall	<input type="checkbox"/> Light <input type="checkbox"/> Moderate <input type="checkbox"/> Heavy	Rainfall	<input type="checkbox"/> Light <input type="checkbox"/> Moderate <input type="checkbox"/> Heavy
Wind	<input type="checkbox"/> Breeze <input checked="" type="checkbox"/> Moderate <input type="checkbox"/> Strong	Sky	<input type="checkbox"/> Clear Sky <input checked="" type="checkbox"/> Partly Cloudy <input type="checkbox"/> Overcast

Recent Conditions:

f. Was a photo taken? ☐ Yes ☒ No

Photo (file) name/number:

Observed by: Eli Tennent

Incidental Wildlife Sighting / Sign Form

(please fill in as much information as possible)



NORTHCOUNTRYGOLD
NCG: T5X-V

(space is provided on the reverse for an illustration of the wildlife's location and activity along with additional space for notes and/or a description of the wildlife "sign" observed)

1. What was sighted?

a. Species sighted: Caribou
(see Common Species List on reverse)

b. How many in each group?:

Age	Sex
<input checked="" type="checkbox"/> Adult	<input checked="" type="checkbox"/> Male
<input type="checkbox"/> Sub-Adult	<input type="checkbox"/> Female
<input type="checkbox"/> Yearling / newborn	<input type="checkbox"/> Unknown
<input type="checkbox"/> Unknown	

2. When was the sighting?

a. Date (MM/DD/YY): 07/07/19

b. Time (exact or approximate): 6:16 pm

<input checked="" type="checkbox"/>	<input type="checkbox"/>	<input type="checkbox"/>	<input type="checkbox"/>
Day	Night	Dusk	Dawn

c. Description (e.g. any notes on species, size, color, antlers, etc.): large velvet antlers

d. Behaviour - Please provide a description of the animals' behaviour. What was it / were they doing? How long? etc.

hanging around camp/generators all morning

e. Was the individual / group sighted over a period of time? ☒ Yes ☐ No If so, for how long? 4-5 hrs

f. Was any action taken? ☐ Yes ☒ No If so, what? off on all day.

3. Where was the sighting?

a. GPS Coordinates: Hayes camp b. Datum: _____

c. Was sighting within camp? ☒ Yes ☐ No d. If not, how far from camp boundary? _____

e. Please describe the location (e.g. "on hill next to cook's tent"), as well as the direction the wildlife was traveling:

wandering between camp
raising and lowering/generators

4. Weather Conditions:

Snowfall	<input type="checkbox"/> Light <input type="checkbox"/> Moderate <input type="checkbox"/> Heavy	Rainfall	<input type="checkbox"/> Light <input type="checkbox"/> Moderate <input type="checkbox"/> Heavy
Wind	<input checked="" type="checkbox"/> Breeze <input type="checkbox"/> Moderate <input type="checkbox"/> Strong	Sky	<input checked="" type="checkbox"/> Clear Sky <input type="checkbox"/> Partly Cloudy <input type="checkbox"/> Overcast

Recent Conditions: _____

f. Was a photo taken? ☐ Yes ☒ No

Photo (file) name/number: _____

Observed by: Wayne, Stanley, Byron, Scott,
Kenneth

Incidental Wildlife Sighting / Sign Form
(please fill in as much information as possible)



NORTHCOUNTRYGOLD
NCG: TSX-V

(space is provided on the reverse for an illustration of the wildlife's location and activity along with additional space for notes and/or a description of the wildlife "sign" observed)

1. What was sighted?

a. Species sighted: Caribou
(see Common Species List on reverse)

b. How many in each group?:

Age		Sex	
<input type="checkbox"/> 1	Adult	<input checked="" type="checkbox"/>	Male
<input checked="" type="checkbox"/>	Sub-Adult	<input type="checkbox"/>	Female
<input type="checkbox"/>	Yearling / newborn	<input type="checkbox"/>	Unknown
<input type="checkbox"/>	Unknown		

2. When was the sighting?

a. Date (MM/DD/YY): 07/10/2019

b. Time (exact or approximate): 2 PM

<input checked="" type="checkbox"/>	<input type="checkbox"/>	<input type="checkbox"/>	<input type="checkbox"/>
Day	Night	Dusk	Dawn

c. Description (e.g. any notes on species, size, color, antlers, etc.): medium size body medium size antlers

d. Behaviour - Please provide a description of the animals' behaviour. What was it / were they doing? How long? etc.
grazing on the tundra

e. Was the individual / group sighted over a period of time? ☐ Yes ☒ No If so, for how long? 15 minutes

f. Was any action taken? ☐ Yes ☒ No If so, what? IT Just kept grazing and moved on

3. Where was the sighting?

a. GPS Coordinates: Hayes Camp b. Datum: _____

c. Was sighting within camp? ☒ Yes ☐ No d. If not, how far from camp boundary? _____

e. Please describe the location (e.g. "on hill next to cook's tent"), as well as the direction the wildlife was traveling:

over by the lake just west of camp

4. Weather Conditions:

Snowfall	<input type="checkbox"/> Light <input type="checkbox"/> Moderate <input type="checkbox"/> Heavy	Rainfall	<input checked="" type="checkbox"/> Light <input type="checkbox"/> Moderate <input type="checkbox"/> Heavy
Wind	<input checked="" type="checkbox"/> Breeze <input type="checkbox"/> Moderate <input type="checkbox"/> Strong	Sky	<input type="checkbox"/> Clear Sky <input type="checkbox"/> Partly Cloudy <input checked="" type="checkbox"/> Overcast

Recent Conditions: Rain for last two days

f. Was a photo taken? ☐ Yes ☒ No

Photo (file) name/number: _____

Observed by: Scott Ames

Incidental Wildlife Sighting / Sign Form

(please fill in as much information as possible)



NORTH COUNTRY GOLD
NCG: TSX-V

(space is provided on the reverse for an illustration of the wildlife's location and activity along with additional space for notes and/or a description of the wildlife "sign" observed)

1. What was sighted?

a. Species sighted: Caribou
(see Common Species List on reverse)

b. How many in each group?:

Age		Sex	
<input checked="" type="checkbox"/>	Adult	<input checked="" type="checkbox"/>	Male
<input type="checkbox"/>	Sub-Adult	<input type="checkbox"/>	Female
<input type="checkbox"/>	Yearling / newborn	<input type="checkbox"/>	Unknown
<input type="checkbox"/>	Unknown		

2. When was the sighting?

a. Date (MM/DD/YY): 7/10/19
b. Time (exact or approximate): 9:00 AM

<input type="checkbox"/>	<input type="checkbox"/>	<input type="checkbox"/>	<input type="checkbox"/>
Day	Night	Dusk	Dawn

c. Description (e.g. any notes on species, size, color, antlers, etc.): white in color, Black Circle eyes

d. Behaviour - Please provide a description of the animals' behaviour. What was it / were they doing? How long? etc.

off against the mountain grazing

e. Was the individual / group sighted over a period of time? ☐ Yes ☒ No If so, for how long? _____

f. Was any action taken? ☐ Yes ☒ No If so, what? _____

3. Where was the sighting?

a. GPS Coordinates: _____ b. Datum: _____

c. Was sighting within camp? ☐ Yes ☒ No d. If not, how far from camp boundary? 1/4 mile

e. Please describe the location (e.g. "on hill next to cook's tent"), as well as the direction the wildlife was traveling:

1/4 mile North east of camp

4. Weather Conditions:

Snowfall	<input type="checkbox"/> Light <input type="checkbox"/> Moderate <input type="checkbox"/> Heavy	Rainfall	<input checked="" type="checkbox"/> Light <input type="checkbox"/> Moderate <input type="checkbox"/> Heavy
Wind	<input type="checkbox"/> Breeze <input type="checkbox"/> Moderate <input type="checkbox"/> Strong	Sky	<input type="checkbox"/> Clear Sky <input type="checkbox"/> Partly Cloudy <input type="checkbox"/> Overcast

Recent Conditions: _____

1. Was a photo taken? ☐ Yes ☒ No

Photo (file) name/number: _____

Observed by: Wayne Ames

Incidental Wildlife Sighting / Sign Form
(please fill in as much information as possible)



NORTHCOUNTRYGOLD
NCG: TSN-V

(space is provided on the reverse for an illustration of the wildlife's location and activity along with additional space for notes and/or a description of the wildlife "sign" observed)

1. What was sighted?

a. Species sighted: Arctic Wolf
(see Common Species List on reverse)

b. How many in each group?:

(Single)

Age	Sex
<input type="checkbox"/> Adult	<input type="checkbox"/> Male
<input type="checkbox"/> Sub-Adult	<input type="checkbox"/> Female
<input type="checkbox"/> Yearling / newborn	<input checked="" type="checkbox"/> Unknown
<input type="checkbox"/> Unknown	

2. When was the sighting?

a. Date (MM/DD/YY): 07/11/2019

b. Time (exact or approximate):

<input checked="" type="checkbox"/> Day	<input type="checkbox"/> Night	<input type="checkbox"/> Dusk	<input type="checkbox"/> Dawn
---	--------------------------------	-------------------------------	-------------------------------

Before Noon.

c. Description (e.g. any notes on species, size, color, antlers, etc.):

white, creamy colored
adolescent = mid size.

d. Behaviour - Please provide a description of the animals' behaviour. What was it / were they doing? How long? etc.

curious but cautious.

e. Was the individual / group sighted over a period of time? ☐ Yes ☐ No If so, for how long? not yet.

f. Was any action taken? ☐ Yes ☒ No If so, what? _____

3. Where was the sighting?

a. GPS Coordinates: _____

b. Datum: _____

c. Was sighting within camp? ☐ Yes ☒ No

d. If not, how far from camp boundary? _____

e. Please describe the location (e.g. "on hill next to cook's tent"), as well as the direction the wildlife was traveling:

travelled NW

4. Weather Conditions:

Snowfall	<input checked="" type="checkbox"/> Light <input type="checkbox"/> Moderate <input type="checkbox"/> Heavy	Rainfall	<input checked="" type="checkbox"/> Light <input type="checkbox"/> Moderate <input type="checkbox"/> Heavy
Wind	<input checked="" type="checkbox"/> Breeze <input type="checkbox"/> Moderate <input type="checkbox"/> Strong	Sky	<input type="checkbox"/> Clear Sky <input type="checkbox"/> Partly Cloudy <input checked="" type="checkbox"/> Overcast

Recent Conditions: _____

f. Was a photo taken? ☐ Yes ☒ No

Photo (file) name/number: _____

Observed by: Miss Fiona Cavallin

Incidental Wildlife Sighting / Sign Form

(please fill in as much information as possible)



NORTH COUNTRY GOLD
NCG:TSX-V

(space is provided on the reverse for an illustration of the wildlife's location and activity along with additional space for notes and/or a description of the wildlife "sign" observed)

1. What was sighted?

a. Species sighted: WOLF
(see Common Species List on reverse)

b. How many in each group?:

Age		Sex	
<input checked="" type="checkbox"/> Adult		<input type="checkbox"/> Male	
<input type="checkbox"/> Sub-Adult		<input type="checkbox"/> Female	
<input type="checkbox"/> Yearling / newborn		<input checked="" type="checkbox"/> Unknown	
<input type="checkbox"/> Unknown			

2. When was the sighting?

a. Date (MM/DD/YY): 07/13/19

b. Time (exact or approximate):

<input type="checkbox"/>	<input checked="" type="checkbox"/>	<input checked="" type="checkbox"/>	<input type="checkbox"/>
Day	Night	Dusk	Dawn

c. Description (e.g. any notes on species, size, color, antlers, etc.): WOLF, 6 FT LONG, 120 LBS, WHITE WITH GREY-BROWN FACE

d. Behaviour - Please provide a description of the animals' behaviour. What was it / were they doing? How long? etc.

ACTED LIKE WALKING ONLY BUT TURNS AND COMES TOWARD, WITHIN 40 FT, MADE

e. Was the individual / group sighted over a period of time? ☐ Yes ☒ No If so, for how long? _____

f. Was any action taken? ☒ Yes ☐ No If so, what? MADE LOUD BANGING NOISE

3. Where was the sighting?

a. GPS Coordinates: 19TX 001 b. Datum: _____

c. Was sighting within camp? ☐ Yes ☒ No d. If not, how far from camp boundary? _____

e. Please describe the location (e.g. "on hill next to cook's tent"), as well as the direction the wildlife was traveling:

4. Weather Conditions:

Snowfall	<input type="checkbox"/> Light <input type="checkbox"/> Moderate <input type="checkbox"/> Heavy	Rainfall	<input type="checkbox"/> Light <input type="checkbox"/> Moderate <input type="checkbox"/> Heavy
Wind	<input type="checkbox"/> Breeze <input type="checkbox"/> Moderate <input type="checkbox"/> Strong	Sky	<input type="checkbox"/> Clear Sky <input checked="" type="checkbox"/> Partly Cloudy <input type="checkbox"/> Overcast

Recent Conditions: _____

f. Was a photo taken? ☐ Yes ☒ No

Photo (file) name/number: _____

Observed by: _____

Incidental Wildlife Sighting / Sign Form

(please fill in as much information as possible)



NORTHCOUNTRYGOLD
NCG: TSN-V

(space is provided on the reverse for an illustration of the wildlife's location and activity along with additional space for notes and/or a description of the wildlife "sign" observed)

1. What was sighted?

a. Species sighted: Canada Geese
(see Common Species List on reverse)

b. How many in each group?:

Age	Sex
<input checked="" type="checkbox"/> Adult	<input type="checkbox"/> Male
<input type="checkbox"/> Sub-Adult	<input type="checkbox"/> Female
<input checked="" type="checkbox"/> Yearling / newborn	<input checked="" type="checkbox"/> Unknown
<input type="checkbox"/> Unknown	

2. When was the sighting?

a. Date (MM/DD/YY): 7.16.19

b. Time (exact or approximate): 7.30AM

<input checked="" type="checkbox"/>	<input type="checkbox"/>	<input type="checkbox"/>	<input type="checkbox"/>
Day	Night	Dusk	Dawn

c. Description (e.g. any notes on species, size, color, antlers, etc.): Pair of Canada geese with 5 goslings

d. Behaviour - Please provide a description of the animals' behaviour. What was it / were they doing? How long? etc.

The geese and the five goslings were swimming along the shore in SAND split lake

e. Was the individual / group sighted over a period of time? ☐ Yes ☒ No If so, for how long? Few minutes

f. Was any action taken? ☐ Yes ☒ No If so, what? _____

3. Where was the sighting?

a. GPS Coordinates: _____ b. Datum: _____

c. Was sighting within camp? ☒ Yes ☐ No d. If not, how far from camp boundary? _____

e. Please describe the location (e.g. "on hill next to cook's tent"), as well as the direction the wildlife was traveling:

lake next to camp

4. Weather Conditions:

Snowfall	<input type="checkbox"/> Light <input type="checkbox"/> Moderate <input type="checkbox"/> Heavy	Rainfall	<input type="checkbox"/> Light <input type="checkbox"/> Moderate <input type="checkbox"/> Heavy
Wind	<input type="checkbox"/> Breeze <input type="checkbox"/> Moderate <input type="checkbox"/> Strong	Sky	<input checked="" type="checkbox"/> Clear Sky <input type="checkbox"/> Partly Cloudy <input type="checkbox"/> Overcast

Recent Conditions: Beautiful morning

f. Was a photo taken? ☐ Yes ☒ No

Photo (file) name/number: _____

Observed by: Scott Ames

Incidental Wildlife Sighting / Sign Form
(please fill in as much information as possible)



NORTH COUNTRY GOLD
NCG-TSX-V

(space is provided on the reverse for an illustration of the wildlife's location and activity along with additional space for notes and/or a description of the wildlife "sign" observed)

1. What was sighted?

a. Species sighted: CARIBOU
(see Common Species List on reverse)

b. How many in each group?:

Age		Sex	
<input checked="" type="checkbox"/> Adult		<input checked="" type="checkbox"/> Male	
<input type="checkbox"/> Sub-Adult		<input type="checkbox"/> Female	
<input type="checkbox"/> Yearling / newborn		<input type="checkbox"/> Unknown	
<input type="checkbox"/> Unknown			

2. When was the sighting?

a. Date (MM/DD/YY): 07 21 2019

b. Time (exact or approximate): 10H46

<input checked="" type="checkbox"/>	<input type="checkbox"/>	<input type="checkbox"/>	<input type="checkbox"/>
Day	Night	Dusk	Dawn

c. Description (e.g. any notes on species, size, color, antlers, etc.):

LARGE ANTLERS, MOD BODY IN MOD GOOD SHAPE.

d. Behaviour - Please provide a description of the animals' behaviour. What was it / were they doing? How long? etc.

WALKING FROM N TO S ALONG EDGE OF TENTS / GEO OFFICE THEN CORE SHACK.

e. Was the individual / group sighted over a period of time? ☒ Yes ☐ No If so, for how long? HALF THE DAY

f. Was any action taken? ☐ Yes ☒ No If so, what? _____

3. Where was the sighting?

a. GPS Coordinates: 66° 39' 31" 91° 33' 11" W b. Datum: NAD83

c. Was sighting within camp? ☒ Yes ☐ No d. If not, how far from camp boundary? _____

e. Please describe the location (e.g. "on hill next to cook's tent"), as well as the direction the wildlife was traveling:

SEE PARA 1(d)

4. Weather Conditions:

Snowfall	<input type="checkbox"/> Light <input type="checkbox"/> Moderate <input type="checkbox"/> Heavy	Rainfall	<input type="checkbox"/> Light <input type="checkbox"/> Moderate <input type="checkbox"/> Heavy
Wind	<input checked="" type="checkbox"/> Breeze <input type="checkbox"/> Moderate <input type="checkbox"/> Strong	Sky	<input type="checkbox"/> Clear Sky <input checked="" type="checkbox"/> Partly Cloudy <input type="checkbox"/> Overcast

Recent Conditions: WARM, CALM W.

f. Was a photo taken? ☐ Yes ☒ No

Photo (file) name/number: _____

Observed by: P. SCHOEEMAN

Incidental Wildlife Sighting / Sign Form

(please fill in as much information as possible)



NORTHCOUNTRYGOLD
NCG: TSX-V

(space is provided on the reverse for an illustration of the wildlife's location and activity along with additional space for notes and/or a description of the wildlife "sign" observed)

1. What was sighted?

a. Species sighted: CANADA GEESE
(see Common Species List on reverse)

b. How many in each group?:

Age		Sex	
<input checked="" type="checkbox"/> 4	Adult	<input checked="" type="checkbox"/> 2	Male
<input type="checkbox"/>	Sub-Adult	<input checked="" type="checkbox"/> 2	Female
<input checked="" type="checkbox"/> 10	Yearling / newborn	<input type="checkbox"/>	Unknown
<input type="checkbox"/>	Unknown		

2. When was the sighting?

a. Date (MM/DD/YY): 07 23 2019

b. Time (exact or approximate): 08435



Day



Night



Dusk



Dawn

c. Description (e.g. any notes on species, size, color, antlers, etc.): 4 ADULTS / 10 GOOSINGS WITH YELLOW/KHAKI DOWN STILL, NO FEATHERS YET.

d. Behaviour - Please provide a description of the animals' behaviour. What was it / were they doing? How long? etc. GRAZING ALONG LAKE SHORE MOVING UPWIND AS A GROUP.

e. Was the individual / group sighted over a period of time? ☒ Yes ☐ No If so, for how long? + 30 min

f. Was any action taken? ☐ Yes ☒ No If so, what? _____

3. Where was the sighting?

a. GPS Coordinates: 66° 39' 31" N 91° 33' 11" W

b. Datum: NAD83

c. Was sighting within camp? ☐ Yes ☒ No

d. If not, how far from camp boundary? AT WATER PUMP ON LAKE SHORE

e. Please describe the location (e.g. "on hill next to cook's tent"), as well as the direction the wildlife was traveling:

ON LAKE SHORE

4. Weather Conditions:

Snowfall



Light



Moderate



Heavy

Wind



Breeze



Moderate



Strong

Rainfall



Light



Moderate



Heavy

Sky



Clear Sky



Partly Cloudy



Overcast

Recent Conditions: AFTER RAIN DURING NIGHT.

f. Was a photo taken? ☐ Yes ☒ No

Photo (file) name/number: _____

Observed by: P. SCHOEMAN

Incidental Wildlife Sighting / Sign Form
(please fill in as much information as possible)



NORTHCOUNTRYGOLD
NCG-TSX-V

(space is provided on the reverse for an illustration of the wildlife's location and activity along with additional space for notes and/or a description of the wildlife "sign" observed)

1. What was sighted?

a. Species sighted: CARIBOU
(see Common Species List on reverse)

b. How many in each group?: 1

Age

<input checked="" type="checkbox"/>
<input type="checkbox"/>
<input type="checkbox"/>
<input type="checkbox"/>

Adult

Sub-Adult

Yearling / newborn

Unknown

Sex

<input type="checkbox"/>
<input checked="" type="checkbox"/>
<input type="checkbox"/>

Male

Female

Unknown

2. When was the sighting?

a. Date (MM/DD/YY): 07/24/19

b. Time (exact or approximate): 11:00AM

☒

Day

☐

Night

☐

Dusk

☐

Dawn

c. Description (e.g. any notes on species, size, color, antlers, etc.): BROWNISH

d. Behaviour - Please provide a description of the animals' behaviour. What was it / were they doing? How long? etc.

WANDERING AROUND

e. Was the individual / group sighted over a period of time? ☒ Yes ☐ No If so, for how long? 1 HOUR

f. Was any action taken? ☐ Yes ☒ No If so, what? _____

3. Where was the sighting?

a. GPS Coordinates: 19RG-008 b. Datum: _____

c. Was sighting within camp? ☐ Yes ☒ No d. If not, how far from camp boundary? _____

e. Please describe the location (e.g. "on hill next to cook's tent"), as well as the direction the wildlife was traveling:

4. Weather Conditions:

Snowfall

<input type="checkbox"/>
<input type="checkbox"/>
<input type="checkbox"/>

Light

Moderate

Heavy

Rainfall

<input type="checkbox"/>
<input type="checkbox"/>
<input type="checkbox"/>

Light

Moderate

Heavy

Wind

<input type="checkbox"/>
<input checked="" type="checkbox"/>
<input type="checkbox"/>

Breeze

Moderate

Strong

Sky

<input type="checkbox"/>
<input type="checkbox"/>
<input type="checkbox"/>

Clear Sky

Partly Cloudy

Overcast

Recent Conditions: _____

f. Was a photo taken? ☐ Yes ☒ No

Photo (file) name/number: _____

Observed by: _____

Incidental Wildlife Sighting / Sign Form
(please fill in as much information as possible)



NORTHCOUNTRYGOLD
NCG: T5X-V

(space is provided on the reverse for an illustration of the wildlife's location and activity along with additional space for notes and/or a description of the wildlife "sign" observed)

1. What was sighted?

a. Species sighted: Caribou
(see Common Species List on reverse)

b. How many in each group?:

Age		Sex	
<input type="checkbox"/>	Adult	<input checked="" type="checkbox"/>	Male
<input checked="" type="checkbox"/>	Sub-Adult	<input type="checkbox"/>	Female
<input type="checkbox"/>	Yearling / newborn	<input type="checkbox"/>	Unknown
<input type="checkbox"/>	Unknown		

2. When was the sighting?

a. Date (MM/DD/YY): 07-26-19

b. Time (exact or approximate): 10:45PM

<input checked="" type="checkbox"/>	<input type="checkbox"/>	<input type="checkbox"/>	<input type="checkbox"/>
Day	Night	Dusk	Dawn

c. Description (e.g. any notes on species, size, color, antlers, etc.): Rack Antler Brown

d. Behaviour - Please provide a description of the animals' behaviour. What was it / were they doing? How long? etc.
Resting Beside Runway STRIP

e. Was the individual / group sighted over a period of time? ☒ Yes ☐ No If so, for how long? 3 days

f. Was any action taken? ☒ Yes ☒ No If so, what? _____

3. Where was the sighting?

a. GPS Coordinates: N/E OF GEN SHACK

b. Datum: _____

c. Was sighting within camp? ☒ Yes ☐ No

d. If not, how far from camp boundary? _____

e. Please describe the location (e.g. "on hill next to cook's tent"), as well as the direction the wildlife was traveling:

Caribou Resting
On Sand Behind
Gen Shack, Beside
Run way STRIP

4. Weather Conditions:

Snowfall	<input type="checkbox"/> Light <input type="checkbox"/> Moderate <input type="checkbox"/> Heavy	Rainfall	<input type="checkbox"/> Light <input type="checkbox"/> Moderate <input type="checkbox"/> Heavy
Wind	<input checked="" type="checkbox"/> Breeze <input type="checkbox"/> Moderate <input type="checkbox"/> Strong	Sky	<input type="checkbox"/> Clear Sky <input checked="" type="checkbox"/> Partly Cloudy <input type="checkbox"/> Overcast

Recent Conditions: _____

f. Was a photo taken? ☐ Yes ☒ No

Photo (file) name/number: _____

Observed by: KENNETH

Incidental Wildlife Sighting / Sign Form

(please fill in as much information as possible)



NORTHCOUNTRYGOLD
NCG: TSX-V

(space is provided on the reverse for an illustration of the wildlife's location and activity along with additional space for notes and/or a description of the wildlife "sign" observed)

1. What was sighted?

a. Species sighted: CANADA GOOSE
(see Common Species List on reverse)

b. How many in each group?:

Age	Sex
<input checked="" type="checkbox"/> 8 Adult	<input type="checkbox"/> Male
<input type="checkbox"/> Sub-Adult	<input type="checkbox"/> Female
<input checked="" type="checkbox"/> 17 Yearling / newborn	<input type="checkbox"/> Unknown
<input type="checkbox"/> Unknown	

2. When was the sighting?

a. Date (MM/DD/YY): 07 26 2019

b. Time (exact or approximate): 087H00

<input checked="" type="checkbox"/> Day	<input type="checkbox"/> Night	<input type="checkbox"/> Dusk	<input type="checkbox"/> Dawn
---	--------------------------------	-------------------------------	-------------------------------

c. Description (e.g. any notes on species, size, color, antlers, etc.): THE GOOSINGS WERE IN ABOUT 3 STAGES OF DEVELOPMENT.

d. Behaviour - Please provide a description of the animals' behaviour. What was it / were they doing? How long? etc.
GRAZING / SWIMMING IN SHALLOW POND BETWEEN SANDSPIT LAKE & UNNAMED LAKE N OF IT.

e. Was the individual / group sighted over a period of time? ☒ Yes ☐ No If so, for how long? 130min

f. Was any action taken? ☐ Yes ☒ No If so, what? _____

3. Where was the sighting?

a. GPS Coordinates: 66° 39' 31" N 91° 33' 11" W

b. Datum: NAD83

c. Was sighting within camp? ☐ Yes ☒ No

d. If not, how far from camp boundary? N OF WATER PUMP ALONG LAKE SHORE & INTO POND N OF LAKE

e. Please describe the location (e.g. "on hill next to cook's tent"), as well as the direction the wildlife was traveling:

ON LAKE SHORE & N INTO SMALL POND BETWEEN LAKES.

4. Weather Conditions:

Snowfall	<input type="checkbox"/> Light <input type="checkbox"/> Moderate <input type="checkbox"/> Heavy	Rainfall	<input type="checkbox"/> Light <input type="checkbox"/> Moderate <input type="checkbox"/> Heavy
Wind	<input checked="" type="checkbox"/> Breeze <input type="checkbox"/> Moderate <input type="checkbox"/> Strong	Sky	<input type="checkbox"/> Clear Sky <input checked="" type="checkbox"/> Partly Cloudy <input type="checkbox"/> Overcast

Recent Conditions: DRIZZLE PREV EVENING

f. Was a photo taken? ☐ Yes ☒ No

Photo (file) name/number: _____

Observed by: P. SCHOEMAN

(SEE 1d)

Incidental Wildlife Sighting / Sign Form

(please fill in as much information as possible)



NORTHCOUNTRYGOLD
NCG: TSX-V

(space is provided on the reverse for an illustration of the wildlife's location and activity along with additional space for notes and/or a description of the wildlife "sign" observed)

1. What was sighted?

a. Species sighted: CARIBOU
(see Common Species List on reverse)

b. How many in each group?:

Age		Sex	
<input checked="" type="checkbox"/> 2 Adult		<input checked="" type="checkbox"/> Male	
<input type="checkbox"/> Sub-Adult		<input type="checkbox"/> Female	
<input type="checkbox"/> Yearling / newborn		<input type="checkbox"/> Unknown	
<input type="checkbox"/> Unknown			

2. When was the sighting?

a. Date (MM/DD/YY): 07/31/19

b. Time (exact or approximate): 12:30

<input checked="" type="checkbox"/>	<input type="checkbox"/>	<input type="checkbox"/>	<input type="checkbox"/>
Day	Night	Dusk	Dawn

c. Description (e.g. any notes on species, size, color, antlers, etc.): looked healthy, lots of meat on the bones.

d. Behaviour - Please provide a description of the animals' behaviour. What was it / were they doing? How long? etc.
grazing, calm, moving along drainage area with abundant long grass.

e. Was the individual / group sighted over a period of time? ☐ Yes ☒ No If so, for how long? _____

f. Was any action taken? ☐ Yes ☒ No If so, what? _____

3. Where was the sighting?

a. GPS Coordinates: _____ b. Datum: _____

c. Was sighting within camp? ☒ Yes ☐ No d. If not, how far from camp boundary? _____

e. Please describe the location (e.g. "on hill next to cook's tent"), as well as the direction the wildlife was traveling:

drainage area up
good grazing along
North edge of occupied
area of camp

4. Weather Conditions:

Snowfall	<input type="checkbox"/> Light <input type="checkbox"/> Moderate <input type="checkbox"/> Heavy	Rainfall	<input type="checkbox"/> Light <input type="checkbox"/> Moderate <input type="checkbox"/> Heavy
Wind	<input type="checkbox"/> Breeze <input checked="" type="checkbox"/> Moderate <input type="checkbox"/> Strong	Sky	<input type="checkbox"/> Clear Sky <input type="checkbox"/> Partly Cloudy <input checked="" type="checkbox"/> Overcast

Recent Conditions: intermittent rain and high wind last few days.

f. Was a photo taken? ☐ Yes ☒ No

Photo (file) name/number: _____

Observed by: SEAD WILLIAMSON

Incidental Wildlife Sighting / Sign Form

(please fill in as much information as possible)



NORTHCOUNTRYGOLD
NCG:TSX-V

(space is provided on the reverse for an illustration of the wildlife's location and activity along with additional space for notes and/or a description of the wildlife "sign" observed)

1. What was sighted?

a. Species sighted: Caribou
(see Common Species List on reverse)

b. How many in each group?:

Age		Sex	
2	<input checked="" type="checkbox"/> Adult	2	<input checked="" type="checkbox"/> Male
	<input type="checkbox"/> Sub-Adult	1	<input checked="" type="checkbox"/> Female
1	<input checked="" type="checkbox"/> Yearling / newborn		<input type="checkbox"/> Unknown
	<input type="checkbox"/> Unknown		

2. When was the sighting?

a. Date (MM/DD/YY): 07/31/18

b. Time (exact or approximate): 11pm

<input type="checkbox"/>	<input checked="" type="checkbox"/>	<input type="checkbox"/>	<input type="checkbox"/>
Day	Night	Dusk	Dawn

c. Description (e.g. any notes on species, size, color, antlers, etc.): male, female and

d. Behaviour - Please provide a description of the animals' behaviour. What was it / were they doing? How long? etc.

Grazing on top of a hill

e. Was the individual / group sighted over a period of time? ☒ Yes ☐ No If so, for how long? ~2 hours

f. Was any action taken? ☐ Yes ☒ No If so, what? _____

3. Where was the sighting?

a. GPS Coordinates: Ar-luk b. Datum: _____

c. Was sighting within camp? ☐ Yes ☒ No d. If not, how far from camp boundary? ~15 miles

e. Please describe the location (e.g. "on hill next to cook's tent"), as well as the direction the wildlife was traveling:

on a hill ~400m from drill

4. Weather Conditions:

Snowfall	<input type="checkbox"/> Light	Rainfall	<input type="checkbox"/> Light
	<input type="checkbox"/> Moderate		<input type="checkbox"/> Moderate
	<input type="checkbox"/> Heavy		<input type="checkbox"/> Heavy
Wind	<input type="checkbox"/> Breeze	Sky	<input type="checkbox"/> Clear Sky
	<input checked="" type="checkbox"/> Moderate		<input type="checkbox"/> Partly Cloudy
	<input type="checkbox"/> Strong		<input checked="" type="checkbox"/> Overcast

Recent Conditions: _____

f. Was a photo taken? ☐ Yes ☒ No

Photo (file) name/number: _____

Observed by: Stephan

Incidental Wildlife Sighting / Sign Form

(please fill in as much information as possible)



NORTHCOUNTRYGOLD
NCG: 15X-V

(space is provided on the reverse for an illustration of the wildlife's location and activity along with additional space for notes and/or a description of the wildlife "sign" observed)

1. What was sighted?

a. Species sighted: Wolf.
(see Common Species List on reverse)

b. How many in each group?: ①

Age
☒ Adult
☐ Sub-Adult
☐ Yearling / newborn
☐ Unknown

Sex NOT KNOWN
☐ Male
☐ Female
☐ Unknown

2. When was the sighting?

a. Date (MM/DD/YY): 1 August 2019

b. Time (exact or approximate):

☒ Day ☐ Night ☐ Dusk ☐ Dawn

c. Description (e.g. any notes on species, size, color, antlers, etc.): White

d. Behaviour - Please provide a description of the animals' behaviour. What was it / were they doing? How long? etc.
RUNNING ON ROCK.

e. Was the individual / group sighted over a period of time? ☐ Yes ☒ No If so, for how long? _____

f. Was any action taken? ☐ Yes ☒ No If so, what? _____

3. Where was the sighting? 3 miles North of Camp.

a. GPS Coordinates: _____

b. Datum: _____

c. Was sighting within camp? ☐ Yes ☒ No

d. If not, how far from camp boundary? 3 miles.

e. Please describe the location (e.g. "on hill next to cook's tent"), as well as the direction the wildlife was traveling:

Near Tent Site
of IP crew

4. Weather Conditions:

Snowfall ☐ Light
☐ Moderate
☐ Heavy

Rainfall ☐ Light
☐ Moderate
☐ Heavy

Wind ☒ Breeze
☐ Moderate
☐ Strong

Sky ☒ Clear Sky
☐ Partly Cloudy
☐ Overcast

Recent Conditions: _____

f. Was a photo taken? ☐ Yes ☒ No

Photo (file) name/number: _____

Observed by: Brent Crossley

Incidental Wildlife Sighting / Sign Form
(please fill in as much information as possible)



NORTHCOUNTRYGOLD
NCG:TSX-V

(space is provided on the reverse for an illustration of the wildlife's location and activity along with additional space for notes and/or a description of the wildlife "sign" observed)

1. What was sighted?

a. Species sighted: Coati
(see Common Species List on reverse)

b. How many in each group?:

Age	Sex
<input checked="" type="checkbox"/> Adult	<input checked="" type="checkbox"/> Male
<input type="checkbox"/> Sub-Adult	<input type="checkbox"/> Female
<input type="checkbox"/> Yearling / newborn	<input type="checkbox"/> Unknown
<input type="checkbox"/> Unknown	

2. When was the sighting?

a. Date (MM/DD/YY): 08/04/19

b. Time (exact or approximate): 7:19 AM

<input checked="" type="checkbox"/>	<input type="checkbox"/>	<input type="checkbox"/>	<input type="checkbox"/>
Day	Night	Dusk	Dawn

c. Description (e.g. any notes on species, size, color, antlers, etc.): _____

d. Behaviour - Please provide a description of the animals' behaviour. What was it / were they doing? How long? etc.

It was laying down just on the other side of our pad
when we flew in and slowly walked off as we landed

e. Was the individual / group sighted over a period of time? ☐ Yes ☐ No If so, for how long? _____

f. Was any action taken? ☐ Yes ☐ No If so, what? _____

3. Where was the sighting?

a. GPS Coordinates: _____ b. Datum: _____

c. Was sighting within camp? ☐ Yes ☒ No d. If not, how far from camp boundary? AVSW 004

e. Please describe the location (e.g. "on hill next to cook's tent"), as well as the direction the wildlife was traveling:

Just downslope from patilly
constructed pad

4. Weather Conditions:

Snowfall	<input type="checkbox"/> Light <input type="checkbox"/> Moderate <input type="checkbox"/> Heavy	Rainfall	<input type="checkbox"/> Light <input type="checkbox"/> Moderate <input type="checkbox"/> Heavy
Wind	<input type="checkbox"/> Breeze <input checked="" type="checkbox"/> Moderate <input type="checkbox"/> Strong	Sky	<input type="checkbox"/> Clear Sky <input checked="" type="checkbox"/> Partly Cloudy <input type="checkbox"/> Overcast

Recent Conditions: _____

f. Was a photo taken? ☐ Yes ☐ No

Photo (file) name/number: _____

Observed by: Eli Tennent

Incidental Wildlife Sighting / Sign Form

(please fill in as much information as possible)



NORTHCOUNTRYGOLD
NCG:TSX-V

(space is provided on the reverse for an illustration of the wildlife's location and activity along with additional space for notes and/or a description of the wildlife "sign" observed)

1. What was sighted?

a. Species sighted: Caribou
(see Common Species List on reverse)

b. How many in each group?:

Age	Sex
<input checked="" type="checkbox"/> Adult	<input checked="" type="checkbox"/> Male
<input type="checkbox"/> Sub-Adult	<input type="checkbox"/> Female
<input type="checkbox"/> Yearling / newborn	<input type="checkbox"/> Unknown
<input type="checkbox"/> Unknown	

2. When was the sighting?

a. Date (MM/DD/YY): all season

b. Time (exact or approximate): most days

<input checked="" type="checkbox"/> Day	<input checked="" type="checkbox"/> Night	<input checked="" type="checkbox"/> Dusk	<input checked="" type="checkbox"/> Dawn
---	---	--	--

c. Description (e.g. any notes on species, size, color, antlers, etc.):

Healthy males w/ velvet antlers
transitioning to hard antlers

d. Behaviour - Please provide a description of the animals' behaviour. What was it / were they doing? How long? etc.

living in and around camp

e. Was the individual / group sighted over a period of time? ☒ Yes ☐ No If so, for how long? entire season

f. Was any action taken? ☒ Yes ☐ No If so, what?

occasional ushering away from
airstrip when planes incoming

3. Where was the sighting?

a. GPS Coordinates: Hayes Camp

b. Datum: _____

c. Was sighting within camp? ☒ Yes ☐ No

d. If not, how far from camp boundary? _____

e. Please describe the location (i.e. "on hill next to cook's tent"), as well as the direction the wildlife was traveling:

in and around camp

4. Weather Conditions:

Snowfall	<input type="checkbox"/> Light <input type="checkbox"/> Moderate <input type="checkbox"/> Heavy	Rainfall	<input type="checkbox"/> Light <input type="checkbox"/> Moderate <input type="checkbox"/> Heavy
Wind	<input type="checkbox"/> Breeze <input type="checkbox"/> Moderate <input type="checkbox"/> Strong	Sky	<input type="checkbox"/> Clear Sky <input type="checkbox"/> Partly Cloudy <input type="checkbox"/> Overcast

Recent Conditions: all conditions.

f. Was a photo taken? ☒ Yes ☐ No

Photo (file) name/number: multiple

Observed by: Hayes Crew