



## **NIRB Application for Screening #125501**

### **Iqaluit 2019 Emergency Water Supply Project**

**Application Type:** New

**Project Type:** Water

**Application Date:** 1/15/2020 5:49:12 PM

**Period of operation:** from 0001-01-01 to 0001-01-01

**Proposed Authorization:** from 0001-01-01 to 0001-01-01

**Project Proponent:** Matthew Hamp  
City of Iqaluit  
City of Iqaluit Box 460  
Iqaluit Nunavut X0A0H0  
Canada  
Phone Number:: (867) 979-5653, Fax Number::

## DETAILS

### Non-technical project proposal description

English: The City of Iqaluit is applying to amend water licence 3AM-IQA1626 on an emergency basis to allow supplementation of Lake Geraldine Reservoir from the Niaqunguk (Apex River) and Unnamed Lake in 2019. The scope of activities including the construction of an access trail from the Road to Nowhere to Unnamed Lake including the installation of culverts; construction of a semi-permanent pipeline from Niaqunguk (Apex) River to Lake Geraldine; mobilization, operation, maintenance and demobilization of equipment and infrastructure (except semi-permanent pipeline), to Niaqunguk (Apex) River and Unnamed Lake pumping sites; installation and operation of temporary pumps and a pipeline approximately 1.2 kilometres (km) to transfer water from Unnamed Lake to the Niaqunguk (Apex) River; temporary withdrawal (August 2019-October 2019) of up to 700,000 cubic metres (m3) of water from Unnamed Lake; withdrawal of up to 700,000 m3 water from the Niaqunguk (Apex) River; increase in the total amount of water allowed to be withdrawn from Lake Geraldine, from 1,100,000 m3/year to 2,000,000 m3/year; conduct research on depth, waterflow and water quality in Unnamed lake; and monitor project activities in accordance with an Operational Monitoring Plan, to maintain compliance with the City of Iqaluit's Type "A" Water Licence 3AM-IQA1626 (Amendment No. 3) and with advice provided by DFO in a Letter of Advice (19-HCAA-00969).

French: Not Available

Inuktitut: Not Available

Inuinnaqtun: Not Available

### Personnel

Personnel on site: 0

Days on site: 0

Total Person days: 0

Operations Phase: from 2019-08-15 to 2019-09-21

## Activities

Location	Activity Type	Land Status	Site history	Site archaeological or paleontological value	Proximity to the nearest communities and any protected areas
Pipeline from Unnamed Lake to Niaqungauk (Apex) River	Other	Commissioners	Unknown	Unknown	Iqaluit
Pipeline from Niaqungauk (Apex) River to Lake Geraldine Reservoir	Other	Commissioners	Unknown	Unknown	Iqaluit

## Community Involvement & Regional Benefits

Community	Name	Organization	Date Contacted
Information is not available			

## Authorizations

Indicate the areas in which the project is located:

South Baffin

### Authorizations

Regulatory Authority	Authorization Description	Current Status	Date Issued / Applied	Expiry Date
Nunavut Water Board	Amendment 003 to Type A Water Licence 3AM-IQA1626 - Emergency Undertaking	Active	2019-08-09	

### Project transportation types

Transportation Type	Proposed Use	Length of Use
Air	Helicopter	
Land	ATV	

### Project accomodation types

Community

## Material Use

Equipment to be used (including drills, pumps, aircraft, vehicles, etc)

Equipment Type	Quantity	Size - Dimensions	Proposed Use
Information is not available			

## Detail Fuel and Hazardous Material Use

Detail fuel material use:	Fuel Type	Number of containers	Container Capacity	Total Amount	Units	Proposed Use
Information is not available						

## Water Consumption

Daily amount (m3)	Proposed water retrieval methods	Proposed water retrieval location
700	The City proposes to withdraw water from the Unnamed Lake and transfer it approximately 1.5 km via flexible hoses into the Apex River at a location approximately 2.3 km upstream.	Apex River Pump location water is then withdrawn and conveyed by pipeline to Lake Geraldine

# Waste

## Waste Management

Project Activity	Type of Waste	Projected Amount Generated	Method of Disposal	Additional treatment procedures
Information is not available				

## Environmental Impacts:

See attached supporting documents.

# **Additional Information**

**SECTION A1: Project Info**

**SECTION A2: Allweather Road**

**SECTION A3: Winter Road**

**SECTION B1: Project Info**

**SECTION B2: Exploration Activity**

**SECTION B3: Geosciences**

**SECTION B4: Drilling**

**SECTION B5: Stripping**

**SECTION B6: Underground Activity**

**SECTION B7: Waste Rock**

**SECTION B8: Stockpiles**

**SECTION B9: Mine Development**

**SECTION B10: Geology**

**SECTION B11: Mine**

**SECTION B12: Mill**

**SECTION C1: Pits**

**SECTION D1: Facility**

**SECTION D2: Facility Construction**

**SECTION D3: Facility Operation**

**SECTION D4: Vessel Use**

**SECTION E1: Offshore Survey**

**SECTION E2: Nearshore Survey**

**SECTION E3: Vessel Use**

**SECTION F1: Site Cleanup**

**SECTION G1: Well Authorization**

**SECTION G2: Onland Exploration**

**SECTION G3: Offshore Exploration**

**SECTION G4: Rig**

**SECTION H1: Vessel Use**

**SECTION H2: Disposal At Sea**

**SECTION I1: Municipal Development**

**Description of Existing Environment: Physical Environment**

**Description of Existing Environment: Biological Environment**

**Description of Existing Environment: Socio-economic Environment**

**Miscellaneous Project Information**

**Identification of Impacts and Proposed Mitigation Measures**

**Cumulative Effects**



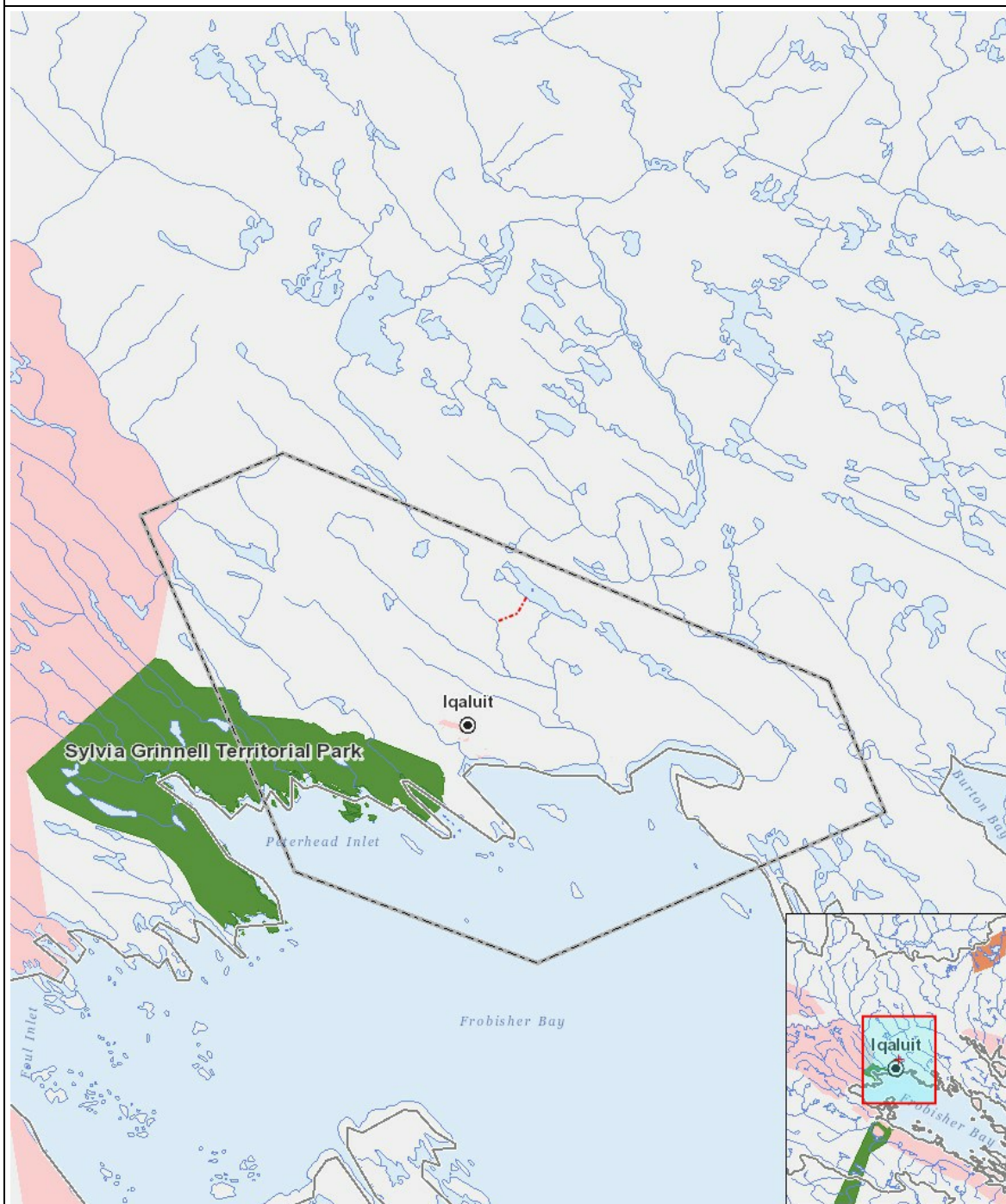
# Impacts

## Identification of Environmental Impacts

		PHYSICAL	Designated environmental areas	Ground stability	Permafrost	Hydrology / Limnology	Water quality	Climate conditions	Eskers and other unique or fragile landscapes	Surface and bedrock geology	Sediment and soil quality	Tidal processes and bathymetry	Air quality	Noise levels	BIOLOGICAL	Vegetation	Wildlife, including habitat and migration patterns	Birds, including habitat and migration patterns	Aquatic species, incl. habitat and migration/spawning	Wildlife protected areas	SOCIO-ECONOMIC	Archaeological and cultural historic sites	Employment	Community wellness	Community infrastructure	Human health
<b>Construction</b>																										
-		-	-	-	-	-	-	-	-	-	-	-	-	-		-	-	-	-	-		-	-	-	-	-
<b>Operation</b>																										
-		-	-	-	-	-	-	-	-	-	-	-	-	-		-	-	-	-	-		-	-	-	-	-
<b>Decommissioning</b>																										
-		-	-	-	-	-	-	-	-	-	-	-	-	-		-	-	-	-	-		-	-	-	-	-

(P = Positive, N = Negative and non-mitigatable, M = Negative and mitigatable, U = Unknown)

## Project Location



## List of Project Geometries

- |   |          |   |
|---|----------|---|
| 1 | polyline | Pipeline from Unnamed Lake to Niaqungauk (Apex) River             |
| 2 | polyline | Pipeline from Niaqungauk (Apex) River to Lake Geraldine Reservoir |