

ᄢᆞᆫ ᄡᆞᆯ ᄠᆞᆫ:

New

ᄢᆞᆫ ᄡᆞᆯ ᄠᆞᆫ:

 ΔL^{56}

ᐅᑦᓂᕈᖅ ᐃᑦᒃᓴᐅᐱᐸᐅᑦ: 1/15/2020 5:49:12 PM

Period of operation: from 0001-01-01 to 0001-01-01

ᠪᠠᠳᠤᠨᠲᠦᠭᠡᠢᠰᠦᠨ: from 0001-01-01 to 0001-01-01

Λαμβάνονται υπόψη:

Matthew Hamp

City of Iqaluit

City of Iqaluit Box 460

Iqaluit Nunavut X0A0H0

Canada

ᐃᓴᓐᓇᐃᓐᓇ: (867) 979-5653, ᓴᓐᓇᓴᓐᓇ:

$\epsilon_b \Delta^c \dot{\gamma} \Pi \sigma^b$ $\Lambda_{\text{C}} \sim \Delta^{\epsilon_b} \epsilon_{\sigma} \Delta^{\alpha_L} L^{\alpha} \sigma^b$

▷ΔΛΠ▷^c: Not Available

Inuinnaqtun: Not Available

Personnel on site: 0

Days on site: 0

Total Person days: 0

Operations Phase: from 2019-08-15 to 2019-09-21

Λϵ⋈⋈⋈σ⋈⁹⁶⋈^c

ᐃ ᑭ	ᖃᓄᐱᑦᑐᒥᑦ ᐱᑕᓚᐳᖃᖅᓂᐳᖅᑕ	ᑭᖅᐳᑦ ᓄᐱᖅᐳᑦ	ᑐᔨᐳᒪᓴᖅᑕ ᓄᐱᐳᑦ ᖃᓄᖅ ᐳᑐᒪᐳᑕᐳᖅᑭᒪᓴᓚᐳᖅᑕᓂᖅ	ᐱᑦᔨᖅᓂᑦᖃᖅᐱᐳᑕᑕᐳᖅᑕ ᐱᓄᓄᑦ ᐱᔨᖅᑕᐳᖅᑕᑦᓂᐳᑕᑕᑕ ᑕᐱᑦᑭᒪᓂᑐᖅᐳᑕᖅᑐᖅ	ᖃᓂᓂᖅᑕᑦᑕᑦ ᓄᐱᑕᑭᓴᐳᑕᑦᑕᑦ ᐳᒪᓂ ᔨᑐᑦᑭᖅᑭᐱᐳᑕᑕ ᑭᐱᓄᑦ
Pipeline from Unnamed Lake to Niaqungauk (Apex) River	Other	Commissioners	Unknown	Unknown	Iqaluit
Pipeline from Niaqungauk (Apex) River to Lake Geraldine Reservoir	Other	Commissioners	Unknown	Unknown	Iqaluit

[illegible]

ደረጃ ^፭	ሰራተኛ	ጋራ የሰራተኞች ብዛት ^፭	ፍጥነት የሰራተኞች ብዛት ^፭
Information is not available			

$\epsilon \Delta^{\alpha} j^{\beta} \wedge J^{\alpha} e^{\beta} \dot{N} \quad d^{\alpha} r^{\beta} C D P L \dot{L}^{\beta}$

உரிமையாளர் அல்லது அங்கீகரிக்கப்பட்ட நபர்:

South Baffin

$\epsilon \Delta^{\frac{1}{2}} r^c \wedge J^{\frac{1}{2}} e_D \dot{n} \lrcorner R^{\frac{1}{2}} C D P L \dot{r}^c$

[illegible]

Project transportation types

Transportation Type	Vehicle	Length of Use
Air	Helicopter	
Land	ATV	

Project accomodation types

മെൻ്റൽ

◀▷↳◀⁹⁶▷⁹⁶

Λ⁹d^c d⁸r²_z^{9b} d⁷bcdσd⁶s²_z^{9b} Δ⁶b²p²n³o³r^c ΔjCΔ^c, Γ^c→dPñ^c, ^{9b}b²LCr^{9b}, μερD^c d⁸r⁸r^c→

ᐃᖅᓴᑦᐱᖅ ᐱᖅᑯᑦ ᐃᐳᒐᐁᑦ ᐃᖅᑐᖅ ᖅᓄᐃᑦᑐᑦᓴᒐ	ᖅᑲᑦᓴᑦᐃᑦ	ᐃᖅᓴᑦᓴᑦ - > ᖅᑐᑦᓴᑦ	ᓴᐱᑦ ᐃᐳᒐᐁᑦᐃᖅ<
Information is not available			

[illegible]

<p>ᠠᠨᠠᠵᠤ</p> <p>ᠠᠨᠠᠵᠤ ᠠᠨᠠᠵᠤ ᠠᠨᠠᠵᠤ</p> <p>ᠠᠨᠠᠵᠤ ᠠᠨᠠᠵᠤ ᠠᠨᠠᠵᠤ</p>	<p>ᠠᠨᠠᠵᠤ ᠠᠨᠠᠵᠤ ᠠᠨᠠᠵᠤ</p> <p>ᠠᠨᠠᠵᠤ ᠠᠨᠠᠵᠤ ᠠᠨᠠᠵᠤ</p> <p>ᠠᠨᠠᠵᠤ ᠠᠨᠠᠵᠤ ᠠᠨᠠᠵᠤ</p>	<p>ᠠᠨᠠᠵᠤ ᠠᠨᠠᠵᠤ ᠠᠨᠠᠵᠤ</p> <p>ᠠᠨᠠᠵᠤ ᠠᠨᠠᠵᠤ ᠠᠨᠠᠵᠤ</p> <p>ᠠᠨᠠᠵᠤ ᠠᠨᠠᠵᠤ ᠠᠨᠠᠵᠤ</p>	<p>ᠠᠨᠠᠵᠤ ᠠᠨᠠᠵᠤ ᠠᠨᠠᠵᠤ</p> <p>ᠠᠨᠠᠵᠤ ᠠᠨᠠᠵᠤ ᠠᠨᠠᠵᠤ</p> <p>ᠠᠨᠠᠵᠤ ᠠᠨᠠᠵᠤ ᠠᠨᠠᠵᠤ</p>	<p>ᠠᠨᠠᠵᠤ ᠠᠨᠠᠵᠤ ᠠᠨᠠᠵᠤ</p> <p>ᠠᠨᠠᠵᠤ ᠠᠨᠠᠵᠤ ᠠᠨᠠᠵᠤ</p> <p>ᠠᠨᠠᠵᠤ ᠠᠨᠠᠵᠤ ᠠᠨᠠᠵᠤ</p>	<p>ᠠᠨᠠᠵᠤ ᠠᠨᠠᠵᠤ ᠠᠨᠠᠵᠤ</p> <p>ᠠᠨᠠᠵᠤ ᠠᠨᠠᠵᠤ ᠠᠨᠠᠵᠤ</p> <p>ᠠᠨᠠᠵᠤ ᠠᠨᠠᠵᠤ ᠠᠨᠠᠵᠤ</p>	<p>ᠠᠨᠠᠵᠤ ᠠᠨᠠᠵᠤ ᠠᠨᠠᠵᠤ</p> <p>ᠠᠨᠠᠵᠤ ᠠᠨᠠᠵᠤ ᠠᠨᠠᠵᠤ</p> <p>ᠠᠨᠠᠵᠤ ᠠᠨᠠᠵᠤ ᠠᠨᠠᠵᠤ</p>
Information is not available						

$$\Delta L^{\epsilon_b} \quad \triangleleft \triangleright^{\epsilon_b} C \triangleright \triangleleft \dot{L}^{\epsilon_b} \triangleright^{\epsilon_b}$$

$\Delta^c \rightarrow C\dot{L}^{fb} \rightarrow D^{fb}CD_{\sigma}\dot{\Delta}^{fb})^{fb}$	$^{fb}\omega^{fb} \Delta\Gamma^{fb}C^{fb}C^{f}\sigma\dot{\Delta}^{fb}<^c$	$aP^c \Delta\Gamma^{fb}C^{fb}C^{f}\sigma\dot{\Delta}^{fb}<^c$
700	The City proposes to withdraw water from the Unnamed Lake and transfer it approximately 1.5 km via flexible hoses into the Apex River at a location approximately 2.3 km upstream.	Apex River Pump location water is then withdrawn and conveyed by pipeline to Lake Geraldine

Additional Information

SECTION A1: Project Info

SECTION A2: Allweather Road

SECTION A3: Winter Road

SECTION B1: Project Info

SECTION B2: Exploration Activity

SECTION B3: Geosciences

SECTION B4: Drilling

SECTION B5: Stripping

SECTION B6: Underground Activity

SECTION B7: Waste Rock

SECTION B8: Stockpiles

SECTION B9: Mine Development

SECTION B10: Geology

SECTION B11: Mine

SECTION B12: Mill

SECTION C1: Pits

SECTION D1: Facility

SECTION D2: Facility Construction

SECTION D3: Facility Operation

SECTION D4: Vessel Use

SECTION E1: Offshore Survey

SECTION E2: Nearshore Survey

SECTION E3: Vessel Use

SECTION F1: Site Cleanup

SECTION G1: Well Authorization

SECTION G2: Onland Exploration

SECTION G3: Offshore Exploration

SECTION G4: Rig

SECTION H1: Vessel Use

SECTION H2: Disposal At Sea

SECTION 11: Municipal Development

[illegible][illegible][illegible]

Miscellaneous Project Information

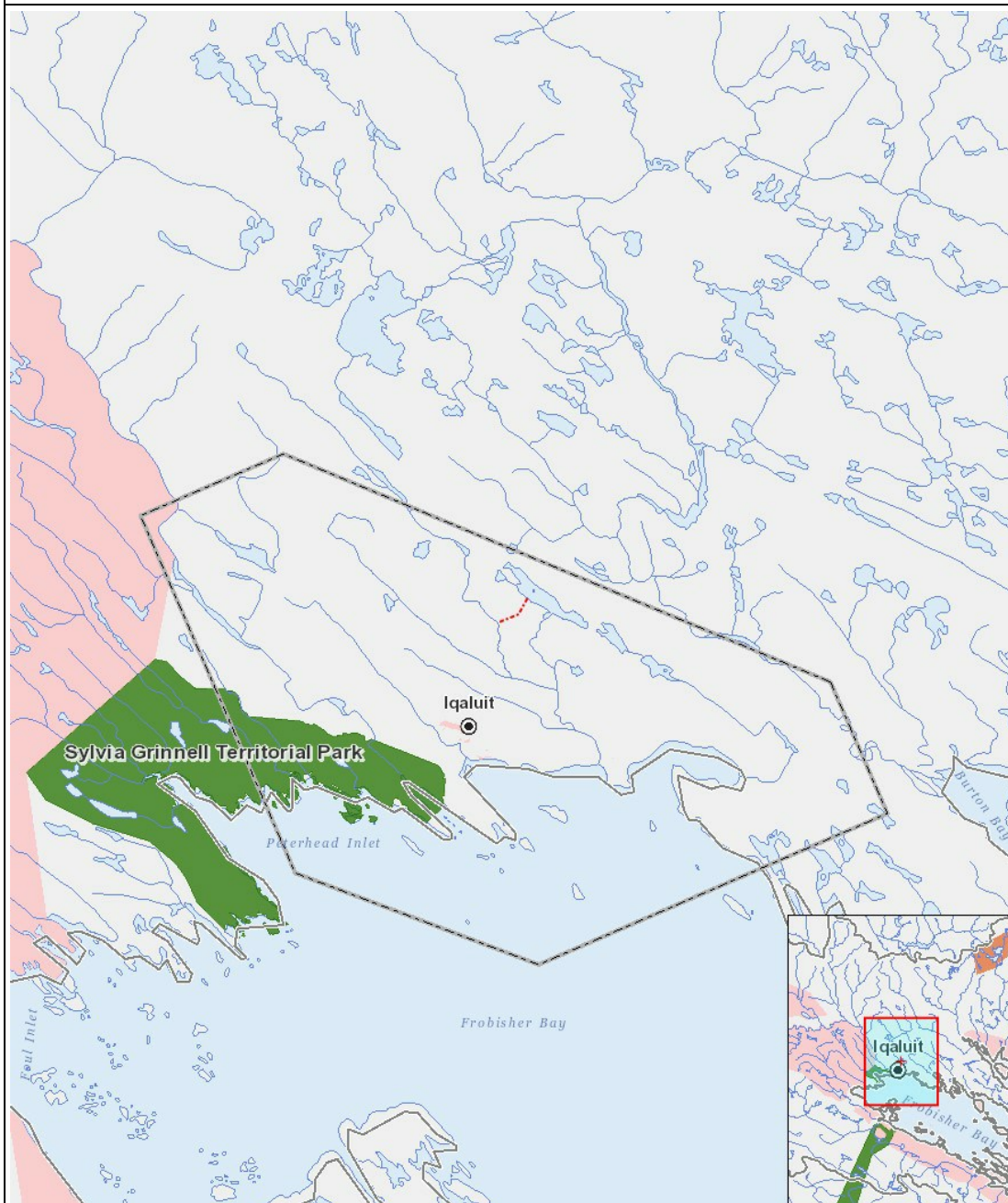
[illegible]

Cumulative Effects

Impacts

$\underline{e} \rightarrow e \Delta^{96} C D \sigma^{-96} r^C$ $\Delta^{96} n f D C \dot{\sigma}^C D^C$ $\Delta^{96} D^{96} C D r L \dot{r}^C$

[illegible]
$$(P = \langle \text{b d a p n r}^a \text{ e}^b \rangle^c, N = \langle \text{b d}^b \text{ r}^c \text{ d} \rangle^a \langle \text{e}^b \rangle^c \langle \text{c d} \rangle^a \langle \text{r}^b \rangle^c \langle \text{d} \rangle^a \langle \text{e}^b \rangle^c, M = \langle \text{b d}^b \text{ r}^c \text{ d} \rangle^a \langle \text{e}^b \rangle^c \langle \text{c d} \rangle^a \langle \text{r}^b \rangle^c \langle \text{d} \rangle^a \langle \text{e}^b \rangle^c, U = \langle \text{b d} \rangle^a \langle \text{r}^b \rangle^c \langle \text{e}^b \rangle^c)$$



List of Project Geometries

- 1 polyline Pipeline from Unnamed Lake to Niaqungauk (Apex) River
- 2 polyline Pipeline from Niaqungauk (Apex) River to Lake Geraldine Reservoir