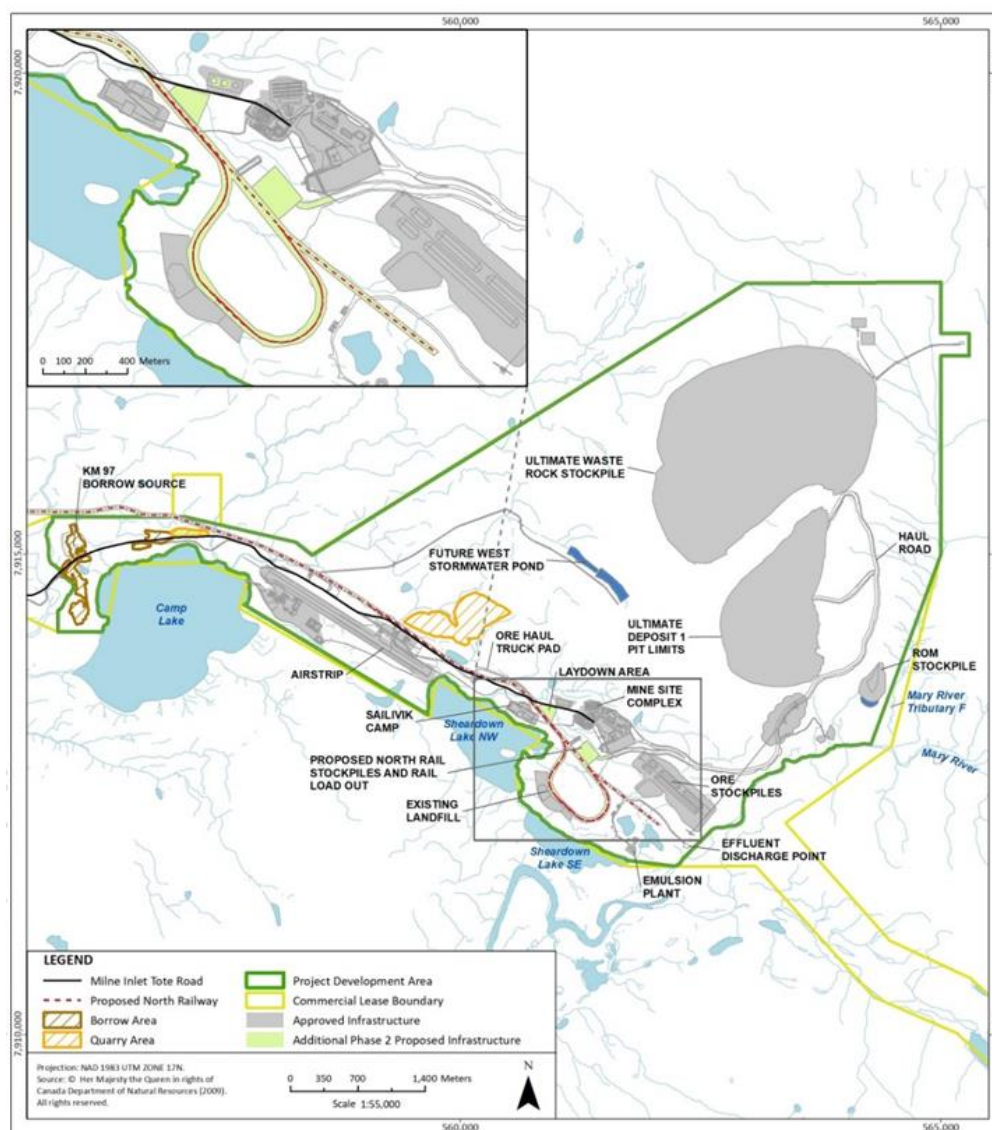


ᐅᓕᐱ ᐱᓕᐱᑦᓴᓚ ᐅᓯᓂᐱᐱᑦ ᓄᓇᐸᐅᓂᓴᐱ ᐱᓗᐱᓄᓂᐅᓂ

▷^c▷^j_c e Δ_c^c▷^c

ATV	ፌዴራል ልምድ ያለው ልማት ሙከራ ስራ (ፖሊስ፣ ዘርፍ ልማት)
DWT	ፓሪሊ ሙረር ርዕሰ ርዕሰ ሕግ
ERP	የወጪ ስራ ለማሳደግ የሚያስፈልገው የገንዘብ ሥጦታ
FEIS	የሕግ ስራ ለማሳደግ የሚያስፈልገው የገንዘብ ሥጦታ
HTO	ፓሪሊ ሙረር ስራ
IIBA	ልማት ስራ ለማሳደግ የሚያስፈልገው የገንዘብ ሥጦታ
Mtpa	ፖሊስ ርዕሰ ሕግ
MW	ፖሊስ ርዕሰ ሕግ (Megawatt)
NIRB	ፓሪሊ ሙረር ስራ
NWB-	ልማት ስራ ለማሳደግ የሚያስፈልገው የገንዘብ ሥጦታ
PD	ለሰራተኛው ስራ
PDA	ለሰራተኛው ስራ
ROM	ለሰራተኛው ስራ
TSO	ለሰራተኛው ስራ
VEC	ለሰራተኛው ስራ

[illegible]

2.1.1 $\nabla^a \Gamma^b \nabla^c \omega \wedge \nabla \rho \otimes \nabla \sigma^a$

በግሪክ ቅዱስ ሊቃውንት አርጋጥሮና ሄልዲ ያለው የፊደል

ፖዎታፊር ሜዳኒክ ርዕሰ ልገረኛ	ጋንጎናፊር ርዕሰ ልገረኛ	ፋኒክ ርዕሰ ልገረኛ
22.2 Mtpa (ፋፊልፊር ርዕሰ ልገረኛ) 24 Mtpa (ፋፊልፊር ርዕሰ ልገረኛ)	30 Mtpa	7.8 Mtpa 6 Mtpa

[illegible]

ፀብሐው ወደ ጋንታናል ባለፉት ስምንት ዓመቱ Steensby ልካል ነበር። በዚህ ለአስተያየት የሚችል አጠቃላይ መረጃ ማግኘት ሲቻል፡

[illegible][illegible]

2.1.2 $\langle \triangleright^{\text{sb}} C \triangleright \rangle \neg \langle \triangleright^{\text{sb}} D^{\text{sb}} \mid \text{P}^{\text{sb}} \text{C} \rightarrow \text{N} \sigma^{\text{s}} \rangle^{\text{c}} \triangleleft^{\text{LL}} \text{ma}^{\text{b}} \dot{\text{j}} \text{P} \text{N}^{\text{s}} \neg \triangleleft^{\text{c}} \triangleleft^{\text{s}} \text{d} \text{N}^{\text{s}} \sigma^{\text{c}} \triangleright \text{P}^{\text{sb}} \triangleright \Delta \sigma^{\text{sb}}$

[illegible]

ፖዎመጋር ፍፅላት ርዕሰ ጉዞ ልገገ	ጋንዳር ርዕሰ ጉዞ ልገገ	ፍፅላት ርዕሰ ጉዞ ልገገ
ፖዎመጋር ፍፅላት ርዕሰ ጉዞ ልገገ 18 Mtpa-መገንጠያ ርዕሰ ጉዞ ልገገ ፍፅላት ርዕሰ ጉዞ ልገገ	ፖዎመጋር ፍፅላት ርዕሰ ጉዞ ልገገ PDA ልገገ ርዕሰ ጉዞ ልገገ	ፖዎመጋር ፍፅላት ርዕሰ ጉዞ ልገገ ፍፅላት ርዕሰ ጉዞ ልገገ ፍፅላት ርዕሰ ጉዞ ልገገ

[illegible][illegible][illegible]

ለጥራትና ምልክታዊነት ልማትና የጥራት አስተዳደር ልማት ድጋፍ	የጥራት
ለጥራትና FEIS በጥራት ልማትና የጥራት ድጋፍ ልማት 2018-ፖ?	

2.1.3 ᐸᓕᓴᓂᓐ ᐱᓐᓴᓂᓐ

2.1.3.1 ᓂᓐᓕᓴᓂᓐ ᓄᓂᓴᓂᓐ

ᓂᓐᓕᓴᓂᓐ 2.3: ᓂᓐᓕᓴᓂᓐ ᓂᓐᓕᓴᓂᓐ ᓄᓂᓴᓂᓐ ᓄᓂᓴᓂᓐ

ᓂᓐᓕᓴᓂᓐ ᓄᓂᓴᓂᓐ ᓄᓂᓴᓂᓐ	ᓂᓐᓕᓴᓂᓐ ᓂᓐᓕᓴᓂᓐ	ᓂᓐᓕᓴᓂᓐ ᓄᓂᓴᓂᓐ
17 ML ᓂᓐᓕᓴᓂᓐ ᓄᓂᓴᓂᓐ 3 ML ᓂᓐᓕᓴᓂᓐ ᓄᓂᓴᓂᓐ 400,000 L ᓂᓐᓕᓴᓂᓐ ᓄᓂᓴᓂᓐ	47 ML ᓂᓐᓕᓴᓂᓐ ᓄᓂᓴᓂᓐ 3 ML ᓂᓐᓕᓴᓂᓐ ᓄᓂᓴᓂᓐ 400,000 L ᓂᓐᓕᓴᓂᓐ ᓄᓂᓴᓂᓐ	30 ML ᓂᓐᓕᓴᓂᓐ ᓄᓂᓴᓂᓐ

ᓂᓐᓕᓴᓂᓐ ᓄᓂᓴᓂᓐ ᓂᓐᓕᓴᓂᓐ ᓄᓂᓴᓂᓐ 17 ML ᓂᓐᓕᓴᓂᓐ ᓄᓂᓴᓂᓐ ᓄᓂᓴᓂᓐ. ᐸᓕᓴᓂᓐ ᓂᓐᓕᓴᓂᓐ ᓂᓐᓕᓴᓂᓐ, 30 ML-ᓂᓐᓕᓴᓂᓐ ᓂᓐᓕᓴᓂᓐ ᓄᓂᓴᓂᓐ ᓄᓂᓴᓂᓐ ᓄᓂᓴᓂᓐ.

ᓂᓐᓕᓴᓂᓐ ᓄᓂᓴᓂᓐ ᓂᓐᓕᓴᓂᓐ ᓂᓐᓕᓴᓂᓐ FEIS-ᓂᓐ, ᐸᓕᓴᓂᓐ ᓂᓐᓕᓴᓂᓐ ᓂᓐᓕᓴᓂᓐ ᓄᓂᓴᓂᓐ ᓄᓂᓴᓂᓐ (TSD-6), ᓂᓐᓕᓴᓂᓐ ᓂᓐᓕᓴᓂᓐ ᓄᓂᓴᓂᓐ ᓄᓂᓴᓂᓐ 1 ᓂᓐᓕᓴᓂᓐ ᓄᓂᓴᓂᓐ ᓄᓂᓴᓂᓐ.

ᐱᓕᓂᐸᓐ ᓄᓂᓴᓂᓐ ᓂᓐᓕᓴᓂᓐ ᓂᓐᓕᓴᓂᓐ ᓂᓐᓕᓴᓂᓐ ᓂᓐᓕᓴᓂᓐ ᓂᓐᓕᓴᓂᓐ	ᓂᓐᓕᓴᓂᓐ
------------------------------------------------	--------

2.1.3.2 ᓂᓐᓕᓴᓂᓐ ᓂᓐᓕᓴᓂᓐ

ᓂᓐᓕᓴᓂᓐ 2.4: ᓂᓐᓕᓴᓂᓐ ᓂᓐᓕᓴᓂᓐ ᓄᓂᓴᓂᓐ

ᓂᓐᓕᓴᓂᓐ ᓄᓂᓴᓂᓐ ᓄᓂᓴᓂᓐ	ᓂᓐᓕᓴᓂᓐ ᓄᓂᓴᓂᓐ	ᓂᓐᓕᓴᓂᓐ ᓄᓂᓴᓂᓐ
28 MW ᓂᓐᓕᓴᓂᓐ ᓄᓂᓴᓂᓐ	28 MW ᓂᓐᓕᓴᓂᓐ ᓄᓂᓴᓂᓐ	ᓂᓐᓕᓴᓂᓐ ᓄᓂᓴᓂᓐ

ᓂᓐᓕᓴᓂᓐ 1.35 ᓂᓐᓕᓴᓂᓐ (megawatt) (MW) ᓂᓐᓕᓴᓂᓐ ᓂᓐᓕᓴᓂᓐ ᓂᓐᓕᓴᓂᓐ ᓂᓐᓕᓴᓂᓐ ᓂᓐᓕᓴᓂᓐ 5.4 MW-ᓂᓐ (ᓂᓐᓕᓴᓂᓐ ᓂᓐᓕᓴᓂᓐ ᓂᓐᓕᓴᓂᓐ). ᓂᓐᓕᓴᓂᓐ ᓂᓐᓕᓴᓂᓐ ᓂᓐᓕᓴᓂᓐ 3.5 MW-ᓂᓐ ᓂᓐᓕᓴᓂᓐ ᓂᓐᓕᓴᓂᓐ 22 MW-ᓂᓐ ᓂᓐᓕᓴᓂᓐ ᓂᓐᓕᓴᓂᓐ ᓂᓐᓕᓴᓂᓐ Steensby-ᓂᓐ ᓂᓐᓕᓴᓂᓐ ᓂᓐᓕᓴᓂᓐ.

ᓂᓐᓕᓴᓂᓐ ᓂᓐᓕᓴᓂᓐ ᓂᓐᓕᓴᓂᓐ ᓂᓐᓕᓴᓂᓐ ᓂᓐᓕᓴᓂᓐ 23 MW-ᓂᓐ ᓂᓐᓕᓴᓂᓐ ᓂᓐᓕᓴᓂᓐ FEIS ᓂᓐᓕᓴᓂᓐ ᓂᓐᓕᓴᓂᓐ ᓂᓐᓕᓴᓂᓐ (TSD-7) ᓂᓐᓕᓴᓂᓐ ᓂᓐᓕᓴᓂᓐ ᓂᓐᓕᓴᓂᓐ ᓂᓐᓕᓴᓂᓐ VEC-ᓂᓐ (TSD-11).

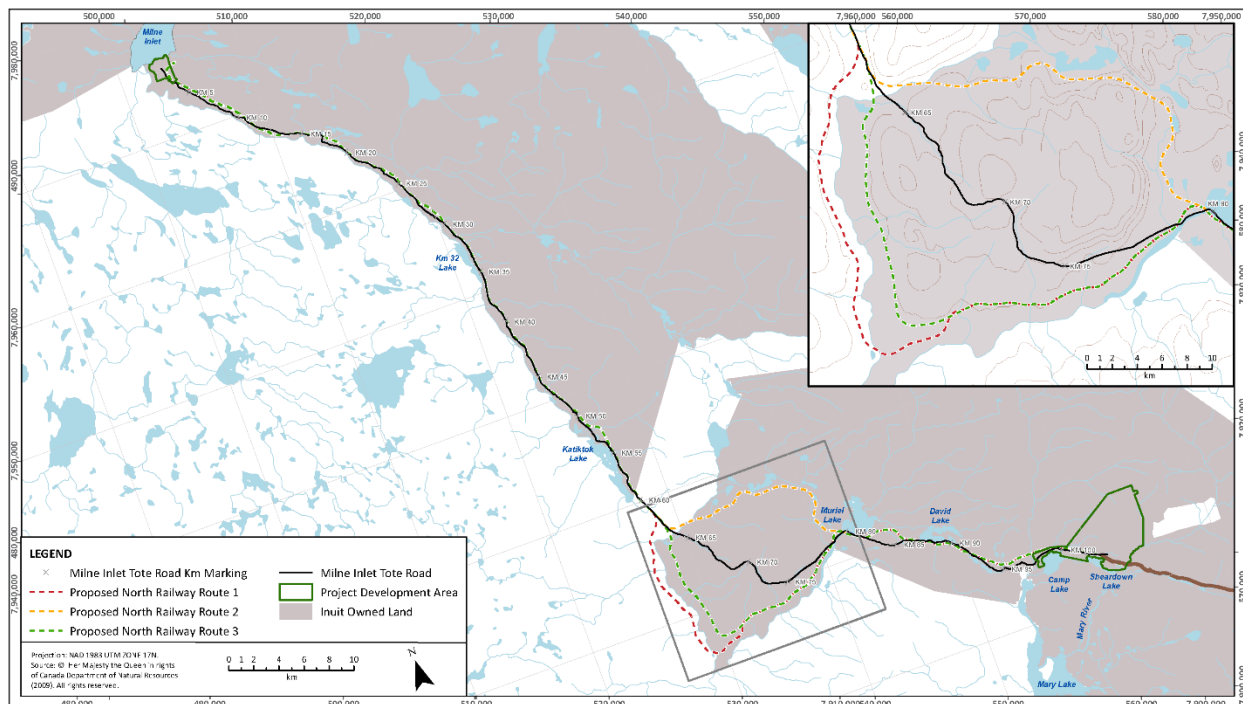
ᓂᓐᓕᓴᓂᓐ ᓂᓐᓕᓴᓂᓐ ᓂᓐᓕᓴᓂᓐ ᓂᓐᓕᓴᓂᓐ FEIS-ᓂᓐ ᓂᓐᓕᓴᓂᓐ ᓂᓐᓕᓴᓂᓐ ᓂᓐᓕᓴᓂᓐ ᓂᓐᓕᓴᓂᓐ ᓂᓐᓕᓴᓂᓐ ᓂᓐᓕᓴᓂᓐ.

ᐱᓕᓂᐸᓐ ᓄᓂᓴᓂᓐ ᓂᓐᓕᓴᓂᓐ ᓂᓐᓕᓴᓂᓐ ᓂᓐᓕᓴᓂᓐ ᓂᓐᓕᓴᓂᓐ	ᓂᓐᓕᓴᓂᓐ ᓂᓐᓕᓴᓂᓐ ᓂᓐᓕᓴᓂᓐ ᓂᓐᓕᓴᓂᓐ ᓂᓐᓕᓴᓂᓐ
-----------------------------------------	------------------------------------

2.2.2 $\triangleright \triangleleft^a a^b \sigma^c$ $\text{ma}^b \text{d}^c \text{p}^a \text{n}^b \text{r}^c \text{d}^c \text{r}^c \text{d}^c \text{p}^a$

[illegible]

ፖሎቲካዊ ምዕራፍ ርዕስ ርዕስ	ጋራ ርዕስ ርዕስ ርዕስ	ፍጥነት ርዕስ ርዕስ
ፖሎቲካዊ ምዕራፍ ርዕስ ርዕስ	ጋራ ርዕስ ርዕስ ርዕስ	ፍጥነት ርዕስ ርዕስ

[illegible][illegible][illegible]

- [illegible]

[illegible][illegible]

2.2.2.3 $\triangleleft^{\text{qb}} \rho \triangleright L \dot{\prec} \text{qb} \Delta^{\text{al}} \sigma^{\text{al}}$

[illegible][illegible][illegible]

2.2.2.4 $\Delta b^c \delta^c$

[illegible][illegible]

- [illegible]

- [illegible]

[illegible][illegible][illegible][illegible][illegible][illegible]

2.3 ຖ້າ Δ ບໍ່ເປັນ ສະກົດ

በጥንቅቅ 2.9: የዎላይታ ልዩ ልዩ ጥንቅቅ ይገለጻል

[illegible][illegible][illegible]

- [illegible]

- ᐸᓐᓕᓂᓐᓄᓐ/ᐸᓐᓕᓂᓐᓄᓐ ᐅᓐᓕᓂᓐᓄᓐ ᐅᓐᓕᓂᓐᓄᓐ, ᓄᐸᓐ ᐅᓐᓕᓂᓐᓄᓐ ᐃᓄᓂᓐᓄᓐ/ᐃᓄᓂᓐᓄᓐ ᐸᓐᓕᓂᓐᓄᓐ ᐱᓕᓂᐸᓐᓄᓐ ᐸᓐᓕᓂᓐᓄᓐ;
- ᐃᓄᓂᓐᓄᓐ ᐸᓐᓕᓂᓐᓄᓐ ᓄᓂᓐᓄᓐ ᐸᓐᓕᓂᓐᓄᓐ ᐱᓕᓂᐸᓐᓄᓐ ᐱᓐᓕᓂᓐᓄᓐ;
- ᐸᓐᓕᓂᓐᓄᓐ ᐸᓐᓕᓂᓐᓄᓐ ᐸᓐᓕᓂᓐᓄᓐ, ᐸᓐᓕᓂᓐᓄᓐ ᐸᓐᓕᓂᓐᓄᓐ;
- ᐸᓐᓕᓂᓐᓄᓐ ᐸᓐᓕᓂᓐᓄᓐ ᐸᓐᓕᓂᓐᓄᓐ;
- ᐸᓐᓕᓂᓐᓄᓐ ᐸᓐᓕᓂᓐᓄᓐ ᐸᓐᓕᓂᓐᓄᓐ ᐸᓐᓕᓂᓐᓄᓐ ᐸᓐᓕᓂᓐᓄᓐ;
- ᐃᓄᓂᓐᓄᓐ ᐸᓐᓕᓂᓐᓄᓐ ᐸᓐᓕᓂᓐᓄᓐ;
- ᐸᓐᓕᓂᓐᓄᓐ ᐸᓐᓕᓂᓐᓄᓐ ᐸᓐᓕᓂᓐᓄᓐ.

ᐸᓐᓕᓂᓐᓄᓐ ᐸᓐᓕᓂᓐᓄᓐ ᐸᓐᓕᓂᓐᓄᓐ ᐸᓐᓕᓂᓐᓄᓐ ᐸᓐᓕᓂᓐᓄᓐ 2.3-ᓄᓐ.



በበጌጌ 2.10: ደብዳቤውን ለማግኘት ለሚችሉት ሰነዶች ማረጋገጫ ማስገባት ለማስታወሻ ለሚችሉት ሰነዶች ማረጋገጫ ማስገባት

የግራፊክስ ምልክት ምርጫ	ግራፊክስ ምርጫ ግራፊክስ	ግራፊክስ ምርጫ ግራፊክስ
ግራፊክስ ምርጫ ግራፊክስ	ግራፊክስ ምርጫ ግራፊክስ	ግራፊክስ ምርጫ ግራፊክስ

[illegible]

2.3.2 $\triangleright \nabla \nabla^b C^{\nabla b} C \triangleright \nabla \nabla^c \Delta^b \nabla^c \Delta^b$

በጥንታዊ ኢትዮጵያ ልማት

የጋራ ስም አጠቃላይ መግለጫ	የጋራ ስም አጠቃላይ መግለጫ	የጋራ ስም አጠቃላይ መግለጫ
ጋራ ስም አጠቃላይ መግለጫ Supramax-ግ	ጋራ ስም አጠቃላይ መግለጫ Capesize	ጋራ ስም አጠቃላይ መግለጫ 6 Mtpa-ግ

[illegible][illegible]

<p>ለጥራቱ ምልክታዊ ልዩነቶች ልዩነቶች ርዕሰ ልማት ጋር</p> <p>ለጥራቱ ጋር FEIS በጥራቱ ልዩነቶች ጋር ርዕሰ ልማት 2018-ፖ?</p>	<p>ጋር.</p>
--------------------------------------------------------------------------------------------	------------

2.3.3 $\Delta_{\mathcal{C}} \Gamma \triangleright \Gamma^c \wedge \mathfrak{d} \dot{\Gamma}^c$

2.3.3.1 ԵՆԼՈՐՈՐ

[illegible]

- [illegible]

[illegible]

2.3.3.2 $\rho\sigma^b C^a \dot{\Delta}^c$

በበጌጌ 2.12: የዮሐንስ ልሳግ ገጽጽ ለገጽ ልሳግ ለገጽ

[illegible][illegible][illegible][illegible][illegible][illegible]

2.3.3.3 $\Delta^L \mathbb{L}^{q_b} \partial \cap \subset \Delta \mathbb{P} \cap$

[illegible][illegible]

7-መካከል 1.35 MW ስርዓቱን ይሰጣል፡፡ ለሌሎች ስርዓቶች ለሚገኙት ልዩ ልዩ ስርዓቶች፣ ለሚገኙት 6.75 MW-መካከል (ሌሎች ስርዓቶች ለሚገኙት ልዩ ልዩ ስርዓቶች)፡፡

[illegible][illegible][illegible]

[illegible]

2.3.3.4 $\triangleleft^b \subset d\mathcal{P}^e \Delta^b$

[illegible][illegible]

<p>ለጥራቱ ፍጻሜ ልረካታቸው ሳይሆኑ ርዕሰ ልማት ጋራ ለጥራቱ ፍጻሜ ልረካታቸው ሳይሆኑ ርዕሰ ልማት ጋራ</p> <p>ለጥራቱ ፍጻሜ ልረካታቸው ሳይሆኑ ርዕሰ ልማት ጋራ ለጥራቱ ፍጻሜ ልረካታቸው ሳይሆኑ ርዕሰ ልማት ጋራ</p>	<p>ፊት.</p>
-----------------------------------------------------------------------------------------------------------------------------------------------	------------

2.4 $\Delta L^b d^c \triangleleft \zeta^b \supset \Delta \sigma^b$

2.4.1 $\triangleright \Gamma \triangleleft^c \mathcal{R} \triangleleft^c \triangleleft \triangleright \mathcal{L}^b \mathcal{D}^c$

[illegible]

የጽሑፍ ስም	የጽሑፍ ቁጥር	የጽሑፍ ዓይነት
የጽሑፍ ስም	የጽሑፍ ቁጥር	የጽሑፍ ዓይነት
የጽሑፍ ስም	የጽሑፍ ቁጥር	የጽሑፍ ዓይነት

[illegible][illegible][illegible]

- \mathbb{R}^n 上的 n 个向量 $\vec{v}_1, \vec{v}_2, \dots, \vec{v}_n$ 线性无关的充要条件是它们构成的行列式不为零。

- [illegible]

[illegible]

▷▷▷▷▷ Δ^αΓ^βΔ^γ Δ^αΓ^βΔ^γΔ^δΔ^εΔ^ζΔ^ηΔ^θΔ^ιΔ^κΔ^λΔ^μΔ^νΔ^ξΔ^οΔ^πΔ^ρΔ^σΔ^τΔ^υΔ^φΔ^χΔ^ψΔ^ωΔ^αΔ^βΔ^γΔ^δΔ^εΔ^ζΔ^ηΔ^θΔ^ιΔ^κΔ^λΔ^μΔ^νΔ^ξΔ^οΔ^πΔ^ρΔ^σΔ^τΔ^υΔ^φΔ^χΔ^ψΔ^ω

[illegible][illegible]

2.4.2 $\triangleright \Gamma \triangleleft^{\epsilon} \chi \triangleleft^{\epsilon} \triangleleft^{\epsilon} \delta \cap^{\epsilon} \mathcal{L}$

[illegible]

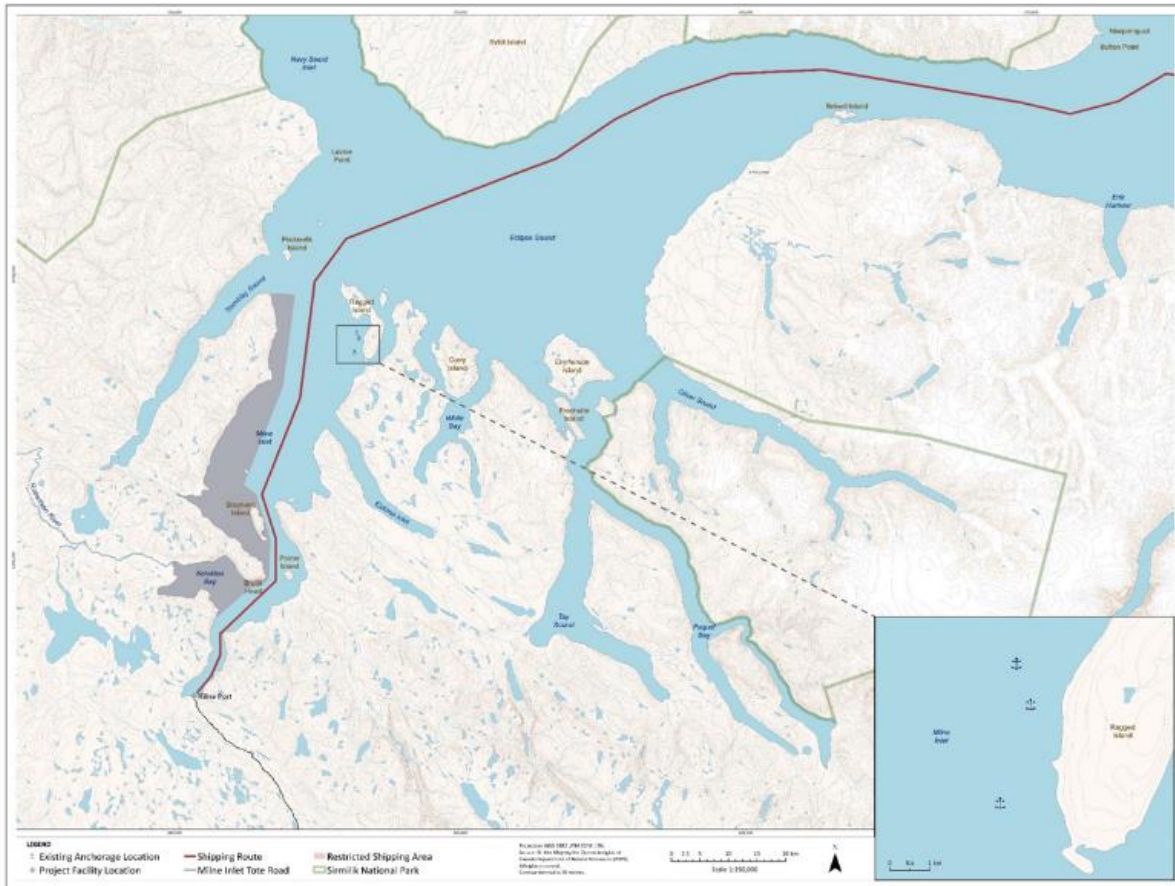
ገጽ ሙሉ ስም ስርዓተ ልብ ወለድ	ገጽ ሙሉ ስም ስርዓተ ልብ ወለድ	ገጽ ሙሉ ስም ስርዓተ ልብ ወለድ
ገጽ ሙሉ ስም ስርዓተ ልብ ወለድ	ገጽ ሙሉ ስም ስርዓተ ልብ ወለድ	ገጽ ሙሉ ስም ስርዓተ ልብ ወለድ

[illegible]

ᐃᓯᐱᕐᑭᓂ ᐅᓯᐱᓴᐱᓄᐸ ᐱᓴᐱᓂᐸ (ᐱᓇᐅᓪᐸ ᐱᓪᐅ ᐱᓴᓚ ᓴᓪᐅᓚᐸ [Northwest Passage] ᐃᓯᓴᓴᐱᓄᐸ
ᐱᓇᓴᓴᐅᓪᐸ ᐅᓴᓇ ᐱᓇᓂᐱᓴᓴᐸ ᐅᓴᓴᐅᓂᓴᓴ.

[illegible]

ᐱᓄᓐᓂᓐ ᐱᓕᓂᐱᓐ ᐃᓄᓐᓂᓐ ᐃᓄᓐᓂᓐ (TSD-18), ᐃᓄᓐᓂᓐ ᐃᓄᓐᓂᓐ ᐃᓄᓐᓂᓐ (TSD-19), ᐃᓄᓐᓂᓐ ᐃᓄᓐᓂᓐ ᐃᓄᓐᓂᓐ (TSD-20), ᐃᓄᓐᓂᓐ ᐃᓄᓐᓂᓐ ᐃᓄᓐᓂᓐ (TSD-21), ᐃᓄᓐᓂᓐ ᐃᓄᓐᓂᓐ ᐃᓄᓐᓂᓐ (TSD-22), ᐃᓄᓐᓂᓐ ᐃᓄᓐᓂᓐ ᐃᓄᓐᓂᓐ (TSD-23), ᐃᓄᓐᓂᓐ ᐃᓄᓐᓂᓐ ᐃᓄᓐᓂᓐ (TSD-24) ᐃᓄᓐᓂᓐ ᐃᓄᓐᓂᓐ ᐃᓄᓐᓂᓐ.



ᐱᓄᓐᓂᓐ 2.4: ᐃᓄᓐᓂᓐ ᐃᓄᓐᓂᓐ ᐃᓄᓐᓂᓐ

ᐱᓕᓂᐱᓐ ᐃᓄᓐᓂᓐ ᐃᓄᓐᓂᓐ ᐃᓄᓐᓂᓐ ᐃᓄᓐᓂᓐ ᐃᓄᓐᓂᓐ	ᐃᓄᓐᓂᓐ
ᐱᓕᓂᐱᓐ ᐃᓄᓐᓂᓐ ᐃᓄᓐᓂᓐ ᐃᓄᓐᓂᓐ ᐃᓄᓐᓂᓐ	

2.4.3 ᐃᓄᓐᓂᓐ ᐃᓄᓐᓂᓐ ᐃᓄᓐᓂᓐ

ᐃᓄᓐᓂᓐ 2.16: ᐃᓄᓐᓂᓐ ᐃᓄᓐᓂᓐ ᐃᓄᓐᓂᓐ

ᐃᓄᓐᓂᓐ ᐃᓄᓐᓂᓐ ᐃᓄᓐᓂᓐ	ᐃᓄᓐᓂᓐ ᐃᓄᓐᓂᓐ	ᐃᓄᓐᓂᓐ ᐃᓄᓐᓂᓐ
Supramax ᐃᓄᓐᓂᓐ ᐃᓄᓐᓂᓐ	Capesize ᐃᓄᓐᓂᓐ ᐃᓄᓐᓂᓐ	ᐃᓄᓐᓂᓐ Capesize ᐃᓄᓐᓂᓐ ᐃᓄᓐᓂᓐ
ᐃᓄᓐᓂᓐ 58-ᓂᓐ ᐃᓄᓐᓂᓐ ᐃᓄᓐᓂᓐ	ᐃᓄᓐᓂᓐ 176 ᐃᓄᓐᓂᓐ ᐃᓄᓐᓂᓐ	

<p>▷▷▷CĬ^ᵇd^c 4.2Mt-_ᵇc^c; ◁^ᶜᶜ^ᶜᶜ^ᶜd^c 86 ▷▷ᶜᵇC^{ᶜᵇ}C▷▷ᶜᵇ ▷ᶜᶜᵇC^{ᶜᵇ}▷▷▷CĬ^ᵇd^c 6Mt- ᵇ^c</p>	<p>◁^ᶜᶜ^ᶜᶜ^ᶜᶜ^ᶜ▷ᶜᵇ 90-118 ▷ᶜᶜᵇC^{ᶜᵇ}C▷▷ᶜᵇ▷ᶜᵇ▷ᶜᶜᵇC^{ᶜᵇ}▷ᶜᵇ ▷▷▷CĬ^ᵇd^c</p>
-------------------------------------------------------------------------------------------------------------------------------------------------------------------------------------------------------------------------------------------------------------------	--------------------------------------------------------------------------------------------------------------------------------------------------------------------------------

[illegible]

- [illegible]

[illegible][illegible][illegible][illegible][illegible]

ደብዳቤውንም፣ ልዩነትንም ለመቀነስና ለመቀረፍ ለሚያስፈልጉት ሁሉም ሰራተኛዎች ለሚገኝበት የሥራ ስልጠና ለማድረግ ይረዳል። BIM ማሳሰቢያው የሥራ ስልጠናውን ለማድረግ ለሚያስፈልጉት ሁሉም ሰራተኛዎች ለሚገኝበት የሥራ ስልጠና ለማድረግ ይረዳል።

በጥቅም 2.17: ልዩነቶችን ለመለየት ይጠቅሙ

[illegible]

[illegible]

<p>ለጥራትና ፍጻሜ ያሳደጉ ልረብኑት ልጅ የሆኑትን ልጆች ለሰራተኛው ጋራ</p> <p>ለጥራትና ፍጻሜ ያሳደጉ ልረብኑት ልጅ የሆኑትን ልጆች ለሰራተኛው ጋራ</p>	<p>ፍጹም</p> <p>ፍጹም</p>
-------------------------------------------------------------------------------------------------------	-----------------------

[illegible]

May 6, 2020

[illegible]