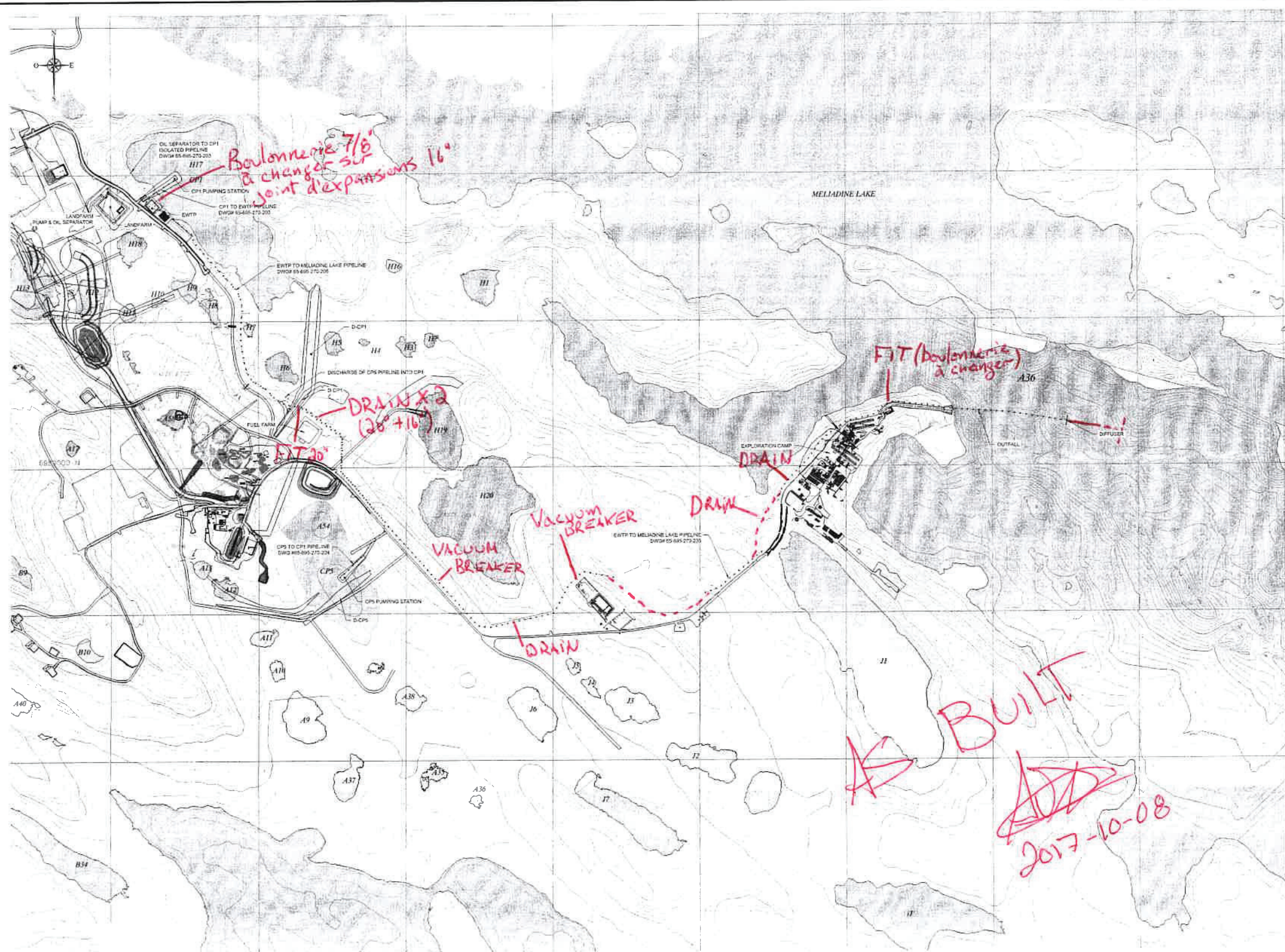


Appendix Q

Infrastructures As-Built and Design

Effluent Water Treatment Plant (EWTP)

Meliadine Interim Closure and Reclamation Plan 2019		Original -V.00
2019/12/12	668523-4000-4EER-0001	Technical Report



HDPE PIPELINES - GENERAL VIEW PLAN
SCALE: 1:5000

PLAN DE
VUE GÉNÉRALE

NOTES GÉNÉRALES / GENERAL NOTES

1. FOR EACH PIPELINE, A 4" FISH SHALL BE GRADED AND FREE OF BOULDERS AND SHARP ROCKS TO AVOID DAMAGES TO THE PIPE AS IT WANDERS WITH TEMPERATURE VARIATIONS.
2. PIPES SHALL BE ANCHORED EVERY 30m WITH EARTHEN FILL (EXCEPT FOR OTHER SECTIONS SPECIFICALLY DETAILED) AND SHALL BE SHAKED BETWEEN EACH ANCHOR POINTS. SEE DETAIL #11 ON DWG #65-695-270-206 S4.3
3. SEE INSTALLATION SPECIFICATIONS #65-695-265-018-265-SPT-003 #65-695-265-018-265-SOW-001



DESSINS EN RÉFÉRENCE / REFERENCE DRAWINGS

NO.	TITLE	DATE
1		
2		
3		
4		
5		

AGNICO EAGLE

NO.	DATE	DESCRIPTION	BY	CHK
1	2017/07/11	FOR CONSTRUCTION	S.C.	O.B.
2	2017/08/22	FOR TENDER (CONSTRUCTION)	S.C.	O.B.
3	2018/11/30	FOR TENDER (SUPPLY)	M.	M.R.

REVISIONS



AGNICO EAGLE - MELIADINE
WATER MANAGEMENT
HDPE PIPELINES - GENERAL ARRANGEMENT
2017 - CONSTRUCTION PLAN

DESIGNED BY	MARIO C.	DATE	2016/11/30
CHECKED BY	BENOIT T.	DATE	2017/06/22
APPROVED BY	ORPHE B.	DATE	2017/06/22
SCALE	SHOWN	DATE	2017/06/22