



## **NIRB Uuktuutinga Ihivriughikhamut #125499**

### **Renewal and Amendment of the Resolute Bay Utilidoy System Water Licence #3 BM-RUT 1520 Type A for Ten (10) yrs. term**

**Uuktuutinga Qanurittuq:** New

**Havaap Qanurittunia:** Hannayauyukhanik

**Uuktuutinga Ublua:** 1/13/2020 11:39:30 AM

**Period of operation:** from 0001-01-01 to 0001-01-01

**Piumayaat Angirutinga:** from 0001-01-01 to 0001-01-01

**Havauhikhaq Ikayuqtinga:** Department of Community and Government Services, Bhabesh Roy  
Department of Community and Government Services, Bhabesh Roy  
P.O. Box 379, Pond Inlet, NU X0A 0S0, Phone: 867-899-7314, Email: [broy@gov.nu.ca](mailto:broy@gov.nu.ca)  
Pond Inlet Nunavut X0A 0S0  
Canada  
Hivayautit Nampanga:: 867-899-7314, Kayumiktukkut Nampanga:: 867-899-7330

# QANURITTUT

## Tukihiannaqtunik havaariyaumayumik uqauhiuyun

**Qablunaatitut:** Executive Summary of the Hamlet of Resolute Bay Water Licence # 3BM-RUT 1520. The Hamlet of Resolute Bay is located on the south coast of Cornwallis Island on the Perry Channel at 74043'01N and 94058'10"W. The current population of the town is 279 (2019). During summer, the town population is increased to about 800 due the presence of the Military. There are (3) three water licenses in the community. The Government of Nunavut Community and Government Services (GN-CGS) is the licensee of the Utilidor system and the Water Licence number is 3BM-RUT 1520. This licence was issued on March 30, 2015 and this will expire on March 29, 2020. Char Lake is the approved water source in the Community. A hydrology study conducted by exp Services Inc. shows that there was sufficient stored volume between the extreme of ice thickness and the raw water intake to support two (2) successive years of extreme high demand like 300,000 cubic meters annually combined with extreme low precipitation (78.2 mm total) just prior to the replacement period of the buried pipes. The pump station has a meter to record the annual extraction volume from the Lake. The total extraction volume in 2018 was 156,062 cubic meters. The Airport facilities shared 5,000 cubic meters annually. Water Truck is the only mode of distribution system for the Airport facilities. Sewage is also collected by sewage trucks from house to house and dumped into a sewage lagoon which is operated under a different water licence. The Utilidor system consists of a pump station at Char Lake, intake pipe, water treatment plant at Signal hill, water distribution and sewer lines, fire hydrants, access vaults and a macerator unit. The Utilidor system was built in 1970's without a wastewater treatment plant. In 2016, the entire buried utilities were replaced and also expanded. In 2020, the construction of the pump station at Char Lake and is the existing water treatment plant at Signal Hill is scheduled to be completed. The sewage effluent via wastewater pipes is diluted before entering into the sea. The effluent discharge occurs just above the low tide mark. The effluent is discharged continually into the ocean at high tide and on land at low tide. Following the condition in part C, item 4 of the existing water licence; a site specific study for the determination of Fecal Coliform limit for sewage disposal facility was determined and has been submitted to the Water Board. A consultant is hired to conduct a site selection study to build a new mechanical wastewater treatment plant. The design concept was initiated and needs to be revised and upgraded. The new plant is anticipated to be built and commissioned in 2024. This plant will also receive truck sewage coming from the Airport facilities. The airport sewage lagoon will be decommissioned soon after the new Mechanical wastewater treatment plant is commissioned. A consultant is engaged for replacing the Char Lake existing Pump station, Signal Hill Water Treatment plant upgradation and also building a new mechanical wastewater treatment plant to improve the overall water distribution system ; wastewater collection and Treatment process to bring the Utilidor water licence into full compliance. The entire Utilidor system operation was contracted out to the Contractor ATCO and they day to day run and monitor these facilities. The summer samplings are taken and get tested by the Ottawa based Accredited Caduceon Lab. The annual report is submitted on time. The O&M manuals will be submitted to the Water Board soon after the constructions of the all three structures are completed. The daily water extraction volume exceeds 300 cubic meters/day and also exceeds the annual extraction volume 60,000 cubic meters. 2018 Annual Report identifies that Resolute Bay consumed 152,062 cubic meters, therefore, a ten years term for renewal of the Type A licence is recommended with 160,000 cubic meters of usage. The time period of ten years is expected to provide a realistic opportunity for the licensee to meet the long term requirements of the Licence and establish a consistent compliance record.

**Uiviititut:** Résumé du permis d'utilisation des eaux du hameau de Resolute Bay No 3BM-RUT 1520. Le hameau de Resolute Bay se situe sur la côte sud de l'île Cornwallis, sur le chenal Parry, aux coordonnées suivantes : 740 43'01 N et 940 58'10" O. La ville a une population actuelle de 279 habitants (2019). Durant l'été, la population de la ville passe à environ 800 personnes en raison de la présence de personnel militaire. Il y a trois (3) permis d'utilisation des eaux dans la collectivité. Le ministère des Services communautaires et gouvernementaux du gouvernement du Nunavut (SCG-GN) est le titulaire de licence du système Utilidor et le numéro du permis d'utilisation des eaux est 3BM-RUT 1520. Le permis a été délivré le 30 mars 2015 et sera échu le 29 mars 2020. Le lac Char est la source d'eau approuvée dans la collectivité. Une étude hydrologique effectuée par exp Services inc. indique qu'il y a un volume entreposé suffisant entre l'extrémité de l'épaisseur de glace et la prise d'eau brute pour soutenir deux (2) années consécutives de demande annuelle très élevée de l'ordre de 300 000 mètres cubes, combinée à des précipitations très faibles (total de 78,2 mm) juste avant la période de remplacement des tuyaux enfouis. La station de pompage est munie d'un compteur qui permet de consigner le volume d'extraction annuel du lac. En 2018, le volume d'extraction annuel était de 156 062 mètres cubes. Les installations aéroportuaires se sont partagées 5 000 mètres cubes annuellement. Le transport par camion d'eau est le seul système de distribution pour les installations aéroportuaires. Le réseau d'assainissement est également assuré par camions-citernes d'une maison à l'autre, puis les eaux usées sont déversées dans l'étang de stabilisation, exploité en vertu d'un permis d'utilisation des eaux distinct. Le système Utilidor se compose d'une station de pompage au lac Char, d'un tuyau d'admission, d'une usine de traitement des eaux à Signal Hill, de lignes de distribution d'eau, de canalisations d'égout, de bornes d'incendie, de

Inuktitut:

Post-Closure Phase: from to

## Hulilukaarutit

Inigiya	Hulilukaarut Qanurittuq	Nunannga Qanurittaakhaanik	Initurlinga qanuritpa	Initurlinga utuqqarnitat unaluuniit Ingilraaqnitat Uyarannguqtut akhuurninnga	Qanitqiyauyuq qanitqiamut nunallaat kitulluuniit ahiruqtaliyainnit nuna
New project geometry: This is the Utilidor system consists of a Pump station at Char Lake, WTP at signal Hill, Storage Tank at Signal Hill, Intake pipe, water and sewer buried lines, Fire hydrants, Valves, a Macirator unit and sewer outfall.	Municipal and Industrial Development	Commissioners	The existing site	Good	Within the town
New project geometry: This is the Utilidor system consists of a Pump station at Char Lake, WTP at signal Hill, Storage Tank at Signal Hill, Intake pipe, water and sewer buried lines, Fire hydrants, Valves, a Macirator unit and sewer outfall.	Municipal and Industrial Development	Municipal	The utilidor system was built in 1970s to supply drinking water to Resolute Bay Residents and the Federal staffs who visited there for training, research etc. The waste water is highly diluted and discharged into the sea by gravity.	No problem	Grise Fiord and Arctic Bay

### Nunaliin Ilauyun, Aviktuqhimayuniitunullu Ikayuuhiarunguyun

Nunauyuq	Atia	Timiuyuq	Upluani Uqaqatigiyaungmata
Qausuittuq	Bhabesh Roy	Community Government Services of Government of Nunavut	2020-01-17

# Angiuttauvaktunik

Naunaiqlugu nunanga talvani havauhikhaq ittuq:

North Baffin

## Angiuttauvaktunik

Munariniqmut Ayuittiaqtuq	Angirutinga Qanurittuq	Tadja Qanurittaakhaanik	Ublua Tuniyauyuq/Uuktuqtuq	Umikvikhaa Ublua
Nunavut Imaligiyyit Katimayit	The Utilidor system consists of a Pump Station, Intake line, A WTP, Distribution line, Sewer Line, a Macirtaor unit and final discharge pipe	Active		
Nunavut Imaligiyyit Katimayit	Water licence will be renewed by NWB.	Active		

## Project transportation types

Transportation Type	Qanuq Atuqtauniarmangaa	Length of Use
Air		

## Project accomodation types

Nunauyuq

# Ihuaqutivaluin Atuqtauyukhan

Hanalrutit atuqtaunahuat (ukuallu ikuutat, pampiutainnik, tingmitinik, akhaluutinik, hunaluuniit)

Hanalrutit Qanurittuq	Qaffiuyut	Aktikkulaanga – Qanurittullu	Qanuq Atuqtauniarmangaa
Heavy	7300	Unknown	two (2) equipment per day, 365 days and 10 yrs.7300 term

## Qanurittuq Urhuqyuaq unalu Qayangnaqtut Hunavaluit Aturninnga

Qanurittuq urhuqyuaq hunavaluit aturninnga:	Urhuqyuaq Qanurittuq	Qaffiuyut qattaryut	Qattaryuk Aktikkulaanga	Atauttimut Qaffiuyut	Ilanga	Qanuq Atuqtauniarmangaa
Diesel	fuel	20	200	4000	Liters	Construction

## Imaqmik Aturninnga

Ubluq qanuraaluk (m3)	Aturumayain imavaluin utiqtittagaani qanuq	Atulirumayain imavaluin utiqtittagani humi
550	pumping	Char lake

# Iqqakuq

## Ikkakunik Munakgiyauyunik

Havauhikhaq Hulilukaarut	Qanurittuq Iqqakut	Ihumagiyauyuq Qanuraaluktut Atuqtait	Qanuq Iqqakuurniarmangaa	Halummaqtirarnirutikhan piyutin
Seismic lines	Anaagun (inuin anaaguin)	427.57 cubic meters/day	pumping though the pipe	Using a Macerator unit currently. Expected a new Wastewater Treatment Plant in 2024
Municipal and Industrial Development	Anaagun (inuin anaaguin)	Very close to 136,000 cubic meters annually	Gravity drainage	Macirator unit is used at the effluent line

### Avatiliriniqmut Ayurhautingit:

No Impact



# **Additional Information**

## **SECTION A1: Project Info**

The Utilidor system consists of a Pump station, an Intake line, a WTP, a distribution line, a sewer line, a macirator unit and a final sewer outfall

## **SECTION A2: Allweather Road**

Yes

## **SECTION A3: Winter Road**

Yes

## **SECTION B1: Project Info**

## **SECTION B2: Exploration Activity**

## **SECTION B3: Geosciences**

## **SECTION B4: Drilling**

## **SECTION B5: Stripping**

## **SECTION B6: Underground Activity**

## **SECTION B7: Waste Rock**

## **SECTION B8: Stockpiles**

## **SECTION B9: Mine Development**

## **SECTION B10: Geology**

## **SECTION B11: Mine**

## **SECTION B12: Mill**

## **SECTION C1: Pits**

## **SECTION D1: Facility**

## **SECTION D2: Facility Construction**

## **SECTION D3: Facility Operation**

## **SECTION D4: Vessel Use**

## **SECTION E1: Offshore Survey**

**SECTION E2: Nearshore Survey**

**SECTION E3: Vessel Use**

**SECTION F1: Site Cleanup**

Always for easy and safe traffic movement

**SECTION G1: Well Authorization**

**SECTION G2: Onland Exploration**

**SECTION G3: Offshore Exploration**

**SECTION G4: Rig**

**SECTION H1: Vessel Use**

**SECTION H2: Disposal At Sea**

**SECTION I1: Municipal Development**

Yes, this system provides safe environment and community growth

**Qanurittuq Ittunik Avatinga: Avatingalluanga**

Safe

**Qanurittuq Ittunik Avatinga: Inuuhimayunut Avatinga**

Safe

**Qanurittuq Ittunik Avatinga: Inungit-maniliurutingit Avatinga**

Safe

**Miscellaneous Project Information**

NIL

**Naunaiyainiq ukuninnga Ayurhautingit unalu Piumayaat Ikikliyuumiutinahuarutit**

Safe supply of drinking water and disposal of wastewater into the sea by gravity

**Tamatkiumayunik Ihuikgutivaktunik**

Good and healthy for the Public and environment

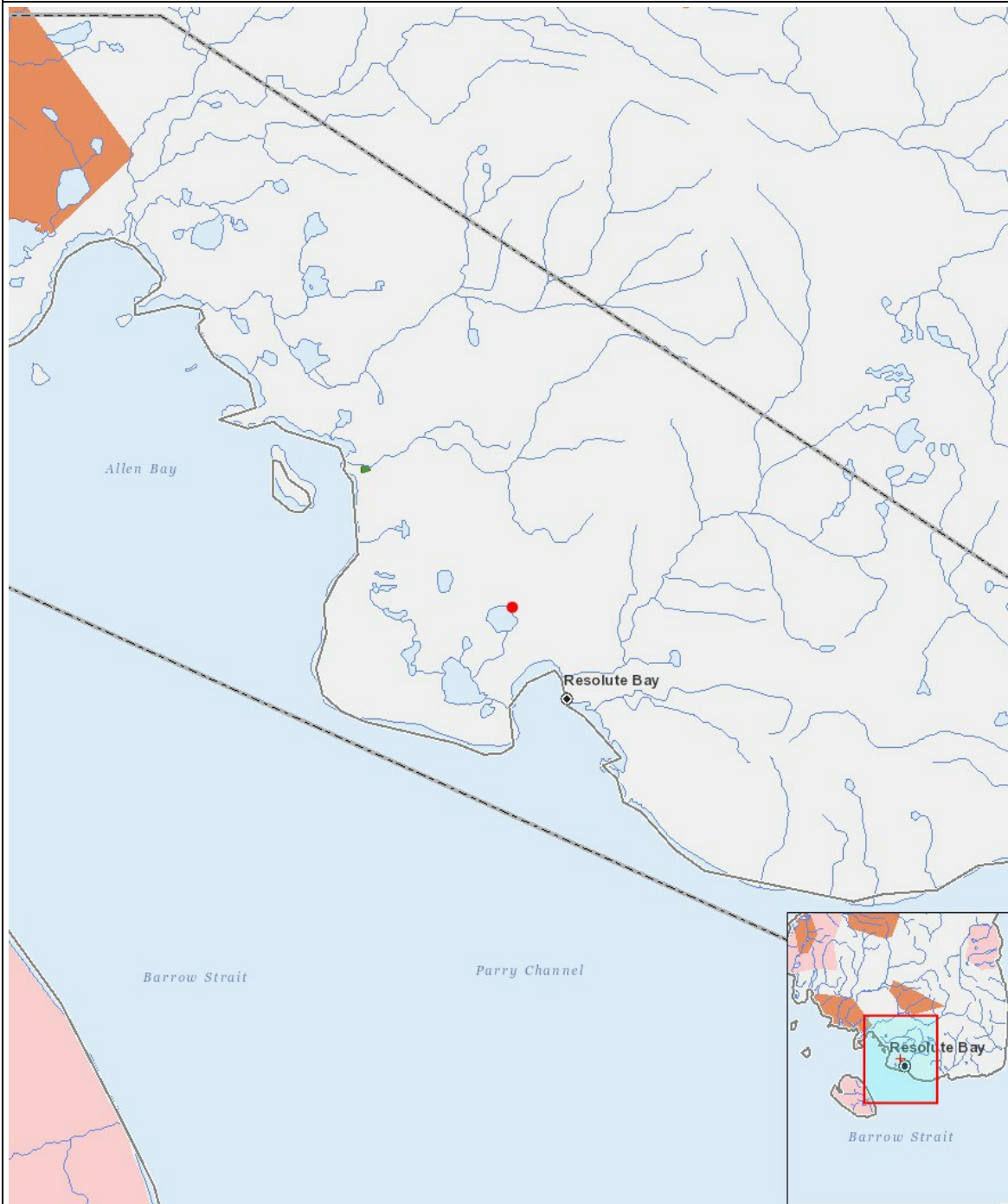
Impacts

Ilitariyauniq Avatiliriniqmut Ayurhautingit

		PHYSICAL	Designated environmental areas	Ground stability	Permafrost	Hydrology / Limnology	Water quality	Climate conditions	Eskers and other unique or fragile landscapes	Surface and bedrock geology	Sediment and soil quality	Tidal processes and bathymetry	Air quality	Noise levels	BIOLOGICAL	Vegetation	Wildlife, including habitat and migration patterns	Birds, including habitat and migration patterns	Aquatic species, incl. habitat and migration/spawning	Wildlife protected areas	SOCIO-ECONOMIC	Archaeological and cultural historic sites	Employment	Community wellness	Community infrastructure	Human health
Havakvinga																										
-		-	-	-	-	-	-	-	-	-	-	-	-	-	-	-	-	-	-	-	-	-	-	-	-	-
Aulapkaininnga																										
-		-	-	-	-	-	-	-	-	-	-	-	-	-	-	-	-	-	-	-	-	-	-	-	-	-
Piiqtauniq																										
-		-	-	-	-	-	-	-	-	-	-	-	-	-	-	-	-	-	-	-	-	-	-	-	-	-

(P = Nakuuyuq, N = Nakuungittut unalu mikhilimaittuq, M = Nakuungittut unalu mikhittaaqtuq, U = Naluyauyuq)

## Havaariyauyukhamut Nayugaa



### List of Project Geometries

New project geometry: This is the Utilidor system consists of a Pump station at Char Lake, WTP 1 point at signal Hill, Storage Tank at Signal Hill, Intake pipe, water and sewer buried lines, Fire hydrants, Valves, a Macirator unit and sewer outfall.