

**Demande de la CNER faisant l'objet d'un examen préalable #125497**  
**DRDC - Replacement of Buoys for International Cooperative**  
**Engagement Program for Polar Research (ICE-PPR)**

## DÉTAILS

## Description non technique de la proposition de projet

Anglais: As part of the International Arctic Buoy Program (IABP), placement of buoys on the Arctic ice cap is among the activities. A variety of buoys are placed by the IABP via various means, in an effort to monitor environmental conditions (wind, temperature, pressure, salinity, etc., depending on the buoy and location) and to track the movement of ice. ICE-PPR coordinates the airlift resources of the US, Canada, and Denmark, to place buoys on the ice or in leads, which is far from land in most cases. There are no land-based or maritime-based operations being contemplated at this time to deliver buoys to their destinations. Buoys will only be delivered by air. A C-130 aircraft operating out of Resolute, as arranged by the RCAF or other air force through established military protocols, will be the primary air operation. Buoys will be dropped in the far north, north of Ellesmere Island. Should it be required, any remaining buoys which were not dropped by the C-130, may be dropped by CC-138 Twin Otter. At this point in time, buoys replacement activity is being only contemplated for only three ice tracker buoys intended to be placed on ice locations following this year's operation (Op NA-NU 20), in March of 2020.

Français: Not applicable

[illegible]

Inuinnaqtun: Not applicable

## Personnel

Personnel on site: 0

Days on site: 0

Total Person days: 0

Operations Phase: from 2020-02-01 to 2025-06-30

## Activités

Emplacement	Type d'activité	Statut des terres	Historique du site	Site à valeur archéologique ou paléontologique	Proximité des collectivités les plus proches et de toute zone protégée
USIABP IT #2	Researching	Marine	nil	nil	Approximately 75km west of Quttinirpaaq National Park 645 km north of Grise Fiord.
USIABP IT #3	Researching	Marine	nil	nil	Approximately 75km west of Quttinirpaaq National Park 645 km north of Grise Fiord.
USIABP IT#1	Researching	Marine	nil	nil	Approximately 400 km west of Quttinirpaaq National Park 580 km north of Grise Fiord.

### Engagement de la collectivité et avantages pour la région

Collectivité	Nom	Organisme	Date de la prise de contact
Information is not available			

## Autorisations

Indiquez les zones dans lesquelles le projet est situé:

Transboundary  
North Baffin

### Autorisations

Organisme de régulation	Description des autorisations	État actuel	Date de l'émission/de la demande	Date d'échéance
Information is not available				

### Project transportation types

Transportation Type	Utilisation proposée	Length of Use
Air	C130 Aircraft	

### Project accomodation types

Autre,

## Utilisation de matériel

Équipement à utiliser (y compris les perceuses, les pompes, les aéronefs, les véhicules, etc.)

Type d'équipement	Quantité	Taille – Dimensions	Utilisation proposée
Aircraft	1	C-130	In order to drop the buoys on the correct ice island/location
Buoyy	3	30 cm by 45 cm in size and less than 5 kgs in weight	to monitor environmental conditions (wind, temperature, pressure, salinity, etc, depending on the buoy and location) and to track the movement of ice.

Décrivez l'utilisation du carburant et des marchandises dangereuses

Décrivez l'utilisation de carburant :	Type de carburant	Nombre de conteneurs	Capacité du conteneur	Quantité totale	Unités	Utilisation proposée
Information is not available						

Consommation d'eau

Quantité quotidienne (m3)	Méthodes de récupération de l'eau proposées	Emplacement de récupération de l'eau proposé
0		

# Déchets

## Gestion des déchets

Activités du projet	Type des déchets	Quantité prévue	Méthode d'élimination	Procédures de traitement supplémentaires
Information is not available				

## Répercussions environnementales :

nil - there is no history of environmental impacts with previous buoy drop activities and none are predicted with the current proposed buoy drops.

# **Additional Information**

**SECTION A1: Project Info**

**SECTION A2: Allweather Road**

**SECTION A3: Winter Road**

**SECTION B1: Project Info**

**SECTION B2: Exploration Activity**

**SECTION B3: Geosciences**

**SECTION B4: Drilling**

**SECTION B5: Stripping**

**SECTION B6: Underground Activity**

**SECTION B7: Waste Rock**

**SECTION B8: Stockpiles**

**SECTION B9: Mine Development**

**SECTION B10: Geology**

**SECTION B11: Mine**

**SECTION B12: Mill**

**SECTION C1: Pits**

**SECTION D1: Facility**

**SECTION D2: Facility Construction**

**SECTION D3: Facility Operation**

**SECTION D4: Vessel Use**

**SECTION E1: Offshore Survey**

**SECTION E2: Nearshore Survey**

**SECTION E3: Vessel Use**

**SECTION F1: Site Cleanup**

**SECTION G1: Well Authorization**

**SECTION G2: Onland Exploration**

**SECTION G3: Offshore Exploration**

**SECTION G4: Rig**

**SECTION H1: Vessel Use**

**SECTION H2: Disposal At Sea**

**SECTION I1: Municipal Development**

**Description de l'environnement existant : Environnement physique**

sea-ice, uninhabited

**Description de l'environnement existant : Environnement biologique**

nil

**Description de l'environnement existant : Environnement socio-économique**

nil

**Miscellaneous Project Information**

**Identification des répercussions et mesures d'atténuation proposées**

nil

**Répercussions cumulatives**

nil



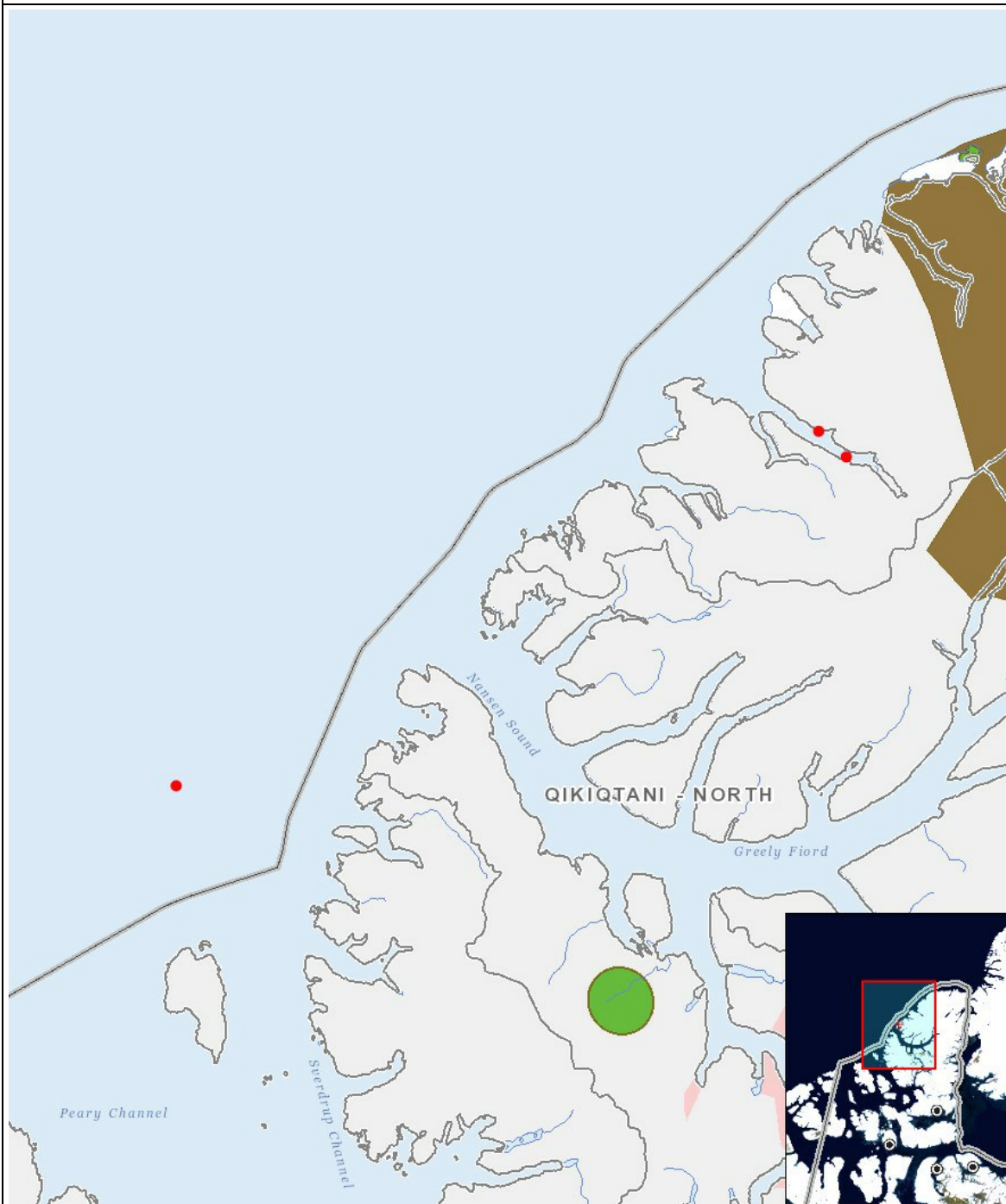
Impacts

Identification des répercussions environnementales

	PHYSICAL	Designated environmental areas	Ground stability	Permafrost	Hydrology / Limnology	Water quality	Climate conditions	Eskers and other unique or fragile landscapes	Surface and bedrock geology	Sediment and soil quality	Tidal processes and bathymetry	Air quality	Noise levels	BIOLOGICAL	Vegetation	Wildlife, including habitat and migration patterns	Birds, including habitat and migration patterns	Aquatic species, incl. habitat and migration/spawning	Wildlife protected areas	SOCIO-ECONOMIC	Archaeological and cultural historic sites	Employment	Community wellness	Community infrastructure	Human health
Construction	-	-	-	-	-	-	-	-	-	-	-	-	-	-	-	-	-	-	-	-	-	-	-	-	-
Exploitation	-	-	-	-	-	-	-	-	-	-	-	-	-	-	-	-	-	-	-	-	-	-	-	-	-
Désaffectation	-	-	-	-	-	-	-	-	-	-	-	-	-	-	-	-	-	-	-	-	-	-	-	-	-

(P = Positive, N = Négative et non gérable, M = Négative et gérable, U = Inconnue)

## Site du projet



## Liste des géométries de projet

1	point	USIABP IT#1
2	point	USIABP IT #2
3	point	USIABP IT #3