

2019 Satellite-collared Caribou by Season

- Spring
- Summer
- Fall
- Winter

Legend

- All-Weather Access Road
- Whale Tail Haul Road
- ▭ Meadowbank All-Weather Access Road Local Study Area (LSA)
- ▭ Meadowbank Local Study Area (LSA)
- ▭ Meadowbank Regional Study Area (RSA)
- ▭ Whale Tail Pit and Haul Road Local Study Area (LSA)
- ▭ Whale Tail Pit and Haul Road Regional Study Area (RSA)

0 50 100 150
Kilometres

Projection: UTM Zone 14 NAD83

Data Sources:
Natural Resources Canada, GeoBase®
National Topographic Database,
Agnico-Eagle Mines Limited,
Department of Environment
(Gov't of Nunavut),
Gov't of Northwest Territories



Figure 6.1: 2019 Government of Nunavut and Northwest Territories Telemetry Programs Collar Locations

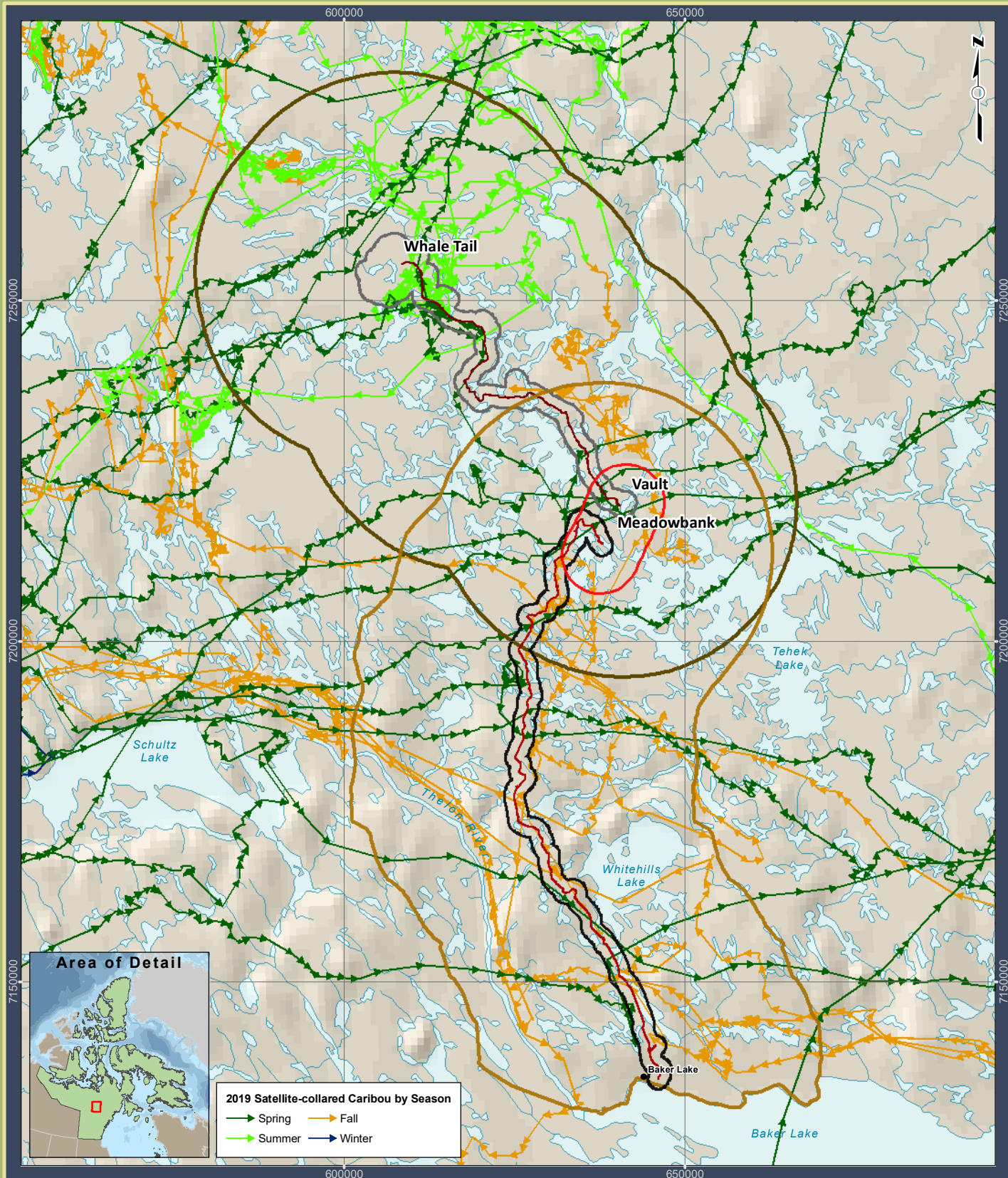
Meadowbank Gold Project

Prepared for:



By:





- Legend**
- All-Weather Access Road
 - Whale Tail Haul Road
 - ▭ Meadowbank Local Study Area (LSA)
 - ▭ Meadowbank All-Weather Access Road Local Study Area (LSA)
 - ▭ Meadowbank Regional Study Area (RSA)
 - ▭ Whale Tail Pit and Haul Road Local Study Area (LSA)
 - ▭ Whale Tail Pit and Haul Road Regional Study Area (RSA)

0 10 20 30
Kilometres

Projection: UTM Zone 14 NAD83

Data Sources:
Natural Resources Canada, GeoBase®
National Topographic Database,
Agnico-Eagle Mines Limited,
Department of Environment
(Gov't of Nunavut),
Gov't of Northwest Territories

Figure 6.2: 2019 Caribou Telemetry Data – Collar Movements in the RSA

Meadowbank Gold Project

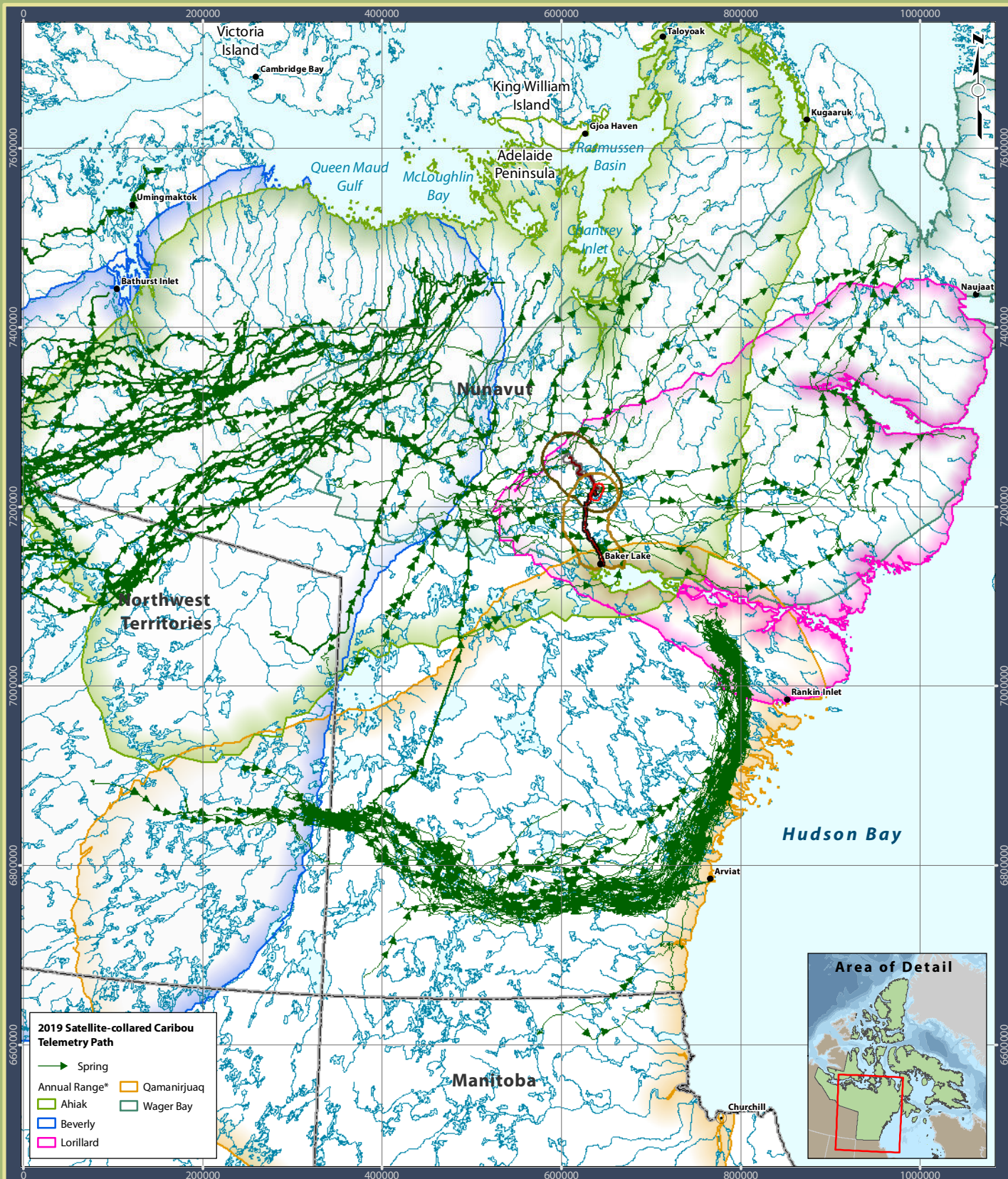
Prepared for:

AGNICO EAGLE

By:

Nunavut
ENVIRONMENTAL
CONSULTING LTD

CASLYS
CONSULTING



Legend

- All-Weather Access Road
- Whale Tail Haul Road
- Meadowbank Local Study Area (LSA)
- Meadowbank All-Weather Access Road Local Study Area (LSA)
- Meadowbank Regional Study Area (RSA)
- Whale Tail Pit and Haul Road Local Study Area (LSA)
- Whale Tail Pit and Haul Road Regional Study Area (RSA)

* Official home ranges and calving grounds are from the following publication:
Nagy, J. A., D. L. Johnson, N. C. Larter, M. W. Campbell, A. E. Derocher, A. Kelly, M. Dumond, D. Allaire, and B. Croft. 2011. Subpopulation structure of caribou (*Rangifer tarandus* L.) in arctic and subarctic Canada. *Ecological Applications* [doi:10.1890/10-1410.1].

0 50 100 150
Kilometres

Projection: UTM Zone 14 NAD83

Data Sources:
Natural Resources Canada, GeoBase®
National Topographic Database,
Agnico-Eagle Mines Limited,
Department of Environment
(Gov't of Nunavut),
Gov't of Northwest Territories

Figure 6.3: 2019 Caribou Telemetry Data – Spring Season (April 1 to May 25)

Meadowbank Gold Project

Prepared for:

AGNICO EAGLE

By:

Nunavut
ENVIRONMENTAL
CONSULTING LTD

CASLYS
CONSULTING

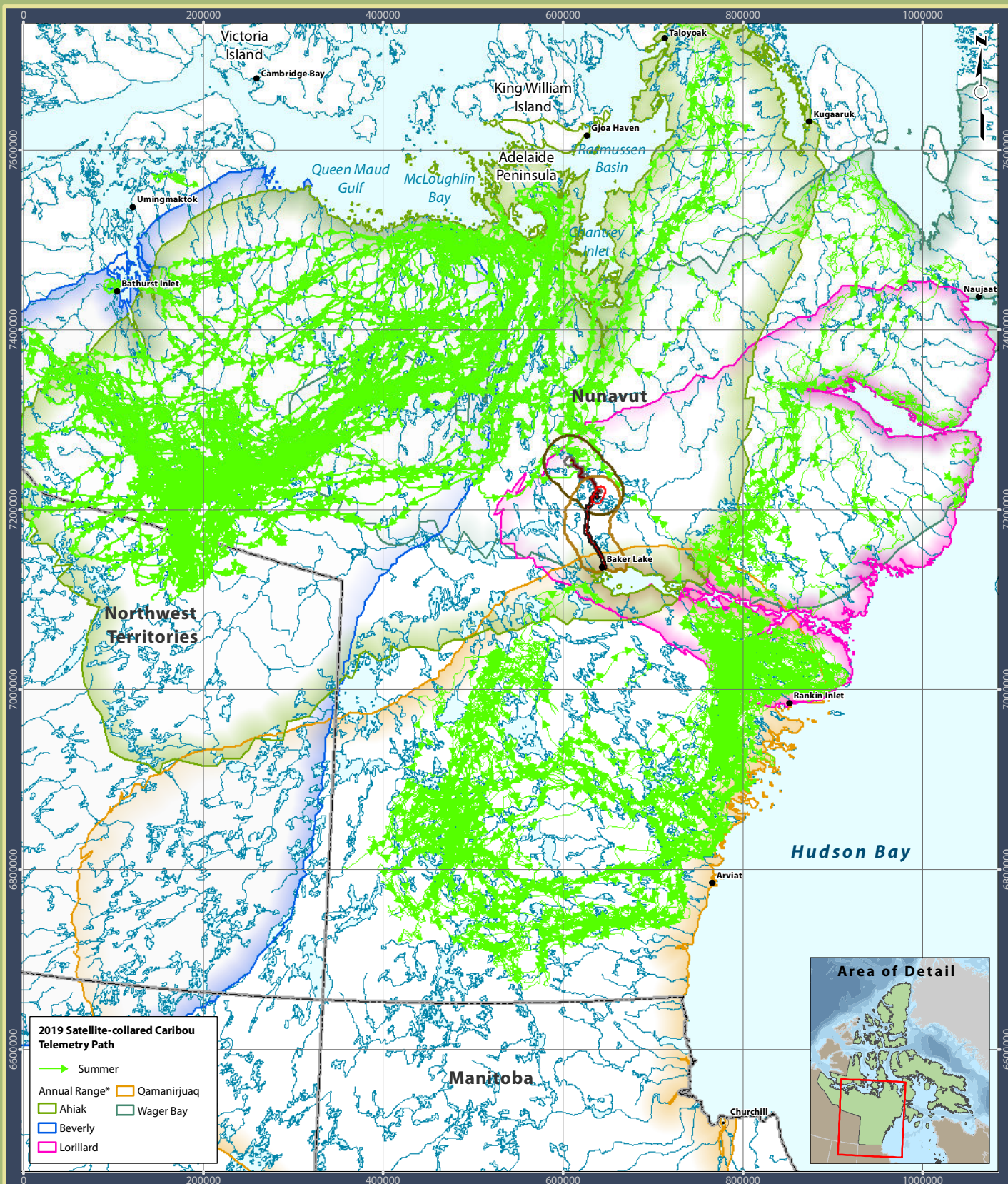


Figure 6.4: 2019 Caribou Telemetry Data – Summer Season (May 26 to September 21)

Meadowbank Gold Project

Prepared for:



By:



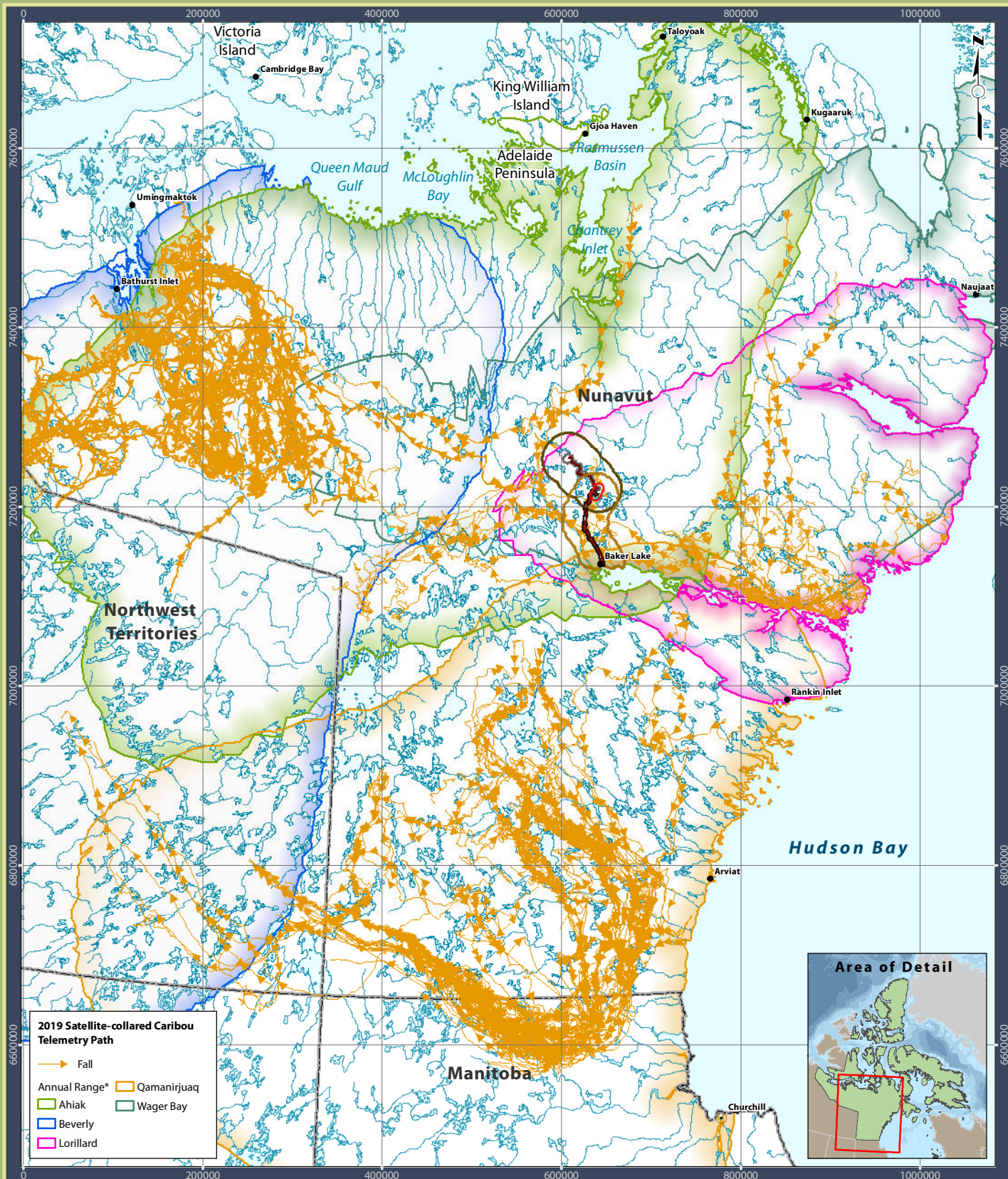
0 50 100 150
Kilometres

Projection: UTM Zone 14 NAD83

Data Sources:

Natural Resources Canada, GeoBase®
National Topographic Database,
Agnico-Eagle Mines Limited,
Department of Environment
(Gov't of Nunavut),
Gov't of Northwest Territories





2019 Satellite-collared Caribou Telemetry Path

— Fall
 Annual Range* Qamanirjuaq
 Ahiak
 Beverly
 Lorillard

- Legend**
- All-Weather Access Road
 - Whale Tail Haul Road
 - Meadowbank Local Study Area (LSA)
 - Meadowbank All-Weather Access Road Local Study Area (LSA)
 - Meadowbank Regional Study Area (RSA)
 - Whale Tail Pit and Haul Road Local Study Area (LSA)
 - Whale Tail Pit and Haul Road Regional Study Area (RSA)

* Official home ranges and calving grounds are from the following publication:
 Nagy, J. A., D. L. Johnson, N. C. Larter, M. W. Campbell, A. E. Derocher, A. Kelly, M. Dumond, D. Allaire, and B. Croft. 2011. Subpopulation structure of caribou (Rangifer tarandus L.) in arctic and subarctic Canada. Ecological Applications [doi:10.1890/1051-0761.111].

0 50 100 150
 Kilometres

Projection: UTM Zone 14 NAD83

Data Sources:
 Natural Resources Canada, GeoBase®
 National Topographic Database,
 Agnico-Eagle Mines Limited,
 Department of Environment
 (Gov't of Nunavut),
 Gov't of Northwest Territories

Figure 6.5: 2019 Caribou Telemetry Data – Fall Season (September 22 to December 15)

Meadowbank Gold Project

Prepared for: **AGNICO EAGLE**
 By: **Nunavut ENVIRONMENTAL CONSULTING LTD.** and **CASLYS CONSULTING**



2019 Satellite-collared Caribou Telemetry Path

→ Winter

Annual Range* Qamanirjuaq

Ahiak Beverly

Lorillard

Legend

- All-Weather Access Road
- Whale Tail Haul Road
- Meadowbank Local Study Area (LSA)
- Meadowbank All-Weather Access Road Local Study Area (LSA)
- Meadowbank Regional Study Area (RSA)
- Whale Tail Pit and Haul Road Local Study Area (LSA)
- Whale Tail Pit and Haul Road Regional Study Area (RSA)

* Official home ranges and calving grounds are from the following publication:
Nagy, J. A., D. L. Johnson, N. C. Larter, M. W. Campbell, A. E. Derocher, A. Kelly, M. Dumond, D. Allaire, and B. Croft. 2011. Subpopulation structure of caribou (Rangifer tarandus L.) in arctic and subarctic Canada. Ecological Applications [doi:10.1890/1051-0761.11].

0 50 100 150
Kilometres

Projection: UTM Zone 14 NAD83

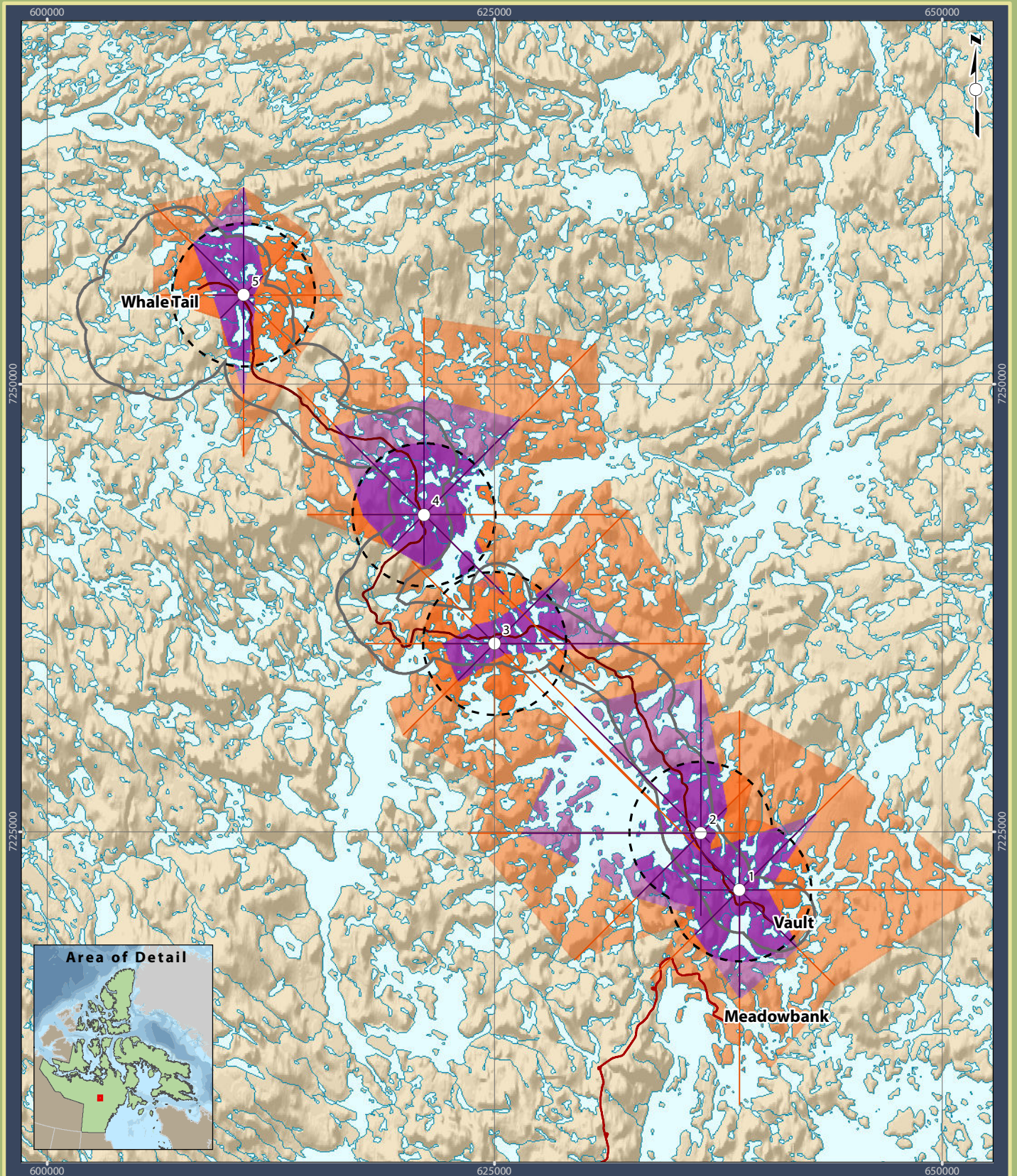
Data Sources:
Natural Resources Canada, GeoBase®
National Topographic Database,
Agnico-Eagle Mines Limited,
Department of Environment
(Gov't of Nunavut),
Gov't of Northwest Territories

Figure 6.6: 2019 Caribou Telemetry Data – Winter Season (December 16 to March 31)

Meadowbank Gold Project

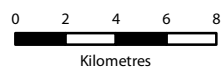
Prepared for: **AGNICO EAGLE**

By: **Nunavut ENVIRONMENTAL CONSULTING LTD** and **CASLYS CONSULTING**



Legend

- Whale Tail Haul Road
- All-Weather Access Road
- Whale Tail Pit and Haul Road Local Study Area (LSA)
- Height-of-Land Survey Location
- Buffer (4 km)
- Sightline**
- Lowlands
- Highlands
- Maximum Observable Area**
- Lowlands
- Highlands



Projection: UTM Zone 14 NAD83

Data Sources:
 Natural Resources Canada, GeoBase®
 National Topographic Database
 Agnico-Eagle Mines Limited.

Figure 7.1 Location of Height of Land Surveys along the Whale Tail Haul Road (and View Corridors)

Meadowbank Gold Project

Prepared for:

AGNICO EAGLE

By:

Nunavut
 ENVIRONMENTAL
 CONSULTING LTD

CASLYS
 CONSULTING