



## **NIRB Uuktuutinga Ihivriughikhamut #125541**

### **Arviat quarry site (near lagoon)**

**Uuktuutinga Qanurittuq:** New

**Havaap Qanurittunia:** Pits and Quarries

**Uuktuutinga Ublua:** 6/19/2020 3:19:02 PM

**Period of operation:** from 0001-01-01 to 0001-01-01

**Piumayaat Angirutinga:** from 0001-01-01 to 0001-01-01

**Havauhikhaq Ikayuqtinga:** NIRB info  
Nunavut Impact Review Board  
Box 1360 ( 20 Mitik)  
Cambridge Bay Nunavut X0B 0C0  
Canada  
Hivayautit Nampanga:: (867) 983-4600, Kayumiktukkut Nampanga:: (867) 983-2594

# QANURITTUT

## Tukihinnaqtunik havaariyaumayumik uqauhiuyun

Qablunaatitut: A quarry site to be used by the local Hamlet to meet the aggregate needs of the community. This site was previously used as a quarry but has since been largely discontinued. Occasionally, the Hamlet does use this site to extract material to be used for road grading and repairs. The exact date is not known when this site was first used to extract quarry material but it is estimated it started between 1980's to 2000's. At this time there is no currently approved extraction amount per year. The plan is it get the quarry approved as a whole and the Hamlet will authorize material to be taken out of the quarry on an as needed basis using quarry permits. Approved size of the quarry is the one shown in the project proposal. Its estimated that there is 80,000 cubic metres of material. There are no plans to increase the footprint.

Uiviititut: N/a

Inuktitut: N/a

Inuinnaqtun: N/a

## Personnel

Personnel on site: 2

Days on site: 1800

Total Person days: 3600

Operations Phase: from 2020-04-05 to 2040-09-29

# Hulilukaarutit

Inigiya	Hulilukaarut Qanurittuq	Nunannga Qanurittaakhaanik	Initurlinga qanuritpa	Initurlinga utuqqarnitat unaluuniit Ingilraaqnitat Uyarannguqtut akhuurninnga	Qanitqiyauyuq qanitqiamut nunallaat kitulluuniit ahiruqtaliyainnit nuna
Quarry site boundary	Quarry/Borrow pit	Municipal	N/A	N/A	Within municipal boundaries of Rankin Inlet and Arviat

## Nunaliin Ilauyun, Aviktuqhimayuniitunullu Ikayuuhiarunguyun

Nunauyuq	Atia	Timiuyuq	Upluani Uqaqatigiyaungmata
Information is not available			

# Angiuttauvaktunik

Naunaiqlugu nunanga talvani havauhikhaq ittuq:

Kivalliq

## Angiuttauvaktunik

Munariniqmut Ayuittiaqtuq	Angirutinga Qanurittuq	Tadja Qanurittaakhaanik	Ublua Tuniyauyuq/Uuktuqtuq	Umikvikhaa Ublua
Information is not available				

## Project transportation types

Transportation Type	Qanuq Atuqtauniarmangaa	Length of Use
Land	Loader, dump truck	

## Project accomodation types

Nunauyuq

# Ihuaqutivaluin Atuqtauyukhan

Hanalrutit atuqtaunahuat (ukuallu ikuutat, pampiutainnik, tingmitinik, akhaluutinik, hunaluuniit)

Hanalrutit Qanurittuq	Qaffiuyut	Aktikkulaanga – Qanurittullu	Qanuq Atuqtauniarmangaa
Loader	1	5.7m x 2.7m x 1.5m	excavate quarry material
dump truck	1	8m x 2.5m x 3.4m	haul quarry material

Qanurittuq Urhuqyuaq unalu Qayangnaqtut Hunavaluit Aturninnga

Qanurittuq urhuqyuaq hunavaluit aturninnga:	Urhuqyuaq Qanurittuq	Qaffiuyut qattaryut	Qattaryuk Aktikkulaanga	Atauttimut Qaffiuyut	Ilanga	Qanuq Atuqtauniarmangaa
Diesel	fuel	1	500	500	Liters	used to fuel the loaders and dump trucks

Imaqmik Aturninnga

Ubluq qanuraaluk (m3)	Aturumayain imavaluin utiqtittagaani qanuq	Atulirumayain imavaluin utiqtittagani humi
0		

# Iqqakuq

## Ikkakunik Munakgiyauyunik

Havauhikhaq Hulilukaarut	Qanurittuq Iqqakut	Ihumagiyauyuq Qanuraaluktut Atuqtait	Qanuq Iqqakuurniarmangaa	Halummaqtirarnirutikhan piyutin
Information is not available				

### Avatiliriniqmut Ayurhautingit:

quarry will be excavated which will result in the soil and vegetation being disturbed. Once quarry is depleted, the edge of the quarry will be smooth out to prevent steep incline surfaces and the vegetation will grow back naturally over time.

# **Additional Information**

**SECTION A1: Project Info**

**SECTION A2: Allweather Road**

**SECTION A3: Winter Road**

**SECTION B1: Project Info**

**SECTION B2: Exploration Activity**

**SECTION B3: Geosciences**

**SECTION B4: Drilling**

**SECTION B5: Stripping**

**SECTION B6: Underground Activity**

**SECTION B7: Waste Rock**

**SECTION B8: Stockpiles**

**SECTION B9: Mine Development**

**SECTION B10: Geology**

**SECTION B11: Mine**

**SECTION B12: Mill**

**SECTION C1: Pits**

**SECTION D1: Facility**

**SECTION D2: Facility Construction**

**SECTION D3: Facility Operation**

**SECTION D4: Vessel Use**

**SECTION E1: Offshore Survey**

**SECTION E2: Nearshore Survey**

**SECTION E3: Vessel Use**

**SECTION F1: Site Cleanup**

**SECTION G1: Well Authorization**

**SECTION G2: Onland Exploration**

**SECTION G3: Offshore Exploration**

**SECTION G4: Rig**

**SECTION H1: Vessel Use**

**SECTION H2: Disposal At Sea**

**SECTION I1: Municipal Development**

**Qanurittuq Ittunik Avatinga: Avatingalluanga**

**Qanurittuq Ittunik Avatinga: Inuuhimayunut Avatinga**

**Qanurittuq Ittunik Avatinga: Inungit-maniliurutingit Avatinga**

**Miscellaneous Project Information**

**Naunaiyainiq ukuninnga Ayurhautingit unalu Piumayaat Ikikliyuumiutinahuarutit**

**Tamatkiumayunik Ihuikgutivaktunik**

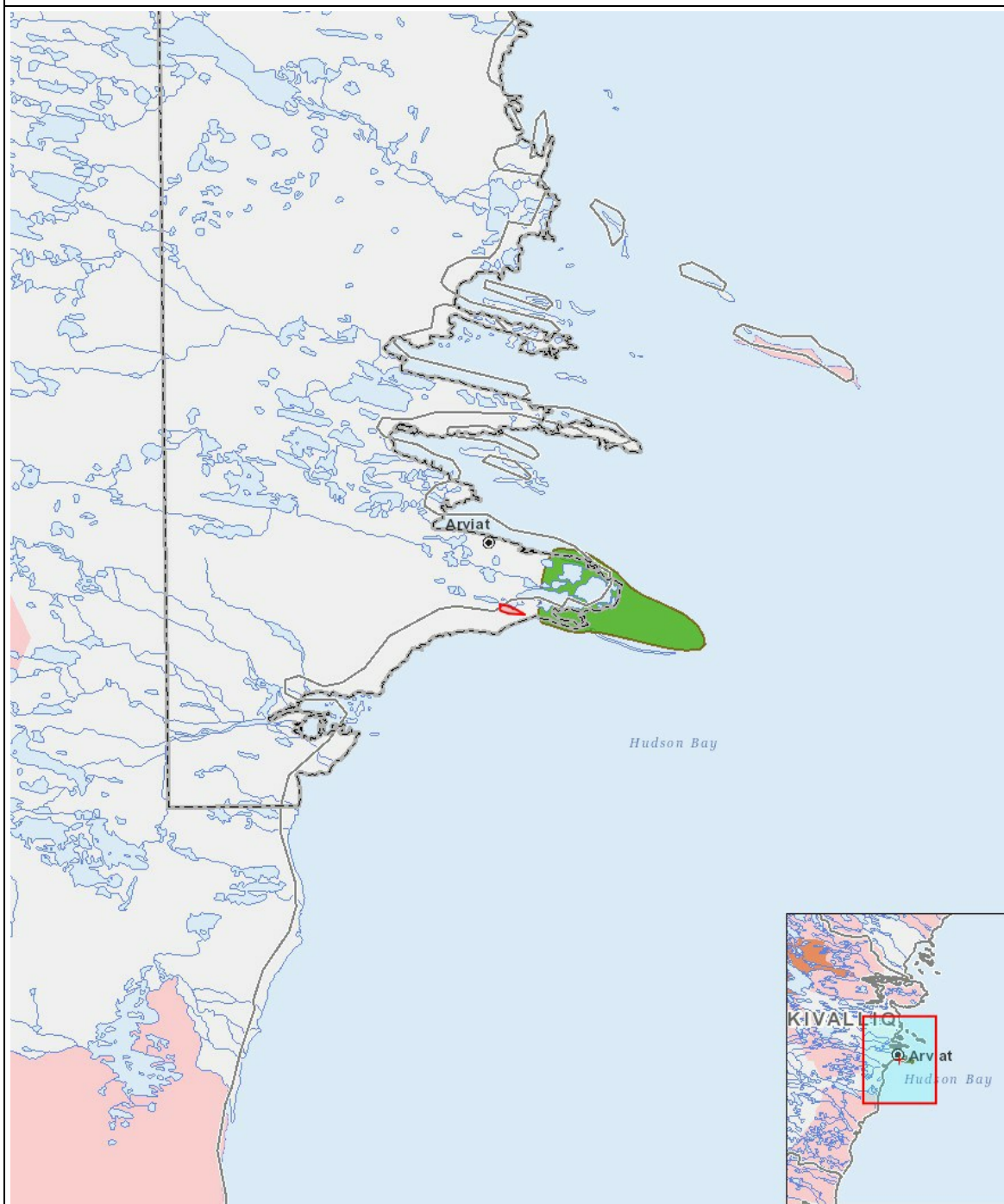
Impacts

Ilitariyauniq Avatiliriniqmut Ayurhautingit

		PHYSICAL	Designated environmental areas	Ground stability	Permafrost	Hydrology / Limnology	Water quality	Climate conditions	Eskers and other unique or fragile landscapes	Surface and bedrock geology	Sediment and soil quality	Tidal processes and bathymetry	Air quality	Noise levels	BIOLOGICAL	Vegetation	Wildlife, including habitat and migration patterns	Birds, including habitat and migration patterns	Aquatic species, incl. habitat and migration/spawning	Wildlife protected areas	SOCIO-ECONOMIC	Archaeological and cultural historic sites	Employment	Community wellness	Community infrastructure	Human health
Havakvinga																										
-		-	-	-	-	-	-	-	-	-	-	-	-	-	-	-	-	-	-	-	-	-	-	-	-	-
Aulapkaininnga																										
-		-	-	-	-	-	-	-	-	-	-	-	-	-	-	-	-	-	-	-	-	-	-	-	-	-
Piiqtauniq																										
-		-	-	-	-	-	-	-	-	-	-	-	-	-	-	-	-	-	-	-	-	-	-	-	-	-

(P = Nakuuyuq, N = Nakuungittut unalu mikhilimaittuq, M = Nakuungittut unalu mikhittaaqtuq, U = Naluyauyuq)

# Havaariyauyukhamut Nayugaa



## List of Project Geometries

1	polygon	Quarry site boundary
---	---------	----------------------