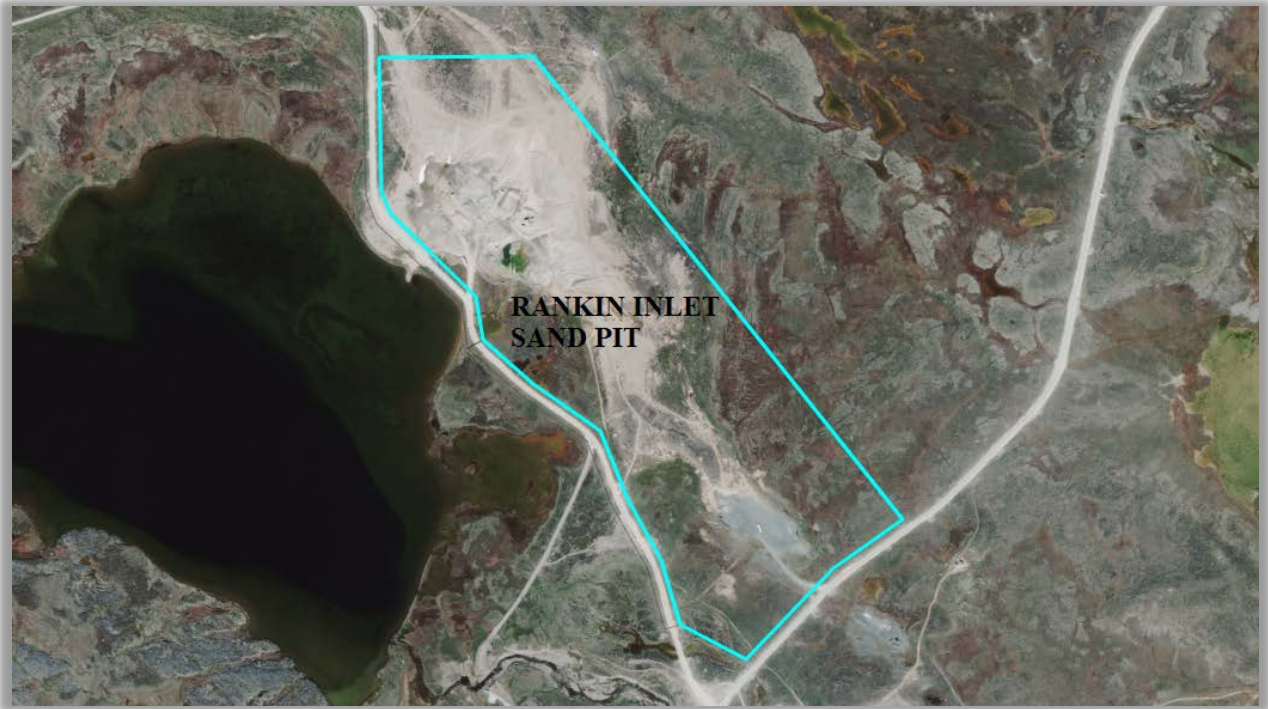


# **SPILL CONTINGENCY PLAN**

**Rankin Inlet Sand Pit**

**Lot 968 plan 4742**



Prepared for:  
Nunavut Impact Review Board  
29 Mitik Street, PO Box 1360  
Cambridge Bay, Nu  
X0B 0C0

Prepared on behalf of the Hamlet of Rankin Inlet by:  
Department of Community and Government Services  
Government of Nunavut  
P.O. Box 490  
Rankin Inlet, NU  
X0C 0G0

## **PURPOSE AND SCOPE**

This Spill Contingency Plan (SCP) clearly identifies potential spill risks associated with operation of the Rankin Inlet Sand Pit, and identifies procedures facilitating deployment of resources to minimize impacts and environmental risks.

It is understood and expected that contractors will have in place inspection and maintenance regimes for any equipment used on-site. This will be the first level of preventive measures to reduce spill risk of substances such as diesel.

## **IDENTIFICATION OF HAZARDOUS MATERIALS**

Mobile equipment used during the operation of the Sand Pit such as Track Excavators, Loaders, Dump Trucks, and a Screener will come equipped with diesel tanks. The tank capacity is:

- Track Excavator: 600 litres.
- Loader: 567 litres.
- Dump Truck: 567 litres.
- Screener: 276 litres.

## **ASSOCIATED RISKS**

Risks associated with the occurrence of spills include:

- Environmental pollution/degradation.
- Human exposure through inhalation of diesel fumes possibly resulting in illness.
- Slips, possibly resulting in personal injury.
- Fire.

To minimize spill occurrence, it is important to ensure that:

- Equipment is properly maintained, preventing leaks.
- Spill kits are accessible.
- Operational area within the Sand Pit is clear of obstructions, boulders or debris that have the potential to puncture diesel tanks.
- Deep ditches are filled to prevent mobile equipment collapse, which may result in the diesel tank being crushed.
- Prompt and effective clean-up is initiated in the event of a spill.

## **EMERGENCY ORGINZATION AND RESPONSILBITIES**

The local Hamlet and private contractors will use the Sand Pit as a resource for construction activity. Each will use their own mobile equipment. The Hamlet will follow the guidelines and procedures outlined in this SCP. Due to the limited capacity and resources at the local level, supervision of private contractors may not occur. To mitigate this, quarry permits issued by the Hamlet to the contractors will require that they follow the procedures and practices outlined in this SCP.

In the event of a spill, the initial actions to be taken by the person on site (private contractor or Hamlet employee) will be as follows:

- Assess the initial severity of the spill and safety concerns. If there is a risk of the diesel igniting, then warn all personnel to evacuate the area.
- Identify the source of the spill.
- Arrange for appropriate mobile equipment to be shut down, and if applicable, contain the spill and remove any sources of ignition.
- If it is a private contractor who located the spill, they must immediately contact the Hamlet's Senior Administrative Officer (SAO) and their supervisor, or as soon as possible.
- If warranted, apply First-Aid to any injured personnel and contact emergency services.

### **RESPONSIBILITIES OF THE PRIVATE CONTRACTOR AND HAMLET**

Any private contractor employee must immediately, or as soon as its safe, contact their supervisor and the Hamlet with the following information:

- Name of the person who discovered the spill.
- The time of the incident.
- The location of the incident.
- The quantity of the diesel/gasoline spilled.
- The cause of the spill, if known at the time.
- The current weather conditions.
- Any perceived potential for hazard, and any injury to people, wildlife, or the marine environment.
- Whether a fire hazard exists.
- Any actions already taken.
- Any persons already notified.

The Hamlet employee on site will follow the same procedures listed above with the difference that they instead contact the SAO.

### **RESPONSIBILITIES OF THE SUPERVISOR**

The private contractor supervisor or the SAO shall immediately contact Nunavut's 24-hour spill line at (867) 920-8130. The supervisor or the SAO shall then plan for the disposal of recovered diesel, cleanup, and restoration. These activities may include:

- If injury occurred, contact emergency services.
- Consult with appropriate environmental service representative(s) to determine the best course of action for the restoration of the spill site.
- Provide the resources needed to cleanup the spill, such as equipment, materials, tools, and protective gear.
- Inform the public what occurred and the possible dangers of the spill. This can be done through local radio and social media.

they shall also prepare a spill report, which can be obtained from the Government of Nunavut-Department of Environment website:

<https://www.gov.nu.ca/sites/default/files/NT%20NU%20Spill%20Report%20Form.pdf>

A complete log of events, activities undertaken during and after the spill, and photographs if possible, shall be made available for legal purposes and critical review.

### **SPILL CLEANUP**

The entity liable for the spill shall be responsible for remediation. Subject to the direction provided by the Department of Environment, remediation may involve the following:

- All contaminated gravel shall be excavated and placed into waste bulk bags or removed using absorbent pads;
- Depending on availability, the contaminated gravel shall either be transported to the Rankin Inlet land farm located on lot 966 and 967 plan 4741 or stored in isolation away from public access to be then transported by ship to a southern remediation facility; and
- If required by the Department of Environment, an environmental assessment shall be completed.

### **CONTACT INFORMATION**

Hamlet- Senior Administrative Officer	867-645-2895
RCMP	867-645-1111
Fire Department/Ambulance	867-645-2525
Hospital	867-645-8300
24-hour spill line	867-920-8130