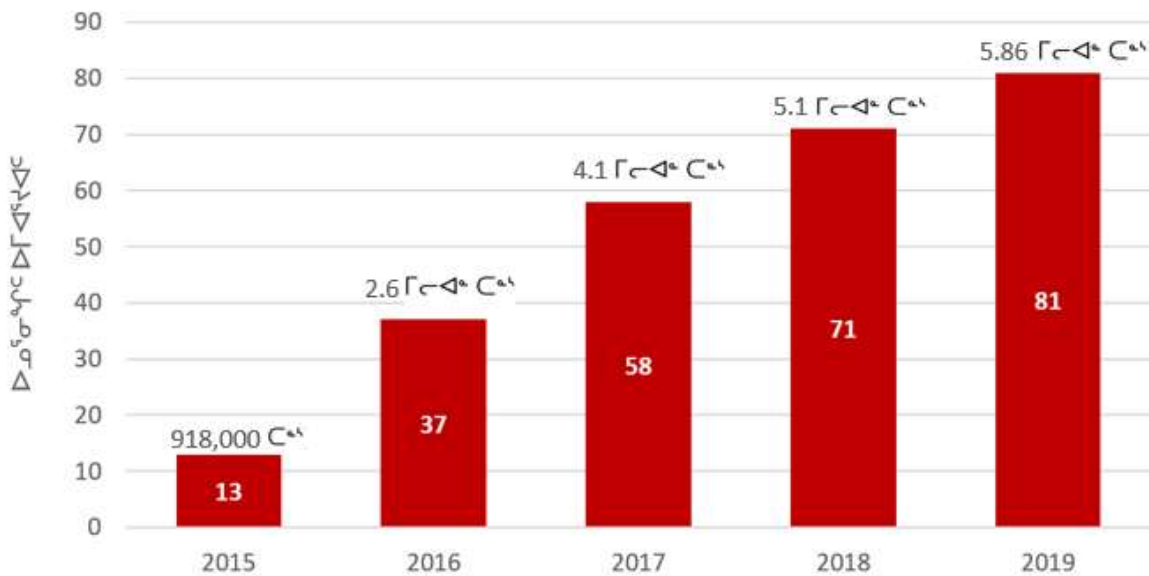


[illegible]

Γ<sup>ς</sup>ΠΛC<sup>ς</sup> – Δ<sup>ς</sup>Π<sup>ς</sup> 25, 2020

# 2015-2019: ᖃᕐᕈᐅᕐᕐ ᕐᕈᕐᕐᕐ ᕐᕈᕐᕐᕐ ᕐᕈᕐᕐᕐ ᕐᕈᕐᕐᕐᕐᕐ





[illegible]

◀▶<sup>5b</sup> ΛΓ◀<sup>5b</sup><◀◀◀◀◀◀<sup>a</sup>◀◀<sup>c</sup> ◀◀Δ<sup>a</sup>◀◀<sup>c</sup>

- [illegible]

የድርጅቱ ስልክ፡ 0111111111

- [illegible]



2019 ၎်ၵၶၶၶၶ  
 ၵၶၶၶၶၶၶၶ ၵၶၶၶ ၵၶၶၶၶ

$\lambda^a \sigma^c \triangleright \gamma^b C^{cb} C \triangleright \gamma^c \sigma^c \triangleright \gamma^b C^c C^{cb} \triangleright C \triangleright \Gamma \triangleleft \gamma^c \triangleleft C$

- [illegible]

$$\Lambda^{\mathfrak{f}} d\sigma^b \triangleleft^{\mathfrak{f}} \mathfrak{z}^{\mathfrak{b}} \triangleright \Delta \sigma^{\mathfrak{f}} \mathfrak{J}^{\mathfrak{c}} \triangleleft \triangleright^{\mathfrak{c}} \mathfrak{z}^{\mathfrak{b}} \mathfrak{N}^{\mathfrak{c}} \mathfrak{N}^{\mathfrak{c}} / \Lambda^{\mathfrak{f}} d\sigma^b \triangleright \mathfrak{f}^{\mathfrak{c}} \triangleright \mathfrak{f}^{\mathfrak{c}} \mathfrak{z}^{\mathfrak{b}} \mathfrak{z}^{\mathfrak{b}}$$

- 9- $\omega$ PC/ $\Lambda$ CP
- 3- $\omega$ PC  $\triangleright$   $\delta$ LD $\Delta$  $\supset$  $\sigma^b$   $\triangleright$ PC

$$\Delta L \triangleright \sigma^a \sigma^b \triangleright \rho^c \triangleright \Gamma \triangleleft^a \rho^c \triangleleft^c$$

- [illegible]





2019 ၎်ၵၶၶၶၶ  
 ၵၶၶၶၶၶၶၶ ၵၶၶၶ ၵၶၶၶၶ

$\triangleright \Gamma \triangleleft^c \nabla \triangleleft^c$   $e p^{cb} h^c \sigma^a r^a \sigma^b$   $\triangleleft \triangleright \epsilon^c n \sigma^{cb} \Delta^a e^{cb} \triangleright^c$

- [illegible]

▷Γ◁<sup>ϕ</sup>◁<sup>ϕ</sup>Γ<sup>c</sup>▷Γ<sup>b</sup> ΔL<sup>ϕ</sup>Γ<sup>b</sup> <sup>ϕ</sup>▷Λ<sup>ϕ</sup>Δσ<sup>ϕ</sup>◁<sup>ϕ</sup>Δ<sup>a</sup>Δ<sup>ϕ</sup>▷<sup>c</sup>

- [illegible]

$\Delta^{<\zeta} \partial \Pi \subset \triangleright \Pi \sigma^{\zeta_b}$ 
 $\triangleright \Gamma \Delta^{\zeta} \nabla \Delta^{<\zeta} \Delta^{<\zeta} \partial \Pi^{\omega} \Gamma^{\omega} \sigma^{\zeta}$

- ረፍጥረው የሚገኝ የፕላንና ስኬት ለፍጥነትና ለጥራት የሚያገለግል የBIM-  
dፎር።
- ለፕላንና ስኬት ለፍጥነትና ለጥራት የሚያገለግል የBIM-  
dፎር።
- ለፕላንና ስኬት ለፍጥነትና ለጥራት የሚያገለግል የBIM-  
dፎር።
- ለፕላንና ስኬት ለፍጥነትና ለጥራት የሚያገለግል የBIM-  
dፎር።

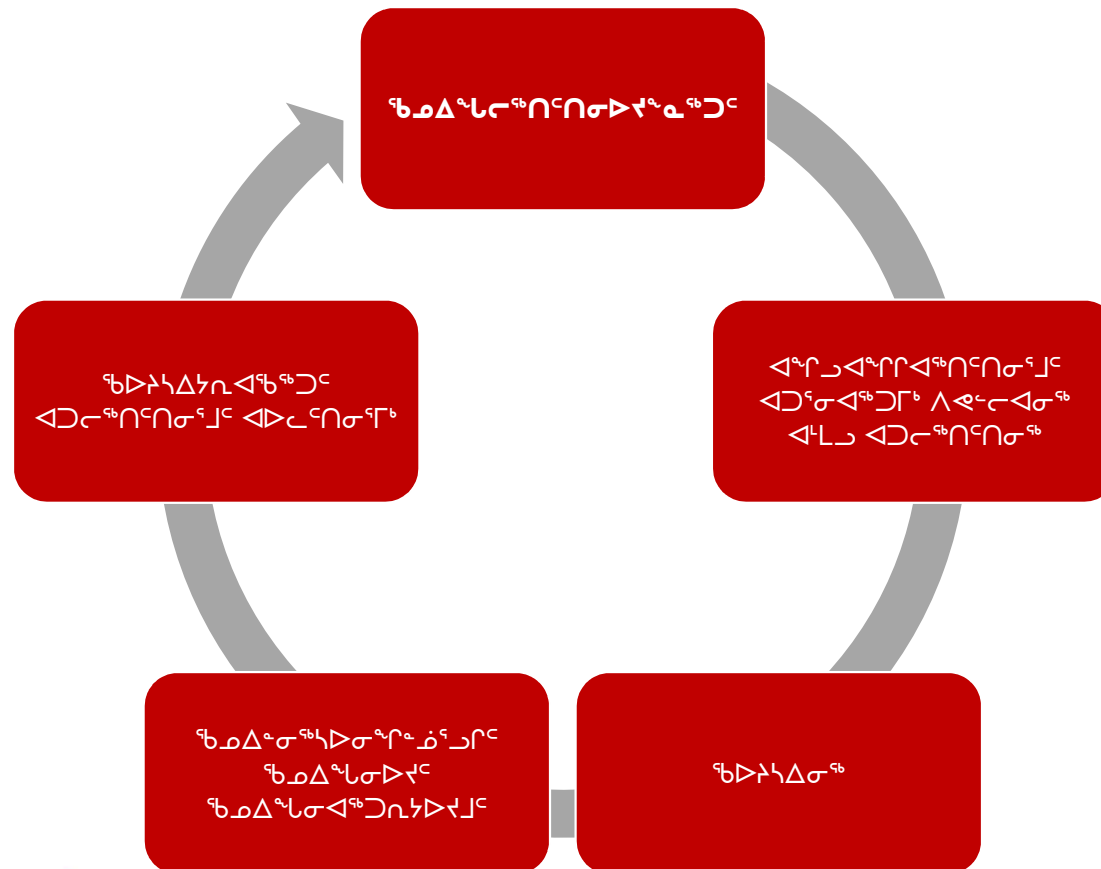




▷ΓΔ<sup>c</sup>Δσ<sup>b</sup>  
Δ▷Δ<sup>c</sup>Πσ<sup>c<sub>b</sub></sup> Δ<sup>L</sup>Δ  
Δ<sup>a</sup>ΓΔ<sup>a</sup>ΓΓΔ<sup>c<sub>b</sub></sup>Π<sup>c</sup>Πσ<sup>c</sup> j<sup>a</sup>Δ<sup>c</sup>



ካዲጋር ስፖንሰርሽፕ ስምምነት ለፖለቲካ ምክር ቤት ለመስጠት  
 ለሚገባው ስምምነት ስምምነት







[illegible]

- ሥራ ረጅሙ 9 ሰዓት ነው ለሰራተኛው ስራ ምክንያት ሆኖ ማሳደግ ይቻላል
- ስራ ለማድረግ ለሚችሉ ሰራተኞች ለሰራተኛው ስራ ምክንያት ሆኖ ማሳደግ ይቻላል
- ለሰራተኛው ስራ ምክንያት ሆኖ ማሳደግ ይቻላል ለሰራተኛው ስራ ምክንያት ሆኖ ማሳደግ ይቻላል

ለጥናቱ የተገለጹ የጭነት መጠኖች	%-ኢንሰርፕሽን ስኬት ንጥል <9 knots	%-ኢንሰርፕሽን ስኬት ንጥል <10 knots
ጥንቃቄ ማስገባት	99.3	99.9
የጭነት መጠን ማስገባት	93.6	99.3
የጭነት መጠን ማስገባት	98.2	99.4
የጭነት መጠን ማስገባት	94.5	99.0
MSV Botnica የጭነት መጠን ማስገባት	99.7	99.9
የጭነት መጠን ማስገባት	97.8	99.2

[illegible][illegible]

ԴՐԵՐՎՋԻՐԸ  
 ԿԵՐՈՒԹԱՃՈՐԸ ΔԼՏ  
 ՇԼՏԴԱՇՐԸ ԾՏԵ  
 ԻԼԷՏԵ

- [illegible]





$\wedge C^{\mathfrak{b}} C \Delta_{\mathfrak{c}} \cap^{\mathfrak{c}} \cap \sigma^{\mathfrak{b}} \quad C \dot{L} \sigma^{\mathfrak{c}} \Gamma \triangleright C \triangleright^{\mathfrak{c}} \Gamma^{\mathfrak{c}} \supset \sigma^{\mathfrak{b}} \quad \triangleright L \nless \sigma^{\mathfrak{b}}:$   
 $\triangleright \Gamma \triangleleft^{\mathfrak{c}} \nless \triangleleft^{\mathfrak{c}} \dot{\Gamma}^{\mathfrak{c}} \supset \Gamma^{\mathfrak{b}} \quad \Delta L^{\mathfrak{c}} \Gamma^{\mathfrak{b}} \quad \triangleleft \triangleright_{\mathfrak{c}}^{\mathfrak{c}} \cap \sigma^{\mathfrak{b}}$

[illegible]

- [illegible]

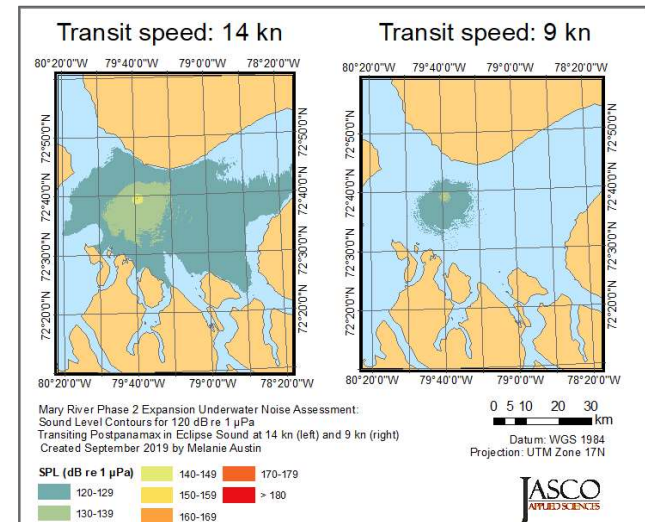
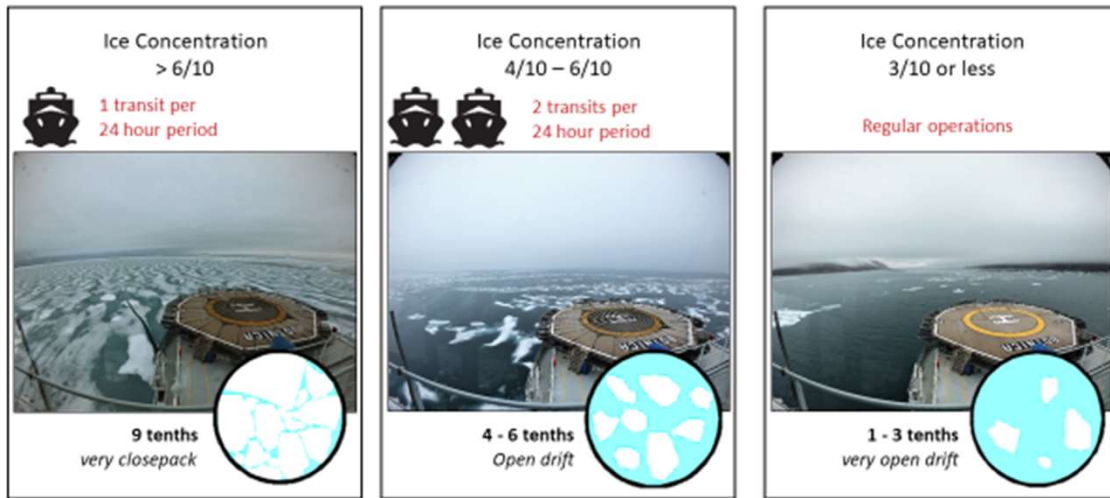
BIM- $d^c$   $\triangleright^{\omega} \dot{C}_\omega^c \triangleleft D^c b^c C^c b^c C^c L^c e \triangleleft^L L_\omega \triangleright^{\omega} n^c r^c_\omega \omega^c b_e C \triangleright^c L^c r^c L^c \dot{c}^c r^c_\omega \sigma^c$ .

- [illegible]

[illegible]

$\sigma_{\Lambda} \approx \sigma_{\Lambda} \approx \sigma_{\Lambda} \approx \sigma_{\Lambda}$   
 $\sigma_{\Lambda} \approx \sigma_{\Lambda} \approx \sigma_{\Lambda} \approx \sigma_{\Lambda}$   
 $\sigma_{\Lambda} \approx \sigma_{\Lambda} \approx \sigma_{\Lambda} \approx \sigma_{\Lambda}$   
 $\sigma_{\Lambda} \approx \sigma_{\Lambda} \approx \sigma_{\Lambda} \approx \sigma_{\Lambda}$

1. የዕድሜ ልዩነት
2. 9 knot-ጥንቃቄ ማስፈራረም
3. ስሜት ማስፈራረም







2019 წ. ცნობილი  
ბიზნესის რეპორტი



# 2019 ԸՆԹՐՈՒՄԻ ԵՆԴՈՒՄԻ ՈՐՈՇՊՈՐՏ

## ՎՊԵՆ ԴԵՐՄԻՆԻ ԴԵՐՄԻՆԻ ԸՆԹՐՈՒՄԻ ԴԵՐՄԻՆԻ

- ԴԵՐՄԻՆԻ ԴԵՐՄԻՆԻ ԴԵՐՄԻՆԻ ԸՆԹՐՈՒՄԻ (ԸՆԹ 2019)
- ՎԵՐՄԻՆԻ ԴԵՐՄԻՆԻ ԴԵՐՄԻՆԻ
- ԴԵՐՄԻՆԻ ԴԵՐՄԻՆԻ ԸՆԹՐՈՒՄԻ ԸՆԹՐՈՒՄԻ ԸՆԹՐՈՒՄԻ

## ԴԵՐՄԻՆԻ ԴԵՐՄԻՆԻ ԸՆԹՐՈՒՄԻ ԸՆԹՐՈՒՄԻ

- ԵՐՄԻՆԻ ԸՆԹՐՈՒՄԻ
- ԸՆԹՐՈՒՄԻ ԸՆԹՐՈՒՄԻ 2018 ԸՆԹՐՈՒՄԻ 2019 ԸՆԹՐՈՒՄԻ
  - ԸՆԹՐՈՒՄԻ ԸՆԹՐՈՒՄԻ
  - ԸՆԹՐՈՒՄԻ ԸՆԹՐՈՒՄԻ
- ԸՆԹՐՈՒՄԻ ԸՆԹՐՈՒՄԻ ԸՆԹՐՈՒՄԻ ԸՆԹՐՈՒՄԻ ԸՆԹՐՈՒՄԻ ԸՆԹՐՈՒՄԻ 2019 ԸՆԹՐՈՒՄԻ 2020 ԸՆԹՐՈՒՄԻ
- ԸՆԹՐՈՒՄԻ ԸՆԹՐՈՒՄԻ ԸՆԹՐՈՒՄԻ ԸՆԹՐՈՒՄԻ ԸՆԹՐՈՒՄԻ ԸՆԹՐՈՒՄԻ ԸՆԹՐՈՒՄԻ
- ԸՆԹՐՈՒՄԻ ԸՆԹՐՈՒՄԻ ԸՆԹՐՈՒՄԻ ԸՆԹՐՈՒՄԻ ԸՆԹՐՈՒՄԻ ԸՆԹՐՈՒՄԻ ԸՆԹՐՈՒՄԻ



# 2019ᐅ ᑕᓕᐅᑦᓄᑦ ᑲᓕᓕᑦᓂᑦ ᓕᑕᐅᑦᓂᑦ

## ᐅᑦᑕᑦᑕᑦᑕᑦ ᑕᑕᑕᑦᓂᑦ

- ᑕᑕᑕᑦᑕᑦ ᑕᑕᑕᑦᑕᑦ ᓄᑦᑕᑦᑕᑦᑕᑦᑕᑦᑕᑦ
- ᐅᑦᑕᑦ ᑕᑕᑕᑦ ᐅᑦᑕᑦᑕᑦ ᑕᑕᑕᑦᑕᑦᑕᑦᑕᑦᑕᑦ
- ᑕᑕᑕᑦᑕᑦ ᑕᑕᑦ ᑕᑕᑕᑦᑕᑦᑕᑦᑕᑦ
- ᑕᑕᑦ ᑕᑕ ᑕᑕᑕᑦᑕᑦ ᑕᑕᑕᑦᑕᑦ
- ᑕᑕᑕᑦᑕᑦᑕᑦ 40 ᑕᑕᑕᑦᑕᑦ ᐅᑕᑕᑦᑕᑦᑕᑦᑕᑦᑕᑦ

## ᑕᑕᑕᑦᑕᑦ ᑕᑕᑕᑦᑕᑦᑕᑦ

- ᑕᑕᑕᑦᑕᑦ ᑕᑕᑕᑦ ᐅᑕᑕᑦᑕᑦᑕᑦᑕᑦᑕᑦ ᑕᑕᑕᑦ 2019ᐅ 2020ᐅ
- ᑕᑕᑕᑦᑕᑦ ᑕᑕᑕᑦᑕᑦᑕᑦᑕᑦ ᑕᑕᑕᑦᑕᑦᑕᑦ ᑕᑕᑕᑦᑕᑦ







2019  
ርከፎሽ ልጋሪላኛ ሊሰሩ  
ኑኑ



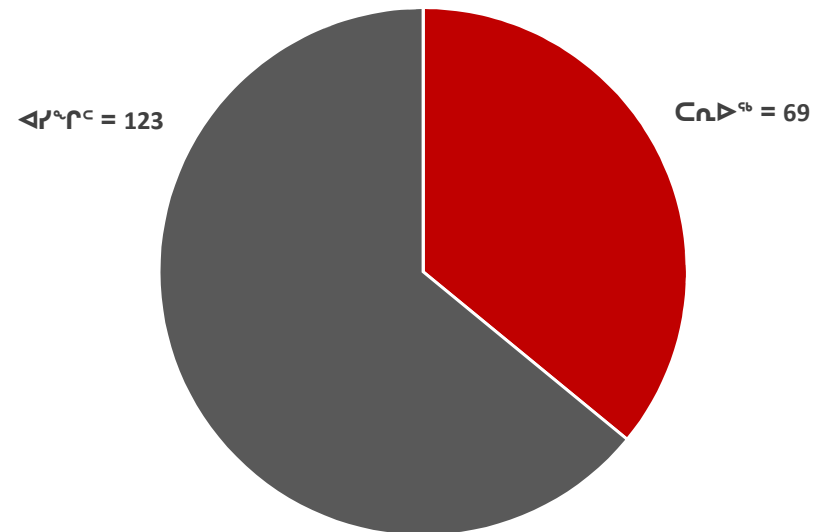
ᑲᑎᓪᓗᑦ 184 (+8) ᐅᓗᑦᓂᐸᐸᐸ ᐸᑦᑲᑦᑲᑦᑲᑦ

• ᑕᑎᐅᑦ = 69/192

- ᑕᑎᐅᑦ ᐸᑦᑲᑦᑲᑦᑲᑦ
- >ᐸᑦ
- ᐸᑦᑲᑦᑲᑦᑲᑦ ᑦᑲᐅᓗᑦᑲᑦᑲᑦ

• ᐸᑦᑲᑦᑲᑦᑲᑦ = 123/192

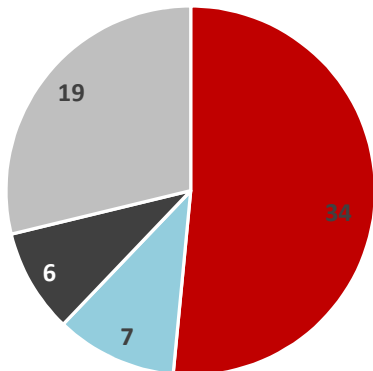
- ᐸᑦᑲᑦᑲᑦᑲᑦ ᐸᑦᑲᑦᑲᑦᑲᑦ = 77
- ᐸᑦᑲᑦᑲᑦᑲᑦ-ᐸᑦᑲᑦᑲᑦᑲᑦ = 41
- ᐸᑦᑲᑦᑲᑦᑲᑦ = 5



ᐸᑦᑲᑦᑲᑦᑲᑦᑲᑦ ᐅᐅᑦᑲ ᐸᑦᑲᑦᑲᑦᑲᑦᑲᑦ- ᐸᑦᑲᑦᑲᑦᑲᑦ  
ᐸᑦᑲᑦᑲᑦᑲᑦᑲᑦ ᑲᑎᐸᑦᑲᑦ 005 ᐸᑦᑲᑦᑲᑦᑲᑦ

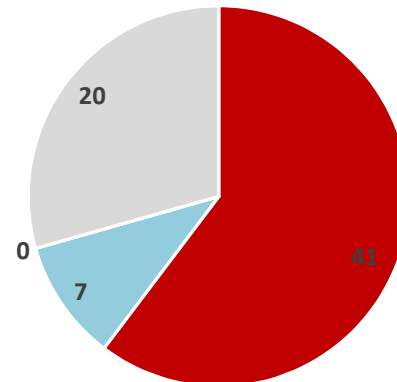
# 2017 ᐱᕐᕈᕐ 2019 ᑕᐅᐅᕐ ᑭᐅᐅᕐᕐ - ᐅᕐᕐᕐᕐᕐ ᐅᕐᕐᕐᕐ

2017



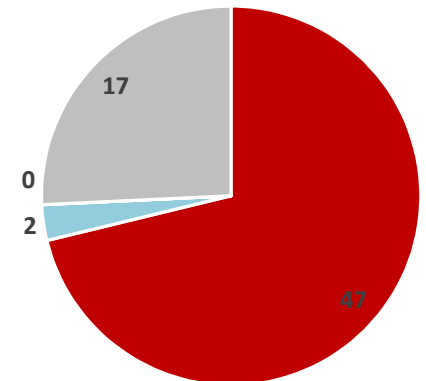
- ᐅᕐᕐᕐᕐᕐ
- ᐅᕐᕐᕐᕐᕐ ᐅᕐᕐᕐᕐ
- ᐅᕐᕐᕐᕐ
- ᐅᕐᕐᕐᕐᕐᕐᕐᕐᕐᕐᕐᕐᕐ

2018



- ᐅᕐᕐᕐᕐᕐ
- ᐅᕐᕐᕐᕐᕐ ᐅᕐᕐᕐᕐ
- ᐅᕐᕐᕐᕐ
- ᐅᕐᕐᕐᕐᕐᕐᕐᕐᕐᕐᕐᕐᕐ

2019



- ᐅᕐᕐᕐᕐᕐ
- ᐅᕐᕐᕐᕐᕐ ᐅᕐᕐᕐᕐ
- ᐅᕐᕐᕐᕐ
- ᐅᕐᕐᕐᕐᕐᕐᕐᕐᕐᕐᕐᕐᕐ





ՃԴՎԻՂՎԸ ՈՐԳԱՆԿՈՒՆԴՐԸ  
ՇԿՆԵՐԱՆՈՅԸ

CLΔ<sup>a</sup>⊂▷Γ◁<sup>c</sup>◁<sup>b</sup>ΠP<sup>b</sup>C<sup>b</sup>Π<sup>c</sup>↗<sup>c</sup>▷L<sup>b</sup>C▷Π<sup>c</sup>ℓ<sup>c</sup>

- [illegible]



4-A-17-2020

$\Delta^{\circ} \text{f}_{\text{H}_2\text{O}} = -286 \text{ kJ/mol}$

ፖርታጋል፣ ሶፊያ  
ልዩ/ዩሮፒያን ፖሊስ ፖርታጋል

Δ<sup>10</sup>-L: 2020-07-07 Δ<sup>10</sup>-L: 2020-07-07

$$\Delta c^+ a n^b \Delta^b V^a \Delta^a \sigma^c \Phi_L \Gamma_C \Delta V^b \Phi^c,$$

© 2020 The Author(s). Published by John Wiley & Sons Ltd

[illegible][illegible]

$\frac{d\Delta \hat{\alpha}^{(k)}}{dt}/L^C \geq \Gamma_0$   $D/b^{(k)}CCD^{(k)}b^{(k)}\Gamma_0 \leq \Gamma_C$   $\exists \lambda D/L^C b^{(k)}\Gamma_0 C D^{(k)} L^C$   $d^{(k)} p_i C D^{(k)}/L^C$

[illegible]

2020-ፖረታዊ ምርት /ጥሬ ስኬት/ፖረታዊ ምርት የፈለጉትን ደረጃ

[illegible][illegible][illegible][illegible]

ADP5D6L7 D/b<sup>10</sup>C<sup>10</sup>J<sup>10</sup> b<sup>10</sup>d<sup>10</sup>a<sup>10</sup>s<sup>10</sup>r<sup>10</sup>o<sup>10</sup>e D<sup>10</sup>Δ<sup>10</sup> /g<sup>10</sup>c<sup>10</sup>l<sup>10</sup>u<sup>10</sup>e A<sup>10</sup>d<sup>10</sup>

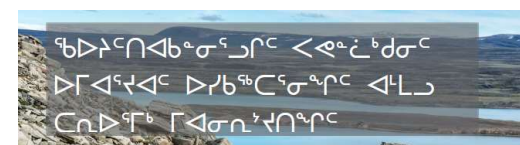
[illegible]

የህዝብ (140-150 ሺህ ልዩነት)፣ የሕይወት ለህሊና ይገባሉ ሙሉ

7. செய்து கொடுக்கப்பட்ட பின்வரும் விவரங்களைப் படித்துக் கொள்ளவும்.

[illegible][illegible][illegible][illegible]

കുല മെമ്പർ ഫിനാൻസ് ഓഫീസർ.

[illegible][illegible][illegible][illegible]



▷▷▷▷▷ ስዋሽጥጥጥጥጥጥ ስዋሽጥጥጥጥጥ ስዋሽጥጥጥጥጥ

[illegible]

2.  $\angle A \cong \angle D$ ,  $\angle B \cong \angle E$ ,  $\angle C \cong \angle F$ ,  $\angle G \cong \angle H$ ,  $\angle I \cong \angle J$ ,  $\angle K \cong \angle L$



## ▷▷▷▷▷ ሰዎችና ሥራዎች

1. ጋህቢብናሰራሽጋሽጋሽ ሥራዎች ለሥራዎች ሰዎችና ሥራዎች ለሥራዎች ሰዎችና ሥራዎች
  2. ለሥራዎች ሰዎችና ሥራዎች ለሥራዎች ሰዎችና ሥራዎች ለሥራዎች ሰዎችና ሥራዎች
  3. \*\*\* ለሥራዎች ሰዎችና ሥራዎች ለሥራዎች ሰዎችና ሥራዎች ለሥራዎች ሰዎችና ሥራዎች \*\*\*
- \*\*\* ለሥራዎች ሰዎችና ሥራዎች ለሥራዎች ሰዎችና ሥራዎች ለሥራዎች ሰዎችና ሥራዎች \*\*\*







ᑭᓚᓕᓐᑦᑦᑦᑦᑦᑦ ᑦᑦᑦᑦᑦᑦᑦᑦ

# What is Baffinland doing when ice is present?

- [illegible]

ᐅᐱᐅᑦᐱᐅᑦ ᐱᑲᑲᑦᐱᑦᐱᑦ ᐅᐱᐅᑦ ᐅᑲᑲᑦᐱᑦᐱᑦ

[illegible]

- $\Delta \Gamma \nabla \epsilon \nabla \epsilon$  ( $\Delta \Gamma \nabla \epsilon \nabla \epsilon$ )  $\Gamma \nabla \epsilon \nabla \epsilon$
- $\Delta \Gamma \nabla \epsilon \nabla \epsilon$   $\Delta \Gamma \nabla \epsilon \nabla \epsilon$   $\Delta \Gamma \nabla \epsilon \nabla \epsilon$   $\Delta \Gamma \nabla \epsilon \nabla \epsilon$

፪፻፱ ለጥሪ ልቢነብሪ፡፡

- ርዕሱን ያሳያል ምክር ቤቱ የሚሰጠውን ማስረጃ ለራሱ ማረጋገጥ ይጠቀማል።
- 2018 ዓ.ም. የሚከተለውን ማስረጃ ያቀረበው የሰነድ ቁጥር 9 ሲሆን የሰነዱ ዓላማ የሚገልጽበት ሲሆን፡
- የሰነዱ ዓላማ የሚገልጽበት ሲሆን፡
- የሰነዱ ዓላማ የሚገልጽበት ሲሆን፡
- የሰነዱ ዓላማ የሚገልጽበት ሲሆን፡



[illegible]

# ᄒᆞᆫ ᄂᆡᄇᆡᄂᆡ?

- [illegible]

ፍጹም ለጥራት ልዩነታችሁ?

- ድንገተኛ ምርጫ ምክር ቤቱ የሚገባበት የፆቃ ምርጫ ለሚኖሩ 40 የፖለቲካ ፎርም ምክር ቤቶች ይኖራል።
- የሚከተሉት ምክር ቤቶች የሚገቡበት ምክር ቤቱ ለሚከተሉት ምክር ቤቶች ይኖራል።
  - ለሚከተሉት ምክር ቤቶች የሚገቡበት ምክር ቤቱ ለሚከተሉት ምክር ቤቶች ይኖራል።
  - ለሚከተሉት ምክር ቤቶች የሚገቡበት ምክር ቤቱ ለሚከተሉት ምክር ቤቶች ይኖራል።
  - ለሚከተሉት ምክር ቤቶች የሚገቡበት ምክር ቤቱ ለሚከተሉት ምክር ቤቶች ይኖራል።
- ለሚከተሉት ምክር ቤቶች የሚገቡበት ምክር ቤቱ ለሚከተሉት ምክር ቤቶች ይኖራል።
  - ለሚከተሉት ምክር ቤቶች የሚገቡበት ምክር ቤቱ ለሚከተሉት ምክር ቤቶች ይኖራል።
  - ለሚከተሉት ምክር ቤቶች የሚገቡበት ምክር ቤቱ ለሚከተሉት ምክር ቤቶች ይኖራል።
  - ለሚከተሉት ምክር ቤቶች የሚገቡበት ምክር ቤቱ ለሚከተሉት ምክር ቤቶች ይኖራል።
  - ለሚከተሉት ምክር ቤቶች የሚገቡበት ምክር ቤቱ ለሚከተሉት ምክር ቤቶች ይኖራል።

# ᐃᐱᓂ ᑕᐱᓂᑦᑕᓂᐅᑦᑕ ᐅᐱᑦᑕ ᐱᑭᓂᐅᑦᑕ

## ᓂᓂᓂ ᑕᓂᓂᑕᑕᑕᑕ?

- ᐱᑕᓂᓂᐅᓂᓂ ᑕᐱᓂ ᓂᑕᓂᓂ ᐅᐱᑦᑕ ᓂᓂᓂᓂ ᑕᐱᓂᓂᓂ ᐅᐱᓂᓂᑕᑕᑕᑕ ᐅᑦᑕᑕᑕᑕ
- ᐃᑦᐱᑕᑕᑕ ᐱᑕᑕᑕ ᓂᑕᓂ ᐅᐱᑦᑕ ᐱᑕᓂᓂᐅᑦᑕ ᐱᑕᓂᓂᐅᑕᑕ ᐅᑦᑕᑕᑕᑕᑕ ᐅᑦᑕᑕᑕᑕ ᐅᑦᑕᑕᑕᑕ ᐅᑦᑕᑕᑕᑕ ᐅᑦᑕᑕᑕᑕ
- ᐃᐱᓂ ᐃᓂᓂᑦᑕᑕ ᐅᐱᑦᑕ ᓂᓂᓂᑕᑕᑕᑕ ᐃᑕᓂᑕᑕᑕ ᐃᓂᓂᑕ ᐃᐱᑕᑕᑕᑕ ᐅᑦᑕᑕᑕᑕᑕ

## ᓂᓂᓂ ᐱᑕᑕᑕ ᐃᑦᐱᑕᑕᑕᑕᑕ?

- ᐅᓂᓂᑕᑕᑕᑕᑕᑕ ᓂᑕᓂ ᐅᐱᑦᑕ ᑕᐱᓂᑕᑕᑕᑕᑕ ᐅᑕᑕᑕᑕᑕ ᐃᑕᓂᑕᑕᑕ ᐅᑕᑕᑕᑕᑕᑕᑕᑕ (Ragged Island) (ᓂᐅᐱᓂᑕᑕᑕᑕ: ᐃᑕᓂᑕᑕᑕᑕ ᐅᑕᑕᑕᑕᑕ ᐃᓂᓂ ᐃᐱᑕᑕᑕᑕᑕᑕ ᓂᓂᓂᑕᑕᑕ)
- ᓂᑦᐱᑕᑕᑕᑕᑕᑕᑕ ᐅᑕᑕᑕᑕᑕ ᐅᑕᑕᑕᑕᑕᑕᑕᑕ (ᐃᓂᓂᑕ ᐅᑕᑕᑕ ᐱᑕᓂᐅᑦᑕ), ᐅᑕᑕᑕᑕᑕ ᐃᓂᓂᑕᑕᑕᑕ ᐅᑕᑕᑕᑕᑕ ᐃᓂᓂᑕᑕᑕ ᓂᓂᓂᑕᑕᑕᑕᑕᑕᑕᑕᑕ, ᐅᑕᑕᑕᑕᑕ ᐅᓂᓂᑕᑕᑕᑕᑕᑕᑕ
- ᐱᑕᑕᑕᑕᑕᑕᑕᑕ ᐃᑕᑕᑕᑕᑕᑕᑕᑕ ᐃᑕᓂᑕᑕᑕ ᐃᑕᓂᓂ ᓂᐅᐱᓂᑕᑕᑕᑕᑕᑕᑕᑕ (ᓂᐅᐱᓂᑕᑕᑕᑕ: ᑕᐱᓂᓂ ᐃᑕᓂᑕᑕᑕᑕᑕ ᐃᑕᑕ ᐃᑕᑕᑕᑕᑕᑕ ᐱᓂᑕᑕᑕᑕ ᐱᓂᑕᑕᑕᑕ)

$$\triangleright \Delta^c \quad bC^a \sigma^a r^c$$

**ᄃᆞᆫ ᄇᆡᆯᆫ ᄂᆡᆺᆫ?**

- $\langle \Delta \Delta \rangle^{\text{qb}} \supset \langle \Delta \Delta \rangle^{\text{c}} \supset \langle \Delta \Delta \rangle^{\text{d}} \supset \langle \Delta \Delta \rangle^{\text{e}} \supset \langle \Delta \Delta \rangle^{\text{f}} \supset \langle \Delta \Delta \rangle^{\text{g}} \supset \langle \Delta \Delta \rangle^{\text{h}} \supset \langle \Delta \Delta \rangle^{\text{i}} \supset \langle \Delta \Delta \rangle^{\text{j}} \supset \langle \Delta \Delta \rangle^{\text{k}} \supset \langle \Delta \Delta \rangle^{\text{l}} \supset \langle \Delta \Delta \rangle^{\text{m}} \supset \langle \Delta \Delta \rangle^{\text{n}} \supset \langle \Delta \Delta \rangle^{\text{o}} \supset \langle \Delta \Delta \rangle^{\text{p}} \supset \langle \Delta \Delta \rangle^{\text{q}} \supset \langle \Delta \Delta \rangle^{\text{r}} \supset \langle \Delta \Delta \rangle^{\text{s}} \supset \langle \Delta \Delta \rangle^{\text{t}} \supset \langle \Delta \Delta \rangle^{\text{u}} \supset \langle \Delta \Delta \rangle^{\text{v}} \supset \langle \Delta \Delta \rangle^{\text{w}} \supset \langle \Delta \Delta \rangle^{\text{x}} \supset \langle \Delta \Delta \rangle^{\text{y}} \supset \langle \Delta \Delta \rangle^{\text{z}}$

፳፱፻፳፱ ለጥሪ ልዩነቶች?

- [illegible]



▷Γ◁<sup>q</sup>↯◁<sup>c</sup> ◁▷<sub>c</sub>◁▷σ<sup>q</sup>↯

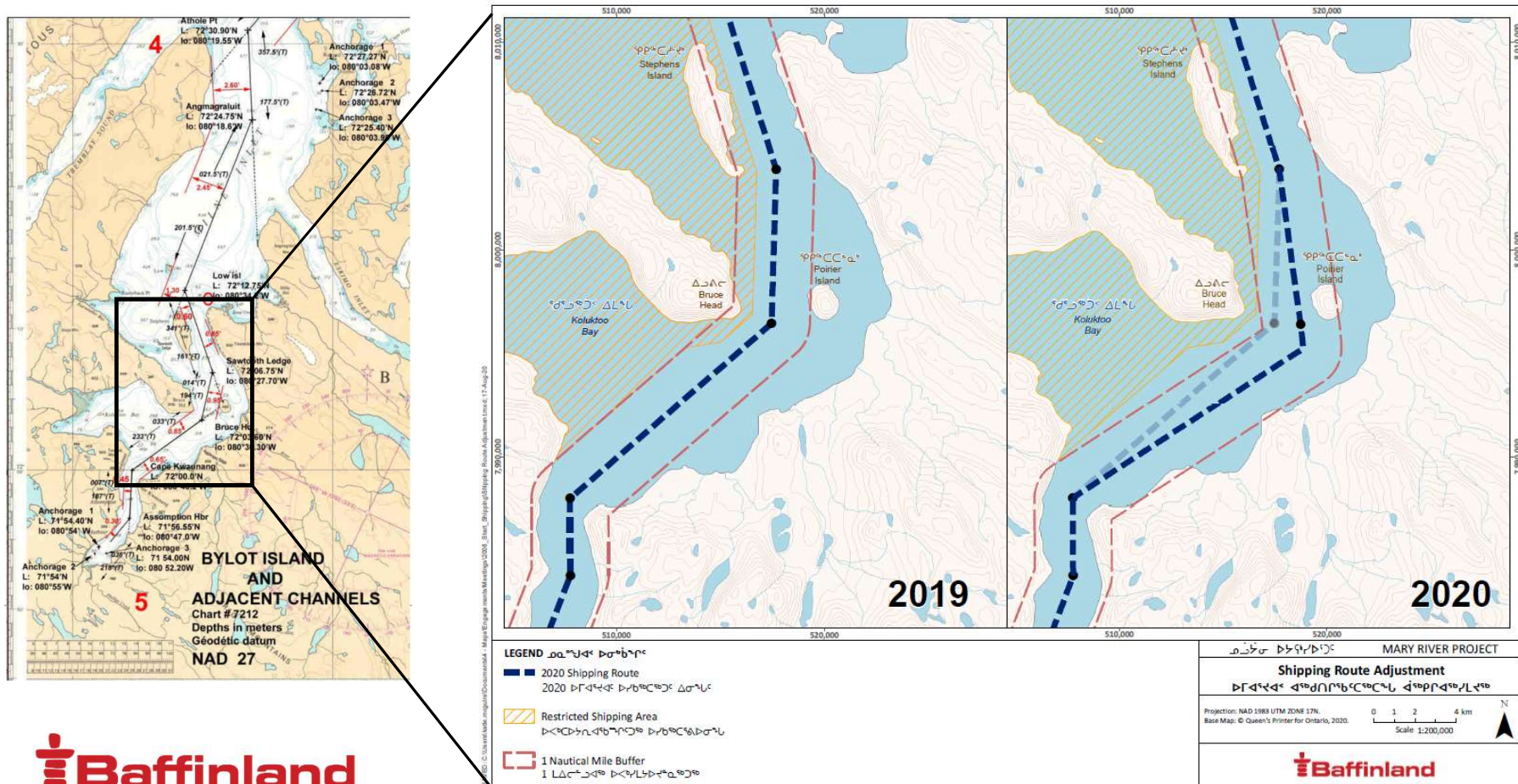
[illegible]

- [illegible]

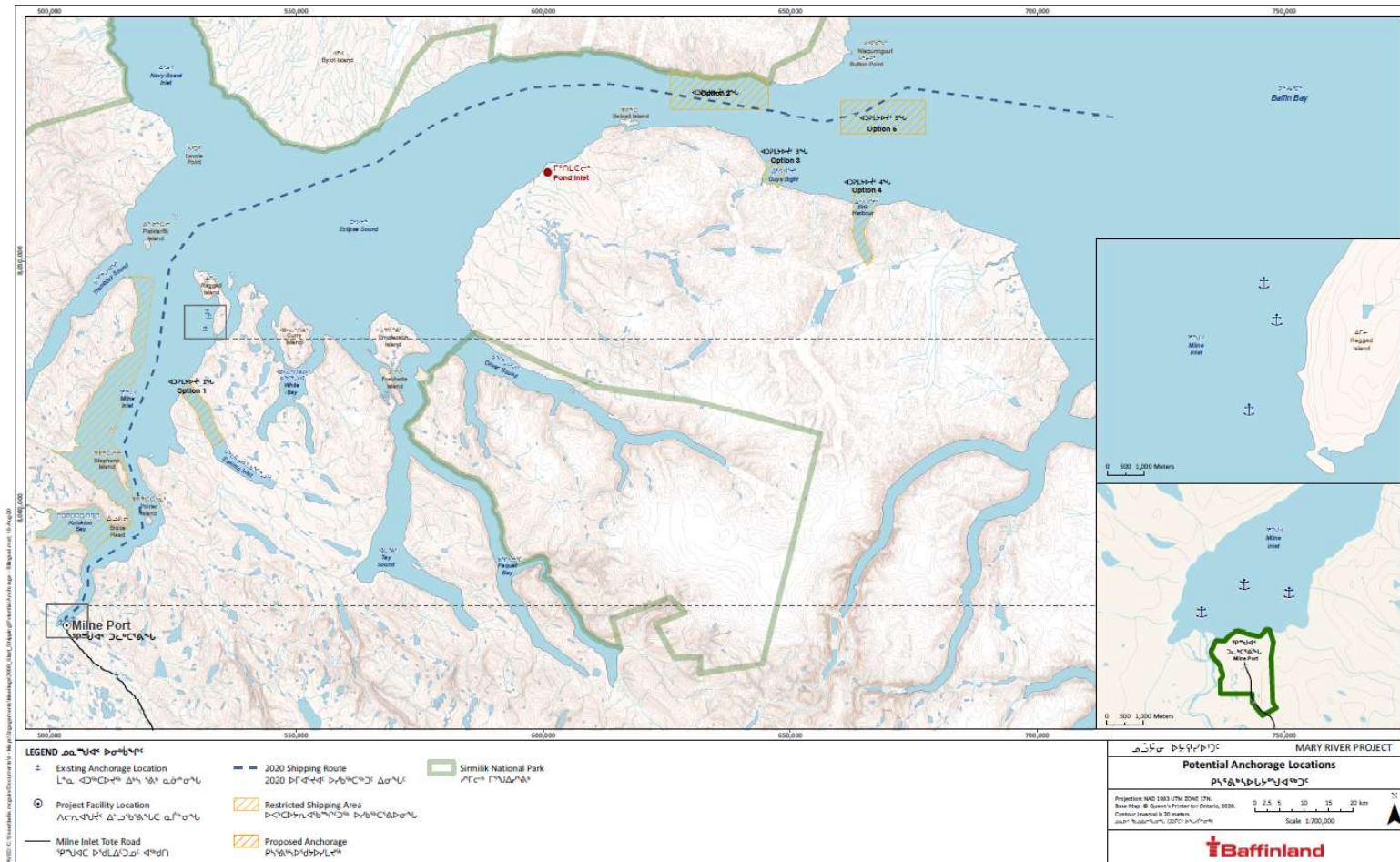
፳፱፻፳፱ ለጥሪ ልዩነቶች?

- [illegible]

▷Γ◁<sup>a</sup>ℳ◁<sup>c</sup> ◁<sup>b</sup>⊔<sup>a</sup>ℳ Δ⊔Δ<sup>c</sup>▷<sup>c</sup> ρρ<sup>b</sup>⊔<sup>c</sup>⊔<sup>a</sup>⊔<sup>c</sup>▷<sup>c</sup>⊔<sup>a</sup> ρσ<sup>b</sup>⊔<sup>c</sup>



# ርዕሰ ጉዞ ርዕሰ ልማት የካርታ ጥናት ልማት



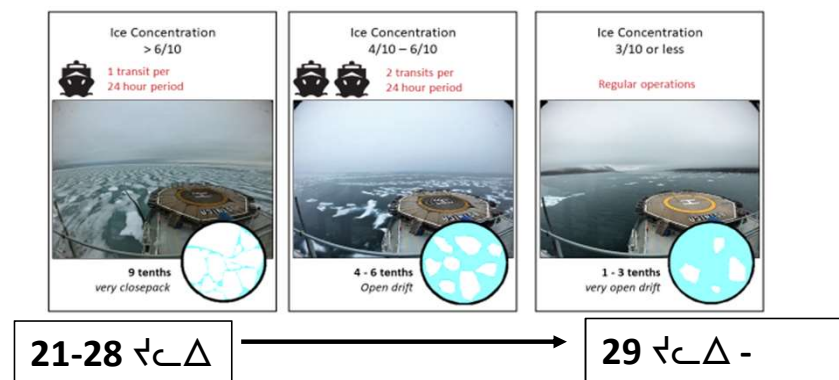
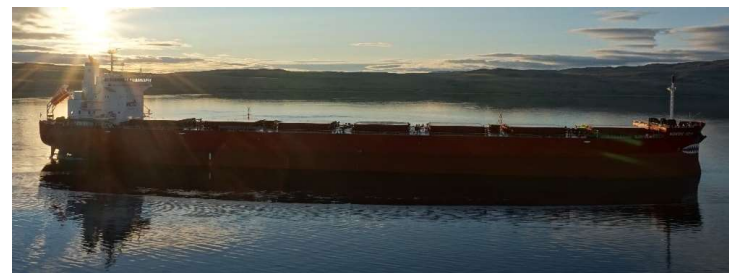


2020 ▶▷◁◁<sup>a</sup>◁σ<sup>b</sup>  
◁▷◁◁<sup>c</sup>◁◁<sup>b</sup>◁◁<sup>c</sup>



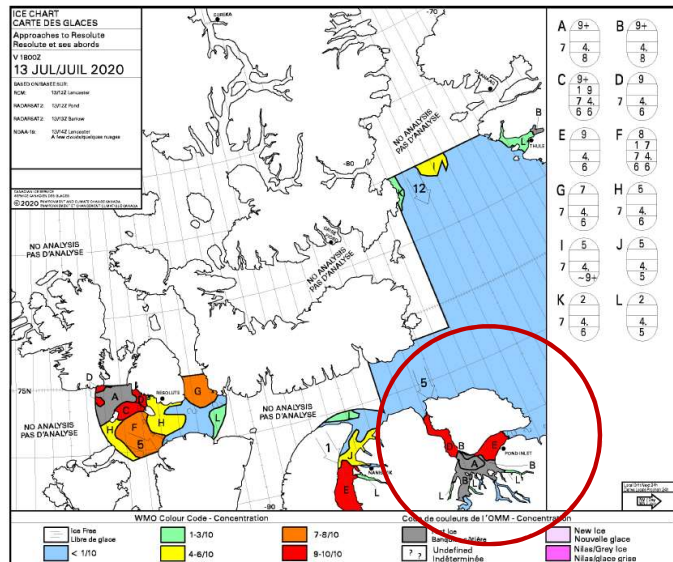
2020 ▷▷◁◁<sup>a</sup>▷◁σ<sup>b</sup> ◁▷◁◁<sup>c</sup>◁◁<sup>c</sup>

- [illegible]



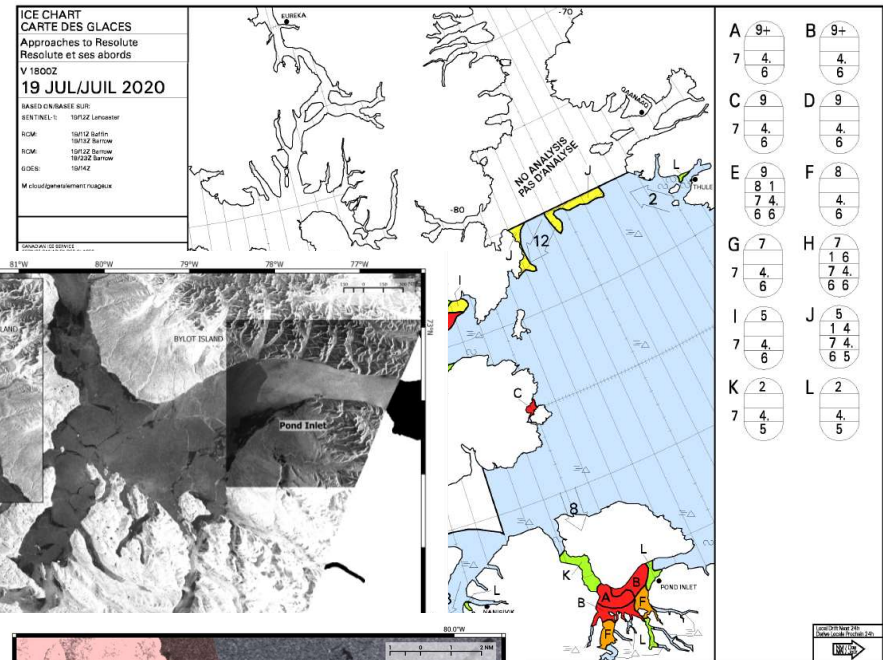
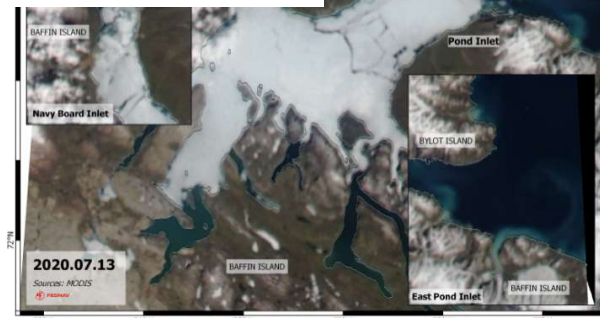
2020 ▷▷◁◁<sup>a</sup>◁σ<sup>b</sup> ◁▷◁<sup>c</sup>◁◁<sup>d</sup>

Ice chart – Approaches to Resolute – July 13, 2020 (Source: CIS)

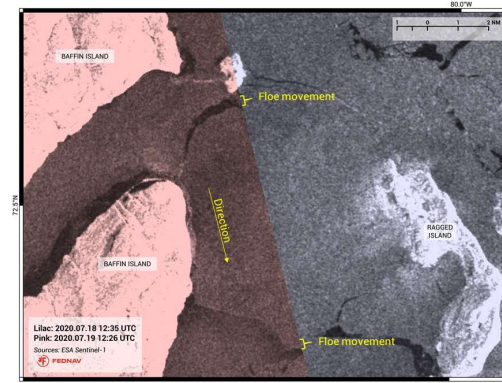


**13 བྱུང་འདུག 2020**

٥٦



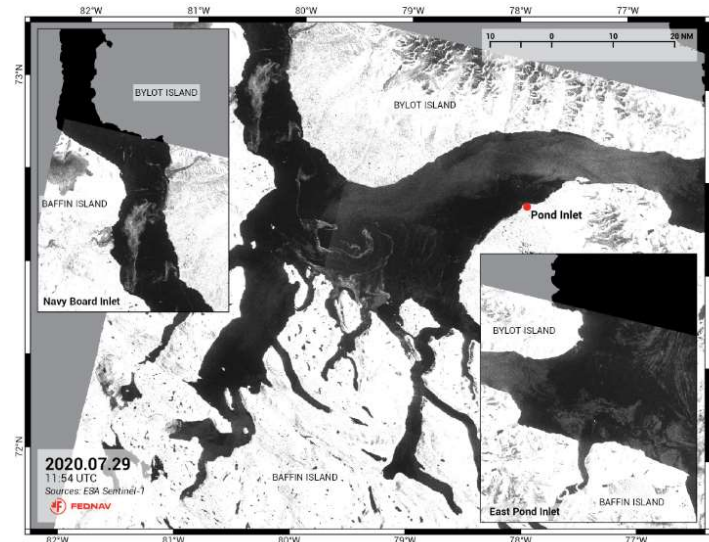
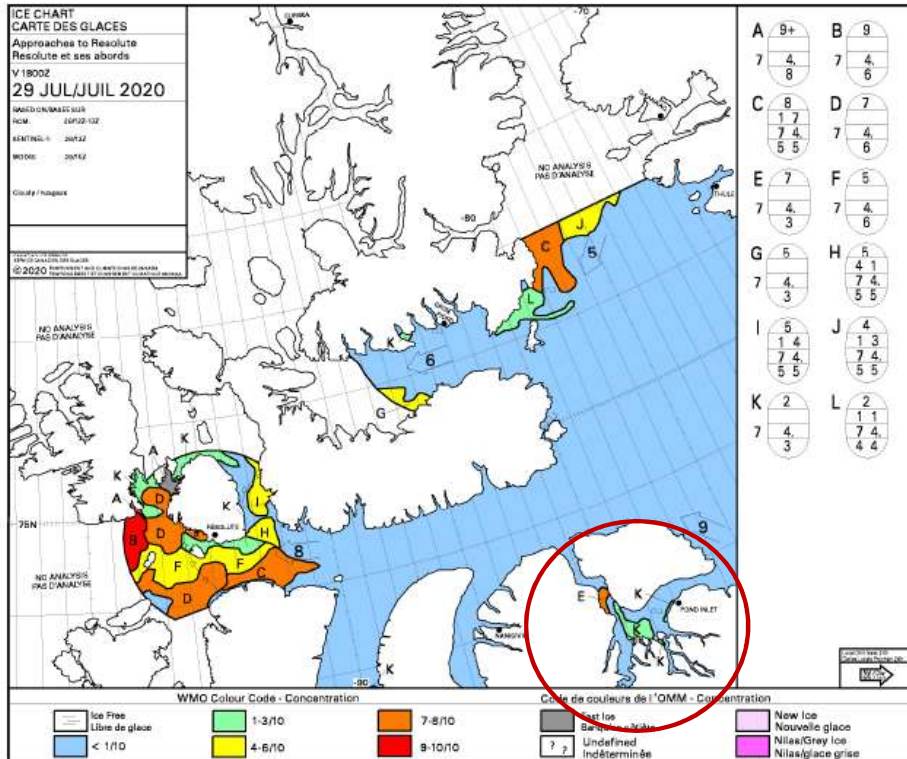
**19 ກຸມພາ 2020**  
**1-3/10 - 9/10**



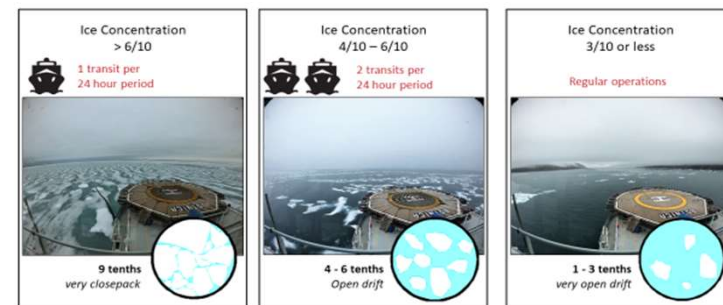


2020 ▷▷◁◁<sup>a</sup>◁σ<sup>b</sup> ◁▷◁<sup>c</sup>◁◁<sup>d</sup>

Ice chart – Approaches to Resolute – July 29, 2020 (Source: CIS)



29  $\nabla \Delta$  2020  
 $<1/10 - <4/10$



**21-28**  $\nabla \subset \Delta$

29  $\nabla \subset \Delta$  -



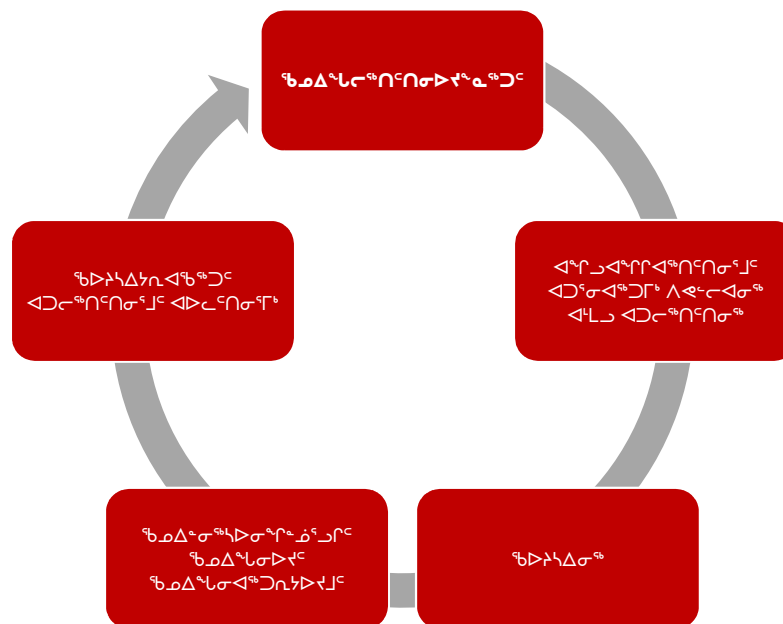
ՎՋՈՐԱՌԻԺ ԸՆԾԻՄ ԳԵՃԱԿԹԸ  
ՆԵՐՇԱՆԱԾ ԴՐՆԵՐՎՊՈՐՏԻՄԸ ԵՆԼՈՐՆ -  
ՄՅԷՄ ՆԵՐՇԻ  
ԸՆԾԻՄ ԳԵՃԱԿԹԸ

ԴՈՒՐՆ - ՎԵՐ 25, 2020



**Δ<sup>c</sup>N◁<sub>r</sub><sup>b</sup> C<sub>n</sub>▷<sup>a</sup> ▷◁N<sup>c</sup>L<sup>a</sup>**

- $\triangleright \Delta \Gamma^C$
- $\Delta L^{\text{aL}}$
- $\Delta^{\text{aB}} \text{aL}$
- $\text{bC}^C <^L \Delta \Gamma^C \triangleright^L L \Gamma^C$
- $\Delta^{\text{aB}} \supset \Delta^C$





# ልዩ ስልጠና ለጋራ ምክር ቤቶች ለጥራት ማረጋገጫ ስልጠና ለጥራት ማረጋገጫ ስልጠና

	ሰነድ										
	2006	2007	2008	2013	2014	2015	2016	2017	2018	2019	2020
የፍቃድ ሰነድ ፋይናንስ/ፋይናንስ ጋራ የፋይናንስ ሰነድ	✓	✓	✓	✓	✓	✓	✓	✓	✓	✓	✓
ልዩ ስልጠና የፋይናንስ ሰነድ				✓	✓	✓	✓	✓	*	✓	✓
ፋይናንስ ሰነድ የፋይናንስ ሰነድ				✓	✓	✓			✓	✓	**
ልዩ ስልጠና ለጋራ ምክር ቤቶች				✓	✓			✓	✓	✓	✓
ፋይናንስ ሰነድ የፋይናንስ ሰነድ	✓	✓	✓	✓	✓	✓	✓	✓	✓	✓	✓

የፋይናንስ ሰነድ ለጥራት ማረጋገጫ  
 ስልጠና

የፋይናንስ ሰነድ ለጥራት ማረጋገጫ  
 ስልጠና

- የፋይናንስ ሰነድ ለጥራት ማረጋገጫ ስልጠና ለጥራት ማረጋገጫ ስልጠና ለጥራት ማረጋገጫ ስልጠና
- ለፋይናንስ ሰነድ ለጥራት ማረጋገጫ ስልጠና ለጥራት ማረጋገጫ ስልጠና ለጥራት ማረጋገጫ ስልጠና

ΔΛΓΔCσ<sup>b</sup> σ<sup>c</sup>νΠσ<sup>b</sup> ς<sup>b</sup>Δ<sup>γ</sup>Δσ<sup>c</sup> ]<sup>c</sup> Ϸ<sup>c</sup>Λ<sup>c</sup> - 2019

[illegible][illegible][illegible][illegible]

ΛΓΔΕΖΗΘΙΚ:

- ᐃᑦᐅᑦᐅᑦ  
ᑭᐃᐃᐃᑦᑭᑦᑭᑦᑭᑦᐅᑦ  
ᐅᑦᐅᑦᐅᑦᐅᑦᐅᑦᐅᑦ  
ᐅᑦᐅᑦᐅᑦᐅᑦᐅᑦᐅᑦ
- ᑭᐅᐅᑦᐅᑦᐅᑦ  
ᐅᑦᐅᑦᐅᑦᐅᑦᐅᑦ  
ᐅᑦᐅᑦᐅᑦᐅᑦᐅᑦᐅᑦ  
ᑭᐃᐃᐃᑦᑭᑦᑭᑦᑭᑦᐅᑦ
- ᑭᐅᐅᑦᐅᑦᐅᑦᐅᑦᐅᑦᐅᑦᐅᑦ  
ᐅᑦᐅᑦᐅᑦᐅᑦᐅᑦᐅᑦᐅᑦᐅᑦ  
ᐅᑦᐅᑦᐅᑦᐅᑦᐅᑦᐅᑦᐅᑦ  
ᐅᑦᐅᑦᐅᑦᐅᑦᐅᑦᐅᑦᐅᑦ

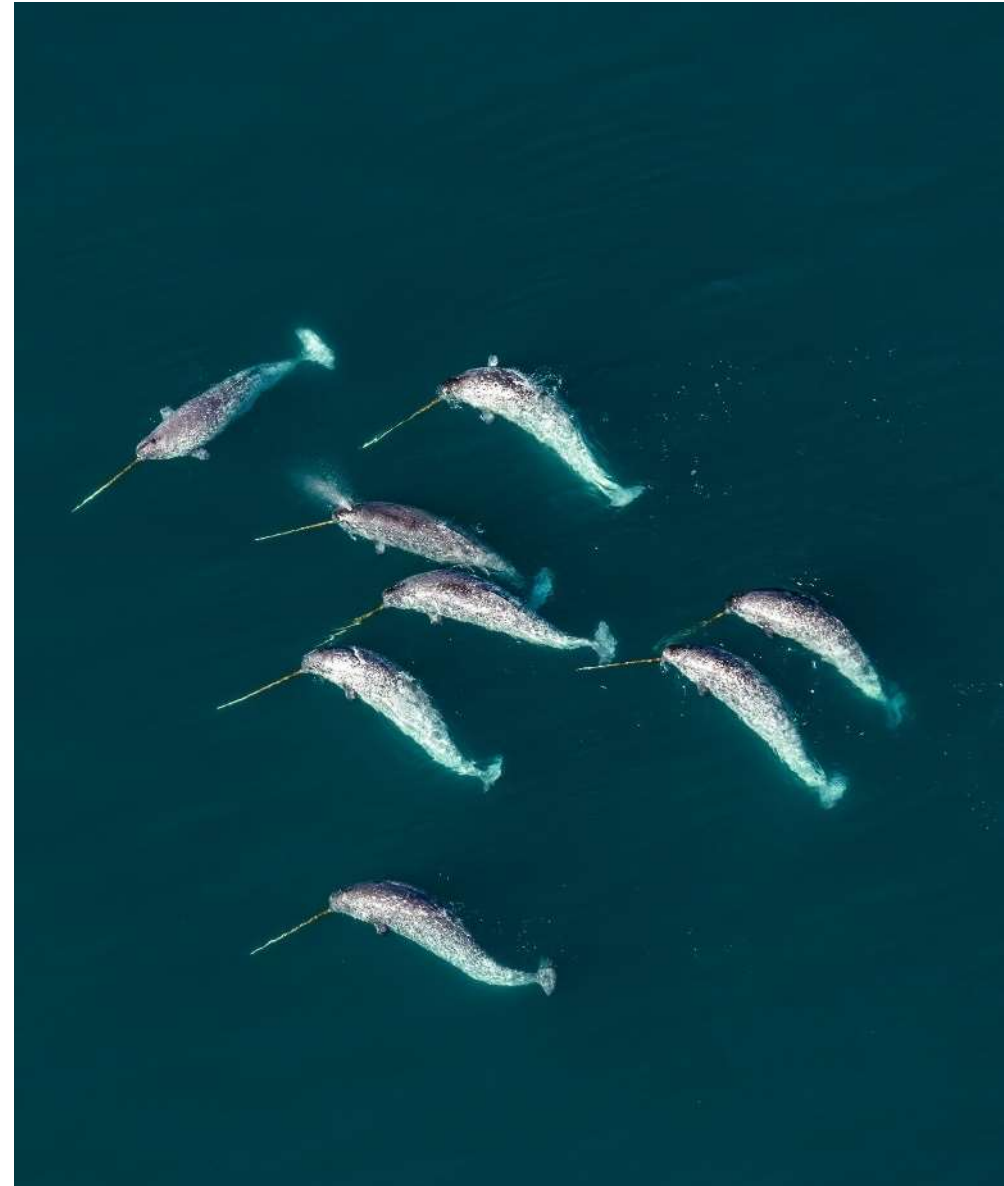
## ለጥራትና ልማት ምርመራና ምርመራ 2019-ጋ

2019 ርዕሰ ጉዳይ ምርመራና ምርመራ ጋራ	ልማት ምርመራ
MEEMP ርዕሰ ጉዳይ AIS ምርመራና ምርመራ ጋራ	1 ምርመራ ልማት, 1-2 ምርመራ ልማት (9 ልማት)
ልማት ምርመራና ምርመራ ምርመራና ምርመራ ጋራ	ሆስፒታል ምርመራና ምርመራ/ሆስፒታል; ሆስፒታል ምርመራና ምርመራ/ሆስፒታል (ልማት ልማት)
ልማት ምርመራና ምርመራ ምርመራና ምርመራ ጋራ	ሆስፒታል ምርመራና ምርመራ + ሆስፒታል ምርመራና ምርመራ (ልማት ልማት)
ጋራ ምርመራና ምርመራ ምርመራና ምርመራ ጋራ	ሆስፒታል ምርመራና ምርመራ (ልማት ልማት)
ምርመራና ምርመራ ምርመራና ምርመራ ጋራ	ሆስፒታል ምርመራና ምርመራ (ልማት ልማት)
ጠቅላይ ምርመራ	32 ምርመራ (87 ልማት)



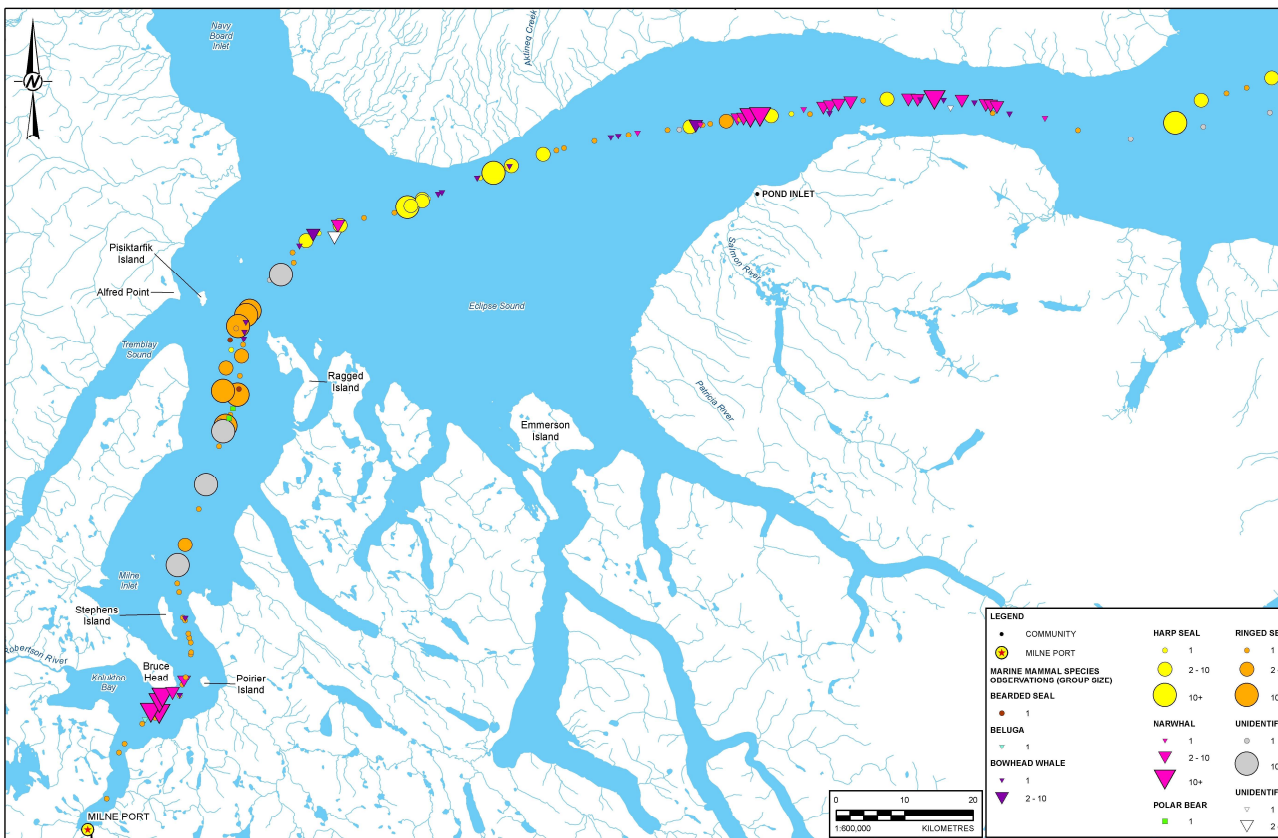
# ᑕᓕᓂᓄᓐ ᐃᑦᑕᓂᓄ ᑦᐃᑦᓂᓕᓂᓄᓐ – ᐃᑦᑭᑭᑦᑕᓂᓄ ᐃᑦᑕᓂᓄ

- ᐃᓄᓂᐃᑦᑕᓂᓄᓐᓂᓄᓐ ᓂᓕᓂᓄ ᑦᑭᑕᓂᓄᓂᓄᓐ  
ᑕᐃᑦᑕᓂᓄᓂᓄᓐ ᓂᓕᓂᓄ ᑕᐃᑦᑕᓂᓄᓂᓄᓐ 2014-ᑦᑕ 2019-ᑦᑕ
- ᑦᑭᑕᓂᓄᓂᓄᓐ ᐃᓄᑦᓂᓄᓐᓂᓄᓐ ᑕᓂᓄᓂᓄᓐ ᐃᓂᓄᓂᓄᓂᓄᓐᓂᓄᓐ  
ᐃᑦᑕᓂᓄᓂᓄᓐᓂᓄᓐ ᐃᓂᓄᓂᓄᓂᓄᓐᓂᓄᓐᓂᓄᓐ
- ᓂᓕᓂᓄ ᑦᑭᑕᓂᓄᓂᓄᓐ ᐃᓄᓂᓄ ᑦᑭᑕᓂᓄᓂᓄᓐ-ᐃᓂᓄᓂᓄᓐ ᑭᑭᓂᓄᓂᓄᓐ  
ᑦᑭᑕᓂᓄᓂᓄᓐ ᓂᓂᓂᓄ
- ᐃᑕᓂᓄᓂᓄᓂᓄᓐ ᓂᓂᓂᓄᓂᓄᓐᓂᓄᓐ, ᑕᓂᓄᓂᓄᓂᓄᓐ ᐃᓂᓄᓂᓄᓂᓄᓐ,  
ᑦᑭᑕᓂᓄᓂᓄᓐ ᐃᑦᑕᓂᓄᓂᓄᓐ ᐃᑦᑕᓂᓄᓂᓄᓐ
- ᓂᓕᓂᓄ ᑦᑭᑕᓂᓄᓂᓄᓐ ᑦᑭᑕᓂᓄᓂᓄᓐᓂᓄᓐᓂᓄᓐ ᐃᑦᑕᓂᓄᓂᓄᓐ  
ᐃᑦᑕᓂᓄᓂᓄᓐᓂᓄᓐ ᐃᑦᑕᓂᓄᓂᓄᓐ ᐃᓂᓄᓂᓄᓂᓄᓐ
- ᐃᑕᑕᓂᓄᓂᓄᓂᓄᓐ ᓂᓂᓂᓄᓂᓄᓐ ᓂᓂᓂᓄᓂᓄᓐᓂᓄᓐᓂᓄᓐ  
ᐃᑦᑕᓂᓄᓂᓄᓐᓂᓄᓐ - ᐃᑕᓂᓄᓂᓄᓂᓄᓐ ᐃᑦᑕᓂᓄᓂᓄᓐ ᐃᓂᓄᓂᓄᓂᓄᓐ  
ᑦᑭᑕᓂᓄᓂᓄᓐᓂᓄᓐ

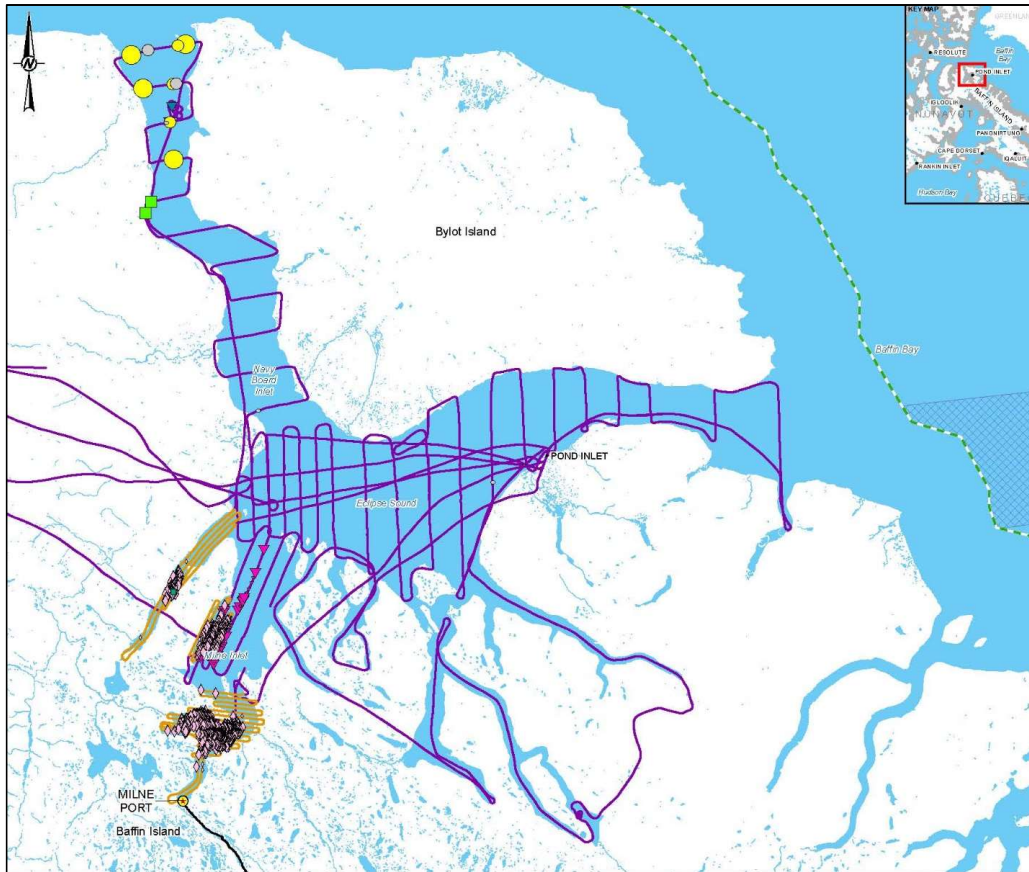


2019 ▶ ▢ ◀ ◃ ◅ ◆ ◇ ◈ ◉ ◊ ○ ◌ ◍ ◎ ● ◐ ◑ ◒ ◓ ◔ ◕ ◖ ◗ ◘ ◙ ◚ ◛ ◜ ◝ ◞ ◟ ◠ ◡ ◢ ◣ ◤ ◥ ◦ ◧ ◨ ◩ ◪ ◫ ◬ ◭ ◮ ◯ ◰ ◱ ◲ ◳ ◴ ◵ ◶ ◷ ◸ ◹ ◺ ◻ ◼ ◽ ◾ ◿ ◁ ▷ ▹ ▸ ▹ ▸ ◂ ◃ ◄ ◅ ◆ ◇ ◈ ◉ ◊ ○ ◌ ◍ ◎ ● ◐ ◑ ◒ ◓ ◔ ◕ ◖ ◗ ◘ ◙ ◚ ◛ ◜ ◝ ◞ ◟ ◠ ◡ ◢ ◣ ◤ ◥ ◦ ◧ ◨ ◩ ◪ ◫ ◬ ◭ ◮ ◯ ◰ ◱ ◲ ◳ ◴ ◵ ◶ ◷ ◸ ◹ ◺ ◻ ◼ ◽ ◾ ◿ ◁

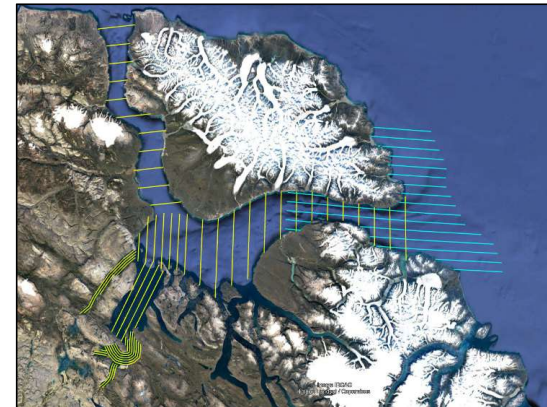
ᠠᠨᠠᠨᠠᠨ 19-29, 2019

[illegible]

# ልዩ ጥበቃ ማረጋገጫ ማስፈጸሚያ ማዕከል ማረጋገጫ - ልዩ 25-26



 **Baffinland**



ርገዳ

Admiralty Inlet



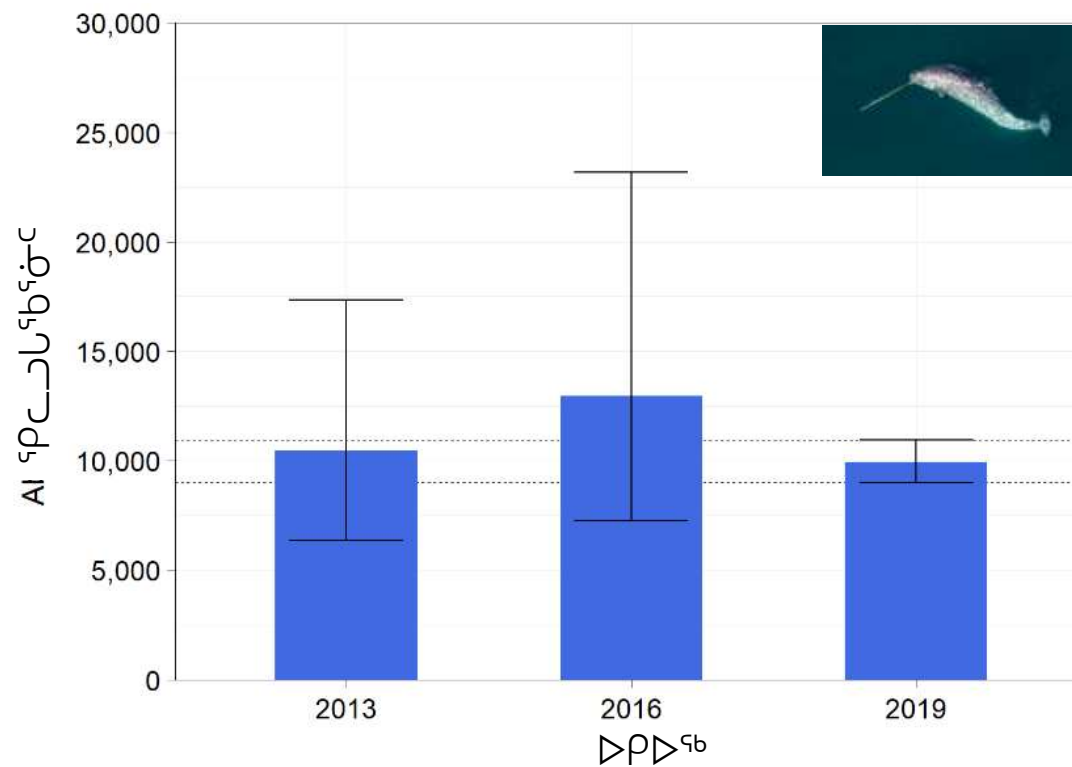
ፋርስ ማረጋገጫ:

ለጥንቃቄ ማረጋገጫ  
 ለጥንቃቄ ማረጋገጫ  
 (ፋርስ ማረጋገጫ ለጥንቃቄ)  
 ፋርስ ማረጋገጫ/ፋርስ ማረጋገጫ  
 ማረጋገጫ/ማረጋገጫ  
 ማረጋገጫ

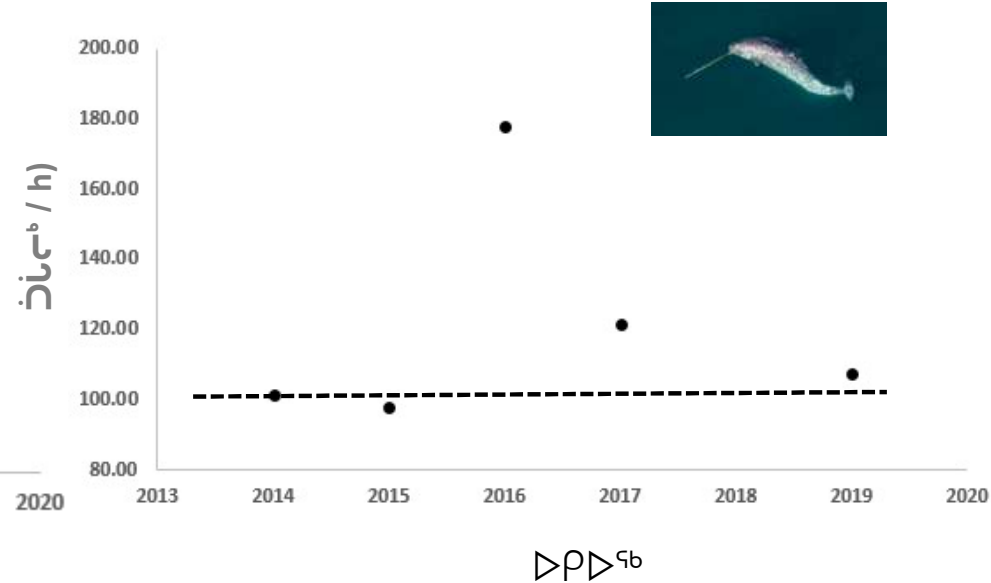
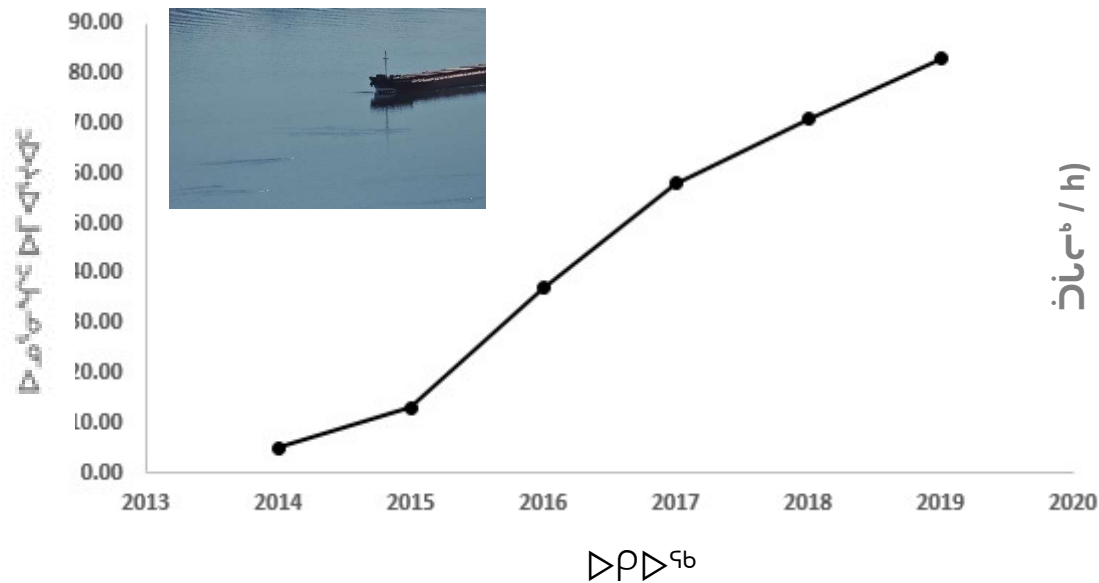




# ልዩ ፍጥጥር ምሳሌ ምሳሌ ምሳሌ ምሳሌ ምሳሌ ምሳሌ ምሳሌ ምሳሌ - ልዩ ፍጥጥር ምሳሌ ምሳሌ ምሳሌ ምሳሌ ምሳሌ ምሳሌ ምሳሌ ምሳሌ



ፌዴራል ምክር ቤት ጽሕፈት ቤት ጽሑፍ - ልማት ጥራት ምርት  
ፌዴራል ምክር ቤት ጽሕፈት ቤት ጽሑፍ  
2014-2017, 2019



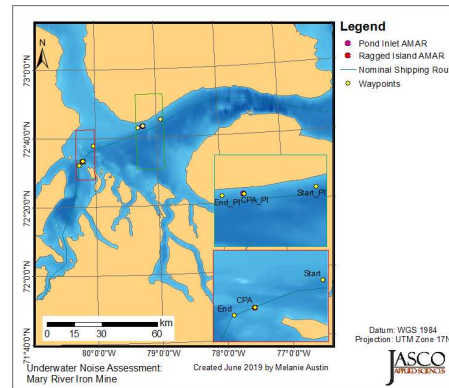
- $b \cap L^c \triangleleft^{\text{qb}} P \triangleright L \sigma^a$

A person wearing a blue and yellow checkered jacket and a hood is standing inside a wooden structure. The structure has a sign that reads "Bible Head" and a small logo. The person is smiling. The structure is made of wood and has a roof. The background shows a rocky, hilly landscape under a blue sky.



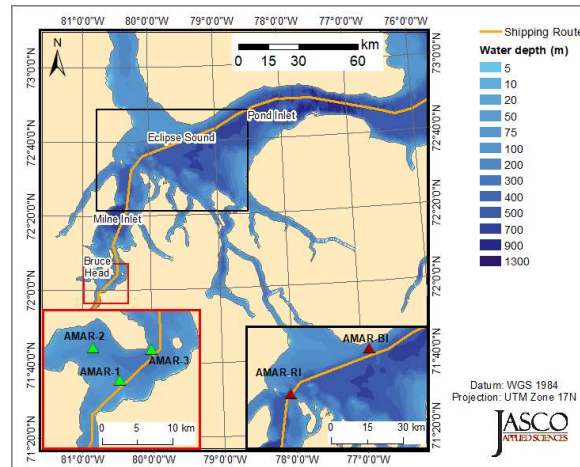
# 2019 ሙሉ ስራ ስርዓት

- ስራ ስርዓት - ስራ ስርዓት  
ፈጠራ ስራ ስርዓት
- 18 – 23 ጥቅምት, 2019
  - ሙሉ ስራ ስርዓት > 120 ሰዓት
  - ሙሉ ስራ ስርዓት < 120 ሰዓት
- ስራ ስርዓት ስራ ስርዓት  
ሰዓት ስራ ስርዓት ስራ ስርዓት  
ሰዓት ስራ ስርዓት 2020 ሰዓት



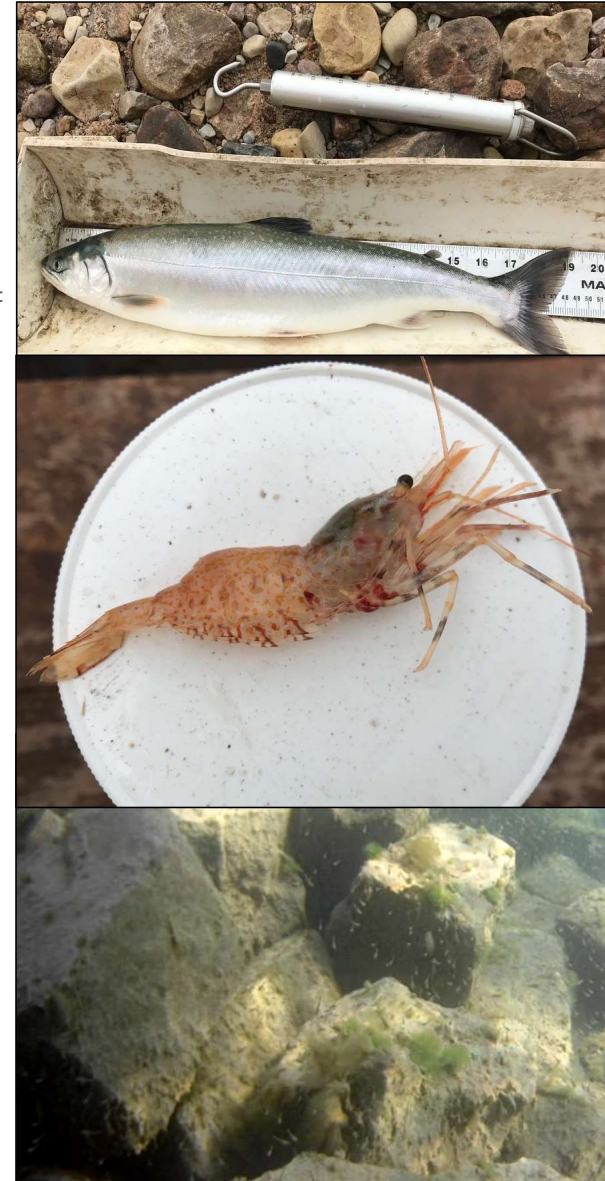
## ስራ ስርዓት - ስራ ስርዓት

- 5 ጥቅምት - 28 ጥቅምት 2019
  - ሙሉ ስራ ስርዓት > 120 ሰዓት
  - ሙሉ ስራ ስርዓት < 120 ሰዓት
- ስራ ስርዓት ስራ ስርዓት  
ሰዓት ስራ ስርዓት ስራ ስርዓት  
ሰዓት ስራ ስርዓት 2020 ሰዓት



# ᑕᓂᐅᓂ ᐊᑦᑕᓗ ᑦᐸᑦᑕᓂᓴᐅᑦᑕᓴᑦ – ᐊᓐᑭᐅᑦᑕᓴᑦ ᐅᓐᑕᑦᑕᓴᑦ

- ᐃᓴᓴᑕ ᑦᑕᓂᓴᑕᓴᑦ: ᑦᑕᐅᓴᑕᓴᑦᑕᓴᑦ ᐱᑕᓴᑕᓴᑦ ᐊᑦᑕᓴᑕᓴᑦ
  - ᐃᑦᐅᓐ ᐱᐅᑦᑕᓴᑦ ᑕᐃᓴᐃᓴᑦᑕᓴᑦ 2014ᑦ 2019ᑦ ᑕᐃᓴᐃᓴᑦᑕᓴᑦ ᐅᑦᐅᑦᐅᑦᐅᑦ ᐅᓴᑦᑕᑕᐅᓴᑦᑕᓴᑦ
  - ᐃᑦᑕᑕᓴᑕᓴᑦ ᑕᓂᐅᓂᓴᑦᑕᓴᑦ
- ᑕᓂᐅᓐ ᐃᓂᑕᓴᑕᓴᑦ ᐊᓴᓴᑦᑕᓴᑦ: ᑦᑕᐅᓴᑕᓴᑦᑕᓴᑦ ᐱᑕᓴᑕᓴᑦ ᐊᓴᓴᑕᓴᑦ
  - ᐃᓂᓴᑕᓴᑦ ᑕᓂᓴᑕᓴᑦ ᑕᐃᓴᐃᓴᑦᑕᐃᓴᐃᓴᑦᑕᓴᑦ ᐊᑦᑕᓴᑕᓴᑦ 2014ᑦ 2019ᑦ
  - ᐃᓂᓴᑕᓴᑦ ᑦᑕᓴᑕᓴᑦ ᑕᐃᓴᐃᓴᑦᑕᐃᓴᐃᓴᑦᑕᓴᑦ ᐊᑦᑕᓴᑕᓴᑦ 2014ᑦ 2019ᑦ
  - ᐊᓴᓴᑕᓴᑦ ᐊᓴᓴᑦᑕᓴᑦᑕᓴᑦ ᐃᑕᓴᑕᓴᑦ ᑕᓂᐅᓂ ᐱᓴᑦᑕᓴᑦ ᐊᓴᓴᑦ ᐅᓴᑦ
- ᐃᓂᓴᑕᓴᑦ ᑦᑕᓴᐃᓴᑦᑕᓴᑦ ᐊᓴᓴᑦ ᐅᓴᑦᑕᓴᑦ
  - ᐃᓂᓴᑕᓴᑦ ᐊᓴᑦ ᐱᑕᓴᑕᓴᑦᑕᓴᑦ ᐊᓴᓴᑦ
  - ᐊᓴᓴᑦ ᐅᓴᑦ: ᑕᓴᑦ, ᐅᓴᑦ, ᓴᐅᓴᑦᑕᓴᑦ
  - ᐃᓂᓴᑕᓴᑦ ᑕᓴᓴᓴᑦ ᐊᓴᓴᑦ ᑦᑕᐅᓴᑕᓴᑦᑕᓴᑦ ᐱᓴᓴᓴᑦᑕᓴᑦ ᐊᓴᓴᑦ ᐅᓴᑦᐊᓴᑦᑕᓴᑦ
  - ᑦᑕᐅᓴᑕᓴᑦᑕᓴᑦ ᐊᓴᓴᑦᑕᓴᑦ ᐊᓴᓴᑦᑕᓴᑦ ᐊᓴᓴᑦᑕᓴᑦ ᐊᓴᓴᑦᑕᓴᑦ ᐊᓴᓴᑦᑕᓴᑦ
- ᐃᓴᑕᓴᑦ ᐊᓴᑦᑕᓴᑦ ᐊᓴᑦᑕᓴᑦ ᐊᓴᑦᑕᓴᑦ ᐊᓴᑦᑕᓴᑦ
- ᐃᓴᑦ ᐊᓴᑦᑕᓴᑦ ᐊᓴᑦ
  - ᐊᓴᑦᑕᓴᑦ ᑕᓴᓴᑦᑕᓴᑦᑕᓴᑦ ᐊᓴᑦᑕᓴᑦ ᐊᓴᑦᑕᓴᑦ ᐊᓴᑦᑕᓴᑦ ᐊᓴᑦᑕᓴᑦ ᐊᓴᑦᑕᓴᑦ



# ርቢጥ ልጅ ገላጽ ስጦት — ገጽጽ ገጽ

- ልሳሽ ስጦት: ስጦት ስጦት ስጦት ስጦት ስጦት

- ልጅ ስጦት
- ልጅ ስጦት

- ልጅ ስጦት

- ልጅ ስጦት
- ልጅ ስጦት
- ልጅ ስጦት

- ልጅ ስጦት

- ልጅ ስጦት
- ልጅ ስጦት
- ልጅ ስጦት
- ልጅ ስጦት

- ልጅ ስጦት

- ልጅ ስጦት

- ልጅ ስጦት
- ልጅ ስጦት



*Marenzelleria viridis*







2020 ልዩፕሮጋም ምዝገባ  
ፍጥነትና ጥራት

ΔΛΓΔCσ<sup>b</sup> σ<sup>c</sup>νΠσ<sup>b</sup> ςβ▷ΓΔσ<sup>c</sup>J<sup>c</sup> Ϸζ<sup>a</sup>Λ<sup>c</sup> - 2020



རྩུམ་ལྷན་ཁྲིམས་ལྟར་  
 རྒྱུ་ལྷན་ཁྲིམས་ལྟར་  
 འཇུག་ལྷན་ཁྲིམས་ལྟར་  
 རྒྱུ་ལྷན་ཁྲིམས་ལྟར་  
 (འཇུག་ལྷན་ཁྲིམས་ལྟར་  
 འཇུག་ལྷན་ཁྲིམས་ལྟར་  
 འཇུག་ལྷན་ཁྲིམས་ལྟར་

[illegible][illegible]

ԾԱՌԱՅՈՒԹՅԱՆ ԴԱՐԱՆ  
 ԳԵՂԱՆԻՍՏՅԱՆ

2020  
COVID-19

ΛΓΔΕΖΗΘΙΚ:

ᐃᐅᑦᑦᑦᑦ  
 ᑦᑦᑦᑦᑦᑦᑦᑦᑦᑦᑦᑦ  
 ᐃᑦᑦᑦᑦᑦᑦ ᐱᑦᑦ  
 ᐃᑦᑦᑦᑦᑦᑦ ᐃᑦᑦᑦᑦᑦᑦ

ፍፁም ጥያቄዎችን ለማሟላት  
ፍፁም ጥያቄዎችን ለማሟላት  
ፍፁም ጥያቄዎችን ለማሟላት

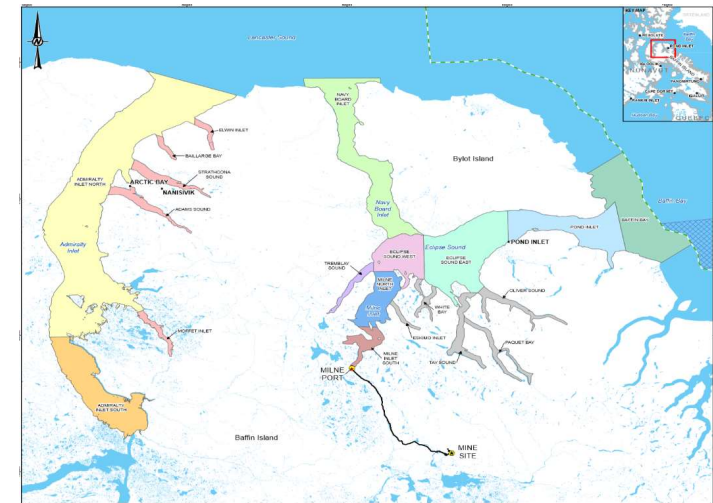
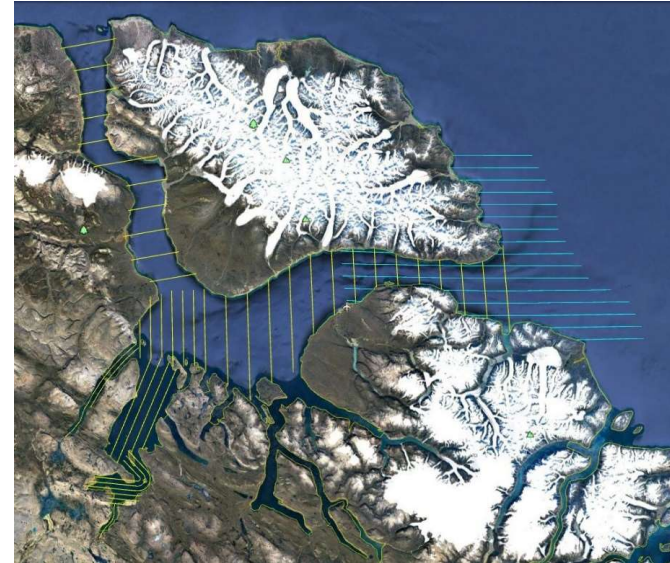
ፍፅላት ጋር ለጋር ፍብርብ ፍብ  
 ለፍብ ጋር ፍብ ፍብ ፍብ ፍብ ፍብ  
 ለፍብ ጋር ፍብ ፍብ ፍብ ፍብ ፍብ





# 2020 ᑕᓚᐅᑦᑦᑦᑦᑦᑦ ᐅᓚᓴᑦᑦ ᑦᑦᑦᑦᑦᑦᑦᑦ ᑦᑦᑦᑦᑦᑦᑦᑦ

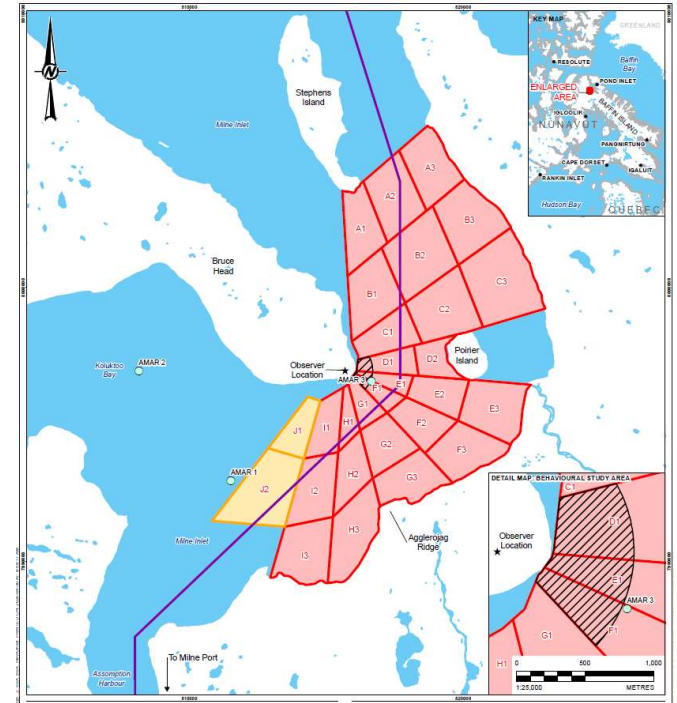
- ᐱᑦᑦᑦᑦ ᑦᑦᑦᑦᑦᑦᑦᑦ
  - ᓴᑦᑦᑦᑦᑦ: ᑦᑦᑦᑦᑦᑦ ᑦᑦᑦᑦᑦᑦᑦ ᐱᑦᑦᑦᑦᑦᑦᑦ;
  - ᑦᑦᑦᑦᑦᑦ: ᑦᑦᑦᑦᑦᑦ ᑦᑦᑦᑦᑦᑦᑦ ᐱᑦᑦᑦᑦᑦᑦᑦ;
  - ᐱᑦᑦᑦᑦᑦᑦ: ᑦᑦᑦᑦᑦᑦ ᑦᑦᑦᑦᑦᑦᑦ; ᑦᑦᑦᑦᑦᑦᑦᑦ (ᐱᑦᑦᑦᑦᑦᑦᑦᑦ ᑦᑦᑦᑦᑦᑦᑦᑦ)
- ᑦᑦᑦᑦᑦᑦ ᑦᑦᑦᑦᑦᑦᑦᑦᑦᑦ
  - ᑦᑦᑦᑦᑦᑦᑦ
  - ᑦᑦᑦᑦᑦᑦᑦᑦ ᑕᓚᐅᑦᑦᑦᑦᑦᑦᑦᑦᑦᑦ





# 2020 ልጋልሮቲ ሥነፍጥናዊ ምርምር

- ልማት/በጠቅላላ ምርምር ዓላማዎች:
  - ልማት/በጠቅላላ ምርምር ዓላማዎች
  - በጠቅላላ ምርምር ዓላማዎች ልማት/በጠቅላላ ምርምር ዓላማዎች
  - ልማት/በጠቅላላ ምርምር ዓላማዎች
    - ልማት/በጠቅላላ ምርምር ዓላማዎች
    - ልማት/በጠቅላላ ምርምር ዓላማዎች
  - ልማት/በጠቅላላ ምርምር ዓላማዎች
- ለጠቅላላ ምርምር ዓላማዎች ልማት/በጠቅላላ ምርምር ዓላማዎች ልማት/በጠቅላላ ምርምር ዓላማዎች



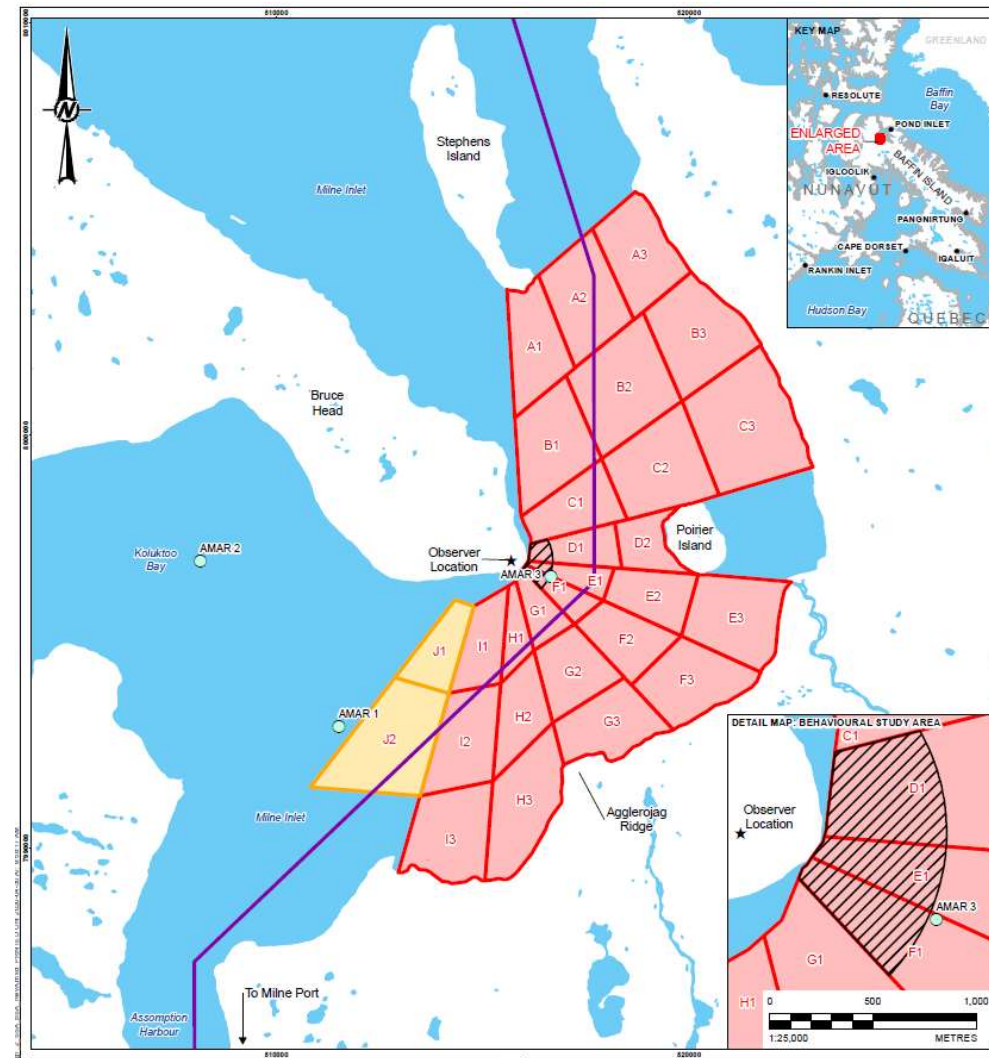
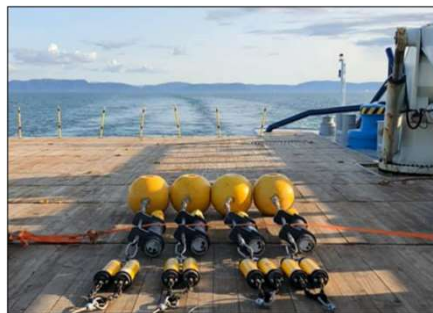
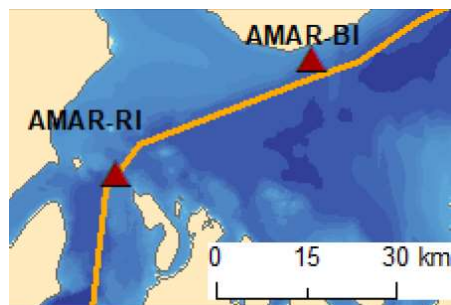
## ᐃᓗᐱᓕᑦ ᓄᓇᒥᓐᓴᓂᑦ ᓴᑲᐅᓯᓴᐃᓂᓐᓴᑲ

- 2020 ᐃᓐᓄᑲᐅᓯᒪ ᓴᓴᓯᐅᓐᓴᑲ ᓴᑲᓴᑲᐅᓯᓐᓴᑲ / ᓴᑲᓴᑲᐅᓯᓐᓴᑲ
- ᓴᑲᓄᓂᓯ: ᓂᓴᒪᓐ ᐱᓇᓯᐅᓯᓐᓴᑲ
- ᐅᐅᓐᓴᐅᓯᒪᓴᑲ InDro Robotics-ᓐᓴᓄᓐ:
- ᐅᓄᓐᓴᐅᓐ ᓴᑲᓴᑲᐅᓯᓐᓴᑲ ᐅᓯᓐᓴᐅᓯᓐᓴᑲ
- ᑲᓇᐅᒥᓐ ᐃᓴᓯᓴᓴᓐᓴᓐᓴᑲ ᐅᓯᓐᓴᐅᓯᓐᓴᑲ ᓴᑲᓴᑲᐅᓯᓐᓴᑲᓴᑲ ᓇᓗᓇᐃᓐᓴᑲ (SFOC)



2020 ሚያዝያ ፳፻፲፱ ዓ.ም

- ᐃᓂᑦᓴᓂᐅᓂᐸᑦᑐᑦ ᐱᑦᔪᑦ ᓂᐱᑦᐅᓂᐸᑦ ᐃᑦᓴᓂᐸᑦ  
ᐅᓂᐸᑦᕐᓴᓂᐸᑦ ᑦᓂᐸᑦᐅᓂᐸᑦ ᐃᑦᓴᓂᐸᑦ  
ᐃᑦᓴᓂᐸᑦ
- ᐃᓂᐸᑦ ᓂᐱᑦᐅᓂᐸᑦ ᐃᑦᓴᓂᐸᑦ ᐃᑦᓴᓂᐸᑦ  
ᐃᑦᓴᓂᐸᑦ ᐃᑦᓴᓂᐸᑦ







# MEEMP – ᑕᓕᓄᓐᓂᓐ ᓄᓐᓂᓐ

- ᓂᓄᓐᓂᓐᓂᓐ ᓄᓐᓂᓐ ᓄᓐᓂᓐ ᓄᓐᓂᓐ ᓄᓐᓂᓐ
  - ᓄᓐᓂᓐᓂᓐ, ᓄᓐᓂᓐᓂᓐ, ᓄᓐᓂᓐᓂᓐ ᓄᓐᓂᓐᓂᓐ,
  - ᓄᓐᓂᓐᓂᓐ (ᓄᓐᓂᓐᓂᓐ ᓄᓐᓂᓐᓂᓐ),
- ᓄᓐᓂᓐᓂᓐ ᓄᓐᓂᓐᓂᓐ ᓄᓐᓂᓐᓂᓐ
  - ᓄᓐᓂᓐᓂᓐ ᓄᓐᓂᓐᓂᓐ ᓄᓐᓂᓐᓂᓐ -
  - ᓄᓐᓂᓐᓂᓐ ᓄᓐᓂᓐᓂᓐ ᓄᓐᓂᓐᓂᓐ ᓄᓐᓂᓐᓂᓐ
  - ᓄᓐᓂᓐᓂᓐ ᓄᓐᓂᓐᓂᓐ ᓄᓐᓂᓐᓂᓐ ᓄᓐᓂᓐᓂᓐ



$$\Delta L^{\epsilon} \Gamma \triangleright C \Delta^c \quad C \dot{L} \sigma^{\epsilon} \Gamma \triangleright C \triangleright^{\epsilon} \Gamma^c \supset^c$$

- [illegible]





[illegible]

- [illegible]



[illegible]

- [illegible]







ᐃᓇᐅᓕᓕᓕᓕᓕ ᐅᓕᓕᓕᓕ ᓕᓕᓕᓕᓕᓕ  
ᐱᓕᓕᓕᓕᓕᓕ ᐅᓕᓕᓕᓕᓕᓕᓕᓕᓕᓕ ᐅᓕᓕᓕᓕᓕ -  
ᓕᓕᓕᓕᓕ ᐱᓕᓕᓕᓕᓕ  
ᐅᓕᓕᓕᓕ ᓕᓕᓕᓕᓕᓕᓕ

ᐅᓕᓕᓕᓕᓕ - ᐃᓕᓕᓕ 25, 2020



2020  $\triangleright \Gamma \triangleleft^a \triangleleft^b d^c$   
 $\triangleright \rho^a b^b C^a \sigma^a \rho^c \quad a \Delta \dot{a}^b \rho^c L^c$

- [illegible]





