

Meadowbank Gold Mine Project & the Whale Tail Pit Project

ᐱᕈᓴᑦ ᐃᓄᓴᑦ ᐅᓂᓴᑦ ᐅᓂᓴᑦ ᐅᓂᓴᑦ ᐅᓂᓴᑦ
ᐅᓂᓴᑦ ᐅᓂᓴᑦ ᐅᓂᓴᑦ ᐅᓂᓴᑦ ᐅᓂᓴᑦ

Annual Monitoring Update / ᐱᕈᓴᑦ ᐃᓄᓴᑦ ᐅᓂᓴᑦ ᐅᓂᓴᑦ
NIRB File No. 03MN107 & 16MN056 / ᐱᕈᓴᑦ ᐃᓄᓴᑦ ᐅᓂᓴᑦ ᐅᓂᓴᑦ
Baker Lake / ᐅᓂᓴᑦ ᐅᓂᓴᑦ

An aerial photograph of a massive open-pit mine. The mine features several distinct terraced levels or benches, showing the progression of excavation. A network of dirt roads winds through the various levels of the pit. Several pieces of heavy machinery, including trucks and excavators, are visible on the lower levels, indicating active mining operations. The surrounding landscape appears flat and arid under a clear sky.

Meadowbank Gold Mine Project & the Whale Tail Pit Project

ᐱᐃᐅᐁᓴᑦ ᐃᐅᐁᓴᑦ ᐃᐅᐁᓴᑦ ᐃᐅᐁᓴᑦ ᐃᐅᐁᓴᑦ
ᐃᐅᐁᓴᑦ ᐃᐅᐁᓴᑦ ᐃᐅᐁᓴᑦ ᐃᐅᐁᓴᑦ ᐃᐅᐁᓴᑦ

Annual Monitoring Update / ᐱᐃᐅᐁᓴᑦ ᐃᐅᐁᓴᑦ ᐃᐅᐁᓴᑦ ᐃᐅᐁᓴᑦ
NIRB File No. 03MN107 & 16MN056 / ᐱᐃᐅᐁᓴᑦ ᐃᐅᐁᓴᑦ 03MN107 & 16MN056
Baker Lake / ᐃᐅᐁᓴᑦ

Meadowbank Gold Mine Project & the Whale Tail Pit Project

**ᐱᕈᓇ ᑭᏗᑦ ᑲᔨᒃ ᐸᕋᑦ ᐅᕙᑦ ᐳᕐᓂᕐᓴᑦ
ᐳᕐᓂᕐᓴᑦ ᐳᕐᓂᕐᓴᑦ**

Annual Monitoring Update / ᐱᕈᓇ ᑭᏗᑦ ᑲᔨᒃ ᐸᕋᑦ ᐅᕙᑦ ᐳᕐᓂᕐᓴᑦ
NIRB File No. 03MN107 & 16MN056 / ᐱᕈᓇ ᑭᏗᑦ ᑲᔨᒃ ᐸᕋᑦ ᐅᕙᑦ ᐳᕐᓂᕐᓴᑦ 03MN107 & 16MN056
Baker Lake / ᐳᕐᓂᕐᓴᑦ

[illegible]

[illegible]

- [illegible]

$\Delta^a \sigma \Delta^b C \Delta c \cap^c \gamma^c \wedge^c d \gamma^c \sigma^a \sigma^b \sigma^c$, $\Delta^a \sigma \Delta^b C \Delta c \cap^c \gamma^c \wedge^c d \gamma^c \sigma^a \sigma^b \sigma^c$
 $\triangleright d \sigma^a \sigma^b \sigma^c \Delta^a \sigma \Delta^b C \Delta c \cap^c \gamma^c \wedge^c d \gamma^c \sigma^a \sigma^b \sigma^c$

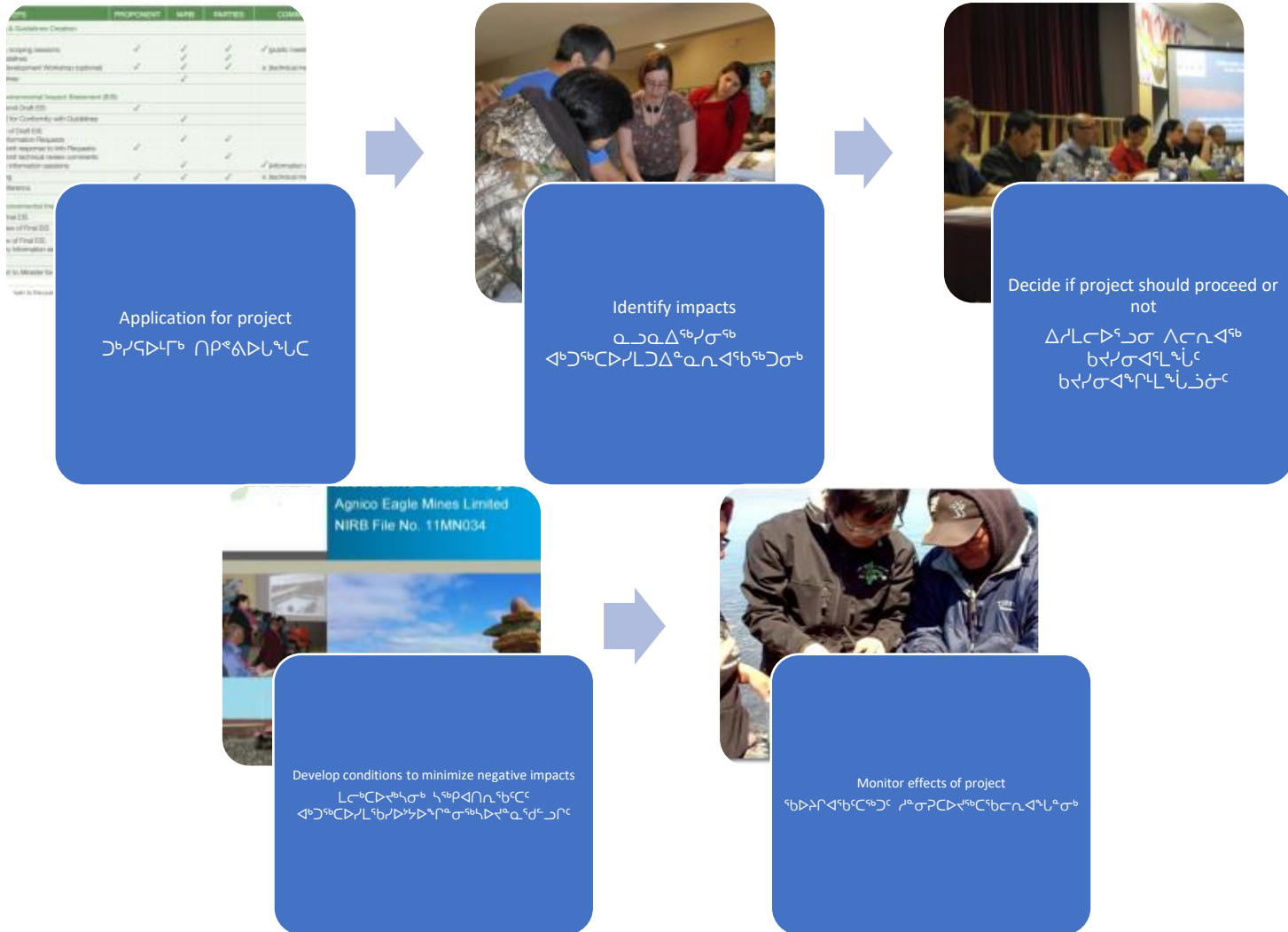
- 
- NIRB**
NUNAVUT IMPACT ENVIRONMENTAL
NUNAVUT AVATILIKIYIN KATIMAYIN

What is the Nunavut Impact Review Board?

- [illegible]



What does the NIRB do?
ፖርቢ፣ከፍተኛው የፍትሕ ሚኒስቴር ጋር በጋራ ይሰራል?





◁▷^{ᶜᵇ}Π_Ω^{ᶜᵇ}⊂Γ▷↗^{ᶜᵇ}ℂ_ℕ◁^ᶜ

NUNAVUT
LAND CLAIMS
AGREEMENT
- BAKER
LAKE INUIT
OWNED LAND



Baker Lake

◁▷^{ᶜᵇ} ∩ ᶜᵇ ⊃[<] ∪ ⊃^{ᶜᵇ} Δ^{ᵃᵇ} ∠^{ᶜᵇ} ∩^{ᵃᵇ}



- December, 2006: NIRB issued Project Certificate (PC) No. 004
- በጥላሊቢያን, 2006: ልዩነት ስርዓት ለጥላሊቢያን ልዩነት ስርዓት (PC) ቁጥር 004
- In 2007, Agnico Eagle Mines Limited acquired the Meadowbank Gold Mine
- ሰኔ 2007, ልዩነት ስርዓት ለጥላሊቢያን ልዩነት ስርዓት (PC) ቁጥር 004
- In 2009, 2016 and 2018, the NIRB amended the PC. 004
- ሰኔ 2009, 2016 እና 2018, ልዩነት ስርዓት ለጥላሊቢያን ልዩነት ስርዓት (PC) ቁጥር 004
- 87 terms and conditions to limit adverse ecosystemic and socioeconomic effects
- 87 የአካባቢውን ልዩነት ስርዓት ለጥላሊቢያን ልዩነት ስርዓት (PC) ቁጥር 004

Project Overview

Mine site 70 km
north of Baker Lake

Camp

Airstrip

Mining infrastructure

Three open pits

Portage

Bay Goose (closed)

Vault

Baker Lake bulk fuel storage facility/marshalling area

Fuel tank farm

Laydown area

110 km all-weather road linking Baker Lake to Meadowbank site

70
 70
 70

- $\wedge C_n \leq \Delta^b$
- $\Gamma^C \leq \Delta^b$
- $\Delta \leq \Sigma^b \leq C_n \leq P \cap \Sigma^c$

$$\begin{array}{c} \Lambda^a \bar{L}^j \sigma^b \\ \triangleright \bar{\psi}^b C \bar{L} \triangleleft \psi^a C^b \end{array}$$

- $\triangleright \triangleleft \cap^b$
- $\triangleleft \triangle \cup^b (\triangleright \triangleleft \cap^b \supset^b)$
- $\supset \triangleright^c$

[illegible]

- $\Delta^{\text{ab}} \Gamma \Delta \Gamma \Delta^{\text{b}}$
- $\Lambda^{\text{cd}} \Gamma^{\text{c}} \Gamma^{\text{c}} \Delta^{\text{cd}}$

110 $\cap_c \Gamma \supset \Delta^{\leq c} d^c$
 $\supset_b L \sigma' \supset \Delta^{\leq c} \Gamma^c$
 $\Delta \supset \supset_b \cap_c \supset_b \supset_c \supset_c$



<>ᑭᓇ ᐅᒪᕈᖃ 2019 ᑲᔨᐅᐸᑦ ᑶᐅᕗᙱᐸ



Baker Lake Marshalling Facility / ᑲᑭᑦᑭᑦᑭᑦᑭᑦᑭᑦ ᑭᑦᑭᑦᑭᑦᑭᑦᑭᑦ ᑭᑦᑭᑦᑭᑦᑭᑦᑭᑦ



All Weather Access Road / ᐱᓕᑦᑐᑦ ᐅᓴᑖᑕᒪᐱᓕᐃᓗᑕ

Meadowbank Gold Mine Project 2018 Site Visit and Observations



Waste Management / ᐱᑕᑦ ᐅᑖᓂᓴᐅᓂᓴ



Water Management / $\Delta \Gamma \triangleright \triangleleft \Gamma \triangleleft \sigma \rho \triangleright \sigma^{\circ} \rho$

Meadowbank Gold Mine Project 2019 Site Visit and Observations

ᐱᐃᐅᐅᐱᐅ ᑲᐃ ᑲᐃᐅᐅᐱᐅ ᑲᐃ 2019 ᐅᐃᐅᐅᐱᐅᐱᐅᐱᐅ ᑲᐃᐅᐅᐱᐅᐱᐅᐱᐅ



Dust Management / >ᐅᐅᐅᐱᐅᐱᐅᐱᐅ ᐱᐃᐅᐅᐱᐅᐱᐅᐱᐅ



Wildlife Management / ᐅᐅᐅᐱᐅᐱᐅ ᐱᐃᐅᐅᐱᐅᐱᐅᐱᐅ

Meadowbank Gold Mine Project 2019 Site Visit and Observations



Mine Site/▶⚡ⒸⒶ



Community Monitoring Consultation

ᓄᓇᓕᓖᓪᓴ ᓂᓴᓐᓂᓕᓖᓪᓴ ᓂᓴᓐᓂᓕᓖᓪᓴ

- 2019 Community Meeting
 - Community members from Baker Lake noted concerns on the following:
 - Dust suppression along the all-weather access road
 - Health of wildlife
 - Monitoring conducted at site
 - Employment

- 2019 ᓄᓇᓕᓖᓪᓴ ᓂᓴᓐᓂᓕᓖᓪᓴ
 - ᓄᓇᓕᓖᓪᓴ ᓂᓴᓐᓂᓕᓖᓪᓴ ᓂᓴᓐᓂᓕᓖᓪᓴ:
 - >ᓴᓐᓂᓕᓖᓪᓴ ᓂᓴᓐᓂᓕᓖᓪᓴ
 - ᓂᓴᓐᓂᓕᓖᓪᓴ ᓂᓴᓐᓂᓕᓖᓪᓴ
 - ᓂᓴᓐᓂᓕᓖᓪᓴ ᓂᓴᓐᓂᓕᓖᓪᓴ
 - ᓂᓴᓐᓂᓕᓖᓪᓴ



ወደፊት ለደብዳቤዎች ክብረት 2019 ነፃነትና ምክር
ለፍትሕና ምክር ለፍትሕና ምክር

[illegible]

ወደፊት ለደብርሲቅ ክብረት 2019 የክልላዊ ሚኒስትር
ለፌዴራል ጋራ ልማት ሚኒስትር

- Fish and Fish Habitat
- $\Delta^{\text{b}} \Delta^{\text{c}}$ Δ^{d} Δ^{e}
- Terrestrial Environment
- Δ^{f} Δ^{g} Δ^{h}



ወደፊት ለደብርሲቅ ክብረት 2019 የክልላዊ ሚኒስትር
ለፌዴራል ጋራ ልማት ሚኒስትር

- Waste Management
- $\angle^c \subset d^c$
- Marine Environment
- $C_n \triangleright^c \Gamma \triangleright C \Delta^c$
- Air Quality
- $\rho_c \triangleright^c \text{ "b } \rho \Delta \sigma^c$



Previous Board Recommendations Summary

ᑲᑎᓚᓱᑦ ᓱᓂᓴᓂ ᐱᑕᑦᑯᓱᓚᑯᑦᑲᑦᑲᑦ ᑯᑯᓂᓴ

Meadowbank Gold Mine Project

- Placement of local area marine monitors
- Suppression of surface dust
- PEAMP
- Deterrents for carnivores and/or raptors

ᐱᑕᑦᑲᑎᓚᑦᑲᑎᓴᓱ ᓂᓱᑯᑯᓂᓴᑲᑦ

- ᑦᑲᑯᓱᓴᑦᑲᑎᓴᓱᓂᓴᓂ ᓂᑦᑲᑎᓂᑲ
- ᑲᑲᓂᓱᐱᑦᑲᑕᐱᑦᓂᑦᑲ
- ᓄᓚᓱᑯᑕᐱᑦ ᓂᑦᑲᑎᑦ
ᐱᓴᑎᓱᓴᑕᓂ
ᓱᐱᓂᓴᑯᓂᓴᓱᓂᓴᓂ ᐱᑦᓚᑯᑯᑦ
- ᑦᑯᓚᑎᑦᓴᑎᑦ ᓂᑦᑲᑎᓂᑲ
ᑎᓴᓱᐱᑯᓱᓴᓂᓴᓂ



★ Whale Tail Pit ᑭᐱᑲᑲᑦ ᑲᐱᑲᑲᑦ ᑲᐱᑲᑲᑦ

★ Meadowbank Gold Mine

ᑲᐱᑲᑲᑦ ᑲᐱᑲᑲᑦ ᑲᐱᑲᑲᑦ ᑲᐱᑲᑲᑦ

Whale Tail Pit Project

ᑲᐱᑲᑲᑦ ᑲᐱᑲᑲᑦ ᑲᐱᑲᑲᑦ

16MN056

★ Baker Lake ᑲᐱᑲᑲᑦ ᑲᐱᑲᑲᑦ

2019-2020 YILI
 NİRB
 NUNAVUM: AVATILIKIYIN KATIMAYIN



- 2019-2020 YILI
 NİRB
 NUNAVUM: AVATILIKIYIN KATIMAYIN

Project Overview

ᐱᓕᓂᐱᓪᓴ ᓴᓐᓄᐃᐅᐅᐅᓂᓴ

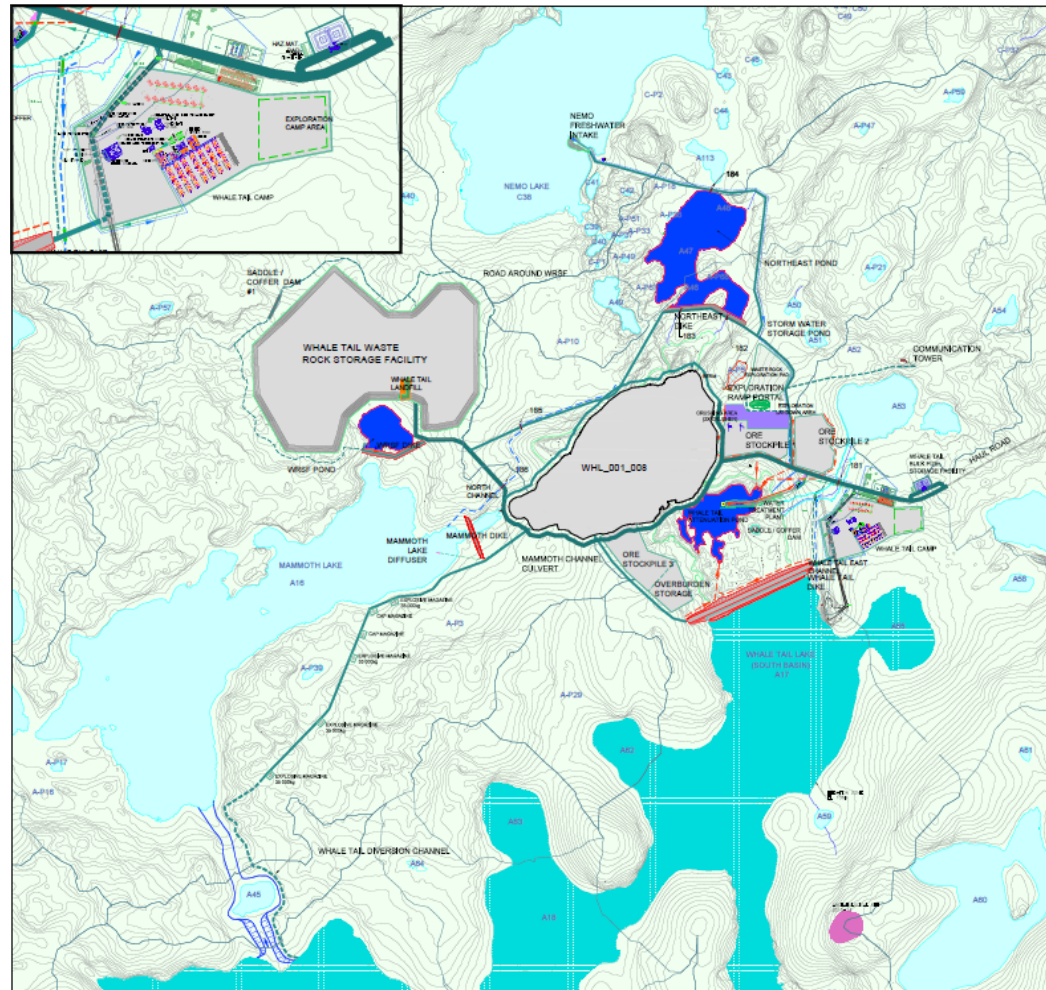
~150 kilometres (km) N of Baker Lake and ~50 km NW of Meadowbank Gold Mine Project

~150 ᐅᓕᓴᐅᐅᓴ ᓐᓄᓴᓴᓂᓴ ᓴᓐᓄᐃᐅᐅᐅᓂᓴ ᐱᓕᓂᐱᓪᓴ
~50 ᐅᓕᓴᐅᐅᓴ ᐅᐃᐃᓴᓴᓂᓴ ᐃᐅᓴᓐᓄᓴ ᓴᓐᓄᐃᐅᐅᐅᓂᓴ
ᐅᓴᓴᓐᓄᓴᐃᓴᓴᓴᓴ

Whale Tail Pit Project located at the Amaruq Property

ᓴᓴᓴᓴᓴᓴᓴᓴ ᐃᓴᓴᓴᓴᓴ ᐅᓴᓴᓴᓴᓴᓴᓴ ᐃᓴᓴᓴᓴᓴᓴ
ᓄᓴᓴᓴᓴᓴᓴ

- Open pit gold mining
- Supporting infrastructure at Amaruq Property
- Use of existing infrastructure at Meadowbank
- Haul road
- ᓄᓴᓴᓴᓴᓴ ᐅᓴᓴᓴᓴᓴᓴᓴ
- ᐱᓕᓂᐱᓪᓴ ᐃᓴᓴᓴᓴᓴᓴ ᐃᓴᓴᓴᓴᓴᓴ
- ᐃᐅᓴᓴᓴᓴᓴᓴ ᐃᐅᓴᓴᓴᓴᓴᓴ
- ᐱᓕᓂᐱᓪᓴᓴᓴ
- ᓴᐅᓴᓴᓴᓴᓴᓴ ᐃᓴᓴᓴᓴᓴᓴ



Whale Tail Pit Project 2019 Site Visit and Observations

ᖃᕈᓇᓗᓕ ᐸᐱᕈᓗᓕ ᐅᓕᓕᓕᓕᓕᓕᓕᓕᓕ 2019 ᐸᓕᓕᓕᓕᓕᓕᓕᓕᓕ ᖃᐅᓕᓕᓕᓕᓕᓕᓕ



Whale Tail Haul Road / ᖃᕈᓇᓗᓕ ᐸᐱᕈᓗᓕ ᐅᓕᓕᓕᓕᓕᓕᓕᓕ



Wildlife Management / ᓕᓕᓕᓕᓕᓕᓕᓕ ᓕᓕᓕᓕᓕᓕᓕᓕᓕ

Whale Tail Pit Project 2019 Site Visit and Observations

ᖃᕈᓇᓚᓚᐅᑦ <ᐱᕈᓐᓚᑦ ᐅᓕᖃᑦᑕᓚᐅᑦᐱᓐᓚ 2019 ᑕᐅᓕᖃᑦᑕᓚᐅᑦᐱᓐᓚ ᖃᐅᓕᓕᓚᓚᐅᑦᐱᓐᓚ



Mine Site/ᐅᓕᖃᑦᑕᓚᐅᑦᐱᓐᓚ



Whale Tail Pit Project 2019 Site Visit and Observations

ᖃᕈᓇᓗᓕᓂᓪᓗ ᐸᓕᓐᓴᓴᓂᓪᓗ ᐸᓕᓐᓴᓴᓂᓪᓗ 2019 ᐸᓕᓐᓴᓴᓂᓪᓗ ᖃᕈᓇᓗᓂᓪᓗ



Dust Management / >ᖃᕈᓇᓗᓂᓪᓗ ᐸᓕᓐᓴᓴᓂᓪᓗ



Waste Management / ᐸᓕᓐᓴᓴᓂᓪᓗ ᐸᓕᓐᓴᓴᓂᓪᓗ



Spill Response Equipment / ᐸᓕᓐᓴᓴᓂᓪᓗ ᐸᓕᓐᓴᓴᓂᓪᓗ

ወደፊት ለደብዳቤዎች ክብረት 2019 የክልላዊ የሥራ
የዕቅድ ሪፖርት ለማቅረብ ይረዳል

- Water Quality
- $\Delta \Gamma^{\text{qb}}$
- Socio-economic
- $\Delta \text{m}^{\text{r}} \wedge \text{e}^{\text{c}} \text{c} \text{d} \sigma^{\text{r}} \text{c}$
- Birds and bird Habitat
- $\Gamma^{\text{u}} \Gamma \text{d} \rho^{\text{r}} \text{c} \text{ m}^{\text{r}} \text{d} \Gamma^{\text{u}} \text{r}^{\text{c}} \text{c}$
- Hydrogeology and Hydrology
- $\Delta \text{L} \text{c} \text{r} \text{u} \sigma^{\text{qb}}$ $\text{d} \text{c} \text{r} \text{u} \sigma^{\text{r}} \text{c}$
- Geological Features, Soils and Permafrost
- $\triangleright \text{h} \text{c} \text{r} \text{u} \sigma^{\text{qb}}$, $\Delta^{\text{c}} \text{r}^{\text{qb}}$, $\text{m}^{\text{r}} \text{p}^{\text{r}} \text{p} \sigma^{\text{u}} \text{l}$
- Aquatic Environment
- $\Delta \text{L}^{\text{r}} \Gamma \triangleright \text{C} \Delta^{\text{c}} \text{d} \text{e} \Gamma^{\text{u}} \text{l}^{\text{c}} \text{c}$



ወደፊት ለደብዳቤዎች ክብረት 2019 የክልላዊ የሥራ
የዕቅድ ሪፖርት ለማቅረብ ይረዳል

- Noise and vibration
- $\sigma \wedge^{\epsilon_b} \sigma^{\epsilon_b} \rightarrow \sigma^{\epsilon_b}$
- Accidents and Malfunctions
- $\sigma^{\epsilon_b} \rightarrow \sigma^{\epsilon_b}$



ወደፊት ለደብዳቤዎች ክብረት 2019 የክልላዊ የሥራ
የዕቅድ ሪፖርት ለማቅረብ ይረዳል

- Terrestrial Environment
- CO_2 CH_4
- Marine Environment
- C_2H_6 C_3H_8
- Air Quality
- H_2 H_2O



Previous Board Recommendations Summary

ბიზნესის რეკომენდაციების შეჯამება

Whale Tail Pit Project

- Suppression of surface dust
- Dust monitoring
- Project infrastructure and wildlife crossings

პროექტის მიზანშეწონიერების
დადგენის მიზნით

- >დამცავი ღონისძიებები
- >დამცავი ღონისძიებების განხორციელება
- დამცავი ღონისძიებების განხორციელების
დადგენის მიზნით



Socio-Economic Summary

- Original prediction for Nunavummiut employment was: 42% at Whale Tail
 - Total of 355 Inuit employees out of 1033 total workforce at the end of 2019 (~34%)
 - Total female employment: 20%
 - Most Inuit employees hired from Baker Lake (57%)
 - NTI Business Spending (\$): ~62% of total

Agnico Eagle's COVID-19 Update

- All employees are tested on-site
 - No interaction between mine personnel and local communities
 - Engagement with community members, regulators and stakeholders occurs through teleconference, emails, video and facebook updates.
 - Postponed certain activities:
 - Terrestrial Advisory Group site visit
 - Health Canada study of country foods
 - Study to use drones to monitor caribou
 - Monitoring is still occurring in the 2020 year

