



Alternatives Analysis

Phase 2 Proposal

Presentation Outline

- Approach to Assessment
- Integration of Public Consultation and IQ
- Alternatives to the Project
- Alternative Means of Carrying out the Project
- Conclusion



Approach to Assessment

Performance Criteria

1. Technical Feasibility
 2. Cost Effectiveness
 3. Environmental Acceptability
 4. Community Acceptability
- Performance criteria qualitatively evaluated
 - Ratings given as preferred, acceptable, or unacceptable
 - Alternatives not technically feasible or economically viable, not carried forward



Integration of Public Consultation and IQ

- Community acceptability an important factor
- 2006 - 2009 Inuit Knowledge Study
- 2015 - 2016 Community Workshops
- 2019 IQ Risk Workshops
- 2019 Crossing Selection Workshop
- Community meetings



Alternatives to the Project

- Cease, Maintain or Increase Production
 - Cease or maintain production at current levels not economically viable
 - Steensby requires significant capital investment not currently available to Baffinland
 - **Phase 2 Proposal preferred**

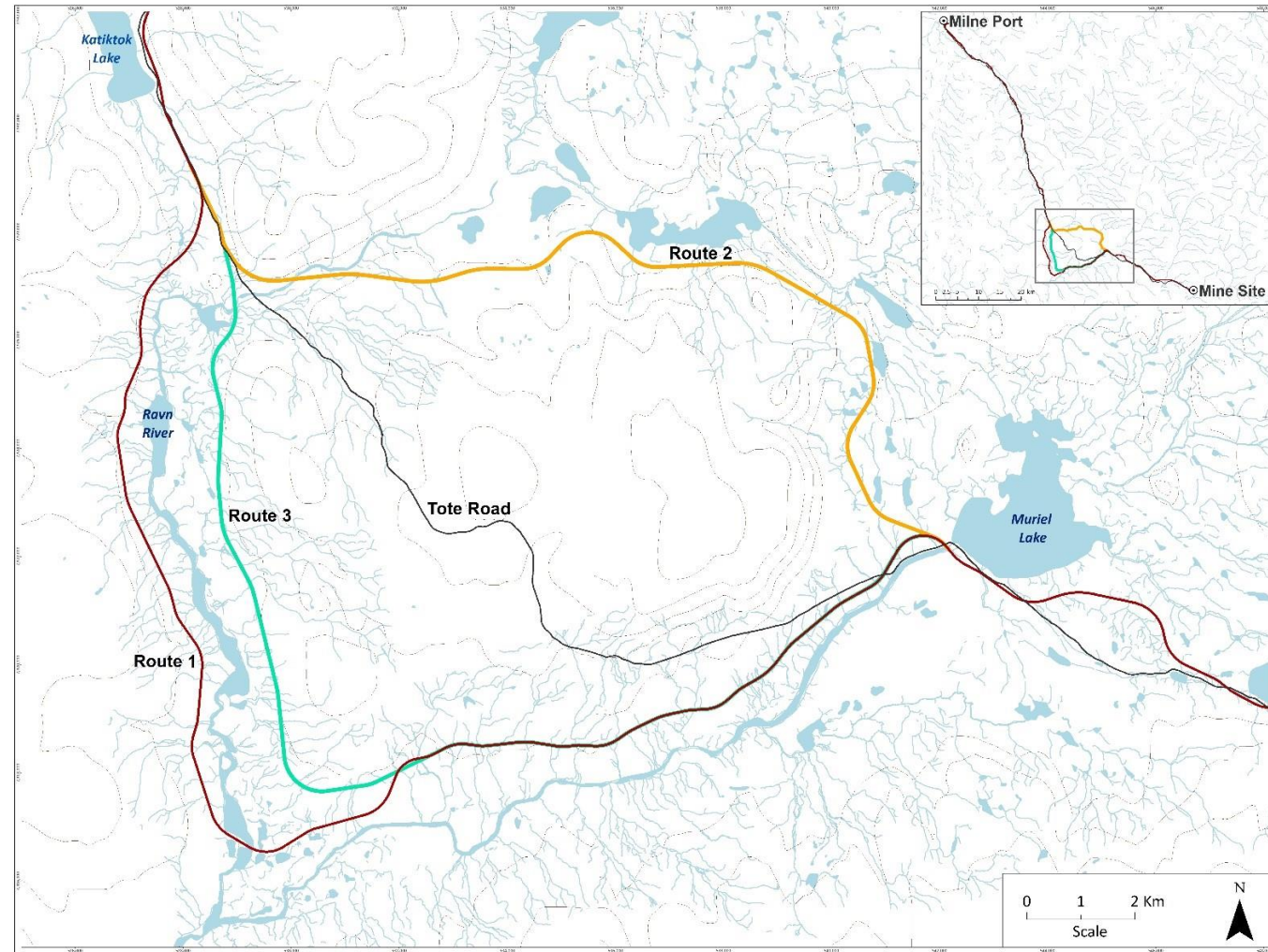


Alternative Means of Carrying out the Project

Component	Alternatives Considered
Shipping	Eclipse Sound and Navy Board Inlet
Shipping season	Open Water; 8.5 Months; Extended Season
Transportation of ore from Mine Site to Milne Port	Continued use of Tote Road North Railway
Rail Deviation	12 routes considered during design. Routes 1, Route 2, Route 3

Railway Alignment

- Two alternative deviation routes identified during Crossing Selection Workshop
 - Route 1 – proposed
 - Route 2 – rejected due to environmental, operational and safety risks
 - Route 3 – acceptable alternative
- Proposed Term and Condition:
Baffinland will relocate the deviation to Route 3, subject to:
 - *Geotechnical suitability*



Conclusion

- The Phase 2 Proposal is required for sustained economic viability of the Project
- The Phase 2 Proposal was developed through a substantive assessment of alternatives
- Baffinland is committed to work with regulators and the communities to ensure the environmental effects of the Phase 2 Proposal are effectively managed





Questions?

