



NIRB Uuktuutinga Ihivriughikhamut #125566

Quarry pit

Uuktuutinga Qanurittuq: New

Havaap Qanurittunia: Pits and Quarries

Uuktuutinga Ublua: 9/28/2020 1:30:05 PM

Period of operation: from 0001-01-01 to 0001-01-01

Piumayaat Angirutinga: from 0001-01-01 to 0001-01-01

Havauhikhaq Ikayuqtinga: Kelly Bergsma
Hiku Prijects
P.O Box 2051
Cambridge Bay Nunavut X0B0C0
Canada
Hivayautit Nampanga:: (867)983-6385, Kayumiktukkut Nampanga::

QANURITTUT

Tukihiannaqtunik havaariyaumayumik uqauhiuyun

Qablunaatitut: We at HIKU Projects are looking to access to the Quarry at the Gravel Site, we would like to access is between West Arm and Gravel Pit. The site has been used in the past from Kitnuna. And the Quarry can be accessed by existing roads, and are looking to access 200x200 sq. meters and would access 1000 cubic meters for this season of 2020. And may require more in the upcoming seasons. What we are currently looking to access is Sand & Gravel. And would be going through N.I.R.B here in Cambridge Bay, if granted through your office.

Uiviititut: N/A

Inuktitut: N/A

Inuinnaqtun: Uvaptngni HIKU Havaanut tukhiutiyugut Uyaraqtarnirnut Hiurangni hauvigiyumaviuta Akulailgumit, uvanngat akunngani uvanilu Akulailgumit. Hamna hiuraqtarviuvakhimayug uvanngat Kitnuna-mit, una uyaraqtarvik atuqtauvakhuni apquhiuqtaagtut. Qiniqhimayugut hiuraqturumavluta 200x200 kikkainnaatigut miitastigut. Tukhiqtuguttauq 1000 avataatigut miitastigut ukiungani atuqtavut 2020mi. Aippaagunngurumiluuniit. Tadj qiniqhimayavut hiurainnarnit uyarannuallu, tukhiutiyavut ukunanngat Nunavut Avatilikiyin Katimavianit hamani Iqaluktuuttiarmi naammagiyaupat havagviit.

Personnel

Personnel on site: 2

Days on site: 20

Total Person days: 40

Operations Phase: from 2020-08-29 to 2021-10-28

Operations Phase: from 2020-08-31 to 2020-10-30

Closure Phase: from 2020-10-29 to 2021-05-29

Post-Closure Phase: from to

Hulilukaarutit

Inigiya	Hulilukaarut Qanurittuq	Nunannga Qanurittaakhaanik	Initurlinga qanuritpa	Initurlinga utuqqarnitat unaluuniit Ingilraaqnitat Uyarannguqtut akhuurninnga	Qanitqiyauyuq qanitqiamut nunallaat kitulluuniit ahiruqtaliyainnit nuna
?	Quarry/Borrow pit	Municipal	Kitnuna did work here in the past.	N/a	Cambridge Bay

Nunaliin Ilauyun, Aviktuqhimayuniitunullu Ikayuuhiarunguyun

Nunauyuq	Atia	Timiuyuq	Upluani Uqaqatigiyaungmata
Ikaluktuttiak	Kevin Taylor	Hamlet of Cambridge Bay	2020-09-01

Angiuttauvaktunik

Naunaiqlugu nunanga talvani havauhikhaq ittuq:

Transboundary
Kitikmeot

Angiuttauvaktunik

Munariniqmut Ayuittiaqtuq	Angirutinga Qanurittuq	Tadja Qanurittaakhaanik	Ublua Tuniyauyuq/Uuktuqtuq	Umikvikhaa Ublua
Alaanut	Peter Scholz Nunavut Planning Commission	Active	2020-09-01	

Project transportation types

Transportation Type	Qanuq Atuqtauniarmangaa	Length of Use
Land		

Project accomodation types

Nunauyuq

Ihuaqutivaluin Atuqtauyukhan

Hanalrutit atuqtaunahuat (ukuallu ikuutat, pampiutainnik, tingmitinik, akhaluutinik, hunaluuniit)

Hanalrutit Qanurittuq	Qaffiuyut	Aktikkulaanga – Qanurittullu	Qanuq Atuqtauniarmangaa
Information is not available			

Qanurittuq Urhuqyuaq unalu Qayangnaqtut Hunavaluit Aturninnga

Qanurittuq urhuqyuaq hunavaluit aturninnga:	Urhuqyuaq Qanurittuq	Qaffiuyut qattaryut	Qattaryuk Aktikkulaanga	Atauttimut Qaffiuyut	Ilanga	Qanuq Atuqtauniarmangaa
Information is not available						

Imaqmik Aturninnga

Ubluq qanuraaluk (m3)	Aturumayain imavaluin utiqtittagaani qanuq	Atulirumayain imavaluin utiqtittagani humi
0		

Iqqakuq

Ikkakunik Munakgiyauyunik

Havauhikhaq Hulilukaarut	Qanurittuq Iqqakut	Ihumagiyauyuq Qanuraaluktut Atuqtait	Qanuq Iqqakuurniarmangaa	Halummaqtirarnirutikhan piyutin
Information is not available				

Avatiliriniqmut Ayurhautingit:

N/A ?

Additional Information

SECTION A1: Project Info

SECTION A2: Allweather Road

SECTION A3: Winter Road

SECTION B1: Project Info

SECTION B2: Exploration Activity

SECTION B3: Geosciences

SECTION B4: Drilling

SECTION B5: Stripping

SECTION B6: Underground Activity

SECTION B7: Waste Rock

SECTION B8: Stockpiles

SECTION B9: Mine Development

SECTION B10: Geology

SECTION B11: Mine

SECTION B12: Mill

SECTION C1: Pits

SECTION D1: Facility

SECTION D2: Facility Construction

SECTION D3: Facility Operation

SECTION D4: Vessel Use

SECTION E1: Offshore Survey

SECTION E2: Nearshore Survey

SECTION E3: Vessel Use

SECTION F1: Site Cleanup

SECTION G1: Well Authorization

SECTION G2: Onland Exploration

SECTION G3: Offshore Exploration

SECTION G4: Rig

SECTION H1: Vessel Use

SECTION H2: Disposal At Sea

SECTION I1: Municipal Development

Qanurittuq Ittunik Avatinga: Avatingalluanga

Qanurittuq Ittunik Avatinga: Inuuhimayunut Avatinga

Qanurittuq Ittunik Avatinga: Inungit-maniliurutingit Avatinga

Miscellaneous Project Information

Naunaiyainiq ukuninnga Ayurhautingit unalu Piumayaat Ikikliyuumiutinahuarutit

Tamatkiumayunik Ihuikgutivaktunik

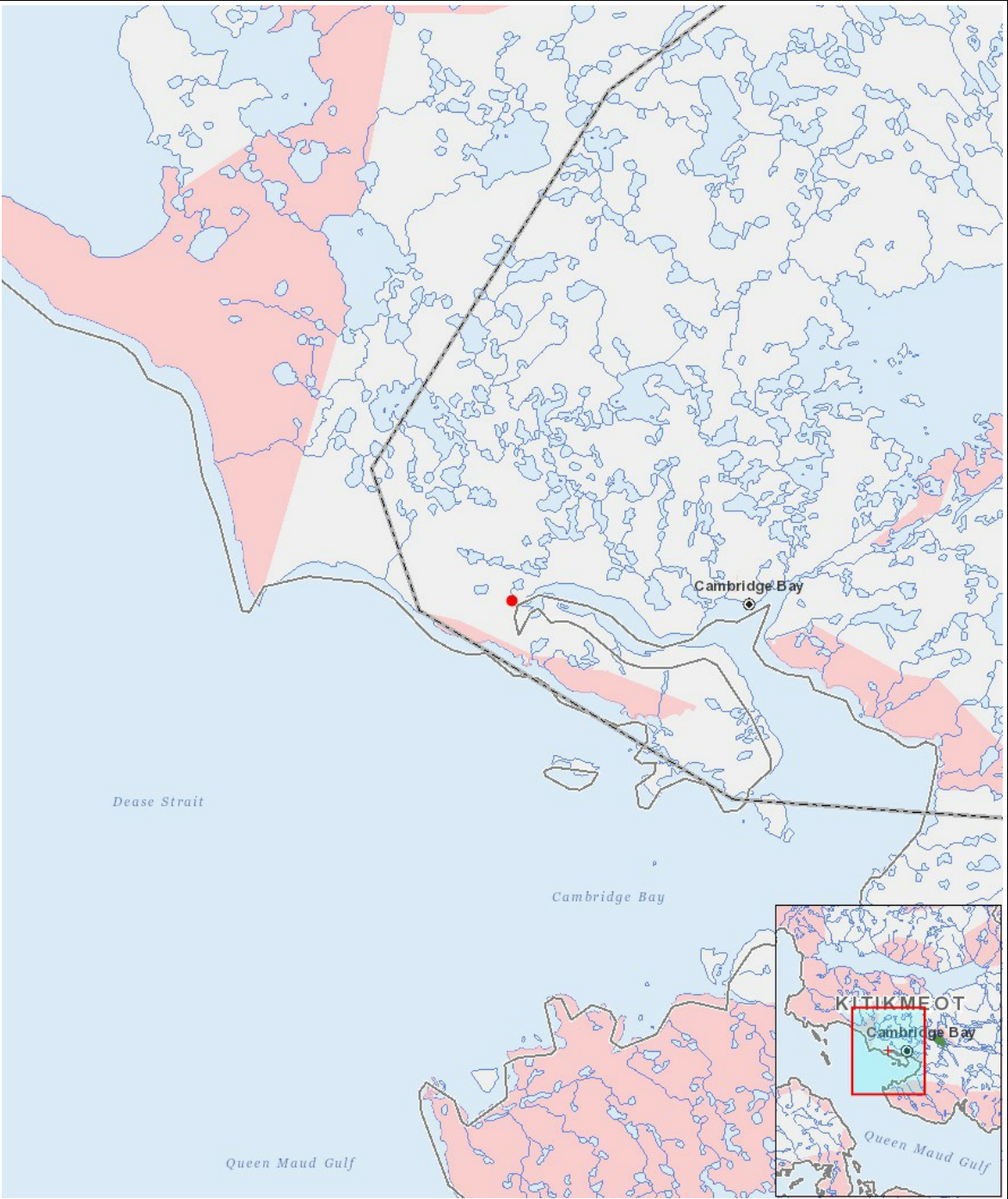
Impacts

Ilitariyauniq Avatiliriniqmut Ayurhautingit

		PHYSICAL	Designated environmental areas	Ground stability	Permafrost	Hydrology / Limnology	Water quality	Climate conditions	Eskers and other unique or fragile landscapes	Surface and bedrock geology	Sediment and soil quality	Tidal processes and bathymetry	Air quality	Noise levels	BIOLOGICAL	Vegetation	Wildlife, including habitat and migration patterns	Birds, including habitat and migration patterns	Aquatic species, incl. habitat and migration/spawning	Wildlife protected areas	SOCIO-ECONOMIC	Archaeological and cultural historic sites	Employment	Community wellness	Community infrastructure	Human health
Havakvinga																										
-		-	-	-	-	-	-	-	-	-	-	-	-	-	-	-	-	-	-	-	-	-	-	-	-	-
Aulapkaininnga																										
-		-	-	-	-	-	-	-	-	-	-	-	-	-	-	-	-	-	-	-	-	-	-	-	-	-
Piiqtauniq																										
-		-	-	-	-	-	-	-	-	-	-	-	-	-	-	-	-	-	-	-	-	-	-	-	-	-

(P = Nakuuyuq, N = Nakuungittut unalu mikhilimaittuq, M = Nakuungittut unalu mikhittaaqtuq, U = Naluyauyuq)

Havaariyauyukhamut Nayugaa



List of Project Geometries

1	polygon	?
2	point	?