



Kelly Bergsma
Hiku Projects
P.O. Box 2051
Cambridge Bay Nunavut X0B0C0
Canada
ᐃᓴᑦ ᐃᓴᑦ: (867)983-6385, ᓱᑲᓱᑯᑦ:

[illegible]

ᑭᓱᑦᑭᓱᑦ: We at HIKU Projects are looking to access to the Quarry at the Gravel Site, we would like to access is between West Arm and Gravel Pit. The site has been used in the past from Kitnuna. And the Quarry can be accessed by existing roads, and are looking to access 200x200 sq. meters and would access 1000 cubic meters for this season of 2020. And may require more in the upcoming seasons. What we are currently looking to access is Sand & Gravel. And would be going through N.I.R.B here in Cambridge Bay, if granted through your office.

▷ ΔΑΠΝΩ: N/A

$\Delta_{\mathcal{O}^b \cap \mathcal{O}^c}$: N/A

Inuinnaqtun: Uvaptingni HIKU Havaanut tukhiutiyugut Uyaraqtarnirnut Hiurangni hauvigiyumaviuta Akulailgumit, uvanngat akunngani uvanilu Akulailgumit.Hamna hiuraqtarviuvakhimayug uvanngat Kitnuna-mit, una uyaraqtarvik atuqtauvakhuni apquhiuqtaagtut.Qiniqhimayugut hiuraqturumavluta 200x200 kikkainnaatigut miitastigut.Tukhiqtuguttauq 1000 avataatigut miitastigut ukiungani atuqtavut 2020mi.Aippaagunngurumiluuniit. Tadsja qiniqhimayavut hiurainnarnit uyarannuallu, tukhiutiyavut ukunannat Nunavut Avatilikiyin Katimavianit hamani Iqaluktuuttiarmi naammagiyaupat havagviit.

Personnel

Personnel on site: 2

Days on site: 20

Total Person days: 40

Operations Phase: from 2020-08-28 to 2021-10-27

Operations Phase: from 2020-08-30 to 2020-10-29

Closure Phase: from 2020-10-28 to 2021-05-28

Post-Closure Phase: from to

ለፍጥነት ለማረጋገጥ የሚያስፈልጉትን መረጃ ያስገቡ

ደረጃ	የጥገና ስራው ለፍጥነት ለማረጋገጥ የሚያስፈልጉትን መረጃ ያስገቡ	የጥገና ስራው ለፍጥነት ለማረጋገጥ የሚያስፈልጉትን መረጃ ያስገቡ	ገንዘብ ስራው ለፍጥነት ለማረጋገጥ የሚያስፈልጉትን መረጃ ያስገቡ	ፋይናንስ ስራው ለፍጥነት ለማረጋገጥ የሚያስፈልጉትን መረጃ ያስገቡ	የጥገና ስራው ለፍጥነት ለማረጋገጥ የሚያስፈልጉትን መረጃ ያስገቡ
Towards Gravel Pit. Kitnuna's old yard area	Quarry/Borrow pit	Municipal	Kitnuna did work here in the past.	N/a	Cambridge Bay

ለፍጥነት ለማረጋገጥ የሚያስፈልጉትን መረጃ ያስገቡ ለፍጥነት ለማረጋገጥ የሚያስፈልጉትን መረጃ ያስገቡ

የጥገና ስራው	ሰራተኛው	የጥገና ስራው ለፍጥነት ለማረጋገጥ የሚያስፈልጉትን መረጃ ያስገቡ	የጥገና ስራው ለፍጥነት ለማረጋገጥ የሚያስፈልጉትን መረጃ ያስገቡ
ፋይናንስ ስራው	Kevin Taylor	Hamlet of Cambridge Bay	2020-09-01

ᄒᄆᅃᆫ ᄇᄊᅃᄂᆺ ᄋᆯᆮᄌᄀᄆᄀᄆᄀ

$a^b r^c \wedge c^e d^f e^g h^i j^k$ በበፍጋሪ:

Transboundary

Kitikmeot

[illegible][illegible]

Project transportation types

Transportation Type	Estimated Number of Vehicles	Length of Use
Land		

Project accomodation types

[illegible]

$\triangleleft^b C d^c$
$$\Delta^b C d_c n_\sigma \Delta^q \sigma^q b$$
[illegible] $\Delta \rho_{\text{NFC}}^{\text{C}} = \Delta \rho_{\text{NFC}}^{\text{C}} + \Delta \rho_{\text{NFC}}^{\text{C}}$

small impact but will be mitigated by very experienced individual that has worked on many projects in Alberta working for companies in the oil patch. work will be completed to a high level of detail.

Additional Information

SECTION A1: Project Info

SECTION A2: Allweather Road

SECTION A3: Winter Road

SECTION B1: Project Info

SECTION B2: Exploration Activity

SECTION B3: Geosciences

SECTION B4: Drilling

SECTION B5: Stripping

SECTION B6: Underground Activity

SECTION B7: Waste Rock

SECTION B8: Stockpiles

SECTION B9: Mine Development

SECTION B10: Geology

SECTION B11: Mine

SECTION B12: Mill

SECTION C1: Pits

SECTION D1: Facility

SECTION D2: Facility Construction

SECTION D3: Facility Operation

SECTION D4: Vessel Use

SECTION E1: Offshore Survey

SECTION E2: Nearshore Survey

SECTION E3: Vessel Use

SECTION F1: Site Cleanup

SECTION G1: Well Authorization

SECTION G2: Onland Exploration

SECTION G3: Offshore Exploration

SECTION G4: Rig

SECTION H1: Vessel Use

SECTION H2: Disposal At Sea

SECTION I1: Municipal Development

ᐱᓪᓇ ᐱᓇᐱᓪᓇ ᐱᓪᓇᐱᓪᓇ ᐱᓪᓇᐱᓪᓇ ᐱᓪᓇᐱᓪᓇ

get materials from a previously used quarry site.

ᐱᓪᓇ ᐱᓇᐱᓪᓇ ᐱᓪᓇᐱᓪᓇ ᐱᓪᓇᐱᓪᓇ ᐱᓪᓇᐱᓪᓇ

disturbed tundra

ᐱᓪᓇ ᐱᓇᐱᓪᓇ ᐱᓪᓇᐱᓪᓇ ᐱᓪᓇᐱᓪᓇ ᐱᓪᓇᐱᓪᓇ ᐱᓪᓇᐱᓪᓇ

all local travel routes will be maintained open so people can access their cabins or travel through for hunting.

Miscellaneous Project Information

ᐱᓪᓇᐱᓪᓇ ᐱᓪᓇᐱᓪᓇ ᐱᓪᓇᐱᓪᓇ ᐱᓪᓇᐱᓪᓇ ᐱᓪᓇᐱᓪᓇ

any garbage brought to site will be taken out and properly disposed of.spill kits will be available with the vehicle and equipment. all spills will be properly reported and cleaned up.all local regulations will be followedwildlife will be watched for and avoided if and when required if materials sourced during spring.

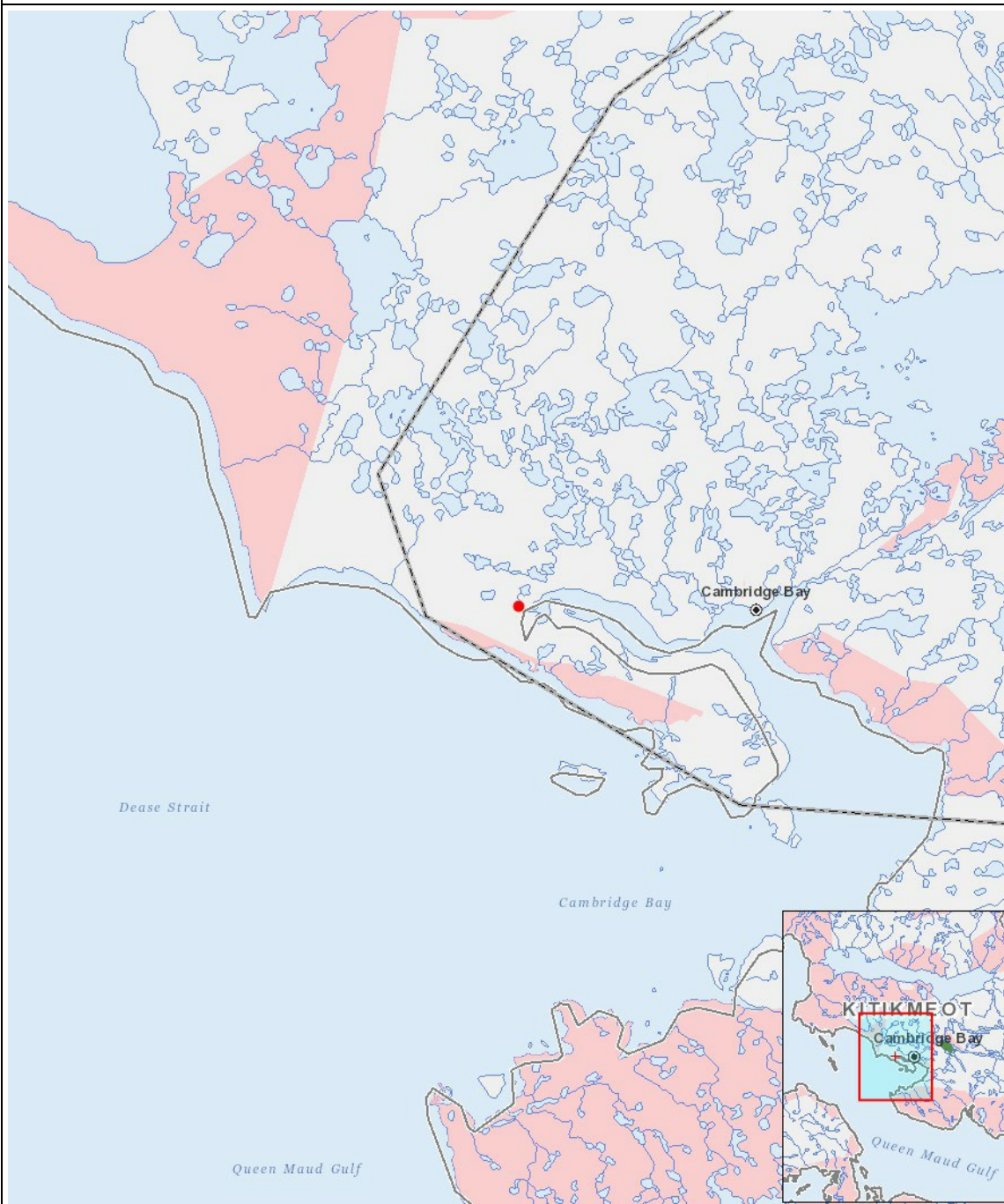
Cumulative Effects

limited cumulative effects as there is some work in the area by other local developers.

Impacts

$\omega \rightarrow \omega \Delta^{\epsilon_b} C D \sigma^{\epsilon_c} \Gamma^c$ $\Delta^c \cap \Gamma D C \dot{\sigma}^c \dot{\gamma}^c$ $\Delta^b \dot{\gamma}^b C D \Gamma L \dot{\gamma}^c$

[illegible]
$$(P = \langle b \rangle \Delta \langle p \rangle \langle \lambda \rangle \langle a \rangle \langle b \rangle)^C, N = \langle b \rangle \langle p \rangle \langle \lambda \rangle \langle \Delta \rangle \langle a \rangle \langle b \rangle)^C \langle \Delta \rangle \langle p \rangle \langle \lambda \rangle \langle b \rangle \langle \Delta \rangle \langle a \rangle \langle p \rangle)^C, M = \langle b \rangle \langle p \rangle \langle \lambda \rangle \langle \Delta \rangle \langle a \rangle \langle b \rangle)^C \langle \Delta \rangle \langle p \rangle \langle \lambda \rangle \langle b \rangle \langle \Delta \rangle \langle a \rangle \langle b \rangle)^C, U = \langle b \rangle \langle \Delta \rangle \langle \lambda \rangle \langle a \rangle \langle p \rangle \langle b \rangle)$$



List of Project Geometries

- | | | |
|---|---------|---|
| 1 | polygon | Towards Gravel Pit. Kitnuna's old yard area |
| 2 | point | ? |