

ርዕዮታችን ለሕዝብ
ርስዎችን ለማድረግ ነው



ጤናማ እና ጥሩ

- $\triangleright \sigma^{\leftarrow b} \cdot m^c \cdot m \cdot a^{\leftarrow c} \triangleleft^c$
- $\text{TEMP} \supset^b \supset \Delta^c$
- $\text{fb} \triangleright \text{th} \Delta \sigma^c \cdot \text{J}^c \triangleleft^L \text{L} \supset \triangleleft^{\text{fir}} \supset \triangleleft^{\text{fir}} \triangleleft^{\text{fb}} \text{nc} \text{nc} \sigma^c \cdot \text{J}^c \triangleleft^c \text{a} \triangleright \dot{\text{nc}}$
- $\triangleleft \wedge^{\text{fb}} \text{d} \dot{\text{nc}}$

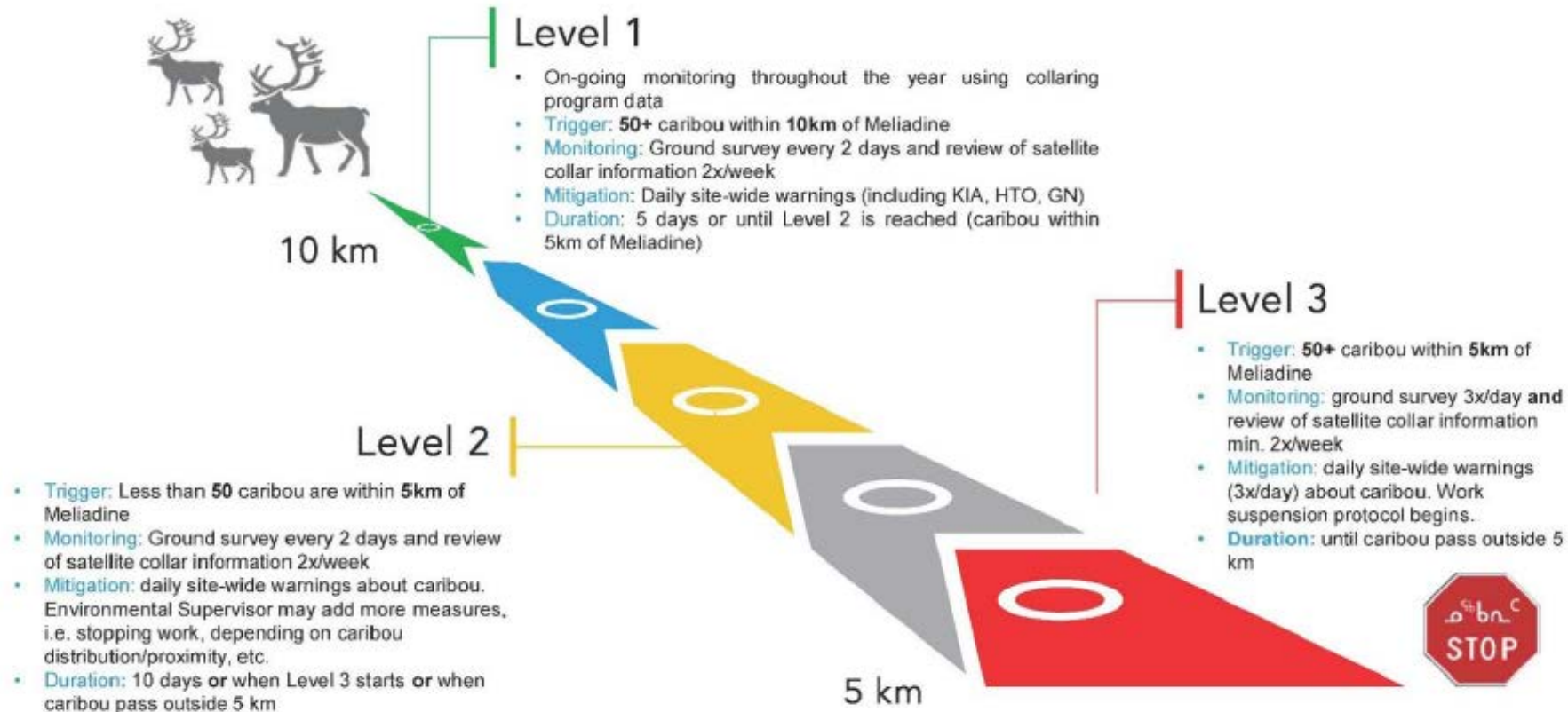


▷σ<̂μ^c με^εΥΔ^c

TEMMP Δ^c



DECISION TREE – MELIADINE SITE



- $\triangleleft^b \dot{\sigma}^b d^b d^c \mid C^{\dagger} \dot{\nu}^{\dagger} \triangleleft^{\dagger} \Gamma^c C^{\dagger} \triangleright^{\dagger} c^{\dagger} \Gamma^c d^{\dagger} \dot{\nu}^{\dagger} d^{\dagger} \cap C^{\dagger} \triangleright^{\dagger} \dot{\nu}^{\dagger}$

- $$\triangleleft^b \dot{\sigma} d^b d^c \mid C \Gamma^c \triangleleft^c \Gamma^c C \triangleleft^c \Gamma^c d \Delta^c \Gamma^b d \Delta \cap C \triangleleft^c \Gamma^b$$

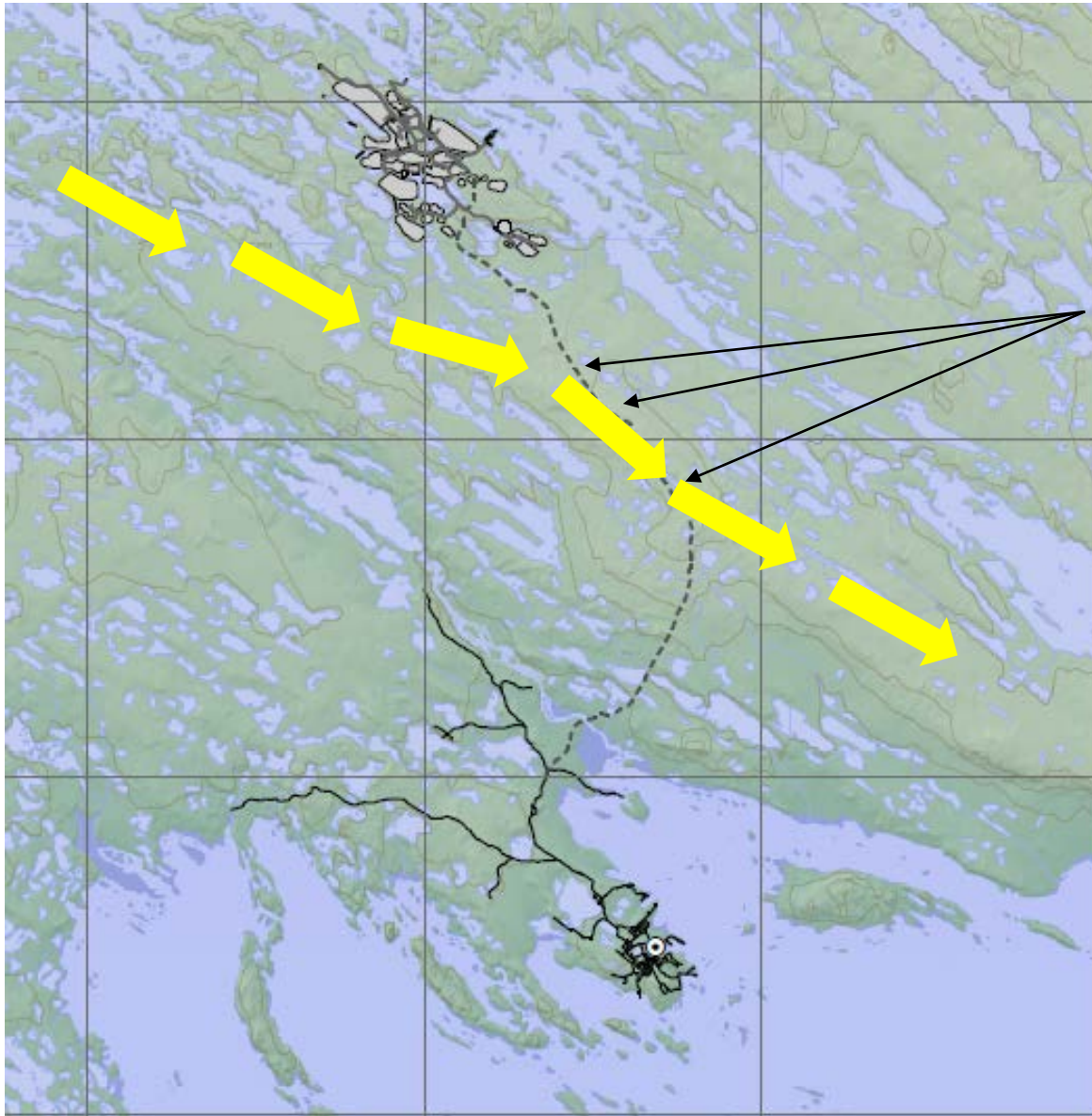
- $\Delta^b \sigma^d \sigma^c \dot{\bar{b}} \bar{c}^b \rho \sigma \Delta^b \supset^c 80-90\% - \bar{u} \sigma^c \rho^c \supset^c \Delta^L \supset^b \Delta \rho \Delta \supset^b \dot{\bar{c}}^b$
 $\Delta^c \bar{d} \bar{u} \Delta^b \bar{c}^c \supset^c \bar{u}^c \Delta^L \supset^c \bar{u}^c \wedge \Delta \sigma^b \supset^c \sigma \Delta^b \supset^b \rho \bar{u} \sigma \Delta^c \text{TEMP}$

[illegible]



ՖԵԴԵՐԱԿՆԵՐԻ ՎԵՐԵՐԻՆԵՐՆԵՐԻ
ՎԵՐԵՐԻՆԵՐՆԵՐԻ ՎԵՐԵՐԻՆԵՐՆԵՐԻ

ፍፅላት ልማት - ጋራ ልማት ለፍፅላት

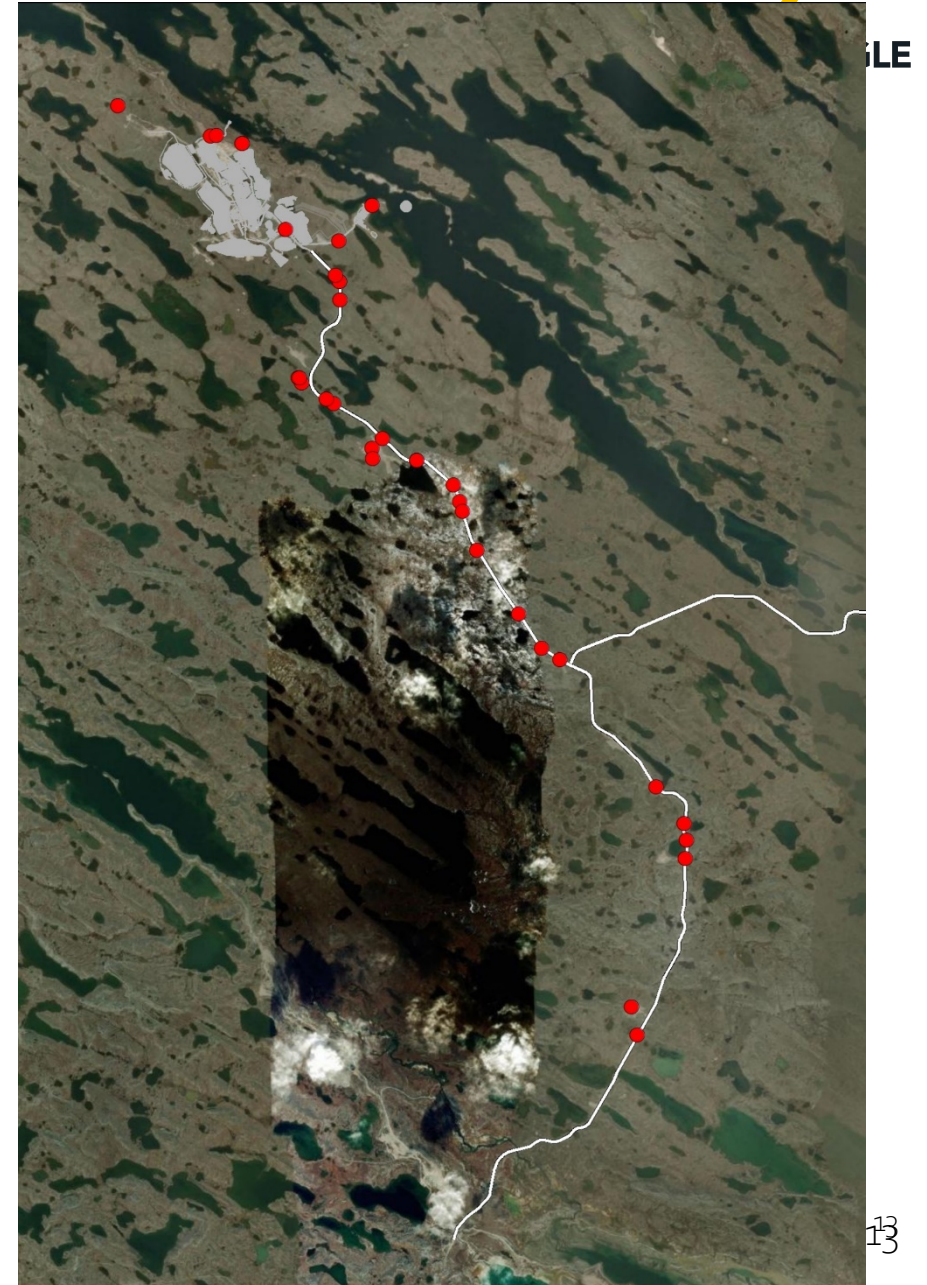


AGNICO EAGLE

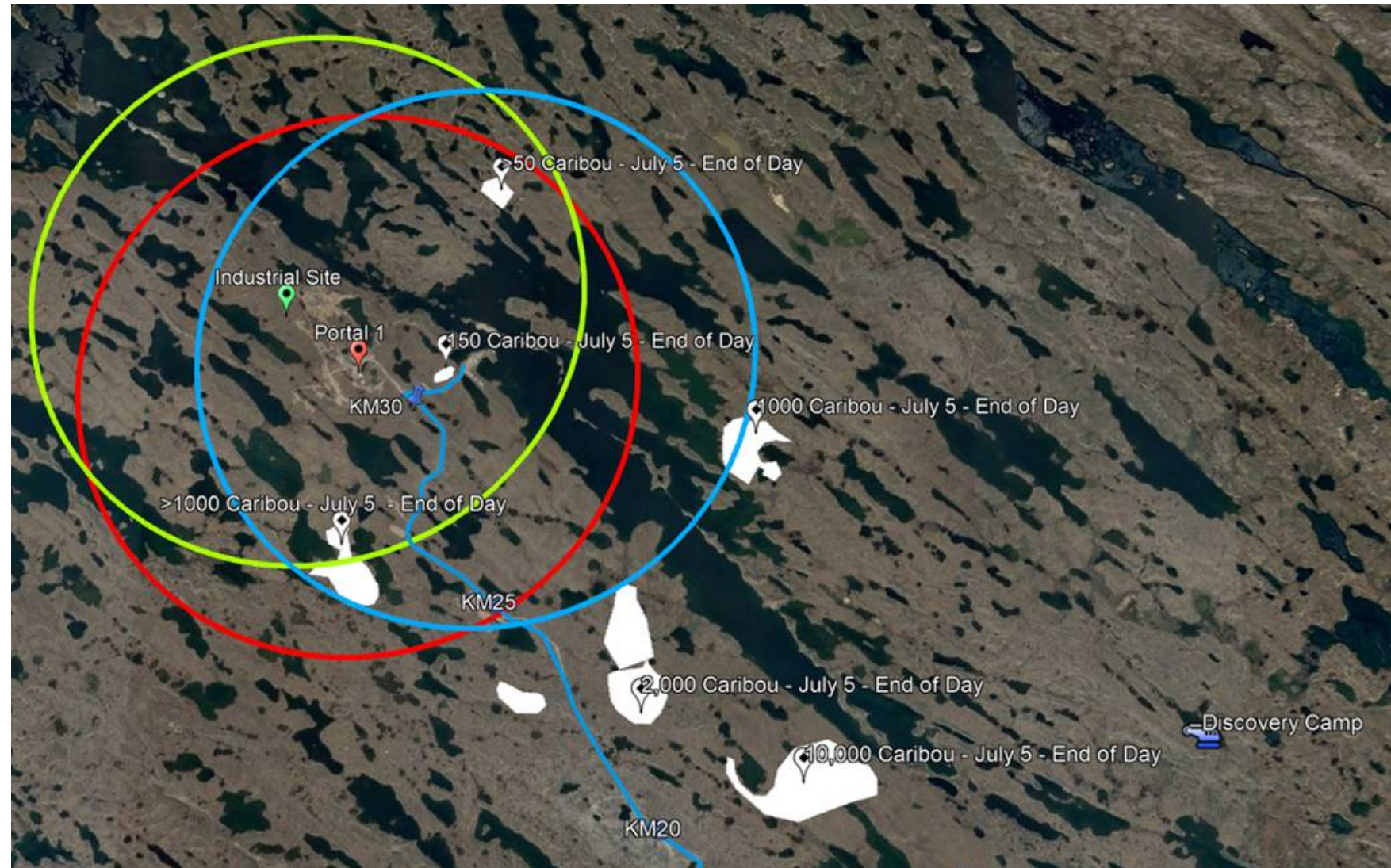
[illegible]

$\mathfrak{b} \triangleright \lambda \Delta \dot{\sigma}^c \mathfrak{b} \triangleright \lambda \Delta \mathfrak{b} \supset^c \mathfrak{b} \prec \lambda \mathfrak{b}^c \sigma^c \Delta \sigma \triangleright \lambda^c$
 $\triangleleft \supset^c \mathfrak{b}^c \Delta \supset \triangleleft \mathfrak{b}^c \mathfrak{b}^c \supset^c \Delta \mathfrak{b}^c \delta \triangleright \prec \supset \mathfrak{b}^c (16, 24, 25 \text{ } \rho \text{ } \Gamma \text{ } \Gamma).$



[illegible][illegible]

$\varphi^c \cap \sigma^c \cap \mu^c$
 $\varphi^c \cap \Delta^c \cap \sigma^c \cap \mu^c$
 $\varphi^c \cap \sigma^c \cap \mu^c \cap \Delta^c$
 $\mu^c \cap \sigma^c \cap \Delta^c$
 $\mu^c \cap \Delta^c$
 $\mu^c \cap \sigma^c$
 $\mu^c \cap \Delta^c$
 $(\mu^c \cap \sigma^c)$.





ՎԵՐՈՒՄԻՆՆԵՐ ?