

ርዕዮታችን ለራሷ  
ርስዋሽታችን ወልድና ወልደርዳሽ ርስዋሽታችን



ፖሊሲ - ልማት ምርትና አገልግሎት/ፖለቲካ

- $\rho^{\leq} \supset \rho^b \triangleleft \supset^{\mathfrak{b}} \subset \supset \sigma^{\leq}$
- $\mathfrak{b} \supset \Delta^{\subset} \supset \rho \supset \rho \sigma^{\mathfrak{b}} \triangleleft^{\mathbb{L}} \supset \mathfrak{b} \supset \Delta^{\leq} \sigma \triangleleft^{\mathfrak{c}} \sigma^{\leq}$
- $\dot{\wedge}^{\mathfrak{b}} \subset \supset \sigma^{\leq} \supset^{\subset} / \supset \cap^{\mathfrak{b}} \cap \cap \rho \sigma^{\mathfrak{c}} \supset^{\subset} <^{\mathfrak{c}} \mathfrak{a} \supset \cap$
- $\triangleleft \wedge^{\mathfrak{b}} \mathfrak{d} \dot{\cap}^{\subset}$

ℓ<⊂<sup>b</sup>◁▷<sup>q<sub>b</sub></sup>⊃▷σ<sup>a<sub>ℓ</sub></sup>ℓ



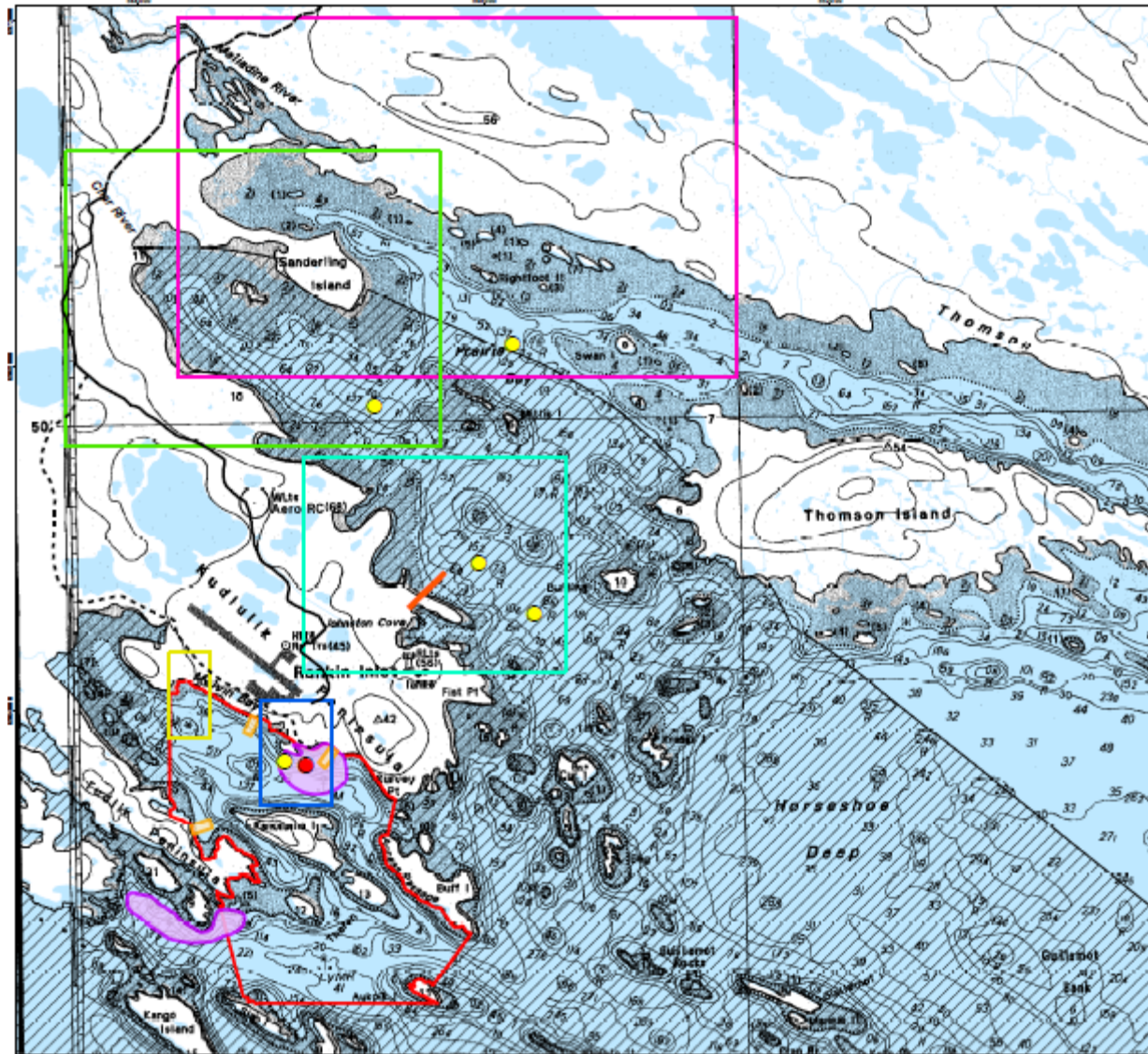




Сн▷⁴Г▷СΔᶜ ◁◁⁹н⁹л





















## AGNICO EAGLE



- [illegible]

**LEGEND**

|                                                                                       |                                                                                               |                                                                                       |                                                         |
|---------------------------------------------------------------------------------------|-----------------------------------------------------------------------------------------------|---------------------------------------------------------------------------------------|---------------------------------------------------------|
|  | BASLINE SAMPLING AREA - 2011                                                                  |  | ALL-WEATHER ACCESS ROAD (AWAR)                          |
|  | BASLINE SAMPLING AREA - 2018                                                                  |  | BYPASS ROAD                                             |
|  | MARINE LOCAL STUDY AREA - 2018                                                                |  | EXISTING ROAD                                           |
|  | MARINE REGIONAL STUDY AREA                                                                    |  | BATHYMETRIC DEPTH CONTOUR                               |
|  | DISCHARGE 1 - POTENTIAL DISCHARGE LOCATION INTO MELVIN BAY (OFF ITIVIA FUEL STORAGE FACILITY) |  | WATERCOURSE                                             |
|  | DISCHARGE 2 - POTENTIAL DISCHARGE LOCATION INTO MELVIN BAY (OFF BYPASS ROAD)                  |  | WATERBODY                                               |
|  | DISCHARGE 3 - POTENTIAL DISCHARGE LOCATION INTO HUDSON BAY (OFF CHAR RIVER BRIDGE)            |  | PROPOSED DIFFUSER LOCATION                              |
|  | DISCHARGE 4 - INTO PRAIRIE BAY (OFF JOHNSTON COVE)                                            |  | APPROVED DIFFUSER LOCATION (CURRENT)                    |
|  | DISCHARGE 5 - INTO PRAIRIE BAY (OFF MELIADINE RIVER)                                          |  | RANKIN INLET SEWAGE OUTFALL PIPE (APPROXIMATE LOCATION) |





የኤምዲሮጋርጋሲና የኤምዲሲስታንሲ

# ርስዎ ለፍጥ ልማት ይገባል



በሰሌዳ 1. የፍጥ ልማት ለፍጥ ልማት የሚያስፈልጉት (የፍጥ ልማት የሚያስፈልጉት የፍጥ ልማት)

| ዓመት  | ልማት የሚያስፈልጉት (m³) | በፍጥ ልማት ለፍጥ ልማት ለፍጥ ልማት (m³/ዓመት) |
|------|-------------------|----------------------------------|
| 2020 | 187,245           | 1,600                            |
| 2021 | 333,953           | 1,600                            |
| 2022 | 503,806           | 11,630                           |
| 2023 | 277,768           | 11,515                           |
| 2024 | 47,688            | 7,444                            |
| 2025 | 0                 | 7,987                            |
| 2026 | 0                 | 8,159                            |
| 2027 | 0                 | 7,729                            |

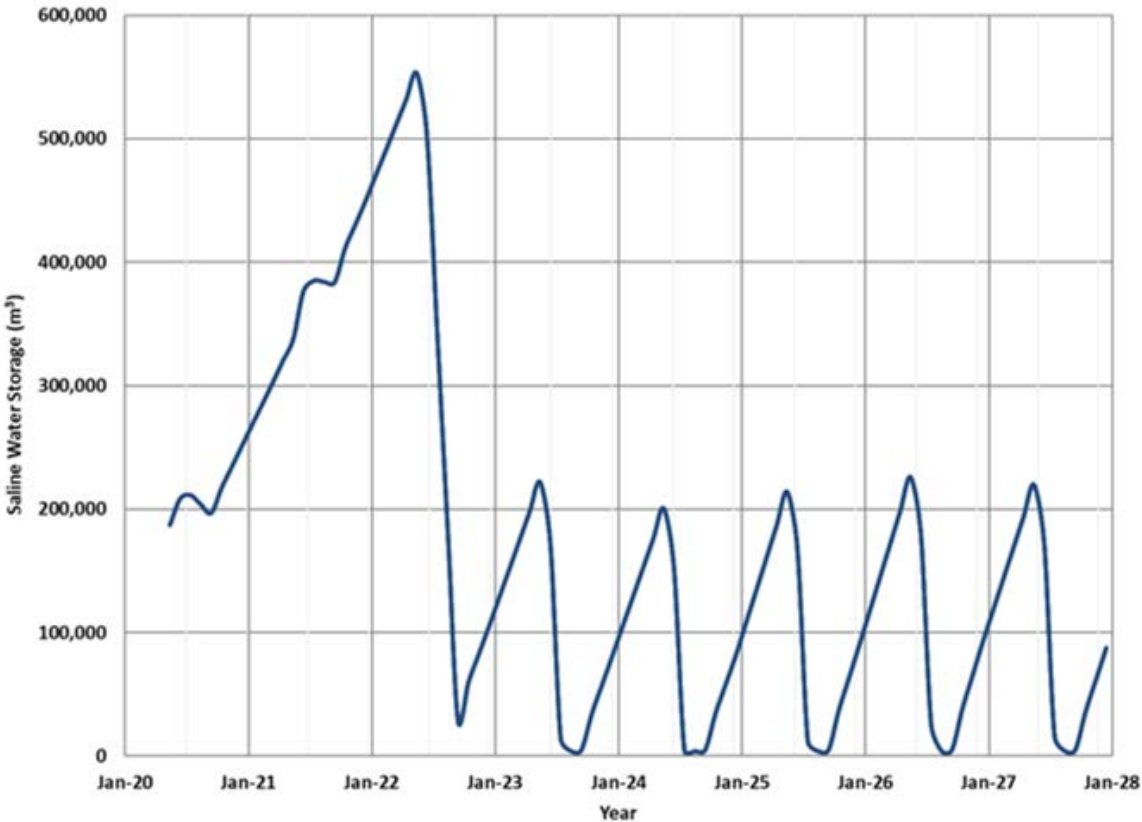
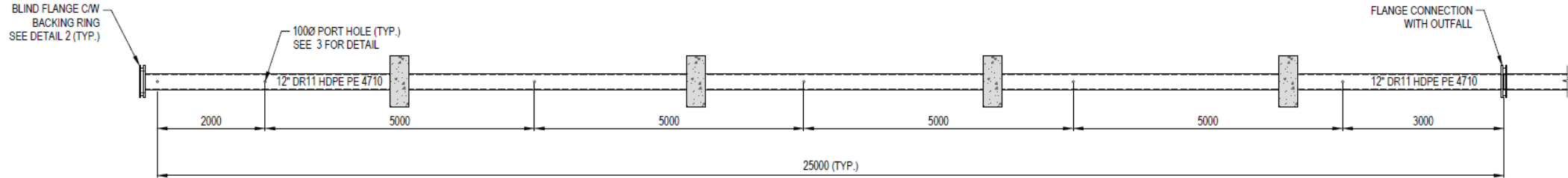


Figure 1: Accumulated Saline Water Storage on Site (Average Year Scenario)

# ΔΟΧΕΤΗΡΙΑΚΟ ΣΥΣΤΗΜΑ

## ΣΥΣΤΗΜΑ ΔΕΧΣΗΣ 5-ΣΤΑΔΙΑΚΗΣ ΔΙΑΔΟΧΙΚΗΣ

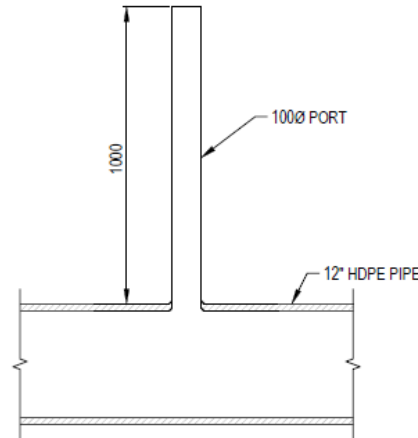
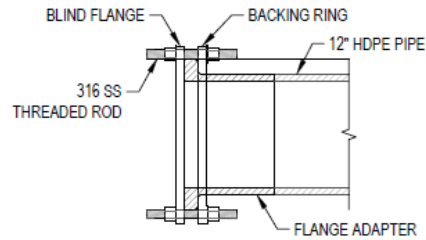
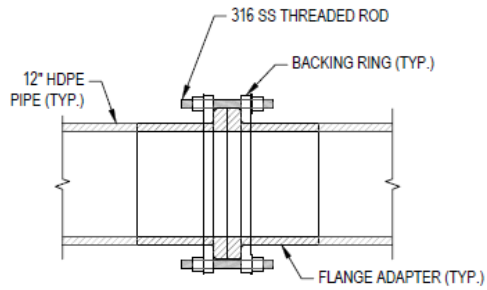


**PLAN**  
SCALE: 1:75

| 12" DR11 HDPE PE 4710 |        |
|-----------------------|--------|
| O.D.                  | I.D.   |
| 305 mm                | 261 mm |

**NOTE:**

1. DEPENDING ON THE MANUFACTURER, THE PIPE DIAMETER AND WALL THICKNESS MAY VARY SLIGHTLY. CONTRACTOR TO CONFIRM AND COORDINATE SUPPLY AND INSTALLATION. CONTRACTOR TO PROVIDE SHOP DRAWINGS AND SPECIFICATIONS FOR APPROVAL PRIOR TO ORDERING MATERIAL.
- 2.



**1 FLANGE ADAPTER CONNECTION DETAIL**  
SCALE: 1:20

**2 END DIFFUSER DETAIL**  
SCALE: 1:20

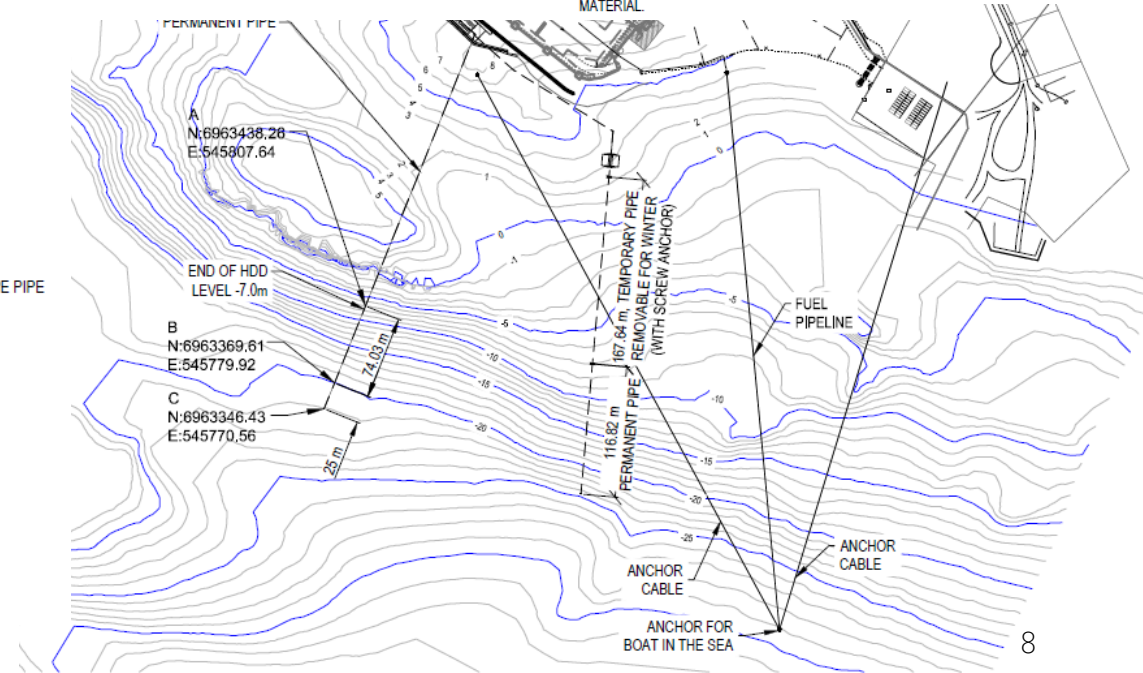
**3 TYPICAL PORT VIEW**  
SCALE: 1:20

**NOTE:**

1. SACRIFICIAL MAGNESIUM ANODE SHALL BE INSTALLED ON EACH BACKING RING ON ONE OF THE RODS.

**NOTE:**

1. SACRIFICIAL MAGNESIUM ANODE SHALL BE INSTALLED ON EACH BACKING RING ON ONE OF THE RODS.





ᠬᠤᠰᠤᠵᠢᠴᠢᠨᠠᠳᠠᠳᠤᠰᠤᠵᠢᠴᠢᠨ (HDD)



- [illegible]



ᐱᓃᑕᐅᓂᓴᓂᑦ/ᐅᑎᓃᑎᑎᑎᓂᓴᑭᑦ <ᓴᓇᐅᑎ



- $$\triangleleft^b \dot{\sigma}^b d^b d^c \mid C \Gamma^c \triangleleft^c \Gamma^c C \triangleleft^c \Gamma^c d \Delta^c \Gamma^b d \Delta \cap C \triangleleft^c \Gamma^b$$





ՎԵՐՈՒՄԻՆՆԵՐ ?