

MELIADINE PROJECT SALINE EFFLUENT DISCHARGE TO MARINE ENVIRONMENT



SOCIO-ECONOMIC ENVIRONMENT

AGENDA



- Traditional land and resource use
- Employment and procurement
- Questions

TRADITIONAL LAND AND RESOURCE USE



TRADITIONAL LAND AND RESOURCE USE - AWAR



- A key minor pathway identified pertains to Traditional Land Use activities and access and berry picking along the AWAR
 - The overall effect from the Project on the use of vegetation resources is expected to be within the range of baseline conditions
- Feedback from consultations reiterate the importance of crossings along the waterline for ATVs and snowmobiles
 - Covering the waterline will support traditional use along the AWAR
- The waterline will be covered by the same material as the AWAR and will be of lower profile than the AWAR
 - Inuit will be able to cross the waterlines the same way that they currently cross the AWAR
 - Safer for snowmobiles and ATVs to cross
 - Easier to cross for caribou and other wildlife

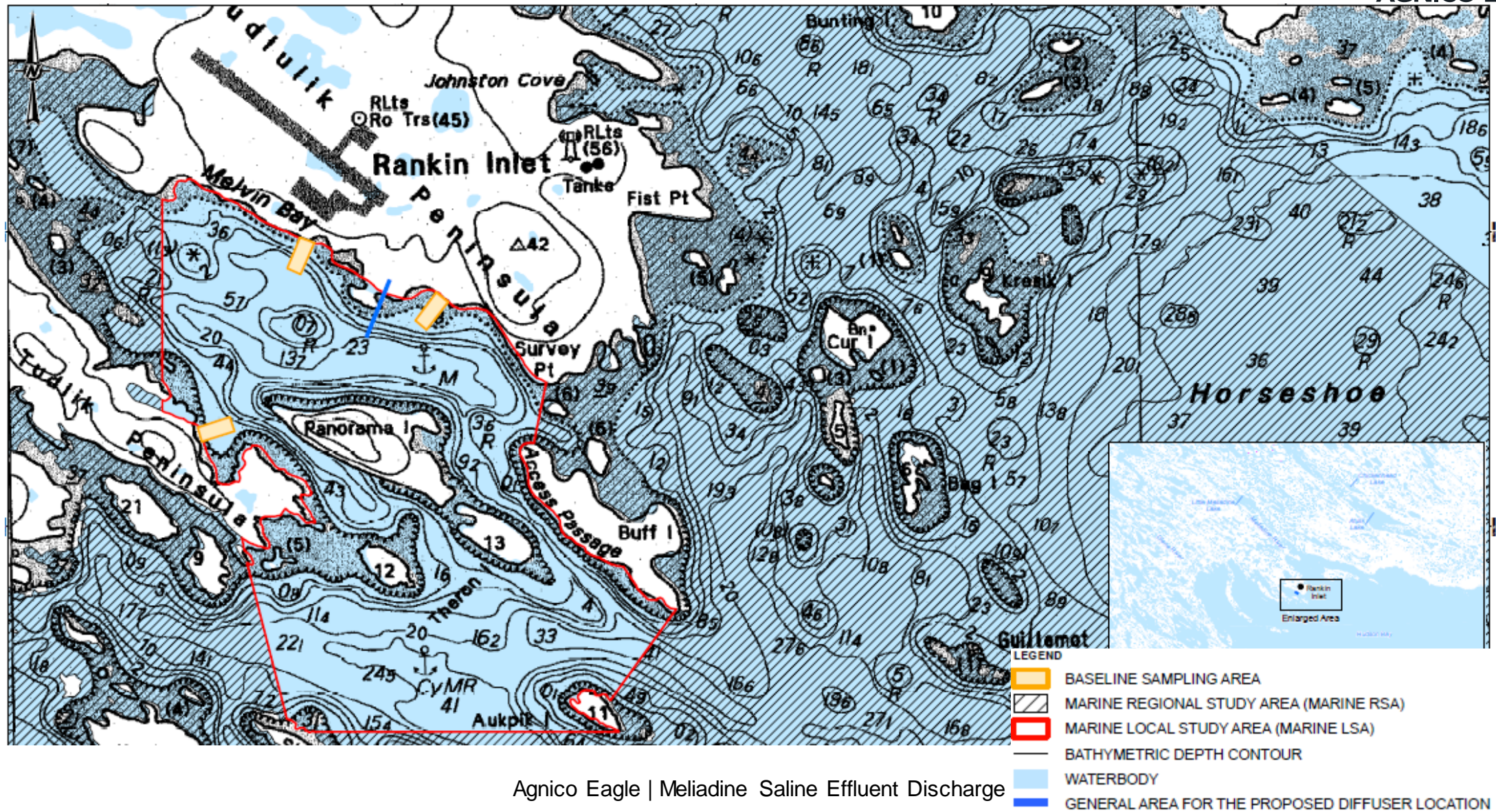
TRADITIONAL LAND AND RESOURCE USE – MELVIN BAY



- Seasonal discharge was selected as the approach to make sure that ice cover in Melvin Bay is not impacted, and non-traditional and traditional land use can continue
 - The area in the vicinity of the pipe infrastructure is currently used for snowmobile races and will continue to be unimpeded
- No effect has been identified that could result in potential impacts to marine wildlife and fish behaviour or health
 - With effective implementation of mitigation, effects on traditional harvesting of these species are expected to be minor

SUMMARY OF THE ENVIRONMENTAL AND SOCIO-ECONOMIC ASSESSMENT

MARINE ENVIRONMENT – STUDY AREAS



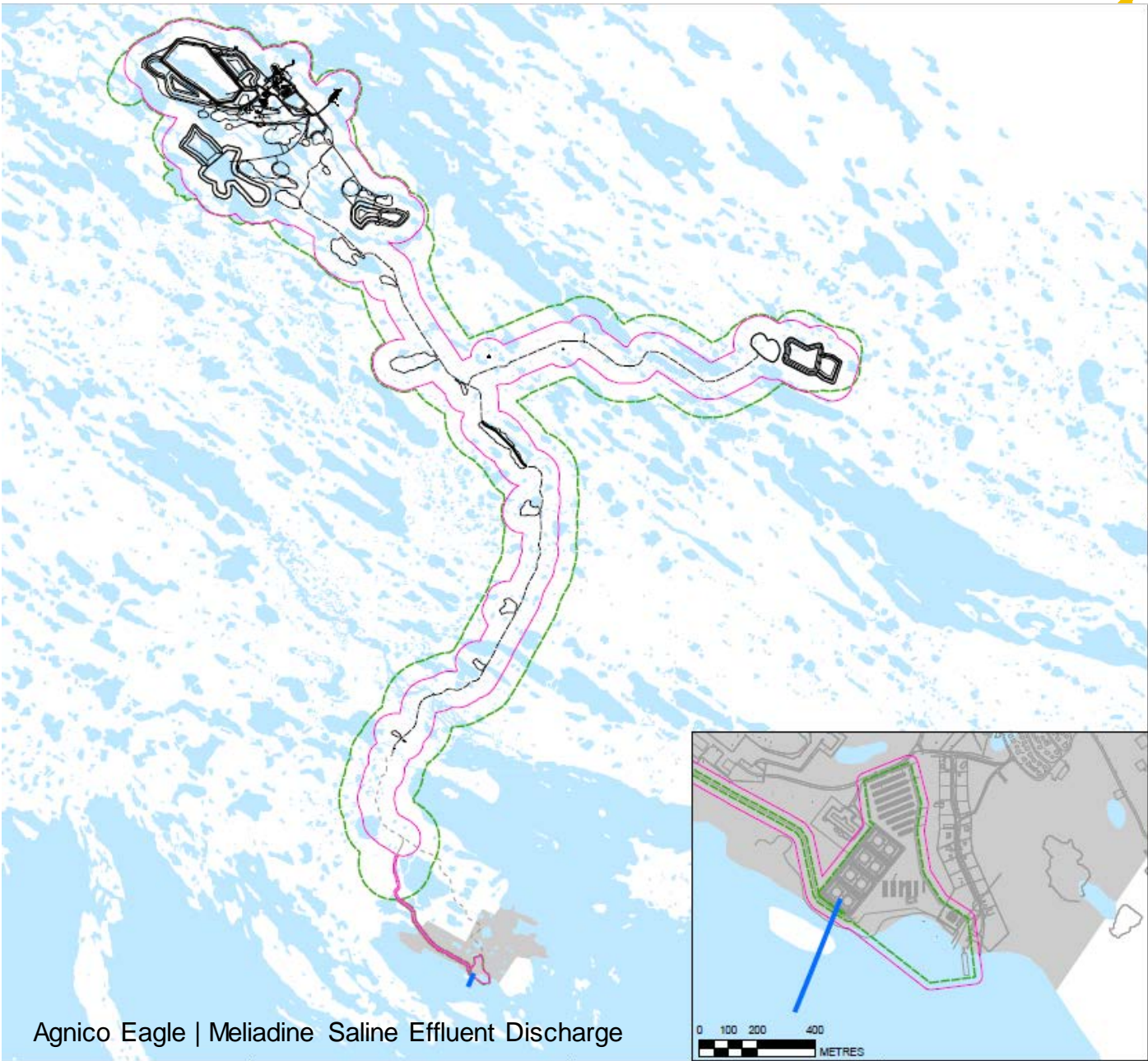
SUMMARY OF THE ENVIRONMENTAL AND SOCIO-ECONOMIC ASSESSMENT

TERRESTRIAL AND HERITAGE RESOURCES - LOCAL STUDY AREAS



AGLE

- LEGEND**
- MUNICIPAL BOUNDARY
 - WATERBODY
 - WATERCOURSE
 - LOCAL STUDY AREA - TERRESTRIAL
 - LOCAL STUDY AREA - HERITAGE RESOURCES
 - ALL-WEATHER ACCESS ROAD (AWAR)
 - PROPOSED PROJECT INFRASTRUCTURE
 - ROAD - NEW
 - ROAD - EXISTING
 - GENERAL AREA FOR THE PROPOSED DIFFUSER LOCATION



Agnico Eagle | Meliadine Saline Effluent Discharge

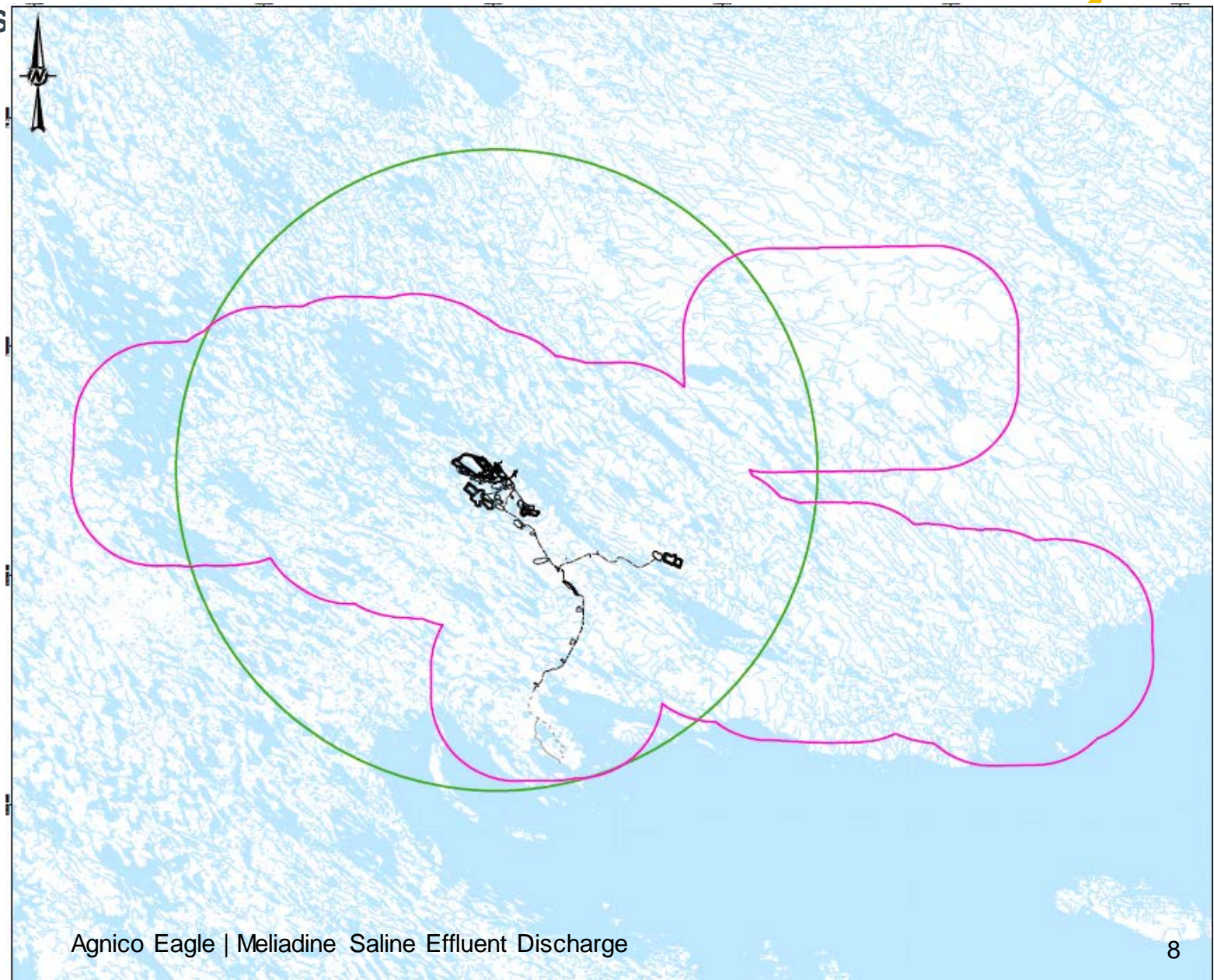
SUMMARY OF THE ENVIRONMENTAL AND SOCIO-ECONOMIC ASSESSMENT

TERRESTRIAL AND HERITAGE RESOURCES

REGIONAL STUDY AREAS



- LEGEND
- HERITAGE REGIONAL STUDY AREA
 - TERRESTRIAL REGIONAL STUDY AREA
 - ALL-WEATHER ACCESS ROAD (AWAR)
 - ROAD - NEW
 - ROAD - EXISTING
 - PROPOSED PROJECT INFRASTRUCTURE
 - WASTE ROCK STORAGE FACILITY
 - BORROW PIT/QUARRY
 - WATERCOURSE
 - WATERBODY



EMPLOYMENT AND PROCUREMENT



EMPLOYMENT AND PROCUREMENT



- The total workforce required for the waterline would be approximately 35 direct/indirect workers during construction.
- The target for Inuit employment is 10 to 14 (30%) of those workers to be hired from NTI firms to work on the waterline construction.
- Agnico Eagle will enforce working procedures that are in place to respect our COVID “No Contact” protocol.
- The Agnico Eagle Nunavumiutt employees, currently on temporary layoff, will be available to be contracted by the NTI firms for construction of the waterlines.

QUESTIONS ?

