



**Parcs  
Canada**

# Canada

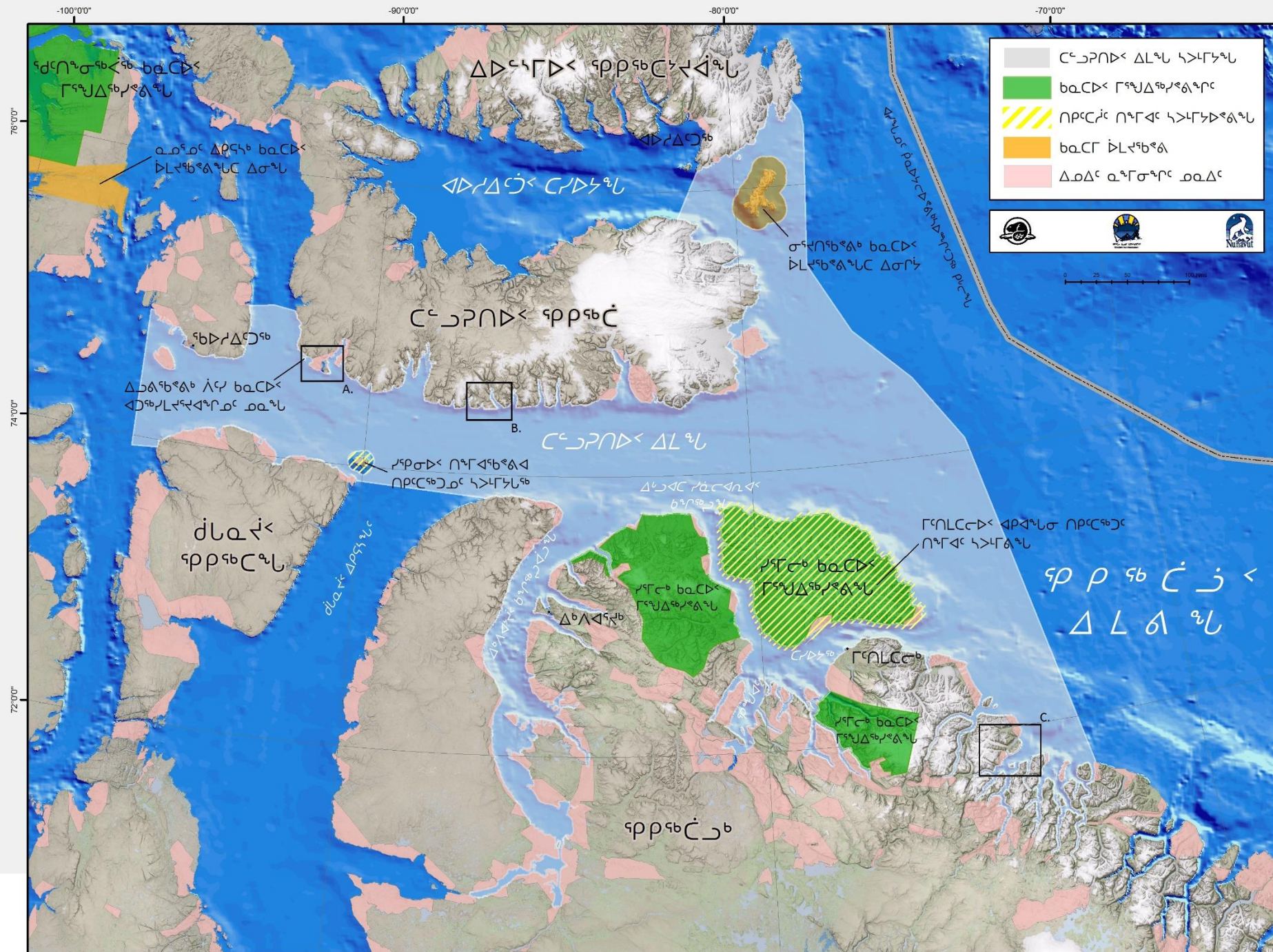
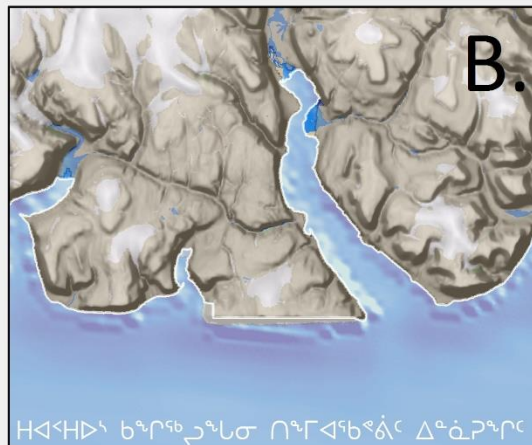
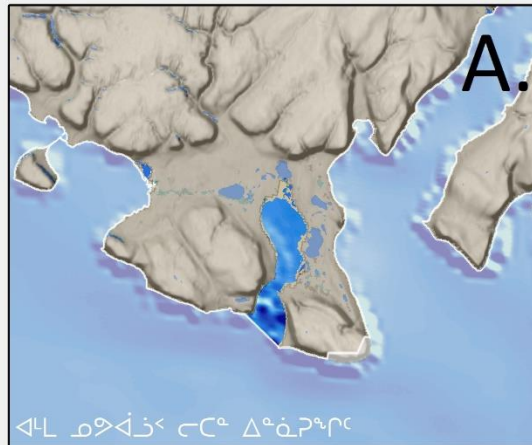
$\sigma^c \leftarrow \text{PL}(\sigma^c) \wedge \sigma^c \neq \rho^b d\sigma^b \quad \sigma^b \leftarrow \sigma^b \cap \sigma^c$

ከጥቅምት 25 - እስከ ነሐሴ 6, 2021





# ርዕሰ ጉዞ ለግሪክ ቤተሰብ ርዕሰ ጉዞ ለግሪክ ቤተሰብ ርዕሰ ጉዞ ለግሪክ ቤተሰብ





[illegible]

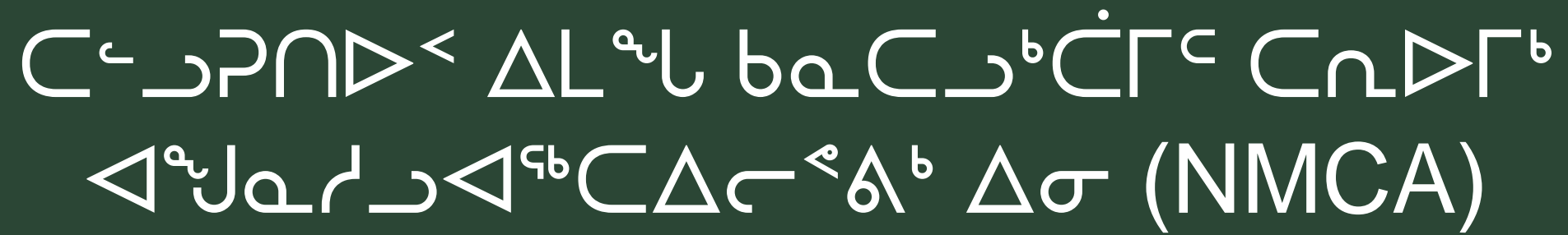
[illegible][illegible]

- $\mathcal{M}^{\mathcal{C}} \rightarrow \mathcal{M}^{\mathcal{C}} \xrightarrow{\sigma} \mathcal{M}^{\mathcal{C}} \xrightarrow{\sigma} \mathcal{M}^{\mathcal{C}}$ ,
- $\Delta \mathcal{M}^{\mathcal{C}} \xrightarrow{\sigma} \mathcal{M}^{\mathcal{C}} \xrightarrow{\sigma} \mathcal{M}^{\mathcal{C}} \xrightarrow{\sigma} \mathcal{M}^{\mathcal{C}} \xrightarrow{\sigma} \mathcal{M}^{\mathcal{C}}$   
 $\mathcal{M}^{\mathcal{C}} \xrightarrow{\sigma} \mathcal{M}^{\mathcal{C}} \xrightarrow{\sigma} \mathcal{M}^{\mathcal{C}} \xrightarrow{\sigma} \mathcal{M}^{\mathcal{C}} \xrightarrow{\sigma} \mathcal{M}^{\mathcal{C}}$   
 $\mathcal{M}^{\mathcal{C}} \xrightarrow{\sigma} \mathcal{M}^{\mathcal{C}} \xrightarrow{\sigma} \mathcal{M}^{\mathcal{C}} \xrightarrow{\sigma} \mathcal{M}^{\mathcal{C}} \xrightarrow{\sigma} \mathcal{M}^{\mathcal{C}}$   
 $\mathcal{M}^{\mathcal{C}} \xrightarrow{\sigma} \mathcal{M}^{\mathcal{C}} \xrightarrow{\sigma} \mathcal{M}^{\mathcal{C}} \xrightarrow{\sigma} \mathcal{M}^{\mathcal{C}} \xrightarrow{\sigma} \mathcal{M}^{\mathcal{C}}$
- $\mathcal{M}^{\mathcal{C}} \xrightarrow{\sigma} \mathcal{M}^{\mathcal{C}} \xrightarrow{\sigma} \mathcal{M}^{\mathcal{C}} \xrightarrow{\sigma} \mathcal{M}^{\mathcal{C}} \xrightarrow{\sigma} \mathcal{M}^{\mathcal{C}}$



[illegible]

- [illegible]



- 
- A photograph of three narwhals swimming in deep blue water. Their long, white, tusk-like appendages are clearly visible, extending from their heads. The water is a vibrant blue, and the narwhals' bodies are covered in white, textured fur.



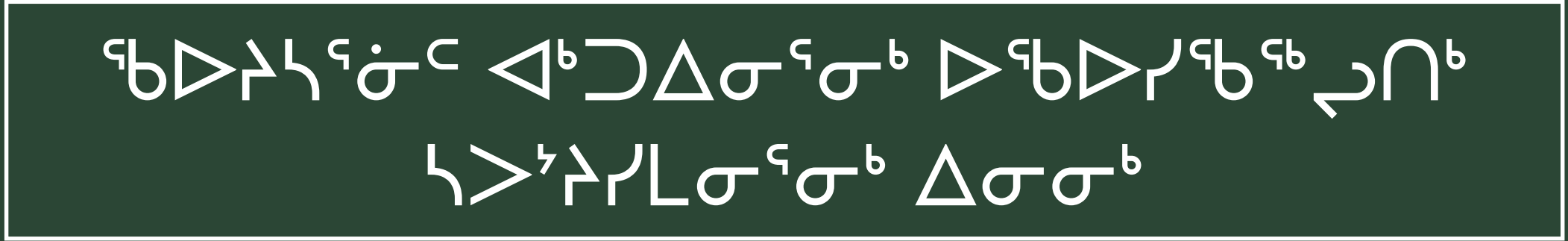
$C^{\epsilon} \supset \mathcal{P} \cap \Delta^{\epsilon} \quad \Delta L^{\epsilon} \text{ is } b_{\Delta} C^{\epsilon} \dot{C} \Gamma^{\epsilon} \quad C \cap \Delta \Gamma^{\epsilon} \quad \Delta^{\epsilon} J_{\Delta} \Gamma^{\epsilon} \Delta^{\epsilon} C \Delta \Gamma^{\epsilon} \Delta^{\epsilon} \Delta \sigma$

- [illegible]



- 3



[illegible]

C

[illegible]

- [illegible]



$\triangleleft \mathcal{D}^{\epsilon_b} \mathcal{N}^c \searrow \Gamma^c \triangleright \nabla^{\epsilon_b} \mathcal{H}^c \mathcal{K} \mathcal{O} \sigma^b \wedge^L L \mathcal{N} \triangleright \nwarrow \sigma^b$

- [illegible]



[illegible][illegible][illegible]



Δηλαδή:  $\triangleleft \triangleright \subset \sigma \triangleright \varphi^b \supset^c \triangleleft \dot{\varphi}^b \rho^b \gamma_L \uparrow^c CL^b d_m^a \ell \wedge \sigma n \uparrow^a \omega \triangleright \eta_m^c$   
 $\triangleleft^L L \cup \cup \triangleleft \supset^c \eta \subset \triangleright \sigma^a \uparrow^a \supset^c \Delta L^a \dot{\omega}^b \supset \dot{\eta}^c \uparrow^c \uparrow^c$   
 $\triangleleft \dot{\varphi}^b \rho \triangleleft \sigma^b \gamma_L^a \uparrow^c \supset^b$ .



፲፭፻፳፯ ዓ.ም. ለጥቅምት ፳፯ ቀን ፳፻፲፭ ዓ.ም. 2

- ፖሊሲዎችን ለማረጋገጥ የሚያስችሉ የሥራ ስልጣኖች (MEWG) ለሚገኙት የሥራ ስልጣኖች ምክር ቤቶች ማረጋገጫ ማድረግ
- የሥራ ስልጣኖችን ለማረጋገጥ የሚያስችሉ የሥራ ስልጣኖች ምክር ቤቶች ማረጋገጫ ማድረግ
  - የሥራ ስልጣኖች ምክር ቤቶች (MEWG) ለሚገኙት የሥራ ስልጣኖች ምክር ቤቶች ማረጋገጫ ማድረግ
  - የሥራ ስልጣኖች ምክር ቤቶች ማረጋገጫ ማድረግ



[illegible]

[illegible]

- [illegible]



$\Delta \rho \dot{L}$  ንበ:  $\triangleright \mathfrak{m}^{\mathfrak{b}} \rho \triangleleft^{\mathfrak{c}} \sigma^{\mathfrak{a}} \rho^{\mathfrak{c}} \wedge \mathfrak{c} \mathfrak{n} \triangleleft \Gamma^{\mathfrak{c}} \triangleright \Gamma \triangleleft^{\mathfrak{c}} \mathfrak{r} \triangleleft^{\mathfrak{b}} \mathfrak{d}^{\mathfrak{c}} \triangleright \mathfrak{r} \mathfrak{b}^{\mathfrak{b}} \mathfrak{C}^{\mathfrak{c}} \mathfrak{s}^{\mathfrak{c}},$   
 $\Delta \mathfrak{c} \triangleright^{\mathfrak{c}} \mathfrak{z} \mathfrak{n}^{\mathfrak{b}} \mathfrak{r} \mathfrak{d} \sigma^{\mathfrak{b}} \triangleleft^{\mathfrak{b}} \delta^{\mathfrak{b}} \mathfrak{n} \mathfrak{n}^{\mathfrak{b}} \mathfrak{c} \mathfrak{C}^{\mathfrak{c}} \sigma^{\mathfrak{a}} \rho^{\mathfrak{c}}, \mathfrak{C} \mathfrak{L} \mathfrak{z} \mathfrak{J}^{\mathfrak{a}} \mathfrak{L}$   
 $\triangleleft^{\mathfrak{a}} \rho^{\mathfrak{b}} \mathfrak{c} \mathfrak{r} \triangleleft \mathfrak{P} \mathfrak{L} \sigma^{\mathfrak{b}} 2 \triangleleft^{\mathfrak{a}} \rho^{\mathfrak{b}} \mathfrak{c} \mathfrak{r} \triangleleft \mathfrak{n}^{\mathfrak{a}} \mathfrak{L}^{\mathfrak{c}} \triangleleft^{\mathfrak{b}} \mathfrak{z} \Delta \sigma \triangleright \mathfrak{z} \Delta^{\mathfrak{a}} \mathfrak{a} \mathfrak{n} \triangleleft \mathfrak{c}^{\mathfrak{a}} \mathfrak{m}^{\mathfrak{c}}$   
 $\mathfrak{C} \mathfrak{n} \triangleright \Gamma^{\mathfrak{c}} > \Delta \mathfrak{r} \mathfrak{m}^{\mathfrak{c}}.$





፲፭፻፳፯ ዓ.ም. ለጥንታዊው የግብርና ጥገና ሚኒስቴር ለጥንታዊው የግብርና ጥገና ሚኒስቴር 4

- [illegible]



Λ<sup>c</sup><sub>2</sub>ΔC<sup>a</sup>r<sup>c</sup>

- [illegible]