



**Public Consultation, Inuit
 Qaujimanituqangit (IQ) and
 Alternatives Assessment**

**Δμርᐅᑦᑎᑦᑎᑦᑎᑦ ᐅᑦᑎᑦᑎᑦᑎᑦ,
 ΔμΔᑦ ᑦᑎᐅᑦᑎᑦᑎᑦᑎᑦ (IQ) ᐅᑦᑎᑦᑎᑦᑎᑦ
 ᐅᑦᑎᑦᑎᑦᑎᑦᑎᑦ ᑦᑎᐅᑦᑎᑦᑎᑦᑎᑦ**

.....

Phase 2 Proposal / ᐅᑦᑎᑦᑎᑦᑎᑦᑎᑦ ᐅᑦᑎᑦᑎᑦᑎᑦᑎᑦ ᐅᑦᑎᑦᑎᑦᑎᑦᑎᑦ

Public Hearing Iqaluit and Pond Inlet January 2021
 Δμርᐅᑦᑎᑦᑎᑦᑎᑦ ΔμΔᑦ ᐅᑦᑎᑦᑎᑦᑎᑦᑎᑦ ᐅᑦᑎᑦᑎᑦᑎᑦᑎᑦ 2021



www.baffinland.com

1



Presentation Overview
ᐅᑦᑎᑦᑎᑦᑎᑦ ᐅᑦᑎᑦᑎᑦᑎᑦᑎᑦ

- Public Consultation
 Δμርᐅᑦᑎᑦᑎᑦᑎᑦ ᐅᑦᑎᑦᑎᑦᑎᑦᑎᑦ
- Inuit Qaujimanituqangit (IQ)
 ΔμΔᑦ ᑦᑎᐅᑦᑎᑦᑎᑦᑎᑦ
- What We've Heard and How We Responded
 ᐅᑦᑎᑦᑎᑦᑎᑦᑎᑦᑎᑦ ᐅᑦᑎᑦᑎᑦᑎᑦᑎᑦ ᐅᑦᑎᑦᑎᑦᑎᑦᑎᑦ
- Alternatives Assessment
 ᐅᑦᑎᑦᑎᑦᑎᑦᑎᑦᑎᑦ ᑦᑎᐅᑦᑎᑦᑎᑦᑎᑦᑎᑦ
- Summary
 ᐅᑦᑎᑦᑎᑦᑎᑦᑎᑦ



www.baffinland.com

2

• • • • •



**Baffinland Public
Consultations and
Engagements (2015 - 2020)**
ᐸᐱᑭᑦᑎᐱᑦᑕ ᐸᐅᑭᑦᑎᐱᑦᑕ
ᐸᐱᑭᑦᑎᐱᑦᑕ ᐸᐅᑭᑦᑎᐱᑦᑕ
ᐸᐱᑭᑦᑎᐱᑦᑕ ᐸᐅᑭᑦᑎᐱᑦᑕ
(2015-ᑦᑕ 2020-ᑭᑦ)



Staying Connected During Covid-19

[illegible]

ಮೇಲ್ವಿಚಾರಣೆ-19

‘ବିଶ୍ୱାସୀ’

- Out of concerns for the health and safety of our employees and their communities, Baffinland sent Nunavummiut staff home on paid leave and suspended all travel plans to Nunavut in March 2020.





- [illegible]



www.baffinland.com

1

[illegible]

www.baffinland.com

1



Community Information Events

መደራረቢያ ጋዋህነት ማሳሰቢያ

Jan / ጥቅምት -20	Feb / ሐምሌ -20	Mar / ጥቅምት -20	Apr / ጥቅምት -20	May / ጥቅምት -20
Clyde River CAO and Mayor ከተማዋን ለመመረቅ ጥቅምት ሐምሌ ለልክ	Arctic Bay Deputy Mayor and CAO ፌዴራል ልማት ፌዴራል ጋዋህነት ማሳሰቢያ ጥቅምት	MHTO ፌዴራል ልማት ማህተም ከተማዋን ለመመረቅ	Harvesters Enabling Program- Hamlet of Pond Inlet ፌዴራል ልማት ማህተም ፌዴራል ጋዋህነት ማሳሰቢያ	MHTO ፌዴራል ልማት ማህተም ከተማዋን ለመመረቅ
Pond Inlet Hamlet Council and MHTO ፌዴራል ልማት ማህተም ፌዴራል ጋዋህነት ማሳሰቢያ		Covid-19, Food Relief Hamlets of Arctic Bay and Igloolik ፌዴራል ልማት ማህተም ፌዴራል ጋዋህነት ማሳሰቢያ		
EA Workshop #1 All North Baffin Community Hamlet's and HTO's ፌዴራል ልማት ማህተም ፌዴራል ጋዋህነት ማሳሰቢያ				



www.baffinland.com

9



Community Information Events

መደራረቢያ ጋዋህነት ማሳሰቢያ

Jul / ጥቅምት -20	Oct / ጥቅምት -20	Nov / ጥቅምት -20	Dec / ጥቅምት -20
2020 Pre-Shipping Season Meeting Hamlet of Pond Inlet and MHTO 2020 ፖስት-ሽፒንግ ሽብርብ ፌዴራል ልማት ማህተም ፌዴራል ጋዋህነት ማሳሰቢያ	Phase 2 Issues Resolution MHTO ፌዴራል ልማት ማህተም ፌዴራል ጋዋህነት ማሳሰቢያ	2019 Socio-Economic Monitoring Report engagement Mayors of Igloolik and Pond Inlet 2019-ፖስት-ሽፒንግ ሽብርብ ፌዴራል ልማት ማህተም ፌዴራል ጋዋህነት ማሳሰቢያ	Phase 2 Update and Project Benefits Hamlets and HTO of Arctic Bay, Igloolik, Sanirajak, Pond Inlet ፌዴራል ልማት ማህተም ፌዴራል ጋዋህነት ማሳሰቢያ
Engagement Forecast MHTO Technical Consultant ፌዴራል ልማት ማህተም ፌዴራል ጋዋህነት ማሳሰቢያ	Phase 2 Engagement Planning Hamlet of Pond Inlet and MHTO ፌዴራል ልማት ማህተም ፌዴራል ጋዋህነት ማሳሰቢያ	Phase 2 Update and Project Benefits Pond Inlet Hamlet and MHTO ፌዴራል ልማት ማህተም ፌዴራል ጋዋህነት ማሳሰቢያ	



www.baffinland.com

10

Feb / ᐱᕐᕈᐱᕐ - 20	May / ᐱᕐ - 20	Jun / ᐱᕐ -20	Jul / ᐱᕐ - 20	Aug / ᐱᕐ -20	Sep / ᐱᕐ -20
NIRB	MEWG, TEWG	MRSEMWG	NIRB	MHTO	Nunavut Tunngavik Inc. ᐱᕐᕈᐱᕐ ᐱᕐᕈᐱᕐ
MEWG		TEWG			NIRB Phase 2 Technical Meeting #3 ᐱᕐᕈᐱᕐ ᐱᕐᕈᐱᕐ ᐱᕐᕈᐱᕐ ᐱᕐᕈᐱᕐ ᐱᕐᕈᐱᕐ ᐱᕐᕈᐱᕐ ᐱᕐᕈᐱᕐ ᐱᕐᕈᐱᕐ ᐱᕐᕈᐱᕐ
TEWG		MEWG			NIRB Phase 2 Community Round Table and Pre Hearing Conference ᐱᕐᕈᐱᕐ ᐱᕐᕈᐱᕐ ᐱᕐᕈᐱᕐ ᐱᕐᕈᐱᕐ ᐱᕐᕈᐱᕐ ᐱᕐᕈᐱᕐ ᐱᕐᕈᐱᕐ ᐱᕐᕈᐱᕐ ᐱᕐᕈᐱᕐ
MRSEMWG					

Principles of Engagement

ለፋይናንስ ሚኒስቴር

Δεῦτε βράνουν σὺν ἡμῖν

- Inuit Certainty Agreement sets a new benchmark and places Inuit engagement at the the centre of the Project

ፈልጎት ሊሰጥባቸው ይችላል።

- Mutual desire to work together
ᐱᓴᓯᑦᑲᑎᓯᑦ/ᓯᒪᔭᓂᑦ ᐱᕋᓂᑦᑲᑎᓯᓄᑦ
- Active and frequent engagement is important
ᐱᕋᓂᐱᓄᐃᓄᓇᓂᑦ ᐱᔭᓂ ᐃᕋᐅᑦᑲᕋᐅᓴᐅᑦᑲᕋᐅᓄᑦ



ለፋይናንስ ሚኒስቴር

Δελφικό Παιχνίδι

- Communicate through various methods (meetings, open houses, Facebook, local radio, Baffinland Community Liaison Officers, VHF Radio)

[illegible]

- All communities are different. - Baffinland has committed to the development of community-specific engagement guidelines

ᐅᑕᓴᓯᓂᐁᓃᔭ ᓄᓇᑦᑕ ᐱᓗᓲᓴᓯᓴᓯᑦ. -ᑕᓶᓇᑦᑕᓄᑦ ᐱᓴᓯᓂᐁᓴᓴᑦ

[illegible]

Principles of Engagement

ለፋይናንስ ሚኒስቴር

Δ_{CD}⁵βC▷Π^CΠσ⁵σ^C

- Regular communication about how information has influenced Baffinland's processes and decisions

[illegible]

$\Delta_{\partial \Delta^c}$
የክልሉ ልዩነት

- [illegible]



Mary River Phase 2 Proposal

The business of sustainability



Baffinland

Mary River Phase 2 Proposal

Community Risk Assessment Workshops:
Draft Second Interim Report

11 March 2019
Project No.: 0499264-0004

The business of sustainability



19

Outcomes

ԿԳԽԲԾԸ

- On-the-ground evaluation of sites of importance

$$\frac{\partial \sigma}{\partial \sigma^b} = \frac{\partial \sigma}{\partial \sigma^b} \Delta \sigma^b$$

- Rail alignment discussion and evaluation

[illegible]

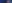
- Highlighted importance of continued monitoring of Project by Inuit

ፌዴራል ሚኒስቴር ለፍትሕና ሕግ
ፌዴራል ሚኒስቴር ለፍትሕና ሕግ



TUSAQTAVUT FOR PHASE 2 APPLICATION OF THE MARY RIVER PROJECT

June 14, 2019



ᐱᑭᑭᑦᐱᑦ ᐱᑭᑦ ᐅᐱᑦ ᐅᐱᑦ ᐱᑭᑦ ᐱᑭᑦ
Qikiqtani Inuit Association

Tusaqtavut Reports

$\gamma \in C^{\infty}(\Sigma) \rightarrow \sigma \in b^0(\Sigma)$

QIA Tusaqtavut Reports are an important resource

[illegible]

- Under the Inuit Certainty Agreement, additional Tusaqtavut style studies are being carried out in all five North Baffin communities to support future monitoring program development.

20

Increased Inclusion of IQ

- [illegible]



IQ Management Framework

- Baffinland released a draft IQ Management Framework on September 16, 2019 that identifies procedures and guidance on:
 - ረዕረዳዊ ነጥቦችና በበረሃ ምክር ቤቶች ላይ ለሚደረግ ልማት ንግድ ማረጋገጫና ማስፈጸም ያለፈው ስራ ማረጋገጫ
 - ለፍጥነት ማረጋገጫና ለፍጥነት ማረጋገጫ ያለፈው ስራ ማረጋገጫ
 - ለፍጥነት ማረጋገጫና ለፍጥነት ማረጋገጫ ያለፈው ስራ ማረጋገጫ
- Roles and responsibilities of parties involved
 - ለፍጥነት ማረጋገጫና ለፍጥነት ማረጋገጫ ያለፈው ስራ ማረጋገጫ
- Processes and mechanisms through which IQ informs Project related decision-making
 - ለፍጥነት ማረጋገጫና ለፍጥነት ማረጋገጫ ያለፈው ስራ ማረጋገጫ



IQ Management Framework

$\Delta \sigma \Delta^C$ ኤልኒንጋኤርጽ
 ኤሊጽፍ ገረጽጽ

- [illegible]



Inuit Committee
ΔοΔ^c ነበረገናር ጃቦር

- Environmental information will flow from:
 - Nauttiguqtiit – from communities, skilled harvesters and land users
 - QIA on site monitor
 - Existing Baffinland funded programs by community members
- A new Project CRLU assessment will be done jointly with QIA
- Baffinland will fund a Baseline Country Food Study in Pond Inlet

Inuit Committee and Inuit Social Oversight Committee

[illegible]

- Community members will be involved through the Inuit Social Oversight Committee and Community Action Research Team will consider:

[illegible]

- Language preservation
፲፭፻፶፫ ሺህ ስድስት
- Access to country food
መኖርና መብት
ለ፳፻፱ ዓ.ም. ጥያቄ
- Supporting youth & elders
ልማትና አደጋ ምክንያት
ለ፳፻፱ ዓ.ም. ጥያቄ
- Quality of life
አዕምሮአዊ ጤና
- Housing
እርሳስ ቤት
- Income & cost of living
የሰው ኃይል እና የጸደቀ
ጠቅላላ ገቢ
- Education & training
የፎካል ጥያቄ እና
የፎካል ጥያቄ
- Mental health
የአእምሮአዊ ጤና



What We Heard and How We Responded

[illegible]

What We Heard and How We Responded

[illegible]

Sources of Input

ደሞክራሲያዊ ጋዜጠኝነት

- [illegible]

Outcomes

ከፍተኛ ምርጫ

- Project Description Changes
ᐱᑦᓂᕈᓴᓄᑦ ᐃᓗᐃᔭᓂᕈᓴᓄᑦ ᐃᕈᓴᓄᑦ
- Operating and Monitoring Commitments
ᐃᓗᓂᕈᓴᓄᑦ ᐃᕈᓴᓄᑦ ᓂᐃᕈᓴᓄᑦ ᐃᕈᓴᓄᑦ
ᐃᕈᓴᓄᑦ ᐃᕈᓴᓄᑦ
- Inuit Certainty Agreement
ᐃᓗᓂᕈᓴᓄᑦ ᐃᕈᓴᓄᑦ ᐃᕈᓴᓄᑦ

Key Environment and Socio-Economic Topics

ለዚህም ምክንያት የግብርናውን አጠቃላይ ስልጣን ያስተላለፉ

- [illegible]

Key Environment and Socio-Economic Topics

ለኒሮታዊ ልዩነቶች ለሚፈጸሙ ልዩ ልዩ ስራዎች ምሳሌዎች

- [illegible]

Key Environment and Socio-Economic Topics

[illegible]

- Community Benefits
 - Some community members feel they do not receive enough benefits from Project despite IIBA between QIA and Baffinland



Highlights - Project Description Changes

፲፭፻፳፱፻፳፱ - ለፍጥነት ለማድረግ የሚያስፈልጉትን ምርመራዎች ማድረግ

- Changed the route of the rail line to avoid a critical travel route
 4P7777777777777777 7777777777777777 7777777777777777 7777777777777777
 7777777777777777 7777777777777777 7777777777777777
- Changed the rail design to increase ability for caribou to cross
 4P7777777777777777 7777777777777777 7777777777777777 7777777777777777
 7777777777777777 7777777777777777 7777777777777777
- Committed to creating crossings for land users at identified locations along the rail line
 4P7777777777777777 7777777777777777 7777777777777777 7777777777777777
 7777777777777777 7777777777777777 7777777777777777
- Design of the rail project decreases dust
 4P7777777777777777 7777777777777777 7777777777777777 7777777777777777
 7777777777777777 7777777777777777 7777777777777777

Highlights - Project Description Changes

[illegible]

- Developed stringent shipping restrictions when ice is present
ፈረንሳይያዊ ጥቅምተኛዎች ለፍራንሰስ ዲፕላማሲ ባለቤትነት የሚገኝ ስልጣን
- Install acoustic monitoring devices at the floe edge
የፍራንሰስ ዲፕላማሲ በፍራንሰስ ዲፕላማሲ ስር
- Develop community specific engagement guidelines
ለፍራንሰስ ዲፕላማሲ ስር
- Integrate independent relevant community based monitoring into Phase 2 adaptive management planning
ለፍራንሰስ ዲፕላማሲ ስር

Inuit Certainty Agreement – Community Wellness and Benefits

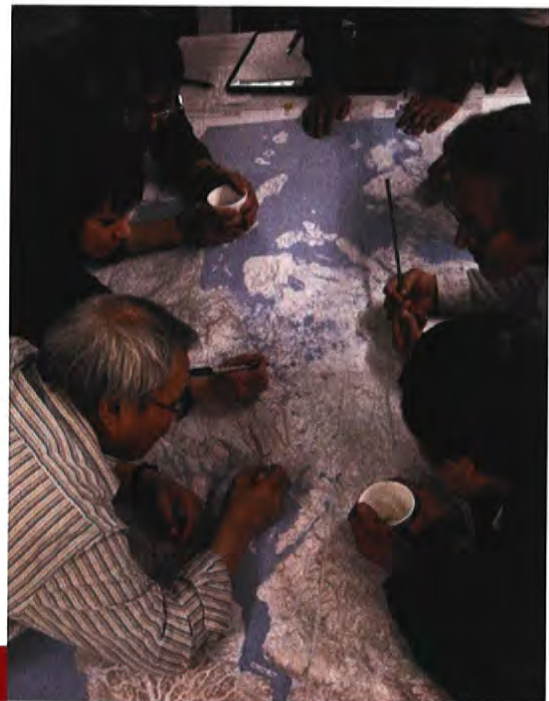
ልዑቅ ልብረቶችን ለሰጠው ልዑቅ ልብረቶች
 - ወደብ ልዑቅ ልብረቶች ለሰጠው ልዑቅ ልብረቶች

- [illegible]

Inuit Certainty Agreement – Inuit Stewardship

[illegible]

- [illegible]



Inuit Certainty Agreement – Inuit Stewardship

ΔΔΔ^ε ΔΔΔΔΔ^εΔΔΔΔΔ^εΔΔΔ^ε ΔΔΔ^εΔΔΔΔΔ^ε – ΔΔΔ^ε ΔΔΔΔΔ^εΔΔΔΔΔ^εΔΔΔΔΔ^ε

- Adaptive Management Plans Approval
ΔΔΔΔΔ^εΔΔΔΔΔ^εΔΔΔΔΔ^εΔΔΔ^ε ΔΔΔΔΔ^εΔΔΔΔΔ^ε ΔΔΔΔΔ^εΔΔΔΔΔ^ε
- Social Monitoring Framework
ΔΔΔΔΔ^εΔΔΔΔΔ^εΔΔΔΔΔ^εΔΔΔΔΔ^εΔΔΔΔΔ^εΔΔΔΔΔ^ε
- Culture, Resources and Land Use Monitoring
ΔΔΔΔΔ^εΔΔΔΔΔ^εΔΔΔΔΔ^εΔΔΔΔΔ^εΔΔΔΔΔ^εΔΔΔΔΔ^εΔΔΔΔΔ^εΔΔΔΔΔ^ε
- Wildlife Compensation
ΔΔΔΔΔ^εΔΔΔΔΔ^εΔΔΔΔΔ^εΔΔΔΔΔ^ε



Inuit Certainty Agreement – Inuit Stewardship

ΔΔΔ^ε ΔΔΔΔΔ^εΔΔΔΔΔ^εΔΔΔ^ε ΔΔΔ^εΔΔΔΔΔ^εΔΔΔΔΔ^ε – ΔΔΔ^ε ΔΔΔΔΔ^ε

- \$1.3 Million to the MHTO
\$1.3 ΔΔΔ ΔΔΔΔΔ^ε ΔΔΔΔΔ^εΔΔΔΔΔ^εΔΔΔΔΔ^ε
- \$750,000 Regional Harvester Enabling Program
\$750,000–ΔΔΔ ΔΔΔΔΔ^εΔΔΔΔΔ^εΔΔΔΔΔ^ε
- Pond Inlet Country Food Baseline Study
ΔΔΔΔΔ^εΔΔΔΔΔ^εΔΔΔ ΔΔΔ^ε ΔΔΔΔΔ^ε ΔΔΔΔΔ^εΔΔΔΔΔ^ε



ՀԴՅՆՈՒԹՅԱՆ
ԳԵՃԱԿ ԳԵՃԱԿՆԵՐՈՒՐԸ

-

Alternatives Assessment Approach

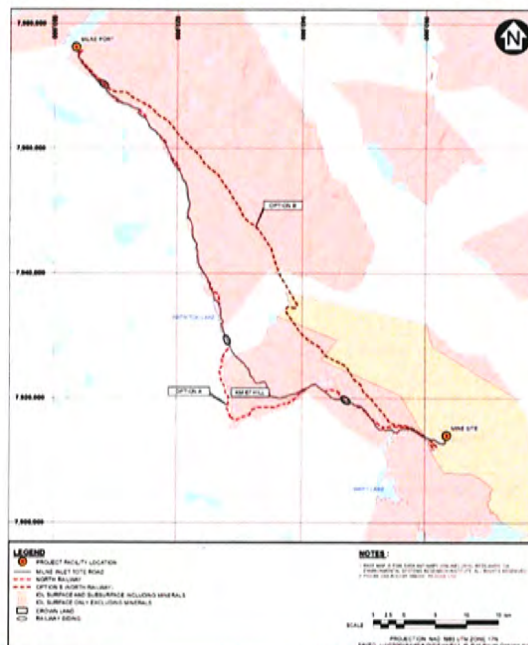
- Technical Feasibility
የሥራ ምርጫውን ማስተካከል
ለሚቻልበት ደረጃ መሆኑ
 - Whether or not a given alternative will achieve the required outcome
የሚፈለገውን ድምር በማሳደግ የሚችል መሆኑ
- Cost Effectiveness
የሥራ ምርጫውን ማስተካከል
በመቼት ላይ መሆኑ
 - The lifecycle costs of an alternative; in some instances the question is whether or not the alternative can be financially supported by the Project
የሥራ ምርጫውን ማስተካከል በሙሉ ለማስተካከል የሚያስፈልገውን ክፍያ ማሟላት

Alternatives Assessment Approach

- [illegible]

Rail Alignment Alternatives

- [illegible]



Rail Alignment Alternatives

- [illegible]



**ᐃᓄᐃ ᐃᑕᐅᔪᓐᑦ ᐱᑖᐅᑦ ᐃᓐᒃᐅᑦ ᐃᓐᒃᐅᑦ
- ᐃᓐᒃᐅᑦ 3**

- [illegible]



Shipping Route Management

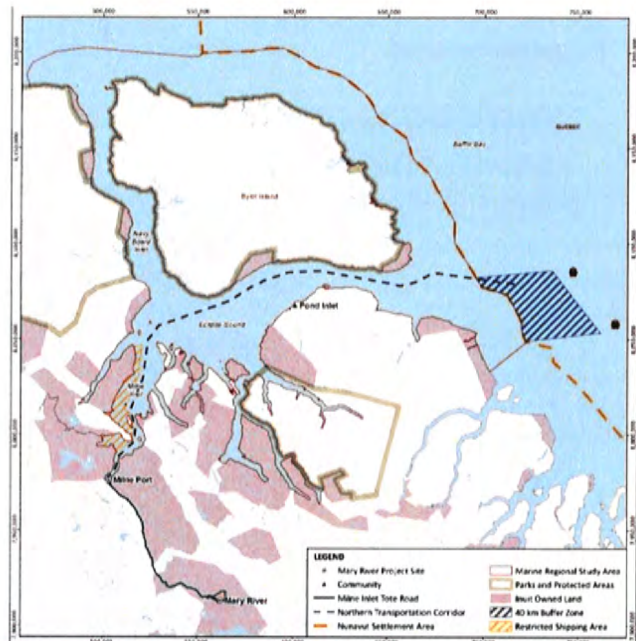
- All vessels are expected to:
 ԵՂՎԵՂԵԼԷ ՏՈՐՈՐԻՆԵԶԻ ԴԼԴՏԻՆԵՂՈՒ:
- Follow established Shipping Corridor through Eclipse Sound to Milne Port; no shipping through Navy Board or Northwest Passage
 ԼԵՆՆՈՒ ԴԻՍԹՈՒԼՆԵՂ ԵՂՎԵՂՎՈՅԸ
 ԵՐԵՆԵՐԴԵ ԴՆԴՈՒՑ ԵՐԴԻՆԵՂ
 ՎՊԱՅԸ ՉԵՆԵՐՔԵՆԴ; ԵՂՎԵՂՎՈՅԸ
 ԵՐԵՆԵՐԵՆԵՐԴՈՒ ԴՆԴԸ ԴՆԴՆԸ
 ԵՂՎԸ ՎՊՎՆԸ ԴԻՆՈՂՆԸ



Shipping Route Management

[illegible]

- All vessels are expected to:
ፈጥረዳርቲ ሙስናው
ለአካልነት:
- Avoid Koluktoo Bay and the western shoreline near Bruce Head
ድንበርባይ ነፃነት አልቀጠም
አልቀጠም ክፍተት
- Travel at 9 knots (15 km/hr) along the Shipping Corridor
የጉዞው ምዕራባዊ (15 ሰዓት ልዩነት)
ፈጥረዳርቲ ይገኛል ሆኖ



Restrictions on Shoulder Season Shipping

ԲԼԵՆԳՈՇԱՆԵՐԻ ՄԵԼՈՒՆԵՐԸ
 ԿԵՆՏՐՈՆԻԿԱԼ ԵՎ ԲԵՐԵՐԵՐԻ

- Vessels will not break landfast ice
ᐅᑦᓴᖃᖁᖅ ᑐᕋᖅᑎᖅ ᑭᓪᓰᑦᑎᓴᖅᑎᓪᓴᑦᑎᓪᓴᑦ
- Vessels stay outside of a 40km buffer zone from the Nunavut Settlement Area until shipping starts
ᐅᑦᓴᖃᖁᖅ ᑭᓪᓰᖅᑎᓪᓴᑦ 40km ᐅᓴᓴᑭᓪᓴᑦᑎᓪᓴᑦ ᓄᓇᕈᖅ
ᓄᓇᕋᖅᑎᓪᓴᑦᑎᓪᓴᑦ ᑭᓪᓰᖅᑎᓪᓴᑦ ᐅᑦᓴᖅᑎᓪᓴᑦᑎᓪᓴᑦ
ᐅᑦᓴᖅᑎᓪᓴᑦᑎᓪᓴᑦ
- Restricted transits in heavier ice conditions
ᑭᓪᓰᖅᑎᓪᓴᑦᑎᓪᓴᑦ ᕋᓪᓰᓄᓴᖅ ᐅᑦᓴᖅᑎᓪᓴᑦᑎᓪᓴᑦ ᑭᓪᓰᖅᑎᓪᓴᑦᑎᓪᓴᑦ



Restrictions on Shoulder Season Shipping

ᑭᓕᓕᓐᓂᓐ ᑭᓐᓂᓐ ᑭᓐᓂᓐ ᑭᓐᓂᓐ ᑭᓐᓂᓐ

4. Vessels always follow leads to avoid ice as a matter of safety
ᑭᓐᓂᓐ ᑭᓐᓂᓐ ᑭᓐᓂᓐ ᑭᓐᓂᓐ ᑭᓐᓂᓐ ᑭᓐᓂᓐ
5. Vessels generally travel slower when ice is present
ᑭᓐᓂᓐ ᑭᓐᓂᓐ ᑭᓐᓂᓐ ᑭᓐᓂᓐ ᑭᓐᓂᓐ



Summary ᑭᓐᓂᓐ ᑭᓐᓂᓐ ᑭᓐᓂᓐ

.....



Summary

- [illegible]

Summary

ᐃᔨᑦ ᓴᕈᒪᓂ፻ᑦ

- To ensure the ongoing and meaningful integration of IQ into the Project we have:
 - Developed an Inuit Qaujimaniutqangit Management Framework
 - Committed to the development of a Culture, Resources and Land Use monitoring program
 - Committed to the development of Inuit Committee and Inuit Social Oversight Committee
- Baffinland is committed to maintaining frequent engagement opportunities throughout the life of the Project

Summary

ᓇᐃᓐ ᓃᓅᓯᓚᓂᓯᓐ

- The Phase 2 Proposal is required for sustained economic viability of the Project / ᐅᓚᓚᓚᓃᓃᓚᓂᓯᓐ ᐱᓚᓚᓂᓯᓚᓂᓯᓐ ᐅᓂᓯᓚᓂᓯᓐ ᐱᓚᓚᓂᓯᓚᓂᓯᓐ ᐱᓚᓚᓂᓯᓚᓂᓯᓐ ᐱᓚᓚᓂᓯᓚᓂᓯᓐ
- The Phase 2 Proposal was developed through a substantive assessment of alternatives / ᓯᓂᓚᓂᓯᓐ ᐅᓚᓚᓚᓃᓃᓚᓂᓯᓐ ᐱᓚᓚᓂᓯᓚᓂᓯᓐ ᐅᓂᓯᓚᓂᓯᓐ ᐱᓚᓚᓂᓯᓚᓂᓯᓐ ᐱᓚᓚᓂᓯᓚᓂᓯᓐ ᐱᓚᓚᓂᓯᓚᓂᓯᓐ



Summary

ᓇᐃᓐ ᓃᓅᓯᓚᓂᓯᓐ

- Baffinland is committed to work with regulators and the communities to ensure the environmental effects of the Phase 2 Proposal are effectively managed / ᓚᓂᓚᓂᓯᓐ ᐱᓚᓚᓂᓯᓚᓂᓯᓐ ᐱᓚᓚᓂᓯᓚᓂᓯᓐ ᐱᓚᓚᓂᓯᓚᓂᓯᓐ ᐱᓚᓚᓂᓯᓚᓂᓯᓐ ᐱᓚᓚᓂᓯᓚᓂᓯᓐ





Thank You
ᓄᓯᓐᓇᓴᓐ

CORPORATE OFFICE

2275 Upper Middle Road East, Suite 300
Oakville, Ontario, Canada L6H 0C3
Tel: 1.416.364.8820

NORTHERN HEAD OFFICE

Building 622, Iqaluit House, Suite 102
Iqaluit, NU X0A 0H0



www.baffinland.com