



# Presentation Overview

▷  $\sigma^b b^c$   $\rightarrow$   $q \rightarrow q \Delta \gamma^b \gamma^c \rightarrow \sigma^a \rho^c$

- [illegible]





Δοκίμιο Γενικών Στοιχείων  
 Γενικών Στοιχείων  
 Γενικών Στοιχείων  
 Γενικών Στοιχείων

- Ongoing changes in Inuit culture identified  
ᐱᕈᓴᖅᑦᑦᑦᑦᑦᑦ ᐱᕈᓴᖅᑦᑦᑦᑦ ᐱᕈᓴᖅᑦᑦᑦᑦ  
ᐱᕈᓴᖅᑦᑦᑦᑦᑦᑦ
- Informed Baffinland's understanding of:  
ᐱᕈᓴᖅᑦᑦᑦᑦᑦᑦ ᐱᕈᓴᖅᑦᑦᑦᑦᑦᑦ  
ᐱᕈᓴᖅᑦᑦᑦᑦ:
- harvesting and land use patterns  
ᐱᕈᓴᖅᑦᑦᑦᑦ ᐱᕈᓴᖅᑦᑦᑦᑦ ᐱᕈᓴᖅᑦᑦᑦᑦᑦᑦᑦᑦᑦᑦᑦᑦ
- livelihoods and society  
ᐱᕈᓴᖅᑦᑦᑦᑦᑦᑦᑦᑦ ᐱᕈᓴᖅᑦᑦᑦᑦᑦᑦᑦᑦ





[illegible]

- 

'Kajjuqtikkut' Arctic Bay Working Group Meeting / 'ᑕᐱᓵᓴᓂᑦ ᐃᑦᐱᔭᓴᓂᑦ ᐱᑦᐱᔭᓴᓂᑦ ᑲᑎᑏᑦ ᐱᑦᐱᔭᓴᓂᑦ

ΔΑΥΙΔ ἡ ΓΕΝΕΣΙΣ τοῦ ΣΤΑΥΡΟΥ ΔΑΔΕ  
 ἡ ΒΕΛΛΕΣΤΙΑ

- 
- A group of people are seated around a long, dark wooden table in a dimly lit room, likely a conference room or meeting space. They are engaged in a meeting, with some looking at papers or laptops. In the background, a large projector screen displays a map of the United States. The room has dark wood paneling and a few framed pictures on the wall. The lighting is low, with the primary light source being the projector screen.

Community Workshop in Pond Inlet / ᓄᓇᐱᕐᑦ ᔨᑎᑏᑏᓂᓃᕐᑦ ᕐᑎᑏᓚᕐᑦ

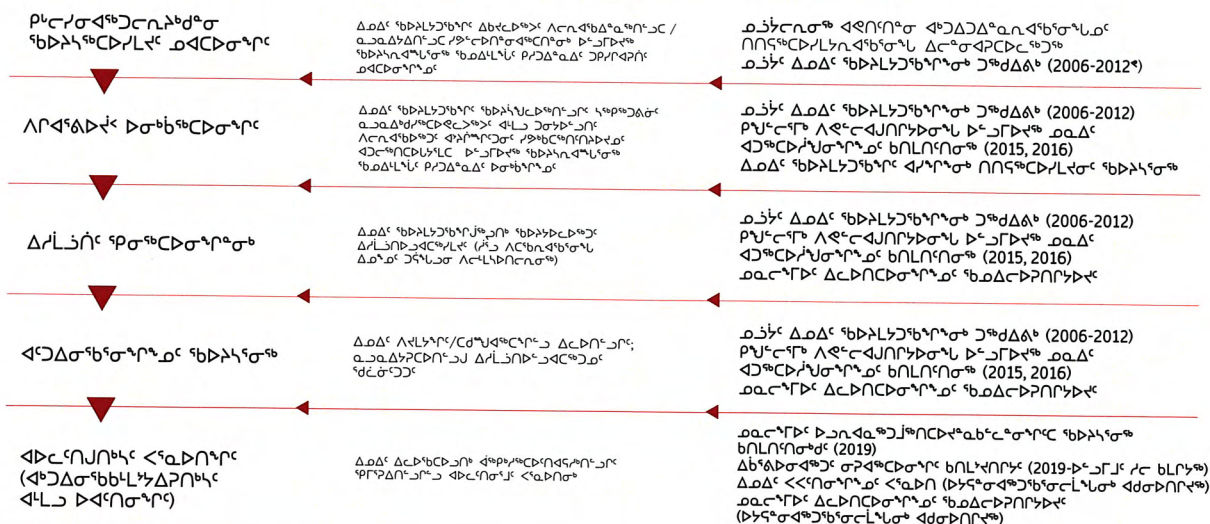
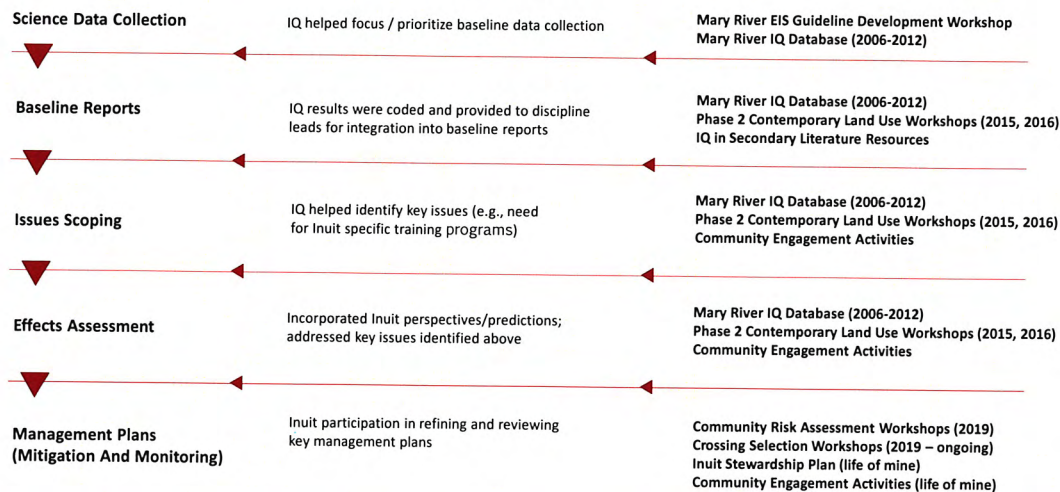


ደጋፊ ልንጥርጥር ሆናለሁ  
ጥንቃቄ ከሆነ ምንም ዓይነት

• • • • •

- [illegible]







## Study Area

### ክልልና ስፔሻል ሪገዮን

#### 1. Local Study Area

ወደብ ስፔሻል ሪገዮን

North Baffin / ንዋሽትን ስፔሻል ሪገዮን

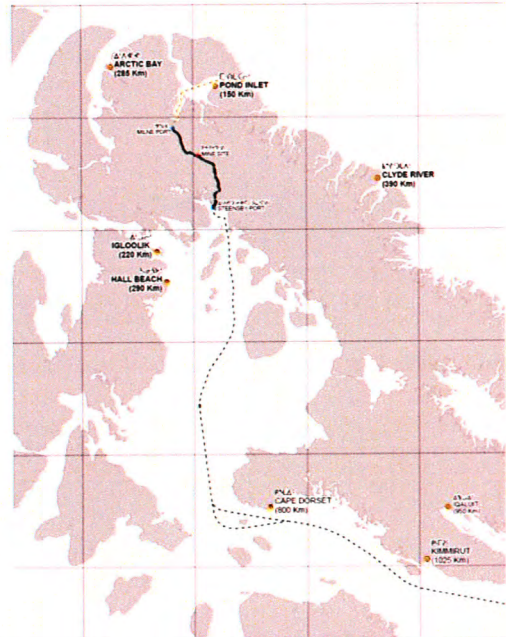
- Arctic Bay / ልክላባይ
- Clyde River / ክላይቪየር
- Sanirajak / ካሲንራጋክ
- Igloolik / ሲግሎቢክ
- Pond Inlet / ፖንድ ሲንሌት

• Iqaluit / ሲካሊት

#### 2. Regional Study Area

ብሔራዊ ስፔሻል ሪገዮን

- Nunavut / ኒኒታፍት



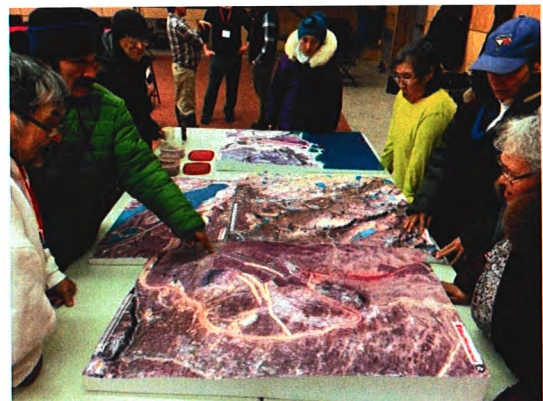
www.baffinland.com

11

## Research and Analysis

### ክልልና ስፔሻል ሪገዮን ስርዓት ምርምርና ልማት

- Community perspectives and Inuit knowledge  
ወደብ ስፔሻል ሪገዮን ስርዓት ምርምርና ልማት
- Community engagement (ongoing)  
ወደብ ስፔሻል ሪገዮን ስርዓት ምርምርና ልማት (ከፍተኛ ስርዓት ምርምርና ልማት)
- Interviews, workshops, and reports (2006 - 2010)  
ብሔራዊ ስፔሻል ሪገዮን ስርዓት ምርምርና ልማት (2006-2010)
- Community workshops (2015 - 2016)  
ወደብ ስፔሻል ሪገዮን ስርዓት ምርምርና ልማት (2015-2016)
- Risk assessment workshops (2019)  
ወደብ ስፔሻል ሪገዮን ስርዓት ምርምርና ልማት (2019)



www.baffinland.com

12





## Research and Analysis

ኖቢል ምዕራብ ምዕራብ ኢትዮጵያ

ፍፅዋላቸውን

- Tusaqtavut Study (2019)  
ጋኅኔር፡ኔ ናኔልኅኔር፡ኔ (2019)
- Existing research and studies  
ፊደ ላጋኔር፡ኔ ናኔልኅኅቦር ላፊጋ ልርኖኅር፡ኔ (2019)
- Project-specific studies  
ለርኅፊ፡ኔ-ጋኅኔር፡ኔ ናኔልኅ፡ኔ
- Community-based research (interviews and workshops)  
ወርኅ-ፊ፡ኔ ላፊ፡ኔ ናኔልኅኅቦር (ልፊ፡ኔ ላፊ፡ኔ ናኔልኅኅቦር ላፊጋ ልርኖ፡ኔ ላፊ፡ኔ ናኔልኅ፡ኔ)
- Worker Experience Report (2016)  
ካዲር ላፊ፡ኔ ላፊ፡ኔ ላፊ፡ኔ (2016)



[www.baffinland.com](http://www.baffinland.com)

13



## Research and Analysis

፳፻፲፱ ዓ.ም. ጥቅምት ፳፱

ፍፅላት ሲገኙ ለጥያቄው ማብረቅ ይችላሉ።

- Economic Impact Model (2018)  
የዓድነባህር ቅጥጥርና ልማት ምርመራ (2018)
- Labour Market Analysis (2018)  
ልማት ምርመራና ልማት ምርመራ  
ና ልማት ምርመራ (2018)
- Project monitoring results (2013 – Ongoing)  
ሰርዓተ ልማት ምርመራና ልማት ምርመራ (2013 –  
ከፍተኛ ልማት ምርመራ)



[www.baffinland.com](http://www.baffinland.com)

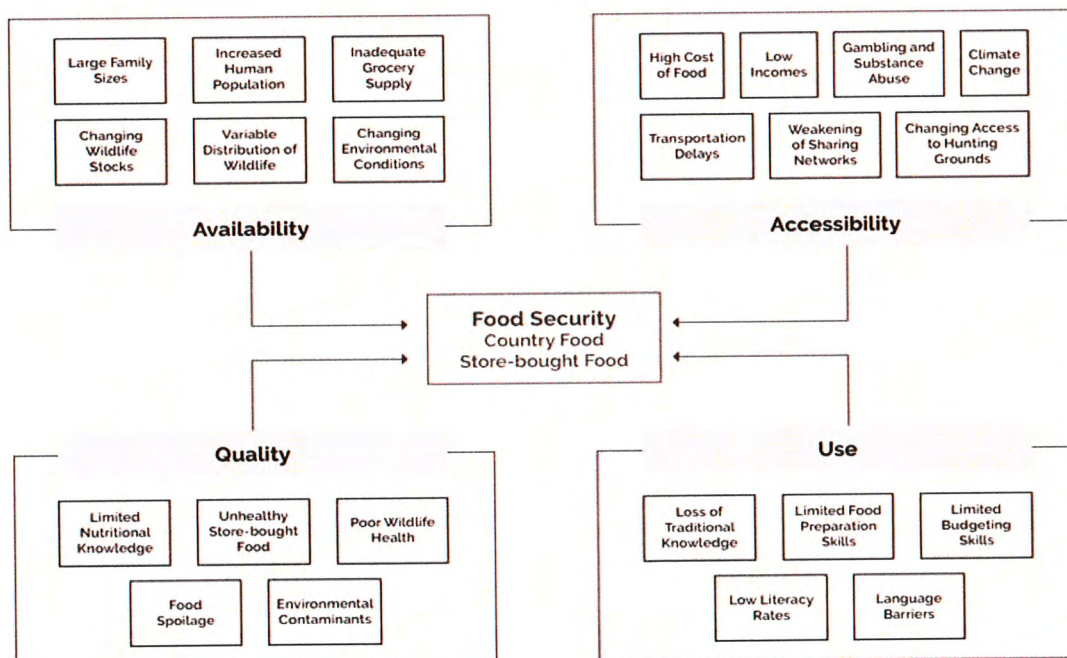
14



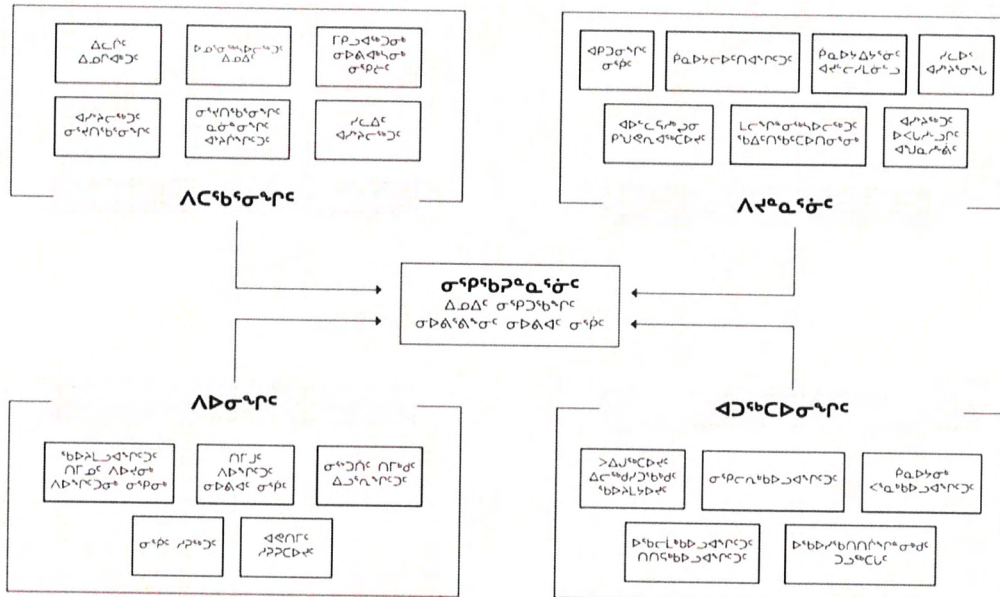
## Additional Assessment Information

ኖታዊና ኖታዊ ስብስብ  
ጋራ ስብስብ

- [illegible]







## Phase 2 Proposal ᐱᑕᖅᓴᖅᓂᖅ ᐱᖅᓴᖅᓴᖅᓴᖅᓴᖅ

### Socio Economic Interactions

- Phase 2 introduces:
  - economic stabilization of the Company, greater certainty of benefit delivery
  - additional capital expenditures (from construction), including additional contracting and employment/training opportunities
  - more rapid delivery of royalty payments to QIA and NTI, further enhanced by Inuit Certainty Agreement
  - new direct financial benefits and support programs for communities
- Phase 2 introduces new or modified interactions with Culture, Resources, and Land Use



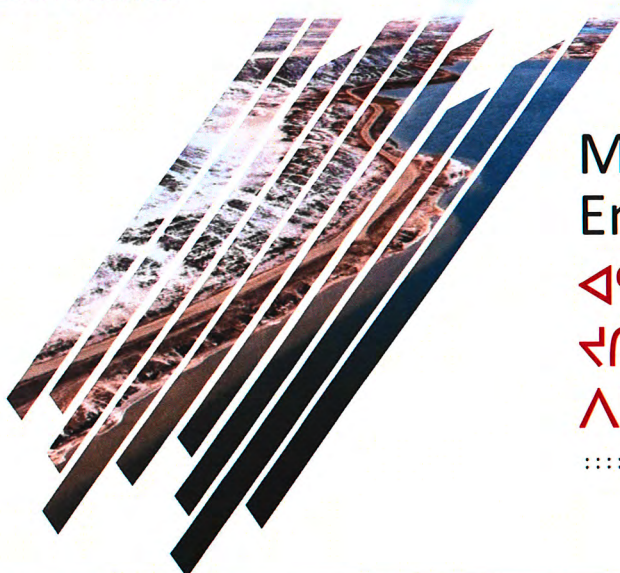


ᐃᑦᑕᑦᑕᑦ ᐱᑦᑕᑦᑕᑦᑕᑦᑕᑦ ᑦᑕᑦᑕᑦᑕᑦᑕᑦ

• ᐃᑦᑕᑦᑕᑦ ᐱᑦᑕᑦᑕᑦᑕᑦᑕᑦ ᑦᑕᑦᑕᑦᑕᑦ ᐃᑦᑕᑦᑕᑦ:

- ᑕᑦᑕᑦᑕᑦ ᐃᑦᑕᑦᑕᑦᑕᑦᑕᑦ ᐃᑦᑕᑦᑕᑦᑕᑦᑕᑦ, ᐃᑦᑕᑦᑕᑦᑕᑦᑕᑦᑕᑦᑕᑦ
- ᐃᑦᑕᑦᑕᑦ ᐃᑦᑕᑦᑕᑦᑕᑦᑕᑦᑕᑦ (ᑦᑕᑦᑕᑦᑕᑦ), ᐱᑦᑕᑦᑕᑦᑕᑦᑕᑦ ᑕᑦᑕᑦᑕᑦᑕᑦᑕᑦᑕᑦ
- ᐃᑦᑕᑦᑕᑦ ᐃᑦᑕᑦᑕᑦᑕᑦᑕᑦᑕᑦ ᐃᑦᑕᑦᑕᑦᑕᑦᑕᑦᑕᑦ ᐃᑦᑕᑦᑕᑦᑕᑦᑕᑦᑕᑦᑕᑦ
- ᐃᑦᑕᑦᑕᑦᑕᑦ ᐃᑦᑕᑦᑕᑦᑕᑦᑕᑦᑕᑦ ᐃᑦᑕᑦᑕᑦᑕᑦᑕᑦᑕᑦ ᐃᑦᑕᑦᑕᑦᑕᑦᑕᑦᑕᑦ

ᐃᑦᑕᑦᑕᑦ ᐱᑦᑕᑦᑕᑦᑕᑦᑕᑦ ᑦᑕᑦᑕᑦᑕᑦ ᐃᑦᑕᑦᑕᑦᑕᑦᑕᑦᑕᑦ ᐃᑦᑕᑦᑕᑦᑕᑦᑕᑦᑕᑦᑕᑦ ᐃᑦᑕᑦᑕᑦᑕᑦᑕᑦᑕᑦᑕᑦ ᐃᑦᑕᑦᑕᑦᑕᑦᑕᑦᑕᑦᑕᑦ



## Mitigation and Benefit Enhancement

ᐃᑦᑕᑦᑕᑦᑕᑦᑕᑦᑕᑦᑕᑦᑕᑦ  
ᑕᑦᑕᑦ ᐃᑦᑕᑦᑕᑦ  
ᐃᑦᑕᑦᑕᑦᑕᑦᑕᑦᑕᑦᑕᑦ

.....





## Inuit Employment at Mary River

ፈጠራ ልማትና ሥራ ፍጥነት  
ጥናትና ሥራ ፍጥነት

- Largest private sector employer in the Qikiqtani Region  
ᐱᓴᕈᑦ ᐅᓄᒃᑦ ᐸᓇᕋᕆᐣᕐᑦ ᐳᓄᐅᐤᐰᓂᓄᐢ
- Over 1.9 million hours of Project labour performed by Inuit to date  
ᐳᐵᐭᐩ ᐸᓄᓗᕈᑦ ᐸᓴᓚᐪᔨᔭ 1.9 ᕐᑦᐱᓄᐢ  
ᐸᓄᓛᐧᐩ ᐳᓄᐅᐤᐰᓂᓄᐢ
- Since 2014, Baffinland and its contractors have provided over \$76 million in payroll to Inuit  
2014-ᕐᑦᑲᓄᐢ ᐱᓴᕈᑦ ᐪᓄᐠᓄᐢ-ᐸᓄᐣᕐ  
ᐸᓄᓛᐧᐩᐣᓄᐢ \$75 ᕐᑦᐱᓄᐢ ᐸᓄᐤᐸᓄᐢ  
ᐼᐣᕐᕐᕐᐣᓄᐢ ᐳᐵᐭᐩ ᐸᓄᐤᐸᓄᐢ



[www.baffinland.com](http://www.baffinland.com)

21



## Inuit Employment at Mary River

**ፈዴራል ዲሞክራሲያዊ ሪፐብሊክ ኢትዮጵያ**

- Close to 100,000 hours of training completed by Inuit to date  
ΔΛ°α<Δ° 100,000 Δβ°ςσ° <δδσθσ°η°  
Α<ΛΛ°β°ς<Δ°η°<β°Δ° Δ·μ°·μ° β°<Δ°η° η°ρ°<Δ°
- Q-STEP training programs until 2021  
ς°ρ°ς°<σ° Α<ΛΛ°β°Δ°ς°η° Δ°σ°<δ°β°η°η°σ°η°<  
Δ°β°εαΔ°η°β°μ° εΔ°β°ς°β°η°η°Δ°η°β° Α<ΛΛ°β°η°η°β°ς° Α<ΛΛ°β°  
η°ρ°<Δ° 2021
- In 2021, \$1.5 million per year dedicated to Inuit training for the life of mine  
2021-η°η°<Δ°, \$1.5 Γ<Δ° ρ°Δ°η°< Δ°ς°η°η° η°ς°<β°<Δ°η°η°σ°  
Δ°μ°Δ° Α<ΛΛ°β°η°η°β°η°μ°·μ° β°η°ς°σ°<δ°β° <Δ°<σ°<λ°η°μ°  
<Δ°Δ°αΔ°λ°η°β°η°
- Over \$175,000 in Scholarships to 39 Inuit since 2014  
β°η°<σ°<Δ° \$175,000 Δ°σ°σ°<σ°η°η° ρ°Δ°η°< Δ°β°η°< 39-μ°  
Δ°μ°μ° Δ°σ°η°β°η°<β°Δ° 2014-Γ<σ°



[www.baffinland.com](http://www.baffinland.com)

22



[illegible]

- 
- Mary River Project Inuit Employment Trends**
- | Year | Quarter | Employment |
|------|---------|------------|
| 2017 | Q1      | 144        |
|      | Q2      | 229        |
|      | Q3      | 259        |
|      | Q4      | 244        |
| 2018 | Q1      | 241        |
|      | Q2      | 297        |
|      | Q3      | 357        |
|      | Q4      | 357        |
| 2019 | Q1      | 365        |
|      | Q2      | 383        |
|      | Q3      | 471        |
|      | Q4      | 441        |

$\Delta \rho \Delta^c \text{ } \rho^c \Gamma \sigma^c d \Pi^c b \rho^a \rho^c \sigma^c \Gamma^c$

-





### Projected Fiscal Benefits from the Project – Inuit Organizations

ዲረፕሮፍርፕሊደሮ ሩፍፓፓ ልክባካሮ ምክረፍፍፍ - ልወረ  
ከፓክሮባሮፍፍ

**Total (life of mine) revenues generated for NTI and QIA: \$2.0 billion**

[illegible]

- NTI Royalty: \$1.4 billion  
ᐃᓄᑦᑐᓪ ᑐᗕᓴᓴᐅᓪ ᐃᓪᓂᐅᔨᑎᓂᓴᓪᓂᐅᓂᐅ ᑐᓂᓴᐅᓂᓴᓴ: \$1.4 ᐃᓪᓸᓪᓇ ᐆᓇᐅᓴᓪ
- 30% - NTI  
30% - ᐃᓄᑦᑐᓪ ᑐᗕᓴᓴᐅ ᑎᒋᓴᓴᓂᐅ
- 10% - Regional Inuit Associations (each)  
10% - ᐃᓲᓪᓴᓪᓂᐈᓴᓪᓂᐅ ᐃᓂᐃᓪᓴ ᓂᑐᔭᓴᓂᑎᓱᓰᓱᓂᐅ (ᐃᑐᓂ)



[www.baffinland.com](http://www.baffinland.com)

25



### Projected Fiscal Benefits from the Project – Inuit Organizations

ዲረፕሮፍርፕሊዲኖች ለፍጥነት ለአጠቃላይ ምርምር - ለጥናት  
ከግሪፍቶች ጋር

- [illegible]



[www.baffinland.com](http://www.baffinland.com)

26



### Projected Fiscal Benefits from the Project

[illegible]

Nunavut / ᓄᓇᓂᓪ

- [illegible]

Canada / b2C

- Total (life of mine) revenues generated for the Government of Canada: \$1.7 billion  
ከብርሪያታዊ (ፔትሮሎልም ምንጭ) የፖርቱጋል ሚኒስቴር አስተዳደር በፖርቱጋል ዘመናዊነት: \$1.7 ሺህ ቢሽድ
- Total Gross Domestic Product (GDP) from Project: \$30.7 billion  
ከብርሪያታዊ ንግድ የፖርቱጋል ሚኒስቴር አስተዳደር: \$30.7 ሺህ ቢሽድ



[www.baffinland.com](http://www.baffinland.com)

27



## Variable QIA Income Streams

[illegible]

### Annual Quarry and Lease Payments

Annual Quantity and Lease Payments

- [illegible]



[www.baffinland.com](http://www.baffinland.com)

28



## Variable QIA Income Streams

43. Գործընկերության հարցերի լուծումը  
 44. Բնակավայրի անվտանգություն  
 45. Բնակավայրի անվտանգություն

## Water Compensation

ΔΓ<sup>ϵ</sup> J<sup>c</sup> ◁ P<sub>c</sub> ▷ ΠΓ<sup>ϵ</sup> Δ<sup>c</sup>

- \$255,000 in fixed annual payments plus additional payments for substantial effects



INUIT /  $\Delta\mu\Delta^c$

ANNUAL  
FINANCIAL  
OBLIGATIONS

- Ilagilitunut Fund - \$1.1 million / ለፍጥነትና ስራ ምርት - \$1.1 ሺህ ሺህ ስራ ምርት
- Business Capacity and Start Up Fund- \$275,000 / ለፍጥነትና ስራ ምርት ለፍጥነትና ስራ ምርት & ለፍጥነትና ስራ ምርት
- Inuit Training - \$1.5 million / ለፍጥነትና ስራ ምርት - \$1.5 ሺህ ሺህ ስራ ምርት
- Harvesters Enabling Fund - \$400,000 / ለፍጥነትና ስራ ምርት - \$400,000
- Wildlife Monitoring - \$200,000 / ለፍጥነትና ስራ ምርት - \$200,000
- Regional Harvester Enabling Fund - \$ 750,000 / ለፍጥነትና ስራ ምርት - \$ 750,000

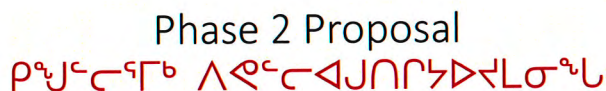
ONE TIME  
FINANCIAL  
OBLIGATIONS

- Phase 2 Milestone Payments - \$45 million / ፖዛርቲቭ ለጥናታዊነት ያላቸው ለጥናቶች መመስረት በኋላ ተጨማሪ የፋይናንስ ምልዕረት - \$45 ፐርሻድ ምልዕረት
- Child Care Infrastructure - \$15 million / < ልባይ - \$15 ፐርሻድ ምልዕረት
- MHOT Wildlife Compensation - \$1.3 million / ፖለቲካዊ ኮሚሽን አቅጣጫ ምልዕረት - \$1.3 ፐርሻድ ምልዕረት
- Inuit Training Centre - \$10 million / ልማት ለርሃዊነት - \$10 ፐርሻድ ምልዕረት

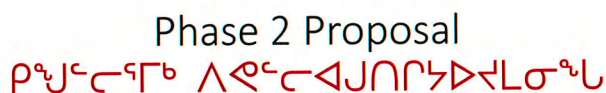
OTHER  
FINANCIAL  
OBLIGATIONS  
ᐃᐱᐱᐱ  
ᐃᐱᐱᐱᐱᐱᐱᐱᐱᐱ  
ᐃᐱᐱᐱᐱᐱᐱᐱᐱᐱᐱ  
ᐃᐱᐱᐱᐱᐱᐱᐱᐱᐱᐱ

- Wildlife Compensation Fund - \$750,000 / **ᐃᓱᓕᓕᓄᓐᓴᓐ ᐱᓕᓕᓕᓄᓐᓴᓐ ᓱᐃᓄᓕ - \$175,000**  
 • Water Compensation - **ᐃᓱᓕᓕᓄᓐᓴᓐ ᐱᓕᓕᓕᓄᓐᓴᓐ**  
 • Aggregate Royalty - over \$27 million / **ᐃᓱᓕᓕᓄᓐᓴᓐ ᐱᓕᓕᓕᓄᓐᓴᓐ ᐱᓕᓕᓕᓄᓐᓴᓐ - \$27 ᓕᓄᓐᓴᓐ ᐱᓕᓕᓕᓄᓐᓴᓐ**  
 • Commercial Lease Payments - \$73 million Life of Mine / **ᐃᓱᓕᓕᓄᓐᓴᓐ ᐱᓕᓕᓕᓄᓐᓴᓐ ᐱᓕᓕᓕᓄᓐᓴᓐ - \$73 ᓕᓄᓐᓴᓐ ᐱᓕᓕᓕᓄᓐᓴᓐ**  
 • IIBA Royalties - over \$900 million Life of Mine / **ᐃᓱᓕᓕᓄᓐᓴᓐ ᐱᓕᓕᓕᓄᓐᓴᓐ ᐱᓕᓕᓕᓄᓐᓴᓐ ᐱᓕᓕᓕᓄᓐᓴᓐ - \$900 ᓕᓄᓐᓴᓐ ᐱᓕᓕᓕᓄᓐᓴᓐ**  
 • NTL FM Royalty - over \$1 billion Life of Mine / **ᐃᓱᓕᓕᓄᓐᓴᓐ ᐱᓕᓕᓕᓄᓐᓴᓐ ᐱᓕᓕᓕᓄᓐᓴᓐ - \$1 ᓕᓄᓐᓴᓐ ᐱᓕᓕᓕᓄᓐᓴᓐ**





ዓመታት ይገባል፡፡ ለዚህም ምክንያት ለሀገራችን የሚገባውን የፍትሕ ምርጫ ማድረግ አስፈላጊ ነው፡፡ ለዚህም ምክንያት ለሀገራችን የሚገባውን የፍትሕ ምርጫ ማድረግ አስፈላጊ ነው፡፡



- Up to \$3 million for affected communities (\$15 million in total) to build childcare facilities. (to be expanded when Steensby proceeds)



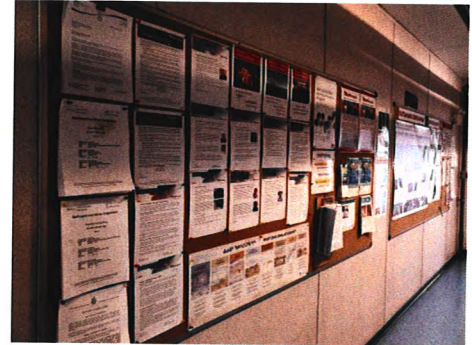


## Benefit Enhancement Measures ልብረታዊነት ለማረጋገጥና ማረጋገጥ

### Inuit Employment and Training

ፈጣን ልማትና ልማት ለሚፈጸሙበት

- Priority Inuit hiring  
 ለፈጣን ልማትና ልማት ለሚፈጸሙበት
- Inuit Human Resources Strategy  
 ፈጣን ልማትና ልማት ለሚፈጸሙበት
- Work Ready Program, Apprenticeship Program, Heavy Equipment Operator Training Program, etc.  
 ለፈጣን ልማትና ልማት ለሚፈጸሙበት
- \$1.5 million/year for Inuit training for life of Mine  
 \$1.5 ሺህ ዓመታዊ ስልጠና/ፈጣን ልማት ለሚፈጸሙበት

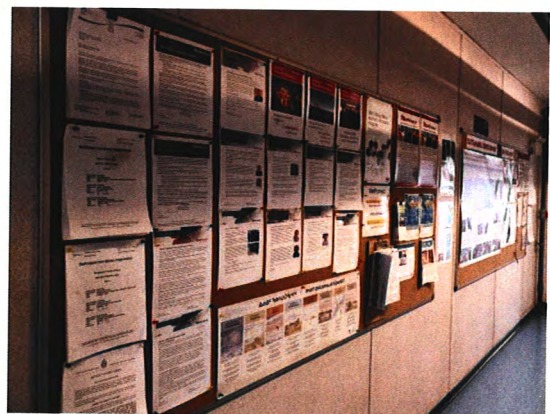


## Benefit Enhancement Measures ልብረታዊነት ለማረጋገጥና ማረጋገጥ

### Inuit Employment and Training

ፈጣን ልማትና ልማት ለሚፈጸሙበት

- Inuit Employee Mobility Strategy  
 ፈጣን ልማትና ልማት ለሚፈጸሙበት
- Arnait Action Plan  
 ለፈጣን ልማትና ልማት ለሚፈጸሙበት
- Scholarships, donations, other support  
 ለፈጣን ልማትና ልማት ለሚፈጸሙበት
- \$10 million towards training centre in Pond Inlet  
 \$10 ሺህ ዓመታዊ ስልጠና ለሚፈጸሙበት
- Baffinland Inuit Employee Childcare Allowance  
 ለፈጣን ልማትና ልማት ለሚፈጸሙበት



Site Policies and Announcements / ስልጠናና ልማት ለሚፈጸሙበት











## Benefit Enhancement Measures

Δεξιόστροφος Απρόσπαστος Διπλός

Food Security/ **ᑭᓱᑭᓴᑦᑎᐱᑦᑭᓴᑦ**

- School Lunch Program (\$300,000/year)  
ፈረድ ማህተም ይቀርባልናል ለሥራው  
(\$300,000/ዓመት)
- Community food bank donations  
የዕለታዊ የጋራ ቤት አቅርቦት
- Seasonal Country Food Exchange Program  
ዓመታዊ የክፍለ-አካባቢ ምግብ መለወጫ  
የዓመታዊ የክፍለ-አካባቢ ምግብ መለወጫ
- Country food kitchens  
የዕለታዊ የጋራ ቤት አቅርቦት



[www.baffinland.com](http://www.baffinland.com)

37



## Benefit Enhancement Measures

Δεῖτε ὅτι ἡ ἀποστολή ἐστὶν ἡ ἀποστολή

Food Security/ **ፍጥነት/ጥራት/ፍጥነት**

- Pond Inlet and regional hunter enabler programs  
ᑦᓴᐱᒪᕐᕋ ᐃᑭᐸᐅ ᐊᖁᑐᙳᔨᓯᓲᓂᓄᓂ
- Tasiuqtiit Working Groups  
ᕈᐅᙳᐱᕐ ᐱᕐᓇᓰᙳᔨᕐ ᑲᐱᒪᓵᕐ
- Other initiatives  
ᐊᓯᙳᔨᕐ ᐱᕐᓇᐅᓚᐅᓗᓗᓴᙳᐅᕐ



[www.baffinland.com](http://www.baffinland.com)

38



### Mitigation/Enhancement Measures

[illegible]

## Culture, Resources, and Land Use

Δርጅዎች, ወደፊት ለመሄድ ለሚችሉት ሰራተኞች

- Wildlife-specific mitigation  
 ሙናዊ ጥበቃና ልማት ለግሪፍ ልብ ወለድ
- Wildlife Compensation Fund (\$750,000)  
 የግሪፍ ልብ ወለድ ለግሪፍ ልብ ወለድ  
 (\$750,000)
- Pond Inlet Harvesters Enabling Program  
 ፍሪንግተን ለግሪፍ ልብ ወለድ ለግሪፍ ልብ ወለድ
- Regional Harvesters Enabling Program  
 ለግሪፍ ልብ ወለድ ለግሪፍ ልብ ወለድ ለግሪፍ ልብ ወለድ



Bruce Head Monitoring Program /  $\Delta$   $\gamma$   $\delta$   $\epsilon$   $\zeta$   $\eta$   $\theta$   $\iota$   $\kappa$   $\lambda$   $\mu$   $\nu$   $\xi$   $\omicron$   $\pi$   $\rho$   $\sigma$   $\tau$   $\upsilon$   $\phi$   $\chi$   $\psi$   $\omega$

### Mitigation/Enhancement Measures

[illegible]

### Culture, Resources, and Land Use

**ᐃᑦᓴᐅᑭᑯᑦ, ᓄᓇᒻᓴᓴᐅᓂᑦ, ᐱᒪᓗ ᓄᓇ ᐃᑯᐅᐸᓴᓴᓂᑦ**

- Site access procedures and support  
 Ելահրաշխագրություն և օգնություն  
 Ելահրաշխագրություն
- Fuel, food, shelter to visitors  
 Ելահրաշխագրություն, սնունդ, ապաստան  
 Ելահրաշխագրություն
- Updated road/rail Safety Protocol and Communication Plan  
 Ելահրաշխագրություն և Ելահրաշխագրություն  
 Ելահրաշխագրություն և Ելահրաշխագրություն  
 Ելահրաշխագրություն և Ելահրաշխագրություն
- Updated rail alignment – Deviation Option 3  
 Ելահրաշխագրություն և Ելահրաշխագրություն  
 Ելահրաշխագրություն և Ելահրաշխագրություն



Bruce Head Monitoring Program / Δαδαιγ Πάσιπσ'ι Ατνλδ



[illegible][illegible][illegible]



## Socio-Economic Effects Assessment Key Findings

[illegible]

**Education and Training /  $\Delta^{\alpha}\sigma\Delta^{\gamma}\sigma^{\beta}$   $\Delta\mathbb{L}$**   
 **$\Delta\mathbb{L}^{\beta}\Delta\mathbb{O}^{\gamma}\mathbb{O}^{\beta}$**

- Project training and skill development opportunities, educational incentives  
ፈረንሳይኛ ስልጠናዎችን በማቀጣጠል የቴክኖሎጂውን ምርጫ ተስተካክሏል
- Significant beneficial effects  
የቴክኖሎጂውን ምርጫ ተስተካክሏል



## Socio-Economic Effects Assessment Key Findings

[illegible]

**Livelihood and Employment /**  
**የዕቃደርጋጋጋናፍጥና ልማት ልማት**

- Project employment and career development opportunities  
 ድንገተኛ ልማት ለሕጻናትና ለሥራ ልማት  
 ለሕጻናት ለሥራ ልማት  
 ለሕጻናት ለሥራ ልማት
- Significant beneficial effects  
 ለሕጻናት ለሥራ ልማት





## Socio-Economic Effects Assessment Key Findings

[illegible]

## Economic Development and Self-Reliance

Λ<sup>bc</sup>→Δσ<sup>5b</sup> Δ<sup>L</sup>L→ q<sup>5b</sup>Γσ<sup>5b</sup>ρ<sup>a</sup>q<sup>5b</sup>ρσ<sup>5b</sup>

- [illegible]



## Socio-Economic Effects Assessment Key Findings

ᐅᓂᐃᓄᓂᓂᓂᓂᓂᓂ ᓂᐃᓄᓂᓂᓂᓂᓂᓂ

**ኖፔል ስራዎች**

## Human Health and Well-Being /

$\Delta \sigma \Delta^c$   $\nabla^a \sigma \nabla^b C \Delta c \sigma^a r^c$   $\nabla^L L_j$   $\nabla^b \sigma \Delta^c C \Delta c \sigma^a r^c$

- Well-being of children, substance abuse, community social stability; counselling and support resources available  
ኖሞል ርዕሰ ጉዳይ ምንም ዓይነት አፋኝ ምርጫ ሊያስፈልግም አይችልም፡፡ ለአብዛኛው የህጻናት ጤና እና ለማህበረሰባችን ጤናማ መኖሪያ ሲሆን፡፡
- Significant and non-significant beneficial effects  
የተለያዩ ምርጫዎች በሀገሪቱ ላይ ተፅዕኖ ሊሰጥላቸው ይችላሉ፡፡ ለአብዛኛው የህጻናት ጤና እና ለማህበረሰባችን ጤናማ መኖሪያ ሲሆን፡፡
- No significant adverse effects  
የተለያዩ ምርጫዎች በሀገሪቱ ላይ ተፅዕኖ ሊሰጥላቸው ይችላሉ፡፡ ለአብዛኛው የህጻናት ጤና እና ለማህበረሰባችን ጤናማ መኖሪያ ሲሆን፡፡





## Socio-Economic Effects Assessment Key Findings

[illegible]

Community Infrastructure and Public Services /  
 ሙሉም ለኖሰኛላቸው ልሳሊ ልዎል፣ የኮንስትራክሽን  
 ለጎረቤቶቻችን

- [illegible]

Camp Life/  $\Delta\gamma\varsigma^{\alpha}\sigma\Delta^{\alpha}\Gamma$   $\Delta\phi\gamma^{\alpha}$ 

## Socio-Economic Effects Assessment Key Findings

[illegible]

## Contracting and Business Opportunities / ኮንትራክቲንግና ኢንቨስትመንት ዕድሜዎች

- Project business opportunities, expanded markets  
 ፈተናዊ ስራዎችን ለማግኘትና ለማስፈጸም ማብራሪያ ማድረግ
- Significant beneficial effects  
 ለወጪ ሰው ምርት ማሳደግ





## Socio-Economic Effects Assessment Key Findings

[illegible]

## Benefits, Royalty, and Taxation /

Δ<sub>6</sub>Δ<sub>7</sub>Δ<sub>8</sub>Δ<sub>9</sub>Δ<sub>10</sub>Δ<sub>11</sub>Δ<sub>12</sub>Δ<sub>13</sub>Δ<sub>14</sub>Δ<sub>15</sub>Δ<sub>16</sub>Δ<sub>17</sub>Δ<sub>18</sub>Δ<sub>19</sub>Δ<sub>20</sub>Δ<sub>21</sub>Δ<sub>22</sub>Δ<sub>23</sub>Δ<sub>24</sub>Δ<sub>25</sub>Δ<sub>26</sub>Δ<sub>27</sub>Δ<sub>28</sub>Δ<sub>29</sub>Δ<sub>30</sub>Δ<sub>31</sub>Δ<sub>32</sub>Δ<sub>33</sub>Δ<sub>34</sub>Δ<sub>35</sub>Δ<sub>36</sub>Δ<sub>37</sub>Δ<sub>38</sub>Δ<sub>39</sub>Δ<sub>40</sub>Δ<sub>41</sub>Δ<sub>42</sub>Δ<sub>43</sub>Δ<sub>44</sub>Δ<sub>45</sub>Δ<sub>46</sub>Δ<sub>47</sub>Δ<sub>48</sub>Δ<sub>49</sub>Δ<sub>50</sub>Δ<sub>51</sub>Δ<sub>52</sub>Δ<sub>53</sub>Δ<sub>54</sub>Δ<sub>55</sub>Δ<sub>56</sub>Δ<sub>57</sub>Δ<sub>58</sub>Δ<sub>59</sub>Δ<sub>60</sub>Δ<sub>61</sub>Δ<sub>62</sub>Δ<sub>63</sub>Δ<sub>64</sub>Δ<sub>65</sub>Δ<sub>66</sub>Δ<sub>67</sub>Δ<sub>68</sub>Δ<sub>69</sub>Δ<sub>70</sub>Δ<sub>71</sub>Δ<sub>72</sub>Δ<sub>73</sub>Δ<sub>74</sub>Δ<sub>75</sub>Δ<sub>76</sub>Δ<sub>77</sub>Δ<sub>78</sub>Δ<sub>79</sub>Δ<sub>80</sub>Δ<sub>81</sub>Δ<sub>82</sub>Δ<sub>83</sub>Δ<sub>84</sub>Δ<sub>85</sub>Δ<sub>86</sub>Δ<sub>87</sub>Δ<sub>88</sub>Δ<sub>89</sub>Δ<sub>90</sub>Δ<sub>91</sub>Δ<sub>92</sub>Δ<sub>93</sub>Δ<sub>94</sub>Δ<sub>95</sub>Δ<sub>96</sub>Δ<sub>97</sub>Δ<sub>98</sub>Δ<sub>99</sub>Δ<sub>100</sub>Δ<sub>101</sub>Δ<sub>102</sub>Δ<sub>103</sub>Δ<sub>104</sub>Δ<sub>105</sub>Δ<sub>106</sub>Δ<sub>107</sub>Δ<sub>108</sub>Δ<sub>109</sub>Δ<sub>110</sub>Δ<sub>111</sub>Δ<sub>112</sub>Δ<sub>113</sub>Δ<sub>114</sub>Δ<sub>115</sub>Δ<sub>116</sub>Δ<sub>117</sub>Δ<sub>118</sub>Δ<sub>119</sub>Δ<sub>120</sub>Δ<sub>121</sub>Δ<sub>122</sub>Δ<sub>123</sub>Δ<sub>124</sub>Δ<sub>125</sub>Δ<sub>126</sub>Δ<sub>127</sub>Δ<sub>128</sub>Δ<sub>129</sub>Δ<sub>130</sub>Δ<sub>131</sub>Δ<sub>132</sub>Δ<sub>133</sub>Δ<sub>134</sub>Δ<sub>135</sub>Δ<sub>136</sub>Δ<sub>137</sub>Δ<sub>138</sub>Δ<sub>139</sub>Δ<sub>140</sub>Δ<sub>141</sub>Δ<sub>142</sub>Δ<sub>143</sub>Δ<sub>144</sub>Δ<sub>145</sub>Δ<sub>146</sub>Δ<sub>147</sub>Δ<sub>148</sub>Δ<sub>149</sub>Δ<sub>150</sub>Δ<sub>151</sub>Δ<sub>152</sub>Δ<sub>153</sub>Δ<sub>154</sub>Δ<sub>155</sub>Δ<sub>156</sub>Δ<sub>157</sub>Δ<sub>158</sub>Δ<sub>159</sub>Δ<sub>160</sub>Δ<sub>161</sub>Δ<sub>162</sub>Δ<sub>163</sub>Δ<sub>164</sub>Δ<sub>165</sub>Δ<sub>166</sub>Δ<sub>167</sub>Δ<sub>168</sub>Δ<sub>169</sub>Δ<sub>170</sub>Δ<sub>171</sub>Δ<sub>172</sub>Δ<sub>173</sub>Δ<sub>174</sub>Δ<sub>175</sub>Δ<sub>176</sub>Δ<sub>177</sub>Δ<sub>178</sub>Δ<sub>179</sub>Δ<sub>180</sub>Δ<sub>181</sub>Δ<sub>182</sub>Δ<sub>183</sub>Δ<sub>184</sub>Δ<sub>185</sub>Δ<sub>186</sub>Δ<sub>187</sub>Δ<sub>188</sub>Δ<sub>189</sub>Δ<sub>190</sub>Δ<sub>191</sub>Δ<sub>192</sub>Δ<sub>193</sub>Δ<sub>194</sub>Δ<sub>195</sub>Δ<sub>196</sub>Δ<sub>197</sub>Δ<sub>198</sub>Δ<sub>199</sub>Δ<sub>200</sub>Δ<sub>201</sub>Δ<sub>202</sub>Δ<sub>203</sub>Δ<sub>204</sub>Δ<sub>205</sub>Δ<sub>206</sub>Δ<sub>207</sub>Δ<sub>208</sub>Δ<sub>209</sub>Δ<sub>210</sub>Δ<sub>211</sub>Δ<sub>212</sub>Δ<sub>213</sub>Δ<sub>214</sub>Δ<sub>215</sub>Δ<sub>216</sub>Δ<sub>217</sub>Δ<sub>218</sub>Δ<sub>219</sub>Δ<sub>220</sub>Δ<sub>221</sub>Δ<sub>222</sub>Δ<sub>223</sub>Δ<sub>224</sub>Δ<sub>225</sub>Δ<sub>226</sub>Δ<sub>227</sub>Δ<sub>228</sub>Δ<sub>229</sub>Δ<sub>230</sub>Δ<sub>231</sub>Δ<sub>232</sub>Δ<sub>233</sub>Δ<sub>234</sub>Δ<sub>235</sub>Δ<sub>236</sub>Δ<sub>237</sub>Δ<sub>238</sub>Δ<sub>239</sub>Δ<sub>240</sub>Δ<sub>241</sub>Δ<sub>242</sub>Δ<sub>243</sub>Δ<sub>244</sub>Δ<sub>245</sub>Δ<sub>246</sub>Δ<sub>247</sub>Δ<sub>248</sub>Δ<sub>249</sub>Δ<sub>250</sub>Δ<sub>251</sub>Δ<sub>252</sub>Δ<sub>253</sub>Δ<sub>254</sub>Δ<sub>255</sub>Δ<sub>256</sub>Δ<sub>257</sub>Δ<sub>258</sub>Δ<sub>259</sub>Δ<sub>260</sub>Δ<sub>261</sub>Δ<sub>262</sub>Δ<sub>263</sub>Δ<sub>264</sub>Δ<sub>265</sub>Δ<sub>266</sub>Δ<sub>267</sub>Δ<sub>268</sub>Δ<sub>269</sub>Δ<sub>270</sub>Δ<sub>271</sub>Δ<sub>272</sub>Δ<sub>273</sub>Δ<sub>274</sub>Δ<sub>275</sub>Δ<sub>276</sub>Δ<sub>277</sub>Δ<sub>278</sub>Δ<sub>279</sub>Δ<sub>280</sub>Δ<sub>281</sub>Δ<sub>282</sub>Δ<sub>283</sub>Δ<sub>284</sub>Δ<sub>285</sub>Δ<sub>286</sub>Δ<sub>287</sub>Δ<sub>288</sub>Δ<sub>289</sub>Δ<sub>290</sub>Δ<sub>291</sub>Δ<sub>292</sub>Δ<sub>293</sub>Δ<sub>294</sub>Δ<sub>295</sub>Δ<sub>296</sub>Δ<sub>297</sub>Δ<sub>298</sub>Δ<sub>299</sub>Δ<sub>300</sub>Δ<sub>301</sub>Δ<sub>302</sub>Δ<sub>303</sub>Δ<sub>304</sub>Δ<sub>305</sub>Δ<sub>306</sub>Δ<sub>307</sub>Δ<sub>308</sub>Δ<sub>309</sub>Δ<sub>310</sub>Δ<sub>311</sub>Δ<sub>312</sub>Δ<sub>313</sub>Δ<sub>314</sub>Δ<sub>315</sub>Δ<sub>316</sub>Δ<sub>317</sub>Δ<sub>318</sub>Δ<sub>319</sub>Δ<sub>320</sub>Δ<sub>321</sub>Δ<sub>322</sub>Δ<sub>323</sub>Δ<sub>324</sub>Δ<sub>325</sub>Δ<sub>326</sub>Δ<sub>327</sub>Δ<sub>328</sub>Δ<sub>329</sub>Δ<sub>330</sub>Δ<sub>331</sub>Δ<sub>332</sub>Δ<sub>333</sub>Δ<sub>334</sub>Δ<sub>335</sub>Δ<sub>336</sub>Δ<sub>337</sub>Δ<sub>338</sub>Δ<sub>339</sub>Δ<sub>340</sub>Δ<sub>341</sub>Δ<sub>342</sub>Δ<sub>343</sub>Δ<sub>344</sub>Δ<sub>345</sub>Δ<sub>346</sub>Δ<sub>347</sub>Δ<sub>348</sub>Δ<sub>349</sub>Δ<sub>350</sub>Δ<sub>351</sub>Δ<sub>352</sub>Δ<sub>353</sub>Δ<sub>354</sub>Δ<sub>355</sub>Δ<sub>356</sub>Δ<sub>357</sub>Δ<sub>358</sub>Δ<sub>359</sub>Δ<sub>360</sub>Δ<sub>361</sub>Δ<sub>362</sub>Δ<sub>363</sub>Δ<sub>364</sub>Δ<sub>365</sub>Δ<sub>366</sub>Δ<sub>367</sub>Δ<sub>368</sub>Δ<sub>369</sub>Δ<sub>370</sub>Δ<sub>371</sub>Δ<sub>372</sub>Δ<sub>373</sub>Δ<sub>374</sub>Δ<sub>375</sub>Δ<sub>376</sub>Δ<sub>377</sub>Δ<sub>378</sub>Δ<sub>379</sub>Δ<sub>380</sub>Δ<sub>381</sub>Δ<sub>382</sub>Δ<sub>383</sub>Δ<sub>384</sub>Δ<sub>385</sub>Δ<sub>386</sub>Δ<sub>387</sub>Δ<sub>388</sub>Δ<sub>389</sub>Δ<sub>390</sub>Δ<sub>391</sub>Δ<sub>392</sub>Δ<sub>393</sub>Δ<sub>394</sub>Δ<sub>395</sub>Δ<sub>396</sub>Δ<sub>397</sub>Δ<sub>398</sub>Δ<sub>399</sub>Δ<sub>400</sub>Δ<sub>401</sub>Δ<sub>402</sub>Δ<sub>403</sub>Δ<sub>404</sub>Δ<sub>405</sub>Δ<sub>406</sub>Δ<sub>407</sub>Δ<sub>408</sub>Δ<sub>409</sub>Δ<sub>410</sub>Δ<sub>411</sub>Δ<sub>412</sub>Δ<sub>413</sub>Δ<sub>414</sub>Δ<sub>415</sub>Δ<sub>416</sub>Δ<sub>417</sub>Δ<sub>418</sub>Δ<sub>419</sub>Δ<sub>420</sub>Δ<sub>421</sub>Δ<sub>422</sub>Δ<sub>423</sub>Δ<sub>424</sub>Δ<

- IIBA, revenues to Inuit organizations and government
- Significant beneficial effects



October 2018 Signing of Amended IIBA / ዓገሱ 2018 ልብ-ወለድ የኢንተርናሽናል ኢንቨስትመንት ባንክ ማህበራዊ

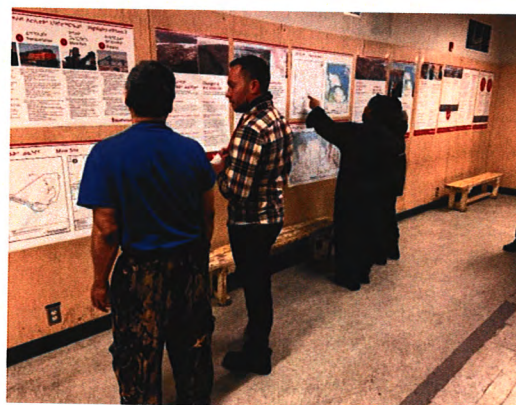
## Socio-Economic Effects Assessment Key Findings

[illegible]

## Governance and Leadership /

**፤ ማረጋገጫ ምክር ቤቱ**

- [illegible]





## Socio-Economic Effects Assessment Key Findings

[illegible]**Culture, Resources, and Land Use (CRLU) /**

ΔC<sup>6</sup>D<sup>12</sup>, 90.0%<sup>1</sup>, 4.4%<sup>2</sup>

- How the Project may affect Inuit land use, harvesting of wildlife, and culture  
ᑭᓂᓄ ᐱᑕᓚᐸᑦ ᐸᑦᑐᐸᓂᑦᔨᓄᓐ ᓴᓴᓴᓴᓴ  
ᐸᓄᐸᑦ ᓄᓇᒥ ᐸᑦᑖᑦᑕᑦᓂᑦᓯᓂᑦ,  
ᐸᓴᓄᓴᑦᑕᑦᓂᑦᓯᓂᑦ ᓂᑦᐸᑖᑖᑦᑕ, ᐸᓴᓴᓴ  
ᐸᑦᑖᑦᑕᓯᓂᑦ ᐸᑦᑖᑦᑕᓰᑦ
- Cultural resources  
ᐸᑦᑖᑦᑕᓯᓂᑦ ᐸᑦᑖᑦᑕᓰᑦ



Community Workshop in Pond Inlet / ᓄᓇᓕᓐᑦ ᑲᑎᑎᑦᑎᓂᓐ ᑦᑎᑎᑦᑎᓂᓐ

## Socio-Economic Effects Assessment Key Findings

[illegible]

### Culture, Resources, and Land Use (CRLU) /

$\Delta C^{\text{fb}} \rho^{\text{fb}}$ ,  $m_{\text{eff}}^{\text{fb}} \gg m_{\text{eff}}^{\text{C}}$ ,  $\langle L \rangle$   $m_{\text{eff}}^{\text{C}}$

- [illegible]

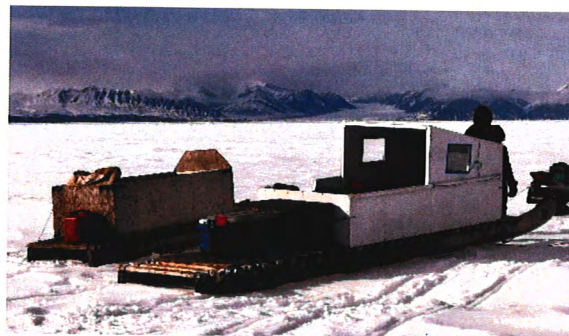




## Socio-Economic Effects Assessment Key Findings

[illegible]Food Security / **စာအုပ်အုပ်စု**

- The Project provides benefits that help address this issue  
 ለርሲጭ ልብኅነቱና ስጦታው ለጥቅም ሆኖ ሊገለጽ ይችላል
- Communities are concerned the Project may affect the availability of country food. Adverse effects to country food are predicted to be low magnitude; several mitigation measures developed.  
 ወደ ጥቅም ሆኖ ሊገለጽ ለጥቅም ሆኖ ሊገለጽ ይችላል ለጥቅም ሆኖ ሊገለጽ ይችላል ለጥቅም ሆኖ ሊገለጽ ይችላል

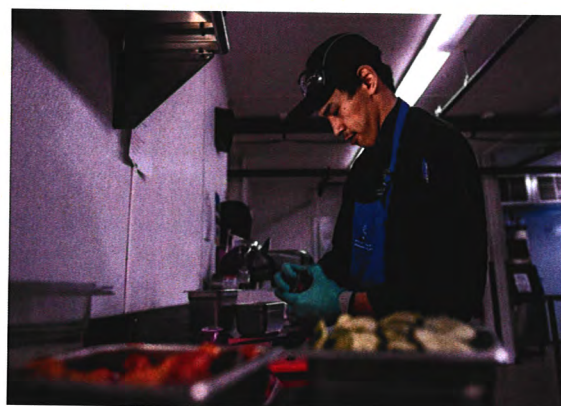


## Socio-Economic Effects Assessment Key Findings

**၎င်းတို့သည် အောက်ပါအတိုင်း ဖော်ပြထားပါသည်။**

Food Security / **ፍጥነት/ጥራት**

- Overall conclusions:  
CLADE ልዩ ልብ ያለውን ተጽእኖ አሳይቶአል
- Non-significant beneficial effect on country foods  
የቀበሌና የጋራ መመዝገቢያ ስርዓት ለጊዜ ላይ ለተጨማሪ ማስተካከያ አስፈላጊ ነው
- Significant beneficial effect on store-bought foods  
የቀበሌና የጋራ መመዝገቢያ ስርዓት ለጊዜ ላይ ለተጨማሪ ማስተካከያ አስፈላጊ ነው
- New food security monitoring indicators proposed  
ዘመናዊ የምግባር እና የጤና ማኔጅሜንት ስርዓት ለጊዜ ላይ ለተጨማሪ ማስተካከያ አስፈላጊ ነው





▷◁<sup>c</sup>σ<sup>5b</sup> ◁<sup>L</sup>L<sub>2</sub>

ፍፁም ልረጋግጥ ሲሆን ለፍጥነት ሲሆን

[illegible]

.....

**Annual Socio Economic Monitoring Programs and Initiatives under a Phase 2 Scenario**  
 የኢትዮጵያ ልማት ባንክ ለፖሊሲና ስራ ማስፈጸም ለሚያስችል የሥራ ስልጣን ለሚሰጥ  
 የሥራ ስልጣን ሰነድ ለማስፈጸም የሚያስችል ሥልጣን ለሚሰጥ

[illegible]



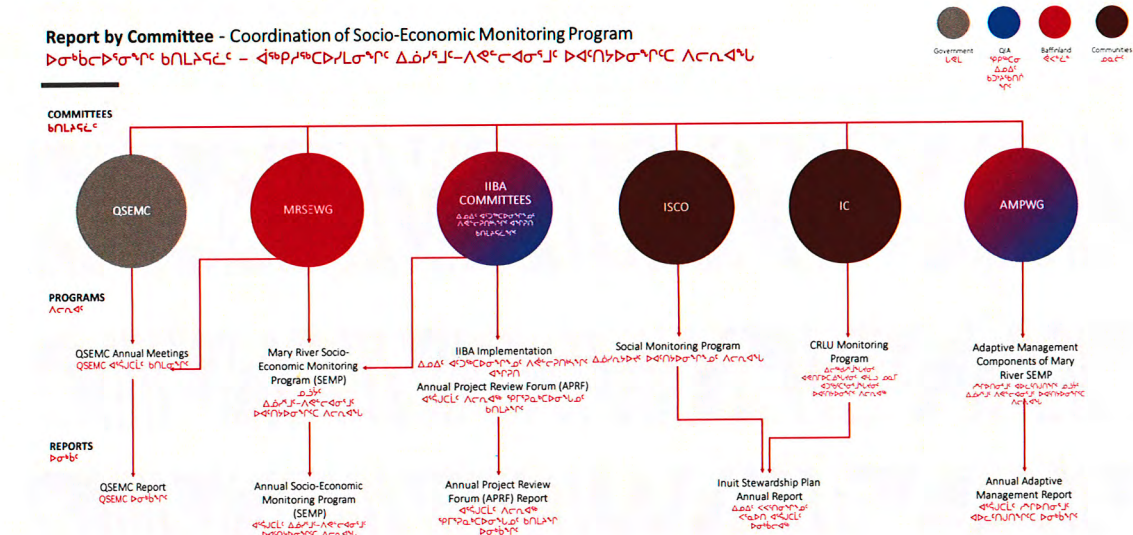
**Annual Socio Economic Monitoring Programs and Initiatives under a Phase 2 Scenario**

[illegible]

**Socio Economic Monitoring Supporting Initiatives**  
 ሳኖሪር ልዕሶ፣ ለድርጅታትን ለጥበቃና ለሥራ ልማት ማዕከላዊ ስልጠናዎች ለድርጅታት ማሳተፍ  
 የህግ ልማት ማረጋገጫ ስልጠናዎችን

[illegible]





## Adaptive Management

[illegible]

### 3. QIA Implements Inuit Stewardship Plan Monitoring Programs

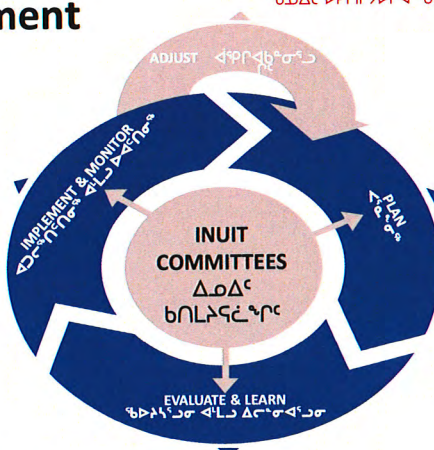
[illegible]

## 2. Review of Monitoring Program Results Against Predetermined Indicators and Thresholds

[illegible]

#### 4. Implement Predetermined Responses as Necessary

4.  $\Delta J C^{-5b} \Gamma C \Delta \Gamma C$   $\rho \sigma \Delta J C$   $a \Delta a \Delta^{5b} C D \Gamma L \Delta^{5b} J C$   
 $^{5b} \Delta C D C D \Gamma \Gamma \Delta \Gamma \Delta^{5b} L \Delta^{5b} \sigma^{5b} \Gamma C$   $C \Delta L \Delta \Gamma \Delta^{5b} \Delta^{5b} \Gamma C \Delta \Gamma C$



### 1. Baffinland and QIA Agree to Adaptive Management Plan; QIA Establishes Inuit Stewardship Plan

[illegible]





## Technical Review Summary

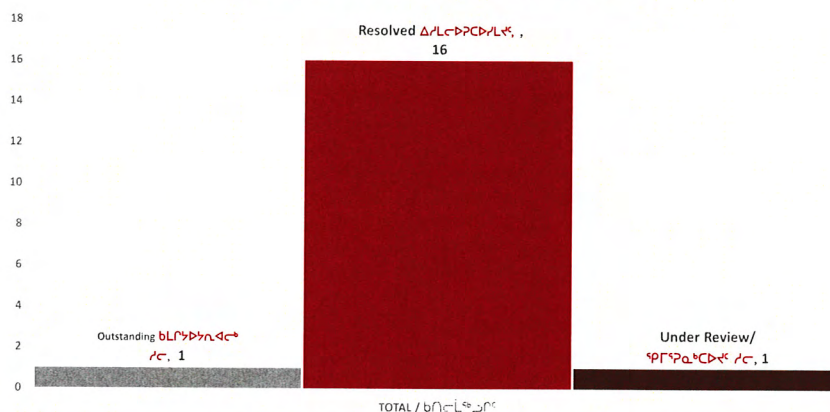
ሶሲዮኢኮኖሚክ  
ኖርምዲኔሚክ ስታዲየም

.....

## Status of Resolution

ኢኮኖሚክ ስታዲየም ኢኮኖሚክ ስታዲየም

Socio-Economic Environment  
ሶሲዮኢኮኖሚክ ስታዲየም





## Socio-Economic Environment

### Key Commitments

Δ.Φ.Γ.Π.-Α.Ε.Ε.Α.Δ.Σ.Γ. "Ε.Μ.Δ.Ε.Λ.Σ.Π.Ο."  
 Ε.Π.Ε.Δ.Ε.Α.Δ.Σ.Γ. "Ε.Μ.Δ.Ε.Λ.Σ.Π.Ο."

- [illegible]

## Socio-Economic Environment

### Key Commitments

Δ.Φ.Γ.Π.-Α.Ε.Ε.Δ.Σ.Γ.Π. ΉΜΕΔΕΛΟΝΤΕΣ  
 ΕΛΛΗΝΙΚΟ ΔΕΛΤΙΟ ΤΗΣ ΕΠΙΣΤΗΜΗΣ

- [illegible]



## Outstanding and Under Review – Socio-Economic Environment

ቴሌቪዥኒያልፎር ስር ላዚ ስፓርክ ነጥባዊ ምርጫ -  
ፈጣሪ-ፈጣሪ ስፓርክ ነጥባዊ ምርጫ

Comment Topic ጥያቄ/ጥያቄ ለፋይናንስ	Related ID's ጋራ/ጋራ ማረጋገጫ
Employment / ልማት/ፋይናንስ	MHTO-7b ፋይናንስ/ፋይናንስ ማረጋገጫ ፋይናንስ/ፋይናንስ-7b
Community Consultation / ልማት/ፋይናንስ	MHTO-2b ፋይናንስ/ፋይናንስ ማረጋገጫ ፋይናንስ/ፋይናንስ-2b



# Project Certificate Conditions

$\wedge$  ርብረብ  
 $\Delta$  ርብረብ ከጋራ ጋር ርብረብ ሆኖ ሊሆን ይችላል  
 $\nabla$  ርብረብ ሆኖ ሊሆን ይችላል

• • • • •



## Project Certificate Conditions

**ለጥራትና ልማት ዘርፍ የሚመዘገቡ ንጹህ ምርቶች**

- Condition Nos. 129 – 169 pertain to the socio-economic environment  
 ሊሮርፕላኒንግ ሲፈጸም 129 – 169 ጋኛህሊኖ  
 ልዎቻችን-ለድሮላሚች ነጻጻጽ ሊሰራጭ
- Baffinland’s recommended changes to the Project Certificate have been captured in its submission to NIRB  
 ረዕሴዎቹ ለፖሊሲና ለፖሊሲ ለፖሊሲ  
 ለፖሊሲና ለፖሊሲ ለፖሊሲ ለፖሊሲ ለፖሊሲ  
 ጋራ ለፖሊሲ ለፖሊሲ ለፖሊሲ ለፖሊሲ ለፖሊሲ
- Merging of similar monitoring conditions  
 ለፖሊሲና ለፖሊሲ ለፖሊሲ ለፖሊሲ ለፖሊሲ ለፖሊሲ
- Removal of duplicative monitoring conditions or those no longer relevant  
 ለፖሊሲና ለፖሊሲ ለፖሊሲ ለፖሊሲ ለፖሊሲ ለፖሊሲ



## Summary

**ᐃᓄᑦ ᐱᕈᕐᓂᒃ**

• • • • •



- 

Δ<sup>+</sup>Δ<sup>-</sup> ሲገኝበት 622, Δ<sup>+</sup>ጭጭ ሲገኝበት,  
ጭጭ ሲገኝበት 102  
Δ<sup>+</sup>ጭጭ, ጭጭ X0A 0H0