

EMERGENCY RESPONSE PLAN

MEADOWBANK PRECIOUS METAL PROPERTY NUNAVUT, CANADA

Prepared for:

**Western Atlas Resources Inc./
5530 Nunavut Inc.**

Suite 1700, 666 Burrard Street
Vancouver, BC V6C 2X8

Prepared by:



100, 11450 160 Street NW
Edmonton, AB T5M 3Y7

Effective Date: January 1, 2021

Contents

| | | |
|-------|--|----|
| 1 | Introduction | 1 |
| 1.1 | Contact Details | 1 |
| 1.2 | Purpose and Scope | 1 |
| 1.3 | Other Plans | 2 |
| 1.4 | Property and Camp Description | 2 |
| 2 | Pre-emergency Planning | 3 |
| 2.1 | Prevention | 3 |
| 2.2 | Hazard Identification..... | 3 |
| 2.2.1 | Toxicological and Physiochemical Properties of Chemicals | 3 |
| 2.2.2 | Fire | 3 |
| 2.2.3 | Medical Emergency | 4 |
| 2.2.4 | Extreme Weather..... | 4 |
| | CONTACT LIST | 10 |
| | 5530 Nunavut Inc - Meadowbank Precious Metal Property ERP RECORD | 12 |

Tables

| | |
|--|---|
| Table 2.1: Possible fire locations at the Meadowbank Precious Metal Property | 4 |
|--|---|

Appendices

| | |
|--|------------------------------|
| Appendix 1: Meadowbank Precious Metal Property Emergency Response Plan.... | Error! |
| | Bookmark not defined. |

Figures

| | | | |
|---|-----------------|-----------------|------------|
| Figure 1: Meadowbank Precious Metal Property Location | Error! | Bookmark | not |
| | defined. | | |

1 Introduction

The Meadowbank Precious Metal Property (the “Property” or “Project”) Emergency Response Plan (“ERP”) has been developed on behalf of 5530 Nunavut Inc., a wholly owned subsidiary of Western Atlas Resources Inc. (the “Company”) in accordance with applicable legislation, guidelines and best practices.

This ERP will come into effect January 1, 2021, pending approval from all relevant regulatory bodies. Copies and updates to this plan may be obtained via the Company or APEX Geoscience Ltd. (“APEX”). The ERP will be replaced, upon approval, if there are any significant changes to the activities outlined in the existing permits which warrant changes to the ERP. Minor changes will be submitted as an addendum to the ERP and submitted to the distribution list as required.

1.1 Contact Details

5530 Nunavut Inc.

Suite 1700, 666 Burrard Street
Vancouver, BC V6C 2X8
Tel: (604) 256-4777
www.westernar.com

APEX Geoscience Ltd.

100, 11450 160 Street NW
Edmonton, AB T5M 3Y7
Tel: (780) 467-3532
www.apexgeoscience.com

1.2 Purpose and Scope

The purpose of the Meadowbank Precious Metal Property ERP is to provide guidelines for all personnel that enable them to act appropriately and efficiently in the event of an emergency. Prompt, effective, and organized emergency response will ensure the safety of personnel, minimize effects on the environment, and help maintain a productive level of day to day operations at the Meadowbank Precious Metal Property.

The main goals of the plan are:

- To provide education and emergency preparedness training for all employees, contractors, and visitors at the Meadowbank Precious Metal Property.
- To enable personnel to respond to an emergency in a logical and coordinated manner in order to minimize injury, loss of property, and to mitigate environmental impacts.
- To maintain operations at a level as close as possible to normal during an emergency situation, and to restore normal operations quickly and efficiently.

The ERP will be available to all employees, contractors, and visitors at the Meadowbank Precious Metal Property. It will be posted at strategic areas around camp and at drill sites for reference. Personnel can contact their individual supervisors or the Project Supervisor if they wish to receive individual copies.

1.3 Other Plans

The ERP should be considered as a part of the Property wide management system. Other management plans in place at the Meadowbank Precious Metal Property include:

- Abandonment and Restoration Plan (ARP)
- Spill Prevention and Response Plan (SPRP)
- Environmental Management Plan (EMP)
- Fuel Management Plan (FMP)
- Waste Management Plan (WMP)

1.4 Property and Camp Description

The Meadowbank Precious Metal Project (the “Project”) is located in the eastern part of the District of Kivalliq, within 1:50,000 scale National Topographic System (“NTS”) map sheets 56D12, 66A09, 10 and 16 and 66H01 and 08. The Project consists of three non-contiguous claim blocks (Black A, B and C) located on Crown Lands, approximately 50 km north of the community of Qamani'tuaq (Baker Lake) and 280 km northwest of the community of Kangiqliniq (Rankin Inlet).

The mineral claims are all 100% owned by 5530 Nunavut Inc, a wholly owned subsidiary of Western Atlas Resources Inc. All claim blocks comprising the Project are accessible by helicopter and the Agnico Eagle Mines Limited (“Agnico”) All Weather Access Road (“AWAR”), linking Baker Lake to Agnico’s Eagle’s Meadowbank and Amaruq mines. Permission is required from Agnico to use the AWAR.

Exploration activities on the Meadowbank Precious Metal Property to date include: helicopter-borne, versatile time domain electromagnetic (“VTEM”) surveys, ground induced polarization (“IP”) surveys, geological mapping, prospecting and rock geochemical sampling in 2018; a Property visit in 2019 and diamond drilling of 13 holes from 7 platforms in 2020. During the 2020 drilling program, on the request of Agnico, the AWAR was used by Agnico Eagle’s Energy and Infrastructure team to refuel an Orbit Garant fuel storage container located at Kilometer 58 on the Agnico AWAR in order to assist Western Atlas to reduce the amount of helicopter flights required to refuel the drill.

Although a 10-person temporary camp with fuel cache is currently permitted at the project, the 2018, 2019 and 2020 programs were based out of Baker Lake. The 2021 and other future programs will either be based out of Baker Lake once again or supported by a temporary 20-40 person exploration camp with fuel cache. Structures for the proposed camp will include 10 sleeper tents, 1 medical tent, 1 kitchen, 1 dry (with showers), 1 office tent, core shack, generator shack, incinerator and outhouses/pacto systems. The majority of the structures will be insulated Weatherhaven tents, or similar, with plywood floors.

5530 Nunavut Inc. proposes to drill 15,000 to 20,000 m annually. Annual drilling programs are anticipated to commence approximately April 1 and run for 12 weeks (84

days). All field work and drilling will be confined to the Meadowbank Precious Metal Property mineral claims as illustrated in the Project Location Figure).

2 Pre-emergency Planning

The responsibility for administration of the ERP will rest with the Project Supervisor. The Camp Manager and Project Geologist will support the Supervisor, and work together with the Site Safety Coordinator to ensure the plan is implemented effectively. Updates and modifications will be made as necessary.

2.1 Prevention

5530 Nunavut Inc. is committed to a prevention strategy of ongoing maintenance, inventory control, and staff training. The following will be standard practice at the Meadowbank Precious Metal Property:

- All equipment and machinery will be inspected and serviced regularly to ensure it is safe and in good working condition. Specific training will be provided for the safe use of each type of equipment and machinery on site.
- All hazardous materials will be stored in a safe and appropriate manner, as required for each individual product as set out in the manufacturer's Material Safety Data Sheets (MSDS) and in accordance with the Meadowbank Precious Metal Property "Spill Prevention and Response Plan" and "Fuel Management Plan".
- All hazardous materials will be subject to strict inventory control. Logs will be kept and regular inspections will be performed.
- Daily and weekly safety meetings will focus on improving safety and environmental performance. Personnel will be reminded of possible hazards and consequences, as well as any countermeasures and the resources available during an emergency situation.

2.2 Hazard Identification

2.2.1 Toxicological and Physiochemical Properties of Chemicals

The Material Safety Data Sheets (MSDS) will be posted in binders at all safety stations on site. They can also be found in the "Spill Prevention and Response Plan".

2.2.2 Fire

All precautions possible will be taken to prevent fires at the site, because the difficulty in effectively fighting fires at this remote location. Locations of fire alarms and evacuations routes (if not obvious, e.g. only one door) will be posted in all work areas; fire extinguishers will be clearly marked in an approved manner. The potential for a fire at the Meadowbank Precious Metal Property are identified in Table 2.1.

Table 2.1: Possible fire locations at the Meadowbank Precious Metal Property

| Location | Precautions |
|-----------------|-----------------------------|
| Camp Tents | Fire extinguishers |
| Generator House | Chemical fire extinguishers |
| Fuel Cache | Fire extinguishers |
| Drills | Fire extinguishers |

2.2.3 Medical Emergency

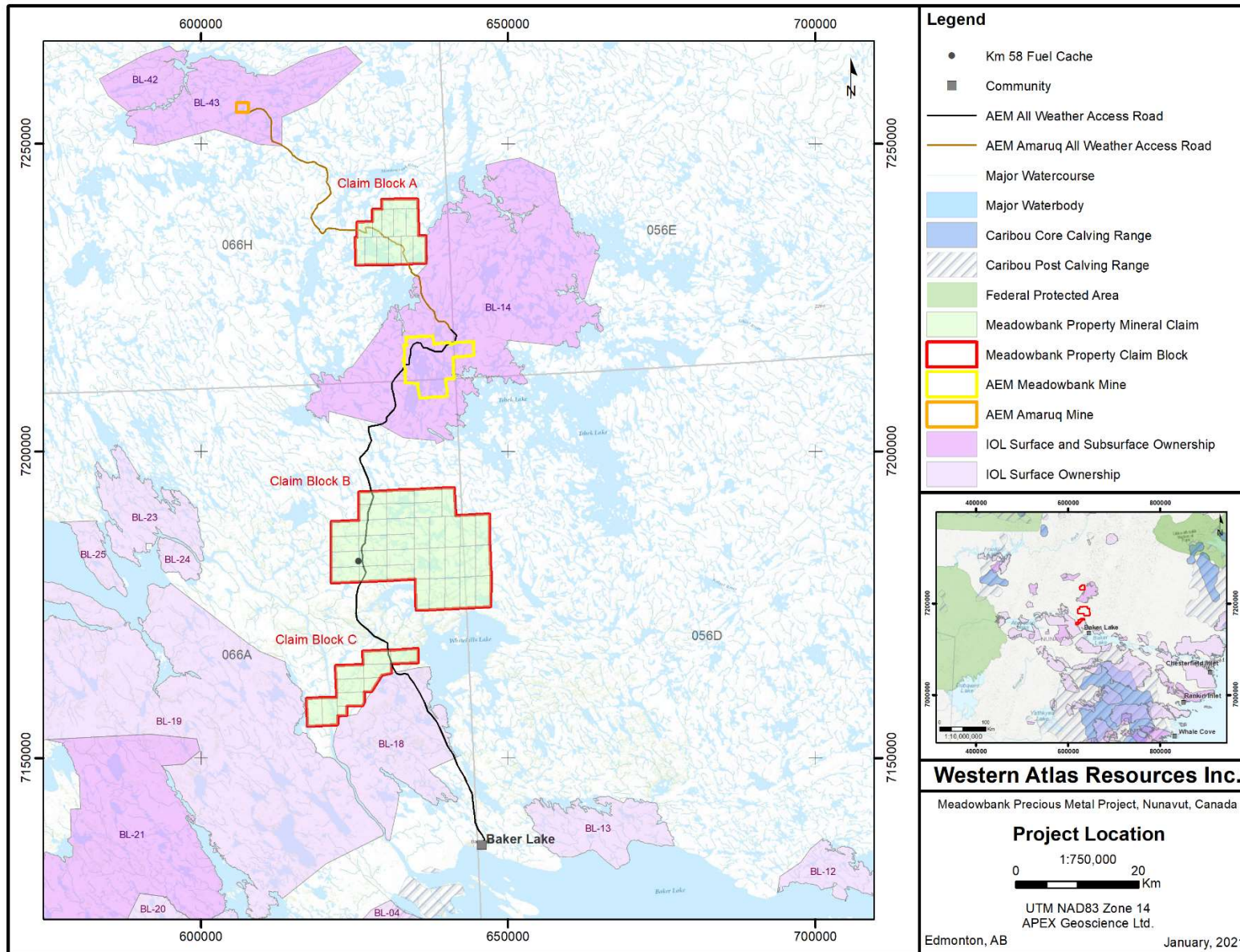
Medical emergencies can occur at any time and could be due to accidents or ill health.

Medical evacuations will be accomplished by means of fixed or rotary wing medevac to Yellowknife. First Aid Attendants at the site will be able to provide first aid and to treat more minor injuries. A satellite phone system will be installed at the Meadowbank Precious Metal Property in order to provide reliable telephone communications in the event of a medical emergency requiring consultation with outside medical help and/or requesting a plane for medevac.

See Appendix 1 for a list of emergency contacts for outside resources available for assistance with medical emergencies.

2.2.4 Extreme Weather

Weather extremes can include, but are not limited to heavy snowfall to blizzard conditions in winter, heavy rain causing flooding in summer and fog. Supervisory personnel will be appropriately experienced in order to be able to judge when conditions deteriorate to the extent that work should cease and crews return to camp. Radio and/or satellite phone contact will be available throughout the Property and thus senior supervisory personnel can be advised at any time of deteriorating weather situations and the status of crews working outside.



Appendix 1: Meadowbank Precious Metal Property Emergency Response Plan

FIRST RESPONSE PROTOCOL

5530 Nunavut Inc

Meadowbank Precious Metal Property

print this and post by all camp phones, in First Aid Tent and Office/Project Manager Tent, and inside every SAT phone case

In the event of an **EMERGENCY**, contact the First Aid Attendant and/or Project Supervisor immediately:

OVER THE RADIO: Call **“MEDIC MEDIC MEDIC”**

All radio communications must **STOP** except between the Project Supervisor/First Aid Attendant and the emergency scene.

ON THE PHONE:

Baker Lake Lodge: 1 (867) 793-2905

Worksite: 1 (778) 227-5395

or 1 (778) 227-5436

Satellite Phone: 8816 3262 9860

or 8816 3168 2358

**ALL WORK MUST STOP IN
THE EVENT OF AN EMERGENCY**

If instructed by the First Aid Attendant or Project Supervisor:

#1 - Call the relevant service:

| | | |
|-------------------|-------------------------------------|--|
| MEDICAL | Baker Lake Health Center | <i>1-867-793-2816</i> |
| RCMP | Baker Lake RCMP | <i>1-867-793-1111</i> |
| FIRE | Baker Lake Fire Hall | <i>1-867-793-2900</i> |
| SAR | Baker Lake Search and Rescue | <i>1-867-793-2503</i> <i>1-867-793-4512</i> |
| Helicopter | Darcy Taylor | <i>1-778-325-5193</i> |

#2 - Be Prepared to Provide:

1. **Your Name and Location:** Location in Lat/Long
 - a. Worksite **Lat: Long:**
 - b. Baker Lake Lodge **Lat: 64.320302 Long: -96.036234**
2. **Patient location** (if not in camp)
3. **Number of injured persons**
4. **Patient information for each injured person**
 - a) **Condition** Conscious / Unconscious
Nature of Injury
 - b) **Age / Sex of Patient**
 - c) **History** What happened?
When did it happen?
What remedial action has been taken so far?
 - d) **Any other relevant information that you know:**
Medical History (ie. is diabetic, etc)

REPORT BACK to First Aid Attendant

Obtain instructions from the Nurse or First Aid Attendant as to the need for a **MEDIVAC**

If Medivac is Required:

1. From the Field:

- a) The First Aid Attendant will go to the emergency scene with the first aid kit.
- b) The patient will be examined and supported while the Hospital is consulted for Medivac instructions.
- c) If instructed by the Nurse, the patient will be transferred directly to the nearest Hospital. If not, the patient will be transferred to the *Baker Lake Lodge* until further instructions are received.
- d) If a Medivac is required, someone from Emergency Services will be dispatched from Baker Lake via helicopter with all necessary equipment, while the First Aid Attendant on site supports the injured person(s) on site.

2. From *Baker Lake Lodge*

- a) The nearest Hospital will be consulted for Medivac instructions.
- b) Unless otherwise directed by the Nurse, the patient will be transported with the First Aid Attendant.
- c) Further Medivac decisions will be made by the Nursing Station.

Primary Medivac Vehicle:

Helicopter

Secondary Medivac Vehicle:

Truck

Where it becomes necessary to evacuate the worksite, the Project Supervisor shall make the decision to initiate a complete evacuation in accordance with the following procedure:

- 1) The decision to initiate a general evacuation of all personnel shall be accepted as a general stop work order, requiring all personnel to cease work immediately.
- 2) Communicate with and advise all field personnel to return to worksite and prepare to evacuate. The time of communication and name of each field crew communications operator must be recorded.
- 3) Should there be any personnel with whom contact cannot be made this must be noted and efforts made to locate and communicate with said personnel.
- 4) Notify the appropriate air service provider of the requirement for full evacuation with provision of the number of personnel involved.
- 5) Have all personnel congregate at a predetermined marshalling point. Depending upon the reason for evacuation and weather conditions, this may either be in the field, near the helipad or at the drill.
- 6) Notify the appropriate authorities (RCMP and Health Centre) in *Baker Lake* or wherever the evacuation destination is.
- 7) Should the evacuation require multiple flights ensure that each group of personnel has a designated supervisor with a satellite phone and sufficient survival gear. As the situation would not be considered a typical demobilization, personnel should not attempt to remove personal articles from camp, in consideration of evacuating the maximum number of people at the earliest opportunity.
- 8) All personnel should have clothing appropriate to the weather conditions.
- 9) Where possible, and if practical, all generators, stoves and gas cylinders should be shut off prior to departure.

CONTACT LIST (to print and post)

| CAMP CONTACTS | |
|---|---|
| <i>Pero Despotovic</i> | <i>1 (778) 227-5495</i> |
| <i>FA - Konstantin Lesnikov</i> | <i>1 (778) 227-5436</i> |
| <i>Keven Perot Servant</i> | <i>1 (891) 471 7571</i> |
| <i>SAT phone number</i> | <i>8816 3168 2358</i> |
| <i>Baker Lake Lodge</i> | <i>1 (867) 793-2905</i> |
| <i>Adjoining Camps:</i> | <i>Contact info – phone and location</i> |
| MEDICAL EMERGENCY CONTACTS | |
| HOSPITAL | |
| <i>Baker Lake Health Center</i> | <i>1-867-793-2816</i> |
| <i>Kivalliq Heath Center</i> | <i>1-867-645-8300</i> |
| RCMP | |
| <i>Baker Lake RCMP</i> | <i>1-867-793-1111 emergency</i> |
| <i>Baker Lake, Nu, X0C 0A0</i> | <i>1-867-793-0123 non-emergency</i> |
| SEARCH & RESCUE | |
| <i>Baker Lake Search and Rescue</i> | <i>1-867-793-2503 or 1-867-793-4512</i> |
| <i>Search and Rescue Nunavut Emergency Line</i> | <i>1-800-693-1666</i> |
| FIRE DEPARTMENT | |
| <i>Baker Lake Fire Hall</i> | <i>1-867-793-2900</i> |
| POISON CONTROL | <i>1-800-268-9017</i> |
| Emergency Measures 24 Hour TOLL FREE: | <i>1-800-693-1666</i> |
| Emergency Services Response 24 Hours: | <i>1-867-979-6262</i> |
| <i>Chief Inspector of Mines – Viktor Mubili</i> | <i>1-867-445-4426</i> |
| <i>Senior OHS Inspector – Sheena Jensen</i> | <i>1-867-920-3849</i> |
| <i>24 Hour Hotline for Serious Accidents</i> | <i>1-800-661-0792</i> |
| ENVIRONMENTAL | |
| <i>Government of Nunavut – General Inquiries</i> | <i>1-877-212-6438</i> |
| <i>Department of Economic Development and Transportation – Kivalliq</i> | <i>1-844-737-8627</i> |
| <i>Weather – Environment Canada</i> | https://weather.gc.ca/ |
| <i>Wildlife Office (Baker Lake)</i> | <i>1-867-793-2944</i> |

Effective January 1, 2021

10

| | |
|--|--|
| <i>Department of Environment - General Inquiries</i> | <i>1-867-975-7700</i> |
| <i>WSCC - Report a Claim</i> | <i>1-800-661-0792</i> |
| <i>WSCC - Iqaluit</i> | reportsnu@wscc.nu.ca |
| <i>Spills and Environmental Emergencies</i> | <i>1-867-920-8130</i> |
| EMERGENCY REPORTING AND SUPPORT | |
| <i>Chief Inspector of Mines – Cary Ingram</i> | <i>1-867-920-3805</i> |
| <i>Senior OHS Inspector – Viktor Mubili</i> | <i>1-867-445-4426</i> |
| <i>WSCC- Emergency and accident reporting Claims Mailing Address (Employers): Box 669, Iqaluit, NU X0A 0H0</i> | <i>1-800-661-0792</i> reportsnu@wscc.nu.ca |
| <i>Emergency Management – Nunavut</i> | <i>1-800-693-1666</i> |
| <i>Mental Health Nurse – Baker Lake</i> | <i>1-867-793-2816</i> |
| <i>Mental Health Outreach – Baker Lake</i> | <i>1-867-793-2085</i> |
| TRANSPORTATION | |
| <i>Helicopter Transport Services (HTCS)</i> | <i>1 (613) 295-2897</i> |
| <i>Air Ambulance</i> | <i>1-867-793-2816 (Health Centre)</i> |
| <i>Department of Economic Development and Transportation – Kivalliq</i> | <i>1-844-737-8627</i> |
| SPILLS AND DISASTER CONTACTS | |
| <i>Provincial Emergency Program (Spills)</i> | <i>1-867-920-8130</i> |
| <i>Environment Canada (Emergency Reports)</i> | <i>1-604-666-6100</i> |
| COMPANY CONTACT | |
| 5530 Nunavut Inc. <i>(subsidiary of Western Atlas Resources Inc.)</i> <i>666 Burrard Street, Suite 1700, Park Place Vancouver, BC V6C 2X8</i> | <i>Tel: 1 (604) 256 4777</i> <i>Tel: 1 (778) 389-7274</i> <i>www.westernar.com</i> |

***5530 Nunavut Inc - Meadowbank Precious Metal Property ERP
RECORD (to print and sign)***

Mine Emergency Response Plan RECORD

| | Yes | No |
|---|-----|----|
| Do you know where to find and use emergency equipment on site? | | |
| Do you know your specific role during an emergency? | | |
| Do you know where this ERP and the First Response Protocol can be found on site? | | |
| Do you know where to find contact information and communication devices? | | |
| Do you know how to use the communication devices? | | |
| Do you know who the designated First Aid Attendant is and where they are located? | | |
| Do your first aid supplies, attendants and facilities meet legislated requirements? | | |
| Have you read and understood the entirety of this emergency response plan? | | |

Project Supervisor or Crew Leader confirming *5530 Nunavut Inc - Meadowbank Precious Metal Property ERP*:

Name: _____

Signature: _____

Date: _____

Worker confirming they have read and understood the *5530 Nunavut Inc - Meadowbank Precious Metal Property ERP*:

Name: _____

Signature: _____

Date: _____