



## **NIRB Uuktuutinga Ihivriughikhamut #125588 Pistol Lake Project**

**Uuktuutinga Qanurittuq:** New

**Havaap Qanurittunia:** Mineral Exploration

**Uuktuutinga Ublua:** 2/24/2021 2:03:31 PM

**Period of operation:** from 0001-01-01 to 0001-01-01

**Piumayaat Angirutinga:** from 0001-01-01 to 0001-01-01

**Havauhikhaq Ikayuqtinga:** Denise Lockett  
lockett Consultation Services Inc.  
#341, 415 Commonwealth Road  
Kelowna B.C. V4V1P4  
Canada  
Hivayautit Nampanga:: 6043404756, Kayumiktukkut Nampanga::

# QANURITTUT

## Tukihiannaqtunik havaariya uyumayumik uqauhiuyun

Qablunaatitut: The Pistol Lake Property consists of two contiguous mineral leases named L-4240 and L-4241 for a total 700.63 hectares on Inuit Owned Subsurface Land (IOL) identified as parcel BB-39 managed by the Kitikmeot Inuit Association (KIA) on behalf of Nunavut Tunngavik Incorporated (NTI). Exploration activities proposed for the summer of 2021 includes construction and occupancy in a phased approach (construction, geologists for mapping etc., then drilling) starting at the beginning of July depending on weather. Camp will be a 16-person temporary camp to support prospecting, sampling, and 3000 meters of core drilling. This could be in operation from July 1, 2021 to October 1, 2021 depending on weather, and will be helicopter supported. Location of the temporary camp is expected to be in the area of historical exploration at 67° 02' 53.35 N 108° 47' 28.33 W to minimize wildlife and environmental disturbance and will be close enough to Knutsen Lake for camp and drill water use. It is proposed that the temporary camp and infrastructure will support multi-year exploration based on program results. Work proposed for 2021 is modest in size and duration and every effort will be made to employ local employees and to purchase local goods when it makes business sense. Leeward Capital Corp. commits to environmental stewardship and working with all regulators and stakeholders to ensure that the environment and communities in which they operate work together to are respected.

Uiviititut: La propriété de Pistol Lake figure sur la feuille de carte 76-N-2 du SNRC dans la région de Kitikmeot au Nunavut. La propriété est située à environ 14 km au sud-ouest de Portage Bay dans Bathurst Inlet, au Nunavut, et à 580 km de Yellowknife, dans les Territoires du Nord-Ouest. Les coordonnées géographiques générales de la propriété sont 67°02'55 N et 108°47'10 O. La propriété de Pistol Lake (la Propriété) a déjà été explorée entre 1964 et 1967 par Roberts Mining Co. et le Hope Bay Syndicate, puis de 1979 à 1984 par Goldfields Exploration Canada. D'autres travaux ont été réalisés entre 1984 et 1991 par Silver Hart Mines, puis par Chevron Minerals, et plus récemment, de 1991 à 2001, par Qikiqtaaluk Corporation (la société de développement de l'association inuite Qikiqitani basée à Iqaluit, au Nunavut) et Leeward Capital Corp. La propriété de Pistol Lake se compose de deux concessions minières contiguës, appelées L-4240 et L-4241, pour un total de 700,63 hectares sur des terres souterraines appartenant aux Inuits (TAI), identifiées comme la parcelle BB-39, gérées par la Kitikmeot Inuit Association (KIA) au nom de la Nunavut Tunngavik Incorporated (NTI). Les activités d'exploration proposées pour l'été 2021 comprennent la construction et l'occupation selon une approche progressive (construction, géologues pour la cartographie, etc., puis forage) à partir de début juillet en fonction des conditions météorologiques. Le camp consistera en un camp temporaire de 16 personnes pour soutenir la prospection, l'échantillonnage et 3000 mètres de carottage. Il pourrait être opérationnel du 1er juillet 2021 au 1er octobre 2021, selon les conditions météorologiques, et sera desservi par hélicoptère. Le camp temporaire devrait être situé dans la zone d'exploration historique, à 67° 02' 53,35 N 108° 47' 28,33 O, afin de réduire au minimum les perturbations de la faune et de l'environnement, et sera suffisamment proche du lac Knutsen pour que l'eau destinée au camp et au forage puisse être utilisée.

[illegible]

Inuinnaqtun: Tamna Pistol Lake Uyarakhiurvinga piqaqtuq malruuknik atayuq uyaraknik atuqtauyut atilik L-4240 unalu L-4241 atauttimut 700.63 hectares uumani Inuit Nanminiriyait Nunap Ataani Nunanga (IOL) ilitariyauyuq uuminnga nunannga BB-39 munariyauyuq uumannga Kitikmeot Inuit Katimayiinginnit (KIA) pitqutigiquplugu Nunavut Tunngavik Ilaliutihimayq (NTI). Uyarakhiurniqmut hulilukaarutingit piniaqtut auyami 2021mi ilaliutiyuq iglunik nappaqtiqluni hiniktarviniklu atauttiungittumik (iglunik nappaqtiqluni, uyagqanik

ihivriuqtiuyut nunaulyaliuriamikni hunavalukniklu, talvannga ikuutaliqlutik) pilihaaliqlutik atulihaaliqqat July hilaqqiumagumi. Hiniktarvingit inniaqtuq 16-nik inuknik tadjakaffuk uyarakhiurvikhaq ikayuriami uyarakhiurniq, naunaiyainiq, unalu 3000 miitanik ikuutaqtunik uuktuutigiyauyut. Uyarakhiuqpangniaqtut Taaqhivaliavia 1, 2021mit Tattiarnaqtuq 1, 2021milu hilaqqiumakpat, halikaaptakkuurniaqtut. Humi ittaakhaq tadjakaffuk uyarakhiurvinga ihumagiyauyuq inniaqtuq qangaraaluknitaq uyarakhiurviuyuq uumani 67° 02' 53.35 N 108° 47' 28.33 W ikikliyumiriami huradjat qimalattittailiniq avatingalu ahiruqtiriniq qaninniaqtuq Knutsen Lake-mut uyarakhiurvikhamut ikuutaqtut imanganik atuqtakhaminiklu. Ihumagiyauyuq tadjakaffuk uyarakhiurvinga unalu aulapkaitjutikhanik ikayurniaqtuq amihunik-ukiunik uyarakhiurniq piniaqtuq pinahurutimut qanurittaakhaanik . Havaakhaq ihumagiyauyuq uumani 2021 mikkauyuq aktikkulaanganit havaktillugilu tamaitalu akhuurutiginiaqtait havaktitaugiami nunamiknit havaktukhat niuviriamilu nunamikni tamayakhat taimaa niuvrutiliriniqmik maniliurutauyukhanik. Leeward Capital Kuapuriisinga akhuuqtuq avatinganut munariniq havaktullu tamainnik atan'nguyat tigumiaqtuuqatauyullu naunairiami avatinga nunangillu havaktut atauttikkut pimmariktumik piyut.

**Personnel**

Personnel on site: 16

Days on site: 60

Total Person days: 960

Operations Phase: from 2021-05-27 to 2021-06-02

Operations Phase: from 2021-06-03 to 2021-09-25

Post-Closure Phase: from to

## Hulilukaarutit

Inigiya	Hulilukaarut Qanurittuq	Nunannga Qanurittaakhaanik	Initurlinga qanuritpa	Initurlinga utuqqarnitat unaluuniit Ingilraaqnitat Uyarannguqtut akhuurninnga	Qanitqiyauyuq qanitqiamut nunallaat kitulluuniit ahiruqtailiyainnit nuna
Pistol Lake Project	Mineral Exploration	Inuit Owned Sub-Surface Lands	The Pistol Lake Property has previously been explored in 1964-67 by Roberts Mining Co. and the Hope Bay Syndicate, then in 1979-84 by Goldfields Exploration Canada. 1984-91 by Silver Hart Mines then Chevron Minerals and more recently from 1991 to 2001 by Qikiqtaaluk Corporation.	unknown	The Property is located approximately 14 km southwest of Portage Bay on Bathurst Inlet, Nunavut, and 317 km from Kugluktuk, and 580 km from Yellowknife, NWT

### Nunaliin Ilauyun, Aviktuqhimayuniitunullu Ikayuuhiarunguyun

Nunauyuq	Atia	Timiuyuq	Upluani Uqaqatigiyaungmata
Kugluktuk	Amanda Dumond	Kugluktuk HTO	2021-02-10

# Angiuttauvaktunik

Naunaiqlugu nunanga talvani havauhikhaq ittuq:

Kitikmeot

## Angiuttauvaktunik

Munariniqmut Ayuittiaqtuq	Angirutinga Qanurittuq	Tadja Qanurittaakhaanik	Ublua Tuniyauyuq/Uuktuqtuq	Umikvikhaa Ublua
Kitikmeot Inuit Katimayyingit	Land Use License KTL120B003	Active	2020-09-01	2021-08-31
Nunavut Imaligiyyit Katimayit	Water license for camp water use and waste disposal, as well as drilling	Not Yet Applied		
Kitikmeot Inuit Katimayyingit	Land Use License for camp and exploration activities	Not Yet Applied		

## Project transportation types

Transportation Type	Qanuq Atuqtauniarmangaa	Length of Use
Air	helicopter supported camp and drill program for mineral exploration	

## Project accomodation types

Temporary Camp

# Ihuaqutivaluin Atuqtauyukhan

Hanalrutit atuqtaunahuat (ukuallu ikuutat, pampiutainnik, tingmitinik, akhaluutunik, hunaluuniit)

Hanalrutit Qanurittuq	Qaffiuyut	Aktikkulaanga – Qanurittullu	Qanuq Atuqtauniarmangaa
A-Star BK helicopter	1	standard	drill move, fuel transport to drills, drillers transport to/from drills
Generator	1	12 KW	power for camp and equipment
incinerator	1	dual chambered	to incinerate camp waste
Core Saw	1	standard	to cut drill core for examination and logging
Heaters	12	standard	to heat tents
Freezers	2	standard	freeze food
Washer	1	standard	clothes cleaning
dryer	1	standard	drying clothes
refrigerator	1	standard	keeping food cool
Pacto Toilets	2	standard	human waste
stove/oven	1	stanfdard	cooking food
Electric Pump	1	50CC	pump water for camp use
Drill	1	Boyles	drill core for testing
Heater	1	Hermon Nelson	heating drill shack
generator	1	9 w	power for drill shack
pressure pump	1	standard	pump for drill water use
submersible pump	1	electric	for pumping water for drill water return
inline water heaters	2	standard	to keep drill water from freezing

## Qanurittuq Urhuqyuaq unalu Qayangnaqtut Hunavaluit Aturninnga

Qanurittuq urhuqyuaq hunavaluit aturninnga:	Urhuqyuaq Qanurittuq	Qaffiuyut qattaryut	Qattaryuk Aktikkulaanga	Atauttimut Qaffiuyut	Ilanga	Qanuq Atuqtauniarmangaa
Aviation fuel	fuel	90	205	18450	Liters	fuel for helicopter - transportation of drill crew and fuel
Diesel	fuel	170	205	34850	Liters	fuel for heaters
Propane	fuel	19	100	1900	Lbs	fuel for fridge, stove etc
Gasoline	fuel	2	205	410	Liters	equipment
Other	fuel	32	4	128	Liters	engine oil for generator, heli and drill
Other	fuel	8	20	160	Liters	engine oil for generators, heli and drill
Drilling Mud	hazardous	79	20	1580	Liters	AMC 1300 polymer biodegradable drilling mud
Calcium Chloride	hazardous	600	20	12000	Kg	thawing drill holes

Hydraulic oil	hazardous	32	20	640	Liters	bio hydraulic oil for drill due
---------------	-----------	----	----	-----	--------	---------------------------------

#### Imaqmik Aturninnga

Ubluq qanuraaluk (m3)	Aturumayain imavaluin utiqtittagaani qanuq	Atulirumayain imavaluin utiqtittagani humi
295	Generator powered pump with hose. Water use for camp and drill	nearby lake or water that does not freeze to the bottom. Likely Knutsen Lake

# Iqqakuq

## Ikkakunik Munakgiyauyunik

Havauhikhaq Hulilukaarut	Qanurittuq Iqqakut	Ihumagiyauyuq Qanuraaluktut Atuqtait	Qanuq Iqqakuurniarmangaa	Halummaqtirarnirutikhan piyutin
Camp	Ikulalaaqtun iqqakuuvaluin	unknown	All combustible waste will be burned in an incinerator	incinerated waste will be sealed in a 45 gallon drum for transport and disposal in Yellowknife at an authorized facility
Camp	Qirnarivyaktuq imaq	unknown but minimal	Grey water from the kitchen and shower will be contained in a sump	The sump will be buried at the end of the program.
Drilling	Hivuuranaqtun iqqakuuvaluin	unknown but minimal	All hazardous waste include used motor oil, will be collected for disposal	Hazardous waste including used motor oil will be collected for disposal in Yellowknife at an approved facility
Camp	Ikulalimanngittun iqqakuuvaluin	unknown	All non-combustible waste will be collected	Non-combustible waste will be transported to Yellowknife for disposal in an approved facility
Camp	Anaagun (inuin anaaguin)	approximately 3 45- gallon drums	Human waste from the Pacto toilets will be collected in sealed 45 gallon drums	Drums will be returned to Yellowknife for proper disposal

### Avatiliriniqmut Ayurhautingit:

The environmental impacts of the early stage proposed mineral exploration are expected to be minimal ground disturbance from the camp and drilling, are expected to be temporary in nature. The camp and the drill will be kept as clean as possible to avoid all unnecessary wildlife encounters. A wildlife monitor will be employed to monitor for any wildlife so that mitigation measures can take place including shutting down the drill if e.g., caribou are in the area. Contractors and employees will be instructed to not harass wildlife and keep the camp and its surroundings clean from debris.



# **Additional Information**

## **SECTION A1: Project Info**

## **SECTION A2: Allweather Road**

## **SECTION A3: Winter Road**

## **SECTION B1: Project Info**

The Pistol Bay Project is exploring for gold in an area that has previously been explored.

## **SECTION B2: Exploration Activity**

Exploration activities are expected to include basic mapping, sampling, followed by ground geophysics in order to pinpoint drill targets. Following ground geophysics, drilling is expected to take place.

## **SECTION B3: Geosciences**

Ground geophysics

## **SECTION B4: Drilling**

Drilling will likely take place once ground geophysics has taken place in order to more closely define targets.

## **SECTION B5: Stripping**

none

## **SECTION B6: Underground Activity**

none

## **SECTION B7: Waste Rock**

none

## **SECTION B8: Stockpiles**

none

## **SECTION B9: Mine Development**

## **SECTION B10: Geology**

## **SECTION B11: Mine**

## **SECTION B12: Mill**

## **SECTION C1: Pits**

## **SECTION D1: Facility**

## **SECTION D2: Facility Construction**

## **SECTION D3: Facility Operation**

## **SECTION D4: Vessel Use**

## **SECTION E1: Offshore Survey**

## **SECTION E2: Nearshore Survey**

## **SECTION E3: Vessel Use**

## **SECTION F1: Site Cleanup**

## **SECTION G1: Well Authorization**

## **SECTION G2: Onland Exploration**

## **SECTION G3: Offshore Exploration**

## **SECTION G4: Rig**

## **SECTION H1: Vessel Use**

## **SECTION H2: Disposal At Sea**

## **SECTION I1: Municipal Development**

### **Qanurittuq Ittunik Avatinga: Avatingalluanga**

Pistol Lake is located in the Kitikmeot Region, a 13,111 km<sup>2</sup> area in the westernmost part of the Territory (Encyclopaedia Britannica, 2020, para. 1). The majority of the region lies above the Arctic Circle. The Property is in the tundra. There are no roads to the property, however, access is possible during winter months via snowmobile. Five kilometers north of the property are two flat topped eskers which provide natural landing strips for small aircraft. Helicopters can be used to transport personnel and supplies to the camp. The property is located near Bathurst Inlet.

### **Qanurittuq Ittunik Avatinga: Inuuhimayunut Avatinga**

The Pistol Lake Property is characterized by knobby barren terrain with a relief of less than 250m. Drainages have developed along easily eroded shear zones with terrain defined by small to medium sized scarps, which typically trend north. There are boulder fields located throughout the Property.

### **Qanurittuq Ittunik Avatinga: Inungit-maniliurutingit Avatinga**

The proposed Project is located 341 KM from the Hamlet of Kugluktuk, and approximately 14 KM from Portage Bay in Bathurst Inlet. Bathurst Inlet does not have full time residents and it is unknown at this time if there will be any seasonal residents. Given the short duration and seasonal exploration activities, modest employment opportunities will be available, but a Wildlife Monitor will be hired to provide advice and safety to the operation.

## **Miscellaneous Project Information**

### **Naunaiyainiq ukuninnga Ayurhautingit unalu Piumayaat Ikikliyuumiutinahuarutit**

The impacts of the early stage exploration program are expected to be minimal and temporary. Every effort will be made to minimize the disturbance and the camp and drill will be kept clean to avoid all unnecessary wildlife interactions.

### **Tamatkiumayunik Ihuikgutivaktunik**

none.

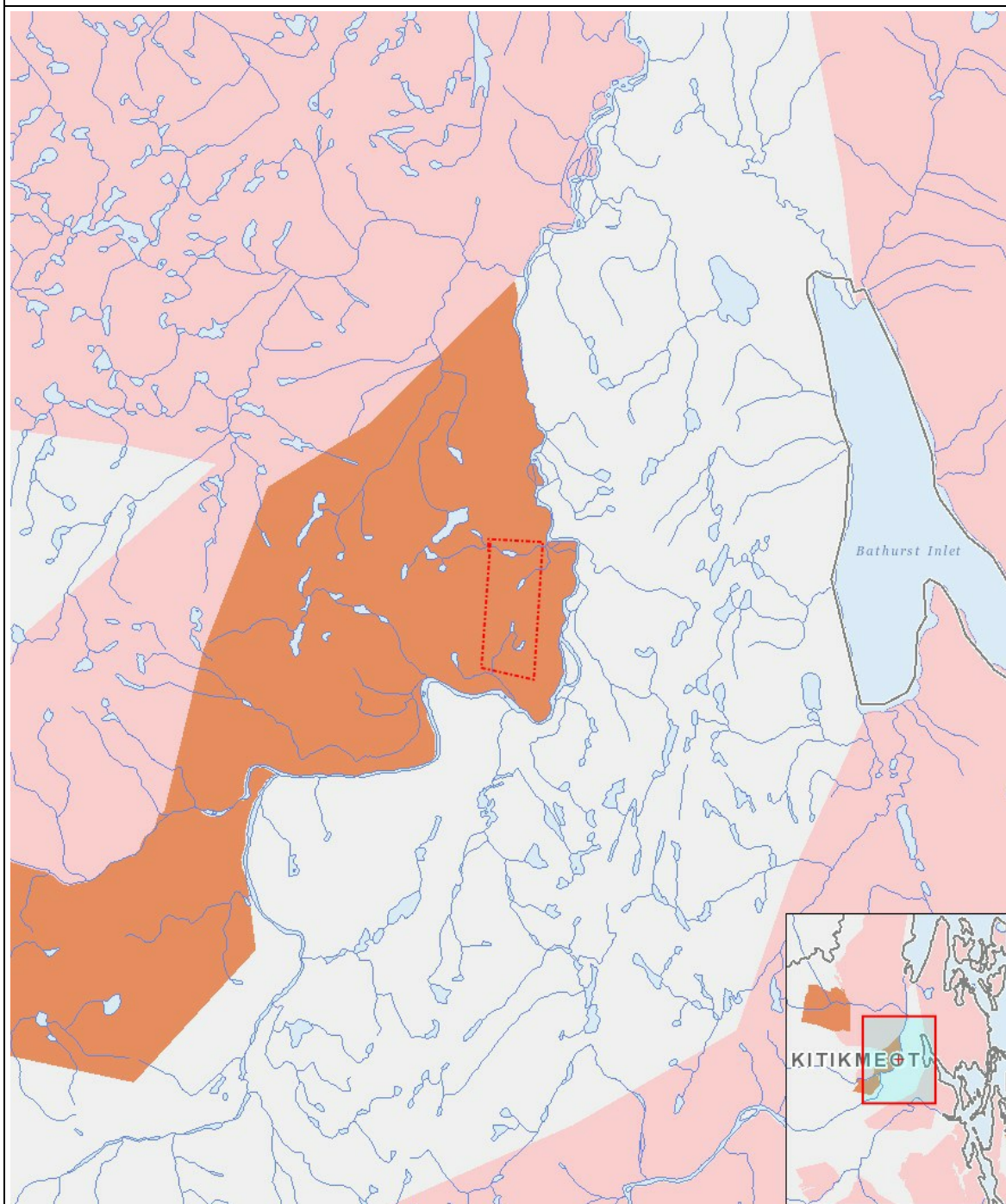
Impacts

Ilitariyauniq Avatiliriniqmut Ayurhautingit

	PHYSICAL																								
	Designated environmental areas																								
	Ground stability																								
	Permafrost																								
	Hydrology / Limnology																								
	Water quality																								
	Climate conditions																								
	Eskers and other unique or fragile landscapes																								
	Surface and bedrock geology																								
	Sediment and soil quality																								
	Tidal processes and bathymetry																								
	Air quality																								
	Noise levels																								
	BIOLOGICAL																								
	Vegetation																								
	Wildlife, including habitat and migration patterns																								
	Birds, including habitat and migration patterns																								
	Aquatic species, incl. habitat and migration/spawning																								
	Wildlife protected areas																								
	SOCIO-ECONOMIC																								
	Archaeological and cultural historic sites																								
	Employment																								
	Community wellness																								
	Community infrastructure																								
	Human health																								
Havakvinga																									
Mineral Exploration		-	-	N	-	P	-	N	N	N	-	U	M		N	N	N	-	-		U	P	-	-	-
Aulapkaininnga																									
-		-	-	-	-	-	-	-	-	-	-	-	-		-	-	-	-	-		-	-	-	-	-
Piiqtauniq																									
-		-	-	-	-	-	-	-	-	-	-	-	-		-	-	-	-	-		-	-	-	-	-

(P = Nakuuyuq, N = Nakuungittut unalu mikhilimaittuq, M = Nakuungittut unalu mikhittaaqtuq, U = Naluyauyuq)

# Havaariyauyukhamut Nayugaa



## List of Project Geometries

1	polyline	Pistol Lake Project
---	----------	---------------------