



NIRB Uuktuutinga Ihivriughikhamut #125585

Turquetil-Esker Drilling Program

Uuktuutinga Qanurittuq: New

Havaap Qanurittunia: Mineral Exploration

Uuktuutinga Ublua: 2/23/2021 1:06:50 PM

Period of operation: from 0001-01-01 to 0001-01-01

Piumayaat Angirutinga: from 0001-01-01 to 0001-01-01

Havauhikhaq Ikayuqtinga: MPH Consulting, Paul Sobie
MPH Consulting Limited
133 Richmond St. West, Suite 505
Toronto Ontario M5H 2L3
Canada
Hivayautit Nampanga:: 6479880930, Kayumiktukkut Nampanga:: 4163650930

QANURITTUT

Tukihiannaqtunik havaariya uyumayumik uqauhiuyun

Qablunaatitut: This proposed work program is for helicopter-supported drilling operations to be carried by MPH Consulting Limited on the Huckleberry-002 MEA at the Turquetil Gold Deposit, and at pending claim F46702 at the Esker Gold Occurrence. The drilling program will be supported from the Henik Lake Camp of Eskimo Point Lumber Supply/Airport Services Ltd. with all personnel and one helicopter based there (See General Location Map). Both areas have received multiple drilling programs in the past, most recently in 1993 at Turquetil, and 2004 at Esker. Past work was successful in finding gold both at surface and at depth through drilling. The present proposed program is designed to confirm, and hopefully expand upon, those identified zones of gold mineralization.

Uiviititut: Description sommaire du programme de forage Turquetil - Esker 2021-2022 Ce programme de travail proposé concerne les opérations de forage assistées par hélicoptère qui seront menées par MPH Consulting Limited sur le Huckleberry-002 MEA au gisement aurifère Turquetil, et à la réclamation en cours F46702 au site Esker Gold. Le programme de forage sera soutenu par le camp du lac Henik d'Eskimo Point Lumber Supply / Airport Services Ltd. avec tout le personnel et un hélicoptère basés là-bas (voir la carte générale de l'emplacement). Les deux zones ont fait l'objet de plusieurs programmes de forage dans le passé, le plus récemment en 1993 à Turquetil et en 2004 à Esker. Des travaux antérieurs ont permis de trouver de l'or à la fois en surface et en profondeur grâce au forage. Le programme proposé actuellement est conçu pour confirmer et, espérons-le, étendre ces zones identifiées de minéralisation aurifère. Zones d'opérations 2021-2022 (voir la carte de localisation détaillée des opérations de forage): M. John Tugak d'Arviat a un accord d'exploration minière («MEA») avec Nunavut Tunngavik Inc. («NTI») sur la propriété aurifère Turquetil Lake (entente Huckleberry-0002) qui est située à 138 km au nord-ouest d'Arviat et à 84 km au nord-est du camp du lac Henik dans la parcelle de LIO AR-16. M. Paul Sobie, président de MPH Consulting Limited, a un claim minier en cours (F46702) sur la rive est du lac South Henik, qui couvre le prospect aurifère Esker, situé à 10 km au sud-est du camp Henik dans la parcelle IOL AR-27. Licence d'utilisation des terres existante: Ces deux zones font partie du permis d'utilisation des terres KIA KVL120B03 accordé pour les levés géophysiques aéroportés, la prospection et le jalonnement, et sont en cours jusqu'au 29 septembre 2021. Une demande de modification de KVL120B03 pour inclure ce programme de forage sera soumise. Base opérationnelle: L'équipement de forage et de camp, les fournitures et le carburant seront transportés au camp Henik à partir de Churchill et Thompson. Toutes les conditions environnementales, d'entreposage de carburant et de protection du caribou du KVL120B03 seront en vigueur en tout temps. MPH et John Tugak veilleront à ce que le nombre maximum de travailleurs inuits locaux soit employé et à ce que les entreprises inuites locales soient utilisées pour le soutien pendant le travail sur le terrain. Le programme 2021-2022 sera financé par les communautés de Churchill et Thompson, au Manitoba, et du camp de Henik Lake, évitant ainsi les communautés du Nunavut à l'exception des vols d'approvisionnement hebdomadaires au départ d'Arviat, qui utiliseront des vols affrétés locaux à voilure fixe au Nunavut. société Ookpik Aviation Inc de Baker Lake. Si Arviat devenait ouvert après Covid 19, alors plus de soutien y sera dirigé. Opérations d'été 2021 (voir la localisation de Turquetil et Esker et les cartes détaillées des opérations): Une cache de carburant temporaire et un abri mobile d'urgence pour la nuit en cas de mauvais temps, seront installés sur chaque site de forage pendant les opérations. Le programme d'exploration 2021 devrait débuter à Turquetil pendant environ un mois du 15 juillet au 15 août, puis à Esker entre le 15 août et le 15 septembre 2021. Opérations printemps / été 2022: On prévoit que les opérations de 2022 comprendront des forages supplémentaires avec jusqu'à 2 appareils de forage et des levés géophysiques au sol dans les zones opérationnelles désignées. Les opérations sur les deux sites s'inscriraient dans la continuité des travaux accomplis au cours de l'été 2021. Les opérations ne reprendraient pas avant le 1er mars 2022 et s'arrêteraient pour la saison de mise bas du caribou, lorsque les opérations sont dans les zones de mise bas, conformément à KVL120B03 le 1er mai. Plus long terme: Les résultats du programme 2021-2022 guideront les travaux de forage en cours sur les deux sites. Le succès justifierait l'établissement d'un campement hivernal à Turquetil et d'autres travaux de forage, d'évaluation et d'environnement dans les années subséquentes pour déterminer en fin de compte s'il existe un ou plusieurs gisements d'or potentiellement viables.

[illegible]

Personnel

Personnel on site: 12

Days on site: 120

Total Person days: 1440

Operations Phase: from 2021-07-01 to 2021-07-02

Operations Phase: from 2021-07-01 to 2023-07-01

Closure Phase: from 2023-06-30 to 2023-07-01

Post-Closure Phase: from 2023-06-30 to 2023-07-01

Hulilukaarutit

Inigiya	Hulilukaarut Qanurittuq	Nunannga Qanurittaakhaanik	Initurlinga qanuritpa	Initurlinga utuqqarnitat unaluuniit Ingilraaqnitat Uyarannguqtut akhuurninnga	Qanitqiyauyuq qanitqiamut nunallaat kitulluuniit ahiruqtaliyainnit nuna
Turquetil Drilling Operations Area	Drilling	Inuit Owned Sub-Surface Lands	Site was drilled in 1976, 1978, 1988 and 1993.	unknown but will contact Prince of Wales Nunavut Archeological office for any information they have for the site.	Site is 140km northwest of Arviat. Site is approximately 30km from Qamanirjuaq CPMA.
Esker Drilling Operations Area	Drilling	Inuit Owned Surface Lands	Site was previously drilled in 1997, 2002 and 2004.	Unknown but will contact Prince of Wales Archeological office for any information they have for the site.	Site is 187km northwest of Arviat. Site is approximately 100km from Qamanirjuaq CPMA.

Nunaliin Ilauyun, Aviktuqhimayuniitunullu Ikayuuhiarunguyun

Nunauyuq	Atia	Timiuyuq	Upluani Uqaqatigiyaungmata
Arviat	Steve England	Hamlet of Arviat	2021-01-25

Angiuttauvaktunik

Naunaiqlugu nunanga talvani havauhikhaq ittuq:

Kivalliq

Angiuttauvaktunik

Munariniqmut Ayuittiaqtuq	Angirutinga Qanurittuq	Tadja Qanurittaakhaanik	Ublua Tuniyauyuq/Uuktuqtuq	Umikvikhaa Ublua
Kivalliq Inuit Katimayit	KIA Land Use Licence KVL120B03	Active	2020-07-17	2021-09-29

Project transportation types

Transportation Type	Qanuq Atuqtauniarmangaa	Length of Use
Air	helicopter for operations, fixed wing for support	

Project accomodation types

Alaanut,

Ihuaqutivaluin Atuqtauyukhan

Hanalrutit atuqtaunahuat (ukuallu ikuutat, pampiutainnik, tingmitinik, akhaluutinik, hunaluuniit)

Hanalrutit Qanurittuq	Qaffiuyut	Aktikkulaanga – Qanurittullu	Qanuq Atuqtauniarmangaa
Drill	1	4799 lbs	One helicopter-portable Multi-Power Discovery 1 drill rig supplied and operated by Foraco International SA (Kelowna Branch)
AStar350 B2 Helicopter	1	11m	Will be used to move the drill from site to site, as well crew shifts from Henik Lake Camp

Qanurittuq Urhuqyuaq unalu Qayangnaqtut Hunavaluit Aturninnga

Qanurittuq urhuqyuaq hunavaluit aturninnga:	Urhuqyuaq Qanurittuq	Qaffiuyut qattaryut	Qattaryuk Aktikkulaanga	Atauttimut Qaffiuyut	Ilanga	Qanuq Atuqtauniarmangaa
Aviation fuel	fuel	225	45	10125	Gallons	Helicopter Fuel
Diesel	fuel	90	45	4050	Gallons	Drilling fuel
none	hazardous	0	0	0	Kg	n/a
Propane	fuel	30	100	3000	Lbs	Drill rig use

Imaqmik Aturninnga

Ubluq qanuraaluk (m3)	Aturumayain imavaluin utiqittagaani qanuq	Atulirumayain imavaluin utiqittagani humi
40	temporary water pump	un-named lakes - see detailed operations figures for Turquetil and Esker

Iqqakuq

Ikkakunik Munakgiyauyunik

Havauhikhaq Hulilukaarut	Qanurittuq Iqqakut	Ihumagiyauyuq Qanuraaluktut Atuqtait	Qanuq Iqqakuurniarmangaa	Halummaqtirarnirutikhan piyutin
Drilling	Ikulalaaqtun iqqakuuvaluin	1 cubic metre per week	back hauled to Henik Lake Camp	incineration
Drilling	Qirnarivyaktuq imaq	<40 cubic metres per day	sump where particulate matter will settle	none
Drilling	Ikulalimanngittun iqqakuuvaluin	1 cubic meter per week	back-hauled to Arviat or Churchill/Thompson Mb.	commercial disposal

Avatiliriniqmut Ayurhautingit:

Minimal environmental impacts from drilling

Additional Information

SECTION A1: Project Info

SECTION A2: Allweather Road

SECTION A3: Winter Road

SECTION B1: Project Info

SECTION B2: Exploration Activity

SECTION B3: Geosciences

SECTION B4: Drilling

Provide the number of drill holes and depths (provide estimates and maximums where possible). Approximately 10-20 diamond drill holes. Each hole to a maximum depth of 250 metres. Discuss any drill additives to be used. See MSDS sheets attached. Describe method for dealing with drill cuttings. All drill sludges will be collected in a hand dug collection sump or natural depression located no less than 31 metres from the ordinary high water mark of any water body. These sludges will be allowed to settle. All land based artesian holes (drill holes which produce water after completion) will be documented, plugged and sealed with grout. As virtually 95% of the rock cored is brought to the surface and transported to camp (and then to the laboratory), the volume of drill waste created for a 100 meter long hole is only 0.14 cubic meters. Describe method for dealing with drill water. As above. Describe how drill equipment will be mobilized. The drill will be moved by helicopter between hole locations. All crews will also be shuttled daily between camp and work areas by helicopter. The foot print of each drill pad will be kept to a minimum size of approximately 10 metres by 10 metres. Pad construction will involve the placement of two parallel wooden timbers (6" x 6" x 10-12') onto the ground on which the frame of the drill and shack will be placed. The only ground clearing needed for this type of drill set-up will involve the removal of any larger, protruding boulders by hand. Absorbant matting will be used to collect any oils and lubricants which may be sourced from operating the drill. Drip trays will be used at all fueling and refueling areas. Once drilling at a particular site is completed the timbers will be removed for use at the next drill site. All used absorbant matting, garbage and fuel drums will be backhauled off the property and transported to Arviat and/or Churchill or Thompson, MB to be disposed of in an approved disposal facility. Describe how drill holes will be abandoned. All drill cuttings, water return and sludge will be disposed of in a properly constructed sump or natural depression no closer than 31 metres from the ordinary high water mark of any waterbody. Any drill collars that cannot be removed will be cut to ground level. All garbage and equipment and empty drums will be removed and the area reclaimed to as near as possible its original state.

SECTION B5: Stripping

SECTION B6: Underground Activity

SECTION B7: Waste Rock

SECTION B8: Stockpiles

SECTION B9: Mine Development

SECTION B10: Geology

SECTION B11: Mine

SECTION B12: Mill

SECTION C1: Pits

SECTION D1: Facility

SECTION D2: Facility Construction

SECTION D3: Facility Operation

SECTION D4: Vessel Use

SECTION E1: Offshore Survey

SECTION E2: Nearshore Survey

SECTION E3: Vessel Use

SECTION F1: Site Cleanup

SECTION G1: Well Authorization

SECTION G2: Onland Exploration

SECTION G3: Offshore Exploration

SECTION G4: Rig

SECTION H1: Vessel Use

SECTION H2: Disposal At Sea

SECTION I1: Municipal Development

Qanurittuq Ittunik Avatinga: Avatingalluanga

The Turquetil-Esker project is situated in barren lands or tundra along the northern reaches of the tree line and is underlain by permafrost. Relief is moderate, less than 20 metres. Vegetation consists of black spruce, dwarf shrubs, heaths, sedges, grasses, moss and lichens. In areas of better drainage the ground is covered by dwarf birch and willow shrubs however the majority of the property is vegetated by cotton grass tussocks and wet sedge meadows. Overall bedrock exposure is less than 5%, restricted to higher elevations and/or on the edges of the larger lakes. Outcrop surfaces are often ice scoured and not uncommonly polished. Frost-heaved bedrock and shattered sub-crop are common. Flat to undulating muskeg and boulder fields are frequent throughout the property. Continental glaciation has affected the entire region. Glacial deposits vary in thickness and consist of reworked till veneer, ground moraines, and flattened eskers. Glacial transport is generally east-south-east. Landforms, relief and drainage have been strongly influenced by the effects of several periods of glaciation, post-glacial fluvial activity and freeze/thaw processes. The area is generally covered by ice and snow from late September to early July. Summer is brief, extending only from mid-July to late August. Temperatures range from highs of approximately 25°C in summer to lows that can exceed -45°C in the winter, with average temperatures of 10°C and -30°C, respectively. Daylight varies from virtually 24 hours in summer to less than a few hours in the winter.

Qanurittuq Ittunik Avatinga: Inuuhi mayunut Avatinga

The natural vegetation comprises muskeg with scattered sedges. An extensive cover comprising crowberry, Labrador tea, lichen and moss is present in nearly all areas. The local fauna includes ptarmigan, caribou, wolves, foxes, arctic hares, wolverines, grizzly and polar bears, ground squirrels and the occasional muskox. Most of the larger lakes contain fish and support bird life.

Qanurittuq Ittunik Avatinga: Inungit-maniliurutingit Avatinga

As the project area is located on remote sites northwest of Arviat all socio-economic impacts will be positive. MPH will continue its practice of purchasing all goods and services from local supplies whenever possible. The camp will be serviced weekly from the community of Arviat. MPH will also encourage all contractors operating on the project to hire locally.

Miscellaneous Project Information

Naunaiyainiq ukuninnga Ayurhautingit unalu Piumayaat Iikiklyuumiutinahuarutit

MPH is fully committed to implementing its proposed exploration project on the Esker/Turquetil property in an environmentally responsible manner to protect and sustain the environmental and cultural resources of the project area. The exploration program described will have no to very low impact to the environment and/or wildlife. The project activities will be short lived (2-3 months) and be of a very localized nature. The drilling component will be short lived as the drills will only be on each site for 3-5 days and all sites will be restored as near as possible to their original state. Noise levels of the drill, generator, water pump, helicopter and supply planes will be the only activities that will be non-mitigatable. Congregations of wildlife are not expected in the area but will be avoided should any be encountered. Permafrost will not be harmed due to the timing of the project. All temporary structures (drill and pumps) will be set on timbers to avoid damage to the permafrost. Eskers and fragile landscapes will be avoided. Water usage will be minimal (~40 cubic metres/day) and restricted to drill use. Drill operations will be conducted in an environmentally friendly manner and fuel caches will be checked daily for potential leakage. Helicopter usage for purposes of supporting drilling operations is and has been the standard practice of many exploration companies now and in the past with no impact to wildlife or the environment. Pilots will be instructed to avoid wildlife during operations. All potential environmental effects associated with this proposed program are minor, localized effects which can be mitigated. No long term impacts to the environment or wildlife are expected to occur as a result of the implementation of this program. Timing of the proposed drilling will be after caribou calving season ends. The small quantities of benign drill cuttings (0.14 m³/ 100 m drilled) generated at each drill site will be deposited in natural depressions or sumps (2 X 3 X 1 meter) and will affect small areas of sparsely vegetated tundra within the footprint of the disturbed area at each drill site. All garbage, fuel drums and equipment will be removed from each drill site. There will be no deleterious effects to water quality due to the protection measures outlined by DIAND and the NWB which includes restrictions as to how close to water bodies the drill, sumps and fuel caches are allowed. Additionally, the following mitigation measures will be undertaken to reduce, control and/or eliminate all together, potential environmental effects. 1. Adhering to the Caribou Protection Measures; specifically not working in any core calving areas. 2. Avoiding low level flights over areas known for waterfowl nesting. 3. Adhering to the Recommended Environmentally Acceptable Minimum Flight Altitudes. 4. Equipping all water intake hoses with an appropriate screen mesh size to ensure no entrapment of fish. 5. Provide necessary controls to prevent sedimentation and/or erosion of water bodies or adjacent land. 6. Using only lake water for drilling operations. 7. All drill cuttings will be disposed of and contained in natural depressions or hand dug sumps located at least 31 meters from any high water mark such that the cuttings do not enter any water bodies. As virtually 95% of the rock cored is brought to the surface and transported to camp (and then to the laboratory), the volume of drill waste created for a 100 meter long hole is only 0.14 cubic meters. 8. All sumps will be backfilled and contoured when operations are complete. 9. Only environmentally acceptable and approved muds and additives (as per DIAND regulations) are to be used during drilling operations. 10. Drill holes to be plugged and permanently sealed if artesian flow is encountered. 11. All fuel caches will be located a minimum of 30 meters from the normal high water mark. Spill kits will be present at all fuel caches and drilling operations. 12. MPH possesses and maintains a current Emergency Response Plan including a Fuel Spill Contingency Plan that all employees and contractors are required to adhere to. These policies also include safety, emergency, fire and medi-vac procedures and are described in detail in MPH's Safety Manual/Field Guide.

Tamatkiumayunik Ihuikgutivaktunik

In total, the residual environmental effects of MPH's entire program on the Esker/Turquetil property are expected to be negligible. No other mineral exploration activities or other industrial development projects are currently known or planned for the area, which eliminates the potential for cumulative environmental effects. All potential environmental effects associated with this proposed program are minor, localized effects that can be mitigated. No significant residual impacts to the environment are expected to occur as a result of the implementation of this program. As a result there are no significant contributions resulting from the project that could be considered to be cumulative. However, while

individually no significant effects are anticipated, it is the role of the cumulative environmental effects assessment to consider the additive and synergistic effects of overall residual environmental effects, in combination with all existing or known planned activities within the vicinity of Turquetil-Esker project area. No other mineral exploration activities or other industrial development projects are currently known or planned for the area, which minimizes the potential for cumulative effects. No known environmental issues are known to exist in the project area from historic exploration campaigns. As a result, based on CEAA's premises, the proposed MPH's exploration program on the Turquetil-Esker project is not expected to result in a cumulative effect.

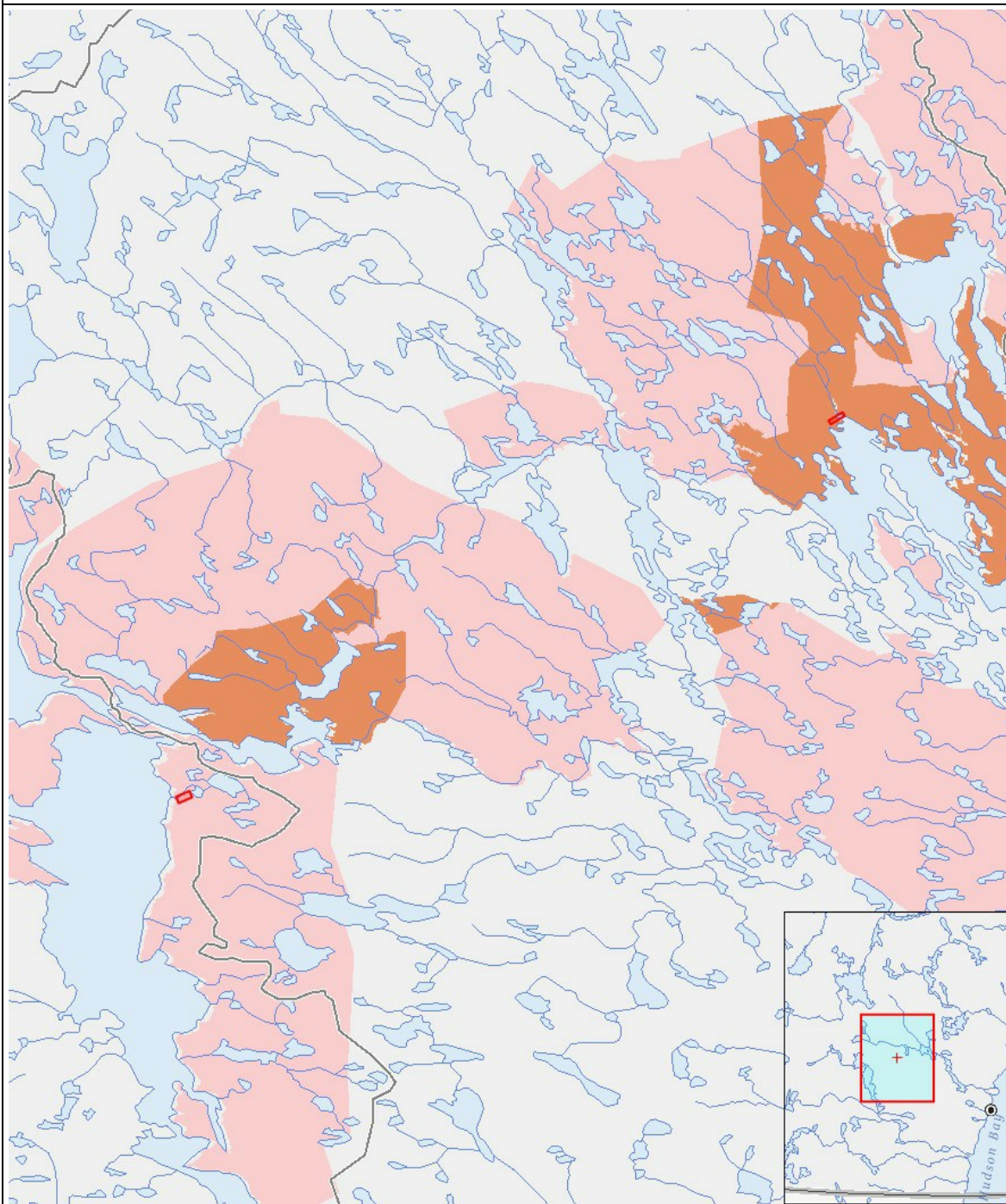
Impacts

Ilitariyauniq Avatiliriniqmut Ayurhautingit

	Havakvinga																								
		-	-	-	-	-	-	-	-	-	-	-	-		-	-	-	-	-		-	-	-	-	-
	Aulapkaininnga																								
Drilling		-	-	-	-	M	-	M	M	M	-	M	M		M	M	M	M	M		M	P	P	-	-
	Piiqtauniq																								
-		-	-	-	-	-	-	-	-	-	-	-	-		-	-	-	-	-		-	-	-	-	-

(P = Nakuuyuq, N = Nakuungittut unalu mikhilimaittuq, M = Nakuungittut unalu mikhittaaqtuq, U = Naluyauyuq)

Havaariyauyukhamut Nayugaa



List of Project Geometries

- | | | |
|---|---------|------------------------------------|
| 1 | polygon | Esker Drilling Operations Area |
| 2 | polygon | Turquetil Drilling Operations Area |