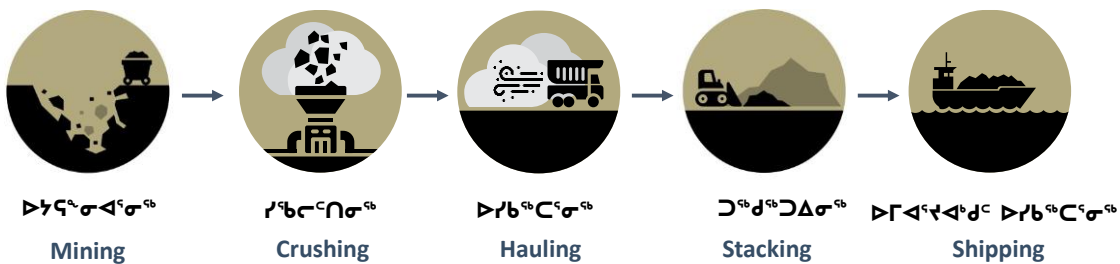


Introduction and Project Overview

ΔορἸσῖ ሷሬጐጐጐጐጐ ሷጐጐጐ
ጐጐጐጐጐጐጐ ሷጐጐጐ 2021
Public Hearing Iqaluit and Pond Inlet
April 2021

WHAT WE DO TODAY



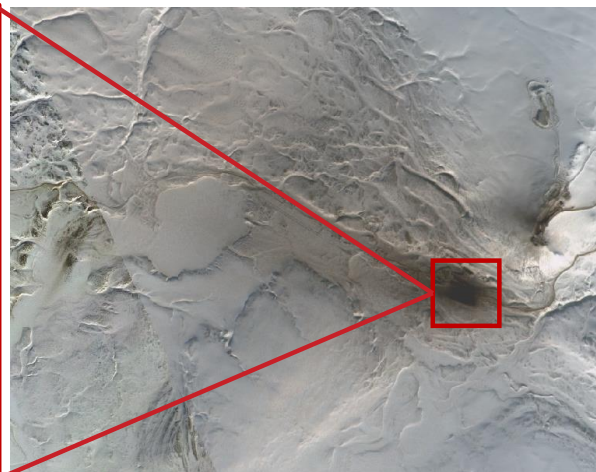


BILINGUAL RAIL EXPANSION VIDEO



www.baffinland.com

5

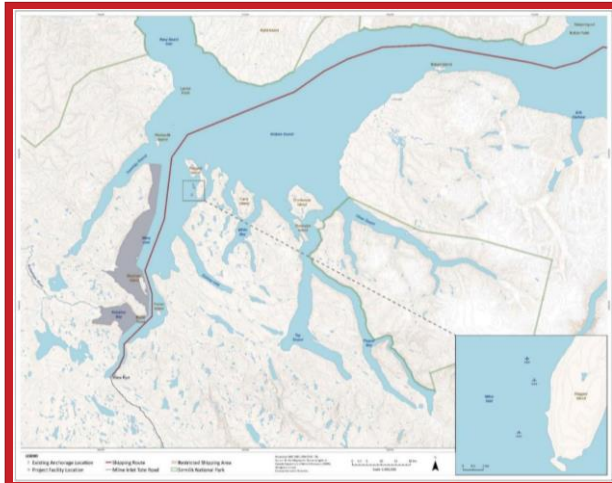


www.baffinland.com

6





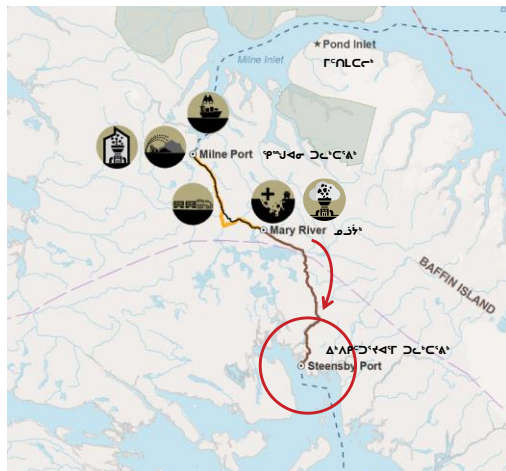


ᐱᓕᓕᓂᓂ ᐱᓕᓕᓂᓂ
Current Project



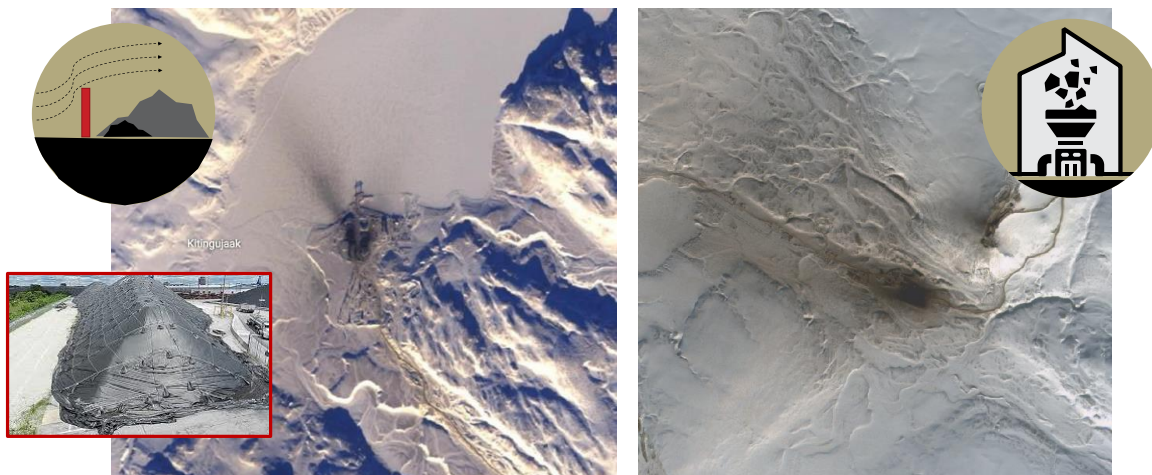
ᐱᓕᓕᓂᓂ ᐱᓕᓕᓂᓂ
Phase 2

ᐱᐅᓂᓐᑦ ᐱᐅᓂᓐᑦ FUTURE DEVELOPMENTS

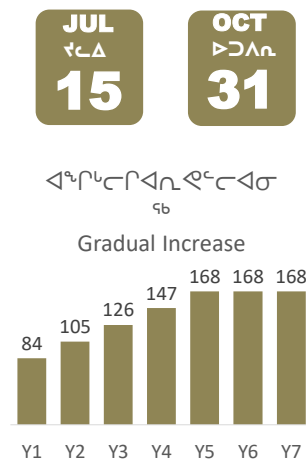


ፍጥነት ጥናት ላይ ሚና ሲጫወት

POTENTIAL SOLUTIONS



COMMITMENTS





ᑦᑎᑎᑕᑦᑲ POND INLET

\$400,000 ᐱᕐᓂᐱᕐᓂᑦᑕ ᐱᓗᐱᕐᓂᐱᕐᓂᑦᑕ
\$400,000 for the Harvesters
Enabling Program



\$200,000 ᓄᐱᕐᓂᑦ ᐱᕐᓂᐱᕐᓂᑦᑕ ᑦᑲᓗᓕᑦ
\$200,000 for Community
Based Monitoring



\$1.68 ᑦᑕᐱᕐ ᐱᕐᓂᐱᕐᓂᑦᑕ ᑕᑦᓂᓂᑦ
\$1.68 million per year to Tasiumait Working Group



\$200k for Country Food baseline study
Char monitoring programs
Caribou monitoring stations & 24 full-
time staff per year
Community Monitoring Coordinator



\$1.3 ᑦᑕᐱᕐ ᑦᑎᑎᑕᑦᑲ ᐱᕐᓂᐱᕐᓂᑦᑕ
\$1.3 million to Inuitmattali Hunters & Trappers
Organization

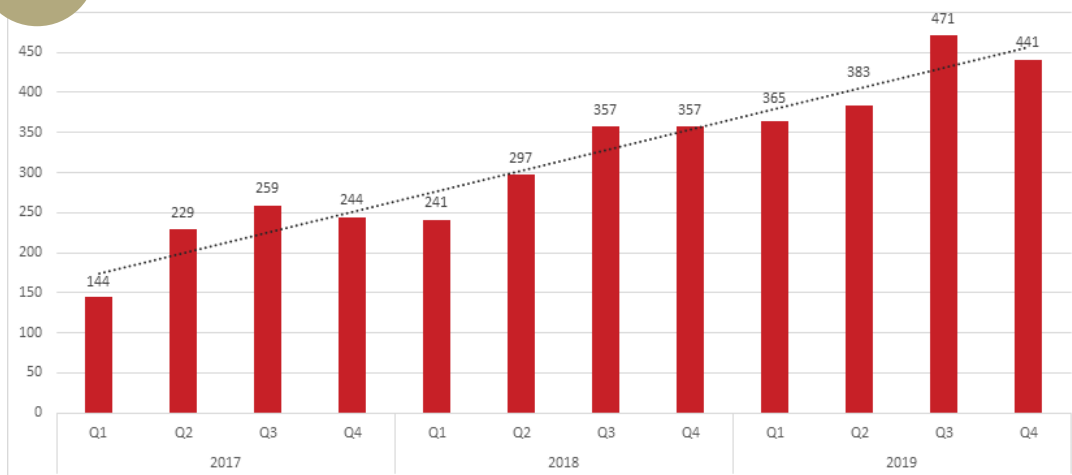
\$200,000 ᐱᕐᓂᐱᕐᓂᑦᑕ ᓂᑦᓂᐱᕐᓂᑦ ᑦᑲᓗᓕᑦ ᐱᕐᓂᐱᕐᓂᑦᑕ 24 ᐱᕐᓂᐱᕐᓂᑦᑕ ᓄᐱᕐᓂᑦ ᑦᑲᓗᓕᑦ



ᐱᕐᓂᐱᕐᓂᑦᑕ ᓄᐱᕐᓂᑦ ᐱᕐᓂᐱᕐᓂᑦᑕ ᐱᕐᓂᐱᕐᓂᑦᑕ
Enhanced community access to the Tote Road



Mary River Project Inuit Employment Trends



ሃክሳውን ምዕራብ ኃይኤርፍልጋዊናልጋዊናልጋዊናል ልክላል ልክላል ልክላል
 CREATING COMMUNITY HUBS FOR EMPLOYMENT AND TRAINING





   | www.baffinland.com

