



**Photo 1:** Pond CP3 - Looking northwest, bedrock overburden contact.



**Photo 2:** Pond CP3—Looking south, Berm CP3 on right, access ramp into pond.





**Photo 3:** Pond CP3 - Looking north, rockfill covered overburden slope in foreground.



**Photo 4:** Pond CP3 - Regraded ground between TSF and Pond CP3





**Photo 5:** Pond CP3 - Runoff/erosion channel into pond from north end of TSF drainage, located on east side of pond.



**Photo 6:** Pond CP3 - Runoff/erosion channel into pond from north end of TSF drainage, located on east side of pond.





**Photo 7:** Pond CP3 - CDW 150 pump.



**Photo 8:** Pond CP3 - Pump on ramp.





**Photo 9:** Pond CP3 - Rockfill covered overburden slope.



**Photo 10:** Berm CP3 - Berm crest, looking north. Undulations in crest 0.3 to 0.5 m.



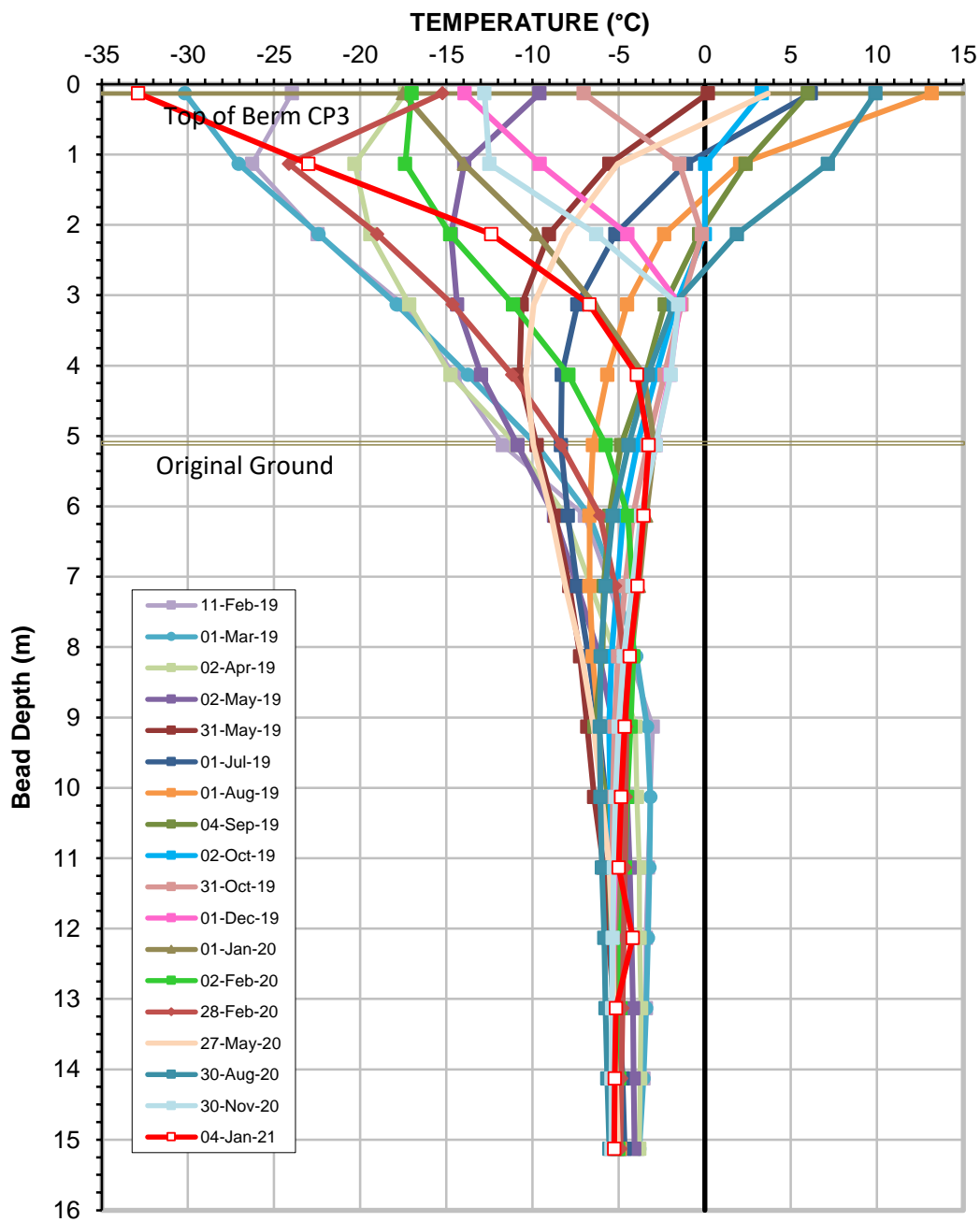


**Photo 11:** Berm CP3 - Downstream slope against lake B26.



**Photo 12:** Berm CP3 - ground between the Dike toe and water collection channel, settlement and subsidence

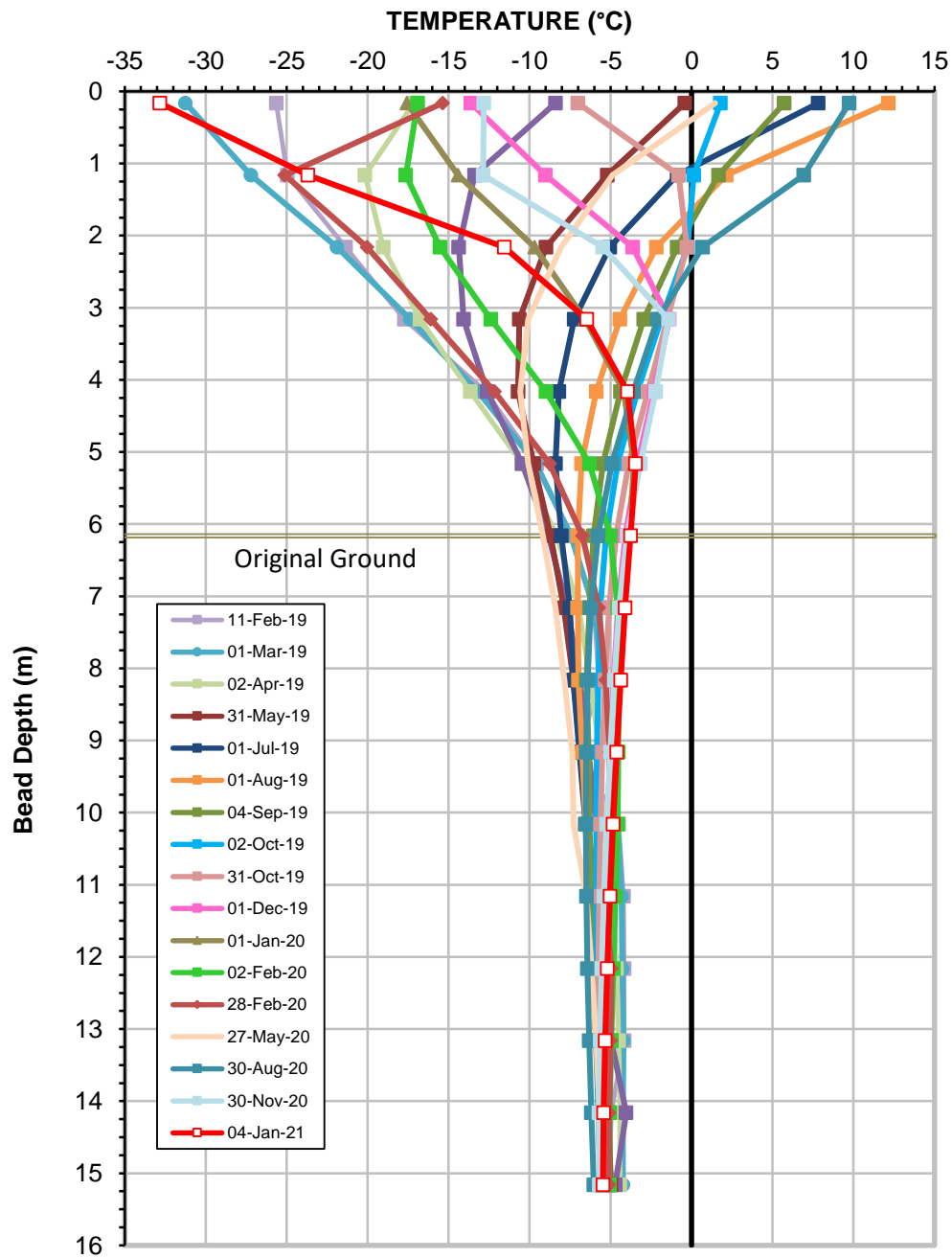




**Ground Temperature Profile for Cable GTC-01  
Berm CP3**

Serial No.: 2644  
Date Installed: February 11, 2019

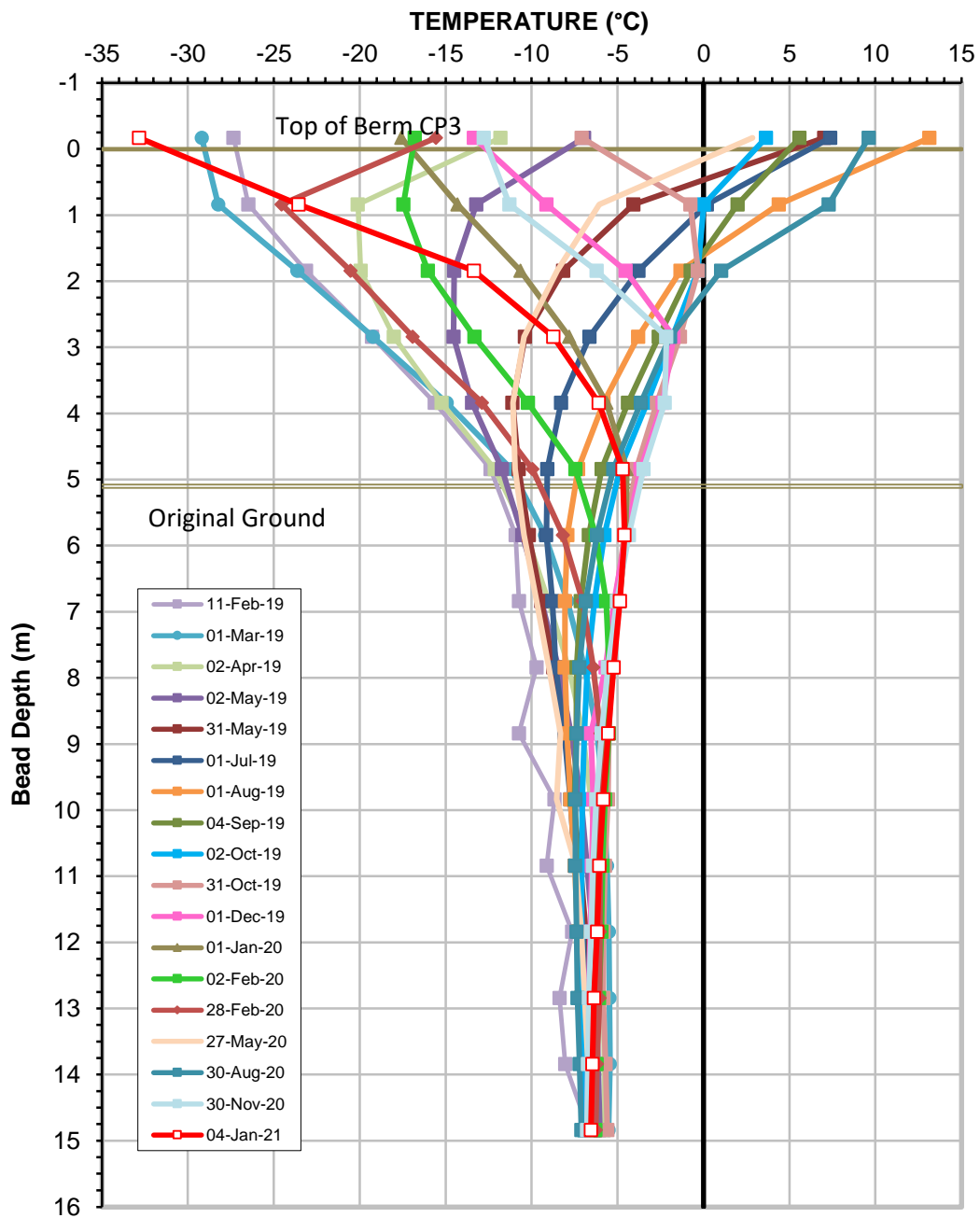




**Ground Temperature Profile for Cable GTC-02  
Berm CP3**

Serial No.: 2645  
Date Installed: February 11, 2019





**Ground Temperature Profile for Cable GTC-03  
Berm CP3**

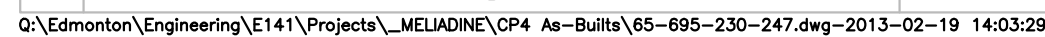
Serial No.: 2644  
Date Installed: February 11, 2019



## APPENDIX D

### POND CP4, CHANNELS, AND BERMS





## NOTES GÉNÉRALES / GENERAL NOTES

1. ASSUMED CONSTRUCTION SCHEDULE WINTER 2018 / 2019
2. ASSUMED OPERATION SCHEDULE STARTING TO STORE WATER FROM FRESHET OF 2019.
3. POND DESIGN CAPACITY IS BASED ON STORING 3 OUT OF 7 FRESHET WATER UNDER 1:100 WEY YEAR CONDITION.
4. THE MAXIMUM ALLOWABLE OPERATING WATER LEVEL IS AT ELEVATION 63.0 m UNDER THE DESIGN IDF CONDITION.
5. MATERIAL PLACEMENT AND FOUNDATION PREPARATION SHOULD BE IN ACCORDANCE WITH THE REQUIREMENTS OF GEOTECHNICAL CONSTRUCTION / MATERIAL SPECIFICATIONS (TETRA TECH 2018).

TEL QUE CONSTRUIT  
AS BUILT

DATE : 2019-12-0

L'INFORMATION CI-DESSOUS EST LA PROPRIÉTÉ DE AONCO EAGLE LTD. [IL DOIT ÊTRE RETOURNÉ SUR DEMANDE, SANS AUTORISATION ÉCRITE, PRÉALABLE, TOUTE TRANSMISSION DE COPIES À AUTRUI ET TOUTE UTILISATION AUTRE QUE CELLE POUR LAQUELLE L'INFORMATION EST PRIÉE] SONT INTERDITES. © AONCO EAGLE LTD.

THE INFORMATION HERE ON IS THE PROPERTY OF AONCO EAGLE LTD. AND MUST BE RETURNED UPON REQUEST, WITHOUT WRITTEN PERMISSION, ANY COPYING TRANSMISSION TO OTHERS AND ANY USE EXCEPT THAT FOR WHICH IT IS LOANED ARE PROHIBITED.

© AONCO EAGLE LTD.

## DESSINS EN RÉFÉRENCE / REFERENCE DRAWINGS

TITRE / TITLE	# DWG
--	--
--	--
--	--
--	--
--	--

**AGNICO EAGLE**

1	2019-12-04	RECORD DRAWINGS	EL	WTH	
0	2018-06-21	ISSUED FOR CONSTRUCTION	HX	WTH	
A	2018-05-29	ISSUED FOR REVIEW	HX	WTH	
REV	DATE	DESCRIPTION	P/R /RY	APP.	CLIENT

## REVISIONS



PERMIT TO PRACTICE  
TETRA TECH CANADA INC

Signature 

Date October 4, 2019

PERMIT NUMBER: P 018  
NT/NJ Association of Professionals

Engineers and Geoscientists

TITRE / TITLE
---------------

AS-BUILT REPORT FOR CHANNEL 4,

POND CP4, AND BERM CP4

CP4 AND CP4 THERMAL PROTECTION BERM

LAYOUT PLAN

1998, 1999, 2000, 2001, 2002, 2003, 2004, 2005, 2006, 2007, 2008, 2009, 2010, 2011, 2012, 2013, 2014, 2015, 2016, 2017, 2018, 2019, 2020, 2021, 2022, 2023, 2024, 2025, 2026, 2027, 2028, 2029, 2030, 2031, 2032, 2033, 2034, 2035, 2036, 2037, 2038, 2039, 2040, 2041, 2042, 2043, 2044, 2045, 2046, 2047, 2048, 2049, 2050, 2051, 2052, 2053, 2054, 2055, 2056, 2057, 2058, 2059, 2060, 2061, 2062, 2063, 2064, 2065, 2066, 2067, 2068, 2069, 2070, 2071, 2072, 2073, 2074, 2075, 2076, 2077, 2078, 2079, 2080, 2081, 2082, 2083, 2084, 2085, 2086, 2087, 2088, 2089, 2090, 2091, 2092, 2093, 2094, 2095, 2096, 2097, 2098, 2099, 2100, 2101, 2102, 2103, 2104, 2105, 2106, 2107, 2108, 2109, 2110, 2111, 2112, 2113, 2114, 2115, 2116, 2117, 2118, 2119, 2120, 2121, 2122, 2123, 2124, 2125, 2126, 2127, 2128, 2129, 2130, 2131, 2132, 2133, 2134, 2135, 2136, 2137, 2138, 2139, 2140, 2141, 2142, 2143, 2144, 2145, 2146, 2147, 2148, 2149, 2150, 2151, 2152, 2153, 2154, 2155, 2156, 2157, 2158, 2159, 2160, 2161, 2162, 2163, 2164, 2165, 2166, 2167, 2168, 2169, 2170, 2171, 2172, 2173, 2174, 2175, 2176, 2177, 2178, 2179, 2180, 2181, 2182, 2183, 2184, 2185, 2186, 2187, 2188, 2189, 2190, 2191, 2192, 2193, 2194, 2195, 2196, 2197, 2198, 2199, 2200, 2201, 2202, 2203, 2204, 2205, 2206, 2207, 2208, 2209, 2210, 2211, 2212, 2213, 2214, 2215, 2216, 2217, 2218, 2219, 2220, 2221, 2222, 2223, 2224, 2225, 2226, 2227, 2228, 2229, 2230, 2231, 2232, 2233, 2234, 2235, 2236, 2237, 2238, 2239, 2240, 2241, 2242, 2243, 2244, 2245, 2246, 2247, 2248, 2249, 2250, 2251, 2252, 2253, 2254, 2255, 2256, 2257, 2258, 2259, 2260, 2261, 2262, 2263, 2264, 2265, 2266, 2267, 2268, 2269, 2270, 2271, 2272, 2273, 2274, 2275, 2276, 2277, 2278, 2279, 2280, 2281, 2282, 2283, 2284, 2285, 2286, 2287, 2288, 2289, 2290, 2291, 2292, 2293, 2294, 2295, 2296, 2297, 2298, 2299, 2300, 2301, 2302, 2303, 2304, 2305, 2306, 2307, 2308, 2309, 2310, 2311, 2312, 2313, 2314, 2315, 2316, 2317, 2318, 2319, 2320, 2321, 2322, 2323, 2324, 2325, 2326, 2327, 2328, 2329, 2330, 2331, 2332, 2333, 2334, 2335, 2336, 2337, 2338, 2339, 2340, 2341, 2342, 2343, 2344, 2345, 2346, 2347, 2348, 2349, 2350, 2351, 2352, 2353, 2354, 2355, 2356, 2357, 2358, 2359, 2360, 2361, 2362, 2363, 2364, 2365, 2366, 2367, 2368, 2369, 2370, 2371, 2372, 2373, 2374, 2375, 2376, 2377, 2378, 2379, 2380, 2381, 2382, 2383, 2384, 2385, 2386, 2387, 2388, 2389, 2390, 2391, 2392, 2393, 2394, 2395, 2396, 2397, 2398, 2399, 2400, 2401, 2402, 2403, 2404, 2405, 2406, 2407, 2408, 2409, 2410, 2411, 2412, 2413, 2414, 2415, 2416, 2417, 2418, 2419, 2420, 2421, 2422, 2423, 2424, 2425, 2426, 2427, 2428, 2429, 2430, 2431, 2432, 2433, 2434, 2435, 2436, 2437, 2438, 2439, 2440, 2441, 2442, 2443, 2444, 2445, 2446, 2447, 2448, 2449, 2450, 2451, 2452, 2453, 2454, 2455, 2456, 2457, 2458, 2459, 2460, 2461, 2462, 2463, 2464, 2465, 2466, 2467, 2468, 2469, 2470, 2471, 2472, 2473, 2474, 2475, 2476, 2477, 2478, 2479, 2480, 2481, 2482, 2483, 2484, 2485, 2486, 2487, 2488, 2489, 2490, 2491, 2492, 2493, 2494, 2495, 2496, 2497, 2498, 2499, 2500, 2501, 2502, 2503, 2504, 2505, 2506, 2507, 2508, 2509, 2510, 2511, 2512, 2513, 2514, 2515, 2516, 2517, 2518, 2519, 2520, 2521, 2522, 2523, 2524, 2525, 2526, 2527, 2528, 2529, 2530, 2531, 2532, 2533, 2534, 2535, 2536, 2537, 2538, 2539, 2540, 2541, 2542, 2543, 2544, 2545, 2546, 2547, 2548, 2549, 2550, 2551, 2552, 2553, 2554, 2555, 2556, 2557, 2558, 2559, 2560, 2561, 2562, 2563, 2564, 2565, 2566, 2567, 2568, 2569, 2570, 2571, 2572, 2573, 2574, 2575, 2576, 2577, 2578, 2579, 2580, 2581, 2582, 2583, 2584, 2585, 2586, 2587, 2588, 2589, 2590, 2591, 2592, 2593, 2594, 2595, 2596, 2597, 2598, 2599, 2600, 2601, 2602, 2603, 2604, 2605, 2606, 2607, 2608, 2609, 2610, 2611, 2612, 2613, 2614, 2615, 2616, 2617, 2618, 2619, 2620, 2621, 2622, 2623, 2624, 2625, 2626, 2627, 2628, 2629, 2630, 2631, 2632, 2633, 2634, 2635, 2636, 2637, 2638, 2639, 2640, 2641, 2642, 2643, 2644, 2645, 2646, 2647, 2648, 2649, 2650, 2651, 2652, 2653, 2654, 2655, 2656, 2657, 2658, 2659, 2660, 2661, 2662, 2663, 2664, 2665, 2666, 2667, 2668, 2669, 2670, 2671, 2672, 2673, 2674, 2675, 2676, 2677, 2678, 2679, 26

DESSINÉ PAR	DATE
-------------	------

DRAWN BY	EL	2019-07-31
----------	----	------------

VERIFIÉ PAR CHECKED BY	HY	2019-07-31
---------------------------	----	------------

DATE OF	2019-07-31
ISSUED BY	

APPROUVE PAR APPROVED BY	WTH	2019-07-31
-----------------------------	-----	------------

ÉCHELLE	DATE	

SCALE	1:750	2019-07-31
-------	-------	------------

NO. DESSIN DRAWING NO.
---------------------------

65-695-230-247

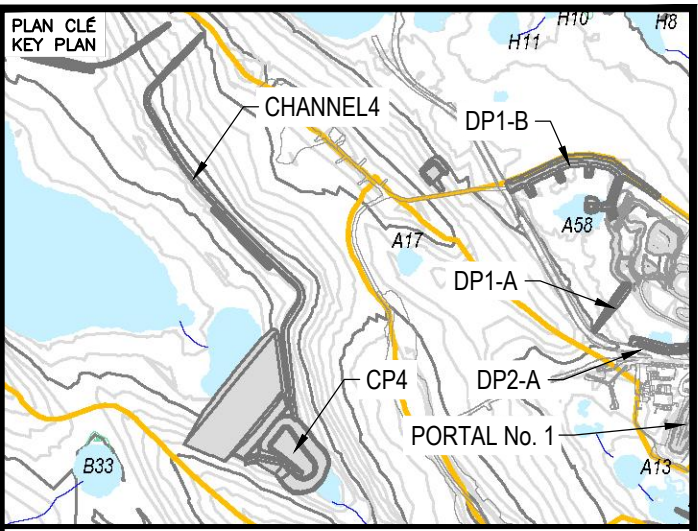
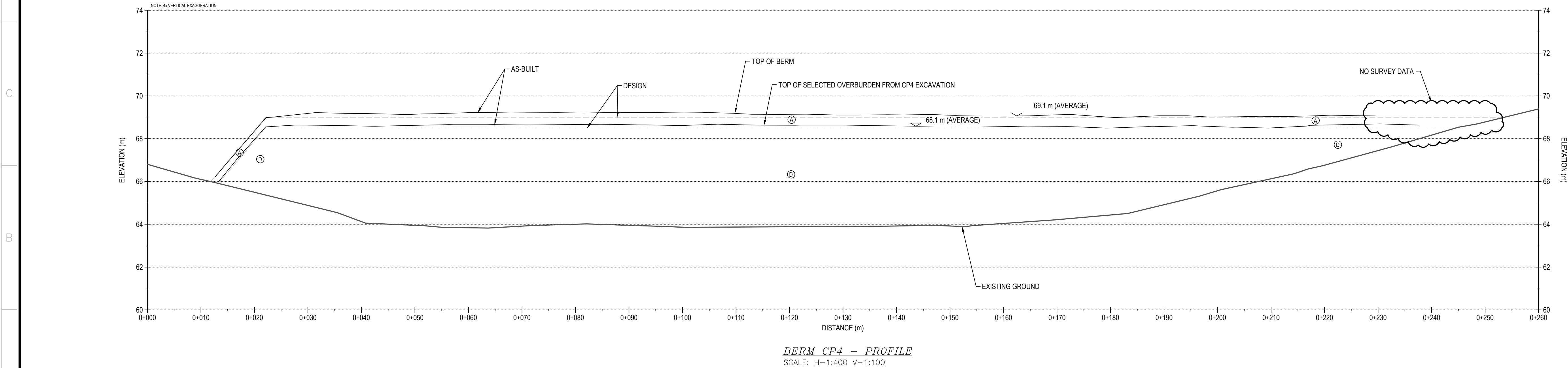
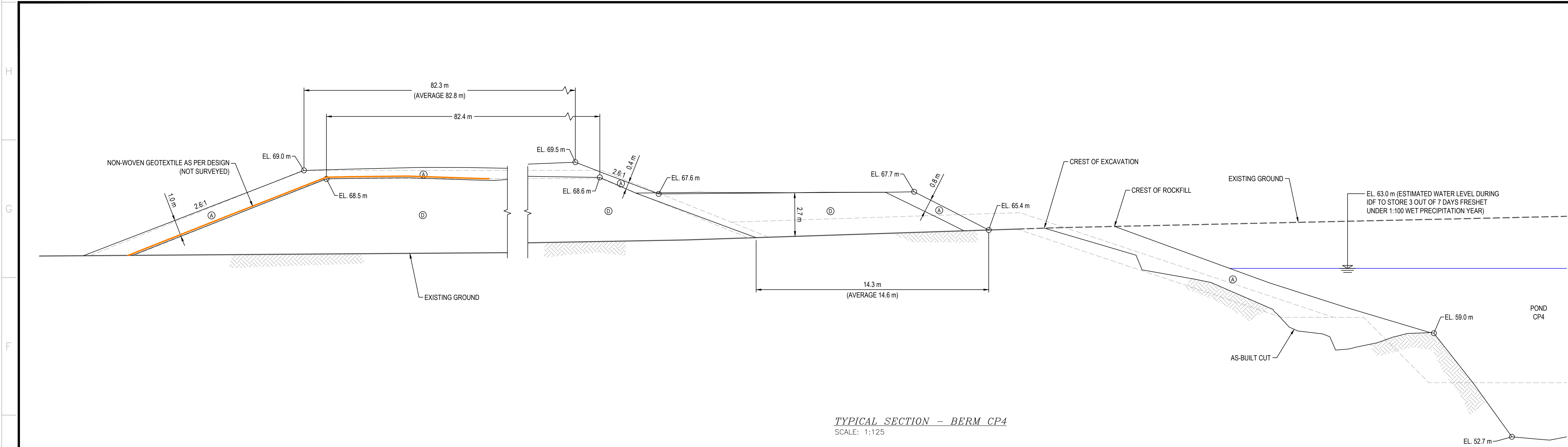
NO. PROJET	REVISION	FEUILLE / SHT

PROJECT NO.	REVISION	DATE, BY
		1 /

6515	1	1 / 9
------	---	-------


FILE NO. 65-695-230-247.dwg



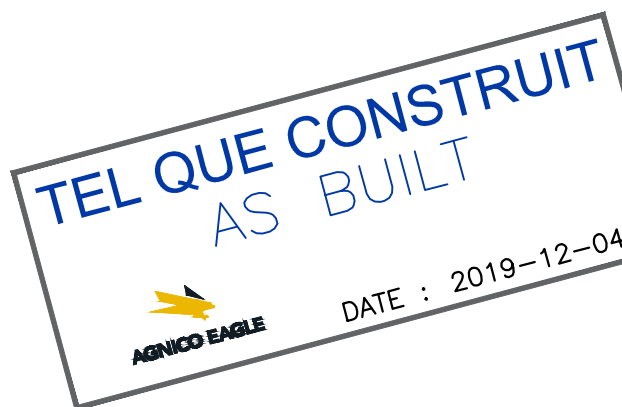


NOTES GÉNÉRALES / GENERAL NOTES

1. ASSUMED CONSTRUCTION SCHEDULE WINTER 2018 / 2019
2. ASSUMED OPERATION SCHEDULE STARTING TO STORE WATER FROM FRESHET OF 2019.
3. POND DESIGN CAPACITY IS BASED ON STORING 3 OUT OF 7 FRESHET WATER UNDER 1:100 WET YEAR CONDITION.
4. THE MAXIMUM ALLOWABLE OPERATING WATER LEVEL IS AT ELEVATION 63.0 m UNDER THE DESIGN IDF CONDITION. MATERIAL PLACEMENT AND FOUNDATION PREPARATION SHOULD BE IN ACCORDANCE WITH THE REQUIREMENTS OF GEOTECHNICAL CONSTRUCTION / MATERIAL SPECIFICATIONS (TETRA TECH 2018).

LEGEND

- (A) CLEAN ROCKFILL FROM EXCAVATION (600 mm MINUS)
- (B) OVERBURDEN FROM EXCAVATION (300 mm MINUS)



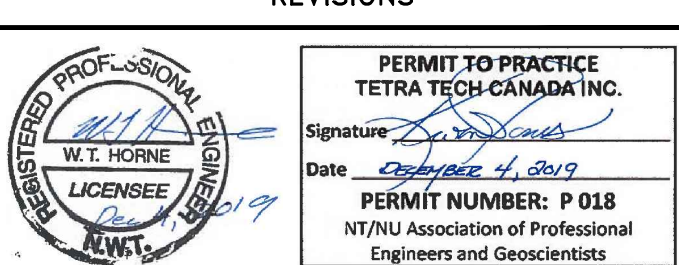
L'INFORMATION CONTENUE EST LA PROPRIÉTÉ DE AGNICO EAGLE LTD. ET DOIT ÊTRE RETENUE SANS RÉPONSE, SANS AUTANT QUE POSSIBLE, SANS RÉPONSE DE AGNICO EAGLE LTD. L'INFORMATION CONTENUE EST LA PROPRIÉTÉ DE AGNICO EAGLE LTD. ET DOIT ÊTRE RETENUE SANS RÉPONSE, SANS AUTANT QUE POSSIBLE, SANS RÉPONSE DE AGNICO EAGLE LTD.

DESSINS EN RÉFÉRENCE / REFERENCE DRAWINGS

TITRE / TITLE	# DWG
---	---
---	---
---	---
---	---
---	---



REV.	DATE	DESCRIPTION	PAR/REV	APP.	CLIENT
1	2019-12-04	RECORD DRAWINGS	EL	WTH	
2	2018-06-21	ISSUED FOR CONSTRUCTION	HX	WTH	
3	2018-05-29	ISSUED FOR REVIEW	HX	WTH	



TITRE / TITLE  
AS-BUILT REPORT FOR CHANNEL 4,  
POND CP4, AND BERM CP4  
  
CP4 TYPICAL SECTION AND  
CP4 THERMAL PROTECTION BERM PROFILE

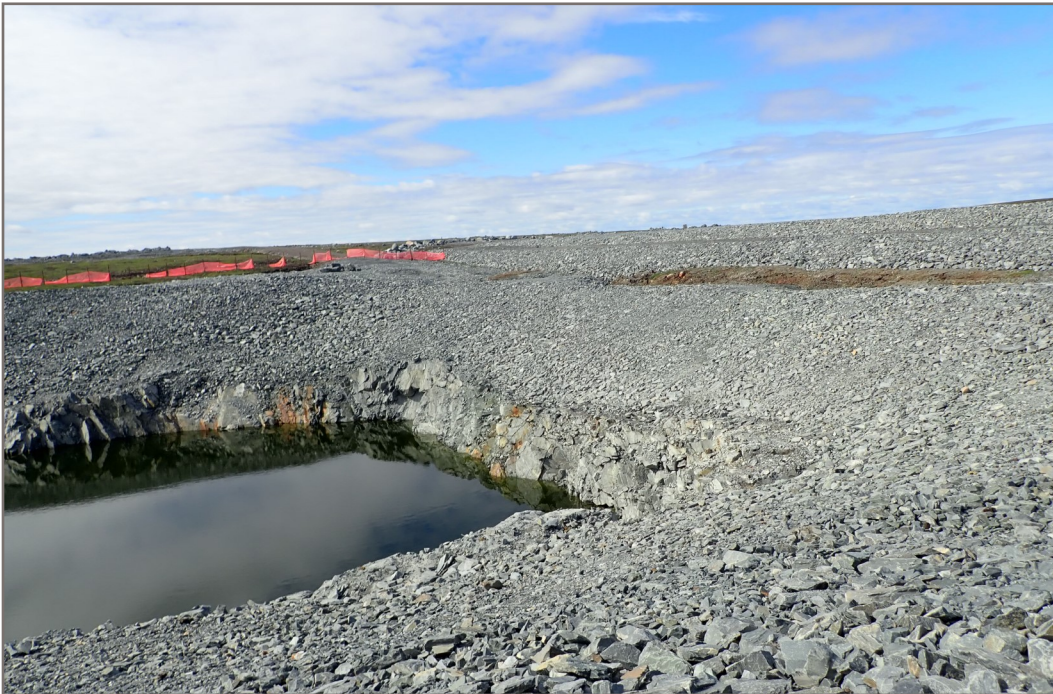
DESSINÉ PAR DRAWN BY	EL	DATE 2019-07-31
VÉRIFIÉ PAR CHECKED BY	HX	2019-07-31
APPROUVÉ PAR APPROVED BY	WTH	2019-07-31
ÉCHELLE SCALE	AS SHOWN	DATE 2019-07-31

NO. DESIGN DRAWING NO.	65-695-230-248
NO. PROJET PROJECT NO.	6515
REVISION	1
FEUILLE / SHEET	2 / 9





**Photo 1:** Pond CP4 - Looking west, Berm CP4 in the background.



**Photo 2:** Pond CP4—West end of pond, Berm CP4 on right above pond. Original ground between the Berm CP4 and rockfill covered slope shown.





**Photo 3:** Pond CP4 - Looking southeast at the ramp into the pond.



**Photo 4:** Pond CP4 - North slope—rockfill covered slope, no obvious signs of distress.





**Photo 5:** Pond CP4 - Settlement and cracking above north slope.

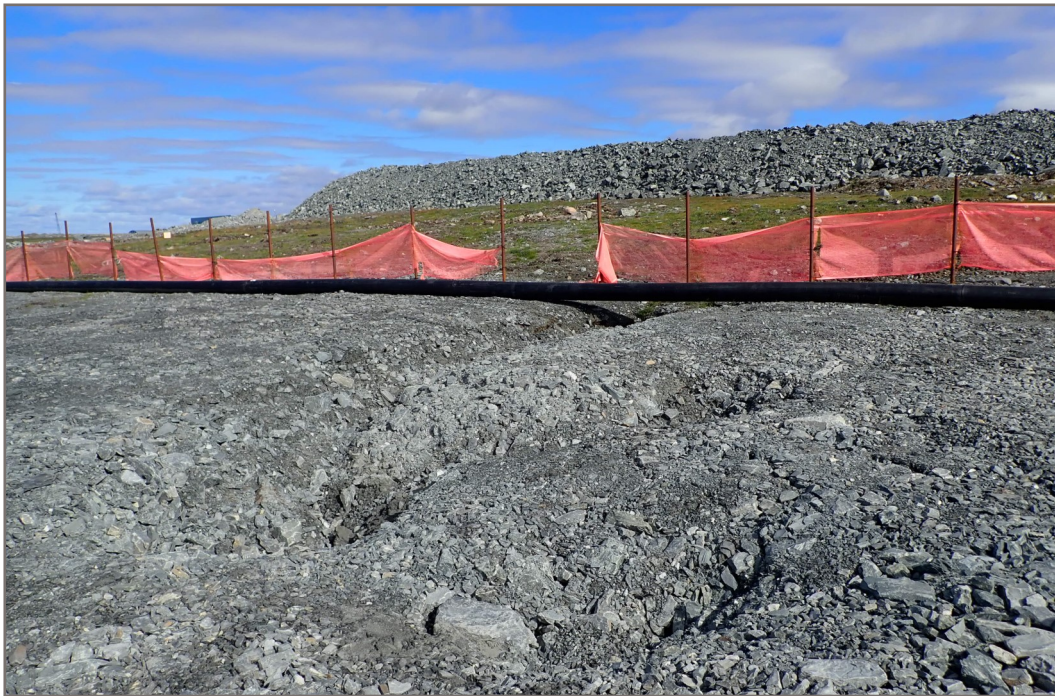


**Photo 6:** Pond CP4 - Small subsidence above north slope close to original ground contact.





**Photo 7:** Pond CP4 - Ground above rockfill covered overburden slope. Settlement and subsidence in the area.



**Photo 8:** Pond CP4 - North slope, settlement in area between rockfill covered slope on original ground.





**Photo 9:** Pond CP4 - Original ground above north slope



**Photo 10:** Pond CP4 - Settlement between Berm CP4 and west pond slope.





**Photo 11:** Pond CP4 - Settlement and between Berm CP4 and west pond slope.



**Photo 12:** Pond CP4 - Settlement between original ground and north slope, looking south



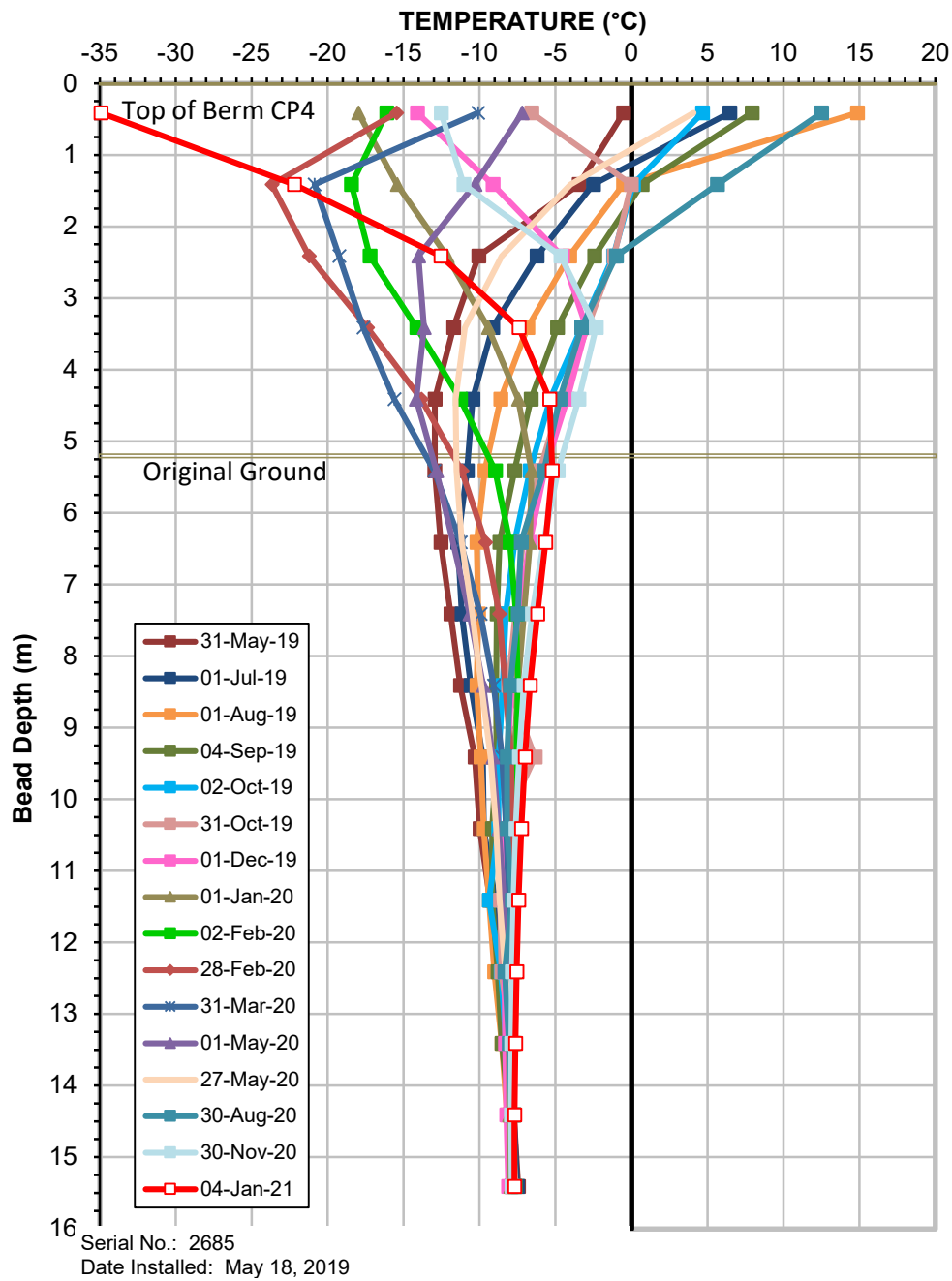


**Photo 13:** Berm CP4 - Downstream slope adjacent to Lake B8.



**Photo 14:** Berm CP4 - Upstream slope, thermal cover and original ground above Pond CP4





**Ground Temperature Profile for Cable GTC-01  
Berm CP4**



### Ground Temperature Profile for Cable GTC-02 Berm CP4



## APPENDIX E

### POND CP5 AND D-CP5