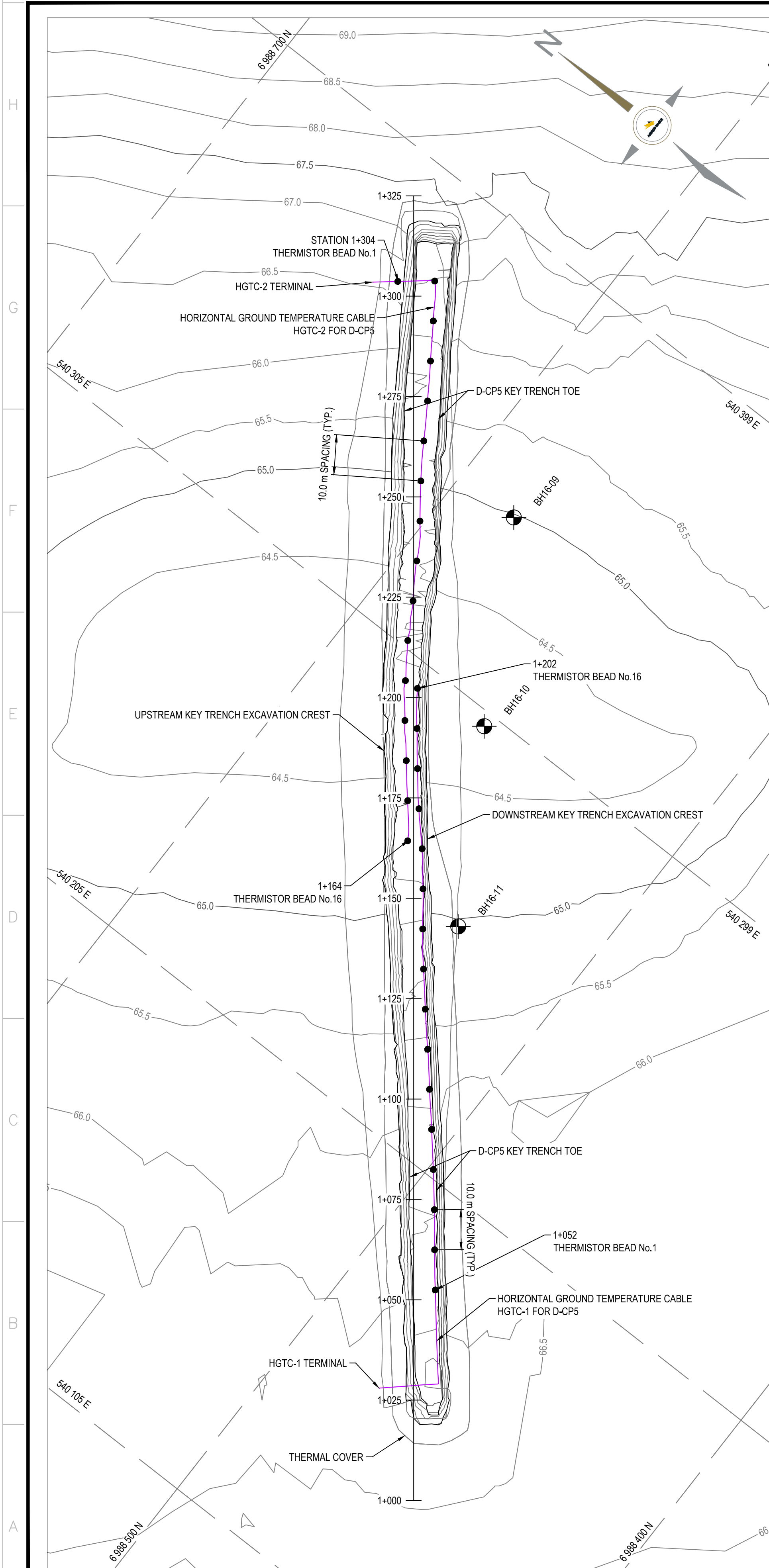
DRAWING NUMBER

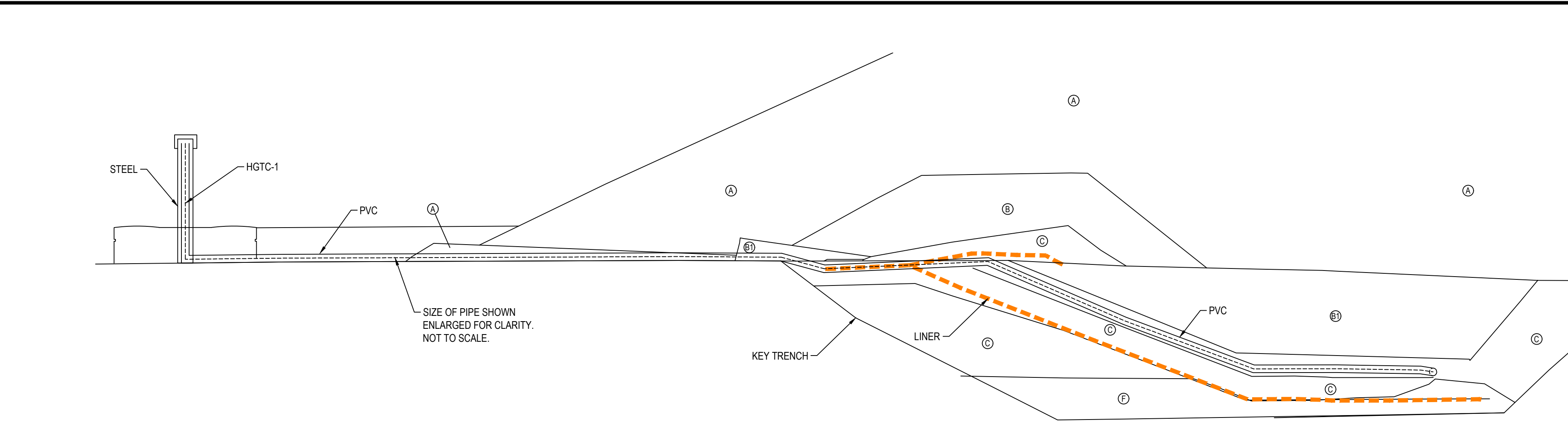
TEL QUE CONSTRUIT
AS BUILT

 DATE : 2017-10-19

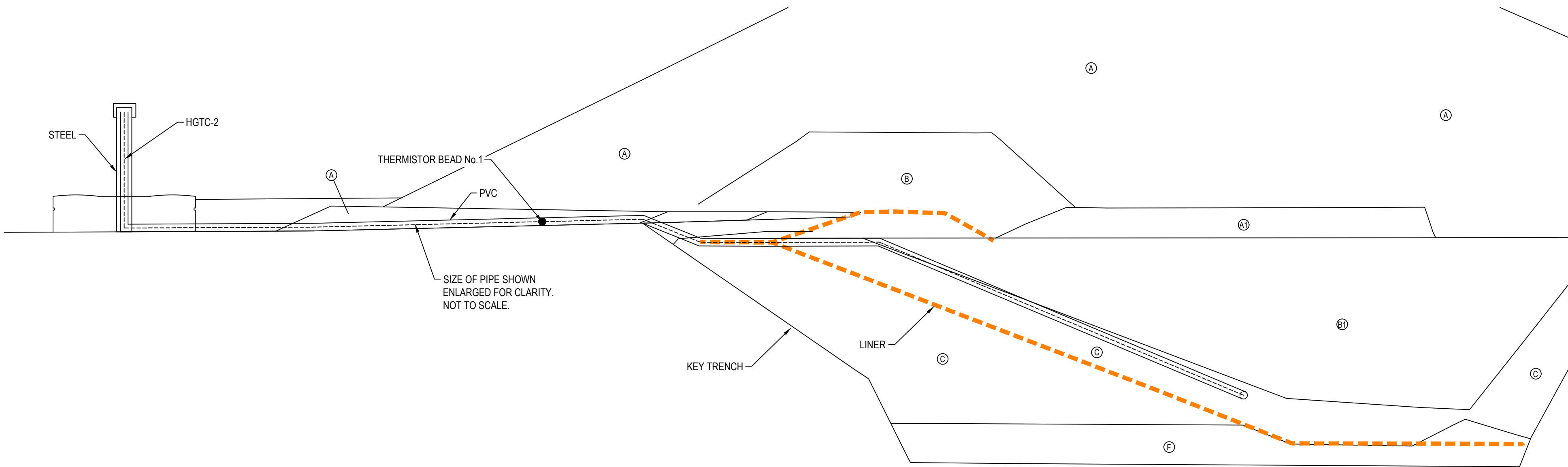




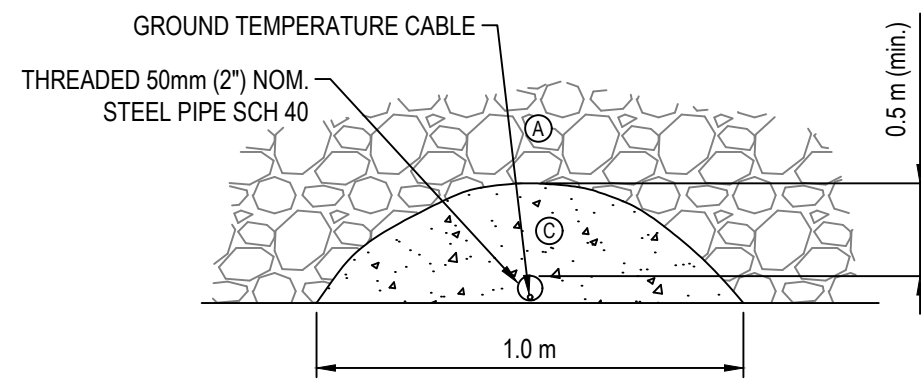
D-CP5 AS-BUILT HORIZONTAL GROUND TEMPERATURE CABLE LAYOUT
SCALE: 1:750



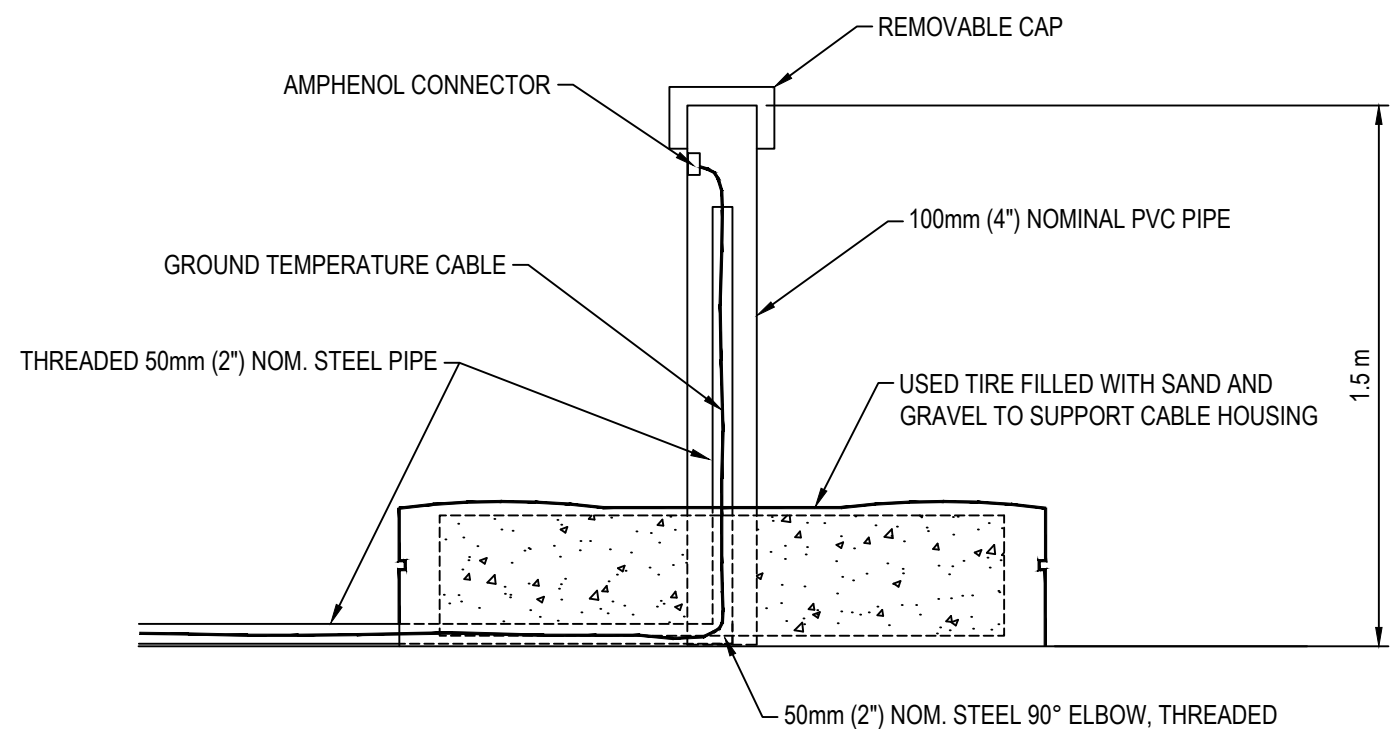
D-CP5 AS-BUILT HORIZONTAL GROUND TEMPERATURE CABLE - SOUTH TERMINAL SECTION THROUGH STATION 1+028
SCALE: 1:100



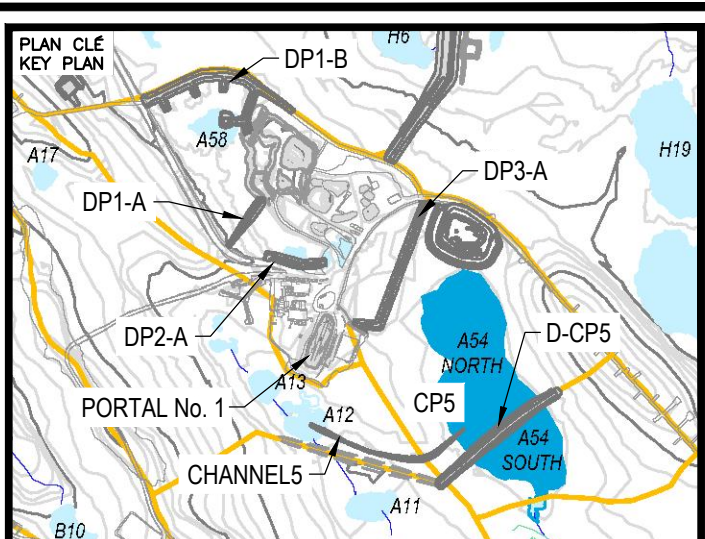
D-CP5 AS-BUILT HORIZONTAL GROUND TEMPERATURE CABLE - NORTH TERMINAL SECTION THROUGH STATION 1+304
SCALE: 1:100



TEMPERATURE CABLE - PROTECTIVE COVER SECTION
SCALE: NTS



TEMPERATURE CABLE - TERMINAL SUPPORT DETAIL
SCALE: NTS



NOTES GÉNÉRALES / GENERAL NOTES

PERMIT TO PRACTICE
TETRA TECH CANADA INC.
Signature: [Signature]
Date: Oct 17, 2017
PERMIT NUMBER: P 018
NT/NU Association of Professional
Engineers and Geoscientists

TEL QUE CONSTRUCT
AS BUILT
DATE: 2017-10-19

L'INFORMATION CONTENUE EST LA PROPRIÉTÉ DE AGNICO EAGLE. Elle est fournie à titre de référence. Toute réimpression ou utilisation non autorisée sans la permission écrite de la société AGNICO EAGLE est formellement interdite. Toute violation de cette interdiction sera poursuivie. Toute réimpression ou utilisation non autorisée sans la permission écrite de la société AGNICO EAGLE est formellement interdite. Toute violation de cette interdiction sera poursuivie.

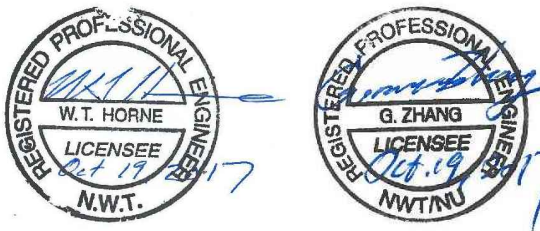
DESSINS EN RÉFÉRENCE / REFERENCE DRAWINGS

TITRE / TITLE	# DWG
---	---
---	---
---	---
---	---
---	---



REV.	DATE	DESCRIPTION	PAR/EN	APP.	CLIENT
1	2017-10-19	ISSUED FOR RECORD	WITH	NO	
2	2016-08-15	ISSUED FOR CONSTRUCTION	GZ	KJ	
3	2016-08-15	ISSUED FOR REVIEW	GZ	KJ	

REVISIONS



TITRE / TITLE
AGNICO EAGLE MELIADINE GOLD PROJECT
D-CP5 AS-BUILT
INSTRUMENTATION PLAN AND DETAILS
FOR GROUND TEMPERATURE CABLES

DESSINÉ PAR DRAWN BY	DRG	DATE 2016-08-08
VÉRIFIÉ PAR CHECKED BY	GZ	2016-08-15
APPROUVÉ PAR APPROVED BY	KJ	2016-08-15

ÉCHELLE
SCALE AS SHOWN
DATE 2016-08-08

NO. DESSIN
PROJECT NO. 65-685-230-220

NO. PROJET PROJECT NO.	REVISION	FEUILLE / SHEET
6515	1	8 / 9



NOTES GÉNÉRALES / GENERAL NOTES

PERMIT TO PRACTICE
TETRA TECH CANADA INC.
Signature [Signature]
Date Oct 19, 2017
PERMIT NUMBER: P 018
NT/NU Association of Professional
Engineers and Geoscientists

TEL QUE CONSTRUIT
AS BUILT

DATE : 2017-10-15

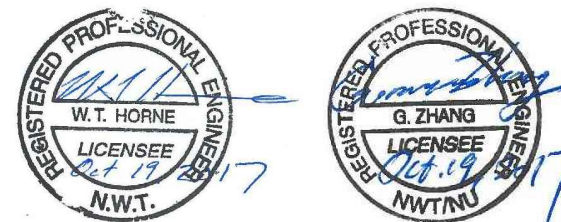
L'INFORMATION CI-CONTENUE EST LA PROPRIÉTÉ DE AIGWCO EAGLE LTD. ET DOIT ÊTRE RETOURNÉE SUR DEMANDE, SANS AUTORISATION ÉCRITE PRÉALABLE, TOUTE TRANSMISSION DE CETTE À AUTRUI ET TOUTE UTILISATION AUTRE QUE CELLE POUR LAQUELLE L'INFORMATION EST PRÉVOUE SONT INTERDITES. (C) AIGWCO EAGLE LTD.

THE INFORMATION HERE ON IS THE PROPERTY OF AIGWCO EAGLE LTD. AND MUST BE RETURNED UPON REQUEST, WITHOUT WRITTEN PERMISSIONS. ANY COPYING, TRANSMISSION TO OTHERS AND ANY USE EXCEPT THAT FOR WHICH IT IS LOANED ARE PROHIBITED.
(C) AIGWCO EAGLE LTD.

[illegible]

1	2017-10-19	ISSUED FOR RECORD	WITH	NG	
0	2016-08-15	ISSUED FOR CONSTRUCTION	GZ	KJ	
A	2016-08-10	ISSUED FOR REVIEW	GZ	KJ	
REV.	DATE	DESCRIPTION	PAR/BY	APP.	CLIENT

REVISIONS



TITRE / TITLE	AGNICO EAGLE MELIADINE GOLD PROJECT
---------------	-------------------------------------

D-CP5 AS-BUILT - INSTRUMENTATION PLAN AND
DETAILS FOR GROUND TEMPERATURE CABLES
AND SETTLEMENT SURVEY MONUMENT POINTS

DESSINÉ PAR DRAWN BY	DRG	DATE 2016-08-0
-------------------------	-----	-------------------

VERIFIÉ PAR CHECKED BY	GZ	2016-08-1
---------------------------	----	-----------

APPROUVÉ PAR APPROVED BY	KJ	2016-08-1
-----------------------------	----	-----------

ÉCHELLE SCALE	AS SHOWN	DATE	2016-08-08
------------------	----------	------	------------

NO. DESSIN DRAWING NO.	65-685-230-221
---------------------------	----------------

NO. PROJ. PROJECT NO.	REVISION	FEUILLE / SHEET
6515	1	9 / 9



Photo 1: D-CP5 Dike - looking towards the north, upstream.



Photo 2: D-CP5 Dike - looking towards the south, upstream.



Photo 3: D-CP5 Dike - looking towards the south, downstream, new fill and haul road.



Photo 4: D-CP5 Dike - looking towards the north, downstream, new fill and haul road.



Photo 5: D-CP5 Dike—Survey monument.



Photo 6: D-CP5 Dike - upstream, construction access road, below previously submerged area.



Photo 7: D-CP5 Dike - Upstream Shell



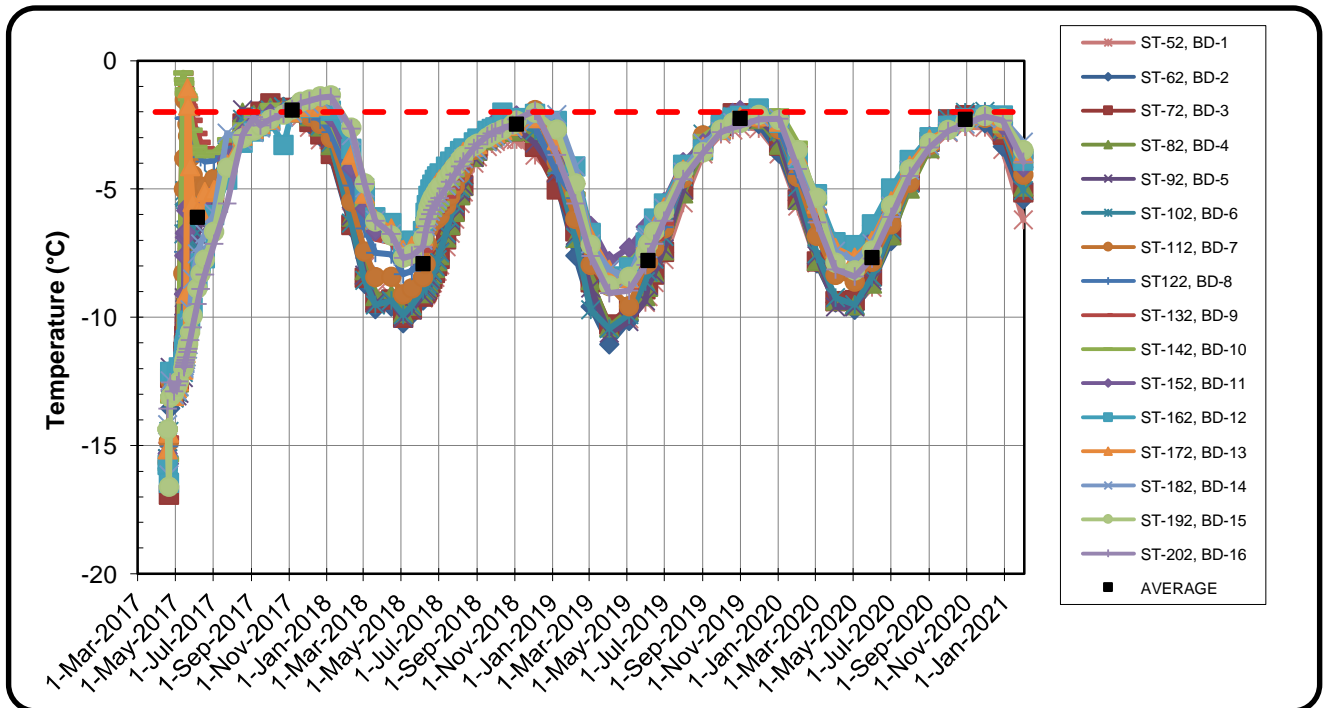
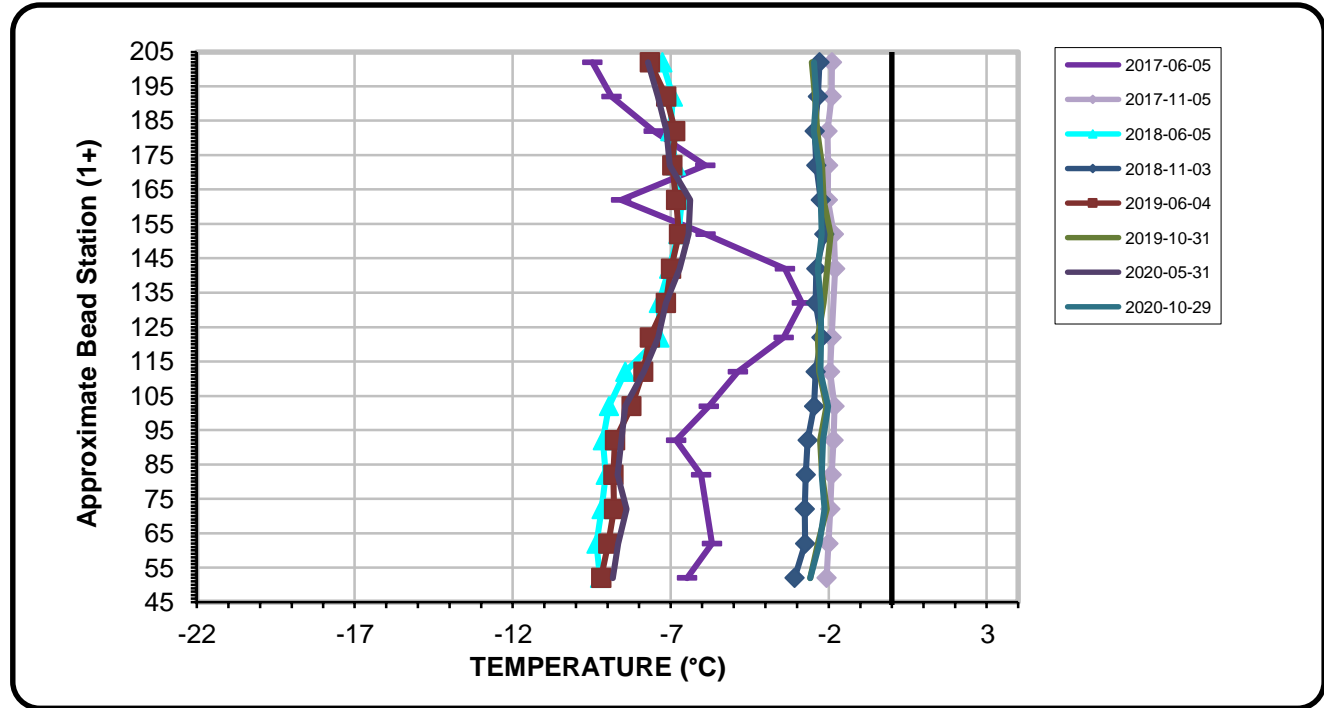
Photo 8: D-CP5 Dike - Crack on upstream shell, also observed in 2018 and 2019.



Photo 9: CP5 Jetty - looking towards the north east, erosion evident just above the water level.



Photo 10: CP5 Jetty - looking towards the north.

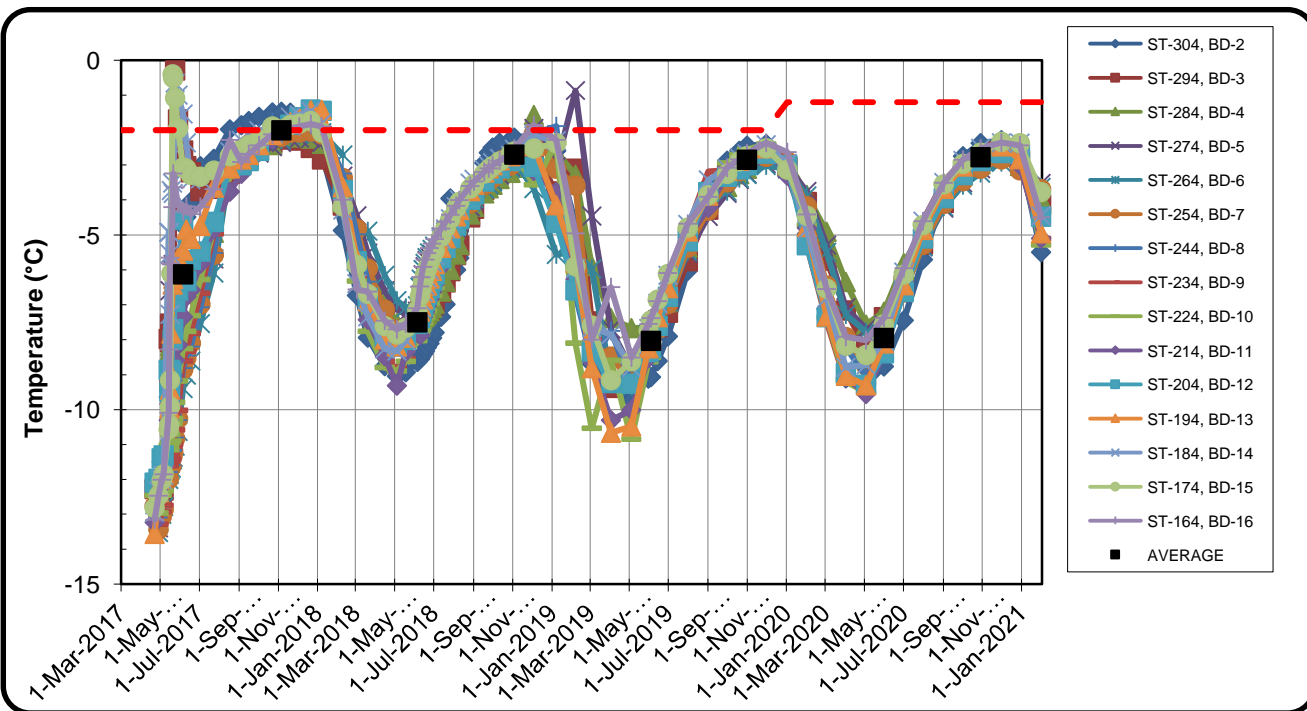
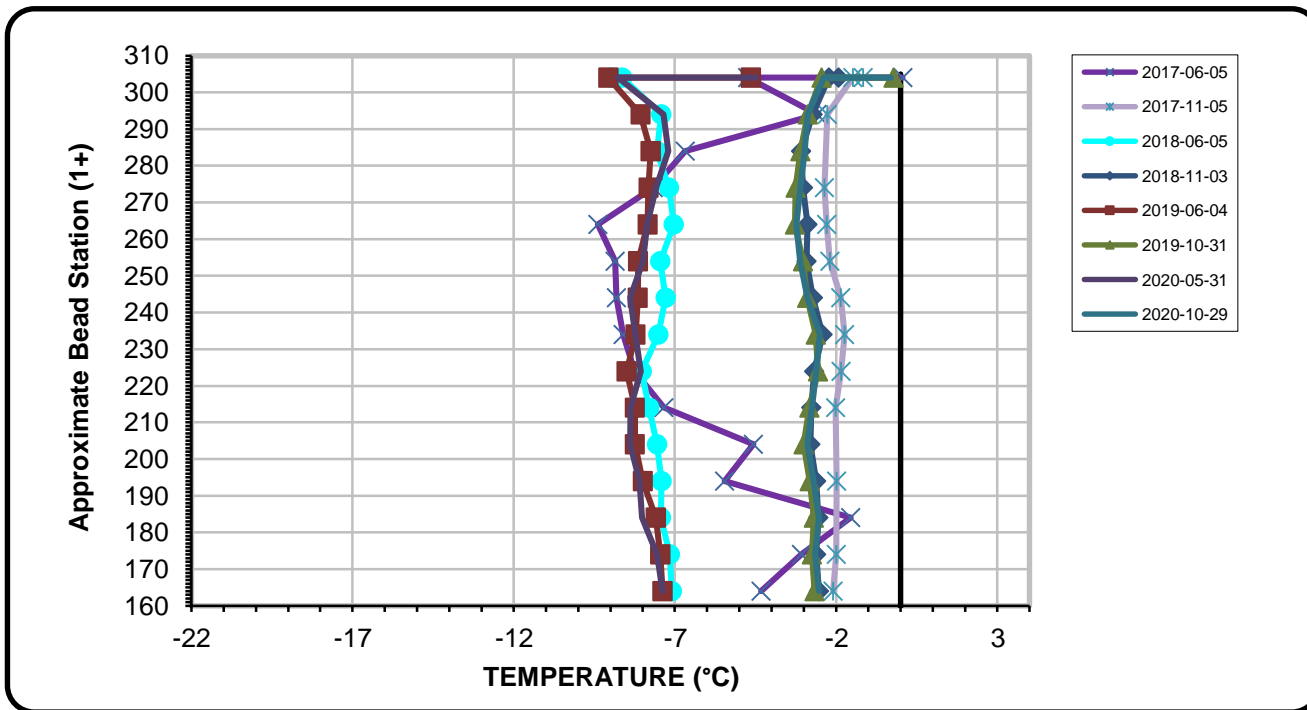


Serial No.: 2600
Date Installed: April 15, 2017

EBA File No: E14103230.01-023

**Horizontal Ground Temperature Profile for Cable #1 (HGTC-01)
Dike D-CP5**



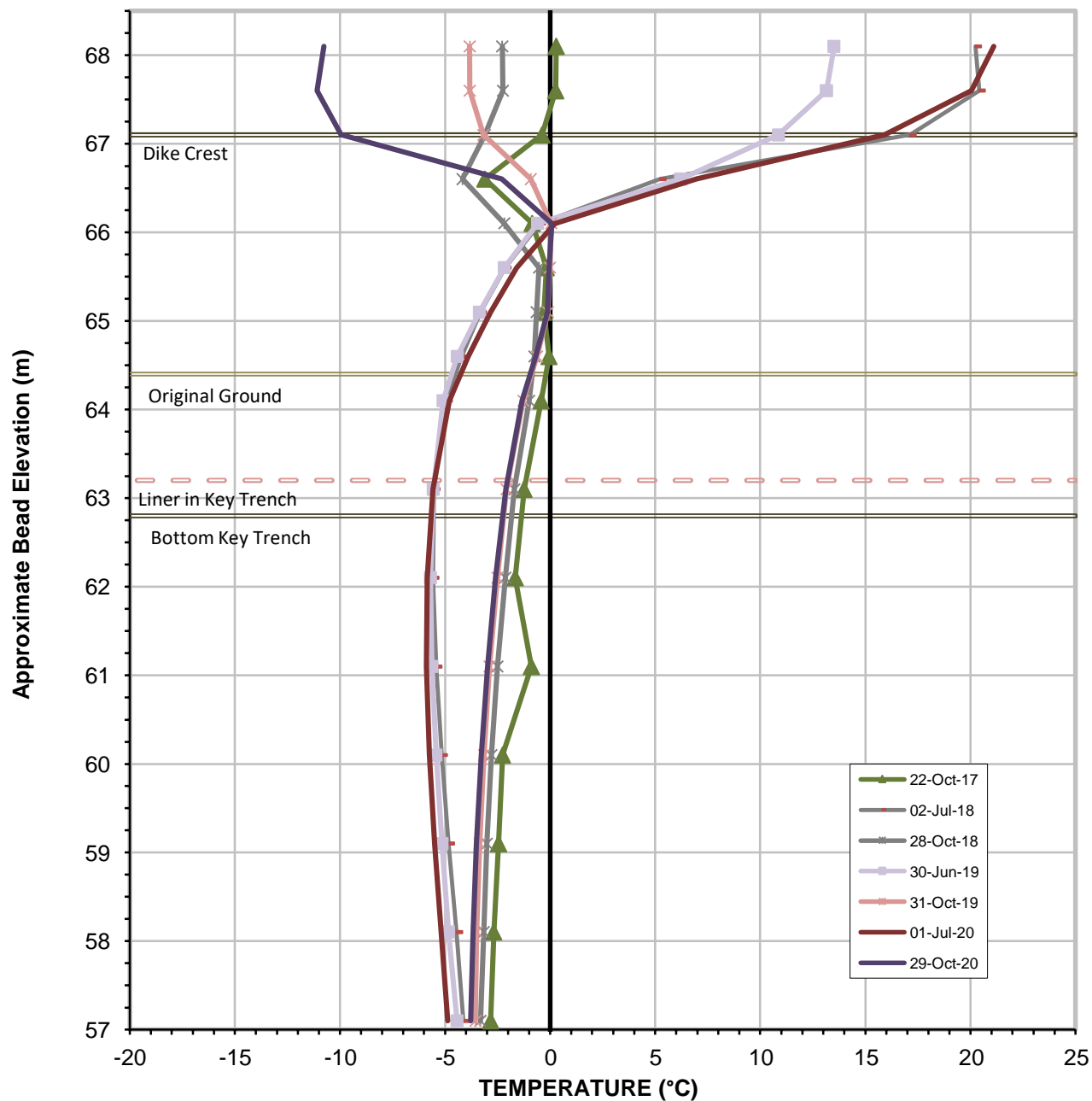


Serial No.: 2601
Date Installed: April 20, 2017

EBA File No: E14103230.01-023

**Horizontal Ground Temperature Profile for Cable #2 (HGTC-02)
Dike D-CP5**





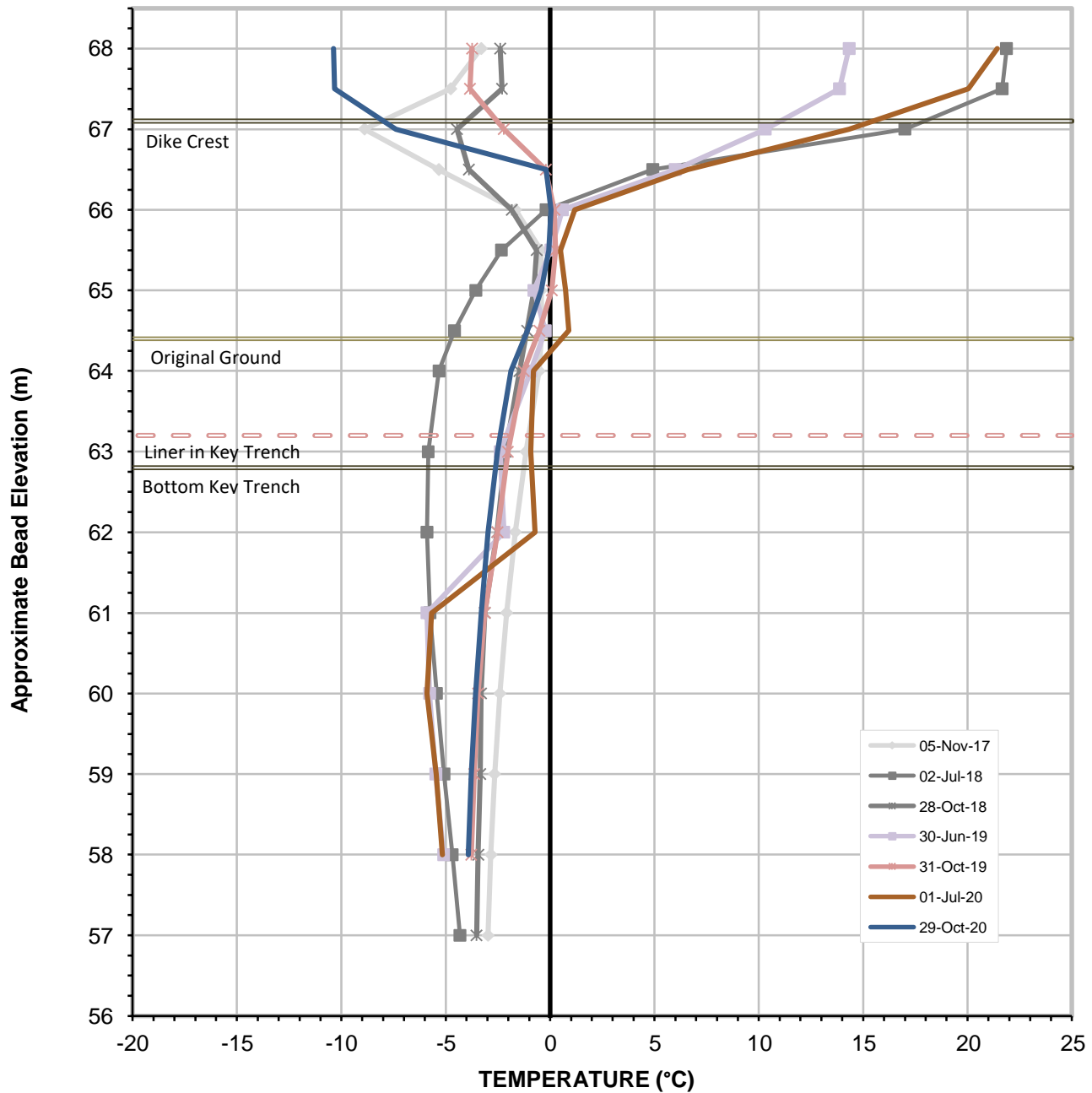
Serial No.: 2631
Date Installed: July 24, 2017

**Vertical Ground Temperature Profile for Cable VGTC-01
Dike D-CP5**



Average Annual Temperature at Various Elevations

	November 2017 - November 2018	November 2018 - November 2019	November 2019 - November 2020
Bottom of Cable	-3.4	-3.6	-3.9
Liner Base Elevation	-4.2	-4.2	-4.6



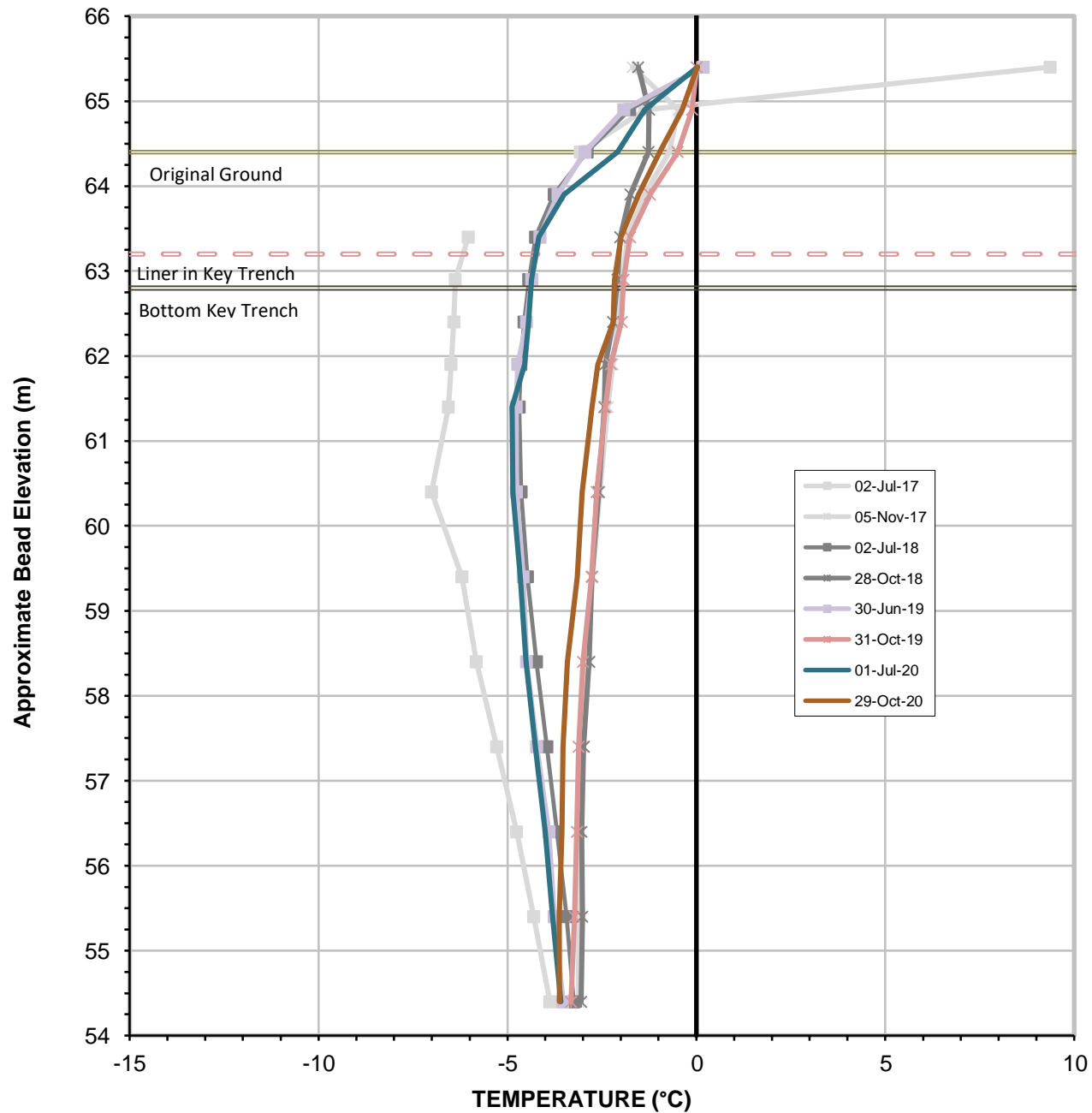
Serial No.: 2632
Date Installed: July 24, 2017

**Vertical Ground Temperature Profile for Cable VGTC-02
Dike D-CP5**



Average Annual Temperature at Various Elevations

	November 2017 - November 2018	November 2018 - November 2019	November 2019 - November 2020
Bottom of Cable	-3.9	-4.1	-4.2
Liner Base Elevation	-4.7	-3.5	-4.3



Vertical Ground Temperature Profile for Cable VGTC-03
Dike D-CP5

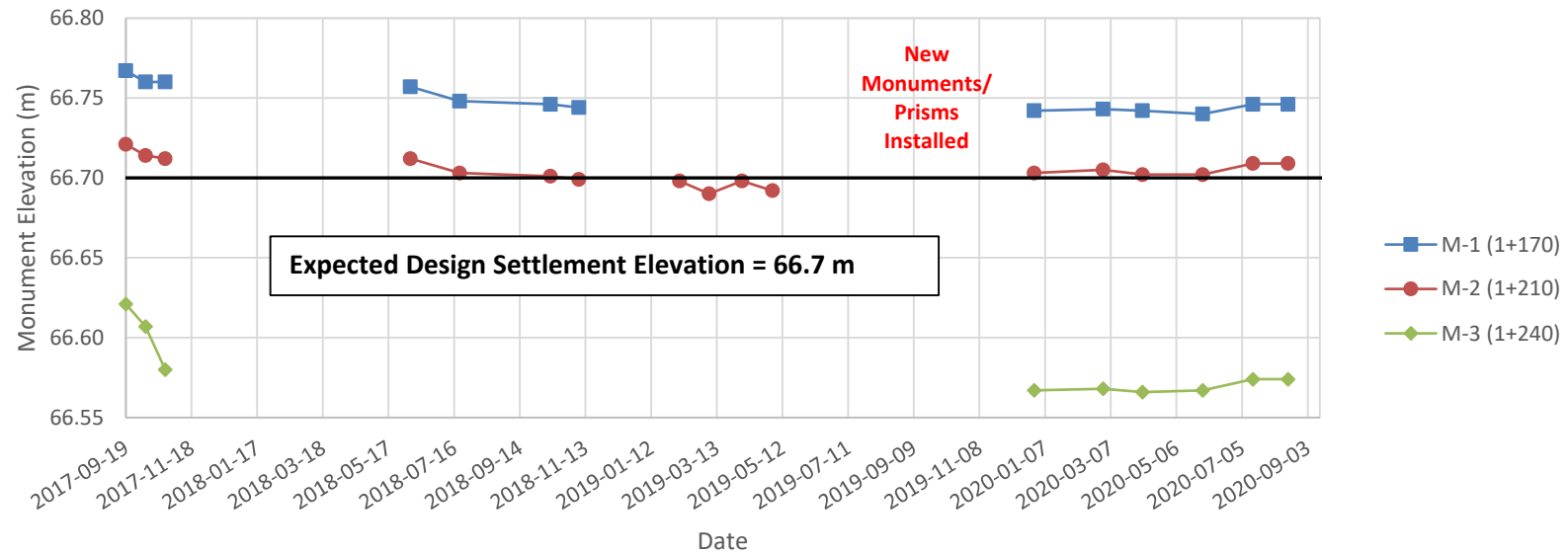


Serial No.: 2633
Date Installed: June 15, 2017

Average Annual Temperature at Various Elevations

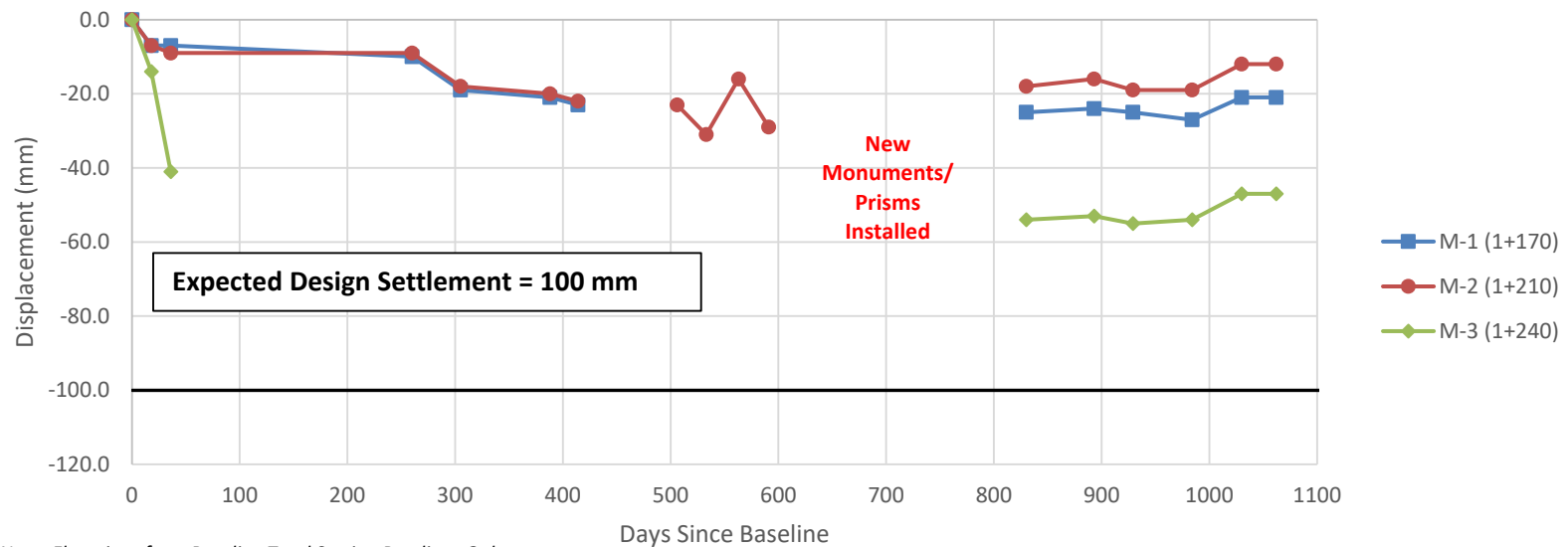
	November 2017 - November 2018	November 2018 - November 2019	November 2019 - November 2020
Bottom of Cable	-3.1	-3.2	-3.3
Liner Base Elevation	-3.9	-3.8	-3.4

D-CP5 Liner Elevation



Note: Elevations from Baseline Total Station Readings Only

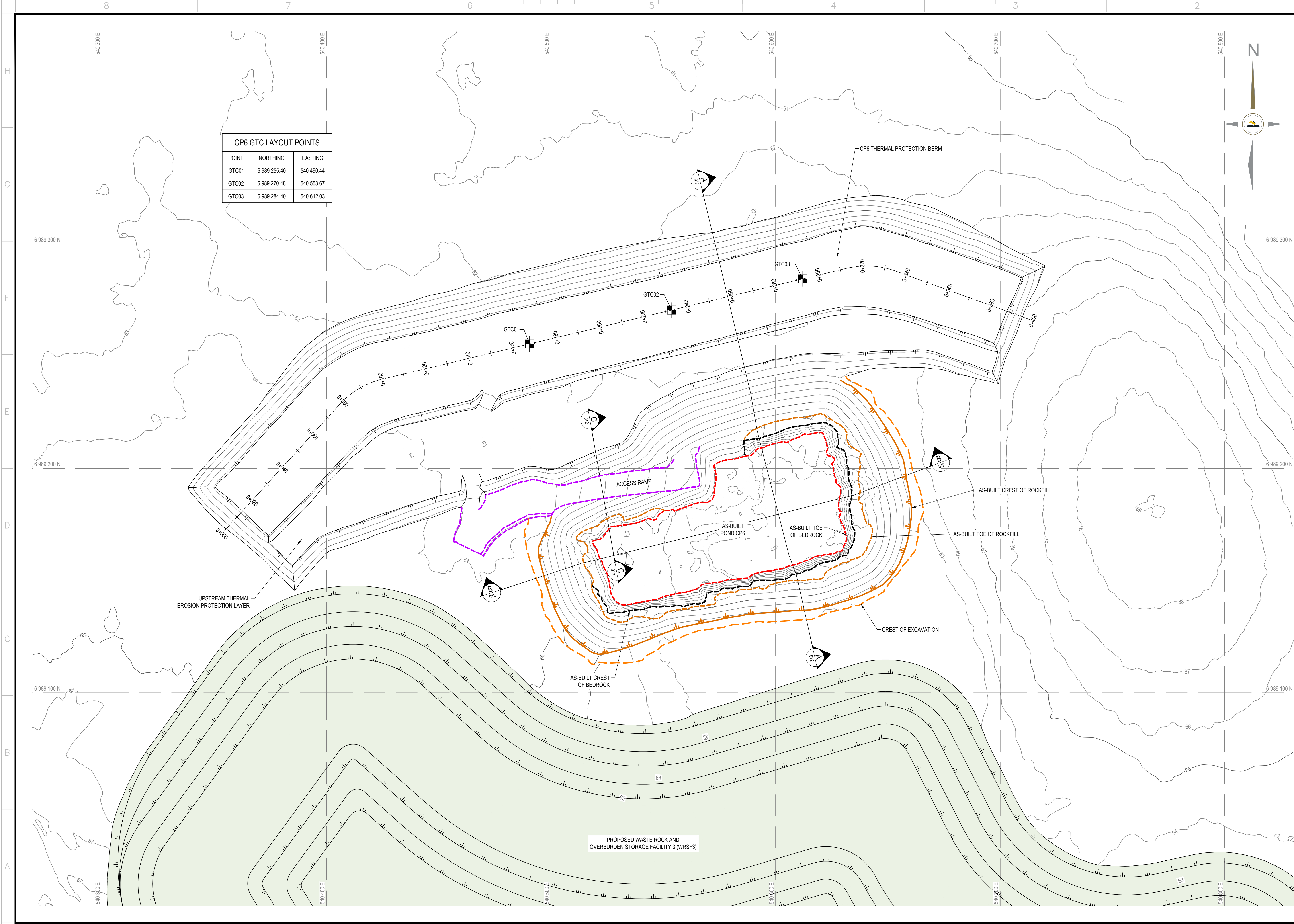
D-CP5 Total Vertical Displacement over Time



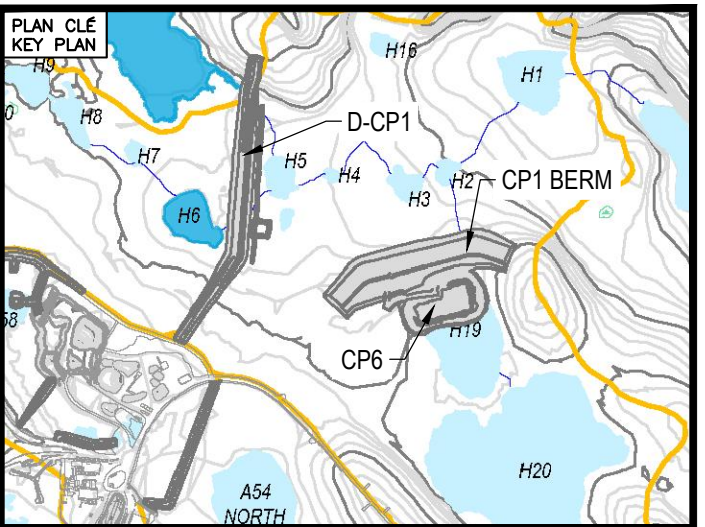
Note: Elevations from Baseline Total Station Readings Only

APPENDIX F

POND CP6 AND BERM

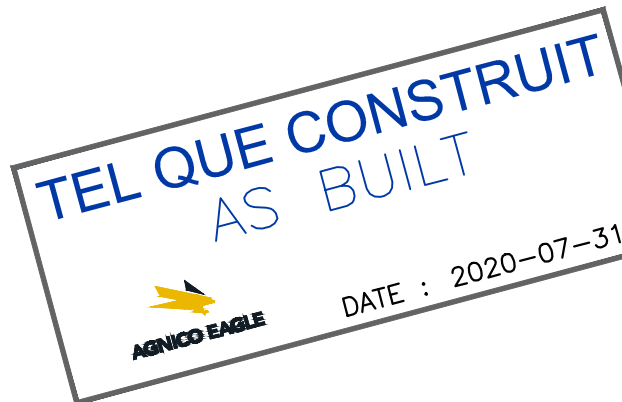


CP6 GTC LAYOUT POINTS		
POINT	NORTHING	EASTING
GTC01	6 989 255.40	540 490.44
GTC02	6 989 270.48	540 553.67
GTC03	6 989 284.40	540 612.03



NOTES GÉNÉRALES / GENERAL NOTES

1. ASSUMED CONSTRUCTION SCHEDULE MARCH 2020
2. ASSUMED OPERATION SCHEDULE STARTING TO STORE WATER FROM FRESHET OF 2020.
3. POND DESIGN CAPACITY IS BASED ON STORING 3/7 OF FRESHET WATER UNDER 1:100 WET YEAR CONDITION.
4. THE MAXIMUM ALLOWABLE OPERATING WATER LEVEL IS AT ELEVATION 60.0 m UNDER THE DESIGN IDF CONDITION.
5. MATERIAL PLACEMENT AND FOUNDATION PREPARATION SHOULD BE IN ACCORDANCE WITH THE REQUIREMENTS OF GEOTECHNICAL CONSTRUCTION / MATERIAL SPECIFICATIONS (TETRA TECH 2020).
6. THE SINGLE-LANE RAMP HAS A MINIMUM ROAD WIDTH OF 7.0 m (FOR VOLVO A40F OR CAT 745 HAUL TRUCKS OR SMALLER EQUIPMENT).



L'INFORMATION CONTENUE EST LA PROPRIÉTÉ DE AGNICO EAGLE LTD. ET DOIT ÊTRE RETENUE, SUR DEMANDE, SANS AUTORISATION ÉCRITE, PAR AGNICO EAGLE LTD. (AGNICO EAGLE LTD.)

INFORMATION HEREIN IS THE PROPERTY OF AGNICO EAGLE LTD. AND MUST BE RETAINED (ON REQUEST) WITHOUT WRITTEN PERMISSION, AND COPIES TRANSMITTED TO OTHERS AND ANY USE EXCEPT THAT FOR WHICH IT IS ISSUED ARE PROHIBITED.

© AGNICO EAGLE LTD.

DESSINS EN RÉFÉRENCE / REFERENCE DRAWINGS

TITRE / TITLE	# DWG
---	---
---	---
---	---
---	---
---	---



REV.	DATE	DESCRIPTION	PAR/EN	APP.	CLIENT
1	2020-07-31	RECORD DRAWINGS	EL	WITH	
0	2020-01-22	ISSUED FOR CONSTRUCTION	OZ	WITH	
A	2020-01-17	ISSUED FOR REVIEW	OZ	WITH	

REVISIONS

TITRE / TITLE
AS-BUILT REPORT FOR
POND CP6 AND BERM CP6
CP6 AND CP6 THERMAL PROTECTION BERM
LAYOUT PLAN

DESSINÉ PAR
DRAWN BY EL

DATE
2020-07-31

VÉRIFIÉ PAR
CHECKED BY FN

2020-07-31

APPROUVÉ PAR
APPROVED BY WITH

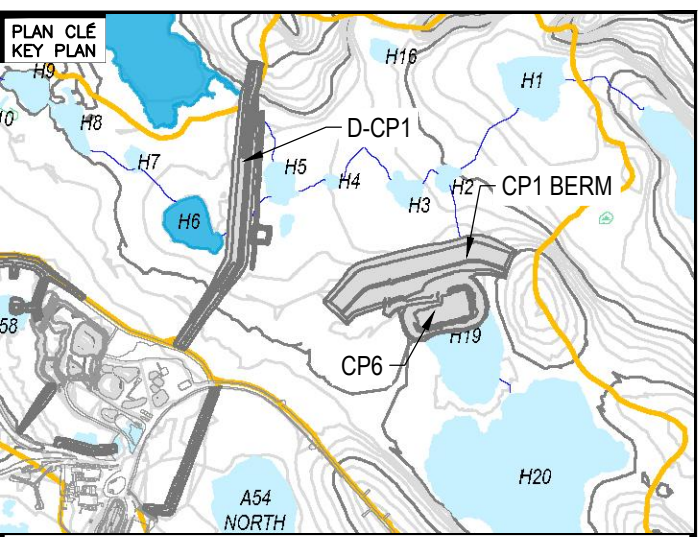
2020-07-31

ÉCHELLE
SCALE 1:750

DATE
2020-07-31

NO. DESSIN
DRAWING NO. 65-695-230-009

NO. PROJET PROJECT NO.	REVISION	FEUILLE / SHÉ
6526	1	1 / 4



NOTES GÉNÉRALES / GENERAL NOTES

1. ASSUMED CONSTRUCTION SCHEDULE MARCH 2020
2. ASSUMED OPERATION SCHEDULE STARTING TO STORE WATER FROM FRESHET OF 2020.
3. POND DESIGN CAPACITY IS BASED ON STORING 3/7 OF FRESHET WATER UNDER 1:100 WEY YEAR CONDITION.
4. THE MAXIMUM ALLOWABLE OPERATING WATER LEVEL IS AT ELEVATION 60.0 m UNDER THE DESIGN IDF CONDITION.
5. MATERIAL PLACEMENT AND FOUNDATION PREPARATION SHOULD BE IN ACCORDANCE WITH THE REQUIREMENTS OF GEOTECHNICAL CONSTRUCTION / MATERIAL SPECIFICATIONS (TETRA TECH 2020).

LEGEND

- ④ CLEAN ROCKFILL FROM EXCAVATION (600 mm MINUS)
- ⑤ OVERBURDEN FROM EXCAVATION (300 mm MINUS)

TEL QUE CONSTRUIT
AS BUILT

DATE : 2020-07-31

L'INFORMATION CI-CONTENUE EST LA PROPRIÉTÉ DE AMCOO EAGLE LTD. ET DOIT ÊTRE RETOURNÉE SUR DEMANDE, SANS AUTORISATION ÉCRITE
 PRÉALABLE, TOUTE TRANSMISSION DE COPIES À AUTRUI (ET TOUTE UTILISATION AUTRE QUE CELLE POUR LAQUELLE L'INFORMATION EST PRÉCISÉ
 SONT INTERDITES. © AMCOO EAGLE LTD.

THE INFORMATION HERE ON IS THE PROPERTY OF AMCOO EAGLE LTD. AND MUST BE RETURNED UPON REQUEST, WITHOUT WRITTEN PERMISSION,
 ANY COPYING, TRANSMITTING TO OTHERS AND ANY USE EXCEPT THAT FOR WHICH IT IS LOANED ARE PROHIBITED. © AMCOO EAGLE LTD.

DESSINS EN RÉFÉRENCE / REFERENCE DRAWINGS

TITRE / TITLE	# DWG
	--
	--
	--
	--
	--

**AGNICO EAGLE**

1	2020-07-31	RECORD DRAWINGS	EL	WTH	
0	2020-01-22	ISSUED FOR CONSTRUCTION	GZ	WTH	
A	2020-01-17	ISSUED FOR REVIEW	GZ	WTH	
REV.	DATE	DESCRIPTION	PAR/BY	APP.	CLIENT

REVISIONS

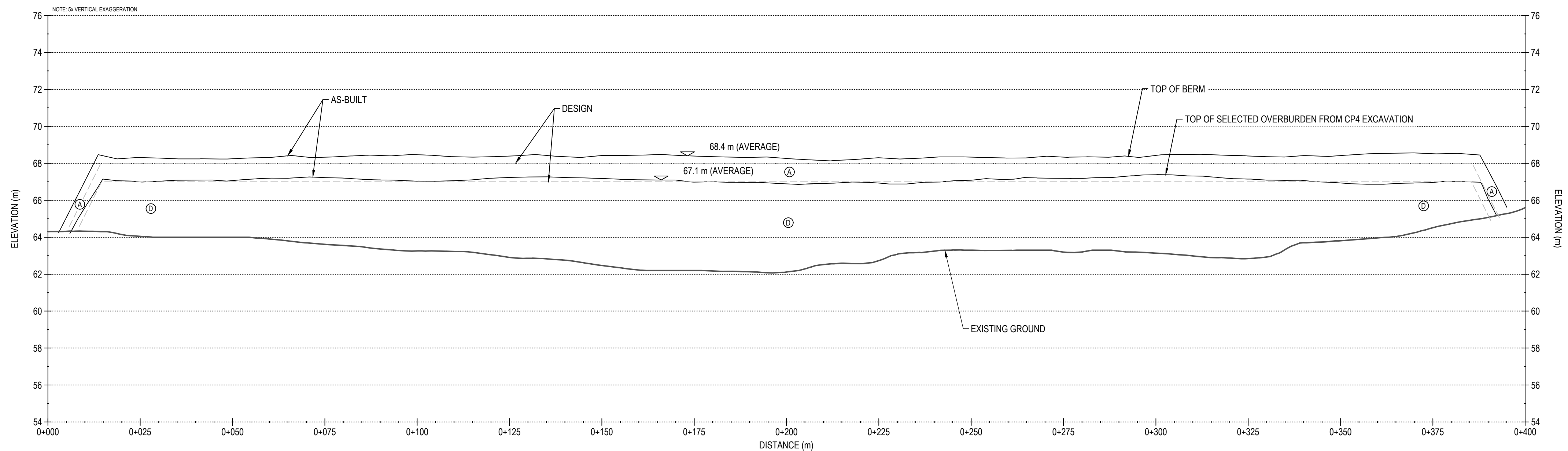
AS-BUILT REPORT FOR
POND CP6 AND BERM CP6

CP6 TYPICAL SECTION AND
CP6 THERMAL PROTECTION BERM PROFILE

ESSINÉ PAR DRAWN BY	EL	DATE 2020-07-3
ÉRIFIÉ PAR CHECKED BY	FN	2020-07-3
PPROUVÉ PAR APPROVED BY	WTH	2020-07-3

CHELLE SCALE	AS SHOWN	DATE 2020-07-31
NO. DESSIN DRAWING NO.		
65-695-230-010		

NO. PROJET PROJECT NO. 6526	REVISION	FEUILLE / SHT
	1	2 / 4



BERM CP6 - PROFILE
SCALE: H-1:750 V-1:150



Photo 1: Pond CP6 - Looking north—contact between bedrock and overburden evident.



Photo 2: Pond CP6—Looking north, ramp into pond. Boulders along ramp. Some sediment washout in south west corner.



Photo 3: Pond CP6 - Looking south, exposed bedrock below Berm CP6



Photo 4: Pond CP6—South side of pond, WRSF3 to the left of the photo. Bedrock contact.



Photo 5: Pond CP6 - Upstream crest—some settlement is evident



Photo 6: Pond CP6 - Southwest corner—Rockfill over the overburden slope.



Photo 7: Pond CP6 - WRSF3 upstream of Pond CP6. Drainage coming off WRSF3.



Photo 8: Pond CP6 - Former lakebed between Pond CP6 and WRSF3—erosion and subsidence channel.



Photo 9: Pond CP6 - Former lakebed between Pond CP6 and WRSF3—erosion and subsidence channel.



Photo 10: Pond CP6 - Former lakebed between Pond CP6 and WRSF3—erosion and subsidence channel.



Photo 11: Pond CP6 - Subsidence and settlement in original ground adjacent to rockfill cover over overburden slope.



Photo 12: Pond CP6 - Subsidence at southeast corner of water collection pond downstream of the dike.



Photo 13: Berm CP6 - Looking northeast.



Photo 14: Berm CP6 - Viewed from Dike D-CP1.