



Photo 1: Meliadine North North Esker Borrow



Photo 2: Meliadine Esker—drainage channel



Photo 3: Meliadine Esker Borrow—drainage channel



Photo 4: Wesmag Borrow

APPENDIX L

ORE STOCKPILES



Photo 1: Ore Stockpile Area

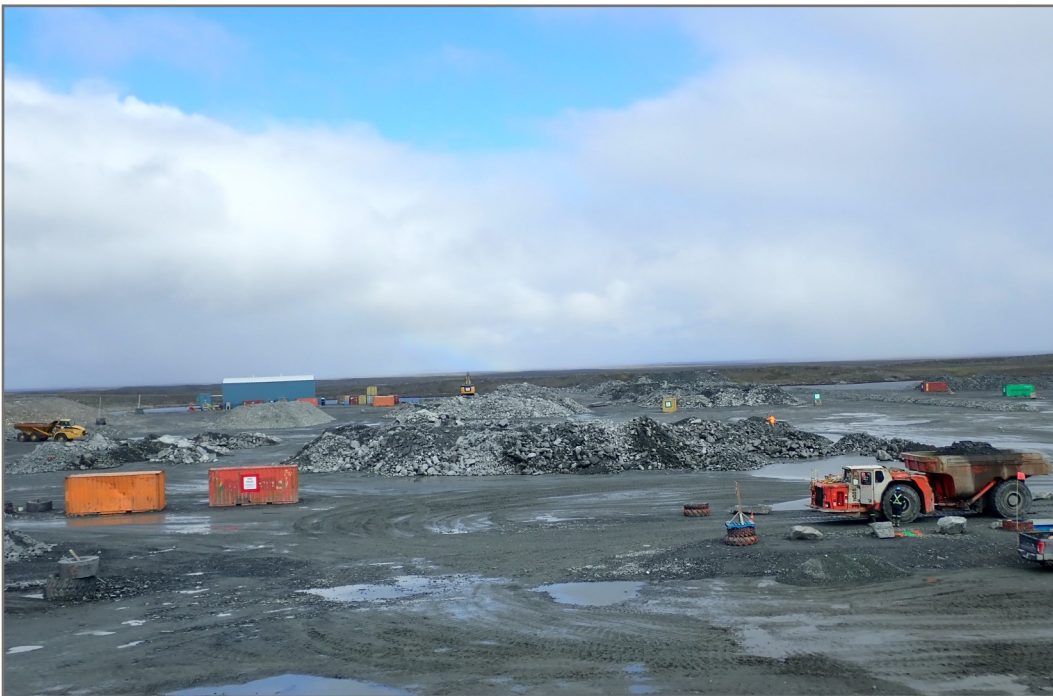


Photo 2: Ore Stockpile Area



Photo 3: Ore Stockpile—Low Grade



Photo 4: Ore Stockpile—Loader



Photo 5: Ore Stockpile,



Photo 6: Ore Stock Pile

APPENDIX M

EXPLORATION CAMP



Photo 1: Exploration Camp



Photo 2: Exploration Camp Fuel Storage



Photo 3: Exploration Camp Fuel Storage



Photo 4: Exploration Camp—Diffuser line



Photo 5: Exploration Camp—Road to diffuser line

APPENDIX N

OTHER MELIADINE FACILITIES



Photo 1: Landfill—Dry waste including, wood, steel, plastic, and other.



Photo 2: Landfill—East berm, waste close to crest.



Photo 3: Landfill—Perimeter Berm, looking south.



Photo 4: Landfill—South Berm.



Photo 5: Landfill - West berm—esker fill.



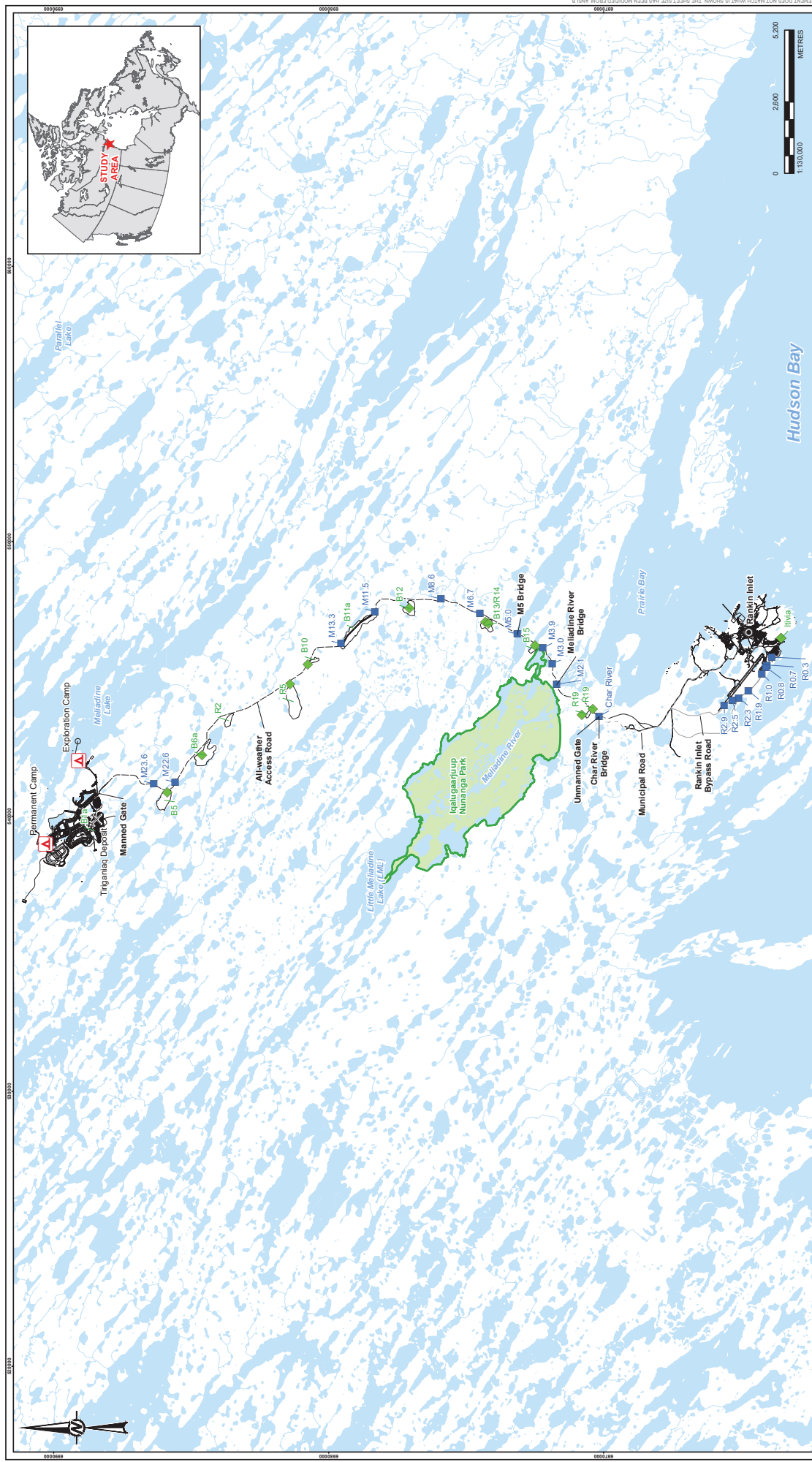
Photo 6: Landfill— South berm.



Photo 7: Landfill - west berm.

APPENDIX O

ALL-WEATHER ACCESS ROAD (AWAR)




<p>LEGEND</p> <p>CAMP</p> <p>PROPOSED MINE SITE</p> <p>QUARRY/BORROW PIT LOCATION</p> <p>WATERCOURSE CROSSING</p> <p>ALL-WEATHER ACCESS ROAD (AWAR)</p> <p>ROAD - NEW</p>		<p>--- ROAD - EXISTING</p> <p>WATERBODY</p> <p>TERRITORIAL PARK</p>		<p>REFERENCE(S)</p> <p>1. DATA OBTAINED FROM AGNICO EAGLE MINES LIMITED.</p> <p>2. DATUM: NAD83 PROJECTION UTM ZONE 19</p>		<p>146000</p> <p>146000</p>		<p>146000</p> <p>146000</p>		<p>CLIENT</p> <p>AGNICO EAGLE MINES LTD.</p>		<p>CONSULTANT</p> <p> GOLDER</p>		<p>2019-02-14</p> <p>DESIGNED FE</p> <p>PREPARED CDB</p> <p>REVIEWED FE</p> <p>APPROVED ACI</p>		<p>PROJECT</p> <p>MELIADINE GOLD PROJECT</p>		<p>TITLE</p> <p>MELIADINE ALL WEATHER ACCESS ROAD WITH QUARRIES AND WATERCOURSE CROSSINGS</p>		<p>PROJECT NO.</p> <p>181057719</p>		<p>CONTROL</p> <p>3000/002</p>		<p>REV.</p> <p>0</p>		<p>FIGURE</p> <p>5</p>	
---	--	---	--	--	--	-----------------------------	--	-----------------------------	--	--	--	--	--	---	--	--	--	--	--	-------------------------------------	--	--------------------------------	--	----------------------	--	------------------------	--



Photo 1: Culvert km 5.5



Photo 2: Char River Bridge



Photo 3: Char River Bridge—North abutment



Photo 4: Char River Bridge—South Abutment



Photo 5: Culvert km 6.2



Photo 6: Culvert km 7.0



Photo 7: Culvert km 7.1



Photo 8: Culvert km 7.4—Damage to culvert inlet



Photo 9: Meliadine River Bridge north abutment



Photo 10: Meliadine River Bridge South Abutment



Photo 11: Meliadine River Bridge north abutment



Photo 12: Meliadine River Bridge—Shoreline downstream of bridge—erodible sand and gravel deposit.



Photo 13: Meliadine River Bridge



Photo 14: Meliadine River



Photo 15: Culvert km 9.1



Photo 16: Culvert km 9.5