

ABANDONMENT and RESTORATION PLAN
MPH Consulting Limited

Turquetil - Esker Drilling Program
Turquetil - Henik Lakes Area
Nunavut

Table of Contents

	Page
1. Preamble.....	3
2. Introduction.....	3
3. Schedule.....	3
4. Infrastructure.....	3
5. Seasonal Shutdown.....	4
6. Final Abandonment and Restoration.....	6
7. Project Maps.....	8
Figure 1 – General Location Map.....	8
Figure 2 – Detailed Location Map for Drilling Operations.....	9
Figure 3 – Turquetil Operational Area Location Map	10
Figure 4 – Turquetil Operational Area Detailed Location Map.....	11
Figure 5 – Esker Operational Area Location Map.....	12
Figure 6 – Esker Operational Area Detailed Location Map.....	12

1. Preamble

This Abandonment and Restoration Plan (A&R) is in effect through the life of the currently being applied for Land Use Permit and Water Licence for MPH Consulting Limited's work on its Turquetil-Esker Drilling project and applies to the work areas that are proposed by MPH during their 2021-2022 exploration programs on the Turquetil-Esker Drilling Project area, Nunavut, located approximately 180 kilometres west (Henik Lake rented camp site) of Arviat, NU.

Questions or concerns regarding this Plan can be directed to Mr. Paul Sobie, President by phone at 647-988-0930 (office 416-365-0930) or email psobie@mphconsulting.com, or Mr. Graham Gill, Consulting Geologist by phone at 604 992-9674 or e-mail at gillgeol@hotmail.com.

2. Introduction

This A&R plan has been prepared for a proposed ground geophysical and drilling program within Nunavut on MPH's Turquetil-Esker Drilling Project in the Turquetil and Henik Lakes areas in the upcoming years.

3. Schedule

The final restoration of the drill sites will be completed by the time the program is fully completed and will be finished prior to the expiration of any land use permits and water licence unless renewals are applied for. As MPH practices progressive reclamation such as filling drill sumps, cutting off drill collars to ground level and removing garbage, equipment and empty fuel drums as the program progresses, the final restoration effort will be minimal.

4. Infrastructure (at existing Henik Lake Camp of Eskimo Point Lumber Supply)

Four-twelve 14' x 16' wooden-walled Prospector sleep tents
 One 32' x 14' kitchen building (insulated permanent structure)
 One 32' x 14' washroom/laundry building (insulated permanent structure)
 One 14' x 16' dry/storage building (insulated permanent structure)
 One 14' x 16' wooden core shack
 One 14' x 16' wooden utility shack
 One 28' x 14' Weatherhaven office tent
 One outhouse plus Pecto facilities for winter/spring use
 One generator shack
 Two heli-pads
 One incinerator
 One 12' x 24' Seacan storage shack
 One fuel cache with Spill Kit

5. Seasonal Shutdown

a) Buildings and Contents

All canvas tents will be removed from the frames and stored in the Seacan for the winter. Wooden structures (generator shack, latrine and tent frames) and Weatherhaven style tents will be kept secured during winter months. All empty propane and fuel drums will be removed from site at the end of each season. Generators will be drained, serviced and stored for the winter.

b) Water System

Pumps and hoses will be drained and dismantled. Pumps will be removed from site for servicing and storage. Hoses will be stored in the washroom/laundry room or for the winter months.

c) Fuel Caches and Chemical Storage

An inventory of all fuel caches will be made prior to seasonal shutdown/camp demobilization at the end of each season as well as a thorough inspection of all full drums. Empty drums will be constantly backhauled to Arviat/Churchill during the course of the program.

Chemicals will be stored in the dries within berms which are completely enclosed by plywood and secured over the winter months.

d) Waste

Combustible Waste: All combustible waste will be incinerated as the program progresses. All ash will be collected and disposed of in landfill site in Arviat (permission pending for all but metal and hazardous materials) or Churchill with authorization. The incinerator will be stored on site over the winter.

Non-combustible Waste: All non-combustible waste will be sent to Arviat/Churchill or Thompson via chartered aircraft to be disposed of by our contract expeditor. All carriers and receivers of this material will be informed of the need to register with the Government of Nunavut, Department of Environment as well as having the proper documentation in the form of a waste manifest. More details of this information can be found in Appendix IV of the company's Fuel Spill Contingency Plan. Currently MPH Consulting Limited is registered within both Nunavut and the NWT as Hazardous Waste producers.

Grey Water Sump: The sump will be inspected, marked and covered for the winter.

Black Water: Any latrine sump will be buried at the time of demobilization of the camp.

e) Drill Sites

The drill will be dismantled at the last drill collar and all equipment will be flown via helicopter to the Henik Lake airstrip for winter storage preparatory for 2022 program. Following completion in 2022, the drill and all ancillary equipment will be flown off-site to Churchill via Twin Otter, unless required for future years use in which case the Henik Lake airstrip will again be used for storage and project staging.

All drill sites will be inspected immediately upon completion of each drill hole. All waste will be collected and flown to camp for incineration or removal to an approved disposal location. All sumps will be backfilled and each drill collar will be cut off to ground level if the casing cannot be removed.

Photographs of each drill site will be taken at the completion of clean up at each site.

f) Contamination Clean Up

Any soil at the proposed camp or at the drill sites that has become contaminated will be treated as per the Fuel Spill Contingency Plan. All non-combustible waste will be sent to Arviat/Churchill via chartered aircraft to be disposed of by our contract expeditor. All carriers and receivers of this material will be informed of the need to register with the Government of Nunavut, Department of Environment as well as having the proper documentation in the form of a waste manifest. More details of this information can be found in Appendix IV of the company's Fuel Spill Contingency Plan. Currently MPH Consulting Limited is registered within both Nunavut and the NWT as Hazardous Waste producers.

g) Inspection and Documentation

A complete inspection of all disturbed areas (drill sites, camp and fuel caches) will be conducted prior to seasonal closure of the project with a full inventory taken for each location. A photographic record will be kept of each work area and campsite before, during and after the project is complete.

6. Final Abandonment and Restoration

a) Buildings and Contents

As the Henik Lake Camp of EPLS is a permanent camp, it will be winterized as described in 5a) above.

b) Equipment

All equipment including generators and pumps will be removed from the project operational sites at Turquetil and Esker drilling areas.

c) Fuel Caches and Chemical Storage

All fuel drums and chemical containers will be removed. All sites that contained cached fuel will be inspected and any contamination will be dealt with according to the Fuel Spill Contingency Plan. All debris will be removed. Final photos of fuel caches and storage sites will be supplied.

d) Sumps

All sumps will be inspected and backfilled. Final photos will be taken and supplied to the NWB, NIRB and KIA.

e) Camp Site

A final inspection of the camp site will be made to ensure no waste remains. Final photos will be taken and supplied to the NWB, NIRB and KIA.

f) Drill Sites

Following completion in 2022, the drill and all ancillary equipment will be flown off-site to Churchill via Twin Otter unless required for future years use. All drill sites will be inspected immediately upon completion of each drill hole. All waste will be collected and flown to camp for incineration or removal to an approved disposal location. All sumps will be backfilled and each drill collar will be cut off to ground level if the casing cannot be removed.

Photographs of each drill site will be taken at the completion of clean up at each site.

Photographs of each drill site will be taken at the completion of clean up at each site and supplied to the NWB, NIRB and KIA.

g) Contamination Clean Up

Any contamination will be treated as per the Fuel Spill Contingency Plan. Any contamination and subsequent clean-up will be documented with photographs. All non-combustible waste will be sent to Arviat/Churchill via chartered aircraft to be disposed of by our contract expeditor. All carriers and receivers of this material will be informed of the need to register with the Government of Nunavut, Department of Environment as well as having the proper documentation in the

form of a waste manifest. More details of this information can be found in Appendix IV of the company's Fuel Spill Contingency Plan.

h) Aircraft Landing Strips

The landing strip utilized at the Henik Lake Camp is located on an esker composed of coarser sand and gravel and is well drained. The strip is used for supplying fuel and equipment onward to drill sites by helicopter as necessary. Due to the coarse nature of the esker material only minimal rutting will occur and will be repaired by the freeze/thaw cycles. Any backfilling of ruts on these areas will also occur upon final abandonment and restoration if necessary.

i) Inspection and Documentation

A complete inspection will be conducted of all areas prior to closure. Photographs will be taken to document the conditions of each site prior to final demobilization for use in the final plan/report. All appropriate agencies will be contacted once final clean-up is complete.

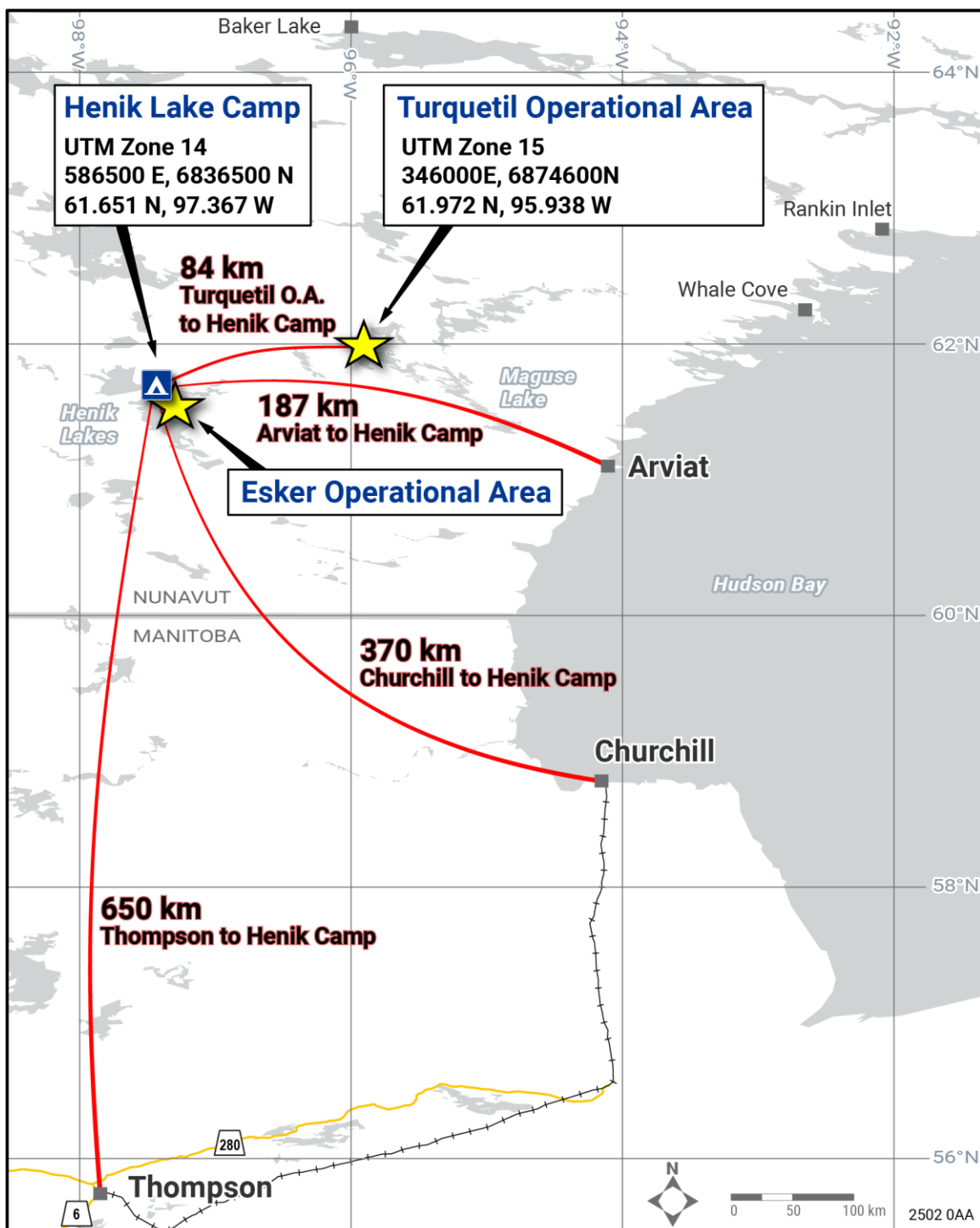


Figure 1 – General Location Map

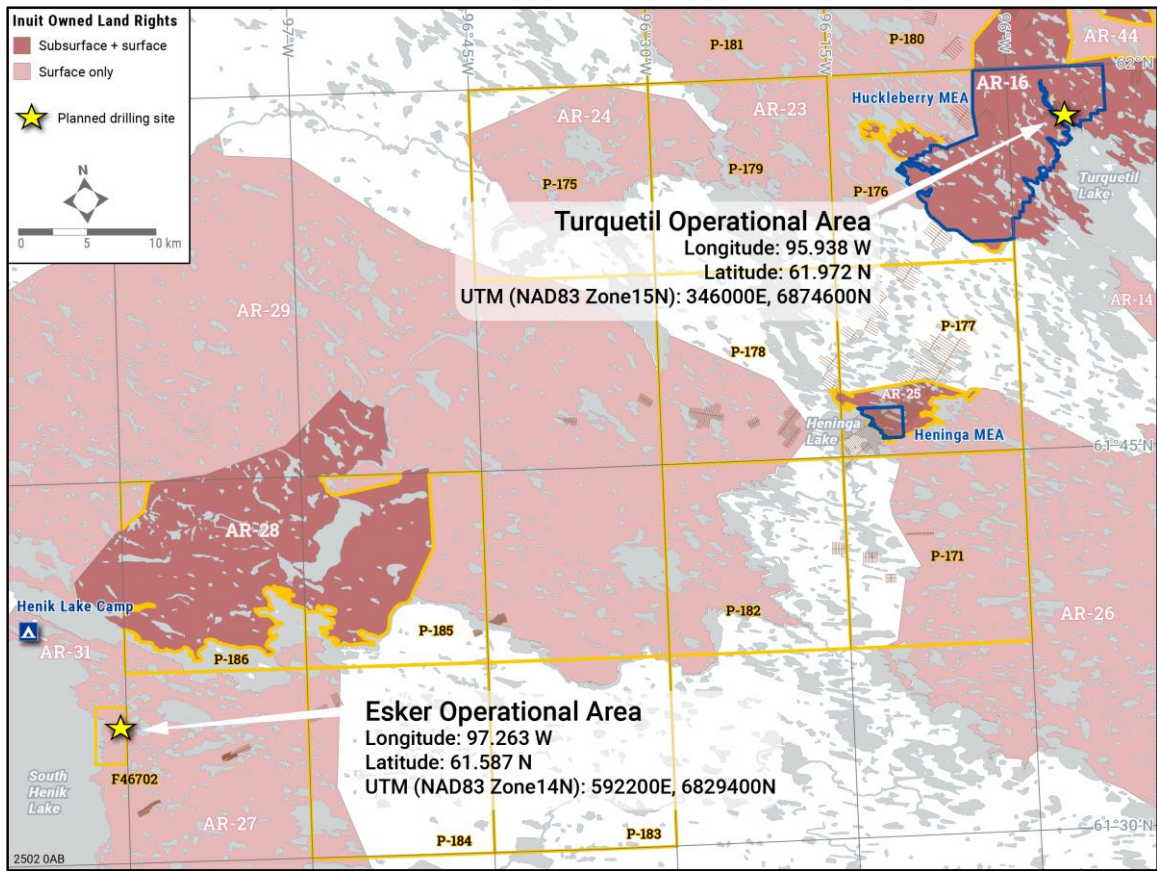


Figure 2 – Detailed Location Map for Drilling Operations

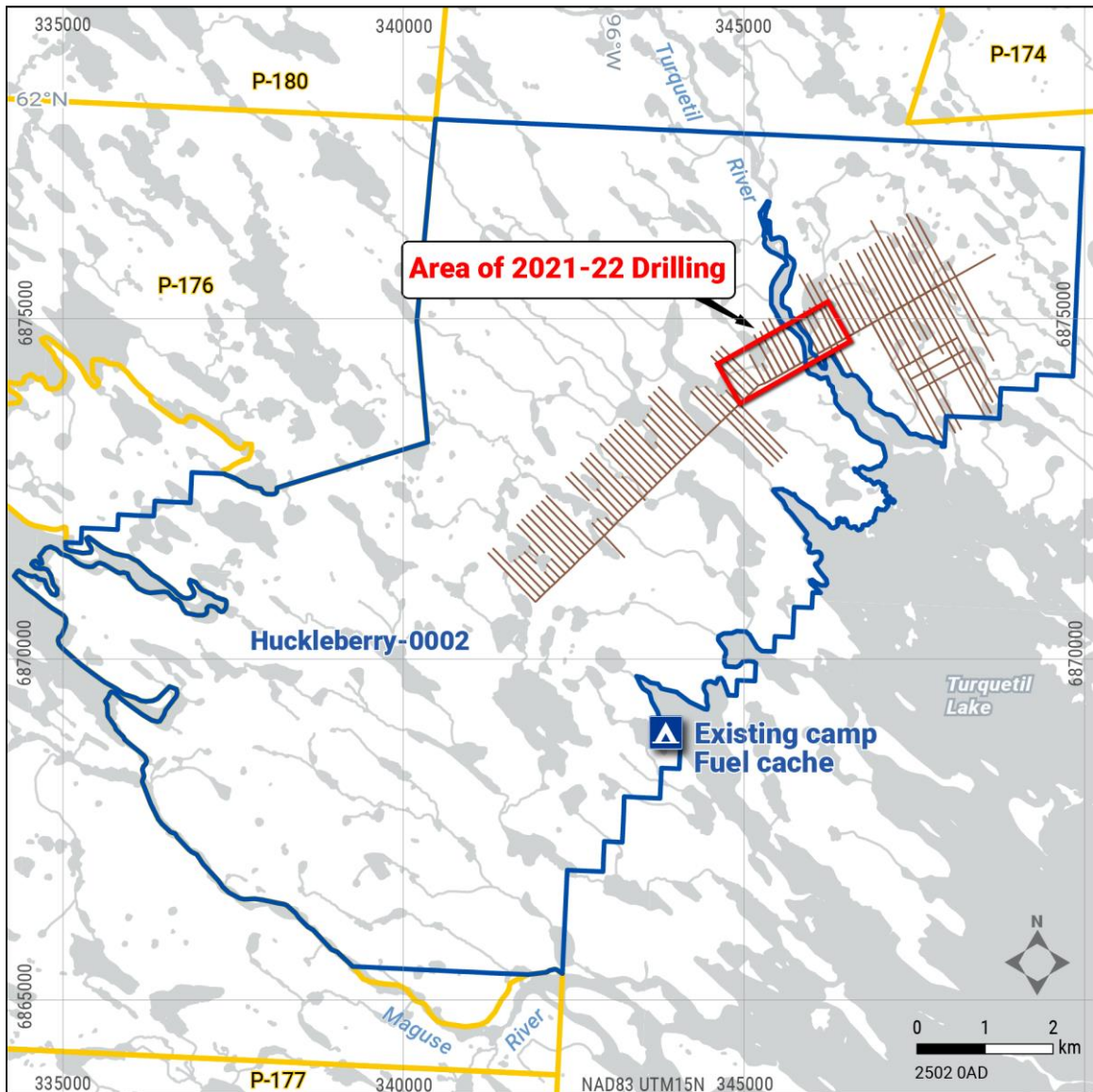


Figure 3 – Turquetil Operational Area Location Map

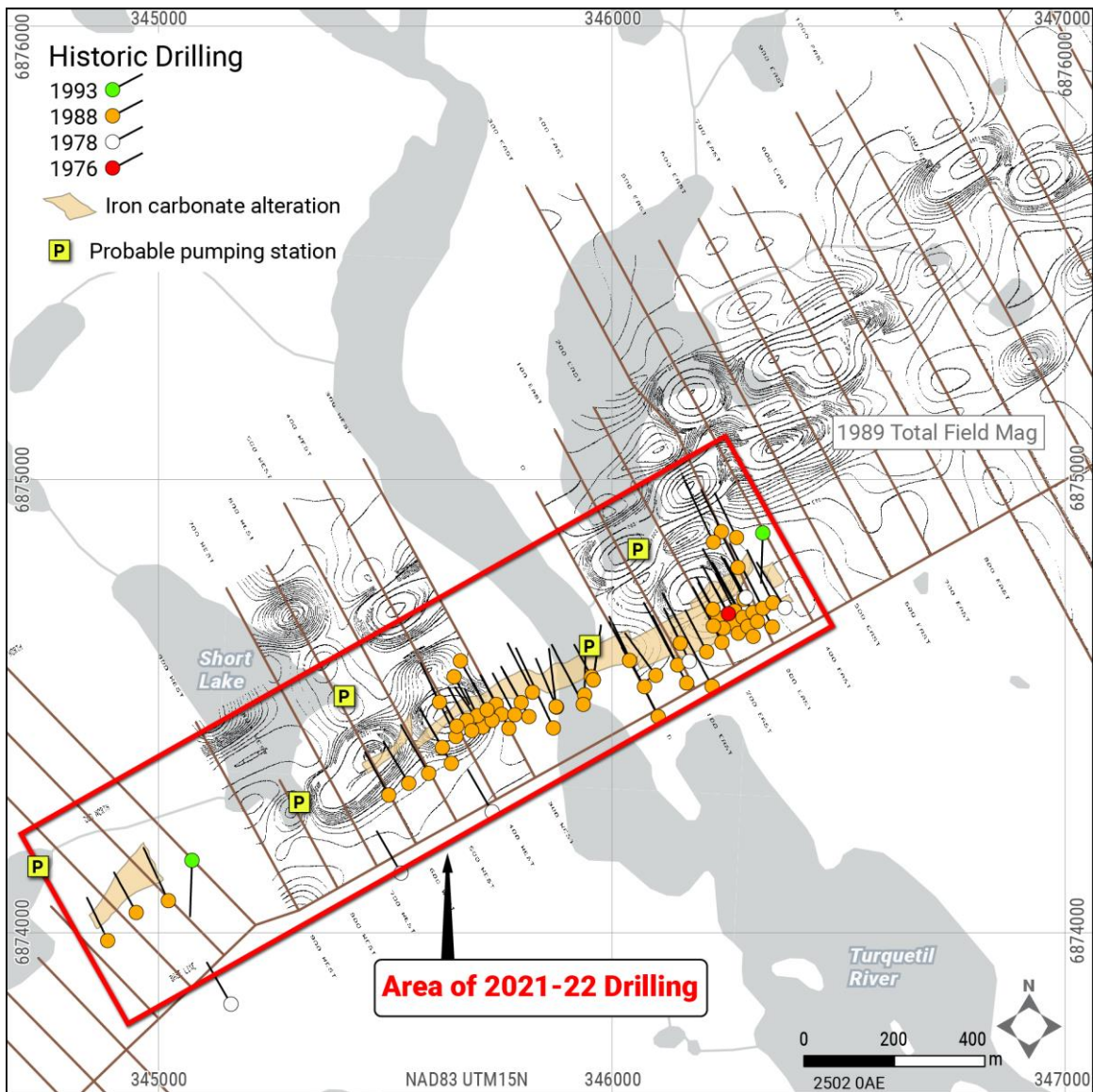


Figure 4 – Turquetil Operational Area Detailed Location Map

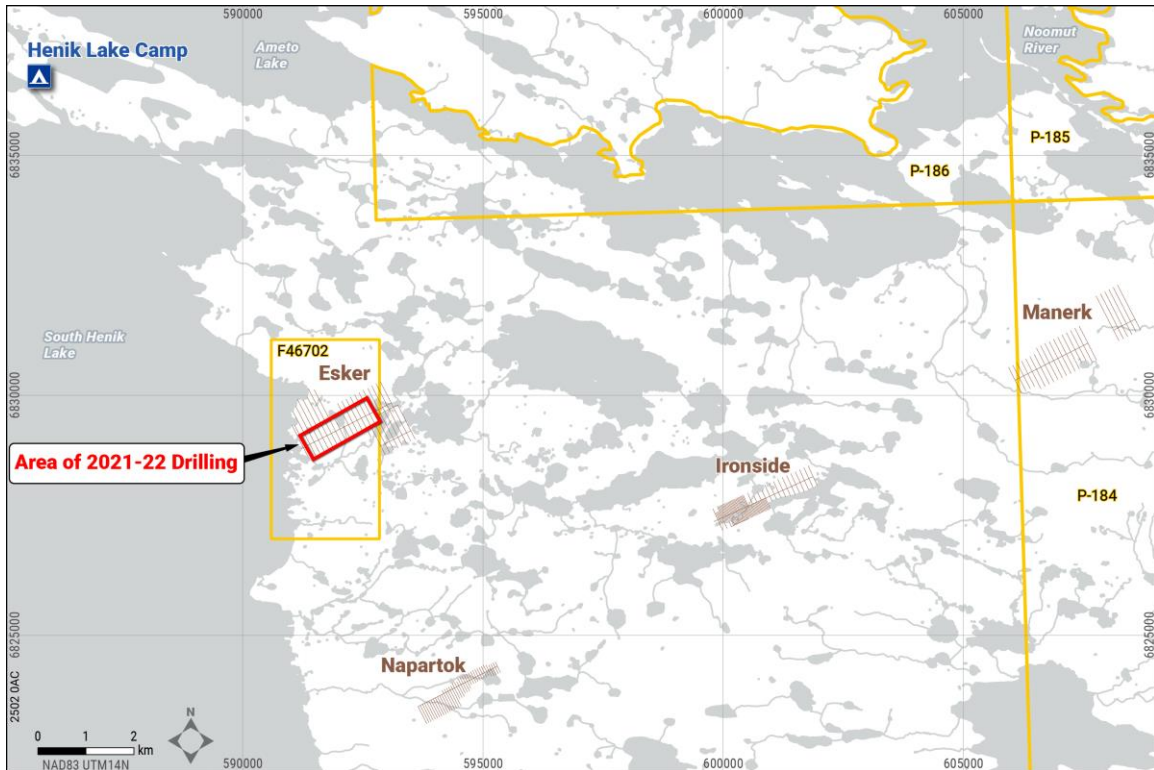


Figure 5 – Esker Operational Area Location Map

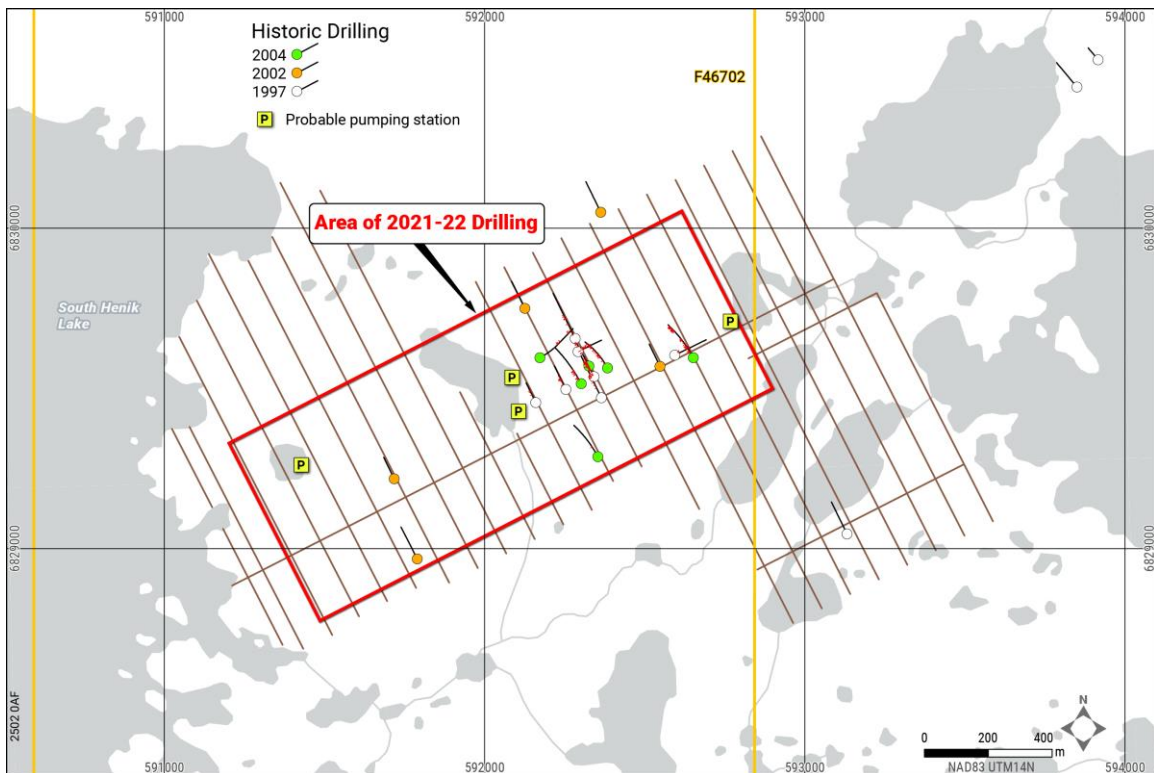


Figure 6 – Esker Operational Area Detailed Location Map