

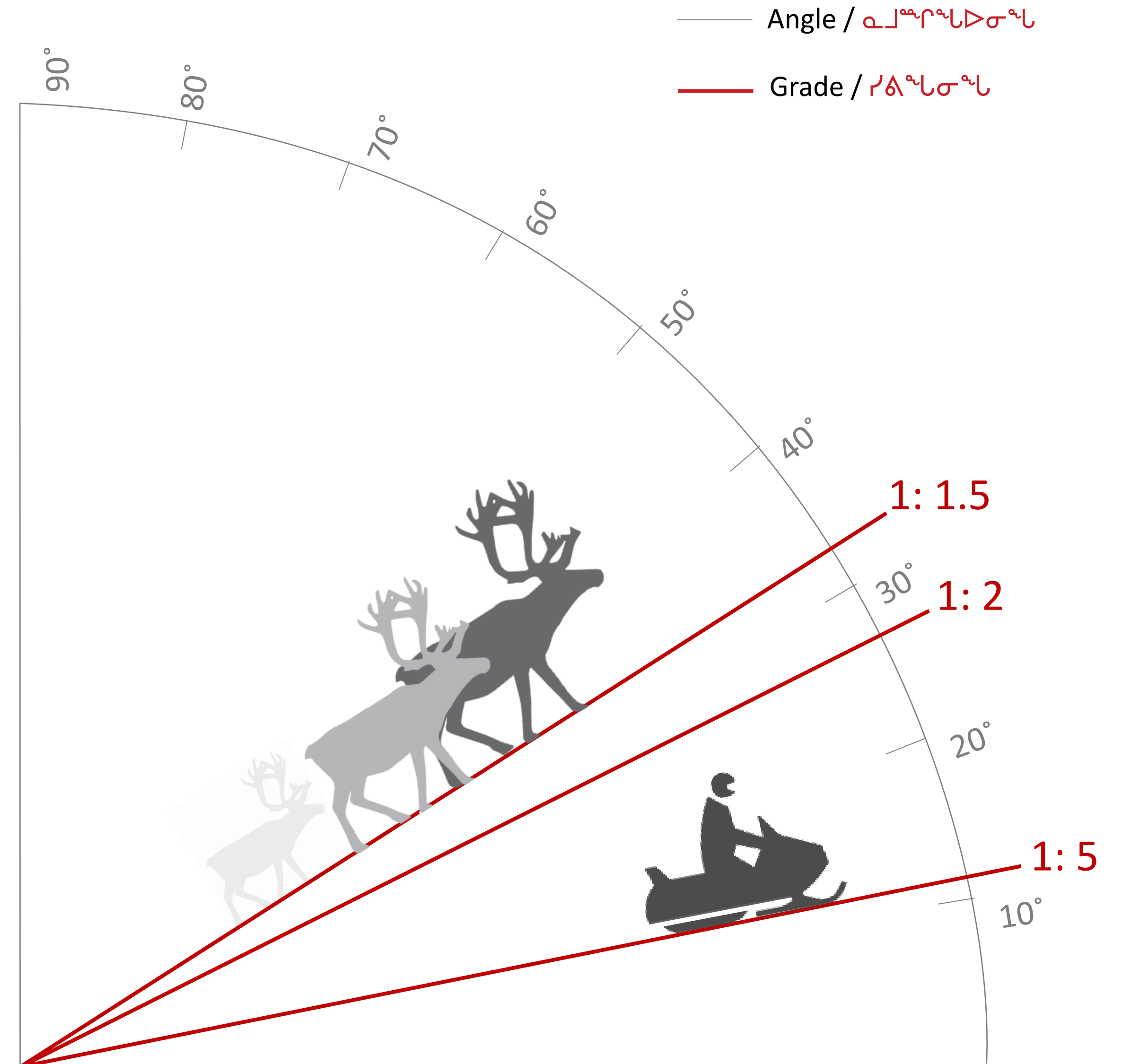
Crossing Slope Ratios

Δᓃᓐᓂᓐᓂᓐ ᓂᓐᓂᓐᓂᓐ ᓂᓐᓂᓐᓂᓐ



Photo depicts a 1:1.5 slope

ᓂᓐᓂᓐᓂᓐ ᓂᓐᓂᓐᓂᓐ 1:1.5 ᓂᓐᓂᓐᓂᓐ ᓂᓐᓂᓐᓂᓐ 1:1.5-ᓂᓐᓂᓐᓂᓐ



כ"ב כ"ג אב אב

- [illegible]





www.baffinla











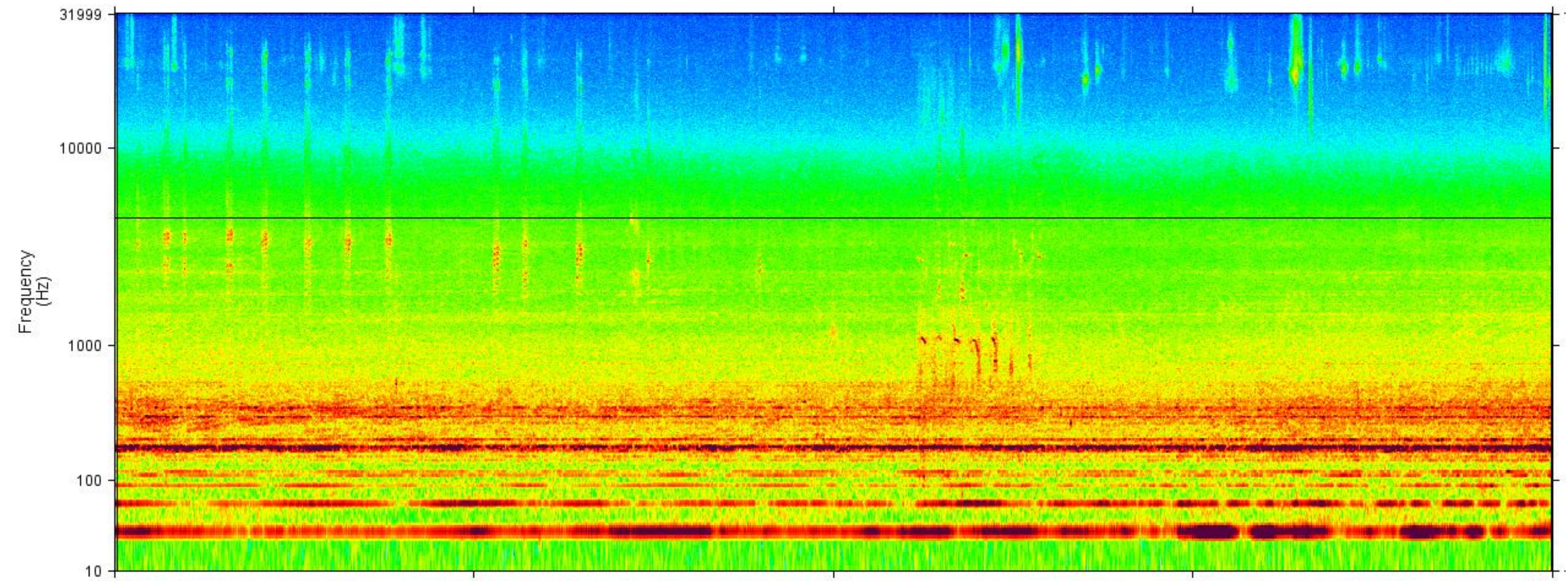


Shipping Activity Overview - # of Vessels

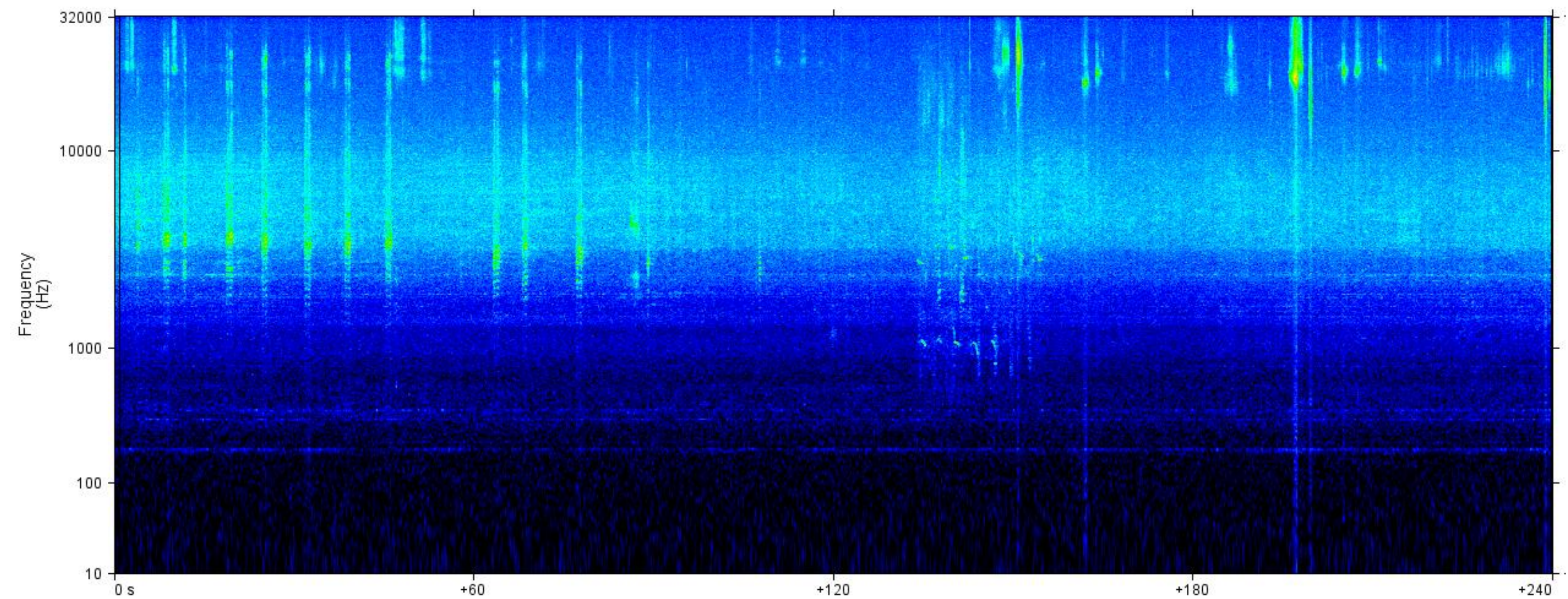
ᐅᐱᐸᐸᐸᐸᐸᐸ ᐅᐱᐸᐸᐸᐸᐸᐸᐸᐸ ᐸᐸᐸᐸᐸᐸᐸᐸᐸᐸ - ᐅᐸᐸᐸᐸᐸᐸ ᐅᐱᐸᐸᐸᐸᐸᐸ

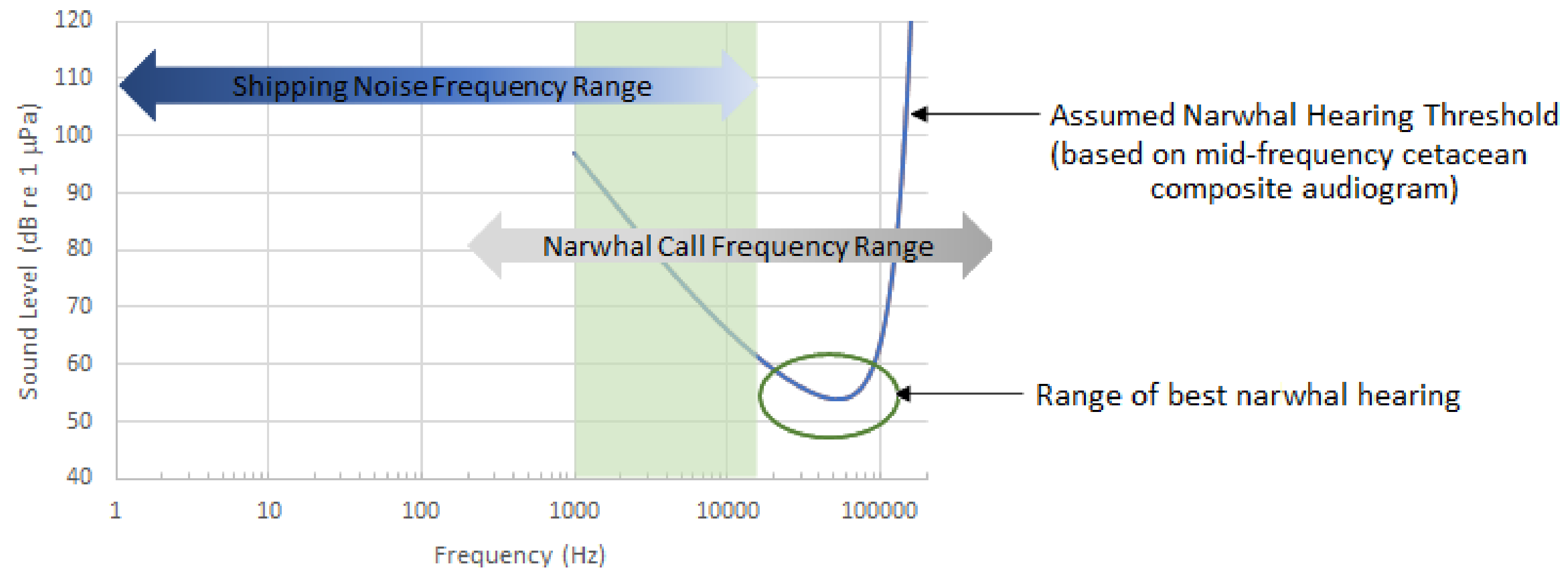
Vessel (Phase 2) ᐅᐱᐸᐸᐸᐸᐸᐸᐸ (ᐸᐸᐸᐸᐸᐸᐸᐸᐸᐸᐸᐸᐸᐸᐸᐸ 2-ᐱ)	July / ᐸᐸᐸᐸ	August / ᐸᐸᐸᐸᐸ	September / ᐸᐸᐸᐸ	October / ᐸᐸᐸᐸᐸᐸ	Total / ᐸᐸᐸᐸᐸᐸᐸ
Ore Carriers ᐅᐸᐸᐸᐸᐸᐸᐸ ᐅᐱᐸᐸᐸᐸᐸᐸᐸᐸᐸᐸ	22	62	60	32	176
Other Project Vessels ᐸᐸᐸᐸᐸᐸ ᐸᐸᐸᐸᐸᐸᐸᐸᐸᐸ	12	6	6	8	32
Total ᐸᐸᐸᐸᐸᐸᐸᐸ	34	68	66	40	208
Daily Avg/Mth ᐸᐸᐸᐸᐸᐸᐸᐸᐸᐸᐸᐸᐸᐸ ᐸᐸᐸᐸᐸᐸᐸᐸᐸᐸᐸᐸᐸᐸ	2.3	2.2	2.2	1.3	1.7

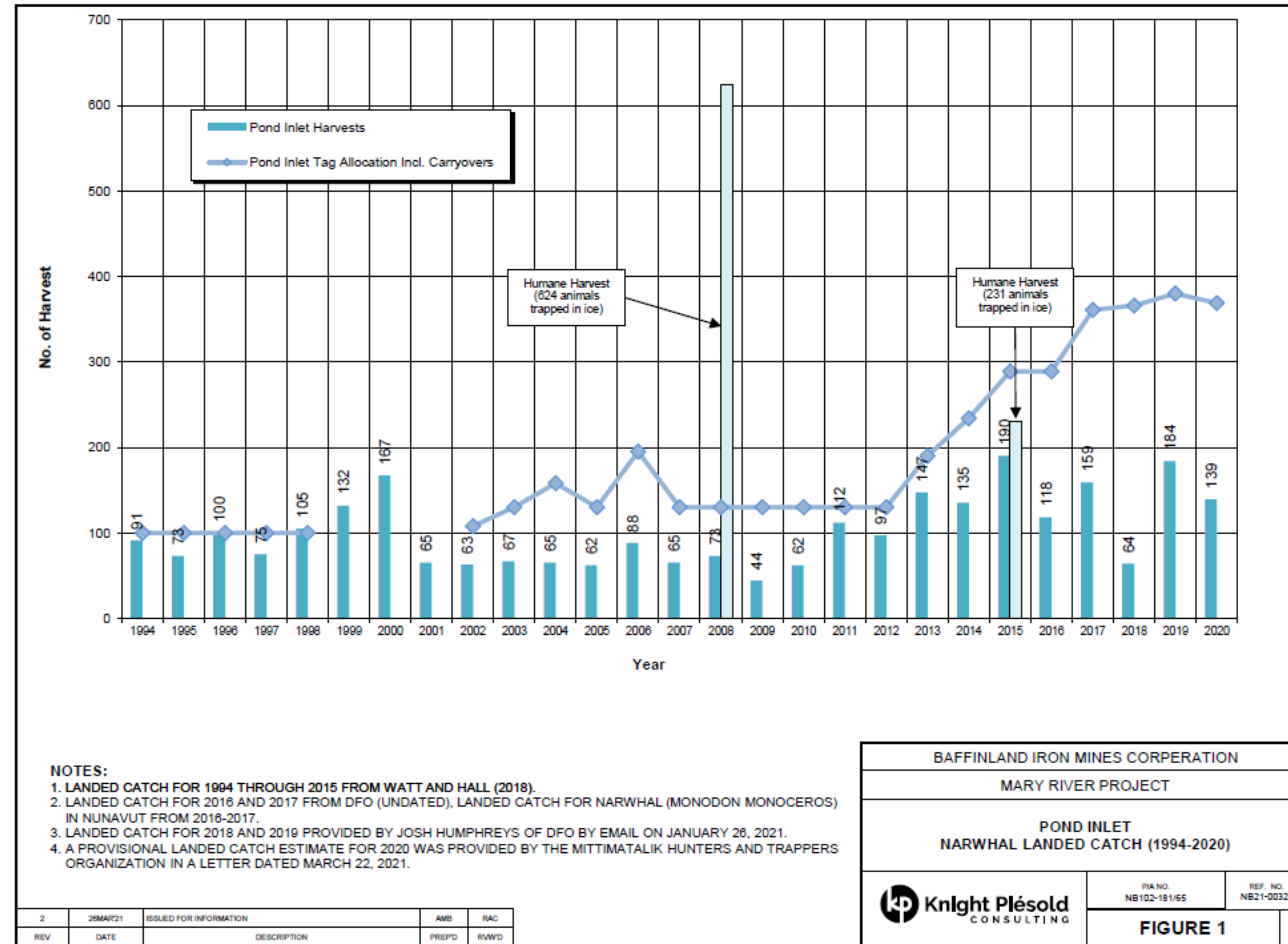
Unfiltered Sound Levels



Sound Levels Filtered for
Narwhal Hearing

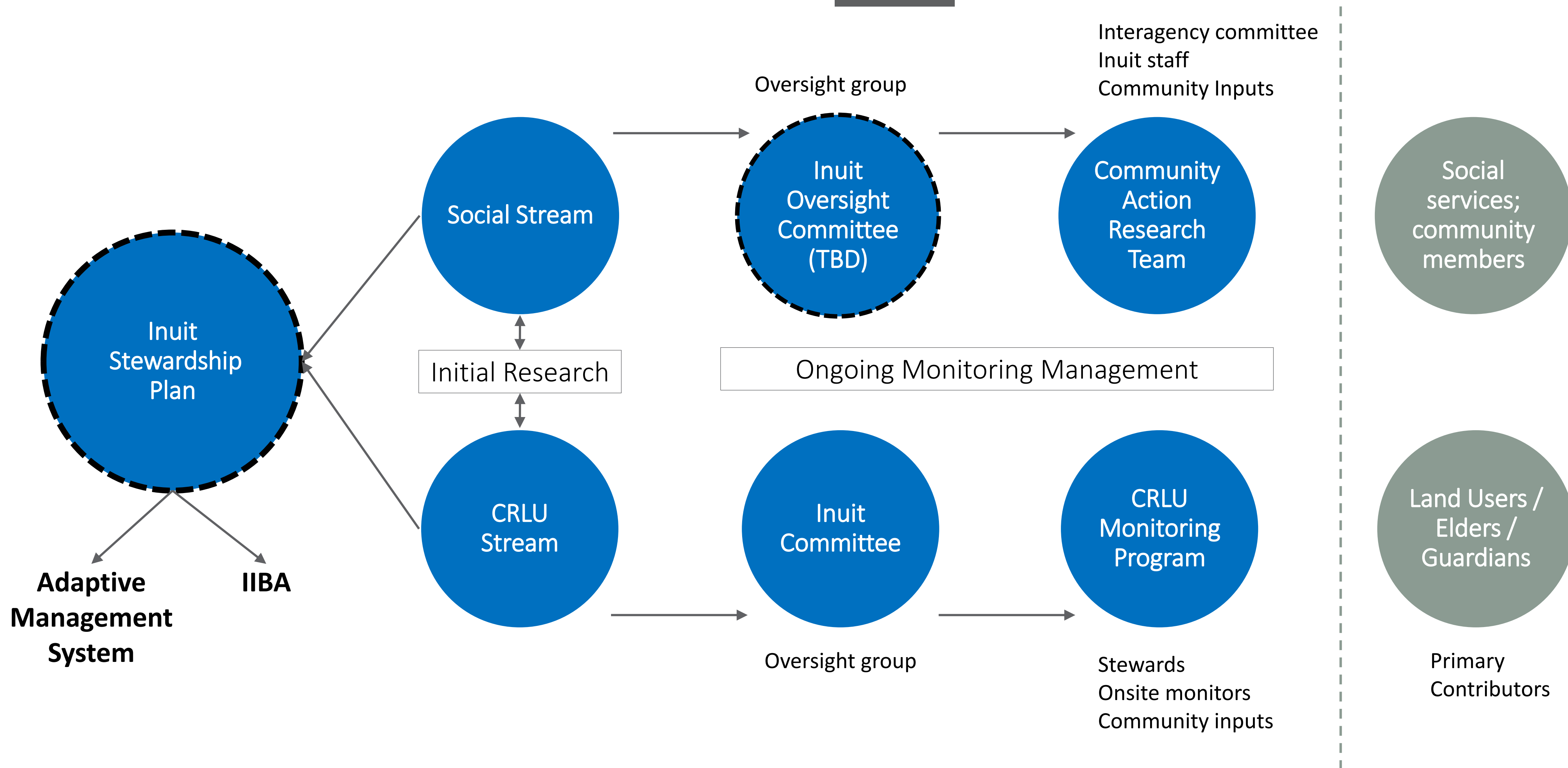






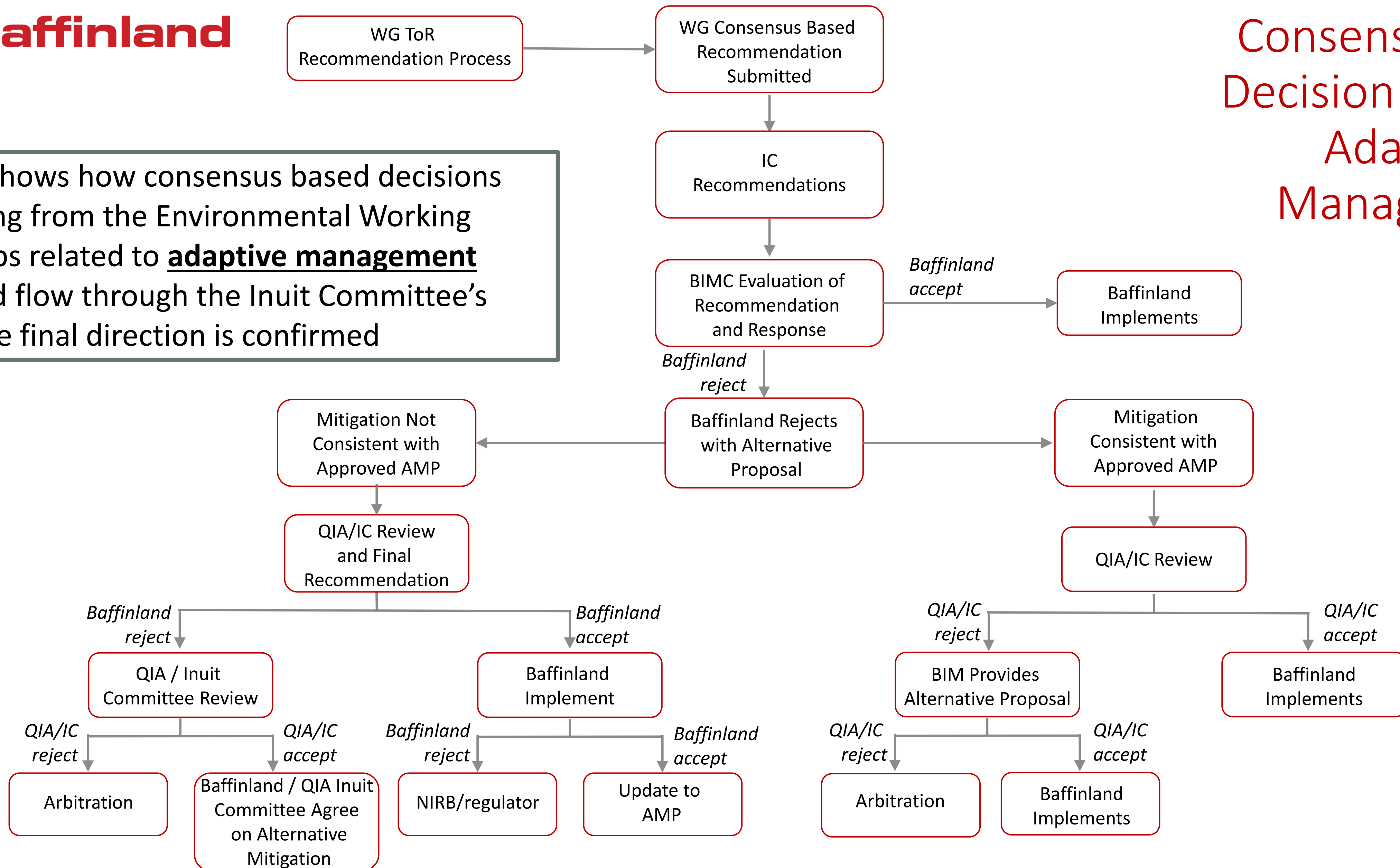


Inuit Stewardship Plan



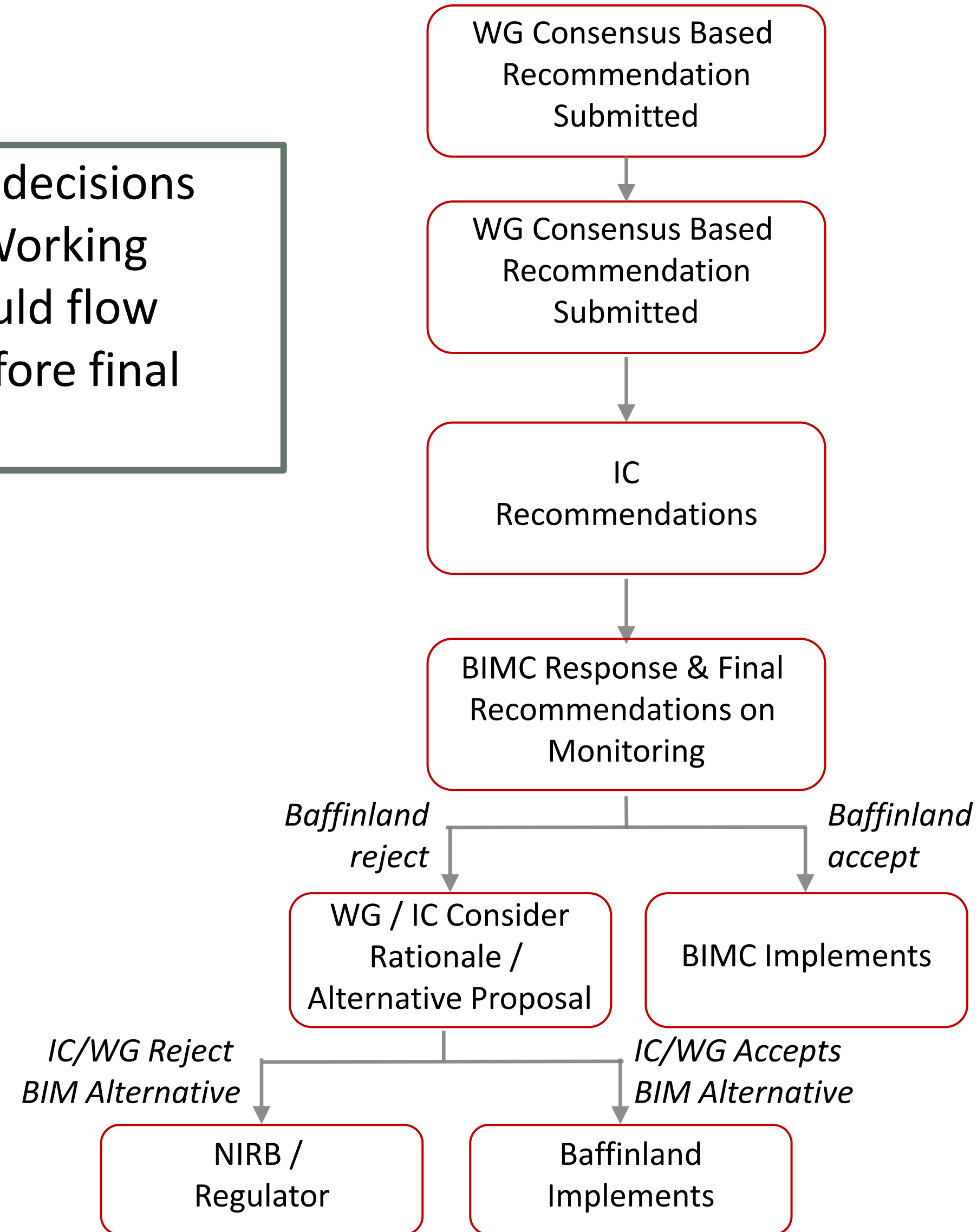


This shows how consensus based decisions coming from the Environmental Working Groups related to **adaptive management** would flow through the Inuit Committee's before final direction is confirmed

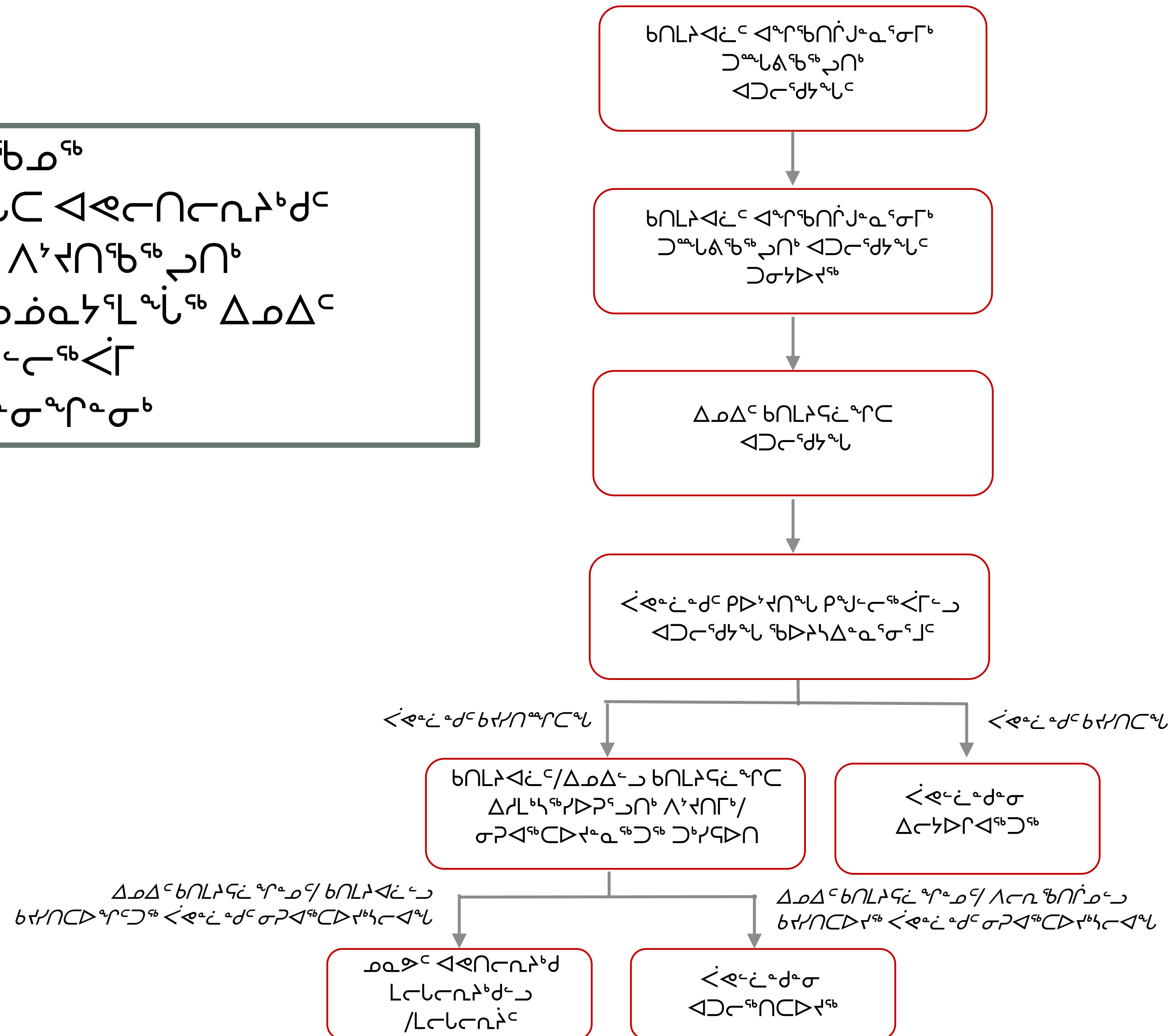


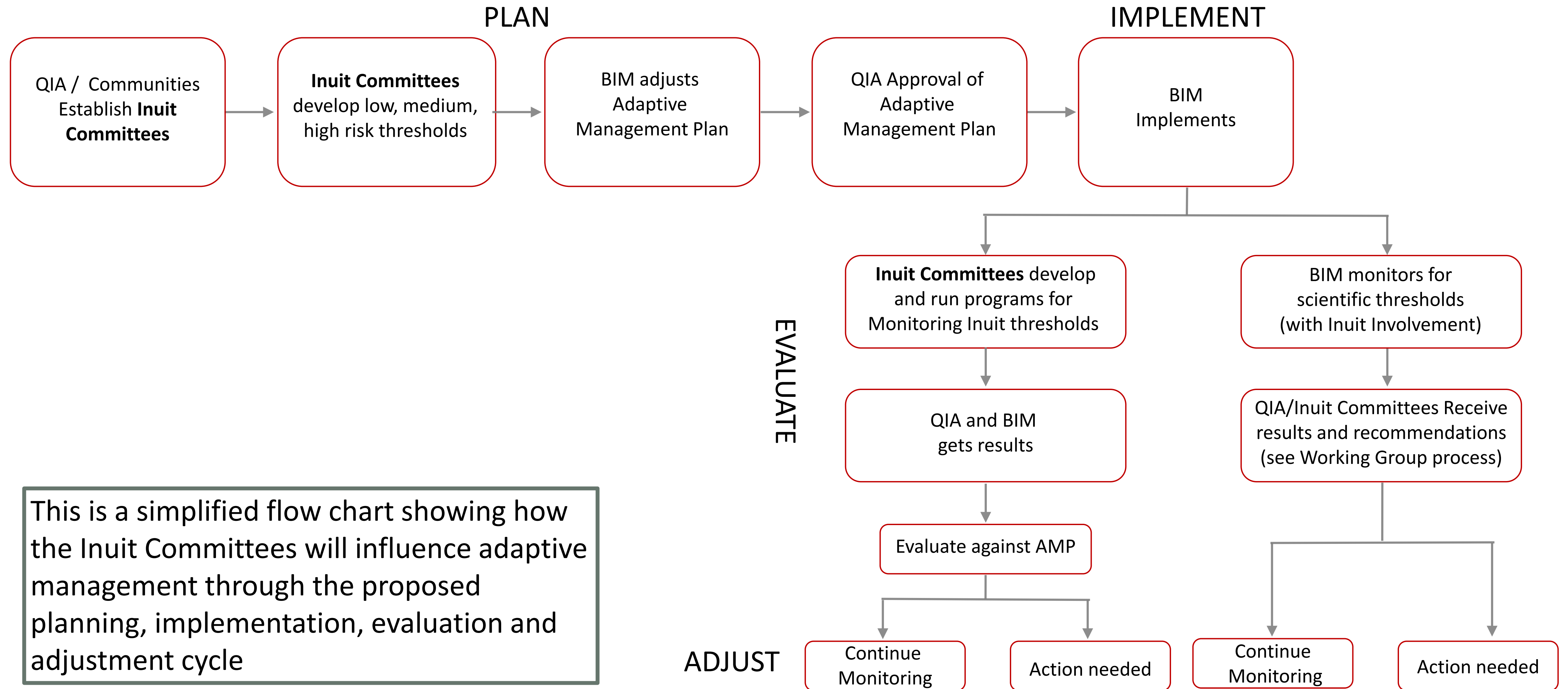
[illegible]

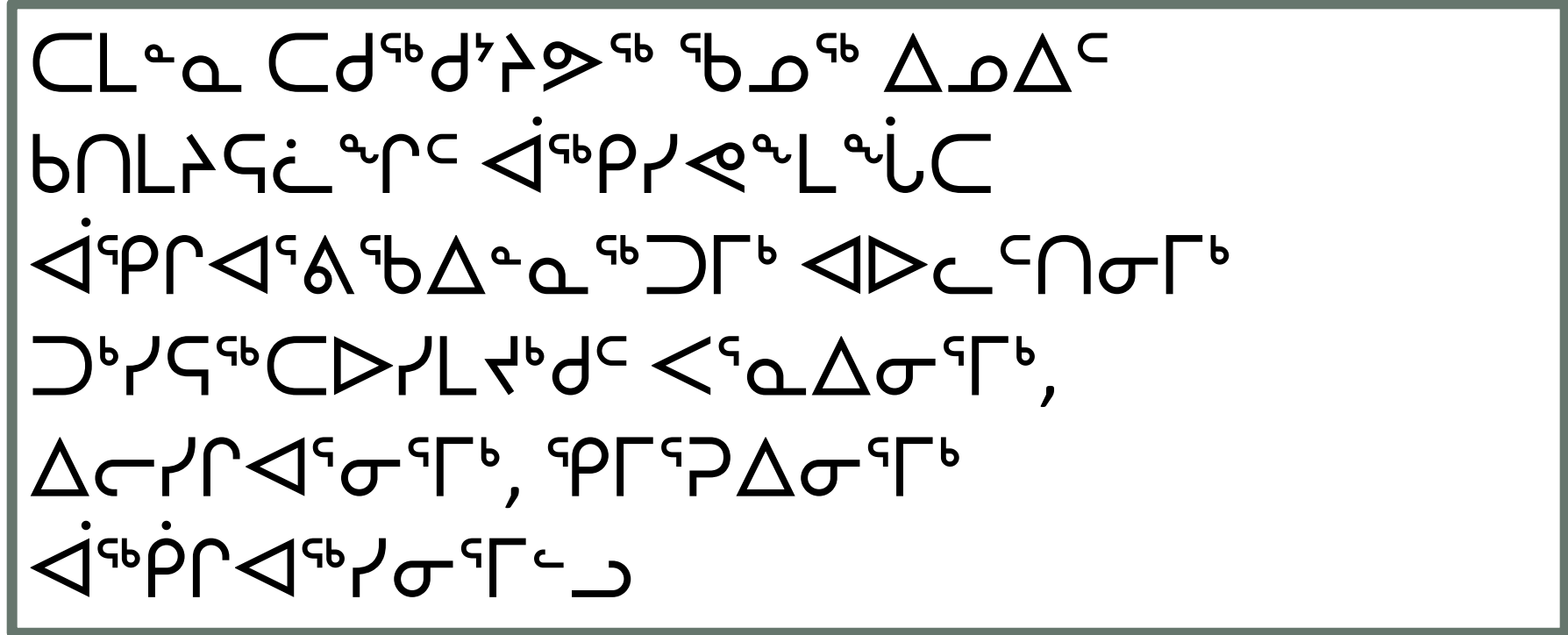
This shows how consensus based decisions coming from the Environmental Working Groups related to **monitoring** would flow through the Inuit Committee's before final direction is confirmed



Consensus Based Decision Making in Monitoring

[illegible][illegible]





Adaptive Management – Moderate and High Risk Thresholds Set

Marine Wildlife Monitoring

