

Weight & Dimensions

Discovery I Fly Drill

Max for Helicopter Full Fuel		1,800	Helicopter		AS350B2
Max for Helicopter 30% Fuel		2,000	Fly Distance		8 4
Pcs Section		Weight Lbs	Dimensions (in)		
			Length	Width	Height
Assembled Drill Only - shipping		6,300	146	74	86
1	Drill Engine	1,185	42	28	60
2	Drill Console w/ 3/4 hyd tank	1,040	48	29	66
	Drill Mast & Head	2,030	125	42	60
3	Drill - Mast only	1,240	125	42	60
	- Mast Support	70	76	10	10
4	Drill Head Only	730	42	27	20
5	Drill Frame	780	132	74	54
	Drill Base Frame	500	132	74	8
	Drill Winch	280	30	20	20
6	Drill Water Tank & Pump	790	76	30	48
	- Water Pump	310	28	26	20
	- Water Tank	480	76	30	28
7	Drill Alum Mast & Leg (put with frame?)	165	183	19	24
	Drill Mast - Alum	135	183	19	24
	Drill Stiff Leg	30	150	10	4
8	Drill Barriers (guards) - yellow & Blue Engine	370	70	50	10

9 Drill Shack - 20' x 16' x 7'	1,500	240	192	86
10 Supply Pump, Engine & Drip Pan	980	72	57	42
Supply Pump & Kubota Engine	650	40	32	32
Drip Pan 10"	330	72	57	20
11 Generator & Drip Pan	520	72	57	33
Generator 5000	190	27	23	23
Drip Pan 10"	330	72	57	20
12 Fuel Tank & Generator & Drip Pan	1,350	72	57	33
Fuel - EMPTY	300			
Kubota Generator	720			
Drip Pan 10"	330	72	57	20
13 Fuel Tank & Generator & Drip Pan	1,775	72	57	33
Fuel Tank	300			
Fuel - 1/2 full 225 L	425			
Kubota Generator	720			
Drip Pan 10"	330	72	57	20
14 Fuel Tank & Generator & Drip Pan	2,200	72	57	33
Fuel Tank	300			
Fuel - full 450 L	850			
Kubota Generator	720			
Drip Pan 10"	330	72	57	20
15 Fuel Tank & Frame - Empty Tank	500	47	30	26
Fuel - EMPTY				
Fuel Tank & Frame - empty	500	47	30	26
16 Fuel Tank & Frame - Full Tank	1,350	47	30	26
Fuel Full 450 L - diesel	850			
Fuel Tank & Frame - empty	500	47	30	26

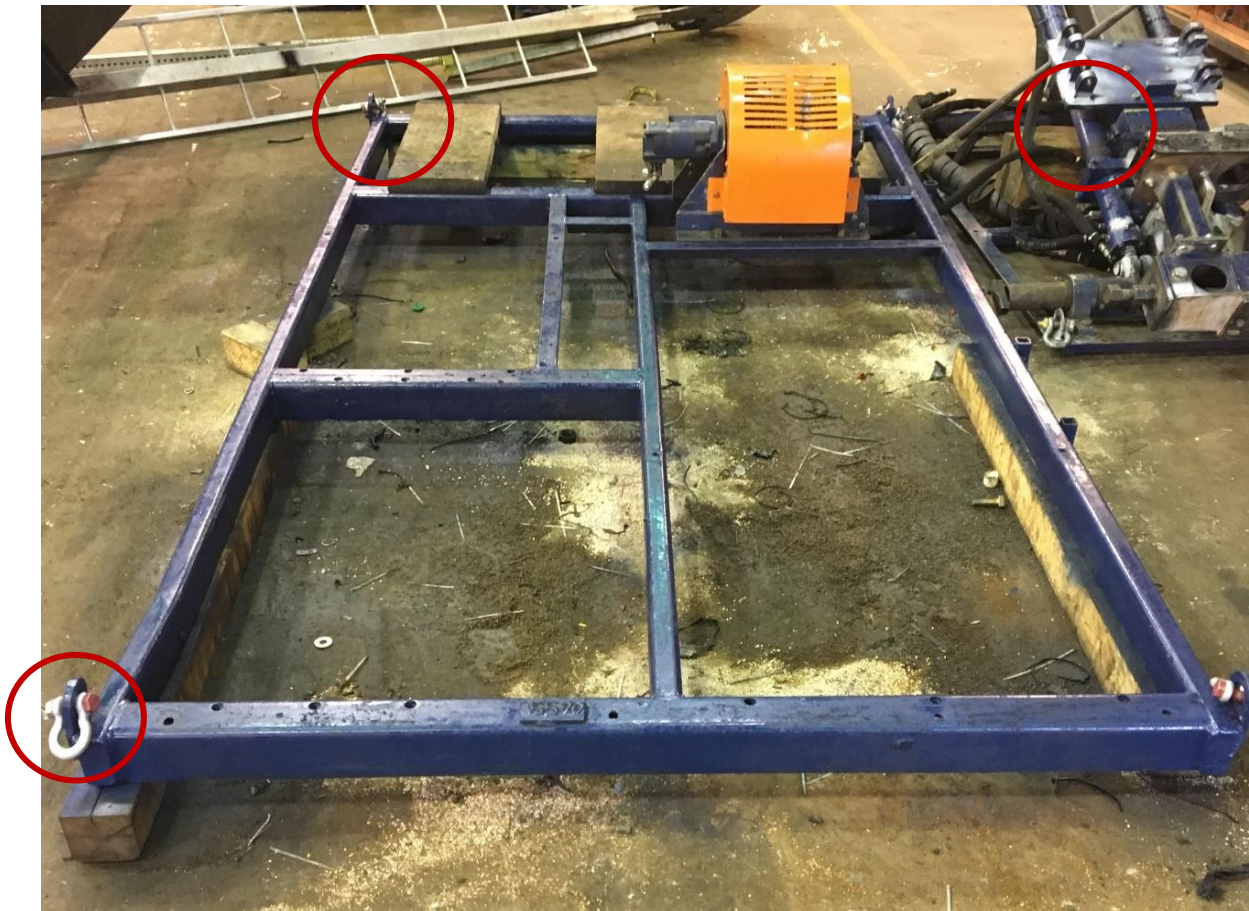
17 Red Basket 1 - Emergency - max 1,000	1,375	70	57	20
Basket - empty	375	70	57	20
Emergency Supplies, Tent, Water	1,000			
18 Red Basket 2 - Gear - max 1,000 cap	1,375	70	57	20
Basket - empty	375	70	57	20
Drilling Gear - Max	1,000			
19 Alum Basket - Tools	1,220	80	32	26
Basket - empty	220	80	32	26
Tools - max 1,000 lbs	1,000			
20 Steel Basket - White Large - Supplies	1,220	72	48	38
Basket - empty	220	72	48	38
Supplies - max 1,000 lbs	1,000			
21 Rods, core barrels				
22 Timbers 6x6x14' for Base		14'	24"	24"
23 Work Boxes - Fully	500	36	20	24
Job Site tool Chest	150	36	20	24

Fully Assembled Drill



DRILL PIECES

Pcs	Section	Weight	Dimensions (in)		
		Lbs	Length	Width	Height
5	Drill Frame	780	132	74	54



DRILL PIECES

Pcs	Section	Weight	Dimensions (in)		
		Lbs	Length	Width	Height
	Drill Water Tank & Pump	790	76	30	48



DRILL PIECES

Pcs	Section	Weight	Dimensions (in)		
		Lbs	Length	Width	Height
	Drill - Mast only	1240	125	42	60



DRILL PIECES

Pcs	Section	Weight	Dimensions (in)		
		Lbs	Length	Width	Height
	Drill Head Only	730	42	27	20



DRILL PIECES

Pcs	Section	Weight	Dimensions (in)		
		Lbs	Length	Width	Height
	Drill Engine	1185	42	28	60



DRILL PIECES

Pcs	Section	Weight	Dimensions (in)		
		Lbs	Length	Width	Height
	Drill Console w/ 3/4 hyd tank	1040	48	29	66



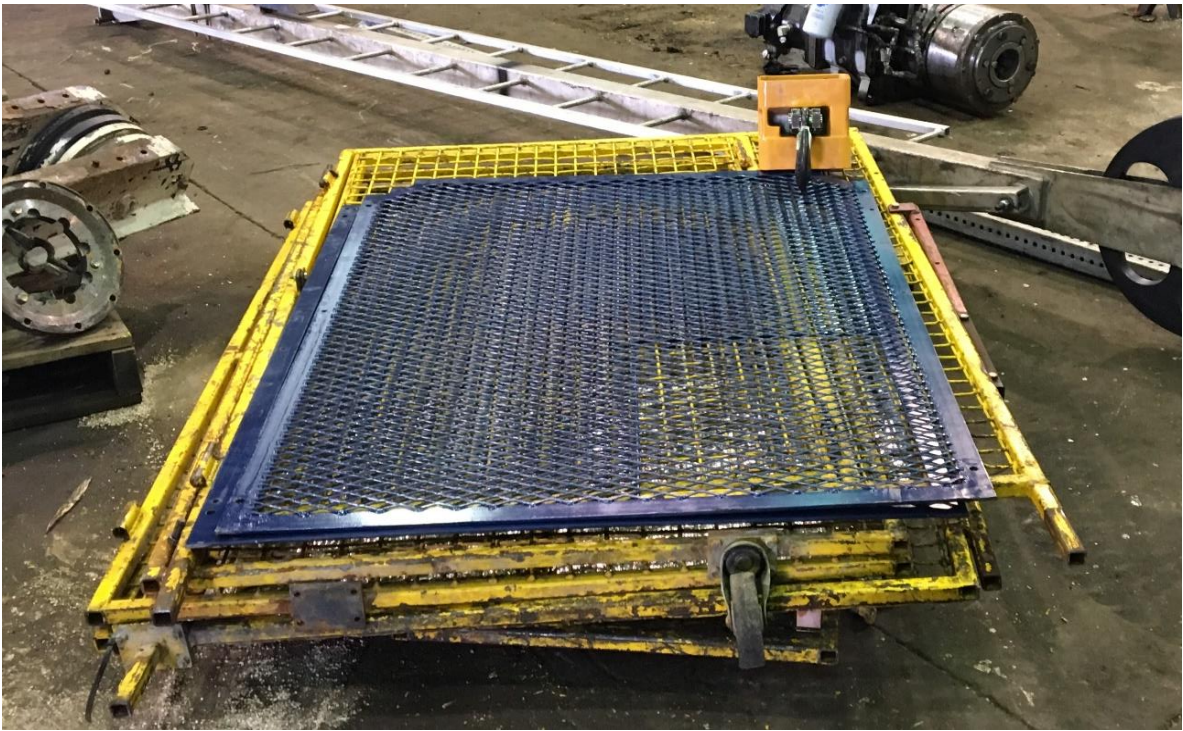
DRILL PIECES

Pcs	Section	Weight	Dimensions (in)		
		Lbs	Length	Width	Height
	Drill Alum Mast & Leg (put with frame?)	165	183	19	24



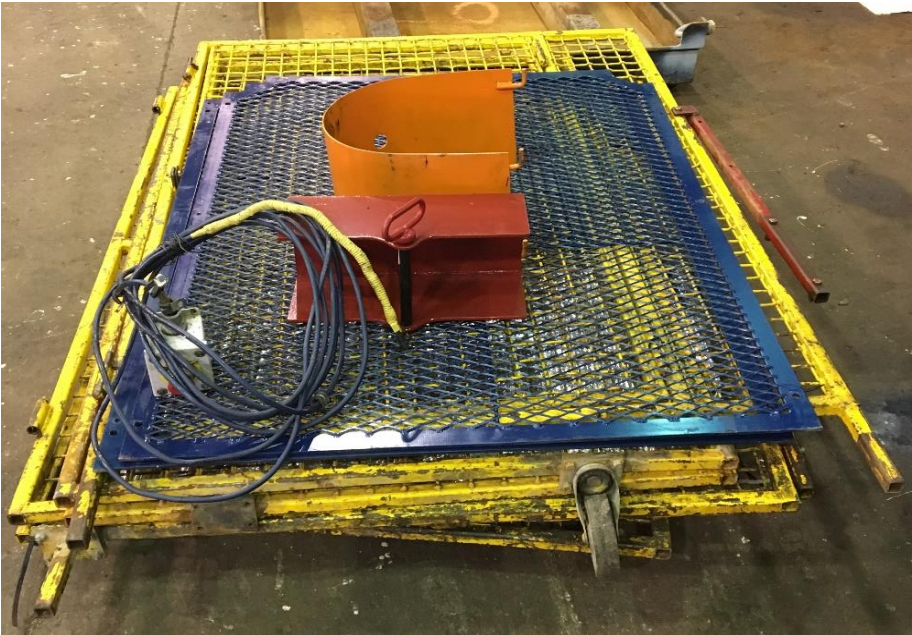
DRILL PIECES

Pcs	Section	Weight	Dimensions (in)		
		Lbs	Length	Width	Height
	Drill Barriers (guards) - yellow & Blue Engine	370	70	50	10



Drill Assembled for Shipping

Pcs	Section	Weight	Dimensions (in)		
		Lbs	Length	Width	Height
	Drill Assemble & 2 pieces	6,300	144	74	90



Drill Shack

Pcs	Section	Weight	Dimensions (in)		
		Lbs	Length	Width	Height
14	Drill Shack	1,500	240	192	86
			21'	16'	7'



Pcs	Section	Weight	Dimensions (in)		
		Lbs	Length	Width	Height
	Fuel Tank & Frame - Full Fuel	1,350	47	30	26
	Fuel Tank & Frame - Empty	500	47	30	26



Supply Pump, Engine Assembly

Pcs	Section	Weight	Dimensions (in)		
		Lbs	Length	Width	Height
	Supply Pump, Engine & Drip Pan	1000	72	57	42
	Supply Pump, Engine	670	40	32	32
	Drip Pan	330	72	57	42



Pcs	Section	Weight	Dimensions (in)		
		Lbs	Length	Width	Height
2	Basket - Red - Max 1,000 cap	1,375	70	57	20
	Basket - Red - Empty	375	70	57	20
	Max 1,000 cap	1,000			



Pcs	Section	Weight	Dimensions (in)		
		Lbs	Length	Width	Height
1	Basket - White	1,220	70	57	20
	Basket - White - Empty	220	70	57	20
	Max 1,000 cap	1,000			



Pcs	Section	Weight	Dimensions (in)		
		Lbs	Length	Width	Height
1	Basket - Aluminum	1,220	80	32	26
	Basket - Alum - Empty	220	80	32	26
	Max 1,000 cap	1,000			



Pcs Section	Weight	Dimensions (in)		
	Lbs	Length	Width	Height
18 Fuel Tank & Generator & Drip Pan	1,350	72	57	33
Fuel - EMPTY	300			
Kubota Generator	720			
Drip Pan 10"	330	72	57	20
18 Fuel Tank & Generator & Drip Pan	1,775	72	57	33
Fuel Tank	300			
Fuel - 1/2 Full = 225 litres	425			
Kubota Generator	720			
Drip Pan 10"	330	72	57	20
18 Fuel Tank & Generator & Drip Pan	2,200	72	57	33
Fuel Tank	300			
Fuel Full 450 L - diesel	850			
Kubota Generator	720			
Drip Pan 10"	330	72	57	20



Pcs	Section	Weight	Dimensions (in)		
		Lbs	Length	Width	Height
27	Work Boxes - Fully Job Site tool Chest	500	36	20	24
		150	36	20	24



Technical Specs			
Colour	Blue	Storage Capacity	8.3 cu. ft.
Gauge	16	Casters Included	No
Features	Forklift Access	Use With Caster No.	WSW24Y933, WSW24Y934
Depth	20"	Padlock Shackle Max. Dia.	3/8"
Height	23-3/4"	Number of Shelves	0
Handle Type	(2) Folding Recessed Side	Number of Doors	0
Item	Tool Chest	Includes	Padlock Installation Components Included, Hex Head Cap Screw
Lid Type	Hinged	Number of Drawers	0
Width	36"	Nominal Outside Width	36"
Material	Steel	Nominal Outside Depth	20"
Locking System	(1) Padlock Enclosure		

- 40 3/4 & 5/8 G2130 Shackles with double lock - nut & cotter pin
- 30 Sling rating = 3,600 lbs

10	1/4 X 10FT 6" 4 Legged Wire Rope Bridle c/w 5/8 Ring 1T Alloy Hook	H	75.00
3	1/4 X 6FT 4 Legged Wire Rope Bridle 5/8 Ring 1T Alloy Hook	H	70.00
2	1/4" x 10FT 2 Leg Wire Rope SLing c/w 5/8 Ring and 1T Alloy Hook	H	40.00
12	2 ply 2" wide x 20FT Reinforced Yellow Polyester	H	48.00
3	3/8"-1/2" Ratchet Loadbinder	H	35.00

