

# Turquetil – Esker Drilling Project Henik Lake Area, Nu

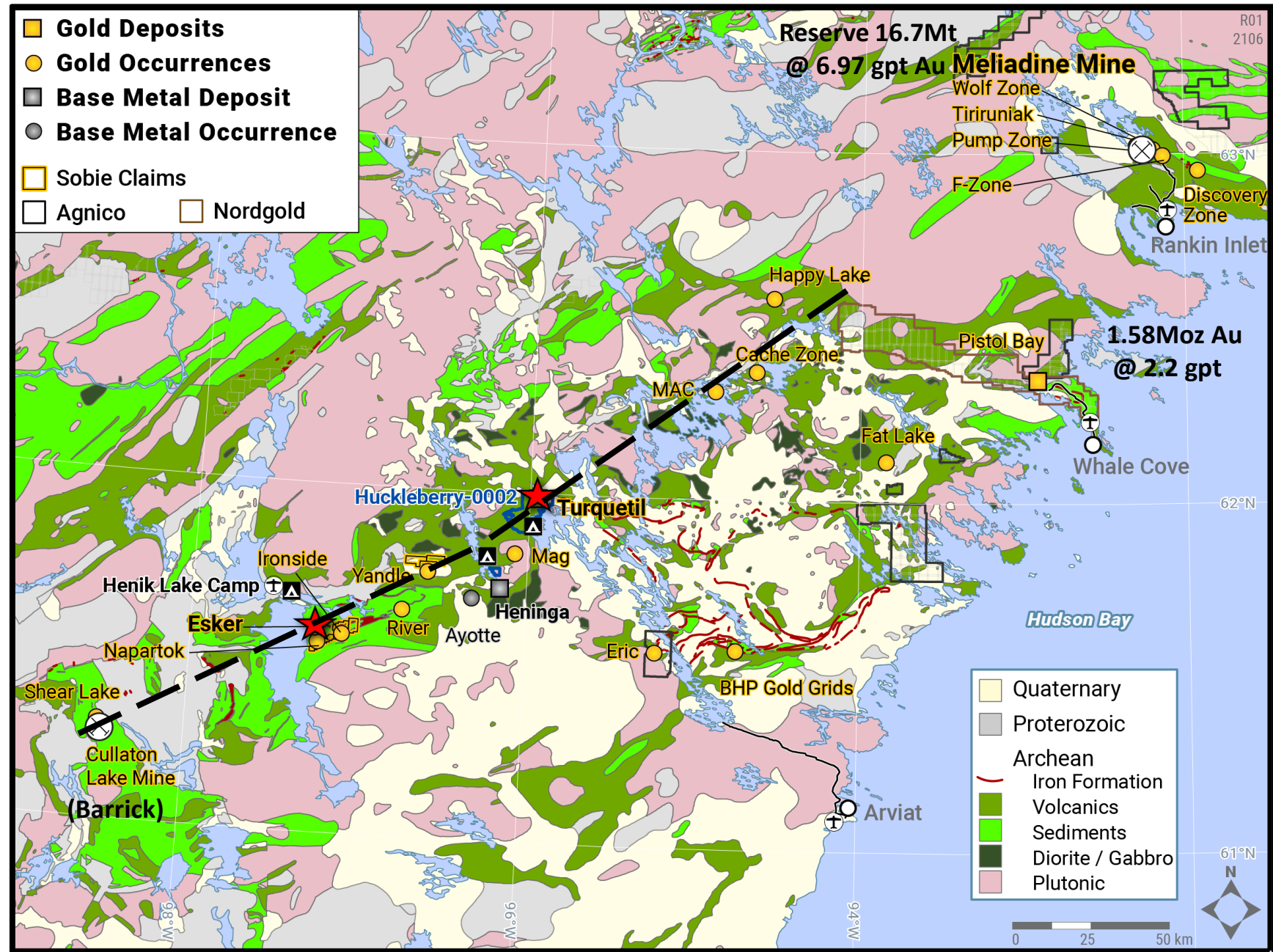
June 2021





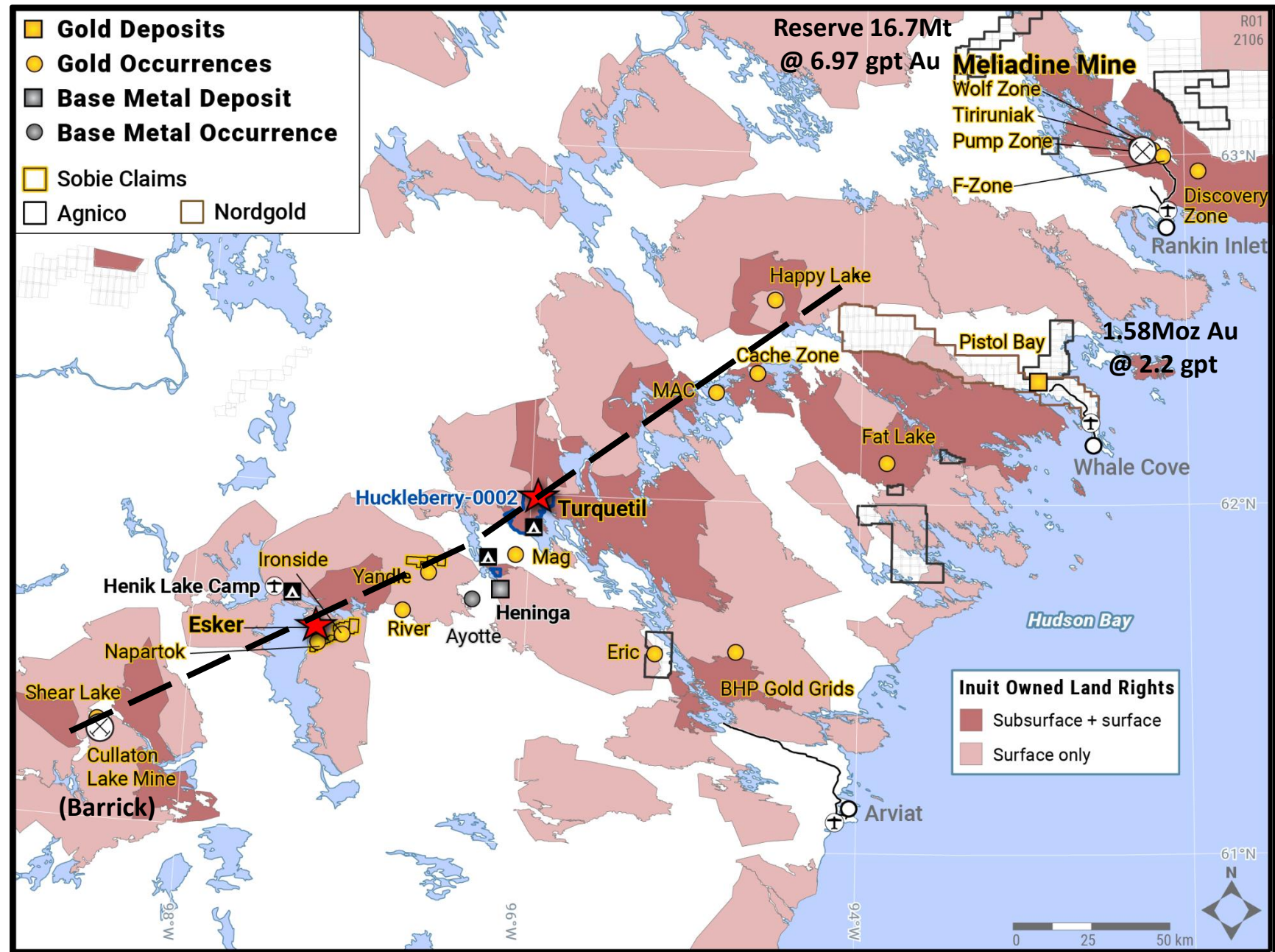
# Turquetil-Esker Drilling Project

- Properties cover important parts of the southern Rankin-Ennadai Belt where Agnico-Eagle and Nordgold are major players further north
- Numerous gold and one significant Cu-Zn prospects along the belt
- Turquetil has received the most work in the past and a small gold deposit has been delineated.
- Esker has received lesser, but still promising drilling for gold
- MPH project designed to figure out how large each may be during 2021-2022
- MPH has over 50 year history of operating in Nunavut, NWT and Yukon Territories
- Recent project near Arviat was IronOne on Wallace River in 2011
- Pistol Bay (Nordgold) originally identified and staked by MPH



# Turquetil-Esker Drilling Project

- Turquetil Gold Deposit on Huckleberry-0001 MEA has good potential, and is **140km** from Arviat airport
- Esker Gold Prospect has received less drilling but also looks like it might have good potential, and is **180km** from Arviat Airport
- Meliadine Mine is **25km** from Rankin Inlet
- Meadowbank Mine is **78km** from Baker Lake
- Pistol Bay Deposit is **15km** from Whale Cove
- Turquetil and Esker are much further from Arviat than are Kivalliq's other mines and advanced projects
- No conflict with the Maguse Lake recreational and hunting/trapping area.





# 2019 & 2020 Recce Trips - Synopsis

- Geological Recon and Independent QP Sampling at:
  - **Turquetil Gold Deposit (3.8Mt @ 2.4gpt Au inc. 0.55Mt @ 6.3 gpt Au)** (1 surface, 14 core due-diligence samples )
  - **Esker Prospect** (4 surface, 18 core due-diligence samples )
- Established suitability of Henik Lake Camp, expediting and charter contractors for 2021-2022
- Established effectiveness of Thompson, Mb as launching point / supply depot such that Nunavut communities can be avoided if necessary
- Operated effectively within Covid-19 restrictions and protocols



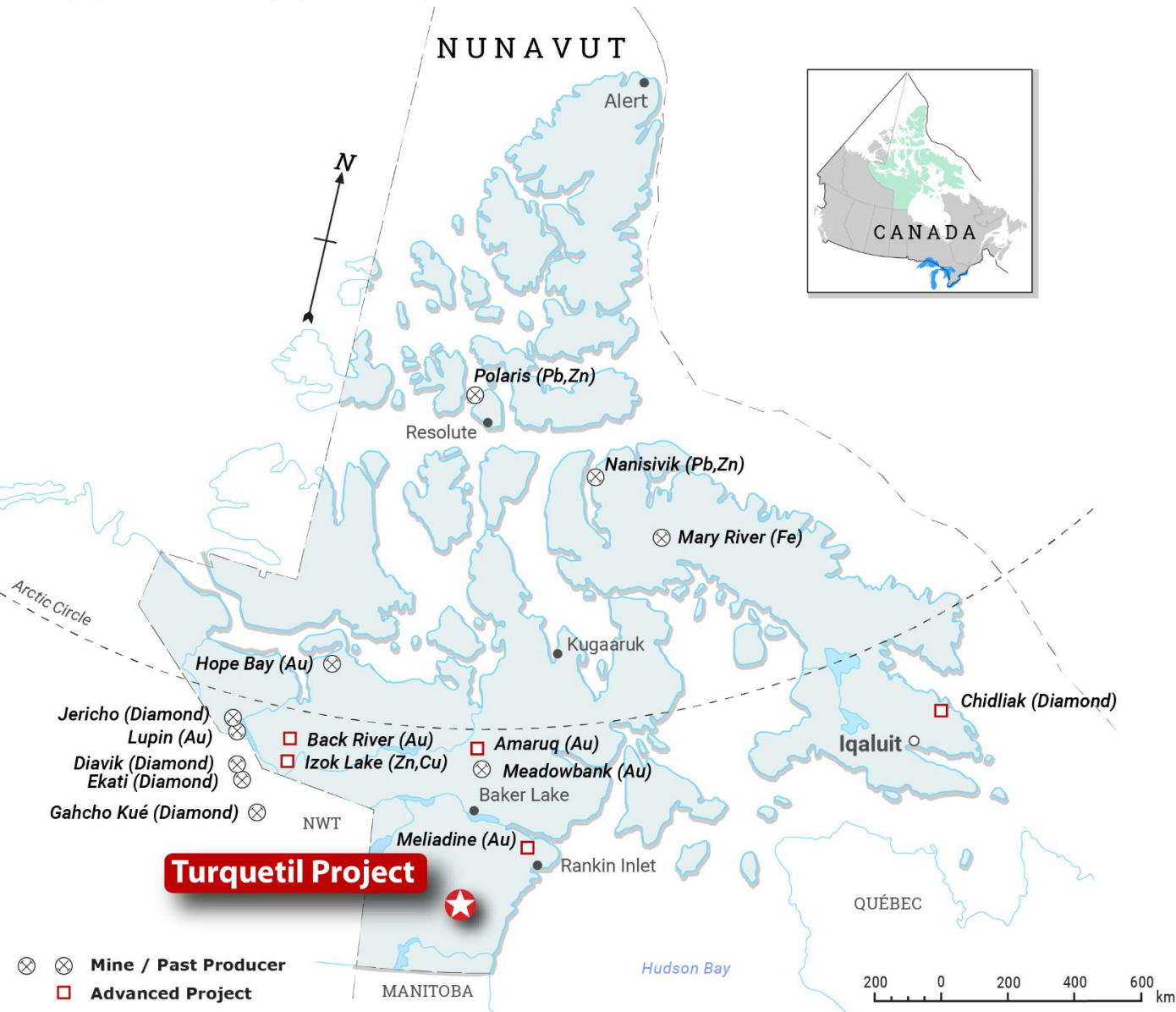
Channel Samples at Turquetil



Independent QP K. Kivi, P.Geo.



South Nunavut location means 2.5hr Charter from Thompson & ~45 Minutes from Arviat (major supplies shipped by sealift 3 times each summer)



Loading gear from for mob-in at Thompson Airport



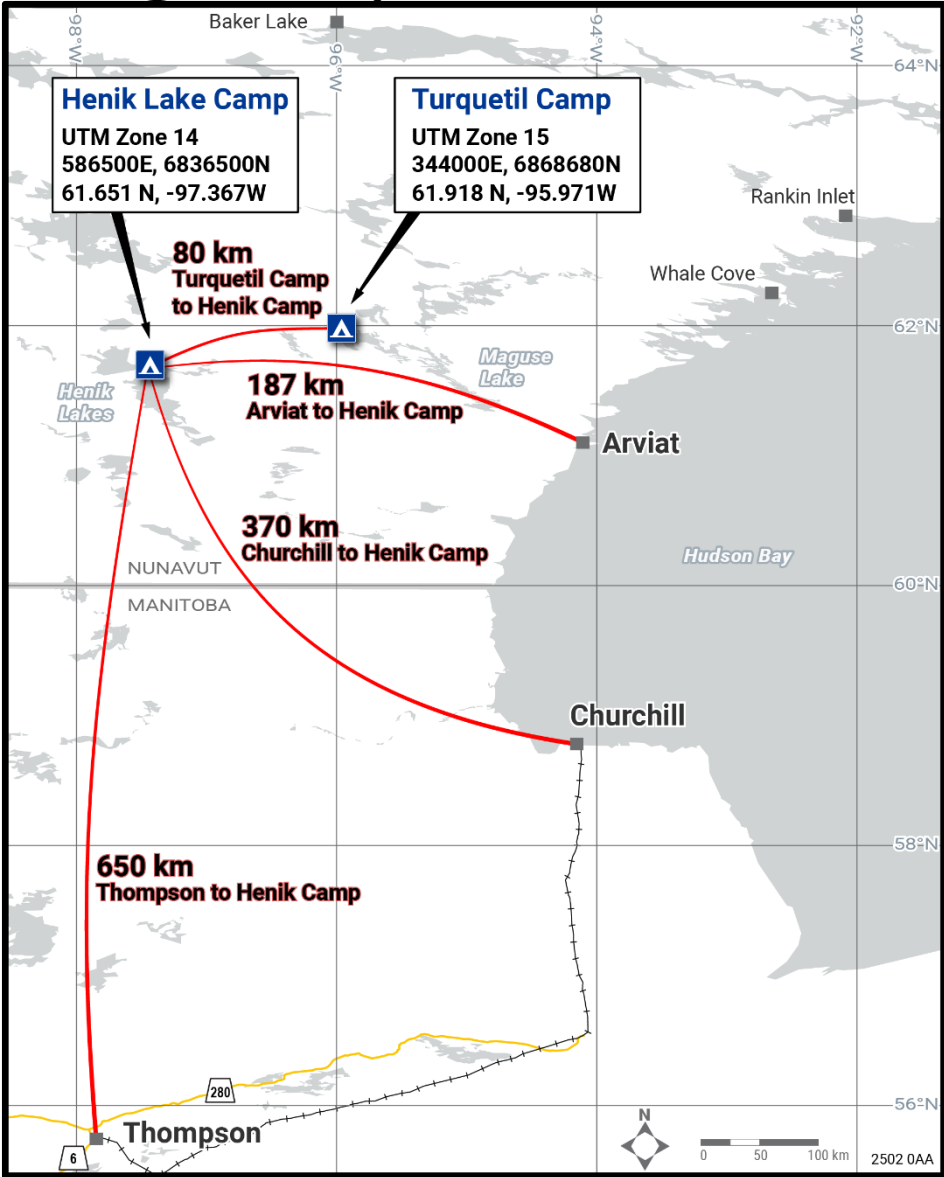
Loading samples and gear for demob from Henik Camp



# Henik Lake Camp to be winterized, upgraded to support 2021-2022 Exploration including drilling Turquetil & Esker



Genset Shack  
Core Shack  
Equip Shack/  
Camp Mgr  
Kitchen  
Office Tent  
4 Sleep Tents  
(2 more  
needed 2021)  
Storage  
SeaCan

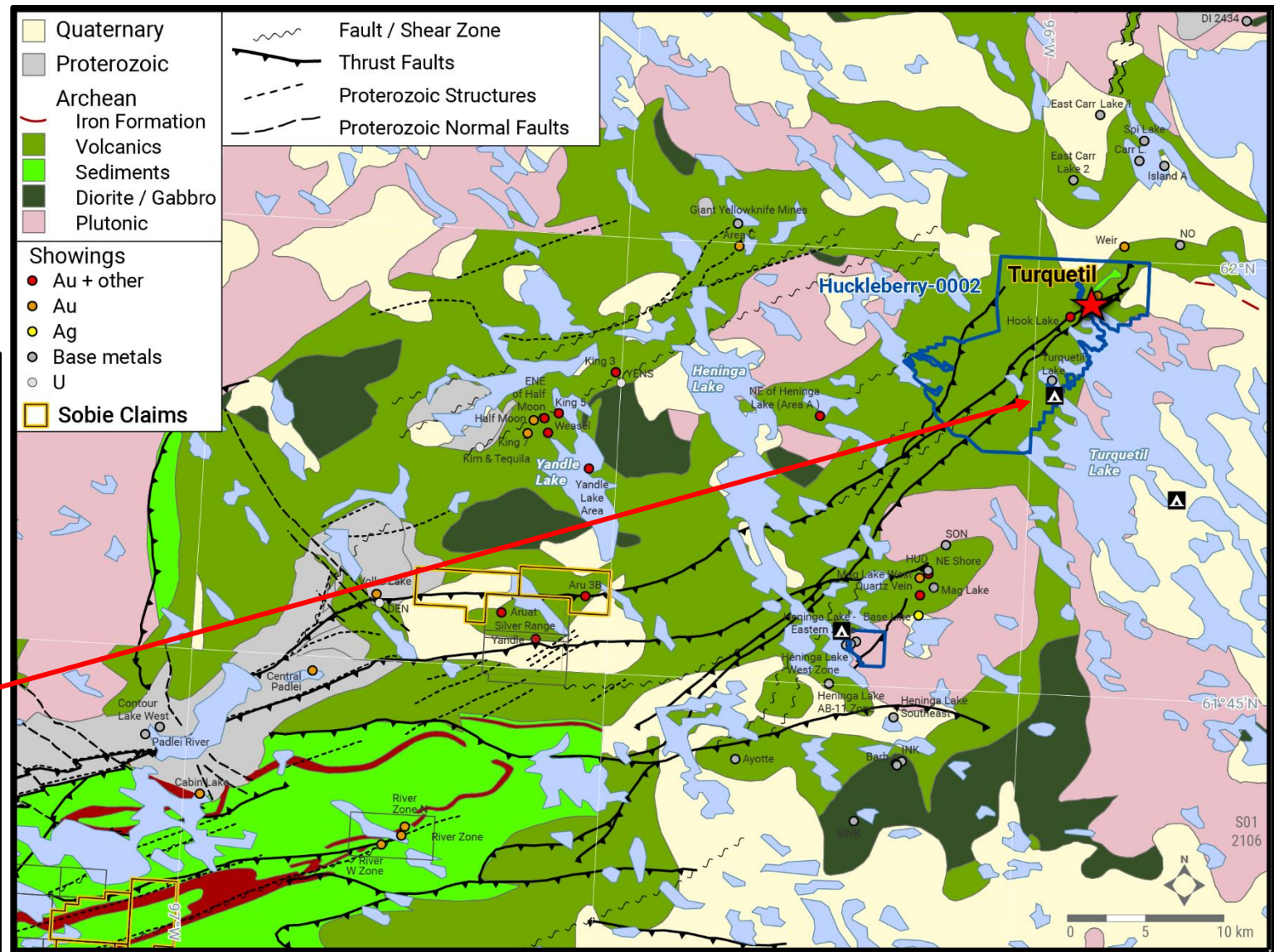




# Turquetil Lake Area

Volcanic package hosts both the Turquetil Gold and Heninga Lake VMS deposits

**Turquetil** “probable reserve” to depths of ~-200m of 3,800,000 tonnes averaging 2.4 g/t Au (not economic – needs to be bigger or higher grade)

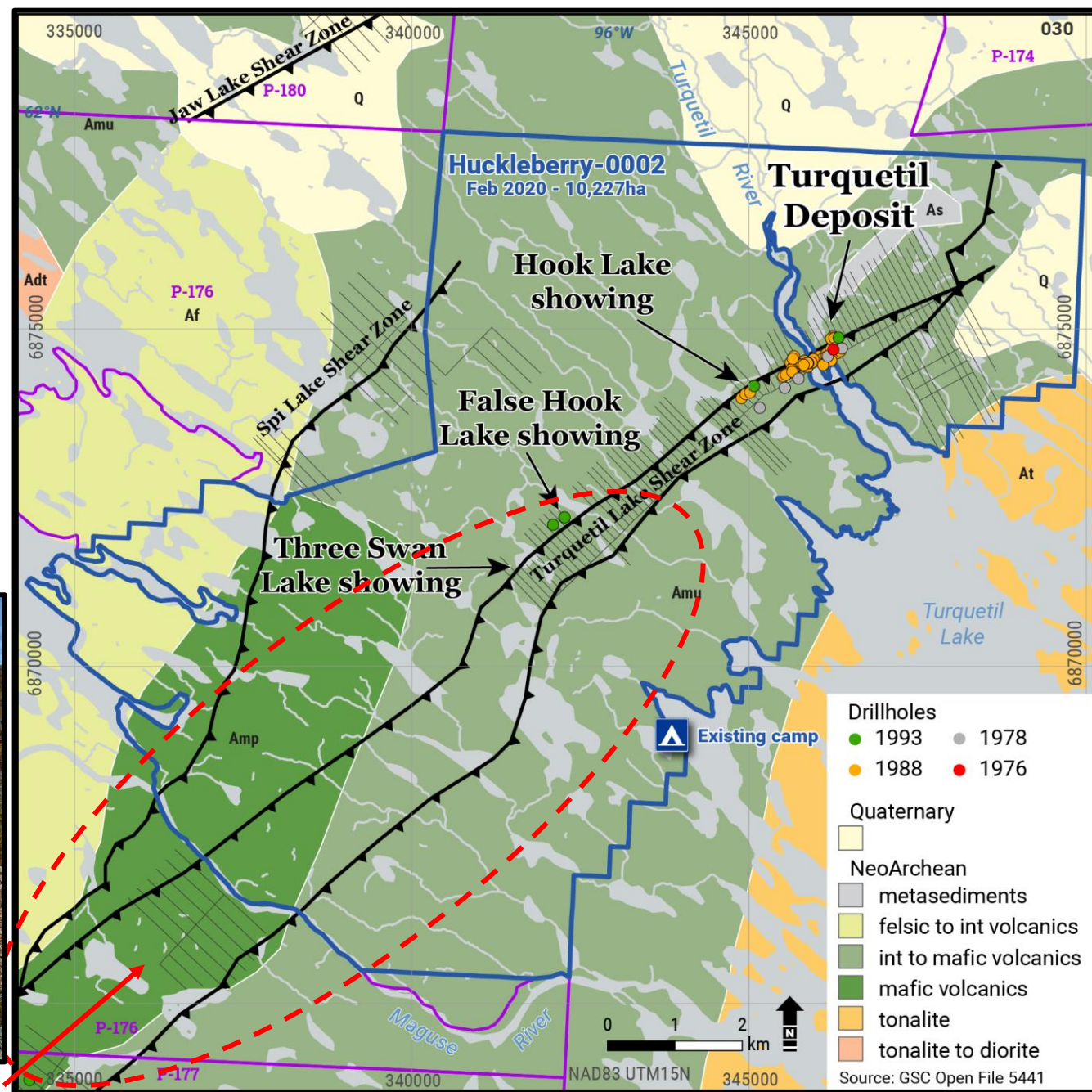




# Turquetil MEA – now 10,000 ha covering major gold zone and deposit – no camp to be established for 2021-22



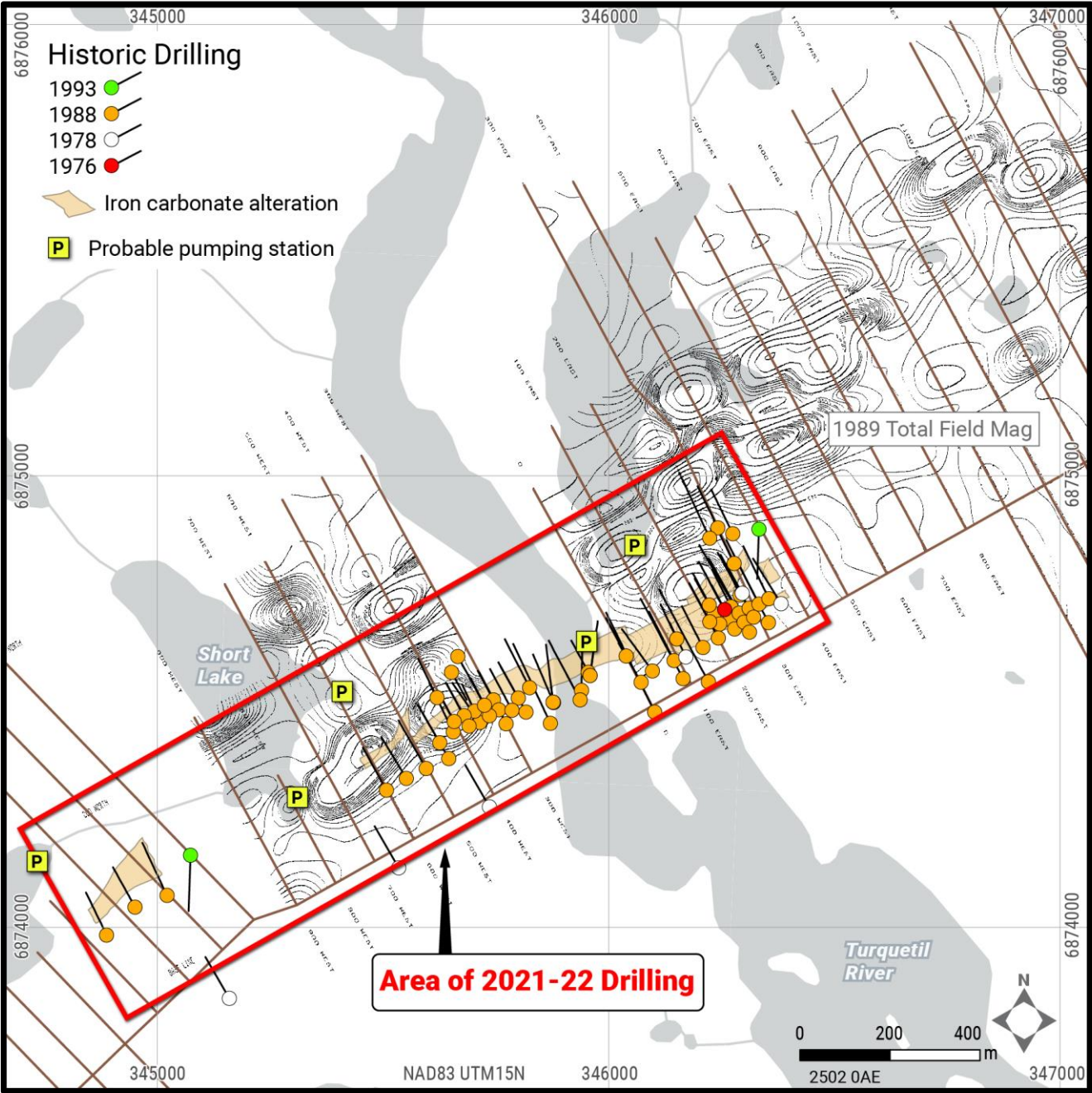
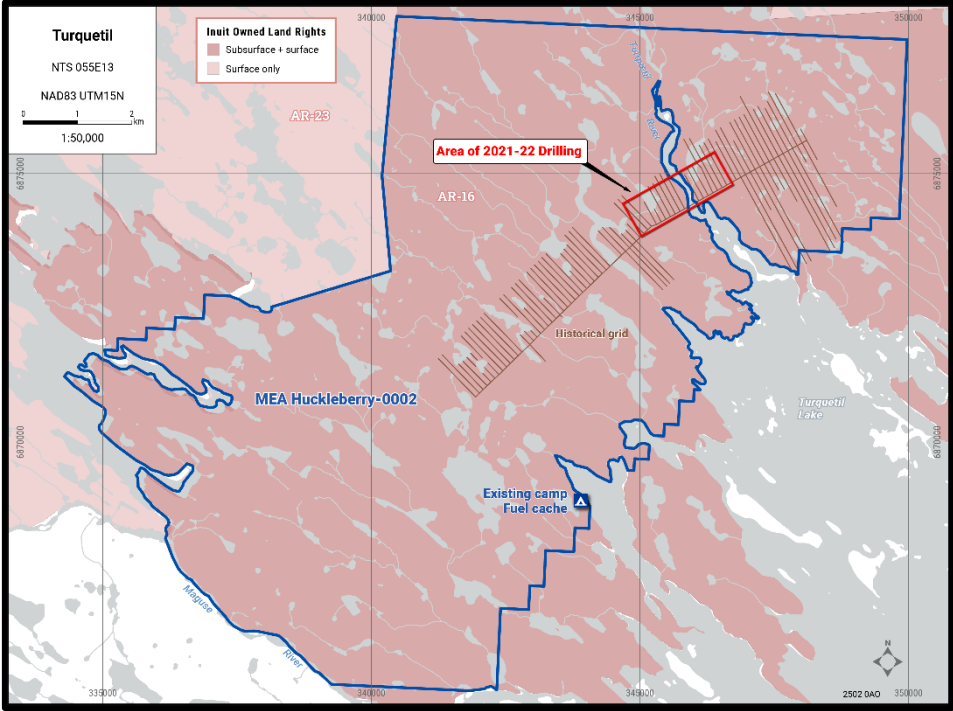
Turquetil SZ exposed in river  
(left) and in drilled area east of  
the river (below)





# Turquetil Gold Deposit

- Positive Due-Diligence Results
- Needs state-of-the art airborne geophysics – already approved (KIA Land-Use License No. KVL116B04)
- MPH drilling will be in small area of the overall MEA during 2021-22
- Geochem sampling elsewhere may lead to other operational areas being permitted for drilling





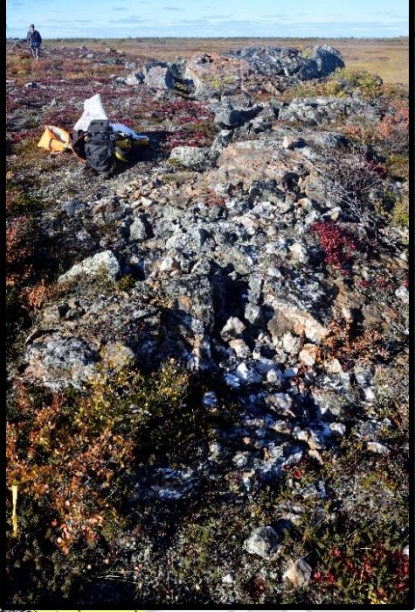
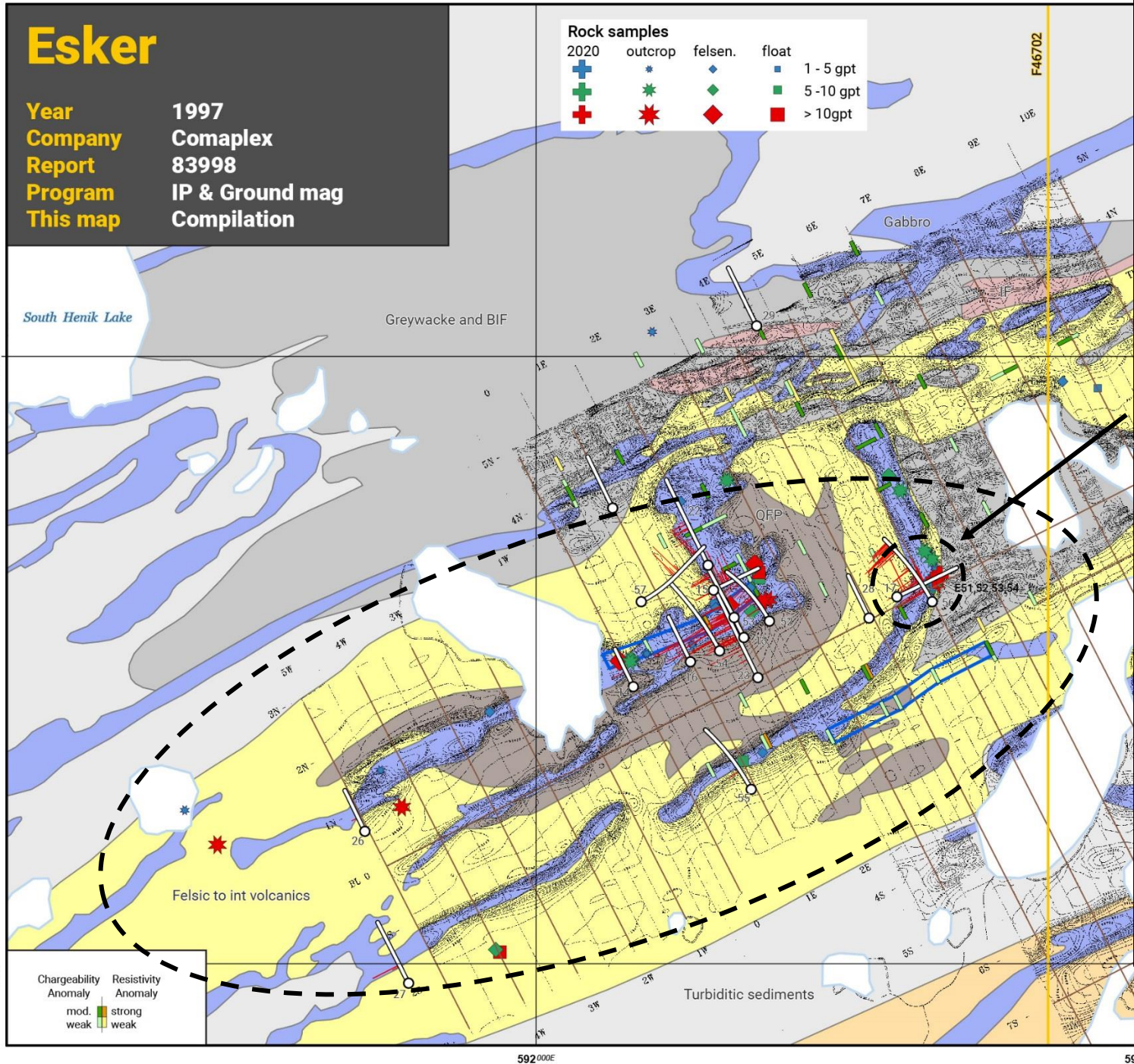
# Esker Prospect (Claim F46702)

Major parallel Fe-carb alteration / shear /stockwork vein zones along contacts of deformed, altered gabbros (alteration visually similar to Turquetil)

Surface grabs >3 gpt Au common along entire length of two adjacent zones (4 dd samples inc. 33.8gpt Au and 25.6 gpt Au)

18 ddh totalling 3,220m all located

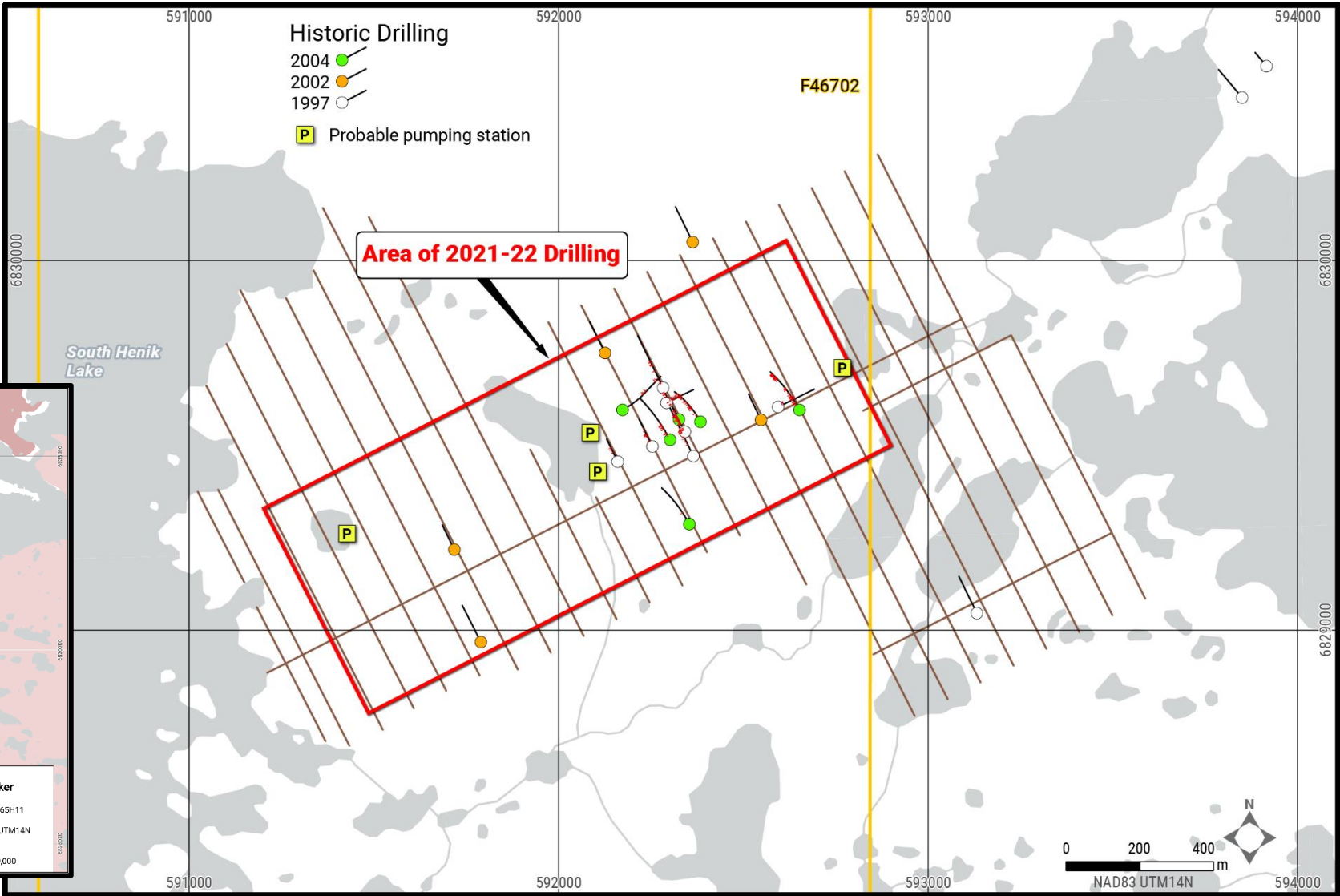
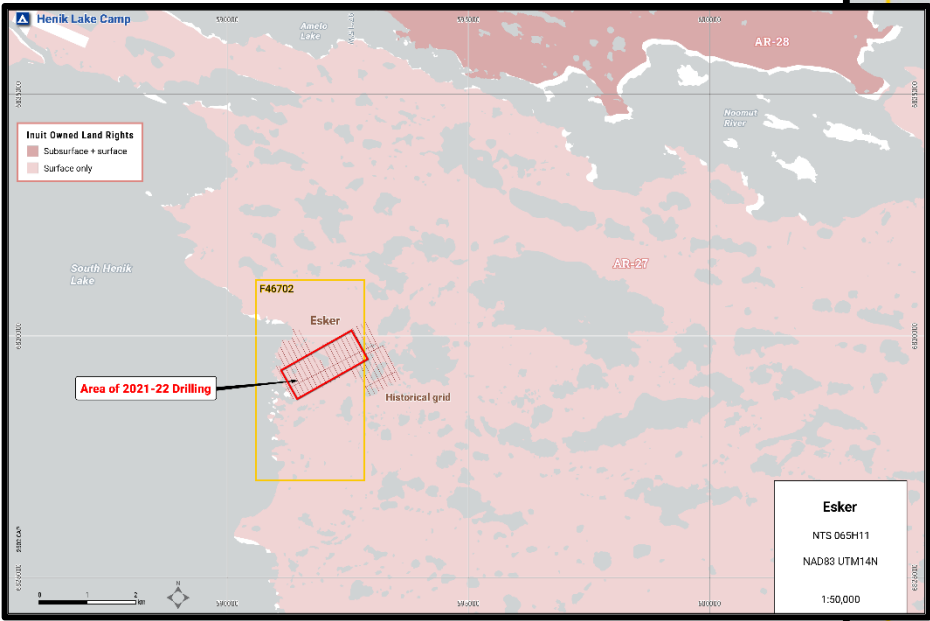
18 dd samples of mineralized zones collected from seven holes, good correlation in results, to 5.93 gpt Au)





# Esker Gold Prospect

- Earlier stage than Turquetil, much less drilling over smaller area
- Positive Due-Diligence Results
- Needs state-of-the art airborne geophysics and Geochem/prospecting – already approved (KVL116B04)
- MPH drilling will be in small area of the overall claim F46702 during 2021-22



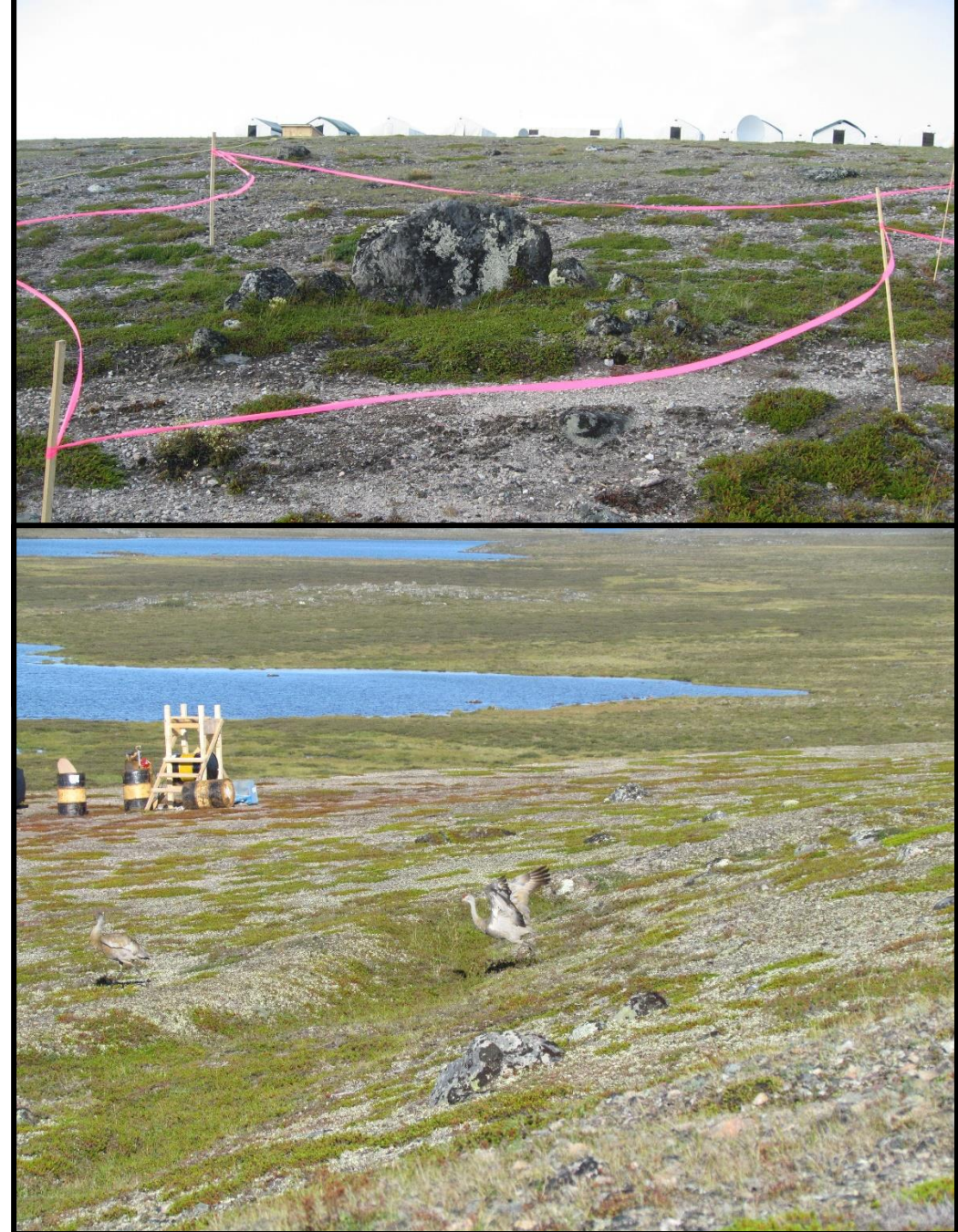


# CORPORATE POLICY - COMMUNITY

Committed to building long-term relationships with northern communities; value the knowledge of the local people

GOAL: to provide mutually shared benefits between the community and company by:

- Building successful working relationships based on trust and mutual respect for local traditions and cultural values
- Striving to maintain open and effective lines of communication with communities and residents
- Understanding and accommodating local and regional issues such as;
  - wildlife habitats
  - traditional / cultural land use (NPC)
  - harvesting activities
  - economic opportunities/employment
  - Training and mentoring youth interested in prospecting/geology/mining





# CORPORATE POLICY - ENVIRONMENT

MPH has extensive Arctic experience and realizes that the northern environment is a delicate, complex and integrated ecosystem with many components.

Environmental impact is minimized by:

- Using current regulatory policies as a MINIMUM standard (AANDC, NWB, KIA, NIRB, WCB, NPC, CLEY)
- Striving to exceed government requirements
- Seeking and following advice from community, wildlife, environmental, government and heritage resource experts
- Comparing alternative processes to achieve preferred approach to minimize effects on environment, wildlife, traditional land use.





# STAGES OF EXPLORATION

- Research of data (geochemical, geophysical) in areas of good geology and known gold showings; staking
- Land Use Permit, Water License, community meetings
- ---Turquetil – Esker Drilling Project is here---
- Mobilization of equipment/fuel and camp supplies and building material
- Geophysics and Geochem sampling
- Drilling with new data as well as old results to guide new holes





# Heli-Supported Drilling (very small footprint)





# Core Logging & Sampling

Will all be done at Henik Lake  
Camp





# Benefits to Community

- Example: 2011 IronOne program
- ~\$6 million spent ; \$2.4 million (40%) spent locally between expediting and supplies (Eskimo Point, Co-Op & Northern stores, motels and inns, Ookpik Aviation etc.)
- 6-10 Inuit employees
- Jobs: camp and construction workers, wildlife monitors, cooks, field technicians, expeditors and stakers
- Wildlife reporting
- MPH expects Turquetil-Esker to be a multi-year project





# Mitigation Commitments

Measures to reduce, control or eliminate environmental and cultural impact include:

- Flight height restrictions
- Caribou protection measures
- Wildlife Monitoring/Reporting
- Progressive Reclamation
- Fuel Containment
- Emergency response plans
- Avoid Archaeological/cultural sites
- Inspections by KIA and Water Resources officials





# Community Benefits

- Good jobs
- Support local businesses
- Work/training experience for youth

# Company Benefits

- Good local workers
- Local business support
- Local knowledge and guidance





# 2021-2022 Exploration Schedule (Covid-willing)

## ***Phase 1 (July-Oct 2021)***

- Fly in one drill rig, all camp upgrade material to Henik Lake Camp
- Up-grade camp, move drilling equipment to Turquetil for ~4-5 weeks of operations
- Move drilling equipment to Esker for ~4-5 weeks of operations
- **Phase 1 budget ~\$2-3million**

## ***Phase 2 (March-May 2022)***

- Haul in 2<sup>nd</sup> drill rig to Turquetil
- Haul in fuel etc to Turquetil fuel cache and Henik Camp
- 6 week drill program at Esker
- 6 week drill program at Turquetil
- **Phase 2 budget ~\$2-3million**

## ***Phase 3 (July-Oct 2022)***

- 6-8 week drill program at Esker
- 6-8 week drill program at Turquetil
- **Phase 2 budget ~\$2-3million**

