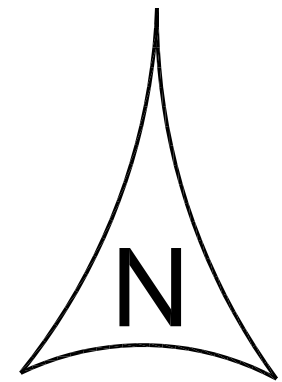

[illegible]



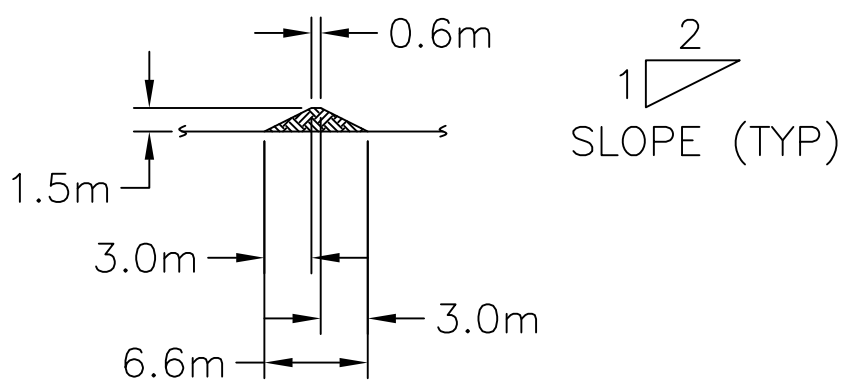
Cambridge Bay

**PRELIMINARY
FOR INFORMATION ONLY**

	COORDINATES FOR PROPOSED POWER PLANT SITE		
	CORNER	EASTING (X)	NORTHING (Y)
	➊ 1 (NORTH)	495931.04m	7666390.89 m
	➋ 2 (EAST)	496079.18 m	7666288.50 m
	➌ 3 (SOUTH)	496033.68 m	7666222.80 m
	➍ 4 (WEST)	495885.54 m	7666325.03 m

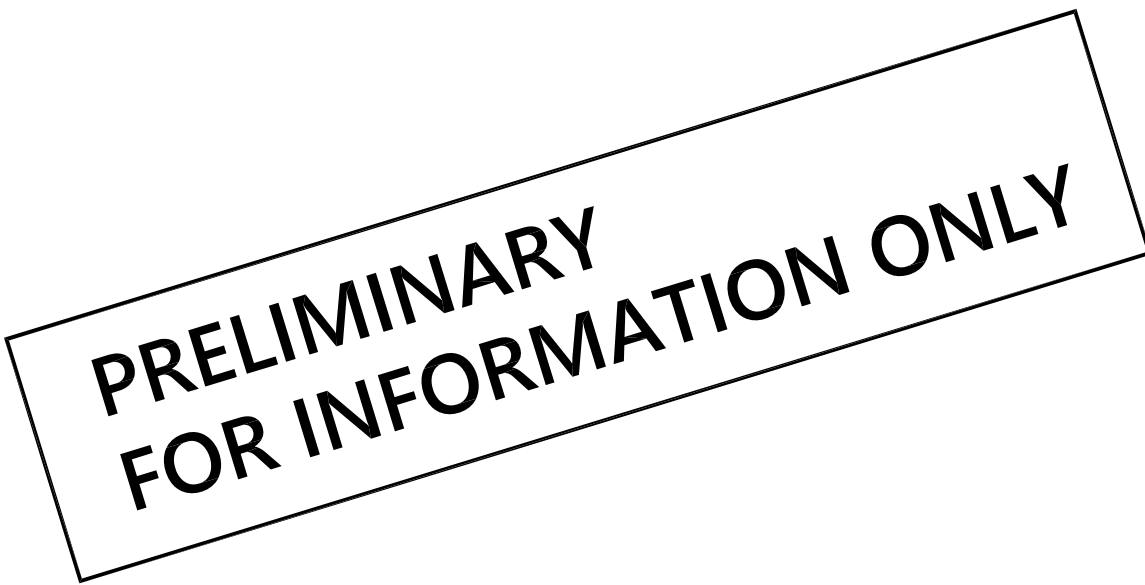
NOTES: (CONTINUED ON SHEET 3)

- 1 COORDINATES ARE TAKEN FROM EXISTING AUTOCAD BASE MAP
FINAL COORDINATES TO BE VERIFIED FROM AN ONSITE SURVEY.
- 2 BERM VOLUME WAS CALCULATED AT 2.76 M LITERS.



BERM WALL DETAIL

[illegible]

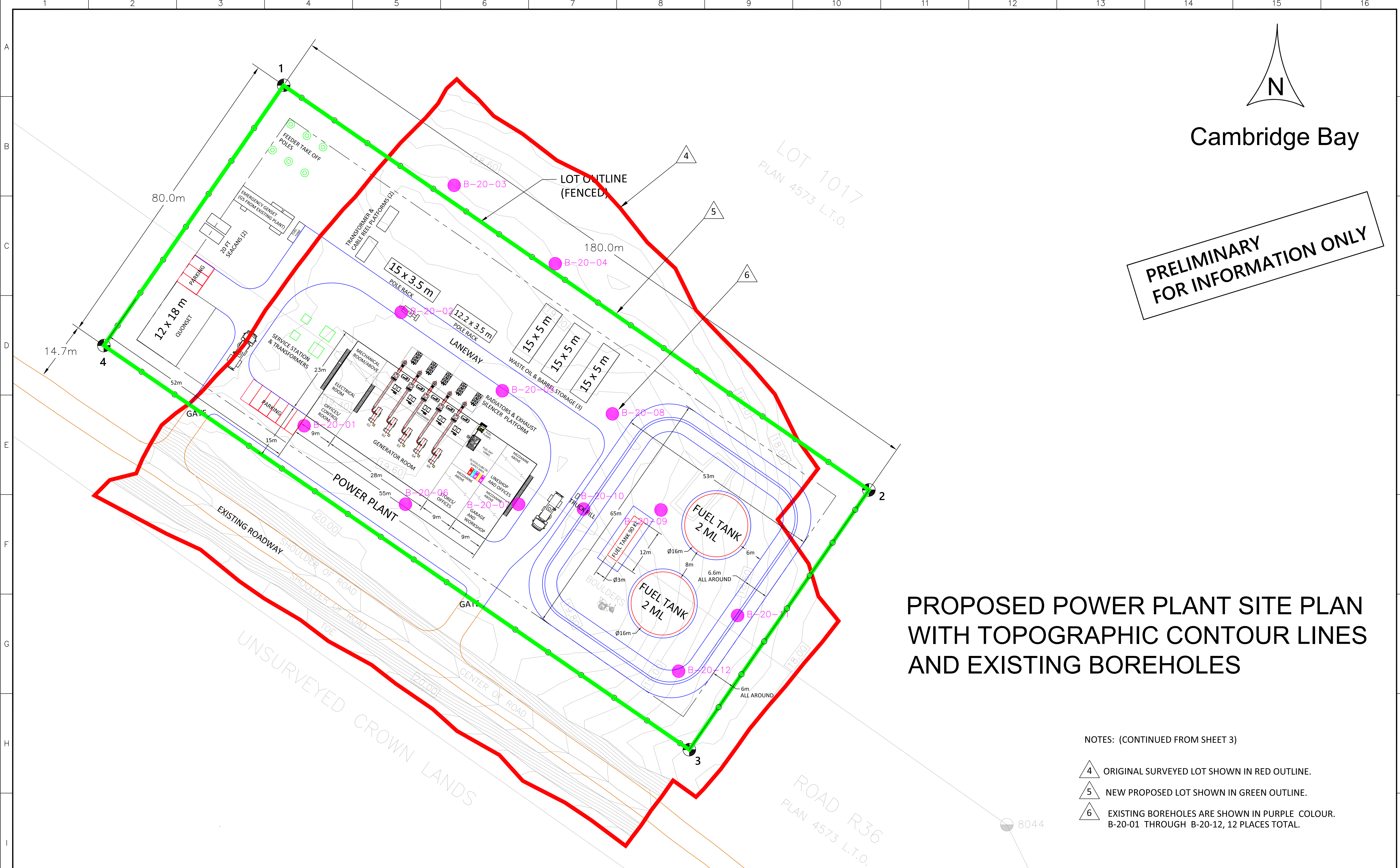


3 PROPOSED POWER PLANT SITE PLAN WITH TOPOGRAPHIC CONTOUR LINES

NOTES: (CONTINUED ON SHEET 4)

3 CONTOUR LINES AND ROAD R36 OUTLINE ARE TAKEN FROM CONSULTANT (ENGLOBE CORP.)
DRAWING NO: 80590-TOPO-OC26-REV 1.
DETAILED CONTOUR LINE INFORMATION IS NOT AVAILABLE FROM THIS AUTOCAD BASE MAP.

[illegible]



PROPOSED POWER PLANT SITE PLAN WITH TOPOGRAPHIC CONTOUR LINES AND EXISTING BOREHOLES

NOTES: (CONTINUED FROM SHEET 3)

- 4 ORIGINAL SURVEYED LOT SHOWN IN RED OUTLINE.
- 5 NEW PROPOSED LOT SHOWN IN GREEN OUTLINE.
- 6 EXISTING BOREHOLES ARE SHOWN IN PURPLE COLOUR.
B-20-01 THROUGH B-20-12, 12 PLACES TOTAL.

[illegible]