



AGNICO EAGLE

PARKER, PETER AND FOX LAKES EXPLORATION PROJECTS

2020 annual report

Screening decision

15EN049

Prepared by:

Agnico Eagle Mines Limited, Exploration Division

March 2021

Submitted to:

Nunavut Impact Review Board

Contact:

Agnico Eagle Mines Ltd.

David Frenette

Environmental Coordinator

765 Chemin de la mine Goldex

Val-d'Or, Quebec, J9P7G4

david.frenette@agnicoeagle.com

Annual Report

2) The Proponent shall submit a comprehensive annual report with copies provided to the Nunavut Impact Review Board and Government of Nunavut – Department of Environment, by March 31st of each year of permitted activities beginning March 31, 2017. The annual report must contain at least the following information:

a) A summary of activities undertaken for the year, including:

- i) a map showing the approximate location of drill sites;
 - *No exploration activities were conducted in the area covered by this decision.*

ii) a map showing the location of the fuel caches;

- *Fuel drums stored in HDPE secondary containments installed in seacans were stored at the Parker Lake Exploration camp (location on Figure 1) site along with an 18000-litre double wall fuel tank.*

iii) a description of local hires, contracting opportunities and initiatives;

- *Due to the COVID-19 pandemic, in March 2020, Agnico Eagle took measures to isolate our Nunavut operations from local communities with the aim of minimizing any risk of the virus spreading to these communities. Agnico Eagle also sent our entire Nunavut-based workforce (employees and contractors) home from our Meliadine and Meadowbank operations as well as the exploration projects. Agnico Eagle Nunavummiut employees still at home have been receiving 75% of their base pay.*

Other measures taken included:

- *Isolation of the mine sites from the communities*
- *All employees are on site on a voluntary basis*
- *We have implemented 3 COVID testing facilities – Val-d'Or, Meliadine mine and Meadowbank Complex*
- *Increased screening measures for all employees before flying to site*
- *All employees and contractors are tested for COVID-19 prior to boarding the planes and placed in isolation on site until their test results are received.*
- *In addition, both sites are implementing re-testing of employees 5 days into their rotation to detect anyone who may have been recently exposed, and in case the disease was in incubation at time of arrival*

iv) flight altitudes, frequency of flights and anticipated flight routes;

- *No exploration activities were conducted in the area covered by this decision.*

v) site photos;

- *No new picture.*

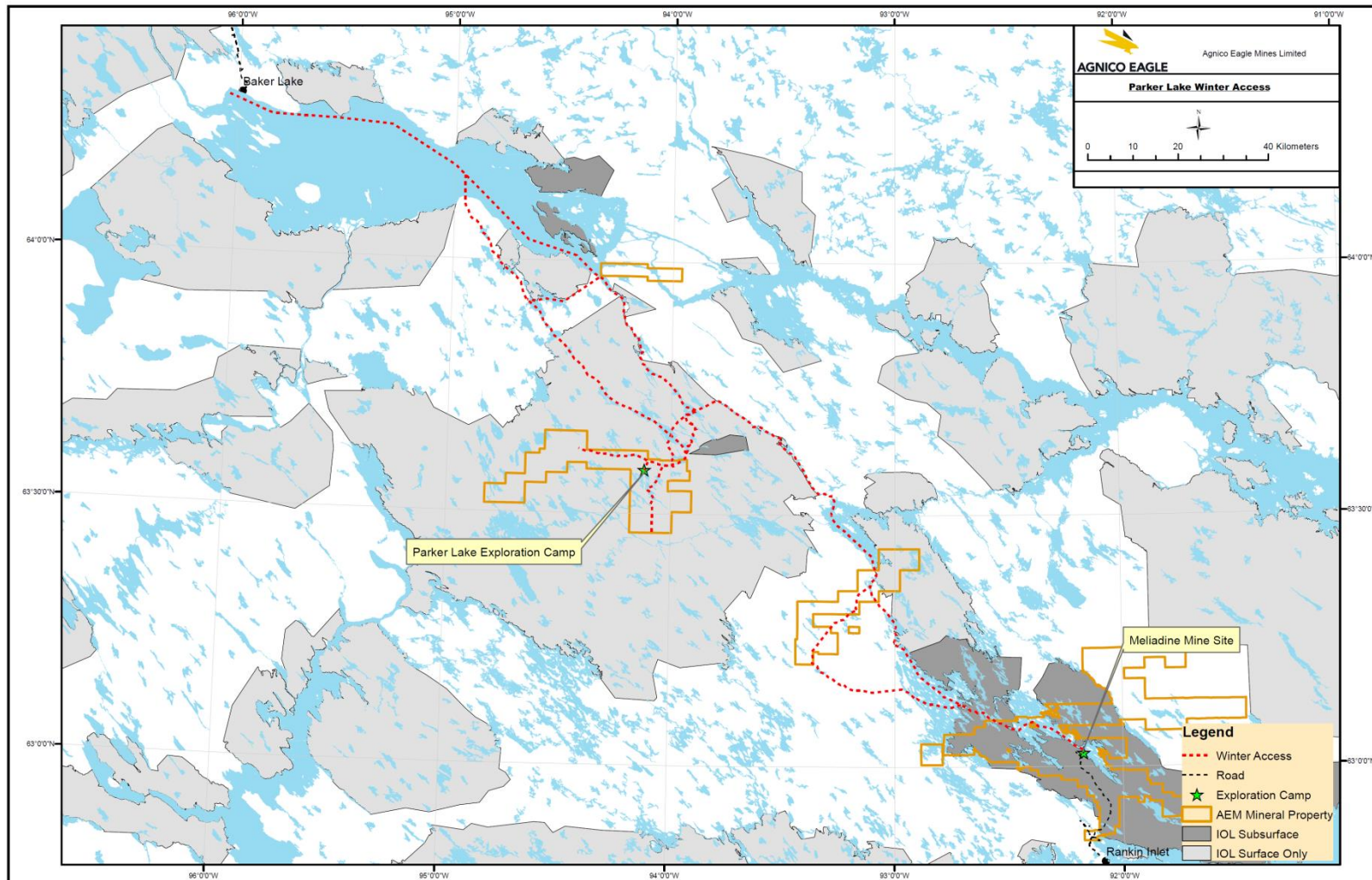
b) A summary of the overview assessment conducted of the exploration areas;

- *Archaeologists conducted field visits in summer 2016 and 2017 to ensure archaeological site protection during exploration activities. Reports were submitted to the Government of Nunavut by the archaeologists.*

c) A work plan for the following year, including any progressive reclamation work undertaken;

- *No exploration activities are planned in 2021 in the area covered by this decision, but winter hauling to backhaul material and equipment to Baker Lake and or to Meliadine mine site using the winter access is. Approximately 15 trips are planned to be done by tracked tractors (Challenger) on the winter access shown on Figure 1.*

Figure 1, Winter Access and camp site locations



d) A summary of community consultations undertaken throughout the year, providing copy of materials presented to community members, a description of issues and concerns raised, discussions with community members and advice offered to the company as well as any follow-up actions that were required or taken to resolve any concerns expressed about the project proposal;

- *With the COVID-19 pandemic, exploration activities were all conducted in the vicinity and based from the mine sites to avoid any visit in the communities so as to reduce the risks associated to COVID-19 transmission. No exploration activities were conducted in the area covered by this decision.*

Discussions oriented toward exploration projects in 2020 included:

- *May 27th, 2020, Teleconference with Baker Lake Mayor to review and discuss the exploration activities for the season.*
- *June 24th, 2020, Teleconference with Whale Cove Mayor to review and discuss exploration activities.*

e) A log of instances in which community residents occupy or transit through the project area for the purpose of traditional land use or harvesting. This log should include the location and number of people encountered, activity being undertaken (e.g. berry picking, fishing, hunting, camping, etc.), date and time; and any mitigation measures or adaptive management undertaken to prevent disturbance;

- *No exploration activities were conducted in the area covered by this decision.*

f) A discussion of issues related to wildlife and environmental monitoring, including the number of cease-work orders required as a result of proximity to caribou;

- *No exploration activities were conducted in the area covered by this decision.*

g) A brief summary of Wildlife Monitoring and Mitigation Plan (WMMP) results as well as any mitigation actions that were undertaken. In addition, the Proponent shall maintain a record of wildlife observations while operating within the project area and include it as part of the summary report. The summary report based on wildlife observations should include the following:

1. Locations (i.e., latitude and longitude), species, number of animals, a description of the animal activity, and a description of the gender and age of animals if possible.
 - *No exploration activities were conducted in the area covered by this decision.*
 2. Prior to conducting project activities, the Proponent should map the location of any sensitive wildlife sites such as denning sites, calving areas, caribou crossing sites, and raptor nests in the project area, and identify the timing of critical life history events (i.e., calving, mating, denning and nesting).
 - *No exploration activities were conducted in the area covered by this decision, but the following is the standard procedure: A visual inspection of the working sites and surrounding areas is conducted before exploration activities start to ensure that no sensitive sites are present in the vicinity of exploration activities. Respect of caribou protection areas and procedures are applied.*
 3. Additionally, the Proponent should indicate potential impacts from the project, and ensure that operational activities are managed and modified to avoid impacts on wildlife and sensitive sites.
 - *Spill Contingency Plan, Wildlife Protection and Response Plan, archaeological field investigations, pre-drilling field inspection and other good practices are in place to reduce potential impacts of the exploration activities. This includes, among others, to respect protection buffers around sensitive features, to have working practices to reduce the risk of spills, to have procedures in place in case of a spill, to have procedures during caribou migration, etc.*
- h) An analysis of the effectiveness of mitigation measures for wildlife as proposed in the WMMP;
- *No exploration activities were conducted in the area covered by this decision.*
- i) Summary of any heritage sites encountered during the exploration activities, any follow-up action or reporting required as a result and how project activities were modified to mitigate impacts on the heritage sites;
- *The archaeologists found archaeological sites during the field investigations in 2016 and in 2017. These sites are described in the reports submitted to the Government of Nunavut by the archaeologists, and protection buffers are respected during exploration activities.*

j) Summary of its knowledge of Inuit land use in/near the project area and explain how project activities were modified to mitigate impacts on Inuit land use; and

- *Protection buffers are respected around the archaeological and other known sites to ensure to mitigate the impact on the Inuit Land Use. Frequent meetings with the various stakeholders help to mitigate the impacts on Inuit Land Use.*

k) A summary of how the Proponent has complied with conditions contained within this Screening Decision, and all conditions as required by other authorizations associated with the project proposal.

- *Procedures and plans were created to ensure compliance with the conditions associated to this decision and other licenses and permits. The Spill Contingency Plan and the Wildlife Protection and Response Plan describe mitigation measures applied in certain defined situations to ensure prompt actions. Annual reports including details on Agnico Eagle's compliance with obligations are submitted to regulators, including Nunavut Water Board, Crown-Indigenous Relations and Northern Affairs Canada and Kivalliq Inuit Association. Compliance inspections by the Kivalliq Inuit Association and by CIRNAC are also regularly conducted in the areas where exploration activities are conducted.*