

**ወይግዢ ልዩብላጽ፡፡**

[illegible]

◁<sup>a</sup>⊂<sup>a</sup>⊆<sup>c</sup> ከልኝ<sup>b</sup>ከኛ<sup>c</sup>ፊ<sup>c</sup> ▷ኝኖ<sup>a</sup>ፍ◁<sup>b</sup>∩ ፊ◁▷ከኖ<sup>a</sup>

**ᐃᓕᑦᑐᒃ ᑎᑎᔭᑖᑆᑏᑦ ᓇᙰᑎ 08MN053**

[illegible]

**ኖቬምበር 10, 2021**

Δ-9-THC

L<sup>b</sup>Λ<sup>ᶜᵇ</sup>⊃L<sup>ᶜᵇ</sup> ၎်ႉ

[illegible]

**በበጎ ሥራ ላይ ለሚገኙ ሰራተኞች ልዩ ጥያቄ:**

በጥቅምት ፳፻፲፱ ዓ.ም. ለ - "ፕላንና ስራ ሰሌዳ ለፖለቲካ ፈጠራዊ ምርጫ" (ከፍተኛ ልማትና ፍትሕ ሚኒስቴር፣ ሰነድ ፩፣ ፳፻፲፱ ዓ.ም.)

[illegible]



በበጌጋ ልረቀቅባለን ር - 2014 ከረቀቅ ልረቀቅ ልረቀቅ ልረቀቅ 60-ገር ርቀቅ ልረቀቅ ልረቀቅ ልረቀቅ ልረቀቅ

- [illegible]











- L<sup>b</sup>Λ<sup>qb</sup>⊃L<sup>qb</sup> | 10





- [illegible]





- [illegible]



ᐃᑲᑎᑕᑎᑦᑦᑦᑦ ᐃᑲᑎᑦᑦᑦᑦ ᐃᑲᑎᑦᑦᑦᑦ ᐃᑲᑎᑦᑦᑦᑦ ᐃᑲᑎᑦᑦᑦᑦ (ECCC) ᐃᑲᑎᑦᑦᑦᑦᐃᑎᑦᑦᑦᑦ ᐃᑲᑎᑦᑦᑦᑦ ᐃᑲᑎᑦᑦᑦᑦ ᐃᑲᑎᑦᑦᑦᑦ  
ᐃᑲᑎᑦᑦᑦᑦ ᐃᑲᑎᑦᑦᑦᑦ ᐃᑲᑎᑦᑦᑦᑦ ᐃᑲᑎᑦᑦᑦᑦ ᐃᑲᑎᑦᑦᑦᑦ ᐃᑲᑎᑦᑦᑦᑦ ᐃᑲᑎᑦᑦᑦᑦ ᐃᑲᑎᑦᑦᑦᑦ (EEZ)  
ᐃᑲᑎᑦᑦᑦᑦ ᐃᑲᑎᑦᑦᑦᑦ ᐃᑲᑎᑦᑦᑦᑦ ᐃᑲᑎᑦᑦᑦᑦ ᐃᑲᑎᑦᑦᑦᑦ ᐃᑲᑎᑦᑦᑦᑦ ᐃᑲᑎᑦᑦᑦᑦ ᐃᑲᑎᑦᑦᑦᑦ ᐃᑲᑎᑦᑦᑦᑦ ᐃᑲᑎᑦᑦᑦᑦ

- [illegible]

[illegible]

(a)  $\nabla^2 \rho \nabla \rho \cdot \nabla \Delta^{\frac{1}{2}} C \nabla^{\frac{1}{2}} C \nabla^{\frac{1}{2}} L \nabla \Delta^{\frac{1}{2}} \rho$

(i) ሲተገባ ምርጫ ምክር ቤቱ ለሚከተሉት ምክሮች ምርጫ ይኖራቸዋል፡

[illegible][illegible][illegible][illegible]







[illegible]

[illegible]















[illegible]







- [illegible]



- L<sup>b</sup>Λ<sup>q<sub>b</sub></sup>⊃L<sup>q<sub>b</sub></sup> | 37



[illegible]





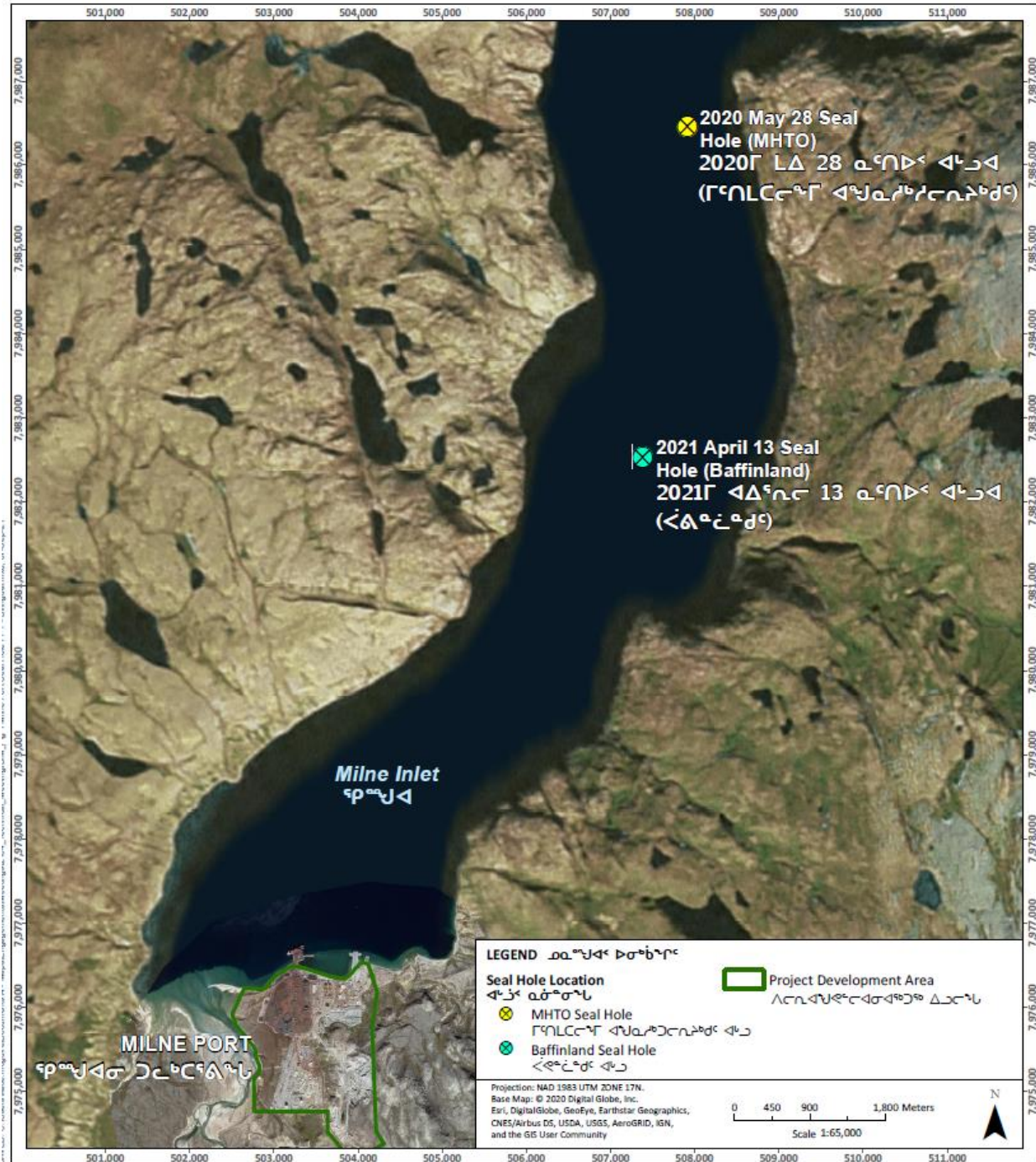






- [illegible]

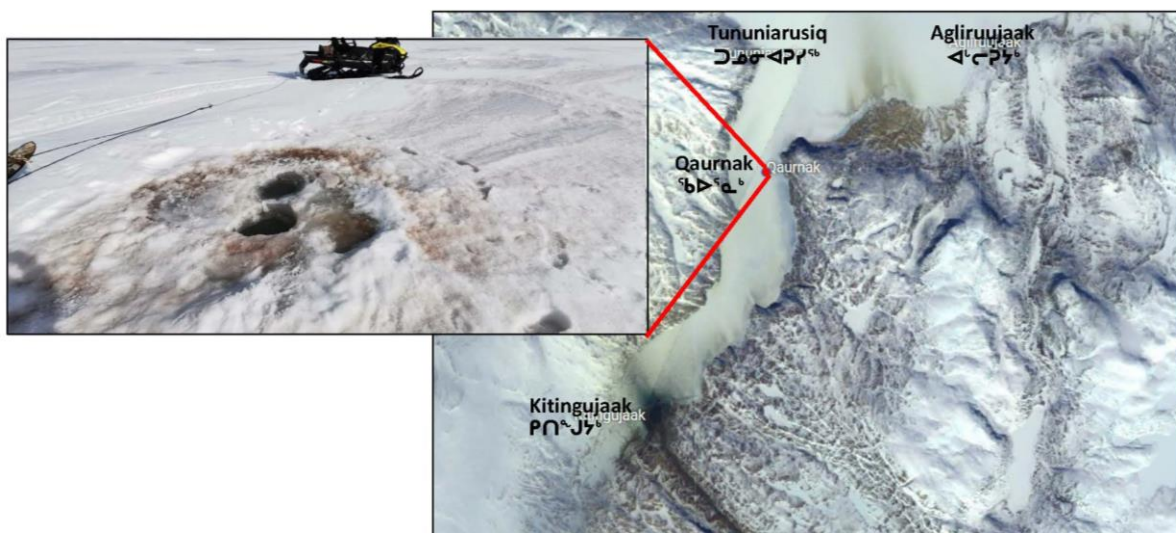
70.  $\Delta_{\mathbb{C}} \Gamma_N \triangleright \Gamma^{\mathbb{C}_N}$  በበኛኛ  $\Gamma_L \Gamma^{\mathbb{C}_N}$  **66**  $\mathfrak{d} \subset \mathfrak{g} \subset \mathfrak{D}$ ,  $\langle \Gamma^{\mathbb{C}_N} \rangle$  1  $\langle \mathfrak{D} \Delta_{\mathbb{C}} \mathfrak{p} \Delta \Gamma^{\mathbb{C}_N}$   $\mathfrak{a} \Delta \mathfrak{a}^{\mathbb{C}_N} \Gamma_L \Gamma^{\mathbb{C}_N}$   $\mathfrak{a}^{\mathbb{C}_N} \mathfrak{p} \triangleright \langle \Gamma^{\mathbb{C}_N} \rangle$   
 $\Delta \sigma^{\mathbb{C}_N} \Gamma^{\mathbb{C}_N}$   $\mathfrak{p}^{\mathbb{C}_N} \langle \sigma^{\mathbb{C}_N} \rangle$ :



- [illegible]



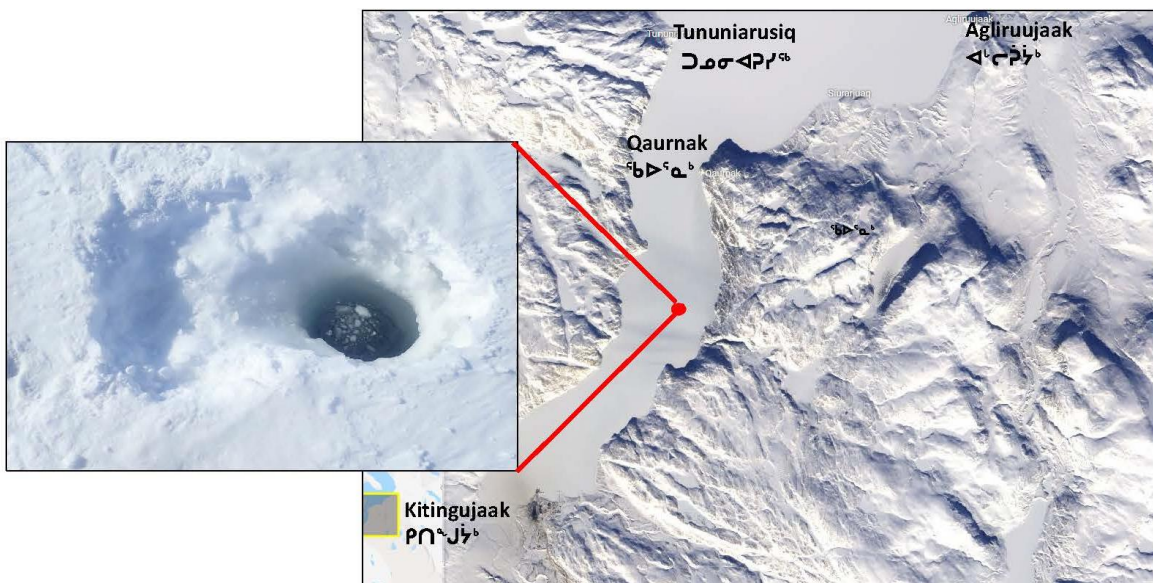
72. Δረብኃዊ ሰበርናፖለት **66** ንድጅ-ንጋና, ርዳኢ ብተጨማሪም 2(b) ኑሚርና በርአይል ዲፎ ብተራውርዶሮ ሂሳቡ  
ለΔ 17, 2020-ፒ. ልመዝና 11 የረፈር-እስተር ዲሆነሙርቱ የማይሸፈን:



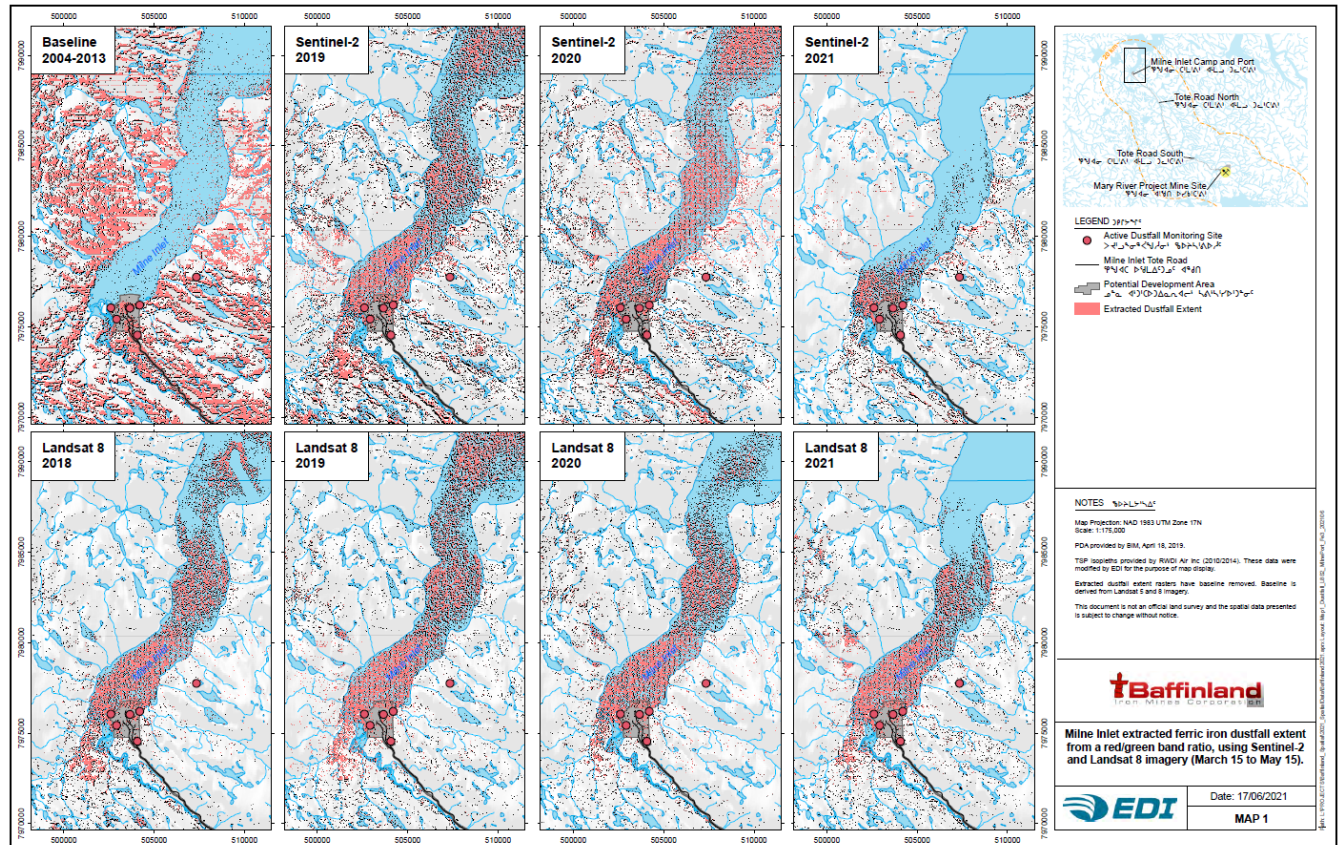
- [illegible]



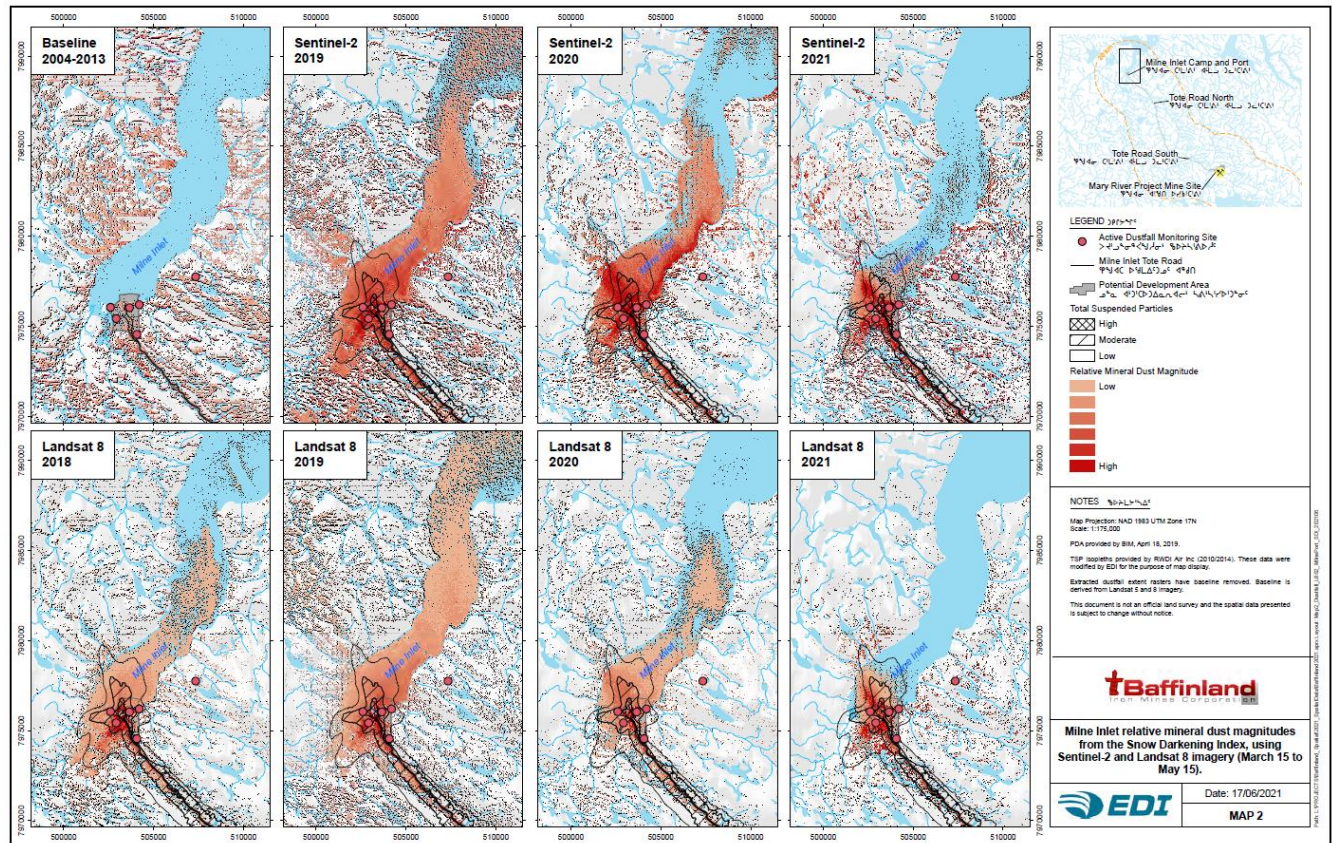
- [illegible]



- [illegible]



- [illegible]









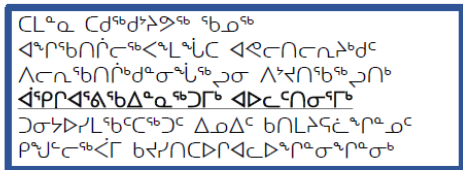
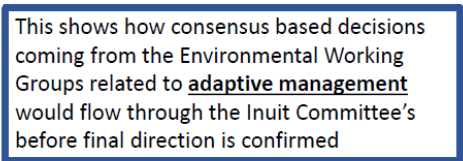








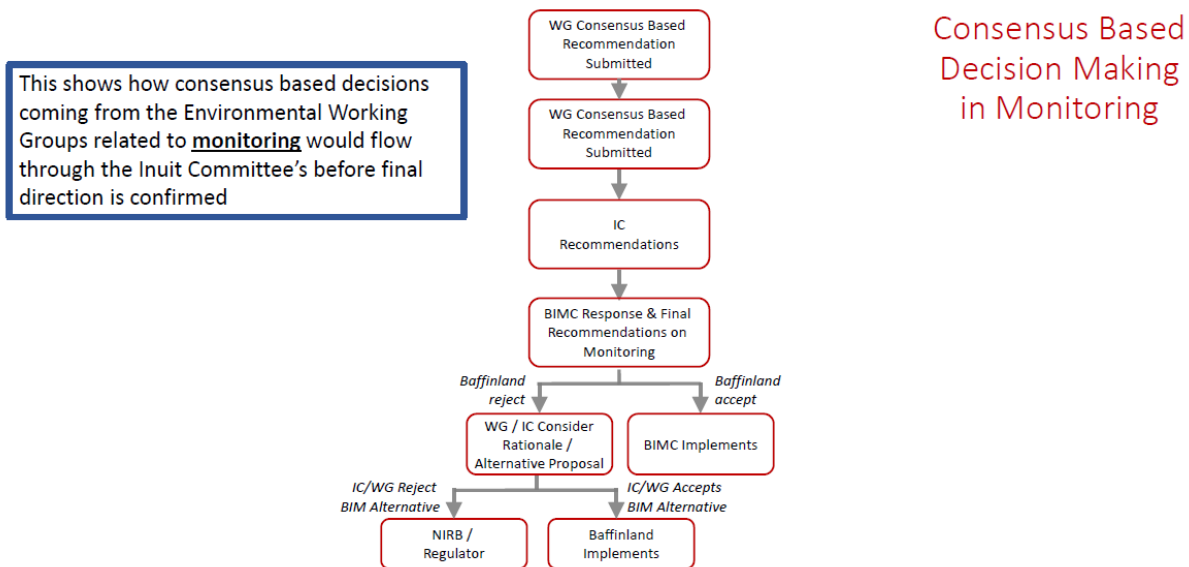


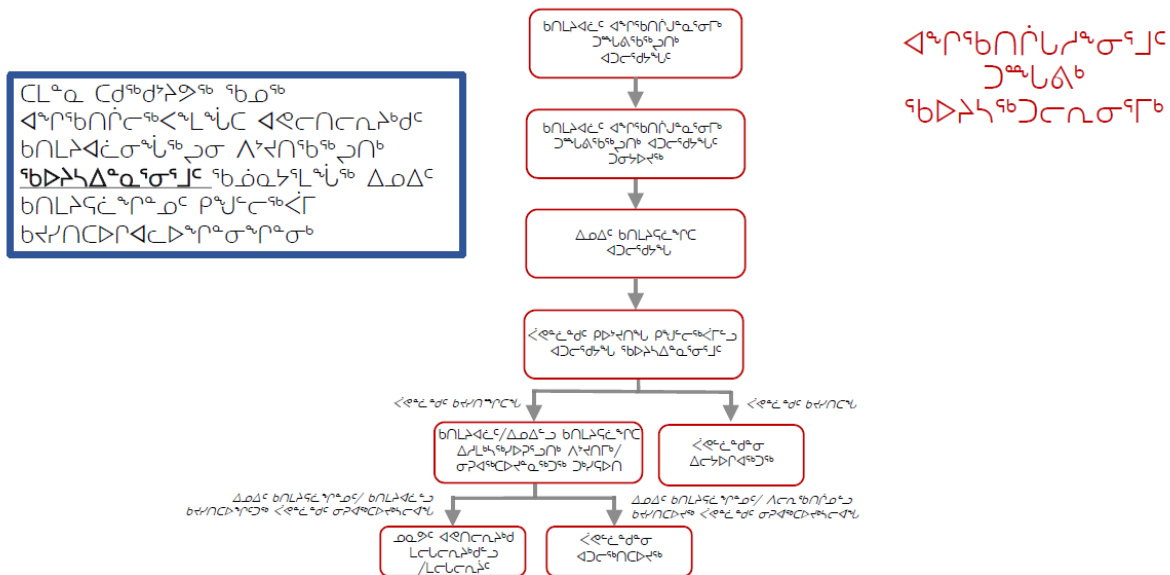


$\Delta \Gamma^j \sigma^{ab} \gamma_\mu^c \Delta^a \Gamma^j C D \Gamma^b d^c \Delta \Gamma^l C D n \sigma^{ab} \delta^a \Gamma^j \Delta^b e^c$

[illegible]

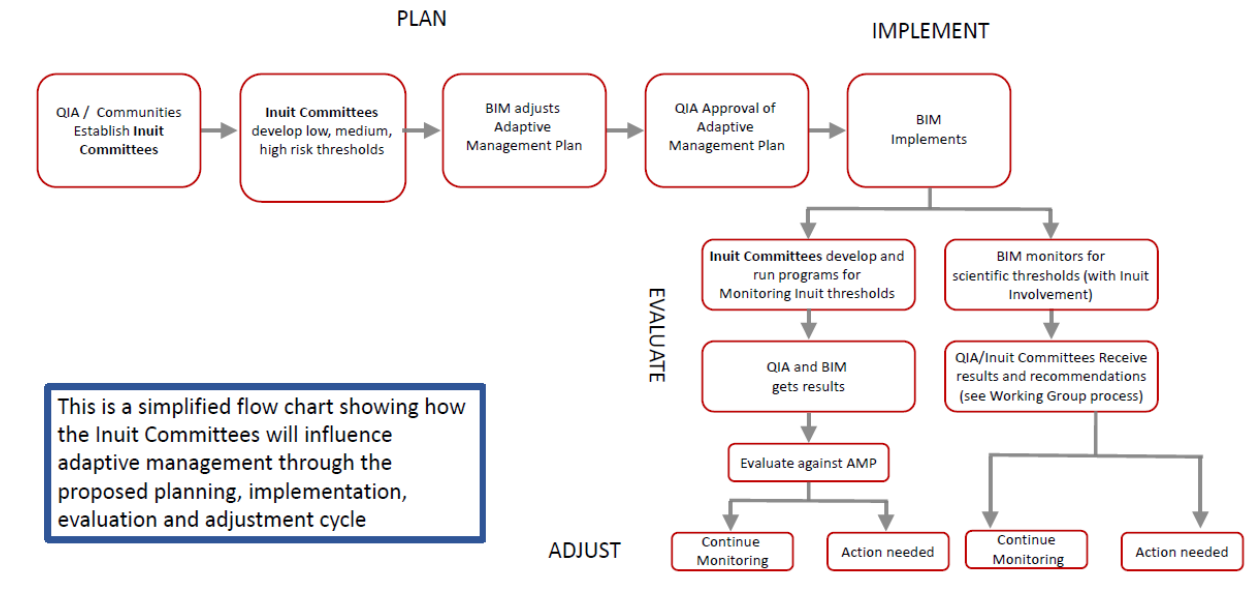
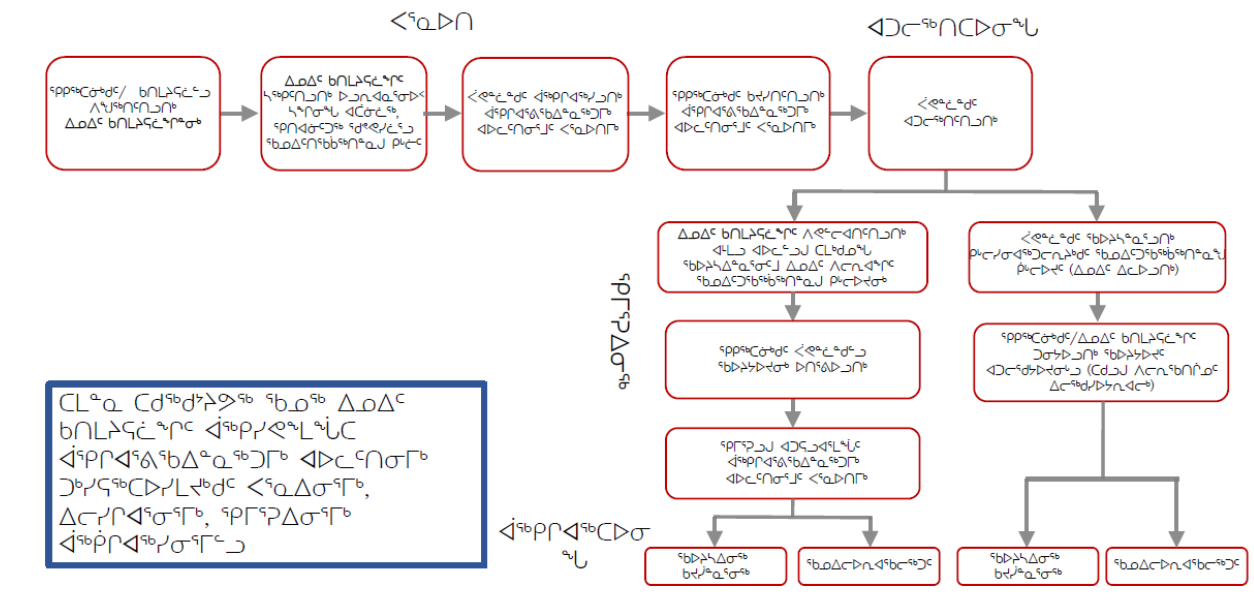
၁၇၂၈၂၁၆၂ ၂.




$$\Delta \sigma \Delta^c b \Gamma_L \Delta^c (IC) \wedge c n \Delta^q r^c \Delta^D q_b p^c \Delta^j p r \Delta^q \delta^q b \Delta^a a^q \Delta^b \Gamma^b \Delta^D c n \sigma^q j^c <^q a \Delta \sigma^q \sigma^c$$
[illegible]

၁၇၂ မှ ၁၇၆ ၃.

## Inuit Committee Roles in Adaptive Management Planning

[illegible]















- [illegible]

- L<sup>b</sup>Λ<sup>9b</sup>⊃J<sup>9b</sup> | 71





- [illegible]

$$\Lambda \triangleright \Gamma \triangleleft^{\epsilon_b} \Gamma \sigma^{\epsilon_b} \Delta \circ \Delta^C \sigma^{\epsilon} \Gamma \cap \sigma^b \Lambda \Gamma^a \underline{a}^{\epsilon} \sigma^a \Gamma^a \circ^C$$

- [illegible]



[illegible]
$$\Delta b \, r^{\zeta_b} p^{\zeta_p} \sigma^{\zeta_\sigma} \wedge^{\zeta_b} d p^b d^{\zeta_p} \omega_{\Gamma^b} \triangleleft \mathcal{D}^{\zeta_b} C^{\zeta_p} \sigma^{\zeta_b}$$

- [illegible]

[illegible]



[illegible]





## XII. ๑<sup>๕</sup> ๓<sup>๕</sup>

- [illegible]







- [illegible]

የኔብሳ, D.J., B.G. ነጌ, J.B. ርጅ ልዩረ S.H.ጽሑ። 2019. ልጅጅጅጅ ልጅጅጅጅጅጅጅ ልጅጅጅ ርጅጅጅ ልዩረ  
 የጅጅጅጅ, ልጅጅጅ: ልጅጅጅጅጅጅ ርጅጅ ርጅጅጅጅጅጅ. ልጅጅጅጅጅጅ ርጅጅጅጅጅጅ. 5: 54-61.







- [illegible]

[illegible][illegible]

- [illegible]













