

Hamlet of Coral Harbour

**Environmental Emergency
Contingency Plan**

Prepared for:

Nunavut Water Board

Table of Contents

1.0	INTRODUCTION	1
1.1	PURPOSE OF PLAN	1
1.2	OBJECTIVES	1
1.3	HEALTH AND SAFETY	2
1.4	HAMLET OF CORAL HARBOUR ENVIRONMENTAL POLICY	2
2.0	SITE DESCRIPTION	3
2.1	GENERAL SITE DESCRIPTION	3
2.2	WATER, SEWAGE AND WASTE DISPOSAL ACTIVITIES	5
2.3	HAZARDOUS MATERIALS IN THE COMMUNITY	6
3.0	SPILL RESPONSE ORGANIZATION	7
3.1	SPILL RESPONSE TEAM	8
3.2	CONTACT INFORMATION	8
4.0	SPILL REPORTING PROCEDURE	9
4.1	NWT/NUNAVUT SPILL REPORT LINE	9
5.0	ACTION PLANS	11
5.1	INITIAL ACTION	11
5.2	ENVIRONMENTAL AND HUMAN HEALTH PROTECTION AND MITIGATION MEASURES – GENERAL PROCEDURES	11
5.3	MITIGATIVE MEASURES: HYDROCARBON SPILLS	12
5.4	MITIGATIVE MEASURES: SEWAGE	13
5.5	MITIGATIVE MEASURES: SOLID WASTE	14
5.6	MITIGATIVE MEASURES: HAZARDOUS MATERIALS	15
5.7	SPILL RECOVERY ASSESSMENT	16
6.0	SPILL RESPONSE RESOURCE INVENTORY	17
6.1	ADDITIONAL PERSONNEL AVAILABLE	17
6.2	SPILL RESPONSE EQUIPMENT INVENTORY	17
7.0	TRAINING	19
8.0	ANNUAL REVIEW OF THIS ENVIRONMENTAL EMERGENCY CONTINGENCY PLAN	20
8.1	REVISIONS	20

Figures

Figure 1 Hamlet of Coral Harbour and surrounding area	4
---	---

1.0 Introduction

This Environmental Emergency Contingency Plan relates to the collection, transportation, storage, and treatment operations associated with water supply, sewage and solid waste for the Hamlet of Coral Harbour, Nunavut. This plan applies to facility operations and spill events relating to sewage, solid waste, and water supply for NWB licensed facilities.

1.1 Purpose of Plan

The impacts of spills can be catastrophic and may threaten or damage the environment, especially water supplies. As such, the Government of Nunavut (GN) requires contingency plans be written and fully implemented. The purpose of this Environmental Emergency Contingency Plan is to provide a plan of action for spills (sewage, solid waste, and petroleum products) that may occur as a result of water supply and treatment, sewage collection and treatment, and solid waste collection and disposal operations undertaken within the Hamlet of Coral Harbour, Nunavut.

The Plan also focuses on the health and safety of both workers and the general public.

This Environmental Emergency Contingency Plan will assist in implementing corrective options quickly to minimize environmental damage. Furthermore, it defines the responsibilities of key personnel and outlines procedures to effectively and efficiently contain and recover spills of sewage, solid waste, and hydrocarbon products arising from water, sewage, and solid waste, collection, transportation, storage, and treatment operations. It will assist the Hamlet in meeting the regulatory requirements related to reporting events to the appropriate authorities within the prescribed time period.

1.2 Objectives

The objectives of this Emergency Contingency Plan are to:

- Ensure the health and safety of workers and the general public (first priority at all times)
- Provide a plan with procedures so that the Hamlet and their Spill Response Team can rapidly respond to a spill situation and minimize injury to individuals and environmental damage.
- Comply with all existing regulations.
- Cooperate with other groups and agencies.
- Be prepared and able to provide an integrated team approach with various Hamlet departments and Federal and Territorial agencies

Hamlet of Coral Harbour

Environmental Emergency Contingency Plan

April 2021

- Keep staff, government officials, and Hamlet residents informed.

1.3 Health and Safety

Health and safety of workers and the public takes priority at all times. All activities must follow the requirements of the Nunavut Safety Act.

1.4 Hamlet of Coral Harbour Environmental Policy

It is the policy of the Hamlet of Coral Harbour to fully comply with all applicable legislation to ensure the protection of the environment in the territory of Nunavut. The legislation includes, but is not limited to:

- Nunavut Safety Act
- Environmental Protection Act, Section 34 – Spill Contingency Planning and Reporting Regulations
- Nunavut Waters and Nunavut Surface Rights Tribunal Act.

The Hamlet will cooperate with other groups committed to protecting the environment and shall ensure that Hamlet employees, regulatory authorities, and the public are informed on the policies and procedures developed to help protect the environment and the residents of the Hamlet of Coral Harbour.

Hamlet of Coral Harbour

Environmental Emergency Contingency Plan

April 2021

2.0 Site Description

2.1 General Site Description

This Environmental Emergency Contingency Plan is to be implemented within the Municipal boundaries of the Hamlet of Coral Harbour, Nunavut.

The Community of Coral Harbour is located within the Kivalliq Region, Nunavut, at general latitude 64°08'N and general longitude 83°10'W. The community has a population of approximately 880. Community infrastructure includes:

- A Water Supply Facility consisting of water intake on Post River, a raw water reservoir, a water treatment plant, and truckfill water station.
- A Sewage Treatment Facility consisting of a containment cell which receives trucked sewage collected from holding tanks in each building and natural tundra wetland
- A Solid Waste Management Facility, which includes a Bulky Metals Disposal area
- Diesel powered generators.

The community and surrounding area are shown in Figure 1.

Hamlet of Coral Harbour
Environmental Emergency Contingency Plan
April 2021

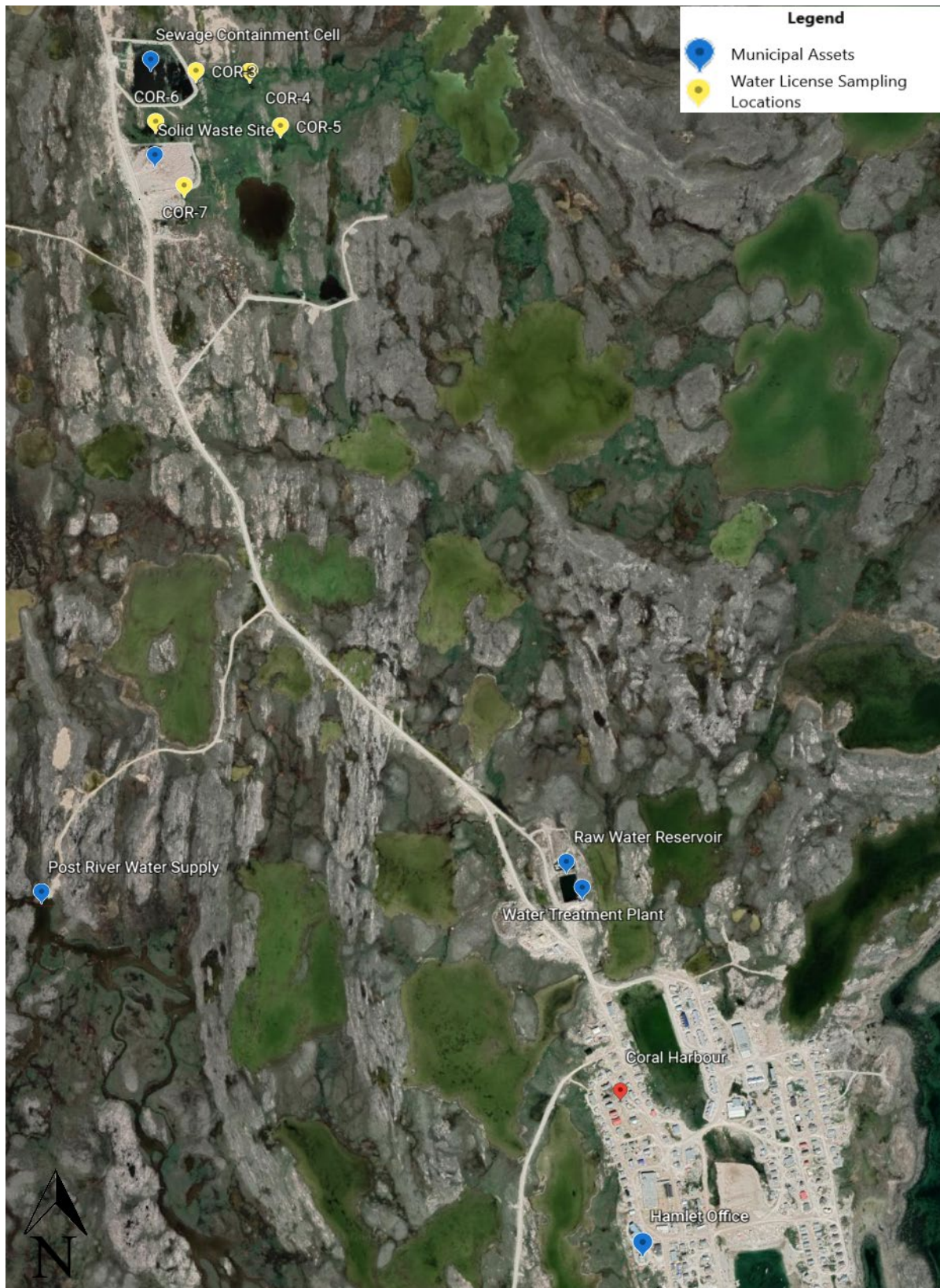


Figure 1 Hamlet of Coral Harbour and surrounding area

Hamlet of Coral Harbour

Environmental Emergency Contingency Plan

April 2021

2.2 Water, Sewage and Waste Disposal Activities

2.2.1 Water Supply and Treatment

The community is served by trucked water delivery. The Water distribution system consists of a Water intake, overland pipeline, reservoir, and Pump-house with truck-fill point/or station. The reservoir is located approximately 350 m north of the community and filled once per year from the Post River.

2.2.2 Sewage Collection

The Coral Harbour Sewage Disposal Facility consists of a fenced and bermed Containment Cell and a natural tundra Wetland. Sewage is collected from the Hamlet's houses and buildings by vacuum truck and discharged into the Containment Cell located approximately 3 km north of the community.

Potential environmental emergencies include:

- House tank spill
- Tank truck spill

2.2.3 Solid Waste Collection and Disposal

The primary Solid Waste Facility for Coral Harbour consists of an approximately 1500m² fenced and bermed disposal area for municipal solid Waste and separate bulk metal disposal area, located roughly 2.5 km northeast of the community and just south of the Sewage Disposal Area. Contaminated soil is stored at the Solid Waste Facility in 205 L steel drums and is shipped out of the community for final disposal. Potential environmental emergencies include:

- Fuel spill (from a truck)
- Uncontrolled discharge of landfill impacted surface water (leachate)
- Fire in the waste
- Hazardous waste spill.

Hamlet of Coral Harbour

Environmental Emergency Contingency Plan

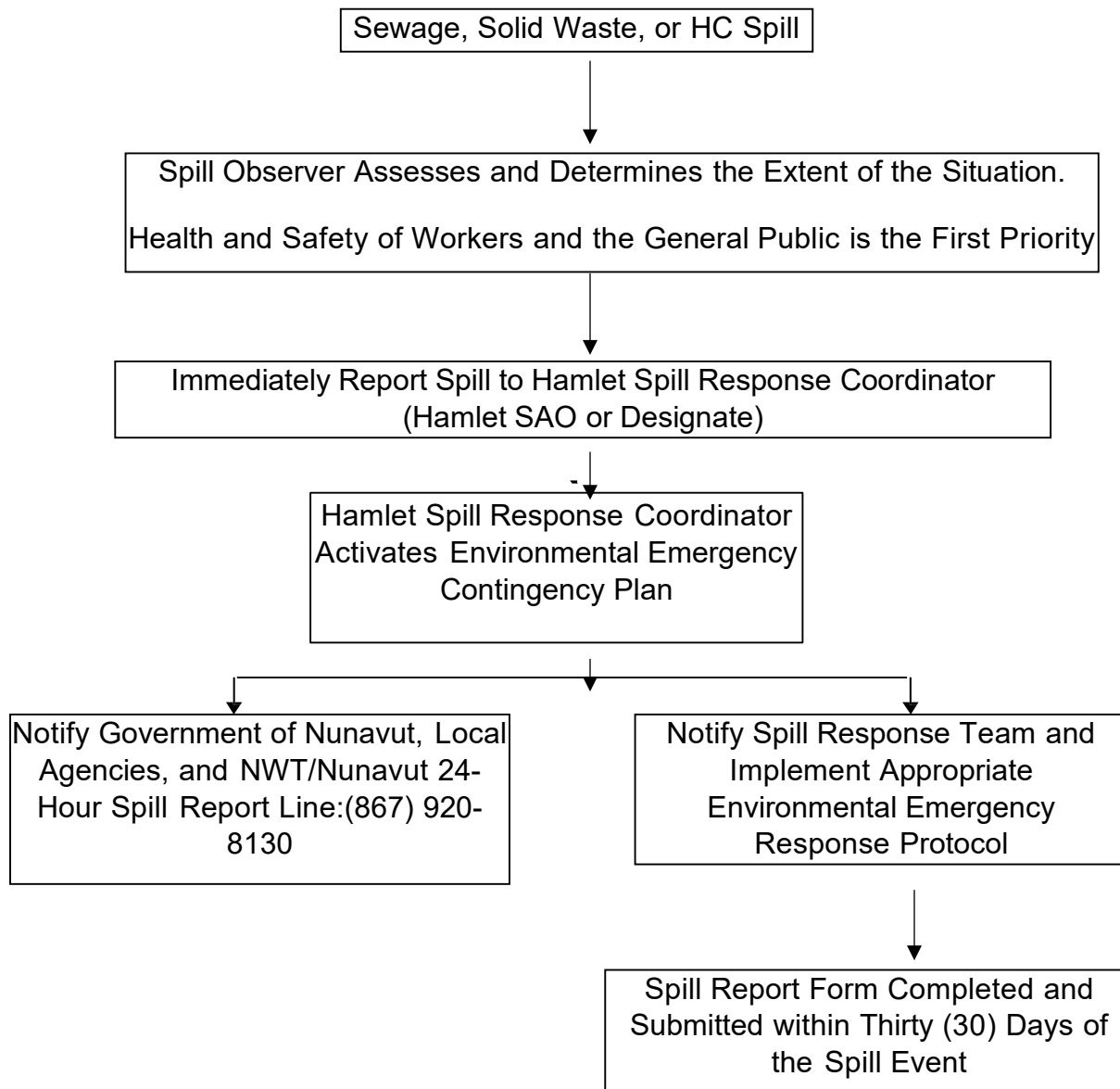
April 2021

2.3 Hazardous Materials in the Community

Material	Quantity in Community	Uses	Potential Discharge
Oil	Unknown	Vehicle operation	Overtured drums
Gear Oil	Unknown	Vehicle servicing	Overtured drums
Antifreeze	Unknown	Vehicle Servicing	Overtured container
Granular Hypochlorite	Unknown	Water Treatment	Overtured container – local spill
Gasoline	Unknown	Vehicle operation	Tank or pipe leaks
Diesel	Unknown	Power generation	Tank or pipe leaks
Jet Fuel A-1	Unknown	Aircraft	Tank or pipe leaks
Propane	Unknown	Household use	Tank leaks

3.0 Spill Response Organization

The following is a flow chart to illustrate the sequence of events that must be followed in the event of a sewage, solid waste, or HC (hydrocarbon) spill occurring during supply, distribution, collection, transportation, storage, and treatment operations:



Emergency Response Flow Chart

Hamlet of Coral Harbour

Environmental Emergency Contingency Plan

April 2021

3.1 Spill Response Team

The Hamlet Senior Administrative Officer (SAO) or their designate will serve as the Spill Response Coordinator for the Hamlet in the event of a sewage or HC spill during collection, transportation, storage, or treatment operations. The SAO of the Hamlet of Coral Harbour will appoint and train appropriate personnel to make up the Spill Response Team, which normally consist of the following personnel:

- Spill Response Coordinator (Hamlet SAO or designate)
- Hamlet Public Works Personnel.

The responsibilities of the Spill Response Coordinator are as follows:

1. Assume complete authority over the spill scene and coordinate all personnel involved.
2. Control access and ensure the health and safety of workers and the general public.
3. Evaluate the spill situation and develop an overall plan of action.
4. Activate the Environmental Emergency Contingency Plan for the Hamlet of Coral Harbour
5. Immediately report the spill to the NWT/Nunavut 24-Hour Spill Report Line at (867)920-8130, and other applicable regulatory or assistance agencies.
6. Provide regulatory agencies with information regarding the status of the clean-up activities.
7. Act as a spokesperson on behalf of the Hamlet of Coral Harbour with regulatory agencies, the public, and the media
8. Prepare and submit a report on the spill incident to regulatory agencies within 30 days of the event.
9. Obtain the assistance of regulatory agencies, consultants, and/or contractors with the skills and equipment to deal with emergency situations deemed to be beyond the capabilities of Hamlet staff.

3.2 Contact Information

A complete listing of contact information, including telephone numbers of standard regulatory agencies, Hamlet personnel, and assistance agencies who may be contacted to supply resources, expertise, and advice needed to deal with a spill emergency is included in Appendix A.

4.0 Spill Reporting Procedure

The Spill Response Coordinator must be notified immediately by any individual who is aware of any spill either by phone, email, or in person.

The following are the incident reporting procedures once the Spill Response Coordinator activates this Environmental Emergency Contingency Plan:

1. Report spills immediately to the 24-Hour NWT/Nunavut Spill Report Line Phone (867)920-8130 (Section 4.1)
2. Report immediately to the CIRNAC Manager, Water Resources in Iqaluit at (867) 975-4550 and GN-DOE (867) 975-7748
3. Notify Hamlet of Coral Harbour Fire Department
4. Fill out the NWT/Nunavut Spill Report Form (Appendix B) within thirty (30) days of the spill event occurring.

4.1 NWT/Nunavut Spill Report Line

All spills, as defined in this document, must be reported immediately to the 24-hour NWT/Nunavut Spill Report Line. The following information should be gathered prior to making the call:

- Date and time of spill (if known)
- Location and map coordinates (if known) and direction of flow of spill materials if moving.
- Party responsible for spill
- Product/material spilled and quantity estimate.
- Cause of spill.
- Note whether spill has been contained or if it is still releasing into the environment.
- Extent of contaminated area
- Factors affecting spill or recovery, such as weather conditions or terrain.
- Note whether spill containment is available.
- Action taken or proposed.
- If assistance is required
- Possible hazards to individuals, property or environment (e.g., fire, drinking water, fish, wildlife, etc.)
- Health and safety issues.

The information collected should be brief, and rough estimates made to enable the Spill Report Line and the Spill Response Coordinator to assess the situation. The information is the same as that required on the Nunavut Spill Report form that

Hamlet of Coral Harbour

Environmental Emergency Contingency Plan

April 2021

must be completely filled out and submitted within thirty days of the incident. This form is included as Appendix B.

4.1.1 Spill Response Contact List

Organization	Contact/Location	Contact Number
AANDC Water resources	Water Resource Officers - Iqaluit	Ph: (867) 975-4295 Ph: (867) 975-4500
Northwest Territories/Nunavut 24 Hour Spill Report Line		Ph: (867) 920-8130 Fax: 867-873-6924 spills@gov.nt.ca
Nunavut Department of Environment		Ph: (867) 920-8130
Environment Canada	Environmental Protection Operations, Environmental Emergencies	Ph: (780) 951-8861
Kivalliq Inuit Association	Rankin Inlet	Ph: (867) 645-5725
Fisheries Management, Department of Fisheries and Oceans.	Iqaluit	Ph: (867) 979-8000
Environmental Health Officer		Ph: (867) 645-8071 gnelson@gov.nu.ca

5.0 Action Plans

5.1 Initial Action

The instructions to be followed by the first person on the spill scene are as follows:

1. Always be alert and consider your safety and the safety of others first.
2. If possible, estimate the volume of material that has been spilled.
3. Assess the hazard of people in the vicinity of the spill.
4. If possible, and safety permits, attempt to stop the release of product to minimize potential for environmental impacts.
5. Immediately report the spill to the Spill Response Coordinator
6. Resume any effective action to contain, mitigate, or terminate the flow of the spilled material.

5.2 Environmental and Human Health Protection and Mitigation Measures – General Procedures

The environmental protection and mitigation measures outlined in the following sections are to be taken by all personnel responding to a spill event. This will reduce the chance of environmental impairment and health hazards due to a spill, release, or other incident.

The following general clean-up procedures shall apply for all spill areas within the Hamlet:

- Control access to the area and ensure the health and safety of workers and the general public.
- Always wear personal protective equipment (PPE)
- Smoking is prohibited during all spill response activities.
- Eliminate all ignition sources.
- Contain spills on soil or rock by construction of earthen dykes using available material. If soil is not available, place sorbent materials or a boom in the path of the spill. As the sorbent barrier becomes saturated, continually replace it. Fuel or other liquids lying in pools, or trenches are to be removed with pumps, buckets, or skimmers.
- If the ground is snow covered, create snow dykes, and line them with a chemically- compatible liner for containment and recovery of liquid.
- For fuel spills on water, deploy containment booms, and recovery as much fuel as possible with a work boat and skimmer if less than 1/10th of the area is covered in ice. If the area is frozen, burn fuel spills using igniters.
- Apply sorbent materials, if necessary

Hamlet of Coral Harbour

Environmental Emergency Contingency Plan

April 2021

- Assess potential for disturbance of wildlife, fish, and archaeological sites from spill or clean-up operations.
- Notify environmental authorities to discuss available and feasible disposal and clean-up options.
- Conduct required clean-up operations.
- Assess and appropriately treat any areas disturbed by clean-up activities with laboratory testing.
- Ensure that the site has been completely restored. Resume operations, only once all work is finalized and laboratory testing confirmed.

Procedures for containing spills of specific contaminants are provided in the following sections.

5.3 Mitigative Measures: Hydrocarbon Spills

Hydrocarbon spills include gasoline, diesel fuel, hydraulic fluid, lubricating oil and aviation fuel. If possible, and safety permits, stop the flow of product, which is occurring, and eliminate all ignition sources. Smoking is prohibited during all spill response activities.

5.3.1 Hydrocarbon Spill on Soil, Gravel, Rock, or Vegetation

- Build a containment berm using soil material or snow and place a plastic tarp at the foot of the berm easily capture the spill after all vapours have dissipated.
- Remove the spill by using absorbent pads or excavating the soil, gravel or snow.
- Remove spill splashed on vegetation using particulate absorbent material.

5.3.2 Hydrocarbon Spill on Water

- Use containment boom to capture spill for recovery after vapours have dissipated.
- Use absorbent pads to capture small spills.
- Use a petroleum skimmer for larger spills.
- GN-DOE requires that Environment Canada be consulted regarding clean-up methods.

5.3.3 Hydrocarbon Spill on Ice and Snow

- Build a containment berm around spill using snow.
- Remove spill using absorbent pads or particulate sorbent material.

Hamlet of Coral Harbour

Environmental Emergency Contingency Plan

April 2021

- The contaminated ice and snow must be scraped and shovelled into plastic buckets with lids, 205 litre drums, and/or polypropylene bags.
- GN-DOE requires that Environment Canada be consulted regarding clean-up methods.

5.3.4 Hydrocarbon Contaminated Material Storage and Transfer

In the absence of a landfarm, soil and gravel contaminated by hydrocarbons should be bagged, contained, and transported out of the community for proper disposal.

As space permits, small quantities of water, ice, snow, vegetation, and cleanup supplies contaminated by HC may be stored in labeled drums in the hazardous waste storage facility in accordance with normal operating procedures. If the quantity of contaminated material makes storage in drums unfeasible, the Hamlet shall contact the appropriate regulatory agencies before removing any materials.

5.4 Mitigative Measures: Sewage

If possible, and safety permits, stop the flow of sewage escaping to the environment.

A small spill (truck leak or household tank leak) is not a significant environmental issue, site control containment and clean up can be accomplished without significant concerns. Dilution with water is an effective remedy for any residual.

In the event of a catastrophic failure of the sewage lagoon, which allowed a large volume of partially treated sewage to escape, efforts should focus on re-establishing containment. The following mitigative measures would follow:

- Control flow and attempt to pump sewage back into containment.
- Cordon off the area and warn the public
- Maximize the length of the flow path of the sewage in the wetland through ditching and diversion berms.
- Dilute with water pumped from local streams.
- Sample along the flow path and direct efforts to areas of most concern
- Recover solids as best as possible while limiting the environmental impacts.

5.4.1 Sewage Spill on Soil, Gravel, Rock, or Vegetation

- Build a containment berm using soil material or snow and place a plastic tarp at the foot of the berm to easily capture the spill, and to prevent sewage from entering any water body.
- Remove the spill by using vacuum trucks or excavating the soil, gravel, or snow.

Hamlet of Coral Harbour

Environmental Emergency Contingency Plan

April 2021

5.4.2 Sewage Spill into Water

Use containment boom to capture spill, and pump contaminated water into vacuum trucks.

- Deposit contaminated water in the Hamlet sewage lagoon
- As a minimum, monitor the affected water body by sampling for Biological Oxygen Demand (BOD), Total Suspended Solids (TSS), ammonia (NH₃), and faecal coliforms (FC)
- Environment Canada should be contacted regarding clean-up methods.

5.4.3 Sewage Spill on Ice and Snow

- Build a containment berm around spill using snow.
- Remove spilled sewage and contaminated snow and ice and dispose of it at the Hamlet sewage lagoon.
- Environment Canada should be contacted regarding clean-up methods.

5.4.4 Sewage Storage and Transfer

All contaminated water, ice, snow, soil, and clean-up supplies will be deposited to the Hamlet sewage lagoon (liquid or frozen liquid) or landfill facility (solid), as appropriate.

Environment Canada should be contacted regarding clean-up methods.

5.5 Mitigative Measures: Solid Waste

5.5.1 Solid Waste Spill on Soil, Gravel, Rock, or Vegetation

- Physically remove the spilled solid waste from the area, and deposit in the Hamlet Solid Waste Management Facility.

5.5.2 Solid Waste Spill into Water

- Use containment boom to capture soil waste for recovery.
- Physically remove the spilled solid waste from the water, and deposit in the Hamlet Solid Waste Management Facility
- Capture any sheen from the water using absorbent pads or skimmer, and deposit any used absorbent pads to the Hamlet Solid Waste Disposal facility
- Environment Canada should be contacted regarding clean-up methods.

5.5.3 Solid Waste Spill on Ice and Snow

- Build a containment berm around spill using snow.

Hamlet of Coral Harbour

Environmental Emergency Contingency Plan

April 2021

- Physically remove the spilled solid waste and deposit in the Hamlet Solid Waste Management Facility
- Environment Canada should be contacted regarding clean-up methods.

5.5.4 Disposal

Any solid waste shall be transferred to the Hamlet Solid Waste Management Facility.

5.6 Mitigative Measures: Hazardous Materials

5.6.1 Hazardous Solid Waste Spill on Soil, Gravel, Rock, or Vegetation

- Physically remove the spilled hazardous solid waste from the area, and store in the Hazardous Waste Storage Area at the Hamlet Solid Waste Management Facility.

5.6.2 Hazardous Solid Waste Spill into Water

- Use containment boom to capture solid hazardous waste for recovery.
- Physically remove the spilled solid waste from the water, and store in the Hazardous Waste Storage Area at the Hamlet Solid Waste Management Facility
- Capture any sheen from the water using absorbent pads or skimmer and store any used absorbent pads as hazardous waste.

5.6.3 Solid Waste Spill on Ice and Snow

- Build a containment berm around spill using snow.
- Physically remove the spilled hazardous solid waste and store in the Hazardous Waste Storage Area at the Hamlet Solid Waste Management Facility.

5.6.4 Disposal

Any solid hazardous waste shall be transferred to the Hazardous Waste Storage Area at Hamlet Solid Waste Management Facility until it can be properly characterized and shipped out of the community.

The GN-DOE monitors the movement of hazardous waste through the use of a tracking document known as a Waste Manifest. A Waste Manifest must accompany all movements, and all parties must register with DOE by contacting:

Sean Noble (867) 975-7769 snoble@gov.nu.ca

Hamlet of Coral Harbour

Environmental Emergency Contingency Plan

April 2021

Michele LeBlanc-Havard (867) 975-7726 mleblanc-havard1@gov.nu.ca

5.7 Spill Recovery Assessment

In order to determine whether a spill has been successfully remediated, samples of the soil and/or water within the spill containment area and surrounding the area, are to be collected and sent to an accredited Canadian Association of Environmental Analytic Laboratories (CAEAL) laboratory to be analyzed for the chemical parameters contained expected in the spill material. If concentrations of the spill chemicals are not detected, or are at concentrations below the applicable Territorial, Federal, or CCME regulations/criteria, the spill clean-up will be determined a success. Clean-up operations may then cease.

Refer to the Environmental Monitoring Program and Quality Assurance/Quality Control Plan for the Hamlet of Coral Harbour for a description of sampling protocols and parameters.

Sampling and monitoring results (air, sediments, water, and soil) will be compared to the applicable landuse classification of the site (residential, commercial, industrial, etc.), as contained within the Canadian Environmental Quality Guidelines (CCME, 2007). Should NWB Water License or Nunavut guideline criteria exist that are applicable to the situation, then the most stringent criteria should be followed.

Depending on the nature of the spill or emergency, the material requiring clean-up and handling must be handled and disposed of in accordance with Nunavut Guidelines for Industrial Waste Discharges or General Management of Hazardous Waste.

Refer to the Monitoring Program and Quality Assurance/Quality Control Plan, Hamlet of Coral Harbour, for directions on obtaining sample bottles, conducting sampling, and laboratory analysis of samples. Refer to the following documents for the handling and disposal of liquid and solid waste within the Hamlet of Coral Harbour:

- Solid Waste Management Facility Operation and Maintenance (O&M) Plan
- Sewage Treatment Facility Operation and Maintenance (O&M) Plan.

6.0 Spill Response Resource Inventory

6.1 Additional Personnel Available

In addition to Hamlet Public Works staff, the Coral Harbour Fire Department is available to assist in spill response and clean-up activities. Personnel from the local RCMP Detachment will be available for securing the site from unauthorized individuals, closing roads, etc. The Community Health Centre has personnel to assist in the treatment of anyone injured during the emergency.

Environmental consulting companies can provide technical guidance and spill response impact evaluation, remediation, and post remedial confirmatory sampling.

6.2 Spill Response Equipment Inventory

Within the community, there is some equipment available to assist in responding to a spill including heavy equipment (i.e., vacuum trucks, dozer, front end loader, and grader), as well as various handheld tools including shovels. In addition, the Hamlet spill kit should be available during spill incident response operations. Each spill kit should contain the following supplies.

Composition of Spill Kit

	Quantity
• 360 litre polyethylene over pack drum	1
• oil sorbent booms (5" X 10')	6
• oil sorbent sheets (16.5" X 20" X 3/8")	100
• drain cover (36" X 36" X 1/16")	1
• Caution tape (3" X 500')	1
• 1lb plugging compound	1
• Nitrile gloves (pair)	4
• Safety goggles (pair)	4
• Tyvek coveralls (pair)	4
• instruction booklet	1
• printed disposable bags (24" X 48")	10

Sorbent capacity of each spill kit is 240 litres.

Hamlet of Coral Harbour**Environmental Emergency Contingency Plan**

April 2021

The spill response kits should be stored in the on-site locker at the Hazardous Waste Storage Area provided for this purpose. Some equipment may be stored in other areas throughout the community.

7.0 Training

All members of the Spill Response Team should be trained in the safe operation of all machinery and tools to help prevent sewage solid waste and hazardous material spills. All Public Works staff should also be trained for initial spill response. Annual refresher exercises should be conducted to review the procedures of this Environmental Emergency Contingency Plan with all members the Spill Response Team, including members of the local volunteer fire department, RCMP Detachment, and Community Health Centre.

Spill Response Team training should include the following aspects:

- Spill awareness and prevention
- Methods of detection
- Types of spills and seasonal considerations
- Reporting procedures and initial responses
- Spill response kit familiarization
- Clean-up and site remediation methods
- Occupational health and safety including proper selection and use of protective equipment.

8.0 Annual Review of this Environmental Emergency Contingency Plan

As part of the preparation of the Annual Report to the Nunavut Water Board as required by the Water License, the Hamlet should review and update the information contained within this plan. The purpose of the update is to ensure all changes to regulations are incorporated into this plan, along with the use of any new technology or method advances, to prevent or stop a spill and to mitigate and/or remediate a spill. This ensures that the plan adapts as the Hamlet grows, to ensure the community is properly prepared in the event of an incident.

Staff training must accompany the use of this document.

Annual refresher training of personnel should be completed after any revisions to this document have been approved. This will familiarize personnel with the updated plan, and to provide a rapid and coordinated response.

8.1 Revisions

Date	Changes
June 2021	Added spill response flow chart
June 2021	Added quantities of potential contaminants
June 2021	Updated contact information for DOE
June 2021	Updated contact information for Hamlet
June 2021	Added a table of revisions and when they were made

Appendix A

Contact Information

Contact Information – Hamlet of Arviat

Contact	Location	Telephone Number	Fax Number
Hamlet of Coral Harbour SAO	Coral Harbour	(867) 925-8868	(867) 925-8233
24-Hour NWT/Nunavut Spill Report Line	Yellowknife	(867) 920-8130	(867) 873-6924
INAC–Water/Wastewater Resources Manager	Iqaluit	(867) 975-4550	(867) 979-6445
CGS Community Support - Mnager, Municipal Works	Iqaluit	(867) 975-5478	-
Environment Canada - Inspector	Iqaluit	(867) 975-4644	(867) 979-4594
Fire Department	Coral Harbour	(867) 925-4422	-
RCMP Detachment	Coral Harbour	867-925-0123	-
Community Health Centre	Coral Harbour	867-925-9916	-
GN-DOE Manager of Pollution Control <i>Ian Rumbolt</i>	Iqaluit	(867) 975-7748	(867) 975-6445

Appendix B

NWT Spill Report

[illegible]