

[illegible]

1 ካረፈረፍ ርዕረፍ፡፡

[illegible][illegible][illegible]

በበኖሪ፣ በበኖሪ፣ Figure 1-1 ነፃነት፣ ጋር፣ ካልተፈጸመ፣ ካልተፈጸመ፣



5

5.1

[illegible][illegible]

5.2

[illegible]

- [illegible]

[illegible]

ᐅᐭᐱᐅᐱᐅ ᐱᐭᐭ ᐅᐭᐭᐭᐭᐭᐭ ᐭᐭᐭᐭᐭᐭᐭᐭᐭ ᐱᐭᐭᐭᐭᐭᐭ 2021 ᐭᐭᐭᐭᐭᐭᐭᐭᐭ.

5.3

ከዓብይቲ፣ ክልላዊና ልማት ሚኒስቴር ለጥያቄው ለጥያቄው ለጥያቄው ለጥያቄው Table 5-1. ርዕሰ ምረቃ ለጥያቄው ለጥያቄው ለጥያቄው ለጥያቄው

317071-00037-00-EN-RPT-0004_R0_Inuktitut.docx



5.4 ንግድና ሥራ ለማድረግ ያስፈልጋል

[illegible]

5.4.1 ሥልጣን ማግኘት

[illegible]

5.4.2 $\sigma \triangleright^c \supset^c \sigma^c \vdash \rho \supset \rho^c \triangleright \neg \neg \rho^c \triangleright \neg \neg \rho^c \delta \delta \vdash$

[illegible]

በሰላም 12 ሙከራዎች ሙከራው ለሰላም Logan Drilling ሙከራው ለሰላም Advisian (ርዕሰ
 ሰላም (ሰላም Figure 5-1). ሙከራው ለሰላም 3.00 ሰላም 8.26 ሰላም (mbbsb).
 ሙከራው ለሰላም 24-ው ሙከራው ለሰላም ሙከራው ለሰላም. ሙከራው ለሰላም ለሰላም
 ለሰላም ሙከራው ለሰላም.

[illegible][illegible]

5.4.3 $\sigma \triangleright^c \mathcal{C} \triangleright^c \triangleright \nabla^b \mathcal{C}^c \delta^a \Gamma$

[illegible][illegible][illegible]

FILE LOCATION: U:\V\RA\31707100037_P\WGS_ArcBay\CES10_Eng\16_Geomatics\01_MXD\Regulator_Annual_Reports\NR1\2021\Figs-1_2021_Investigation_Locations_SCH_Inuktituk.mxd



Point ID	Easting (E)	Northing (N)
BH21-01	8105041.90	559993.40
BH21-02	8105052.90	560083.30
BH21-02B	8105049.40	560079.80
BH21-03	8105058.70	560022.30
BH21-04	8105076.30	559968.40
BH21-05	8105038.90	559901.20
BH21-06	8104959.00	559858.80
BH21-07	8104949.10	559939.50
BH21-08	8105092.80	559938.80
BH21-09	8105003.20	560012.80
BH/MW21-10	8105096.90	559862.30
BH/MW21-11	8105175.40	559966.90

Legend

Yellow line: Boundary of the study area

Dashed blue line: Boundary of the study area

Dashed cyan line: Boundary of the study area

Circle with crosshair: Monitoring point location

Circle with dot: Monitoring point location

Scale bar: 0, 15, 30, 60 Metres

Scale: 1:1,500

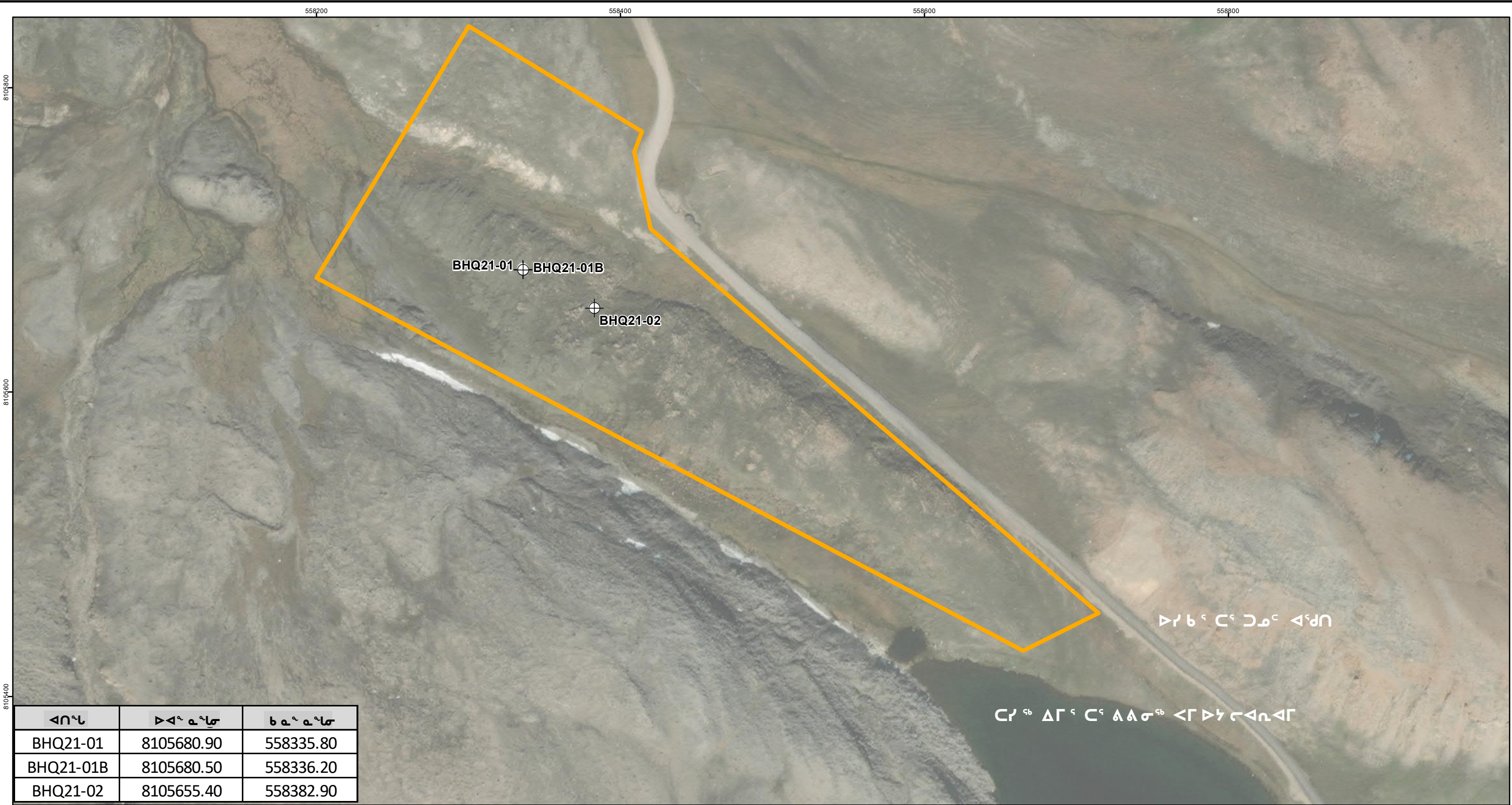
WGS 1984 UTM Zone 16N

North arrow

Locations approximate.
SCH configuration is the April 2021 configuration
(concurrent with Phase III ESA investigation).

ΔL 9 ΓΔCεητ 6 d 6 b a C Γ P 6 Δ6C ΔΓ Δ6C ΔΓ Δ6 d Δ6 Δ 6 ΔΔ6 9 6			
Γ P 6 Δ6C ΔΓ Δ6C ΔΓ Δ6 d Δ6 2021 6Δτ 9 6 ΔΔ6C			
	Date: 21-DEC-21	Drawn by: KR	Edited by:
	Project No. 317071-00037		
	FIG No. 5-1		
REV A			
"This drawing is prepared solely for the use of our customers as specified in the accompanying report. Worley Canada Services Ltd. assumes no liability to any other party for any representations contained in this drawing."			

FILE LOCATION: U:\VVR\31707100037_P\WGS_ArcBayCES10_Eng\16_Geomatics\01_MXD\Regulator_Annual_Reports\NR1\2021\Figs-2_2021_Investigation_Locations_Quarry_Inukluuk.mxd



ᐱᕐᕐᕐ	ᐅᐱᕐ ᕐᕐᕐ	ᕐᕐ ᕐᕐᕐ
BHQ21-01	8105680.90	558335.80
BHQ21-01B	8105680.50	558336.20
BHQ21-02	8105655.40	558382.90

ᐅᐱᕐ ᕐᕐᕐ ᐅᐱᕐ ᕐᕐᕐ

ᐅᐱᕐ ᕐᕐᕐ ᐅᐱᕐ ᕐᕐᕐ

ᐅᐱᕐ ᕐᕐᕐ ᐅᐱᕐ ᕐᕐᕐ

0 25 50 100

Metres

1:2,500

WGS 1984 UTM Zone 16N

N

Locations approximate.
SCH configuration is the April 2021 configuration
(concurrent with Phase III ESA investigation).

ᐅᐱᕐ ᕐᕐᕐ ᐅᐱᕐ ᕐᕐᕐ

ᐅᐱᕐ ᕐᕐᕐ ᐅᐱᕐ ᕐᕐᕐ

ᐅᐱᕐ ᕐᕐᕐ ᐅᐱᕐ ᕐᕐᕐ

Date: 21-DEC-21	Drawn by: KR	Edited by:	App'd by:
Project No. 317071-00037		REV A	
FIG No. 5-2		REV A	

"This drawing is prepared solely for the use of our customers as specified in the accompanying report. Worley Canada Services Ltd. assumes no liability to any other party for any representations contained in this drawing."

5.4.4 $\Delta^b \Delta^c \triangleleft^L L \triangleright \Delta^b \sigma^c$ ካልገኝም $\Delta^b \Delta^c$

Δ⁺Δ⁻ ላሊጋ ልኬሲታ በበኖርሮጋቡ ነጋዳኝሮጋቡ ርዕሲ ነጋዳኝልድሮ. ርሊግ ነጋዳኝሮጋድ ልከሊጋ ድህረግጋሊጋ፣ ሊጋሊጋሮጋቡ ላሊጋ ሊጋሊጋሮጋቡ ላሊጋ ሊጋሊጋሮጋቡ.

[illegible]

ፈተናዊ ልብረት ልክሌሎች ንድልንጋርዶሮ ንድልንጸሳጦጦ ደብዳቤያሪድጋሮ ዖረግነድሙም ያዘመኑ ለግንደሚያውም ልራክሃይጠ፡ BTEX, styrene, MTBE, PHC F1-F4, VPH, TEH, EPH, LEPH/HEPH, polycyclic aromatic hydrocarbons (PAHs), metals, polychlorinated biphenyls (PCBs), total inorganic carbon (TIC), total organic carbon (TOC), PCBs, particle size, PAHs toxicity characteristic leaching procedure (TCLP) and metals TCLP.

[illegible]

5.4.5 $\mathcal{M}^{\text{c}}_{\text{c}} \Delta b^{\text{c}}_{\text{c}} \triangleright \sigma^{\text{c}}_{\text{c}}$

[illegible]

5.5 $\Delta\phi\Delta^c$ ንፕላንክ ምዕራፍ ልዩ ምዕራፍ ንክሊንካል ምዕራፍ

[illegible][illegible][illegible]



6

[illegible]

7

[illegible]



8

[illegible]

ᐃᓂᓄᓇᓕᓗᒃ ᐅᓚᓴᓴ :

Petra Nasty

Λ᾿᾿᾿ ᾿᾿᾿᾿, Petra Stastny, B.Sc., G.I.T

ᄡᄢᄣᄤᄥ ᄡᄢᄣᄤᄥ:

Chen

Δ^bΔ^cΔ^d Δ^eΔ^f Victoria Burdett-Coutts, M.Sc., R.P.Bio



Diane Pinto, M.Sc.

ለኖረበት ምክርቤት ለሆነ ለሚኖሩ ርዕሰ ልጆችና ለሌሎች ልጆች ምክርቤት

Advisian-Ikpiaryuk JV



9

- Advisian. (2020a). Non-Technical Annual Report: Nunavut Research Institute - Four Harbours Feasibility Studies - License #02 058 19N-M. Prepared for Fisheries and Oceans Canada - Small Craft Harbour. (*Document No. 307071-01306-00-EN-RPT-0001, Revision 0*) February 2020.

Advisian. (2020b). Non-Technical Annual Report: Nunavut Research Institute -License #02 058 19N-M, Arctic Bay Harbour Development. Prepared for Public Service and Procurement Canada. (Document No. 317071-00037-00-EN-RPT-0001, Revision 0) December 2020.

CFEM. (2006). (Canadian Foundation Engineering Manual). ISBN 0-920505-28-7. Fourth Edition, Canadian Geotechnical Society, Identification and Classification of Soil and Rock. 504p. (Ch.3, Pg. 13-30).

IIBA. (2019). Allurutiup Imanga National Marine Conservation Area. Inuit Impact and Benefit Agreement. August 1, 2019. Available at: <https://www.qia.ca/wp-content/uploads/2019/09/2019-08-01 TINMCA-IIBA FULLY-SIGNED-1.pdf> Accessed: November 2021.

NPC. (2000). North Baffin Regional Land Use Plan. Nunavut Planning Commission. Available at: https://www.nunavut.ca/sites/default/files/north_baffin_regional_land_use_plan.pdf Accessed: January 2021.



Δελτοειδής Attachment 1 <π>π<π>
ππ<π>π<π>

Attachment 1 –



ᐃᓴᑦᕐᕈᐃᓂ 1 ᓂᐃᓪᕐᕋᕋᐅᐊᕐ ᐱᐃᐭ, ᐤ 24, 2021



ᐅᓄᑦᕈᑦᕋᑦ ᐸᓂᑦ Logan Drilling **ᐱᓇᕆᑦᕈᑦᕋᑦ ᐸᓂᑦ** ᐭᓂ 24, 2021



ᐃᑭᑭᑦᐃᑦ 3 ᐃᑭᑭᑦᐃᑦ ᐃᑭᑭᑦᐃᑦ ᐃᑭᑭᑦᐃᑦ. ᐃᑭ 26, 2021



ᐃᑭᑭᑦᐃᑦ 4 ᐃᑭᑭᑦᐃᑦ ᐃᑭᑭᑦᐃᑦ ᐃᑭᑭᑦᐃᑦ ᐃᑭᑭᑦᐃᑦ, ᐃᑭ 27, 2021



ᐃᑭᑭᑦᐱᑦᐱᑦ 5 ᐃᑭᑭᑦᐱᑦᐱᑦ ᐃᑭᑭᑦᐱᑦᐱᑦ ᐃᑭᑭᑦᐱᑦᐱᑦ BH21-01, ᐃᑭ 28, 2021



ᐃᑭᑭᑦᐱᑦᐱᑦ 6 ᐃᑭᑭᑦᐱᑦᐱᑦ ᐃᑭᑭᑦᐱᑦᐱᑦ BH21-02, ᐃᑭ 28, 2021



ᐊᓴᔭᐱᑦ Ꮜᐅᑦᑐᑦᐅᓯᐱᓂᑦ ᑲᐅᓴᑦᕐᕈᓪᐳᓂᑦ ᐃᓄᓂᕐᕈᓂ 0.81 – 1.42ᑦᐅᑦ Ꮜᐅᑦᑐᑦᐱᑦ BH21-01-02, ᐤ 28, 2021



ᐅᓂᕈᕋᕐ ᐱᕈᕐ ᐸᕈᕐ ᐸᕈᕐ BH21-07, ᐭᕈ 31, 2021

[illegible]

ᐱᕈᕐᑭᐅᕐᑦ 10 ᐃᓯᓯᐅ ᐱᕈᑦ ᑕᓯᓯᐅ ᓯፆᑦᑕᓯᐅ ᐃᐃᐤᑦ 5, 2021

[illegible][illegible]



ᐃᑦᐱᑦᐱᑦᐱᑦᐱᑦ 13 ᐃᑦᐱᑦᐱᑦᐱᑦᐱᑦᐱᑦ ᐃᑦᐱᑦᐱᑦᐱᑦᐱᑦ ᐃᑦᐱᑦᐱᑦᐱᑦᐱᑦ, ᐃᑦᐱᑦᐱᑦᐱᑦᐱᑦ 5, 2021




ᐃᑦᐱᑦᐱᑦᐱᑦᐱᑦ 14 ᐃᑦᐱᑦᐱᑦᐱᑦᐱᑦᐱᑦ ᐃᑦᐱᑦᐱᑦᐱᑦᐱᑦ BHQ21-01, ᐃᑦᐱᑦᐱᑦᐱᑦᐱᑦ 5, 2021



ᐃᑭᑭᑦᐱᑦᐱᑦ 15 ᐃᑭᑭᑦᐱᑦᐱᑦ ᐃᑭᑭᑦᐱᑦᐱᑦ BHQ21-01, ᐃᐃᐃᑦ 6, 2021



ᐃᑭᑭᑦᐱᑦᐱᑦ 16 ᑭᐃᑭᑦᐱᑦᐱᑦ ᐃᑭᑭᑦᐱᑦᐱᑦ BH/MW21-10, ᐃᐃᐃᑦ 8, 2021



Διευθυντής Attachment 2 σπουδαστής
μαθητής

Attachment 2 –Drilling Coordinates

በበናሃረጊጅ 1 Table 1 ልጅ ለጥገና ማረጋገጫ ልማት

ጽጌጽ	ወጪ ልማት	ለኪነት ልቦና (ፋ)	ረጅም ጊዜ (ፋ)	ፍልጎች ለፋ (ፋ)	ፈጣሪነት (ፋ)	ፍጥነት (ፋ)
BH21-01	ጥጥር ወጪ ልማት	6.99	-4.91	4.7	8105042	559993.4
BH21-02	ጥጥር ወጪ ልማት	8.26	-11.12	6.04	8105053	560083.3
BH21-02B	ጥጥር ወጪ ልማት	4.54	-11.4	ፋጥነት	8105049	560079.8
BH21-03	ጥጥር ወጪ ልማት	6.77	-6.05	4.6	8105059	560022.3
BH21-04	ጥጥር ወጪ ልማት	6.6	-2.06	5.26	8105076	559968.4
BH21-05	ጥጥር ወጪ ልማት	3.87	-0.83	2.3	8105039	559901.2
BH21-06	ጥጥር ወጪ ልማት	3.02	-1.43	1.28	8104959	559858.8
BH21-07	ጥጥር ወጪ ልማት	4.03	-6.81	2.6	8104949	559939.5
BH21-08	ጥጥር ወጪ ልማት	4.03	-0.46	3.93	8105093	559938.8
BH21-09	ጥጥር ወጪ ልማት	4.88	-9.83	4.5	8105003	560012.8
BH21-10	ጥጥር ወጪ ልማት	3.00	4.1	ፋጥነት	8105097	559862.3
BH21-11	ጥጥር ወጪ ልማት	3.00	3.1	ፋጥነት	8105175	559966.9
BHQ21-01	ፈጣሪነት	6.17	109.5	ፋጥነት	8105681	558335.8
BHQ21-01B	ፈጣሪነት	12.80	109.5	ፋጥነት	8105681	558336.2
BHQ21-02	ፈጣሪነት	15.11	113.1	ፋጥነት	8105655	558382.9