

▷⁹ḅ_ḥ▷^ḥḥ: 7787723100, ḥḅḥ^ḥḥ:

$\epsilon_b \Delta^c \dot{\bar{N}}_0 \sigma^b \wedge c_n d\epsilon^f b^g d n d^a l^a \sigma^b$

ᐱᕈᑦ ᐅᓇᐅᓄᑦ: For 2022, while based out of Baker Lake, Forum is proposing a thirty-day program for a six-person helicopter supported exploration program likely in July or August. Activities will include examining drill core at the previous campsite occupied by Cameco on Aberdeen Lake and ground gravity surveys in the Tatiggaq and other potential drill target areas. Airborne geophysical surveys may also be initiated in the summer of 2022. The Tatiggaq uranium deposit previously identified by Cameco will be the focus for future drilling, as well as other areas previously identified by Cameco that are prospective for economic uranium deposits. Mineral claims held by Forum Energy Metals Corp. include Crown Lands as well as Inuit Owned surface land. Forum will bring fuel, two-three drills, and other camp and exploration-related equipment and supplies to Baker Lake by barge in 2022 to build a temporary 20-30-person camp. Two sites will be investigated this spring, the site previously occupied by Cameco on Aberdeen Lake and a second site on or in the vicinity of Gerhard Lake. Transport to the proposed campsite will be carried out by overland sled trains out of Baker Lake in the spring of 2023 and drilling will be conducted from June to September 2023.

ᐅᐃᐱᓂᑦ: Pour l'année 2022, à partir de son camp situé à Baker Lake, Forum prévoit un programme d'exploration d'une durée de trente jours grâce à une équipe de six personnes en hélicoptère qui se déroulera tout probablement en juillet ou août. Le programme inclut l'examen des carottes de forage de l'ancien camp de Cameco au lac Aberdeen et des levés gravimétriques terrestres dans la zone de Tatiggaq et sur d'autres cibles de forage. Des levés géophysiques aériens pourraient aussi être réalisés à l'été 2022. Les activités de forage futures se concentreront sur le gisement uranifère de Tatiggaq identifié par Cameco auparavant et les autres zones pouvant contenir des gisements uranifères économiquement viables, aussi identifiés par Cameco. Les claims miniers détenus par Forum Energy Metals Corp. comprennent des terres de la Couronne ainsi que des terres de surface appartenant à des Inuits. Forum acheminera par voie fluviale à Baker Lake, en 2022, du combustible, deux ou trois foreuses de même que d'autres équipements et fournitures de campement et d'exploration, afin d'y construire un camp temporaire pouvant héberger entre 20 et 30 personnes. Deux sites feront l'objet d'un examen ce printemps : le site occupé auparavant par Cameco au lac Aberdeen et un deuxième au lac Gerhard ou à proximité. Le transport au site proposé se fera par convoi terrestre de traîneaux à partir de Baker Lake au printemps 2023 et la campagne de forages sera menée de juin à septembre 2023.

[illegible]

Personnel

Personnel on site: 20

Days on site: 60

Total Person days: 1200

Operations Phase: from 2022-05-26 to 2022-06-25

Operations Phase: from 2022-06-27 to 2024-10-27

Closure Phase: from 2024-10-27 to 2025-10-26

Post-Closure Phase: from to

$\Lambda \subset \mathbb{N} \triangleleft \mathbb{N} \hookrightarrow \Sigma \triangleleft^{\text{qb}} \mathcal{C}$

ᐱᑦ	ᖃᓄᕈᒥᑐ ᔨᑦᓇᑭᖅᓂᑦᐸᐳᑦ	ᑯᑲᑦᐴᑦ ᓄᓇᑫᑦᑎᑦ	ᑕᙶᑤᓚᓗᖅᑦ ᓄᓇᑰᑦ ᖃᓄᖅ ᑕᑕᓗᓡᓣᑦᓴᓪᓵᓗᑦᑭᓪᓴᓪᓴᓢᑦ	ᕛᑦᓴᑦᓂᑦᓴᖅᓴᑕᓞᓇᓡᓴᑦ ᕛᓄᖅᓄᑦ ᓇᑭᖅᑕᑕᑕᑦᑕᑦᓂᑦᑕᓞᓇᓡ ᑕᕛᑦᓴᓚᓂᑕᖅᑕᓞᓇᓡᓴᖅ	ᖃᓂᖁᖅᑕᖅ ᓄᓇᑦᓴᓗᓡᑦᓴᖅ ᑕᓺᓗᓡ ᓴᑕᓻᓴᑦᑦᓴᑕᓞᓇᓡ ᓴᓄᓄᑦ
102811	Camp	Crown	Forum acquired ground previously explored by Cameco Corporation between 2005-2012 to the west of Orano’s Kiggivik Project near Aberdeen and Judge Sissons lakes. Activities will include examining drill core at the previous campsite occupied by Cameco on Aberdeen Lake and ground gravity surveys in the Tatiggaq and other potential drill target areas	unknown	The property is 90 km west of Baker Lake and 320 km northwest of Rankin Inlet.
102811	Drilling	Crown	orum acquired ground previously explored by Cameco Corporation between 2005-2012 to the west of Orano’s Kiggivik Project near Aberdeen and Judge Sissons lakes. Activities will include examining drill core at the previous campsite occupied by Cameco on Aberdeen Lake and ground gravity surveys in the Tatiggaq and other potential drill target areas	unknown	The property is 90 km west of Baker Lake and 320 km northwest of Rankin Inlet.
102811	Drilling	Inuit Owned Surface Lands	Forum acquired ground previously explored by Cameco Corporation between 2005-2012 to the west of Orano’s Kiggivik Project near Aberdeen and Judge Sissons lakes. Activities will include examining drill core at the previous campsite occupied by Cameco on Aberdeen Lake and ground gravity surveys in the Tatiggaq	unknown	The property is 90 km west of Baker Lake and 320 km northwest of Rankin Inlet.

			and other potential drill target areas		
102811	Mineral Exploration	Crown	Forum acquired ground previously explored by Cameco Corporation between 2005-2012 to the west of Orano's Kiggivik Project near Aberdeen and Judge Sissons lakes. Activities will include examining drill core at the previous campsite occupied by Cameco on Aberdeen Lake and ground gravity surveys in the Tatiggaq and other potential drill target areas	unknown	The property is 90 km west of Baker Lake and 320 km northwest of Rankin Inlet.
102811	Mineral Exploration	Inuit Owned Surface Lands	Forum acquired ground previously explored by Cameco Corporation between 2005-2012 to the west of Orano's Kiggivik Project near Aberdeen and Judge Sissons lakes. Activities will include examining drill core at the previous campsite occupied by Cameco on Aberdeen Lake and ground gravity surveys in the Tatiggaq and other potential drill target areas	unknown	The property is 90 km west of Baker Lake and 320 km northwest of Rankin Inlet.

ᓄᓇᓕᓯᓐ ᓄᓇᓯᓐ ᓄᓇᓯᓐ ᓄᓇᓯᓐ ᓄᓇᓯᓐ ᓄᓇᓯᓐ ᓄᓇᓯᓐ ᓄᓇᓯᓐ ᓄᓇᓯᓐ ᓄᓇᓯᓐ

ᓄᓇᓯᓐ ᓄᓇᓯᓐ	ᓄᓇᓯᓐ	ᓄᓇᓯᓐ ᓄᓇᓯᓐ ᓄᓇᓯᓐ	ᓄᓇᓯᓐ ᓄᓇᓯᓐ ᓄᓇᓯᓐ
ᓄᓇᓯᓐ ᓄᓇᓯᓐ	Denise Lockett	Hamlet of Baker Lake (Mayor and SAO), HTO, KIA CLO<, MLA	2022-04-25
ᓄᓇᓯᓐ ᓄᓇᓯᓐ	Denise Lockett	Hamlet of Baker Lake (Mayor and SAO), HTO, KIA CLO, MLA	2022-05-02
ᓄᓇᓯᓐ ᓄᓇᓯᓐ	Mayor Richard Akwasanee	Hamlet of Baker Lake	2022-05-02
ᓄᓇᓯᓐ ᓄᓇᓯᓐ	Denise Lockett	KIA CLO	2022-05-09
ᓄᓇᓯᓐ ᓄᓇᓯᓐ	Richard Mazur, Rebecca Hunter, Denise Lockett	Mayor and CEDO Baker Lake	2022-05-11
ᓄᓇᓯᓐ ᓄᓇᓯᓐ	Richard Aksawanee,	Hamlet of Baker Lake	2022-05-30

ՀԱՆՐԱՊԵՏՈՒԹՅԱՆ ՎԵՐԿԵԼՈՒԹՅՈՒՆ

$a^{\dagger}r d^{ab} r^a \sigma^b \wedge c_n d n^e \Delta D \sigma d^{fb} D^c$ $\cap \cap \nabla^f \omega^c:$

Kivalliq

$\epsilon \Delta t^{\alpha} j^c$ $\Lambda J^{\alpha} e D \dot{N}$ $d^{\alpha} r^{\beta} C D P L \downarrow^c$

ᐱᑦᓴᐅᓂᓄᓇᐅᓂᓈᓂᓄᓇ ᐃᓄᓂᓄᓇᐅᓂᓈᓂᓄᓇ ᐃᓄᓂᓄᓇᐅᓂᓈᓂᓄᓇ ᐃᓄᓂᓄᓇᐅᓂᓈᓂᓄᓇ ᐃᓄᓂᓄᓇᐅᓂᓈᓂᓄᓇ	ᐃᓄᓂᓄᓇᐅᓂᓈᓂᓄᓇ ᐃᓄᓂᓄᓇᐅᓂᓈᓂᓄᓇ ᐃᓄᓂᓄᓇᐅᓂᓈᓂᓄᓇ ᐃᓄᓂᓄᓇᐅᓂᓈᓂᓄᓇ ᐃᓄᓂᓄᓇᐅᓂᓈᓂᓄᓇ	ᐃᓄᓂᓄᓇᐅᓂᓈᓂᓄᓇ	ᐃᓄᓂᓄᓇᐅᓂᓈᓂᓄᓇ / ᐃᓄᓂᓄᓇᐅᓂᓈᓂᓄᓇ ᐃᓄᓂᓄᓇᐅᓂᓈᓂᓄᓇ	ᐃᓄᓂᓄᓇᐅᓂᓈᓂᓄᓇ
ᐃᓄᓂᓄᓇᐅᓂᓈᓂᓄᓇ ᐃᓄᓂᓄᓇᐅᓂᓈᓂᓄᓇ ᐃᓄᓂᓄᓇᐅᓂᓈᓂᓄᓇ ᐃᓄᓂᓄᓇᐅᓂᓈᓂᓄᓇ ᐃᓄᓂᓄᓇᐅᓂᓈᓂᓄᓇ	application for land use permit for camp on crown land and exploration activities including drilling	Applied, Decision Pending		
ᐃᓄᓂᓄᓇᐅᓂᓈᓂᓄᓇ ᐃᓄᓂᓄᓇᐅᓂᓈᓂᓄᓇ ᐃᓄᓂᓄᓇᐅᓂᓈᓂᓄᓇ ᐃᓄᓂᓄᓇᐅᓂᓈᓂᓄᓇ ᐃᓄᓂᓄᓇᐅᓂᓈᓂᓄᓇ	application for land use license for camp on Inuit Owned Land and exploration activities including drilling	Applied, Decision Pending		
ᐃᓄᓂᓄᓇᐅᓂᓈᓂᓄᓇ ᐃᓄᓂᓄᓇᐅᓂᓈᓂᓄᓇ ᐃᓄᓂᓄᓇᐅᓂᓈᓂᓄᓇ ᐃᓄᓂᓄᓇᐅᓂᓈᓂᓄᓇ ᐃᓄᓂᓄᓇᐅᓂᓈᓂᓄᓇ	application for water license for water for camp use and drilling and for waste disposal	Not Yet Applied		

Project transportation types

Transportation Type	Platform Capabilities	Length of Use
Air	helicopter supported exploration and drilling	

Project accomodation types

Temporary Camp

◀▷↳◀⁹⁶▷⁹⁶

Λ⁹δ^c Δ⁶ρ²ζ⁵ Δ⁵βCDσδγ²ζ⁵ Δ⁴ε⁵ρ²δ²η²ζ⁵ Δ³δ²CD^c, Γ^cΔ²ρ²η²ζ⁵, ρ²ε⁵LC²ζ⁵, ρ²ε⁵ρ²δ²ζ⁵

ᐃᐃᐃᐃᐃ ᐃᐃᐃᐃᐃ ᐃᐃᐃᐃᐃᐃᐃᐃᐃ ᐃᐃᐃᐃᐃᐃᐃᐃᐃ	ᐃᐃᐃᐃᐃᐃᐃ	ᐃᐃᐃᐃᐃᐃᐃᐃ - ᐃᐃᐃᐃᐃᐃᐃᐃ	ᐃᐃᐃᐃᐃᐃᐃᐃᐃᐃᐃᐃᐃᐃ
helicopters	1-2	B2 or B3	drill moves and transport crew and supplies
snowmobiles with sleds	1-2	Bravo or similar	build and winter re-supply use
ATV with trailers	1	600 cc or larger	one ATV and two trailers for camp servicing
Generators	1	30 kVa	back up power
Generator	1	50 kVa	primary power
Incinolet Toilets	5-6	240V models	human waste disposal
2 intake pump	2	Gas	camp water
2 submersible pump	2	electric	camp water
Waterfax fire pump and hoses	1	Standard	Dedicated fire system with fire hoses.
Honda generators	2	2200	Gas portable construction generators
Toyotomi stoves with fuel extension kits	24	L730	heating structures
oil drip stove	1	Standard	Heat option contingency and cold weather start up
Incinerator	1	dual chambered	waste disposal
fuel tanks	4-6	50,000 L double walled	Fuel storage
fuel transfer pumps with hose reels	2	explosion proof standard	fuel transfer
core saw with ventilation set up	1-2	Standard	cutting drill core
Snowcats	several	Standard	Overland equipment and fuel haul
Challengers and Deltas	several	Standard	Overland equipment and fuel haul (PEL)
heli-portable drills with pump shacks	3	17,700 lbs total	Drilling core
Aquatel water filtration and filters	1	Standard	water treatment for human consumption

[illegible]

ፖሊስ	ፍጹም ልማት ሚኒስቴር	ፍጹም ልማት	ጎልጎል	ፍጹም ልማት	ፖሊስ
ፖሊስ ፍጹም ልማት	ፖሊስ ፍጹም ልማት	ፖሊስ ፍጹም ልማት	ፖሊስ ፍጹም ልማት	ፖሊስ ፍጹም ልማት	ፖሊስ ፍጹም ልማት

45120456						
Aviation fuel	fuel	683	205	140015	Liters	helicopter fuel
Diesel	fuel	708	205	145140	Liters	drills/camp/
Gasoline	fuel	2	205	410	Liters	ATV's, snowmobiles, generators, pumps
Other	fuel	24	1	24	Liters	10W40 motor oil for ATV's, snowmobiles, generators, pumps
Other	fuel	20	5	100	Gallons	15W40 lubricant
Other	fuel	50	5	250	Gallons	Linseed oil for drill use
Propane	fuel	40	100	4000	Lbs	cooking
Other	fuel	10	2	20	Liters	engine coolant
Other	fuel	12	1	12	Liters	Diesel 911 diesel fuel treatment
Other	fuel	20	5	100	Gallons	hydraulic fluid for the drill
Other	fuel	150	5	750	Gallons	drilling mud
Other	fuel	750	50	37500	Lbs	drilling salt
Jet A	hazardous	683	205	140015	Liters	helicopter fuel
P-50 Diesel	hazardous	706	205	144730	Liters	drill/camp fuel
Gasoline	hazardous	2	205	410	Liters	ATV's, snowmobiles, generators, pump fuel
Motor Oil 10W40	hazardous	24	1	24	Liters	ATV's, snowmobiles, generators, pumps
Motor oil 15W40	hazardous	20	5	100	Gallons	lubricant
Linseed Oil	hazardous	50	5	250	Gallons	drill use
Propane	hazardous	40	100	4000	Lbs	cooking and heating
Pre-mixed	hazardous	20	1	20	Liters	engine

$$\Delta^b C d \leq \rho \sigma \Delta^q \sigma^q b$$
[illegible]

$\Delta^{\circ} \text{G}_{\text{f}}^{\circ}(\text{C}_6\text{H}_6) = -123.4 \text{ kJ mol}^{-1}$

Every effort will be made to return the exploration area to the condition it was found in, or better. Ground disturbance will be minimized and before and after photos of drill site will be taken and provided in the annual report to the Water Board. Impacts on wildlife will be minimized. A wildlife monitor will be contracted from the Hunters and Trappers Organization to provide wildlife timing advice as well, will have the authorization to halt exploration activities if wildlife are in the area. The company will abide by the terms and conditions of licenses and permits including the Caribou Mitigation Measures, and the KIA Mobile Mitigation Measures.

Additional Information

SECTION A1: Project Info

SECTION A2: Allweather Road

SECTION A3: Winter Road

SECTION B1: Project Info

Forum Energy Metals is currently exploring for uranium in Saskatchewan and Nunavut.

SECTION B2: Exploration Activity

Proposed exploration activities include examining historic core, geophysics, mapping, sampling and drilling.

SECTION B3: Geosciences

Air and ground geophysics and magnetics could be undertaken as well as mapping and sampling in the project area.

SECTION B4: Drilling

Drilling is planned.

SECTION B5: Stripping

n/a

SECTION B6: Underground Activity

n/a

SECTION B7: Waste Rock

n.a

SECTION B8: Stockpiles

n/a

SECTION B9: Mine Development

SECTION B10: Geology

SECTION B11: Mine

SECTION B12: Mill

SECTION C1: Pits

SECTION D1: Facility

SECTION D2: Facility Construction

SECTION D3: Facility Operation

SECTION D4: Vessel Use

SECTION E1: Offshore Survey

SECTION E2: Nearshore Survey

SECTION E3: Vessel Use

SECTION F1: Site Cleanup

SECTION G1: Well Authorization

SECTION G2: Onland Exploration

SECTION G3: Offshore Exploration

SECTION G4: Rig

SECTION H1: Vessel Use

SECTION H2: Disposal At Sea

SECTION 11: Municipal Development

$\dot{L}^{\infty}_x \nabla \varphi \cap D^{1,\infty}_{\text{loc}}(\mathbb{R}^d_x) \subset L^{\infty}_x D^{1,\infty}_{\text{loc}}(\mathbb{R}^d_x)$; moreover

The project area including the temporary camp is away from designated caribou crossings.

ᐱᓪᓇ ᐱᑦᐅᐅᑦ ᑭᓪᓂᐱᑦᐅᑦ ᑕᓪᓂᐅᑦᓴᑦ: ᐅᐱᑭᓪᓂᑦᓴᑦᓴᑦᓴᑦ

The exploration area has many lakes supporting aquatic life. In addition, caribou, bears, and wolverine are in the area.

ᐱᓪᓇ ᐱᑦᑎᐅᑦ ᑦᑲᓂᐱᑦ)ᑦᑕᑎᐅᓂᑦᐱᑦ: ᐱᓂᑦᑎᓂᑦᑭᑦᐱᑦᐱᑦᑕᐱᑦᑕᑎᓂᑦᑭᑦᐱᑦᐱᑦ

Baker Lake has considerable experience with mineral exploration and mining. Agnico Eagle's Meadowbank Mine is nearing the end of its mine life, and jobs in exploration from the Forum Energy Metals Project may be able help transition skills and business opportunities.

Miscellaneous Project Information

In person consultation is planned during the week of June 20 in Baker Lake involving Mayor/Hamlet Council, Hunters and Trappers, KIA CLARC as well as a public meeting.

[illegible]

Forum Energy Metals Corp. has previously explored in the area and has a good reputation in the community. Forum looks forward to working closely with the community to maximum local employment and business opportunities and to obtain advice on wildlife timing and mitigation measures.

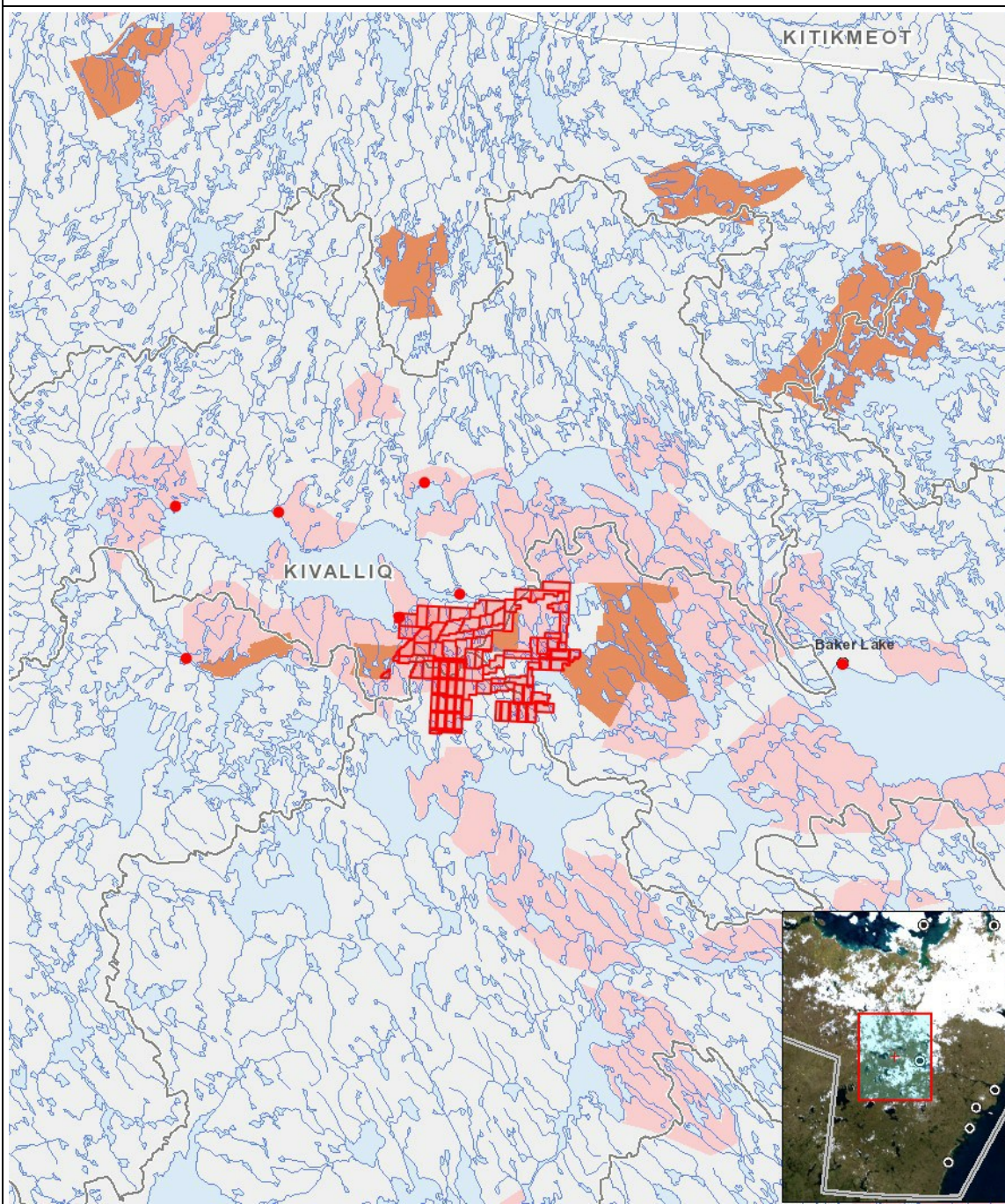
Cumulative Effects

n/a

Impacts

$\omega \rightarrow \omega \Delta^{\epsilon_b} C D \sigma^{\epsilon_c} \Gamma^c$ $\Delta^c \cap \Gamma D C \dot{\sigma}^c \dot{\gamma}^c$ $\Delta^b \dot{\gamma}^b C D \Gamma L \dot{\gamma}^c$

[illegible]
$$(P = \langle b \rangle \Delta \langle p \rangle \cap \langle a \rangle \langle b \rangle^c, N = \langle b \rangle \langle p \rangle \langle \Delta \rangle \langle a \rangle \langle b \rangle^c \langle \Delta \rangle \langle p \rangle \langle p \rangle^c \langle \Delta \rangle \langle a \rangle \langle p \rangle^c)^c, M = \langle b \rangle \langle p \rangle \langle \Delta \rangle \langle a \rangle \langle b \rangle^c \langle \Delta \rangle \langle p \rangle \langle p \rangle^c \langle \Delta \rangle \langle a \rangle \langle p \rangle^c)^c, U = \langle b \rangle \langle \Delta \rangle \langle a \rangle \langle p \rangle^c \langle b \rangle)$$



List of Project Geometries

1	polygon	102811
2	point	BUILT-UP AREA
3	point	BUILDING