



NIRB Uuktuutinga Ihivriughikhamut #125719

Assessment of trace metals contamination in marine sediments near Kugluktuk

Uuktuutinga Qanurittuq: New

Havaap Qanurittunia: Scientific Research

Uuktuutinga Ublua: 6/24/2022 3:29:26 PM

Period of operation: from 0001-01-01 to 0001-01-01

Piumayaat Angirutinga: from 0001-01-01 to 0001-01-01

Havauhikhaq Ikayuqtinga: Camille Brice
Université du Québec à Rimouski
300 Allée des Ursulines
Rimouski Québec G5L 3A1
Canada
Hivayautit Nampanga:: 5148062394, Kayumiktukkut Nampanga::

QANURITTUT

Tukihiannaqtunik havaariyauyumayumik uqauhiuyun

Qablunaatitut: The proposed project is part of a PhD project at UQAR, partly funded by the Northern Scientific Training Program of Polar Knowledge Canada. The PhD project is an assessment of trace metals contamination in marine sediment from the Canadian Arctic Archipelago (CAA), with a special interest for areas close to northern communities. It will provide baseline information on the CAA seafloor chemical composition and will help to determine the ecological risk associated to trace metals contamination. Data collected for the proposed project and resulting information will provide baseline geochemical data for coastal surface sediments from Kugluktuk, which will help to distinguish between natural concentrations of potentially toxic elements and anthropogenic contamination. In the future, these geochemical data can then help federal government agencies with assessing environmental risk and setting regulatory levels of pollutants in coastal areas near Kugluktuk. Rest of the description is an attached file.

Uiviititut: Le projet proposé fait partie d'un projet de doctorat qui s'intéresse à la présence de métaux traces dans les sédiments marins de l'Arctique canadien. Le volet présenté dans le cadre du projet proposé s'intéresse spécialement à la contamination à proximité de communautés.

Inuktitut: The project is taking place in Kitikmeot, therefore the description is in English and Inuinnaqtun. Short description is provide in french.

Inuinnaqtun: Tamna havakhautit havakhikpaktunik havakatigikpaktunik ilauyuk aah pH
Ilihakhimapkaktunik Iniktikhutik Havakhutik havakhautait UQAR ILIHAKVIKYUAKVIK
ILIHAKHIMAKPAKTUNIK INIKHUUTIK IHILHAKVIK, ilangalu tuutkikhaktauvuktunik
talvunakukhugit havkahautit Tunungani Havakvit Ihiviuktit Nalukhunginamik
Naunaitkutakhunik Havagiblugit Hilamiutanit Ilihaktithimapkaktunik Ilihautinik Ilihaktitaiyut
Havakhautit talvani havakvit Tunungani Kauhimaayauvuktunik Pitkuhiktukpaktunik
Kanatami. Tamna havakhautit pH Ilihakhimapkaktunik Iniktikhutik Havakhutik
havakhautait havakhimayunik tuutkikhaiblutik nalvukhiukhuugit huvikakgiakhaniklu imak
pikariaaagiakhaniklu huluumailgunik hinaanit iihiviuktauvuktuk havagiblugit
naunaitkutakhunik imaakaknit ataanitlu ikaalguinit taryuup naunaitkutakhunik
havakpaktunik talvunga Kanatami Taryumi Tunungani Hilaryuami Hingnaanginiklu (CAA),
pinging aah aliagibluugit havagiyaavuktunik nunaani talvani tunungani nunalingnilu.
Pilugit havagilugit ikayutikhunik tuukihigiarutikhunik tahapkunani Taryumi Tunungani
Hilaryuami Hingnaanginiklu CAA taryumi ataanginit huluumailgukakgiakhainik
ikaakukariakhaniklu tahapkunani havagiyaayunik ikayutauhunguyunik
nalautakgutaavuktunik hilaamiutanik hila haluumaikpagiakhanik havagiblugit
naunaiyainikmun kayaknaktunik atadjuutaavuktunik nalvukhiunikmun ihiviukhugit
huvilhukariakhainik haalumailgunit. Havakpaktunik naunaitkutakhunik titikgaktauvuktunik
katitktauvuktunik havagiyaavuktuukhunik naunaitkutakhuniklu tukhigiarutunik
havagiblugit tuutkikhaiyukhunik havakviuvuktukhunik hilaamiutanik humi
kanukgilidjutivuktunik nunaani imakmiutaniklu naunaitkutakhunik hignaanginik taryumi
kanginit taryuup imaa ataanginiklu taryuup nunaanit kangnitaungani kangnilguani
Kugluktuk, ikayutaulutik ilitukgiyaavuktuukhunik ilidjuhinik hilaamiutanik nauvuktunik
ilaani haluumaikpakmut imakaknit ilingukpaktuniklu ilaani nauyungnaikpaktunik nunaani
haluumailgunit haluumailgunit ikaakunitlu. Kakugu ilaani, tapkuat havagiyaavuktunik
hiliaryuami ihiviukhuugit naunaitkutakhunik ikayutauhunguuyut tahapkunani
atanguyauluaktunik atanit havakvit kavamait havakviuvuktunik pihimayunik
tuutkikhaiblutik hilryaumi hilmamiutanik kayaknaktunik pivuktuniklu havagiblugit
kakungukgaangut nalautakgutaavuktunik havagiblugit haluumaigunit haalumailguit
taryumi hingnaanginik kungituangani Kanilgumi Kugluktumi. Rest of description is an
attached file.

Personnel

Personnel on site: 2

Days on site: 3

Total Person days: 6

Operations Phase: from 2022-08-08 to 2022-08-11

Hulilukaarutit

Inigiya	Hulilukaarut Qanurittuq	Nunannga Qanurittaakhaanik	Initurlinga qanuritpa	Initurlinga utuqqarnitat unaluuniit Ingilraaqnitat Uyarannguqtut akhuurninnga	Qanitqiyauyuq qanitqiamut nunallaat kitulluuniit ahiruqtaliyainnit nuna
New project geometry	Scientific/International Polar Year Research	Crown	Not relevant	Not relevant	Sampling marine sediment near Kugluktuk community. The sampling will take place along Kugluktuk coast.

Nunaliin Ilauyun, Aviktuqhimayuniitunullu Ikayuuhiarunguyun

Nunauyuq	Atia	Timiuyuq	Upluani Uqaqatigiyaungmata
Kugluktuk	Kimberley Young	Hamlet of Kugluktuk	2022-04-28
Kugluktuk	Ralph Kownak	Inuit Heritage Trust	2022-05-02
Kugluktuk	Sylvie Leblanc	Government of Nunavut- Culture and Heritage	2022-05-09
Kugluktuk	NA	Hunters and Trappers Organization of Kugluktuk	2022-05-18

Angiuttauvaktunik

Naunaiqlugu nunanga talvani havauhikhaq ittuq:

Kitikmeot

Angiuttauvaktunik

Munariniqmut Ayuittiaqtuq	Angirutinga Qanurittuq	Tadja Qanurittaakhaanik	Ublua Tuniyauyuq/Uuktuqtuq	Umikvikhaa Ublua
Nunavunmi Ihivriuqniqmut Timiqutigiyanga	Authorization for conducting physical and natural scientific research in Nunavut.	Applied, Decision Pending		

Project transportation types

Transportation Type	Qanuq Atuqtauniarmangaa	Length of Use
Air	Plane	

Project accomodation types

Nunauyuq

Ihuaqutivaluin Atuqtauyukhan

Hanalrutit atuqtaunahuat (ukuallu ikuutat, pampiutainnik, tingmitinik, akhaluutinik, hunaluuniit)

Hanalrutit Qanurittuq	Qaffiuyut	Aktikkulaanga – Qanurittullu	Qanuq Atuqtauniarmangaa
Van Veen grab sampler	1	35 x 20 x 20 cm	Collect surface sediment samples
Boat	1	18'	To reach sampling stations from Kugluktuk

Qanurittuq Urhuqyuaq unalu Qayangnaqtut Hunavaluit Aturninnga

Qanurittuq urhuqyuaq hunavaluit aturninnga:	Urhuqyuaq Qanurittuq	Qaffiuyut qattaryut	Qattaryuk Aktikkulaanga	Atauttimut Qaffiuyut	Ilanga	Qanuq Atuqtauniarmangaa
Diesel	fuel	1	1	1	Liters	Diesel for the boat, quantity depending on the boat

Imaqmik Aturninnga

Ubluq qanuraaluk (m3)	Aturumayain imavaluin utiqittagaani qanuq	Atulirumayain imavaluin utiqittagani humi
0		

Iqqakuq

Ikkakunik Munakgiyauyunik

Havauhikhaq Hulilukaarut	Qanurittuq Iqqakut	Ihumagiyauyuq Qanuraaluktut Atuqtait	Qanuq Iqqakuurniarmangaa	Halummaqtirarnirutikhan piyutin
Information is not available				

Avatiliriniqmut Ayurhautingit:

There will be no resulting risks to the health, safety or livelihoods of Nunavut residents and there will be no impacts on the environment.

Additional Information

SECTION A1: Project Info

SECTION A2: Allweather Road

SECTION A3: Winter Road

SECTION B1: Project Info

SECTION B2: Exploration Activity

SECTION B3: Geosciences

SECTION B4: Drilling

SECTION B5: Stripping

SECTION B6: Underground Activity

SECTION B7: Waste Rock

SECTION B8: Stockpiles

SECTION B9: Mine Development

SECTION B10: Geology

SECTION B11: Mine

SECTION B12: Mill

SECTION C1: Pits

SECTION D1: Facility

SECTION D2: Facility Construction

SECTION D3: Facility Operation

SECTION D4: Vessel Use

SECTION E1: Offshore Survey

SECTION E2: Nearshore Survey

SECTION E3: Vessel Use

SECTION F1: Site Cleanup

SECTION G1: Well Authorization

SECTION G2: Onland Exploration

SECTION G3: Offshore Exploration

SECTION G4: Rig

SECTION H1: Vessel Use

SECTION H2: Disposal At Sea

SECTION I1: Municipal Development

Qanurittuq Ittunik Avatinga: Avatingalluanga

Qanurittuq Ittunik Avatinga: Inuuhimayunut Avatinga

Qanurittuq Ittunik Avatinga: Inungit-maniliurutingit Avatinga

Miscellaneous Project Information

Naunaiyainiq ukuninnga Ayurhautingit unalu Piumayaat Ikikliyuumiutinahuarutit

Tamatkiumayunik Ihuikgutivaktunik

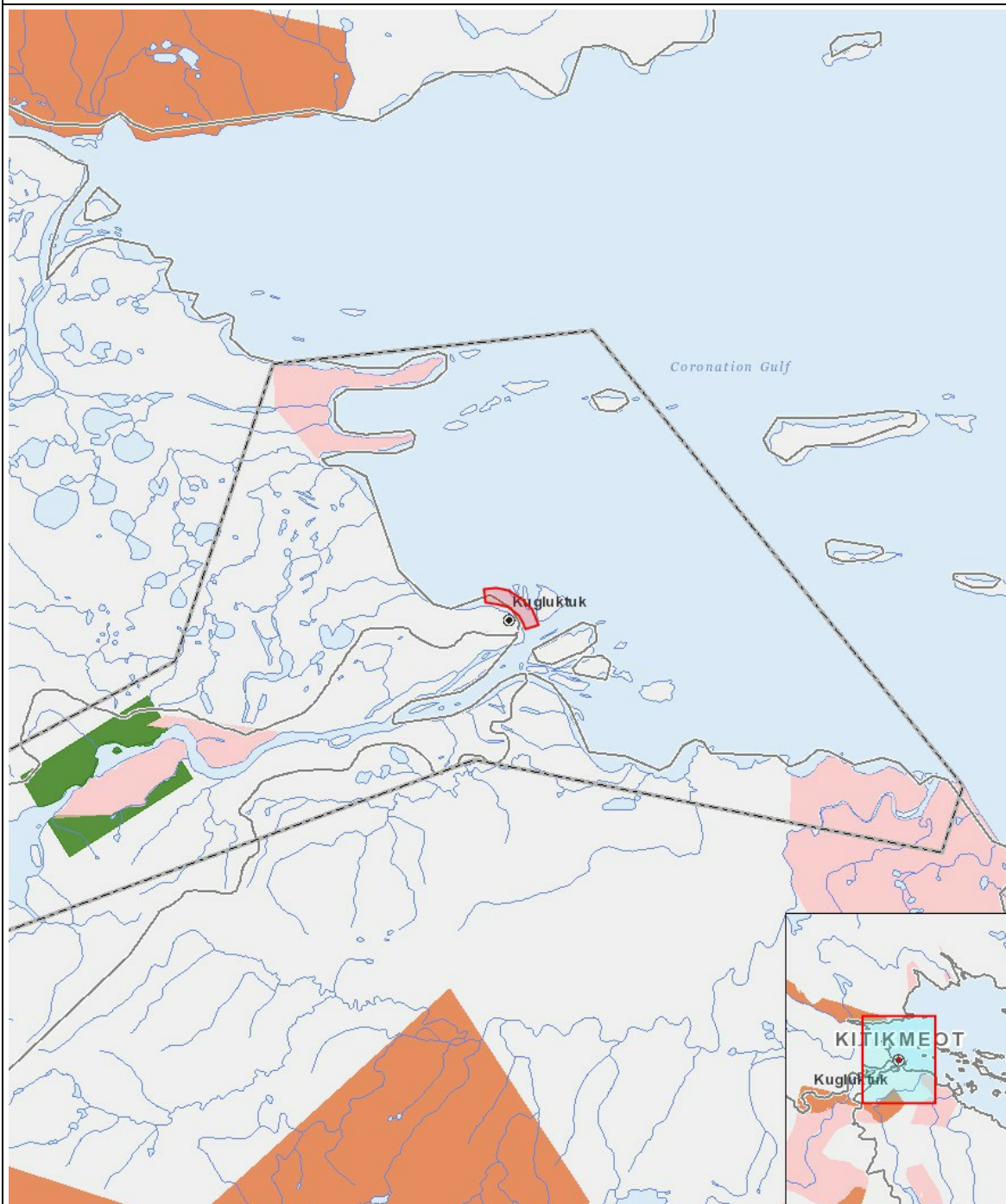
Impacts

Ilitariyauniq Avatiliriniqmut Ayurhautingit

		PHYSICAL	Designated environmental areas	Ground stability	Permafrost	Hydrology / Limnology	Water quality	Climate conditions	Eskers and other unique or fragile landscapes	Surface and bedrock geology	Sediment and soil quality	Tidal processes and bathymetry	Air quality	Noise levels	BIOLOGICAL	Vegetation	Wildlife, including habitat and migration patterns	Birds, including habitat and migration patterns	Aquatic species, incl. habitat and migration/spawning	Wildlife protected areas	SOCIO-ECONOMIC	Archaeological and cultural historic sites	Employment	Community wellness	Community infrastructure	Human health
Havakvinga																										
-		-	-	-	-	-	-	-	-	-	-	-	-	-	-	-	-	-	-	-	-	-	-	-	-	-
Aulapkaininnga																										
-		-	-	-	-	-	-	-	-	-	-	-	-	-	-	-	-	-	-	-	-	-	-	-	-	-
Piiqtauniq																										
-		-	-	-	-	-	-	-	-	-	-	-	-	-	-	-	-	-	-	-	-	-	-	-	-	-

(P = Nakuuyuq, N = Nakuungittut unalu mikhilimaittuq, M = Nakuungittut unalu mikhittaaqtuq, U = Naluyauyuq)

Havaariyauyukhamut Nayugaa



List of Project Geometries

1	polygon	New project geometry
---	---------	----------------------