



Sentrex Wind Services' power supply was developed over many years and is the most reliable power supply in the industry today.

The system uses an insulated and heated battery compartment in conjunction with a solar charging system to provide stable power output and keep service calls to a minimum. The power supply is a reliable solution for remote sites. Our components have been rigorously tested and systems can be tailored at the client's request to best suit project requirements. Components were chosen to handle freeze and thaw events of harsh winter conditions.

ADVANTAGES

- Autonomous operation for up to 12 months (weather dependent)
- Robust and reliable, extreme cold weather proven
- Small footprint Trailer
- Insulated and heated battery bank
- PV Folding frame – 1 person deployment
- Units for sale or rental
- Monitoring, Alerts and remote control ready to connect
- Shared comms with clients remote sensing device (in most cases)
- Propane Fuel Cell (SOFC)
- Integrated Power Management State-of-Charge load control is second to none!

Unlike other power supply manufacturers, our expertise lies not only in integration of power supply components, but also in wind energy, instrumentation, electrical, embedded controls and communications systems. We routinely work in remote locations and in cold, ice and snow conditions. Our clients depend on us to get the job completed and keep their remote equipment operating.

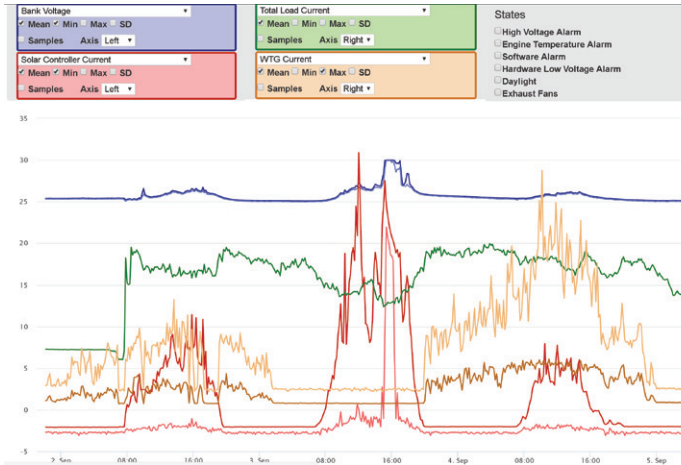
PROPANE FUEL CELL

The flat deck minimalist trailer design is made possible due to the space saving Propane Fuel Cell design. The Propane Fuel Cell is the superior choice over Direct Methanol Fuel Cells (DMFCs) which are subject to damage if frozen.

- Fuel is propane which is readily available almost everywhere
- It can freeze and not affect performance
- Fuel Cell can cycle at least 250 times for 3000 hours
- Propane consumption: Nominal 0.25lbs/hr of propane
- Main tank and backup tank systems
- Automatic propane tank switch over when empty with alerts for propane re-fill available

ABOUT

Based in New Brunswick and Alberta, **Sentrex Wind Services Inc.** has been serving the wind industry for over 15 years and has been providing power supply solutions for most of that time. We provide sales, support, and full service options for power supplies.



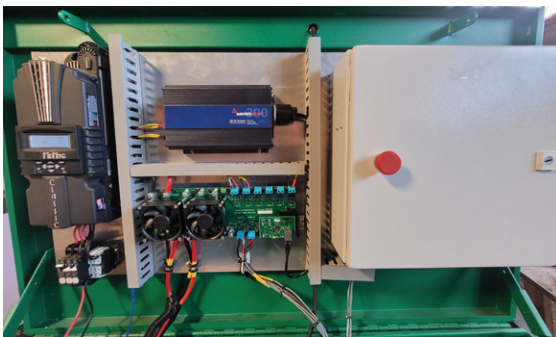
Installation is just the beginning. Sentrex's Forjive brand is our in-house solution for remote monitoring and control.

For a low cost monthly fee, the Forj system will monitor your remote power supply and email vital information to ensure your measurement campaign will have the power it needs. Remote telemetry can be configured for either satellite or cell phone communications and allow for pre-emptive troubleshooting to minimize service calls. Depending on the service package chosen, Sentrex can fully maintain the unit including site visits (pending site location) for years of worry free power.

Optional surveillance cameras are available to visually monitor the system's mechanical and electrical components as well as objects nearby. These cameras can be configured to send pictures to our servers on a regular schedule.

APPLICATIONS

- Any LiDAR or SoDAR RSD (Remote Sensing Device)
- Any heated sensor (NRG IceFree, Thies, Ultrasonic, etc.)
- Nav Lighting
- Surveillance cameras
- Remote communication links
- Virtually any field or remote site equipment



SPECIFICATIONS

- Small single axle flat deck trailer, nominal 7' (w) x 10'-12' (l) x 8' (h)
- Tested in temperatures ranging from -40°C to +40°C (-40°F to 104°F)
- 20 kWh battery capacity
- Propane Fuel Cell provides up to 3 month autonomy for 100W load
- 24V system to feed any load (120VAC, 12-24 VDC)
- Nominal total load typically 100-250W (up to 1000W)
- 8 (5A) outputs
- 3 (25A) outputs
- 40+ data points being monitored with Forj Live
- 1800W of trailer mounted PV with 2700W option
- SOC battery monitoring
- Heated battery compartment
- Propane Fuel cell backup
- Optional surveillance Cameras
- Service plan and warranty plans available



SENTREX WIND SERVICES INC.

Quispamsis, NB and Barons, AB

869 Hampton Road
Quispamsis, NB, Canada
E2G 1Z5

Phone: +1(506) 849.0026

Fax: +1(506) 849.6783

info@sentrexwind.com

www.sentrexwind.com



Serving Canada & USA