



NIRB Uuktuutinga Ihivriughikhamut #125734

Multidisciplinary Observatory for Arctic Climate Change and Extreme Events Monitoring (MOACC)

Uuktuutinga Qanurittuq: New

Havaap Qanurittunia: Scientific Research

Uuktuutinga Ublua: 8/1/2022 1:46:38 PM

Period of operation: from 0001-01-01 to 0001-01-01

Piumayaat Angirutinga: from 0001-01-01 to 0001-01-01

Havauhikhaq Ikayuqtinga: Université de Sherbrooke, Alexander Langois
Université de Sherbrooke, Alexander Langois
Department de Géomatique appliquée, Alexander Langois, Université de Sherbrooke,
Sherbrooke, QC J1K2R1, Phone: 819-821-8000 ext. 65690, Email:
a.langlois2@usherbrooke.ca
Sherbrooke Quebec J1K 2R1
Canada
Hivayautit Nampanga:: 819-446-4860, Kayumiktukkut Nampanga::

QANURITTUT

Tukihinnaqtunik havaariyaumayumik uqauhiyun

Qablunaatitut: See attached. The personnel 'Person days' and fuel are estimated for Year 1 of the project only.

Uiviititut: See attached.

Inuktitut: NA is this in the the Kitikmeto region

Inuinnaqtun: See attached.

Personnel

Personnel on site: 10

Days on site: 10

Total Person days: 100

Operations Phase: from 2022-06-01 to 2026-03-31

Operations Phase: from 2022-06-01 to 2026-03-31

Post-Closure Phase: from to

Hulilukaarutit

Inigiya	Hulilukaarut Qanurittuq	Nunannga Qanurittaakhaanik	Initurlinga qanuritpa	Initurlinga utuqqarnitat unaluuniit Ingilraaqnitat Uyarannguqtut akhuurninnga	Qanitqiyauyuq qanitqiamut nunallaat kitulluuniit ahiruqtaliyainnit nuna
Intensive Monitoring Area	Drilling	Crown	NA	NA	15 km from Cambridge Bay
Intensive Monitoring Area	Aerial surveys	Crown	NA	NA	15 km from Cambridge Bay
Intensive Monitoring Area	Equipment installation	Crown	NA	NA	15 from Cambridge Bay
Intensive Monitoring Area	Researching	Crown	NA	NA	15 km from Cambridge Bay
Intensive Monitoring Area	Sampling sites	Crown	NA	NA	15 km from Cambridge Bay

Nunaliin Ilauyun, Aviktuqhimayuniitunullu Ikayuuhiarunguyun

Nunauyuq	Atia	Timiuyuq	Upluani Uqaqatigiyaungmata
Ikaluktuttiaq	Beverly Maksagak	Hunters & Trappers Organization (HTO)	2020-07-01

Angiuttauvaktunik

Naunaiqlugu nunanga talvani havauhikhaq ittuq:

Kitikmeot

Angiuttauvaktunik

Munariniqmut Ayuittiaqtuq	Angirutinga Qanurittuq	Tadja Qanurittaakhaanik	Ublua Tuniyauyuq/Uuktuqtuq	Umikvikhaa Ublua
Nunavunmi Ihivriuqniqmut Timiqutigiyanga	License initiated along with NPC	Applied, Decision Pending		

Project transportation types

Transportation Type	Qanuq Atuqtauniarmangaa	Length of Use
Land	skidoos and ATV	

Project accomodation types

Temporary Camp

Nunauyuq

Ihuaqutivaluin Atuqtauyukhan

Hanalrutit atuqtaunahuat (ukuallu ikuutat, pampiutainnik, tingmitinik, akhaluutinik, hunaluuniit)

Hanalrutit Qanurittuq	Qaffiuyut	Aktikkulaanga – Qanurittullu	Qanuq Atuqtauniarmangaa
Skidoo	4	2	Transportation
ATV	2	2	Transportation
Permafrost drill	1	2	Drilling boreholes

Qanurittuq Urhuqyuaq unalu Qayangnaqtut Hunavaluit Aturninnga

Qanurittuq urhuqyuaq hunavaluit aturninnga:	Urhuqyuaq Qanurittuq	Qaffiuyut qattaryut	Qattaryuk Aktikkulaanga	Atauttimut Qaffiuyut	Ilanga	Qanuq Atuqtauniarmangaa
Gasoline	fuel	3	100	300	Liters	Generators

Imaqmik Aturninnga

Ubluq qanuraaluk (m3)	Aturumayain imavaluin utiqtittagaani qanuq	Atulirumayain imavaluin utiqtittagani humi
0		

Iqqakuq

Ikkakunik Munakgiyauyunik

Havauhikhaq Hulilukaarut	Qanurittuq Iqqakut	Ihumagiyauyuq Qanuraaluktut Atuqtait	Qanuq Iqqakuurniarmangaa	Halummaqtirarnirutikhan piyutin
Information is not available				

Avatiliriniqmut Ayurhautingit:

Sampling to occur in winter, to measure snow characteristics, no impacts anticipated given that we do not sample the soil and no chemicals or fuel are involved, other than snowmobile use..

Additional Information

SECTION A1: Project Info

SECTION A2: Allweather Road

SECTION A3: Winter Road

SECTION B1: Project Info

SECTION B2: Exploration Activity

SECTION B3: Geosciences

SECTION B4: Drilling

SECTION B5: Stripping

SECTION B6: Underground Activity

SECTION B7: Waste Rock

SECTION B8: Stockpiles

SECTION B9: Mine Development

SECTION B10: Geology

SECTION B11: Mine

SECTION B12: Mill

SECTION C1: Pits

SECTION D1: Facility

SECTION D2: Facility Construction

SECTION D3: Facility Operation

SECTION D4: Vessel Use

SECTION E1: Offshore Survey

SECTION E2: Nearshore Survey

SECTION E3: Vessel Use

SECTION F1: Site Cleanup

SECTION G1: Well Authorization

SECTION G2: Onland Exploration

SECTION G3: Offshore Exploration

SECTION G4: Rig

SECTION H1: Vessel Use

SECTION H2: Disposal At Sea

SECTION I1: Municipal Development

Qanurittuq Ittunik Avatinga: Avatingalluanga

Qanurittuq Ittunik Avatinga: Inuuhimayunut Avatinga

Qanurittuq Ittunik Avatinga: Inungit-maniliurutingit Avatinga

Miscellaneous Project Information

Naunaiyainiq ukuninnga Ayurhautingit unalu Piumayaat Ikikliyuumiutinahuarutit

Tamatkiumayunik Ihuikgutivaktunik

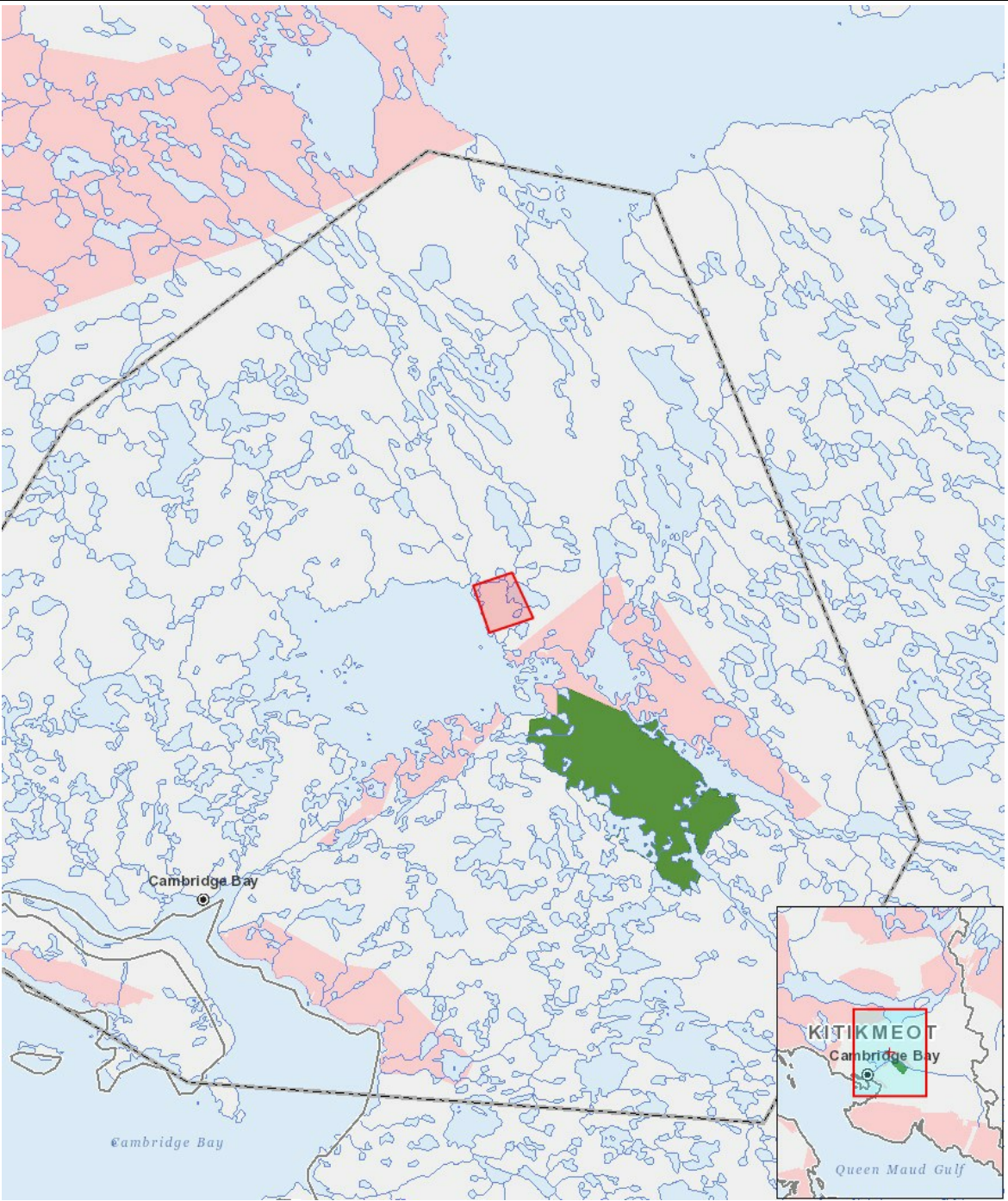
Impacts

Ilitariyauniq Avatiliriniqmut Ayurhautingit

	PHYSICAL	Designated environmental areas	Ground stability	Permafrost	Hydrology / Limnology	Water quality	Climate conditions	Eskers and other unique or fragile landscapes	Surface and bedrock geology	Sediment and soil quality	Tidal processes and bathymetry	Air quality	Noise levels	BIOLOGICAL	Vegetation	Wildlife, including habitat and migration patterns	Birds, including habitat and migration patterns	Aquatic species, incl. habitat and migration/spawning	Wildlife protected areas	SOCIO-ECONOMIC	Archaeological and cultural historic sites	Employment	Community wellness	Community infrastructure	Human health
Havakvinga																									
Drilling		-	-	N	-	-	-	-	-	-	-	-	-		-	-	-	-	-		-	-	-	-	-
Equipment installation		-	-	-	-	-	-	-	-	-	-	-	-		-	-	-	-	-		-	-	-	-	-
Aulapkaininnga																									
-		-	-	-	-	-	-	-	-	-	-	-	-		-	-	-	-	-		-	-	-	-	-
Piiqtauniq																									
-		-	-	-	-	-	-	-	-	-	-	-	-		-	-	-	-	-		-	-	-	-	-

(P = Nakuuyuq, N = Nakuungittut unalu mikhilimaittuq, M = Nakuungittut unalu mikhittaaqtuq, U = Naluyauyuq)

Havaariyauyukhamut Nayugaa



List of Project Geometries

1	polygon	Intensive Monitoring Area
---	---------	---------------------------